

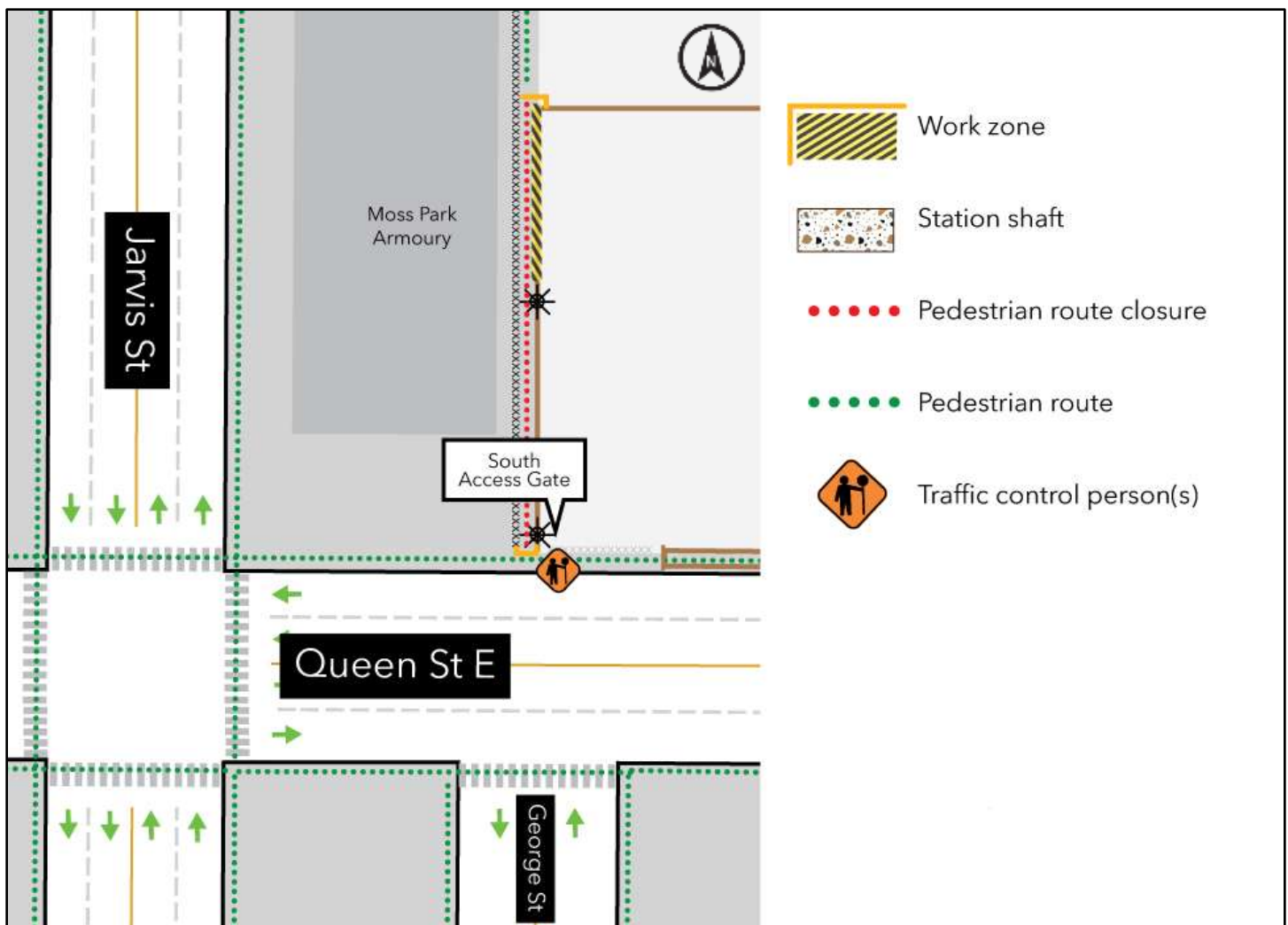
# Signage installation: Armoury walkway

**Expected start date:** July 23, 2025

**Expected end date:** Up to one (1) week

**Hours of work:** Weekdays (Monday to Friday) from 8 a.m. to 5 p.m.

## Map of Affected Area



## What is happening?

- Signage panels will be installed on the hoarding around the perimeter fencing of the construction zone in the northern portion of the armoury laneway. (see map)
- To ensure that the public is protected during the installation process, closure of the armoury laneway is required.
- Work will begin on Wednesday, July 23, and it is expected to take approximately up to one (1) week to complete.
- Please note that there is a separate community art project that will be displayed on the hoarding and is still in development with Metrolinx. More details will be shared with the community as they become available.

## What to expect

- Crews will be performing panel installation at the northern portion of the hoarding between the fencing along the walkway.
- A temporary partial closure of the walkway will be in place during this phase of work. (see map)
- Work is expected to take place during the daytime (weekdays) between 9 a.m. and 5 p.m. from Monday to Friday.
- Crews are expected to be on-site prior to 8 a.m. to set-up equipment.
- Safety barriers will be used to separate pedestrians from the work zone.
- Clear signage will be posted for pedestrians.
- Crews will take measures to minimize noise impacts wherever possible.
- All the necessary construction permits have been obtained.
- Work may be postponed or rescheduled due to unforeseen circumstances.
- For more information about upcoming station work please see **[metrolinx.com/Ontarioline](https://metrolinx.com/Ontarioline)** or sign-up for the e-newsletter.
- Learn more about the measures we take to keep communities safe as we build more transit connections: **[metrolinx.com/KeepingCommunitiesSafe](https://metrolinx.com/KeepingCommunitiesSafe)**

## About the Ontario Line

- 15.6-kilometre subway line that will make it faster and easier to travel within Toronto and beyond.
- 15 stops and more than 40 connections to other transit, including GO train, subway, LRT, streetcar and bus lines.
- Less than 30 minutes from one end of the line to the other.
- 28,000 fewer car trips on the road each day.

### Contact us:

Call us 24/7 at: [416-202-5100](tel:416-202-5100)

Write to us at: [ontarioline@metrolinx.com](mailto:ontarioline@metrolinx.com)

Find us on X, Facebook, and Instagram:

[@ontarioline](#)

Visit the website:

[www.metrolinx.com/ontarioline](https://www.metrolinx.com/ontarioline)

### Visit our community offices:

#### 770 Queen Street East (near Queen & Broadview)

General hours:

Mondays, Tuesdays, and Fridays: 9 a.m. to 5 p.m.

Wednesdays: 1 p.m. to 6 p.m.

Thursdays: 10 a.m. to 6 p.m.

#### Thornccliffe Park:

East York Town Centre

45 Overlea Blvd., Toronto, ON M4H 1C3

Unit 153 (across from the Rogers store)

General hours:

Monday – Friday, 9 a.m. to 5 p.m.

Disponible en français sur demande. Si vous êtes intéressé, veuillez envoyer un courriel à [OntarioLine@metrolinx.com](mailto:OntarioLine@metrolinx.com)