

# **Union Station Enhancement Project**

## **Major Landowners / Tenants Meeting**

**June 12 , 2024**



# METROLINX LAND ACKNOWLEDGEMENT

Let us take a moment to acknowledge we are on lands that have been, and continue to be, home to many Indigenous Peoples including the Anishnabeg, the Haudenosaunee and the Huron-Wendat peoples. We are all Treaty people.

Many of us have come here as settlers, as immigrants or involuntarily as part of the trans-Atlantic slave trade, in this generation, or generations past. We acknowledge the historic and continued impacts of colonization and the need to work towards meaningful reconciliation with the original caretakers of this land.

We acknowledge that Metrolinx operates on territories and lands covered by many treaties that affirm and value the rights of Indigenous communities, Nations and Peoples.

We understand the importance of working towards reconciliation with the original caretakers of this land. At Metrolinx, we will conduct business in a manner that is built on a foundation of trust, respect and collaboration.

# ALLIANCE CHARTER

## UNION STATION ENHANCEMENT PROJECT



**ONTrack Alliance  
commits to courageously  
transform how projects  
are delivered through  
trust and collaboration.**



# AGENDA

1 UNION STATION ENHANCEMENT PROJECT (USEP) OVERVIEW

2 CONSTRUCTION UPDATES

3 CUSTOMER UPDATES

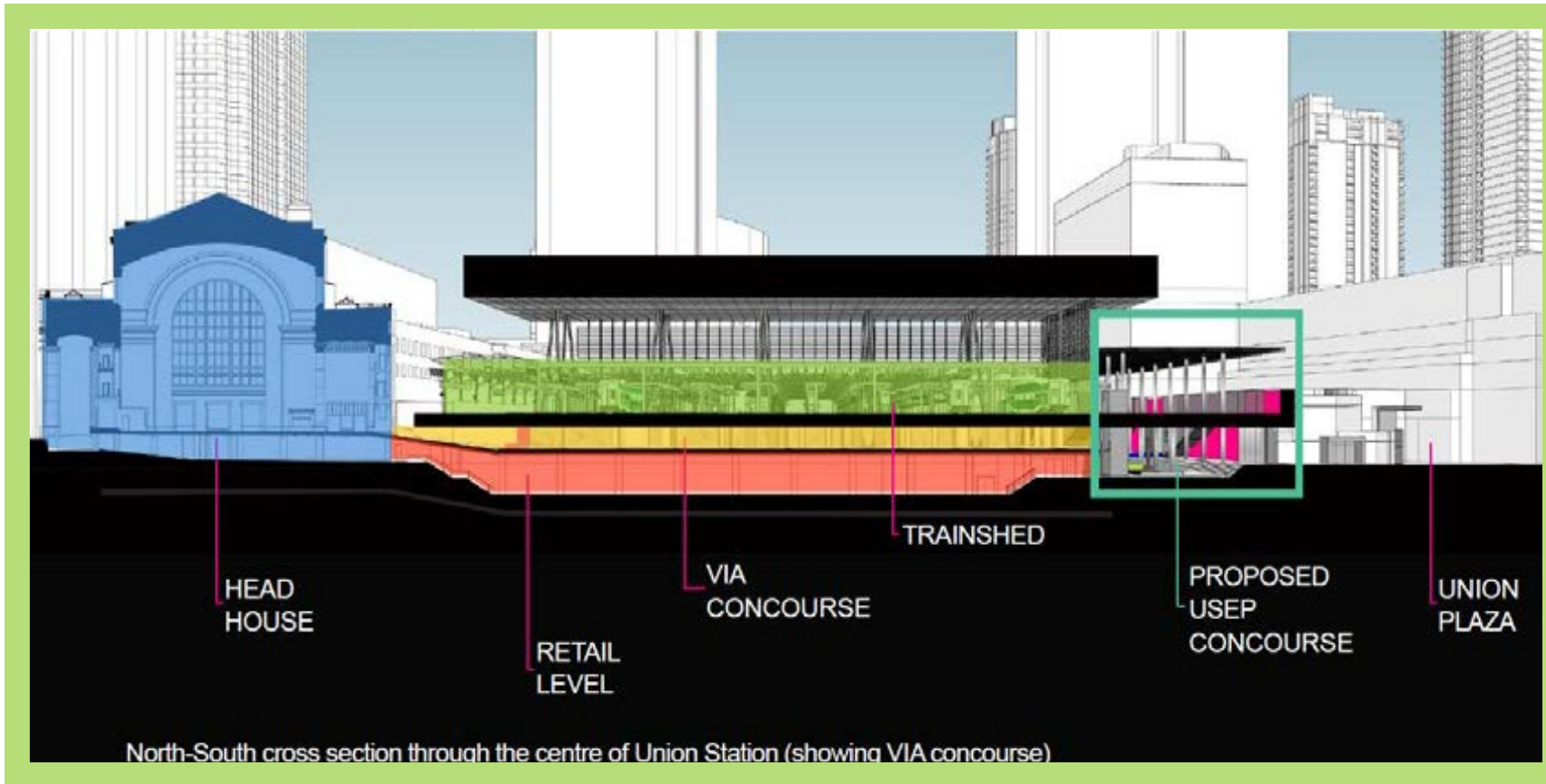
4 NEXT STEPS

## Your Key OnTrack Alliance Contacts:

- Dilan Unutkan, Stakeholder and Communications Manager, ONTrack Alliance
  - [Dilancan.Unutkan@wsp.com](mailto:Dilancan.Unutkan@wsp.com)
- Nilgun Erkoc, Senior Manager, Community Engagement, GO Expansion, Metrolinx
  - [Nilgun.Erkoc@metrolinx.com](mailto:Nilgun.Erkoc@metrolinx.com)

# USEP PROJECT OVERVIEW

## GO EXPANSION ENABLING WORKS

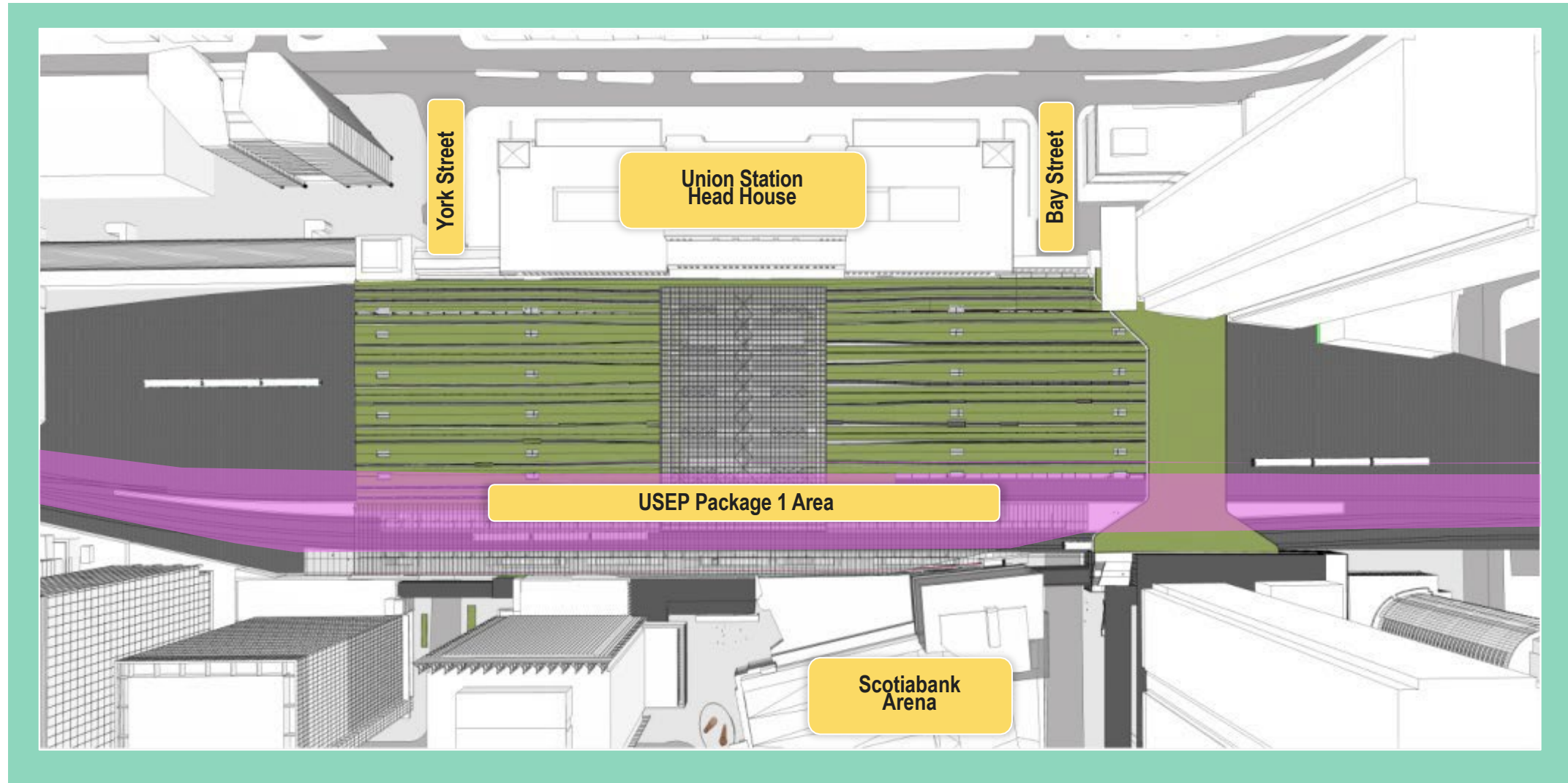


The Union Station Enhancement Project (USEP) is a GO Expansion Enabling Works project that is required in advance of the On-Corridor Works project in order to facilitate future track closures for the reconstruction of platforms within the existing trainshed, and to optimize the overall On-Corridor Works construction schedule.

The USEP is required in addition to the rehabilitation and upgrades already completed or near completion at Union Station.



# UNION STATION ENHANCEMENT PROJECT



# CONCEPTUAL RENDERINGS



Artists rendering. Design subject to change.

Figure: Conceptual rendering of continuous concourse from York Street to Bay Street



# CONSTRUCTION UPDATES

# UNION STATION ENHANCEMENT PROJECT CONSTRUCTION

- Demolition, Excavation, and Foundation Activity - Phasing
  - Progress of demolition, excavation, and foundation work in Areas A - J.
- Truck Tunnel Demolition
  - Activity sequence update
- Customer Communications
- Next Steps



# TRACK LEVEL - PROGRESS



Photo: Areas F/G - June 2024



# TRACK LEVEL - WEST OF YORK ST (AREA A)

## Track Level

- Mechanical Room 4
  - Excavation and installation of lock block support of excavation is ongoing
  - Demolition of pre-existing secant wall is ongoing

Next steps: Cap beam installation on the secant wall

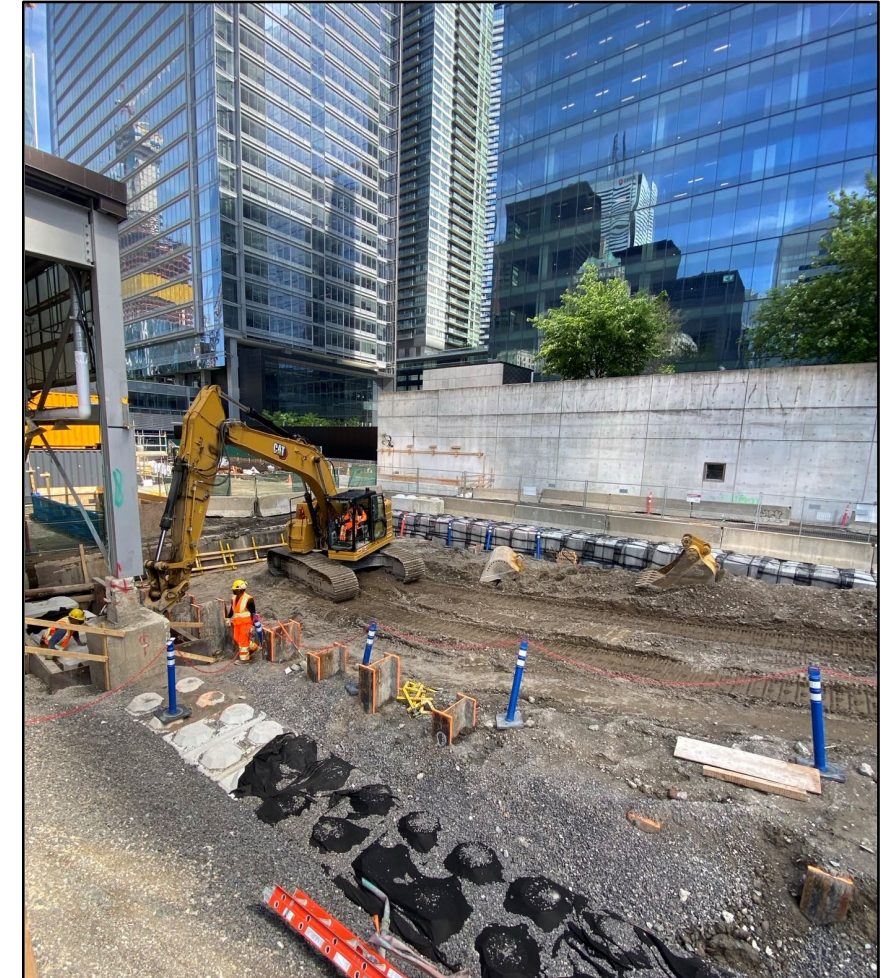
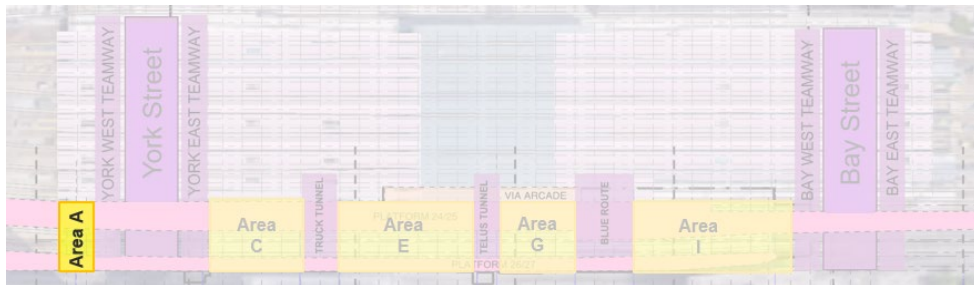


Photo: Excavation between lock block wall supports

# TRACK LEVEL - YORK STREET TEAMWAYS (AREA B)

## Enwave

- Preparation for Enwave
  - Construction of condensation pit is complete
- Anticipated start of Enwave scope of work: TBD

## York East Teamway

- Excavation for the sump pit installation is complete
- Excavation to expose the abutment footing and chipping of the footing is ongoing
  - **Next step:** rebar and formwork for column installations and concrete pouring



Photos: York East Teamway behind OTA hoarding



# TRACK LEVEL - EAST OF YORK ST (AREA C)

## South side

- South-east: sanitary piping and electrical conduit installations and backfilling are complete
  - **Next steps:** Methane pipe installations, grounding installations, final grading and vapor barrier

## North side

- Backfilling and methane and sanitary pipe installations complete
- Fine grading is ongoing
  - **Next steps:** reinforcement installations for the concourse slab pour

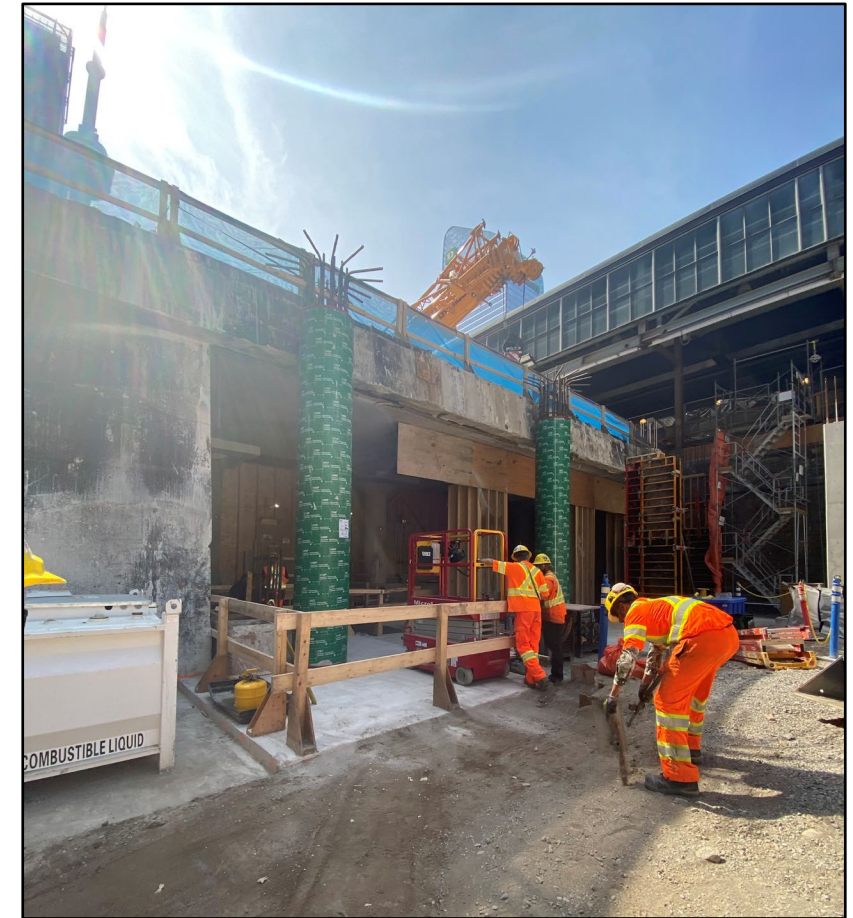
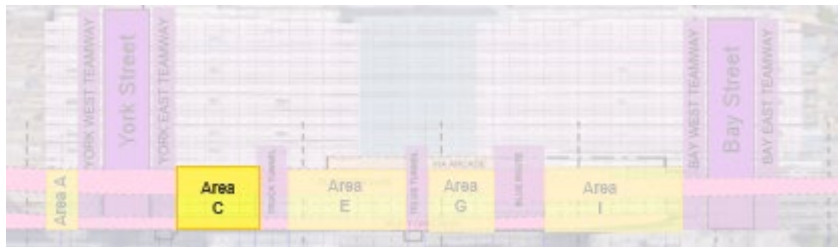
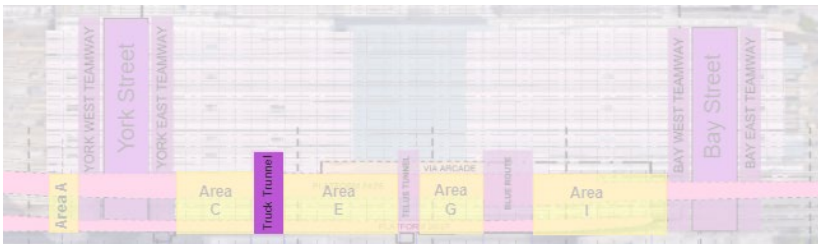


Photo: Area C – Newly poured columns at the York St Abutment

# TRUCK TUNNEL (AREA D)

- Truck Tunnel Openings
  - North flare: door opening is complete (hammering and hand chipping)
  - South flare: door opening into Mechanical room is ongoing; coring and hand chipping are complete, hammering to start in July
- Blockwall Installations (South Flare)
  - Blockwall installations starting June 24, 2024
    - Monday - Friday, from 8am - 5pm
    - No impact to vehicular traffic leading to Union Station Loading Dock



**Photo:** Truck Tunnel opening cut on the west side opening into Area C



# TRACK LEVEL - AREA E

## South side

- Building Mechanical Room 1
  - Sanitary and methane piping installations are complete
  - Backfilling and fine grading are complete
  - Waterproofing is ongoing
    - **Next steps:** Wire sawing truck tunnel door opening and concourse slab pour

## North side

- Methane piping installations are ongoing
- Backfilling with clear stone and fine grade is underway
  - **Next steps:** Vapor barrier installation

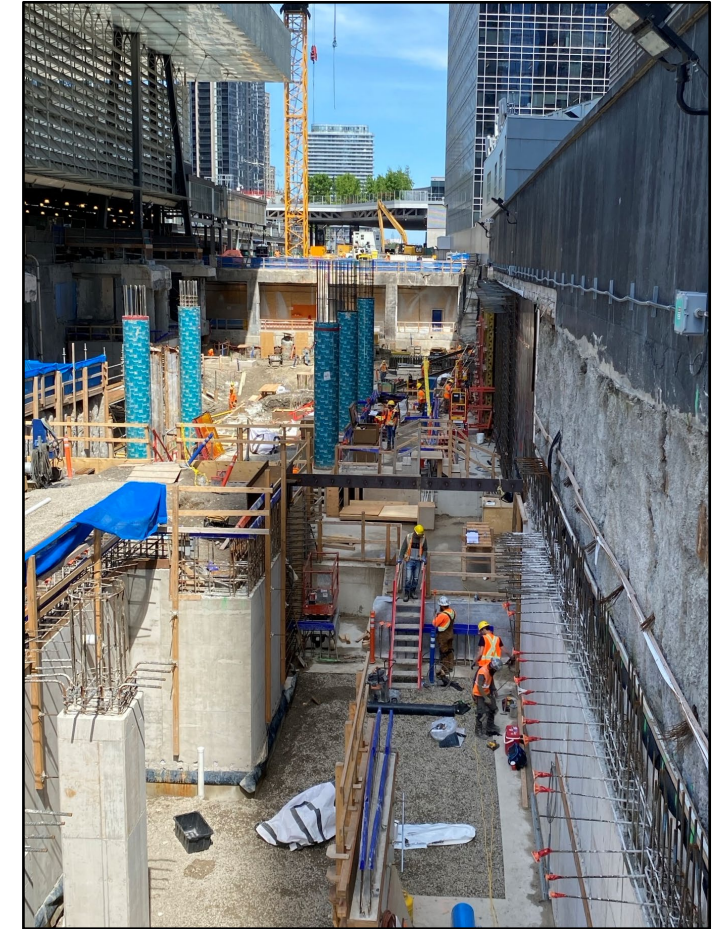


Photo: Area E Mechanical Room Progress  
(east facing)

# TRACK LEVEL - AREAS F/G

## South side

- Pile cap installations and detailing are ongoing
- Caisson chipping is underway
- Rebar work and formwork on the south wall is complete and concrete pouring is ongoing
  - **Next steps:** formwork stripping

## North side

- Demolition and excavation activities are ongoing, including:
  - Chipping of existing caissons to final elevation
  - Excavation for future pile caps and SOE installations
- Mechanical Room 2
  - Additional waterproofing and rebar and formwork installations are ongoing
    - **Next Step:** Concrete pouring



Photo: Area F/G - South wall formwork



# TRACK LEVEL - AREA F/G

- Electrical Relocations
  - 120V relocation investigations - on hold
- Manhole investigations in the Blue Route are ongoing
  - Next step: investigating manhole on Bay St



Photo: Blue Route openings on the West Wall



# TRACK LEVEL - AREA I/J

## Area I

- Demolition and excavation activities are ongoing
  - North side: excavation or pile caps is complete, micropile detailing is in progress
  - South side: support of excavation installations, deep excavation, and steel cutting are ongoing
    - **Next steps:** Mud mat installations to continue throughout the north side

## Area J

- ON HOLD - design development

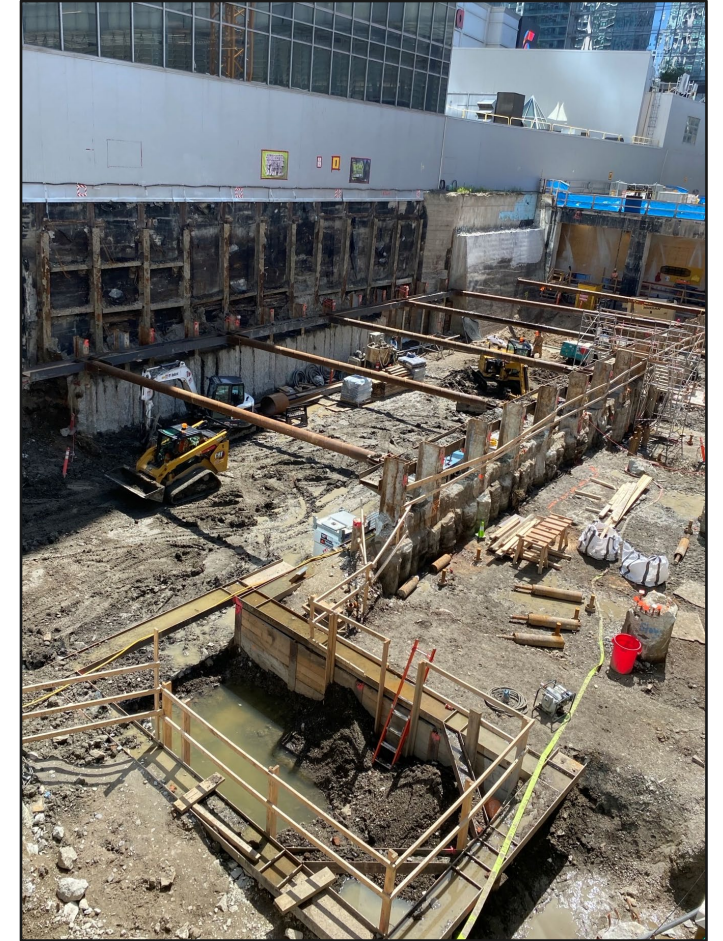
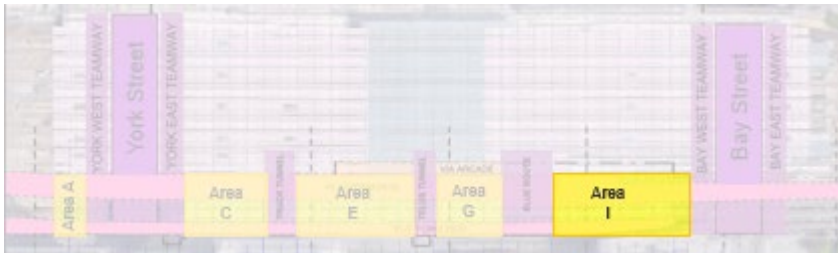


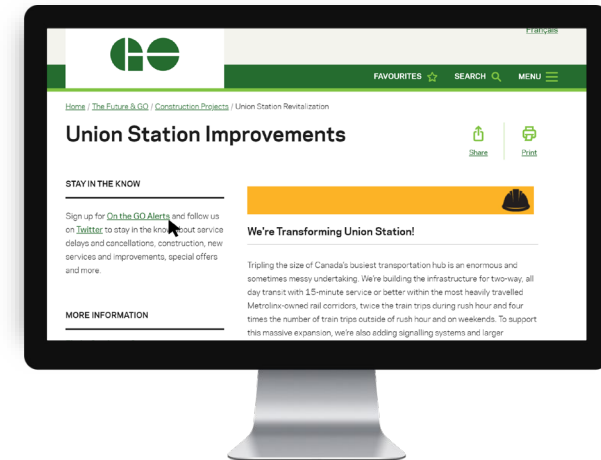
Photo: Area I - Deep Excavation Work Ongoing

# CUSTOMER UPDATES

# CUSTOMER UPDATES

No customer updates for the month of June.

Construction updates posted on the web at:  
[Union Station Improvements](#)  
Register for [On the GO alerts](#) to stay in the know



# NEXT STEPS

## Contacts:

- Dilan Unutkan, Stakeholder Communications Manager, ONTrack Alliance
  - [Dilancan.Unutkan@wsp.com](mailto:Dilancan.Unutkan@wsp.com)
- Paul Rotella, Project Coordinator, Stakeholder & Communications, ONTrack Alliance
  - [Paul.Rotella@wsp.com](mailto:Paul.Rotella@wsp.com)
- Nilgun Erkoc, Senior Manager, Community Engagement, GO Expansion, Metrolinx
  - [Nilgun.Erkoc@metrolinx.com](mailto:Nilgun.Erkoc@metrolinx.com)





**@Metrolinx**



**@GOExpansion**



**<https://www.metrolinx.com/union>**



**TorontoWest@metrolinx.com**

