

# **Union Station Enhancement Project**

## **Major Landowners / Tenants Meeting**

**April 10th, 2024**



# METROLINX LAND ACKNOWLEDGEMENT

Let us take a moment to acknowledge we are on lands that have been, and continue to be, home to many Indigenous Peoples including the Anishnabeg, the Haudenosaunee and the Huron-Wendat peoples. We are all Treaty people.

Many of us have come here as settlers, as immigrants or involuntarily as part of the trans-Atlantic slave trade, in this generation, or generations past. We acknowledge the historic and continued impacts of colonization and the need to work towards meaningful reconciliation with the original caretakers of this land.

We acknowledge that Metrolinx operates on territories and lands covered by many treaties that affirm and value the rights of Indigenous communities, Nations and Peoples.

We understand the importance of working towards reconciliation with the original caretakers of this land. At Metrolinx, we will conduct business in a manner that is built on a foundation of trust, respect and collaboration.

# ALLIANCE CHARTER

## UNION STATION ENHANCEMENT PROJECT



**ONTrack Alliance**  
commits to courageously  
transform how projects  
are delivered through  
trust and collaboration.



# AGENDA

## 1 UNION STATION ENHANCEMENT PROJECT (USEP) OVERVIEW

## 2 CONSTRUCTION UPDATES

## 3 CUSTOMER UPDATES

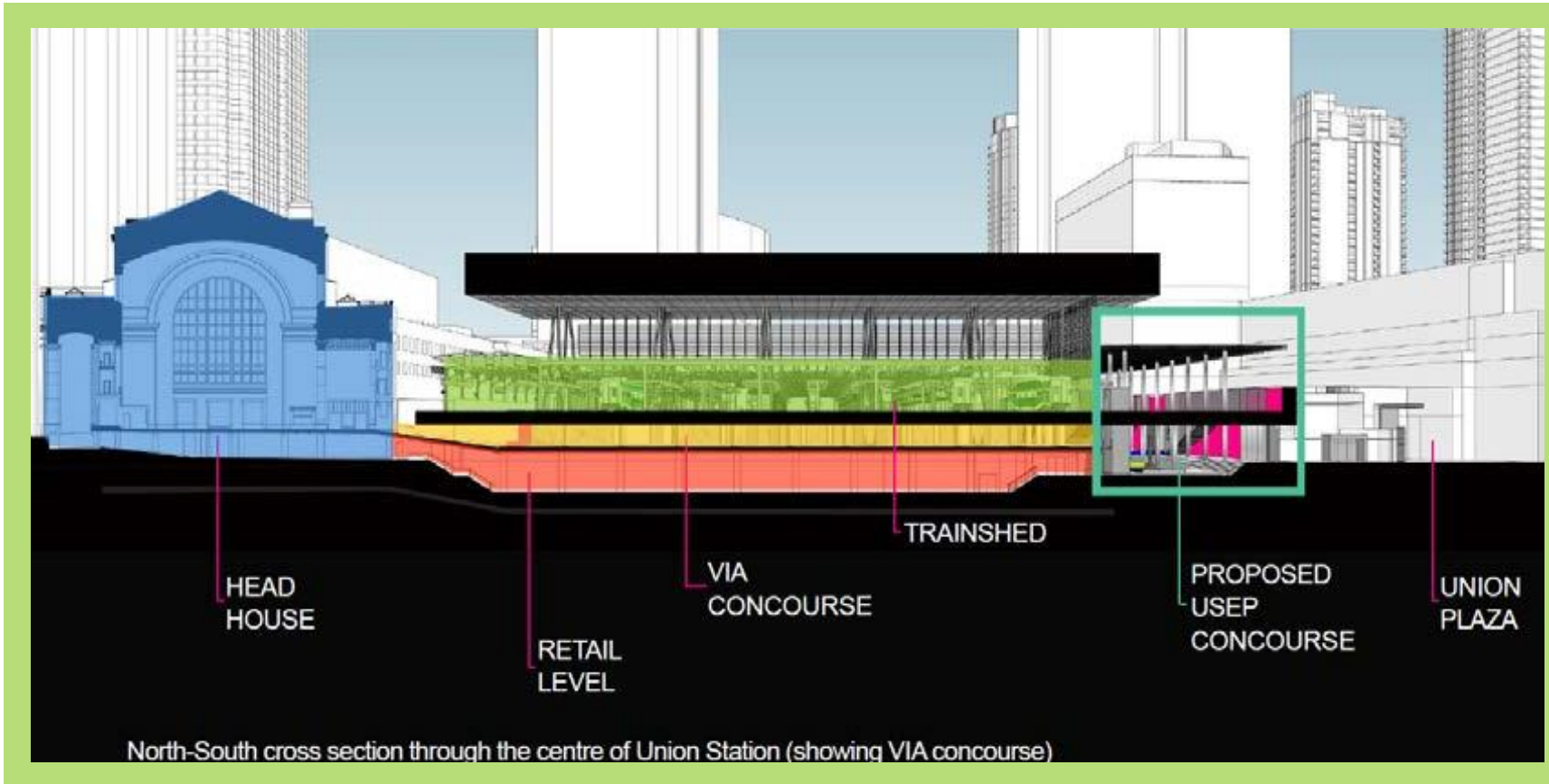
## 4 NEXT STEPS

### **Your Key OnTrack Alliance Contacts:**

- Dilan Unutkan, Stakeholder and Communications Manager, ONTrack Alliance
  - [Dilancan.Unutkan@wsp.com](mailto:Dilancan.Unutkan@wsp.com)
- Nilgun Erkoc, Senior Manager, Community Engagement, GO Expansion, Metrolinx
  - [Nilgun.Erkoc@metrolinx.com](mailto:Nilgun.Erkoc@metrolinx.com)

# USEP PROJECT OVERVIEW

## GO EXPANSION ENABLING WORKS

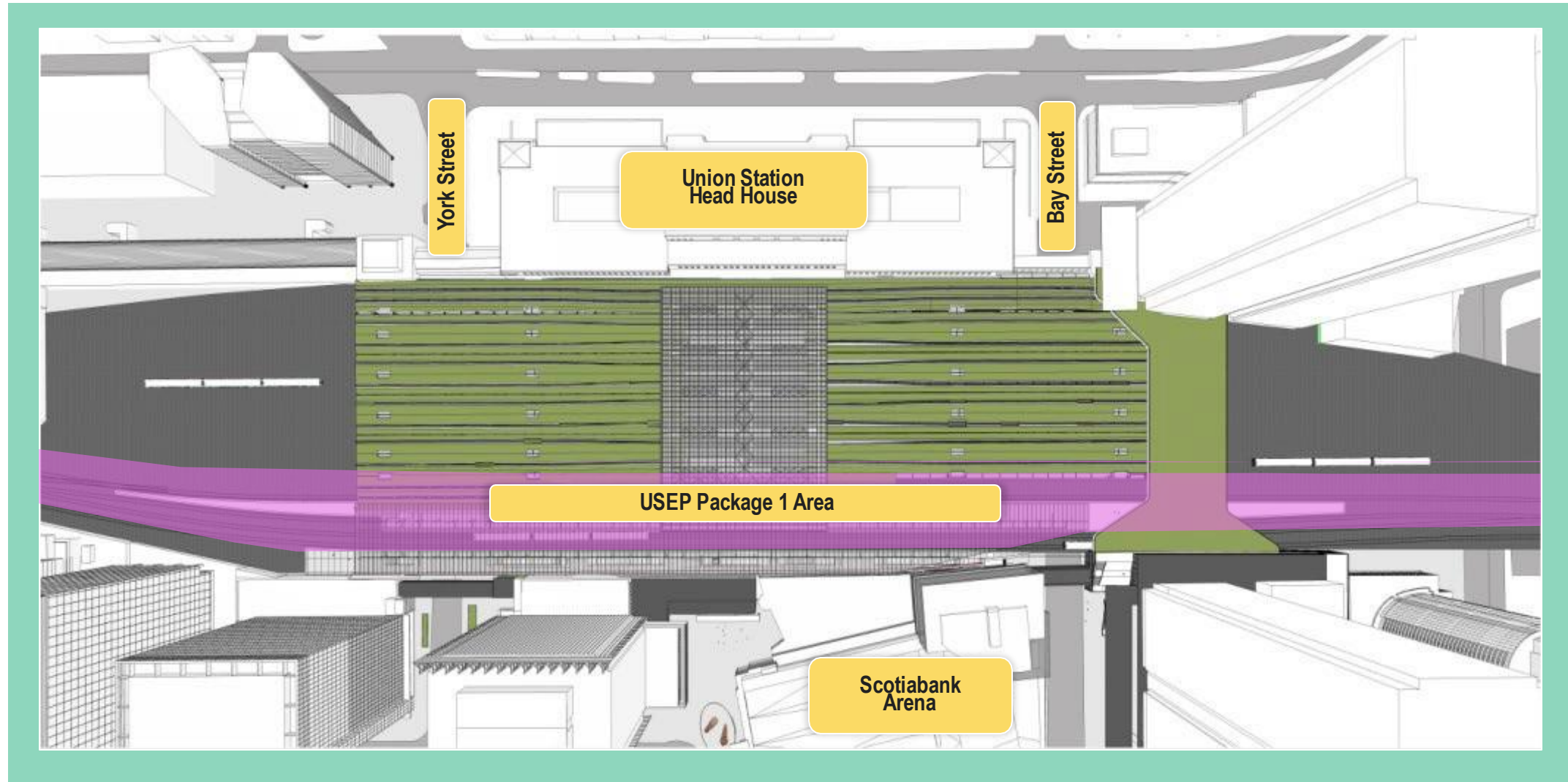


The Union Station Enhancement Project (USEP) is a GO Expansion Enabling Works project that is required in advance of the On-Corridor Works project in order to facilitate future track closures for the reconstruction of platforms within the existing trainshed, and to optimize the overall On-Corridor Works construction schedule.

The USEP is required in addition to the rehabilitation and upgrades already completed or near completion at Union Station.



# UNION STATION ENHANCEMENT PROJECT



# CONCEPTUAL RENDERINGS



**Figure:** Conceptual rendering of continuous concourse from York Street to Bay Street



# CONSTRUCTION UPDATES

# UNION STATION ENHANCEMENT PROJECT CONSTRUCTION

- **Demolition, Excavation, and Foundation Activity - Phasing**
  - Progress of demolition, excavation, and foundation work in Areas A - J.
- **Truck Tunnel Demolition**
  - Activity sequence update
- **Customer Communications**
- **Next Steps**



# TRACK LEVEL - PROGRESS



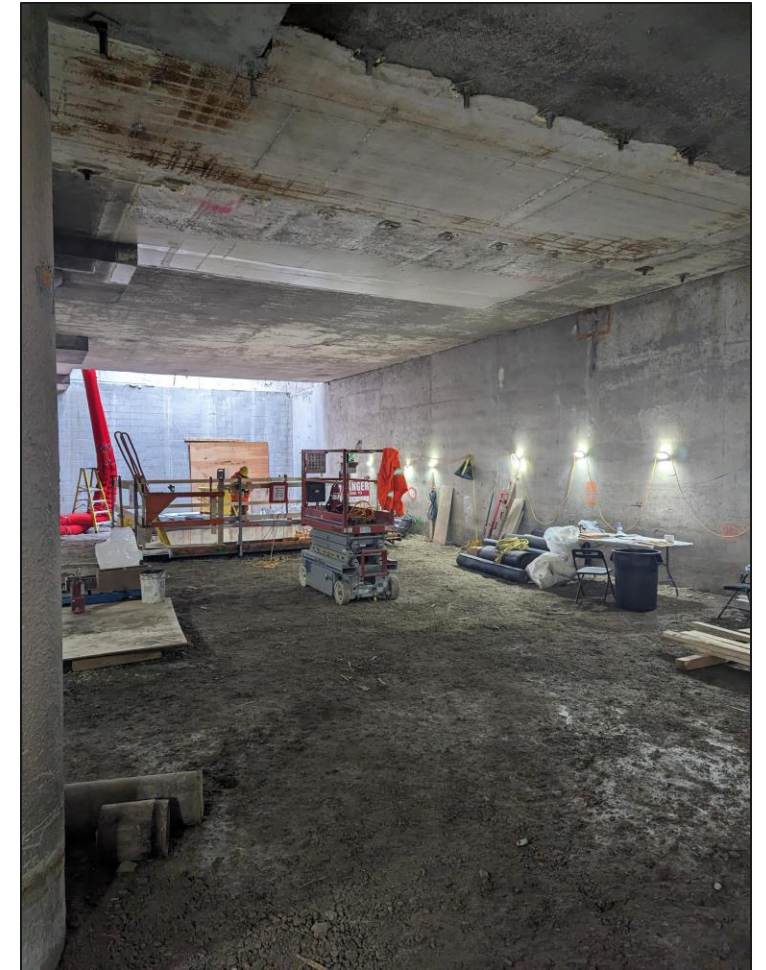
**Photo:** Areas F/G - April 2024

# TRACK LEVEL - WEST OF YORK ST (AREA A)

## Track Level

- Mechanical Room 4
  - Excavation and installation of lock block support of excavation in progress
- Secant wall pile shaving to start in late April/early May
  - Potential noise and vibration impacts to York West Teamway and 18 York Street

**Next steps:** cap beam installation on secant wall



**Photo:** York West Teamway (behind OTA hoarding)





# TRACK LEVEL - EAST OF YORK ST (AREA B)

## Enwave

- Preparation for Enwave
  - Wall pouring complete, concrete curing ongoing
    - **Next Steps:** stripping of formwork, closing formwork
- Anticipated start of Enwave scope of work: late June, 2024
  - OTA reviewing work plan

## York East Teamway

- Demolition of south wall ongoing
  - Wire sawing and chipping of the south abutment wall may lead to vibration and noise impacts
- Excavation for future footings is ongoing
  - Next steps: caisson chipping, reinforcement installations



**Photos:** York East Teamway – demolition of openings



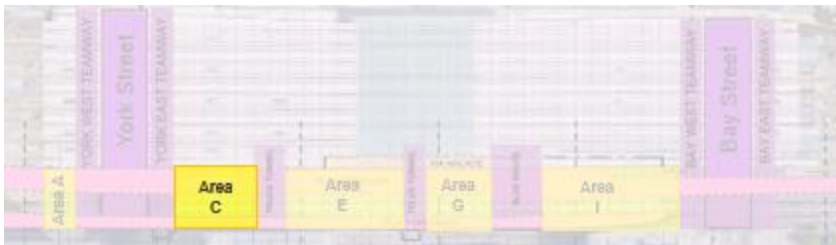
# TRACK LEVEL - EAST OF YORK ST (AREA C)

## South side

- Backfilling, column and wall installation ongoing
  - South wall rebar work complete
    - **Next Steps:** Formwork, concrete pouring of south wall, underground utility installations

## North side

- Backfilling, fine grading, methane and sanitary pipe installations complete
- Trenching for electrical conduits in progress



**Photo:** Area C – South Wall rebar installation

# TRUCK TUNNEL (AREA D)

- Upcoming activities in the truck tunnel:
  - Decking installation and core hole drilling in north flare to support formwork (above double tees)
  - Stair installation on west wall
    - To be completed April 15 - April 26 (starting 4pm, Monday - Friday)
  - Reinforcement installations (with spotter)
    - April 21<sup>st</sup>



**Photo:** Truck Tunnel final Double Tee installation – before and after

# TRACK LEVEL - AREA E

## South side

- Building Mechanical Room 1
  - South wall concrete pour complete
  - North wall rebar installation ongoing
    - **Next steps:** formwork, concrete pouring of the north wall

## North side

- Grounding and plumbing installations complete
- Sanitary trenching underway
- Excavation and backfilling ongoing
  - **Next steps:** methane piping installations and testing



**Photo:** Area E Mechanical Room:  
North wall rebar work



# TRACK LEVEL - AREAS F/G

## South side

- Pile cap installations and detailing ongoing
- Column installations ongoing
- Grade beam preparation work in ongoing on the south wall

**Next steps:** rebar work, concrete pouring

## North side

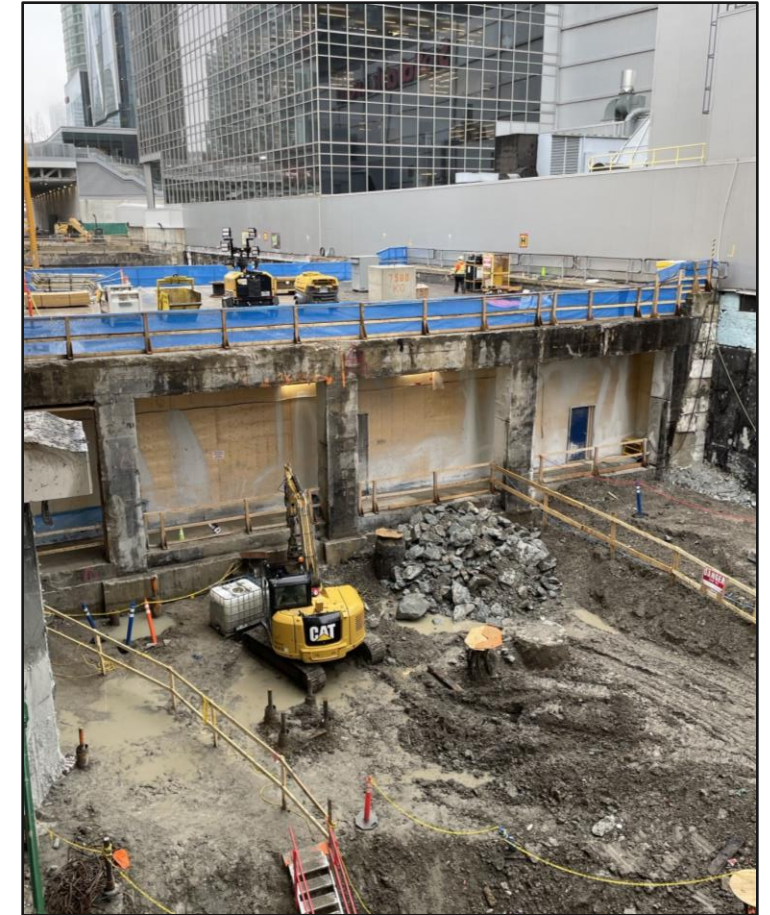
- Demolition and excavations ongoing
  - Demolition and chipping of existing caissons ongoing
  - Excavation ongoing for future pile caps and SOE installations
- Additional atrium support work to be completed including grade beam and wall installations



**Photo:** Area F/G Atrium Support Columns

# TRACK LEVEL - AREA F/G

- Electrical Relocations
  - OTA coordinating concrete pour to reinstate floor in MLSE's west coat check room
  - 120V relocation investigations ongoing
    - Additional investigations are needed
- Manhole investigations scheduled April 24 - 25



**Photo:** Blue Route openings on the West Wall



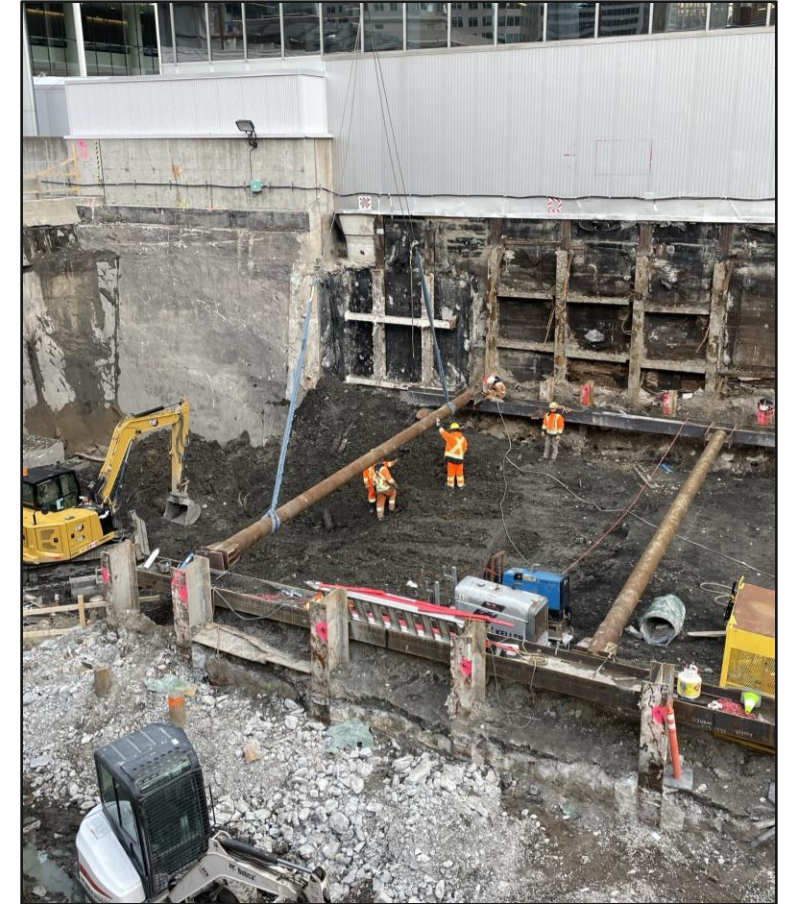
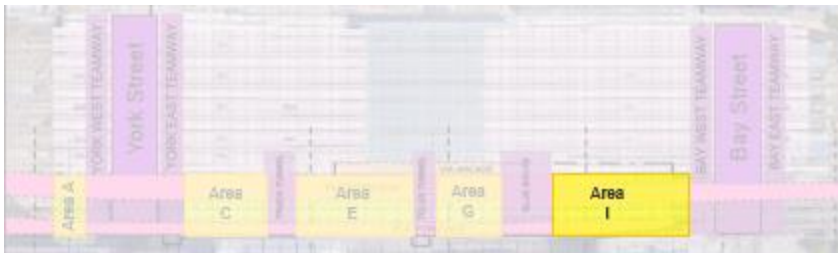
# TRACK LEVEL - AREA I/J

## Area I

- Demolition and excavation ongoing
  - Support of Excavation installation for deep foundation work ongoing
  - Installation of struts to support excavation
  - Clean-up of flooded area underway
    - **Next steps:** Deep excavation

## Area J

- **ON HOLD** - design development



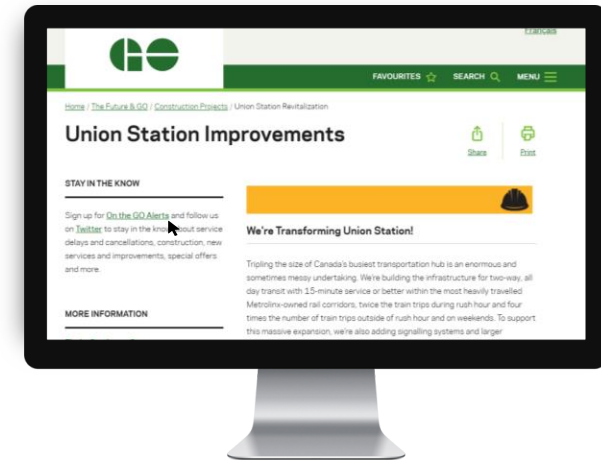
**Photo:** Area I - Support of Excavation Installation

# CUSTOMER UPDATES

# CUSTOMER UPDATES

No customer updates for the month of April.

**Construction updates posted on the web at:**  
**[Union Station Improvements](#)**  
**Register for [On the GO alerts](#) to stay in the know**



# NEXT STEPS





**@Metrolinx**



**@GOExpansion**



**<https://www.metrolinx.com/union>**



**TorontoWest@metrolinx.com**

