

Duke St. (Breithaupt-Victoria) Gas Main Replacement

August 9, 2025

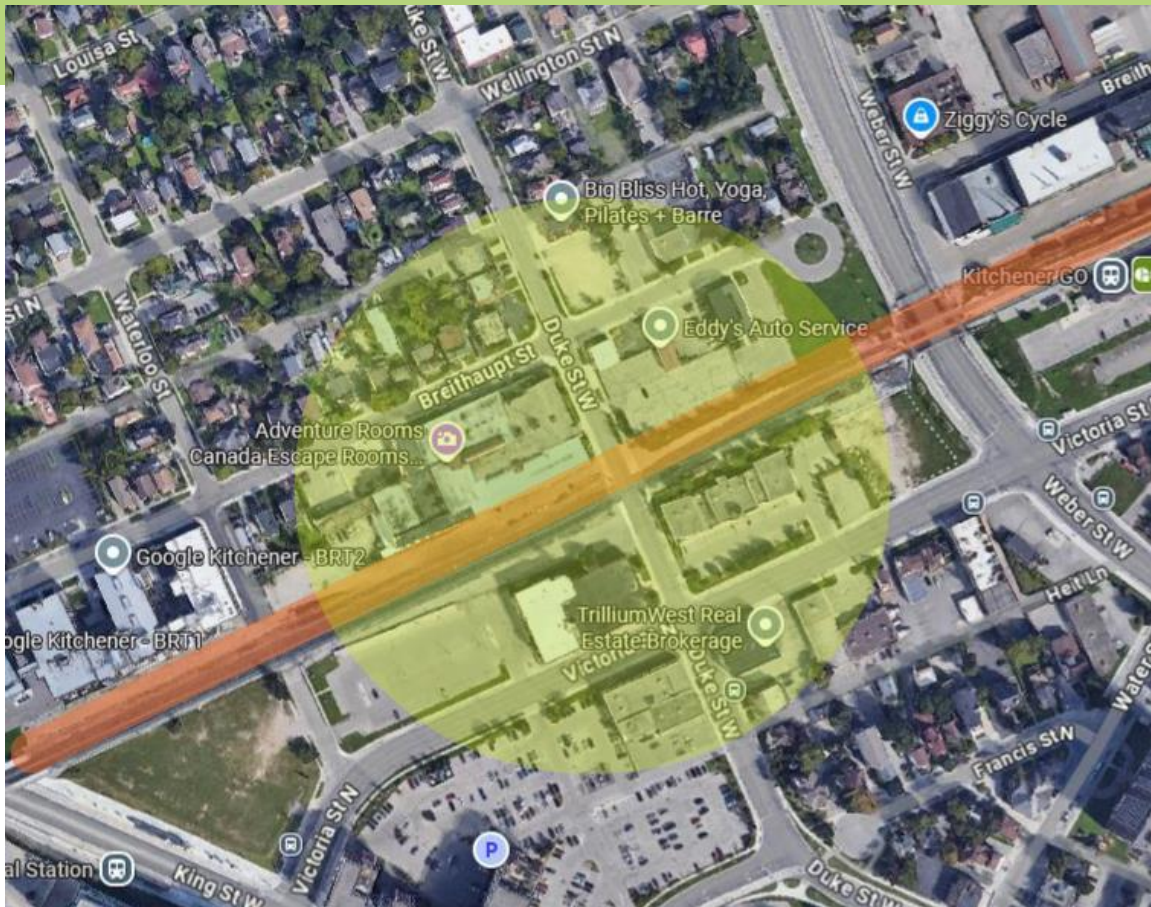


Figure 1: Site Overview

OVERVIEW

Metrolinx is bringing faster, more frequent service to the Kitchener Line. Construction is now underway on projects that will make way for improvements to bring two-way, all-day service from Union Station to Kitchener GO Station.

PURPOSE

Kitchener Utilities and contractor NPL Canada will replace a natural gas main as part of road reconstruction by Metrolinx involving elevation changes near the railway tracks.

Information as of: July 25, 2025

WHAT IS HAPPENING?

- Starting August 9, crews will be conducting overnight work which will last for about **6 weeks**, weather permitting, with an expected completion of September 26th.
- Heavy equipment, such as directional drills, excavators, welding, vacuum trucks, and monitoring equipment will be required to complete the work.

WHAT THIS MEANS FOR YOU

- From August 15-17 and August 23-24 residents may hear noise throughout the late evening and into the early morning (10:30pm - 7:00am). Crews may be on site between those dates, and work could extend to early fall.
- Work will take place within the rail corridor. From August 11-September 26: Duke Street will be closed between Breithaupt and Victoria.
- September 5-8: Breithaupt will be closed at Duke.
- September 5-26: Two southwest-bound lanes of Victoria closed; two-way traffic maintained using remaining lanes.
- Please note construction schedules could change with short notice due to weather or unforeseen circumstances. The Community Engagement team will make every effort to provide advance warning of any changes. Construction notices are posted on our website: www.metrolinx.com/kitchener.

QUESTIONS

Contact:

Sylvie Eastman, Utilities Engineer, Kitchener Utilities - Cell: 519-498-9553

Kristi Bishop, Site Inspector, Kitchener Utilities - Cell: 519-505-4770

Grant Rhodes, Foreman, NPL - Cell: 416-521-5484

We understand that while necessary, this work is potentially disruptive to nearby residents. We appreciate your patience and understanding. Our Community Engagement team is available to answer your questions by email, Monday - Friday, 8:30 a.m. - 4:30 p.m. at **WaterlooRegion@metrolinx.com**.

To receive updates about future Metrolinx projects and services in your area, sign up for the Waterloo Regional E-newsletter at metrolinx.com/subscribe.

This notice can be translated into a different language upon request by emailing us at: WaterlooRegion@metrolinx.com

Veuillez trouver l'avis de construction en français ici : www.metrolinx.com/kitchener-docs-f

Contact Us:

- ✉ Write to us at: WaterlooRegion@metrolinx.com.
- 🐦 Find us on Twitter [@GOExpansion](https://twitter.com/GOExpansion) [metrolinx.com](https://twitter.com/metrolinx.com)
- 🌐 Visit the website: www.metrolinx.com/kitchener
- 📧 Subscribe to our e-blast: www.metrolinx.com/subscribe