

# LAND ACKNOWLEDGEMENT

Metrolinx acknowledges that we connect communities by building and operating transit within the traditional lands of the Anishinaabe, the Haudenosaunee and the Huron-Wendat peoples, for whom these lands continue to have great importance.

Treaties between First Nations and governments cover these lands, and the promises contained in these Treaties remain relevant to this day.

Metrolinx and its employees are committed to understanding the history of these lands and the continued impacts of colonization and take responsibility for actions to advance reconciliation.

Metrolinx will continue to seek the knowledge, expertise and experience of Indigenous partners and commits to doing business in a manner that is built on a foundation of trust, respect, and collaboration.



# **Construction Liaison Committee Site-Walk**

## **Pape-Riverdale**

**July 29, 2025**



# Microtunnelling

## Progress update:

- Microtunnelling mobilization took place throughout the first three weeks of July.
- Following successful testing of equipment, microtunnelling of the storm sewer under the eastern portion of the Pape Avenue Junior Public School yard began on July 24.

## What's next:

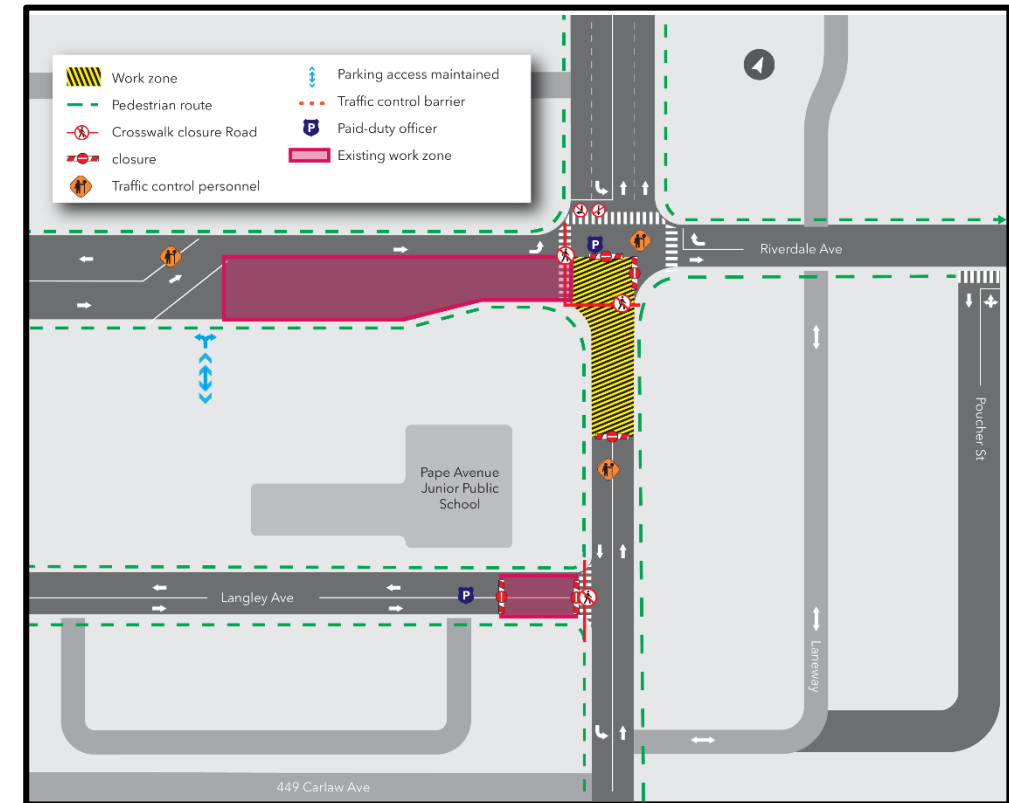
- Microtunnel boring will take approximately six weeks to complete, and work will take place from 7-7 on weekdays and 9-7 on weekends.
- After microtunnelling, crews will tie in the new sewer to the existing one, then backfill to street level and restore the roadway.
- The next stage of work after storm sewer replacement will be water main and combined sewer work on Pape Avenue.



Microtunnel launch shaft -  
Riverdale

# Upcoming Work: Manhole Diversion

- In August, two short phases of work will take place to install manhole diversions in advance of combined sewer installation (scheduled for fall).
- Each stage will take three days to complete. Phase 1 is pictured right.
- This work will happen concurrently with storm sewer microtunnelling.
- By conducting these phases of work now, the overall duration of combined sewer works and associated impacts on the community is shortened.
- When all details are finalized, a physical and digital notice will be distributed to the community.
- In both stages, additional paid-duty officers and traffic control personnel will be on site to facilitate traffic movement and three-point turns where required.
- During both stages, PCH pick-up drop-off will take place on Langley Avenue, supported by a paid-duty officer and TCPs.
- **Traffic and pedestrian details - phase 1:**
  - Pape Avenue will be fully closed south of Riverdale Avenue until approximately halfway to Langley Avenue.
  - The southern east-west crosswalk at the Pape & Riverdale intersection will be closed, in addition to the existing western north-south crosswalk closure. All sidewalks will remain open.
  - Phase 1 will take place on weekdays.

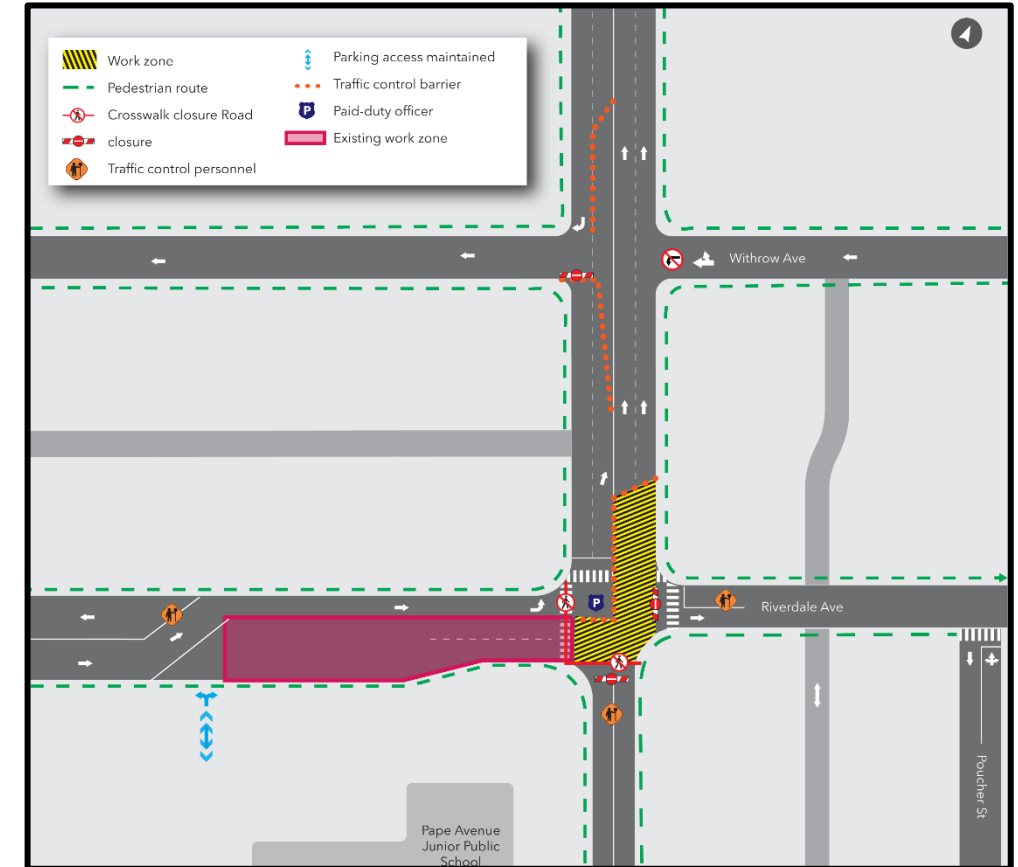


Phase 1

# Upcoming Work: Manhole Diversion

- **Traffic and pedestrian details - phase 2:**

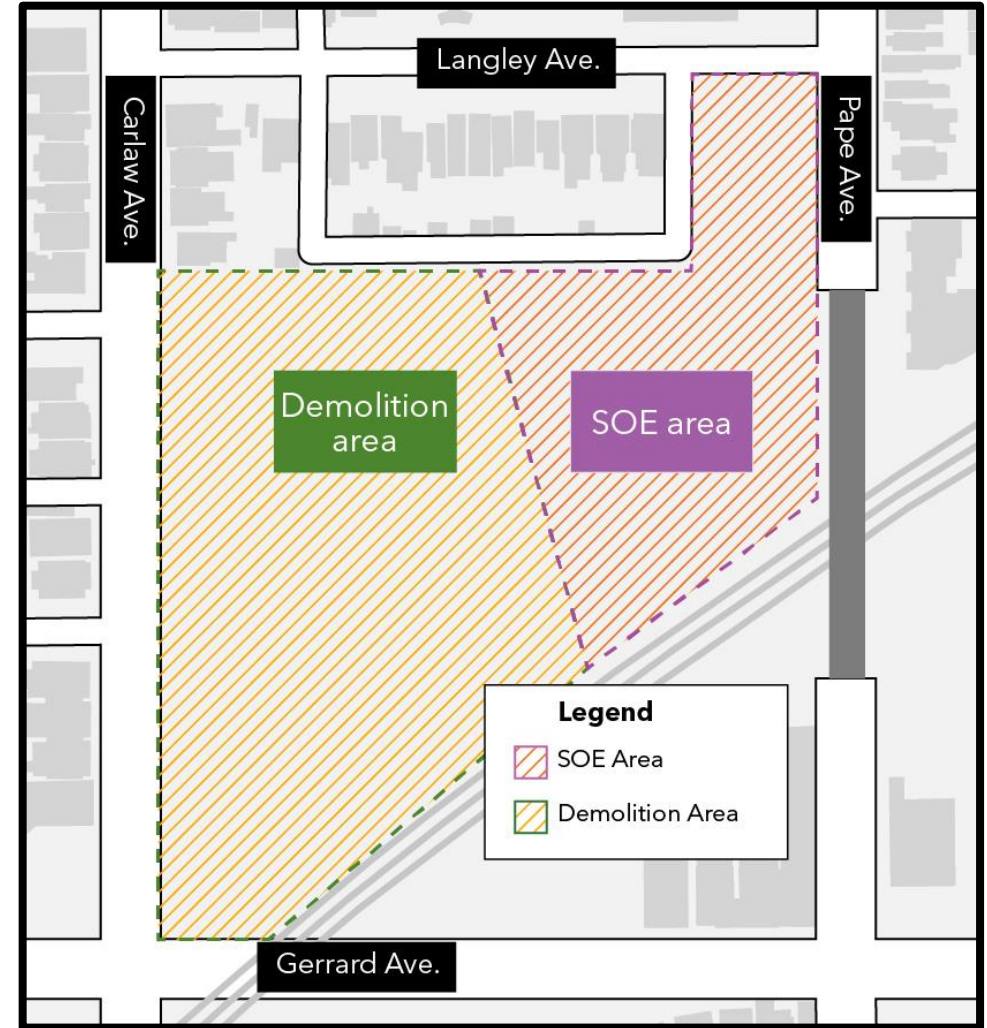
- Pape Avenue south of Withrow Avenue will be closed to southbound traffic.
- The Pape & Riverdale intersection will be closed to all traffic except eastbound traffic on Riverdale, who will be forced to divert north.
- The northern east-west crosswalk at the Pape & Riverdale intersection will be closed, in addition to the existing western north-south crosswalk closure. All sidewalks will remain open.
- Phase 2 will take place over a weekend (Friday-Sunday).



Phase 2

## Work at the Gerrard Portal

- Structural demolition continues and is expected to be complete in fall 2025.
- Abatement work is ongoing at the southwest demolition area.
- The current phase of work involves preparing the Gerrard portal site for excavation and the eventual construction of the tunnel boring machine launch shaft.
- Pile drilling and concrete pours at the northeast end of the site (Support of Excavation (SOE) area) has begun.
- Additional work includes ongoing relocation of underground utilities (hydro, Rogers/ Bell, water, storm and sanitary sewer).



*A simplified map of the Gerrard Portal site with SOE and demolition areas delineated as of July 2025. Site layout is subject to change.*



## Support of Excavation – Gerrard Portal

- Piling work involves:
  - Drilling piles involves using large drills to create vertical holes in the ground.
  - Steel reinforcement cages are inserted into the drilled holes to provide additional strength and stability.
  - Finally, concrete is poured into the holes, securing the piles in place. Temporary casings are used during drilling.
- Once excavation supports are installed, soil is removed, and concrete slabs will be poured to build a launch shaft to support tunneling activities and the launch of two tunnel boring machines.



*A drill rig performing piling works at the northeast end of the Gerrard Portal site.*

## Geotechnical instrumentation and monitoring

- To enable Ontario Line construction, a geotechnical instrumentation monitoring program will begin along Pape Avenue and surrounding streets.
- Structural monitoring tools (instruments) will be placed within and close to our work sites to help monitor and protect nearby structures.
- Work involves the use of a coring machine, hydrovac truck and a track-mounted drill rig.
- Depending on the required instrumentation, installation will take between one hour to one day.
- Each work zone will be temporarily blocked off for safety until installation is complete.
- There will be temporary impacts to pedestrian access, traffic lanes and on-street parking.
- Efforts will be made to not leave equipment on-site outside of work hours.
- Once in place, these tools will record vital geotechnical and utility information and be regularly checked throughout construction.

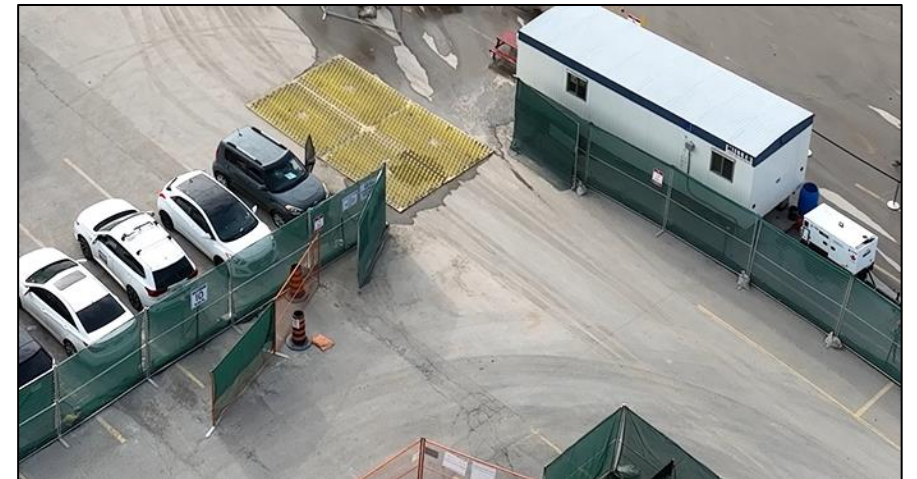


*An example of a monitoring instrument during installation. After installation, instrument covers lay flush with the ground and the pylons are removed.*



## Environmental mitigation strategies (dust)

- All sites near Pape-Riverdale are regularly sprayed with water to help settle and reduce dust particulates in the air. At Gerrard Portal, a water truck is located on site.
- Air quality monitors are located around all work areas. In the event of exceedances, additional mitigation measures are implemented on-site to ensure compliance.
- Sediment membranes (filter cloths) and absorbent sediment materials (silt socks) have been installed in catch basins within and outside of sites to limit debris and pollutants from entering storm drain systems.
- Mud mats are installed at the Gerrard Portal site to remove mud from tires as vehicles leave the site.

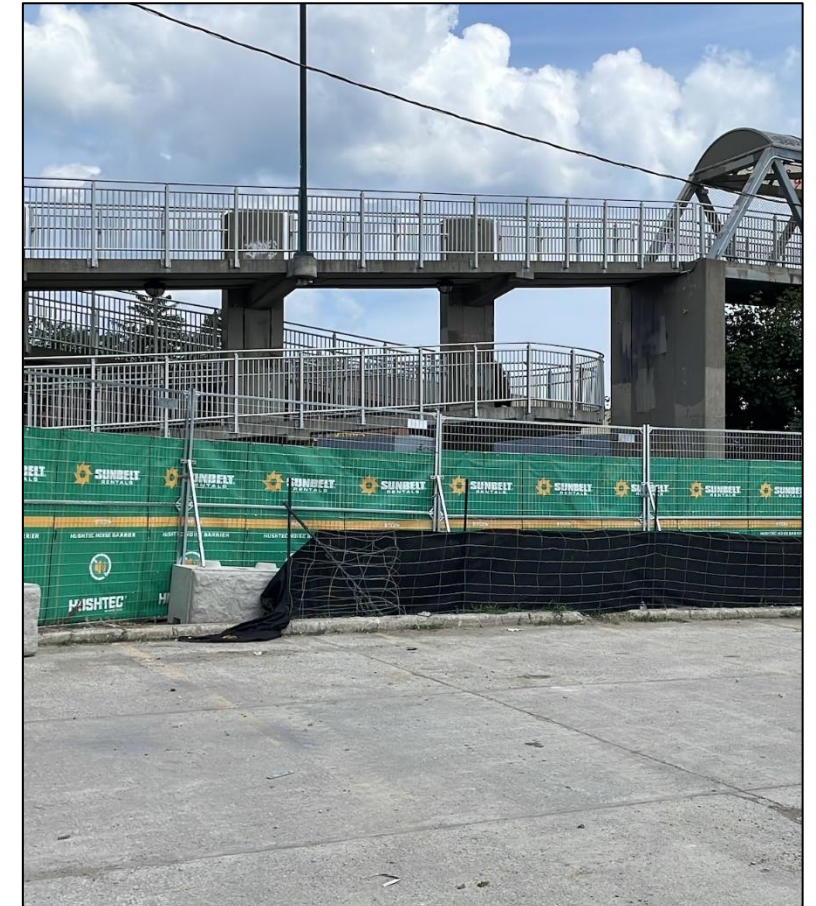


*Clockwise from the left:  
Spraying of water at site to reduce dust, a filter cloth at a catch basin, mud mats at the construction site entrance and exit.*



## Environmental mitigation strategies (noise and vibration)

- Noise and vibration monitors are installed prior to the start of construction. These devices are used to ensure compliance with noise and vibration limits take corrective actions if noise and vibration are approaching the limits.
- In the event of any vibration or noise exceedances, real time notifications are issued to members of the construction team, environment team and the contracting authority.
- Vibration or noise exceedances are reviewed in real-time to determine if they were caused by construction. If they were, additional mitigations are implemented.
- Noise blankets have recently been installed at some locations along the site fencing for additional noise mitigation.



Left to right:  
A noise and vibration monitor near site, a noise blanket installed on the fencing of the site.

# The Ontario Line

#	Activity	Location	Expected Start	Expected Duration	Impact	Hours of Work	Mitigations
1	Geotechnical instrumentation and monitoring	Select sites along Pape Ave	July 2025	Until project end	Ongoing monitoring will take place throughout construction	For monitor installation: Mon -Fri 7:00 am - 7:00 pm	Dust mitigation includes misting, sweeping and hydrovac trucks. Erosion and sediment control.
2	Subsurface utility investigations	Select sites along Pape Ave	Oct 2024	10 months	Noise and vibration	Mon -Fri 7:00 am -7:00 pm	Dust mitigation includes misting, sweeping and hydrovac trucks. Erosion and sediment control.
3	Utility disconnections	Gerrard Portal	Oct 2024	12 months	Work to take place within construction site	Mon -Fri 7:00 am -7:00 pm	N/A
4	Additional Building Abatement	Gerrard Portal	July 2025	1 month	Work to take place within construction site	Mon -Fri 7:00 am -7:00 pm	N/A
5	Demolition	Gerrard Portal	Mar 2025	6 months	Vibration, noise, air quality, traffic, lane and sidewalk closures	Mon -Fri 7:00 am -7:00 pm	Noise, vibration and air quality monitoring. Temporary fencing with mesh dust screens. Dust mitigation includes mud mats, street spraying and sweeping, work stoppage during high winds
6	Support of Excavation	Gerrard Portal	July 2025	12 months	Vibration, noise, air quality, traffic	Mon-Fri 7:00 am - 7:00 pm Sat 9:00 am - 7:00 pm	Noise, vibration and air quality monitoring. Dust mitigation includes mud mats, street spraying and sweeping. Traffic mitigations include designated hauling routes



## The Ontario Line

#	Activity	Location	Expected Start	Expected Duration	Impact	Hours of Work	Mitigations
9	Utility relocation	Bain EEB	April 2025	Ongoing	Vibration, noise, air quality, traffic, lane and sidewalk closures	Mon- Fri 7:00 am - 7:00 pm	Dust mitigation includes misting, sweeping and hydrovac trucks. Erosion and sediment control.
10	Support of Excavation	Bain EEB	Late Summer 2025	15 months	Vibration, noise, air quality, traffic, lane and sidewalk closures	Mon-Fri 7:00 am - 7:00 pm Sat 9:00 am - 7:00 pm	Noise, vibration and air quality monitoring. Dust mitigation includes mud mats, street spraying and sweeping. Traffic mitigations include designated hauling routes
11	Storm Sewer Microtunnelling	Pape-Riverdale to Pape-Langley	July 24	Six weeks	Vibration, noise, traffic, lane closures	Mon-Fri 7:00 am - 7:00 pm Sat 9:00 am - 7:00 pm	Noise, vibration and air quality monitoring. Designated hauling routes, flaggers, and paid-duty officers
12	Combined Sewer Manhole Diversions	Pape-Riverdale	August (exact dates TBC)	Six days	Vibration, noise, air quality, lane and crosswalk closures	7:00 am - 7:00 pm	Noise, vibration, and air quality monitoring. Additional paid-duty officers, traffic control personnel.