

Ontario Line

Thorncliffe Park

Construction Liaison Committee

July 31, 2025

LAND ACKNOWLEDGEMENT

Metrolinx acknowledges that we connect communities by building and operating transit within the traditional lands of the Anishinaabe, the Haudenosaunee and the Huron-Wendat peoples, for whom these lands continue to have great importance.

Treaties between First Nations and governments cover these lands, and the promises contained in these Treaties remain relevant to this day.

Metrolinx and its employees are committed to understanding the history of these lands and the continued impacts of colonization and take responsibility for actions to advance reconciliation.

Metrolinx will continue to seek the knowledge, expertise and experience of Indigenous partners and commits to doing business in a manner that is built on a foundation of trust, respect, and collaboration.



Session Guidelines

We greatly appreciate the community members who are here to take part in this public session.

To ensure that everyone can contribute to a positive and safe community experience, all participants shall adhere to the following *Code of Conduct*:

- Treat the presenters and participants with respect and understanding
- Acknowledge and appreciate the diversity of individuals and their situations
- Refrain from supporting or engaging in any form of discriminatory behaviour

Metrolinx is committed to fostering a safe and respectful environment.

We encourage respectful and constructive communication.

AGENDA

1. Welcome

- Land Acknowledgement
- Session Guidelines
- Agenda
- Safety Moment
- Construction Update (video)

2. Advanced Works

- Traffic Impacts
- Demolitions
- Third-party Utility Relocations

3. Beth Nealson Underpass

- June - July Progress
- Eight week lookahead

4. West Don Crossings

- June - July Progress
- Eight week lookahead

5. Thorncliffe Park Guideways and Station

- June - July Progress
- Eight week lookahead

6. Operations, Maintenance and Storage Facility

- June - July Progress

7. Community Issues and Responses

8. Action Items

Safety Moment - Staying Safe in the Heat

Warm weather means more time outdoors – and a higher risk of mosquito and tick bites. These pests aren't just annoying – they can spread diseases like Lyme disease and West Nile virus.

Stay safe with these tips:

- Use insect repellent with DEET
- Avoid outdoors at dawn/dusk when mosquitoes are most active
- Wear long sleeves, pants, and tuck clothing in
- Stick to clear trails and avoid tall grass
- Do tick checks after being outside
- Check pets regularly and use vet-approved repellents
- Eliminate standing water around your home



Construction Update:Metrolinx Minute



Advance Works

Overview of Advanced Works

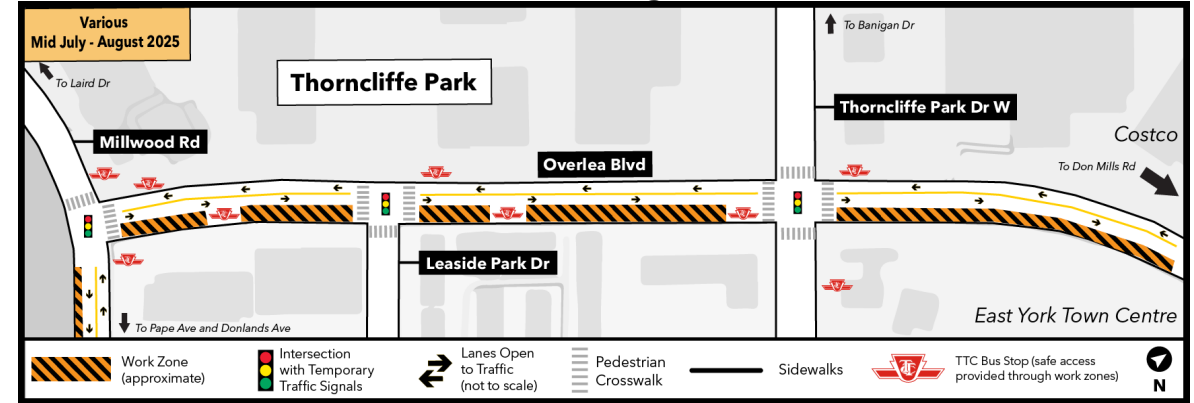
- Enbridge installation of gas main along Overlea Boulevard is now complete.
- On July 21 GIP resumed their work on Overlea Boulevard to continue the final portion of the Advanced Works.
- Expected completion date for all Advanced Works is end of September 2025.
- Periodic noise and vibration impacts are expected. Monitors are in place to ensure any exceedances can be addressed.
- Currently GIP is prioritizing energization of the newly installed watermain
 - Water service impacts are expected and will be scheduled overnight.
 - This work is currently being completed utilizing localized traffic control plans to limit the impact to traffic.
 - Turns will be allowed in both directions where currently allowed.



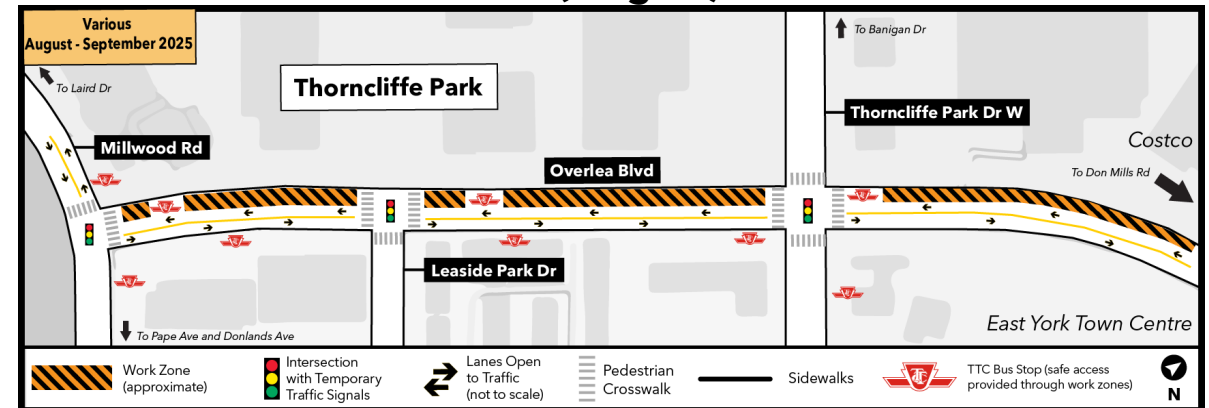
Overlea Traffic Impacts

- South Side Overlea Boulevard (Stage 2) for approximately four weeks. Starting on August 5th, 2025. This stage will be in place for approximately 4 weeks
- North side Overlea Boulevard (Stage 3) traffic staging will be implemented following stage 2. It will be in place until the end of September 2025.
- Both of these stages are required to accommodate road works, streetlight installation and remaining sewer/watermain work.
- Paid Duty Officers (PDOs) to be onsite as needed to assist with traffic movement.
- GIP will make all efforts to ensure left and right turns are maintained at intersections between Millwood and Thorncliffe Park Drive.

South Side Overlea Boulevard (Stage 2)



Northside Overlea Boulevard (Stage 3)

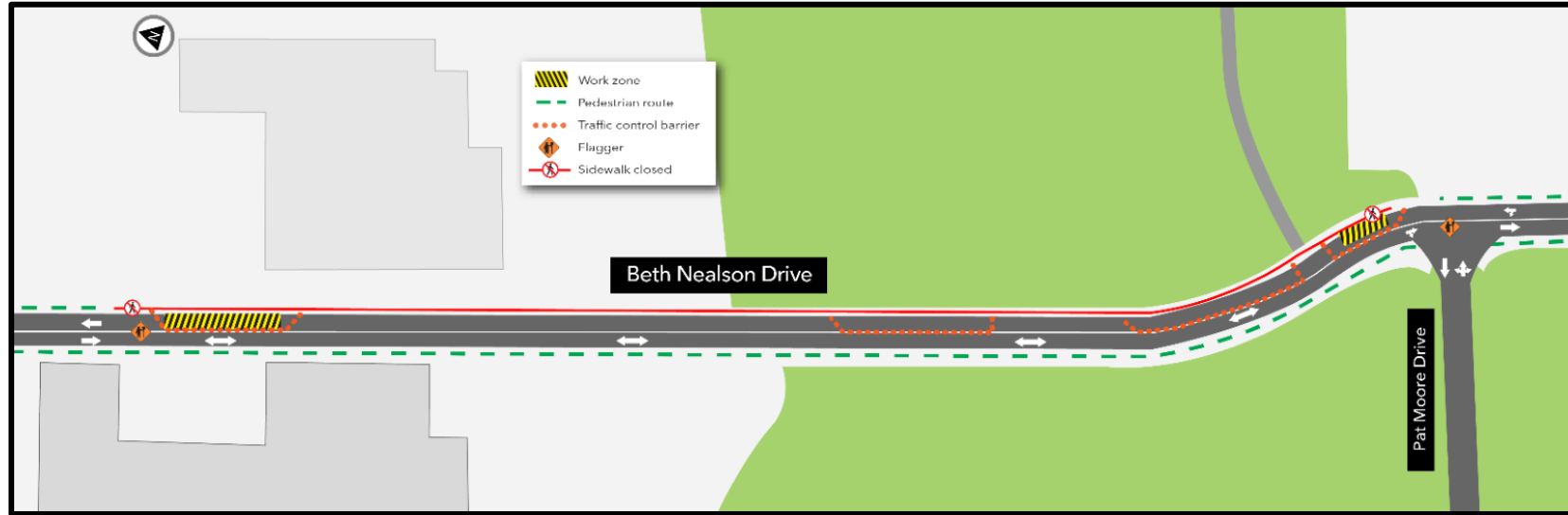


Banigan Drive Building Demolition

- Demolition of properties on Banigan Drive will begin in September 2025.
- Hoarding will be installed around the demolition site to mitigate noise and dust, and to provide a protective barrier between the site and the public.
- Additional noise, vibration and air quality monitors are in place gathering baseline information prior to demolition works starting.
- Water trucks will be used as needed to suppress any dust created by the demolition.
- This work will take place on weekdays between 7 a.m. – 5 p.m.
- Demolition work will continue until Fall 2025.



Beth Neilson Drive Utility Relocations - Ongoing to December 2025



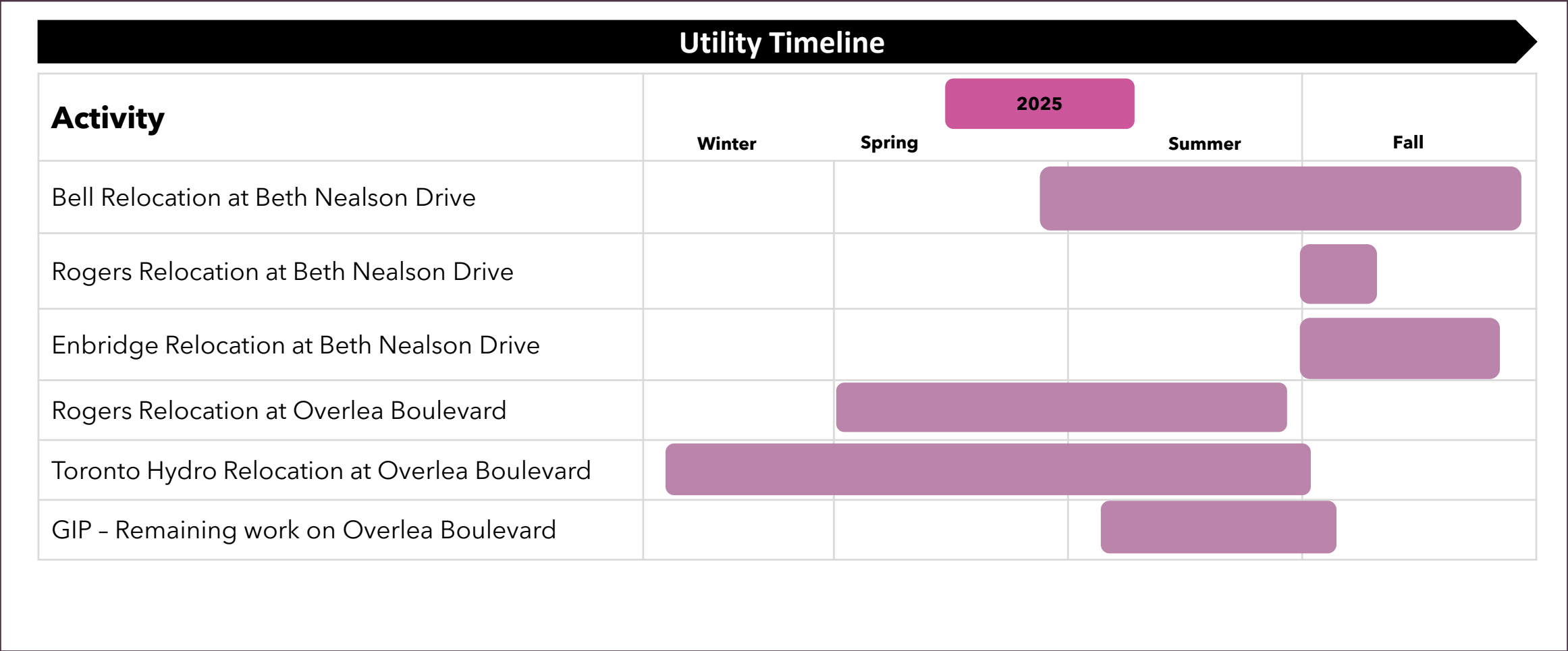
Bell

- Direction drill work has been completed, chamber builds are currently in progress, and cable installations will follow.
- Civil works will be complete by early August.
- Cabling and splicing will commence, we do not expect major road closures with minimal intrusive work.

Enbridge

- Enbridge has completed weekend test pits investigation.
- Enbridge is currently awaiting permitting approvals to occupy the area, target date is September/October.
- Enbridge is expected to work day shifts to carry out the relocations.

Utility Work Timeline - 2025

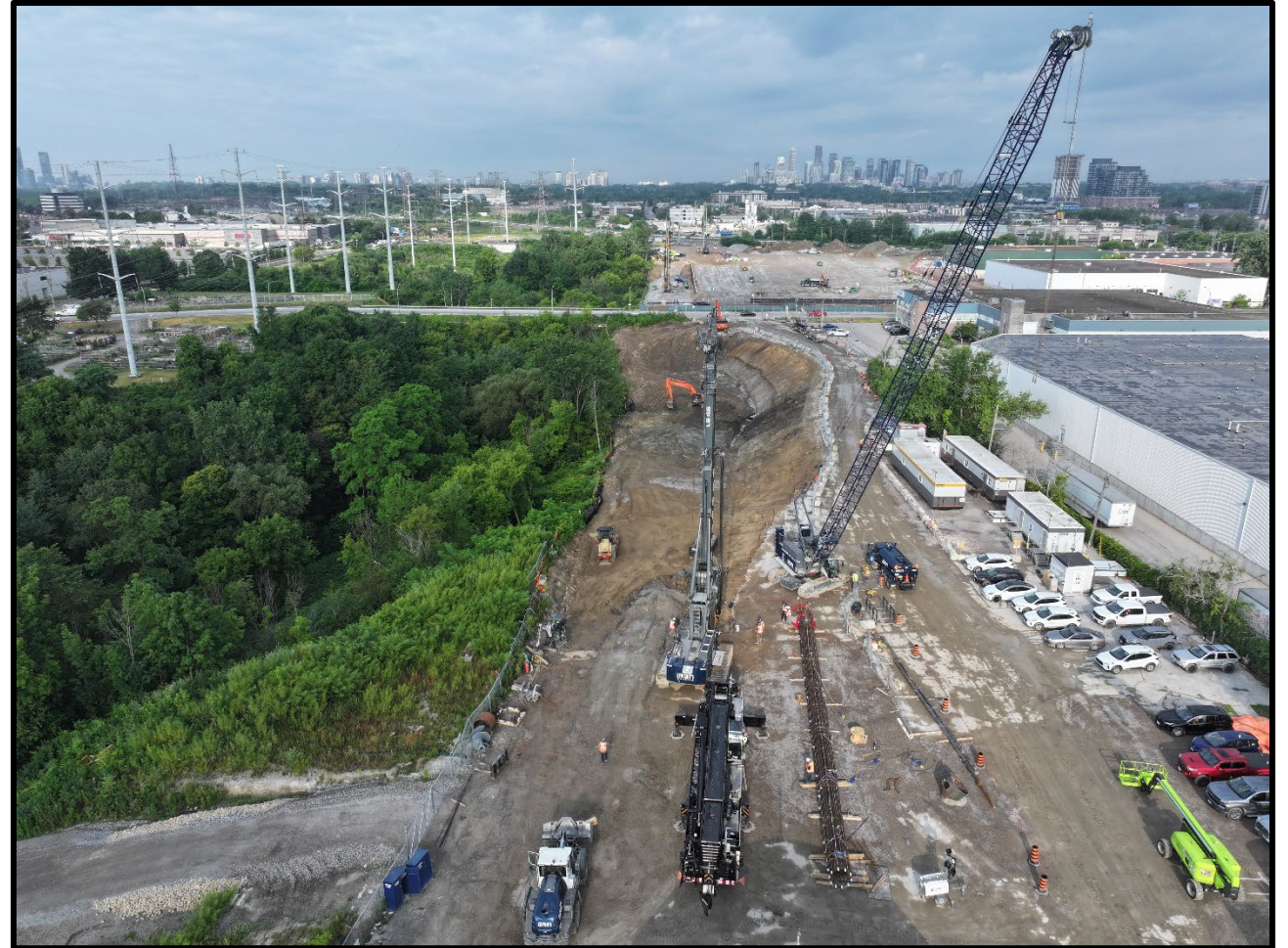


Beth Nealsen

Underpass Works

Beth Neilson Underpass - June to July Progress

- Excavation continues in the work area adjacent to Beth Neilson Drive.
- Preparations are underway for upcoming caisson installation works for a track retaining wall adjacent to Beth Neilson Drive. Test caisson piles have been drilled, with concrete pouring to commence soon.
- Flaggers have been mobilized to site to assist in directing construction traffic in and out of the job site.



Eight Week Look-Ahead: July 2025

#	Activity	Location	Expected Start	Expected Duration	Impact	Hours of Work	Mitigations
1	Excavation for track retaining wall	Beth Nealson Underpass	Ongoing	4 months	Vibration, noise, air quality	7:00 am 5:30 pm	Vibration monitoring, noise monitoring, air quality monitoring
2	Drilling and caisson installation for West Wall		Ongoing	3 months		7:00 am 5:30 pm	

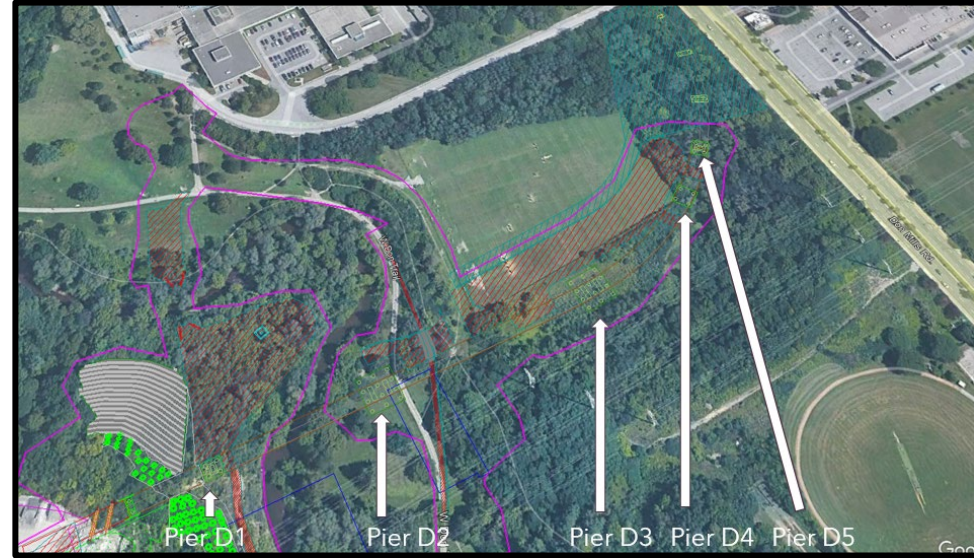
West Don Crossing Works

West Don Crossing - Overview



This rendering provides a representation of the West Don Crossing within the E.T. Seton Park.

West Don Crossing - June to July Progress



- Excavation for the pile caps at Piers D2 and D5 have been completed.
- Concrete pours have been performed at Piers D3 and D5 of the West Don Crossing.
- Rebar has been installed at Pier D4.
- Access road and laydown area are installed for the Pier D1 area.
- The installation of the cofferdam has been completed.
- The construction of the toe berm continues.
- Begun clearing the vegetation at the D1 Slope.

Eight Week Look-Ahead: July 2025

#	Activity	Location	Expected Start	Expected Duration	Impact	Hours of Work	Mitigations
1	Toe Berm	West Don Crossing	April (Ongoing)	3 months	Vibration, noise, air quality	7:00 am-5:30 pm	Vibration monitoring, noise monitoring, air quality monitoring
2	Pier foundation works at Pier D2 & D4		June (Ongoing)	2 Months		7:00 am-7:00 pm	
3	Soil Nailing & Anchor		Ongoing	6 months		7:00 am-5:30 pm	
4	Backfilling Pier Caps		Ongoing	2 months		7:00 am-5:30 pm	

Thorncliffe Park Station and Guideways

Future Thorncliffe Park Elevated Guideway

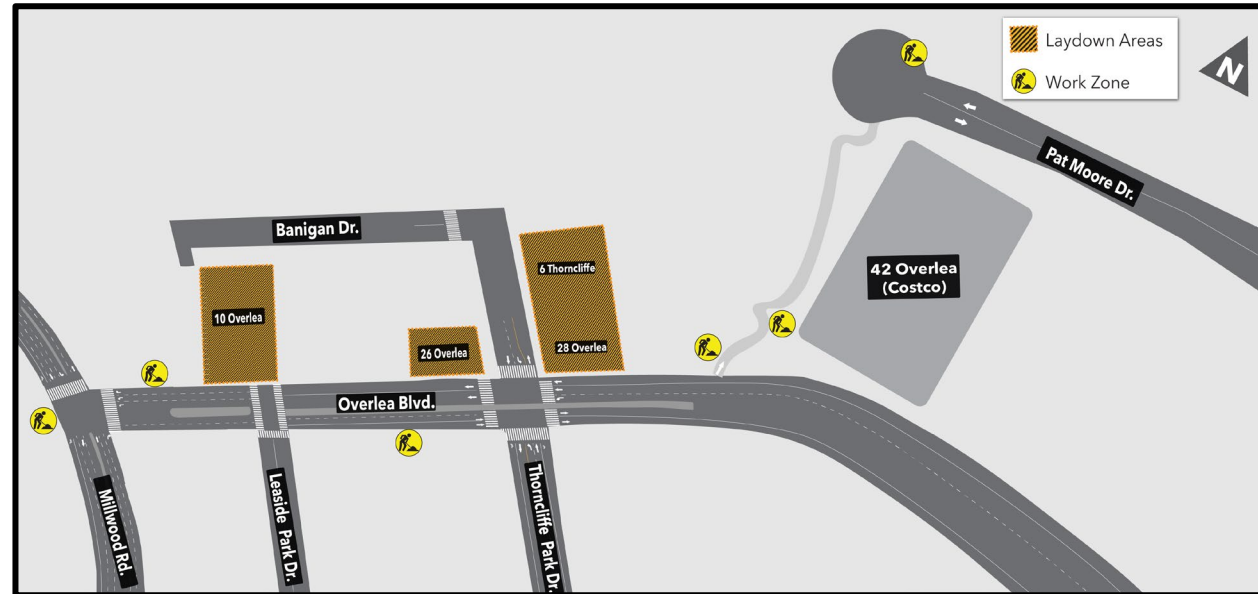
- The elevated guideway will be supported by deep foundation piles with diameters ranging from 1.5 to 2.4 metres and installed to depths between 20 and 50 metres beneath the surface.
- The top of the guideway will be constructed at an elevation of approximately 9 to 10 metres above ground level, spanning a total width of approximately 11 metres.
- A total of 21 piers will be installed to support the guideway segment extending between Millwood Road and Thorncliffe Park Station.



Elevated guideway along Overlea Boulevard from Millwood Road to Thorncliffe Park Station looking east.

This rendering provides an overview of the guideway alignment. Specific design details are still being finalized and will be presented at a later CLC meeting.

Upcoming Work: Elevated Guideway Test Pit Investigation



- Infiltration test drilling will begin as soon as Monday August 25 along Overlea Boulevard, Millwood Road and Pat Moore Drive.
- Work will take place between 7:00 a.m. and 7:00 p.m. Monday to Friday and is expected to take approximately one to two weeks to complete.
- Access to driveways will be maintained.
- Traffic lanes and sidewalks may be temporarily impacted near test drilling areas and will be restored at the end of each workday.
- The drilling process will have minimal impacts on the surrounding area.
- Construction crews will use a drill rig, hydrovac truck, hydro-geological equipment, and survey equipment.
- Noise and vibration monitors are in place to help manage construction impacts and ensure acceptable levels are maintained.

Eight Week Look-Ahead

#	Activity	Location	Expected Start	Expected Duration	Impact	Hours of Work	Mitigations
1.	Test pit investigation work	Overlea Boulevard	August 25, 2025	Two weeks	Minimal noise and dust	Daytime, 7 a.m. - 7 p.m.	Vibration, noise and air quality monitoring. Hoarding and/or screening on fencing will be used to minimize dust.
2.	Building demolition	28 Overlea Boulevard	September 2025	Until November 2025	Vibration, noise, and dust	Daytime, 7 a.m. - 7 p.m	Vibration, noise and air quality monitoring. Demolition activities will only occur during daytime work hours. Hoarding and/or screening on fencing will be used to minimize dust.
3.	Site laydown and preparation	Thorncliffe Park Station	September 2025	Until December 2025	Vibration, noise and dust	Daytime, 7 a.m. - 7 p.m	Hoarding will be installed to safely separate construction activities. Vibration, noise and air quality monitoring

Upcoming Works: Seasonal

Date	Activity	Location	Details and Purpose
Fall	Demolition of 28 Overlea Boulevard	Thorncliffe Park Station	28 Overlea Boulevard demolition required to clear area for the elevated guideway and Thorncliffe Park Station construction.
	Site laydown and preparation	Thorncliffe Park Station	<p>Site laydown preparation includes installing trailers, site offices and facilities, access roads and hoarding required to facilitate the construction of Thorncliffe Park Station and the elevated guideway.</p> <p>EGS laydown areas are: 10 Overlea Boulevard, 26 Overlea Boulevard, 28 Overlea Boulevard, and 6 Thorncliffe Park Drive.</p> <p>Installation of slurry tanks at 10 Overlea Boulevard and installation of pipes to pile locations.</p>
	Start elevated guideway construction	Overlea Boulevard	Construction of the elevated guideway, beginning with drilling for the piles that will support the elevated guideway. Once the piles are drilled, rebar and concrete will be installed.
Winter (into 2026)	Tree removals	Overlea Boulevard	Trees and vegetation will be cleared along the north side of Overlea Boulevard from Millwood Drive to 42 Overlea Boulevard (Costco) to create a work area for construction of the elevated guideway and Thorncliffe Park Station construction.

Operations, Maintenance and Storage Facility

OMSF site map



A look at what will be part of the operations, maintenance and storage facility campus

OMSF: Construction Update - Maintenance building foundation work



3,500 COLUMNS DRILLED
FOUNDATION WORK BEGAN IN JUNE,
PROGRESS HAS BEEN STEADY

Retaining wall for Ontario Line track



- More than 114 metres of retaining wall will be cast in place.
- Works to be completed by end of 2025

Action Log

Action Items

#	Questions Asked / Action Item	Response/Resolution	Due Date / Status
1	Metrolinx to organize a walking tour of the West Don Crossing	<ul style="list-style-type: none">Invites have been sent to interested committee members.	Ongoing
2	Metrolinx and city to review suggestion for restricted right-turn at the Thorncliffe Park Drive West and Overlea Boulevard intersection.	<ul style="list-style-type: none">Metrolinx to investigate safety measures for traffic in the area	Ongoing

Metrolinx will keep the community, residents and businesses informed by providing project updates, seeking input and feedback, while addressing questions and concerns effectively and quickly.

Next CLC meeting: Thursday, August 28, 2025

Connect with us:

- Ontario Line at OntarioLine@metrolinx.com

Email: OntarioLine@metrolinx.com

Telephone 24/7 @ 416-202-5100

Follow us on social media:

Twitter / Facebook / Instagram: @OntarioLine

Visit Us:

East York Town Centre
45 Overlea Blvd., Toronto, ON M4H 1C3
Unit 153 (across from the Rogers store)
Monday to Friday: 9 a.m. to 5 p.m.



*Scan here to sign up for
the new and improved
Ontario Line
e-newsletter*



*Scan here to explore
Ontario Line CLC
materials*