

Ontario Line

Queen-Spadina Construction Liaison Committee

August 5, 2025



Agenda

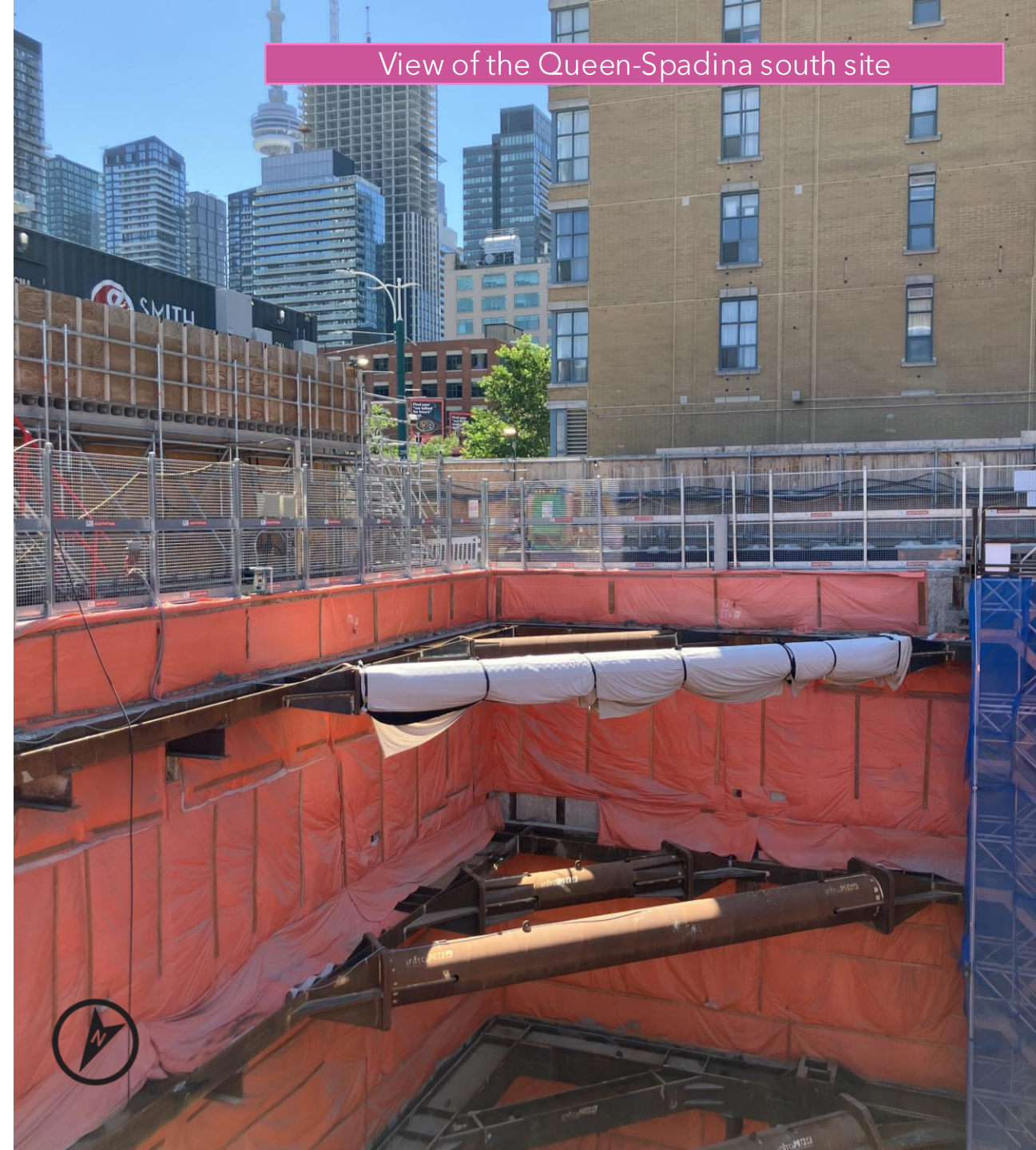
Welcome (5 min)

- Introductions
- Land Acknowledgment
- Safety Moment
- Session Guidelines
- Action / Item

Presentation (30 min)

- Construction Updates

Q/A and discussion (25 min)



LAND ACKNOWLEDGEMENT

Metrolinx acknowledges that we connect communities by building and operating transit within the traditional lands of the Anishinaabe, the Haudenosaunee and the Huron-Wendat peoples, for whom these lands continue to have great importance.

Treaties between First Nations and governments cover these lands, and the promises contained in these Treaties remain relevant to this day.

Metrolinx and its employees are committed to understanding the history of these lands and the continued impacts of colonization and take responsibility for actions to advance reconciliation.

Metrolinx will continue to seek the knowledge, expertise and experience of Indigenous partners and commits to doing business in a manner that is built on a foundation of trust, respect, and collaboration.

Session Guidelines

We greatly appreciate the community members who are here to take part in this public session.

To ensure that everyone can contribute to a positive and safe community experience, all participants shall adhere to the following *Code of Conduct*:

- Treat the presenters and participants with respect and understanding
- Acknowledge and appreciate the diversity of individuals and their situations
- Refrain from supporting or engaging in any form of discriminatory behaviour

Metrolinx is committed to fostering a safe and respectful environment.

We encourage respectful and constructive communication.

JULY CLC ACTION ITEMS

	ACTION ITEM	RESPONSE	STATUS
1	OTG to review condition of noise blankets on machinery	OTG has reviewed the condition and replaced the noise blankets where needed.	Completed
2	Crime Prevention Through Environmental Design (CPTED) site tour	<p>A CPTED site tour was conducted in early July. Metrolinx is reviewing the feedback with OTG; some immediate actions:</p> <ul style="list-style-type: none">• Additional lighting planned near Graffiti Alley• Secured utility access point on Queen Street West (at north site)• Adjusted cones, vehicles, or equipment near the northeast corner of Queen Street West and Spadina Avenue• Clear “NO STOPPING/PARKING” signage to be added	Ongoing

FREQUENTLY ASKED QUESTIONS:

	TOPIC	RESPONSE
1	Hours of work	<ul style="list-style-type: none">North site: 24-hour shifts (Monday – Saturday), with occasional Sunday work as needed.South site: 7:00 a.m. to 11:00 p.m., Monday through Friday, with occasional weekends. Work hours may be adjusted in consideration of the particular work underway and construction sequence.<ul style="list-style-type: none">During this current phase of work, crews are expected to work from 7:00 a.m. to 11:00 p.m. during weekdays (Monday through Friday).Crews may work on Saturdays and Sundays from 7:00 a.m. to 7:00 p.m. during the weekend.
2	Current phase of works	Shaft excavation started later than originally scheduled because the previous structural phase took longer than anticipated. This stage of shaft excavation is expected to continue until the end of August, along with the excavation of footings and the pentabeam, which involves breaking concrete and rock. Once excavation is complete, the structural phase will begin in early September, which will include the installation of steel elements such as walers and struts.
3	Lifting Alarm	The alarm is not new and has been in place for almost a year now. It is used for lifting operations, to ensure the safety of works --- the alarm helps to ensure everyone is aware lifting is in progress. Previously mentioned in May CLC.
4	Noise, measurement + decibel levels	Noise is monitored at designated receptors located near the site. Alerts notify the team if noise reaches a specified level, as directed by Metrolinx to our contractors. These levels follow industry best practices and standards. When alerts happen, the team makes adjustments.
5	Mitigations in place	To reduce impacts to residents and businesses in the area, mitigations are in place including air quality, noise, and vibration monitoring, site hoarding, additional paved areas, sprinkler systems, and mud mats for dust suppression. At the South site, additional mitigations have been added during rock breaking excavation.
6	Completion dates – excavation	<ul style="list-style-type: none">North site: Excavation and cavern work is expected to be complete in early 2026.South site: Excavation is expected to be complete by the end of 2025. Additional phases of station construction will follow.

SAFETY MOMENT - SUN SAFETY

As we head into peak summer heat, it's important to keep sun safety in mind. The sun's rays can be harmful if we're not careful. Here are some safety tips to ensure we are staying safe in the sun:

Wear sunscreen

- Apply sunscreen with SPF 30 or higher, at least 15 minutes before going outside, and reapply every two hours or after swimming or sweating.

Seek shade

- Try to stay in the shade, especially during the sun's peak hours between 10:00 a.m. and 4:00 p.m.

Wear protective clothing

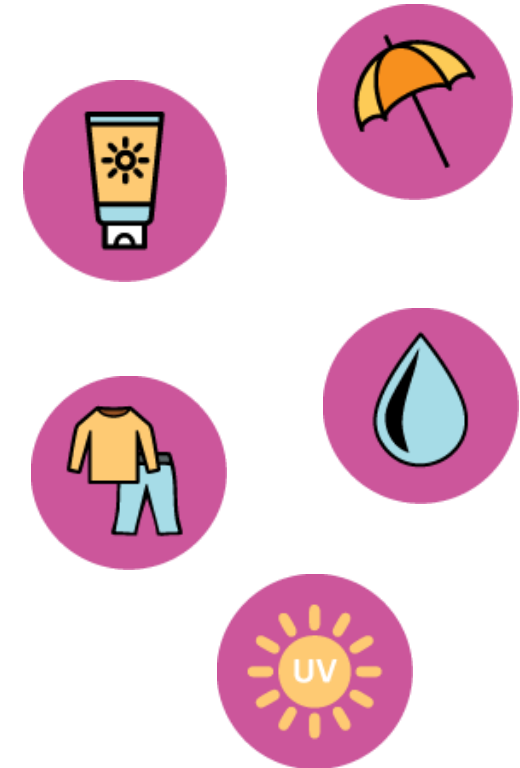
- Wear lightweight, long-sleeved shirts, pants, sunglasses and wide brimmed hats to protect your skin and eyes from the sun.

Stay hydrated

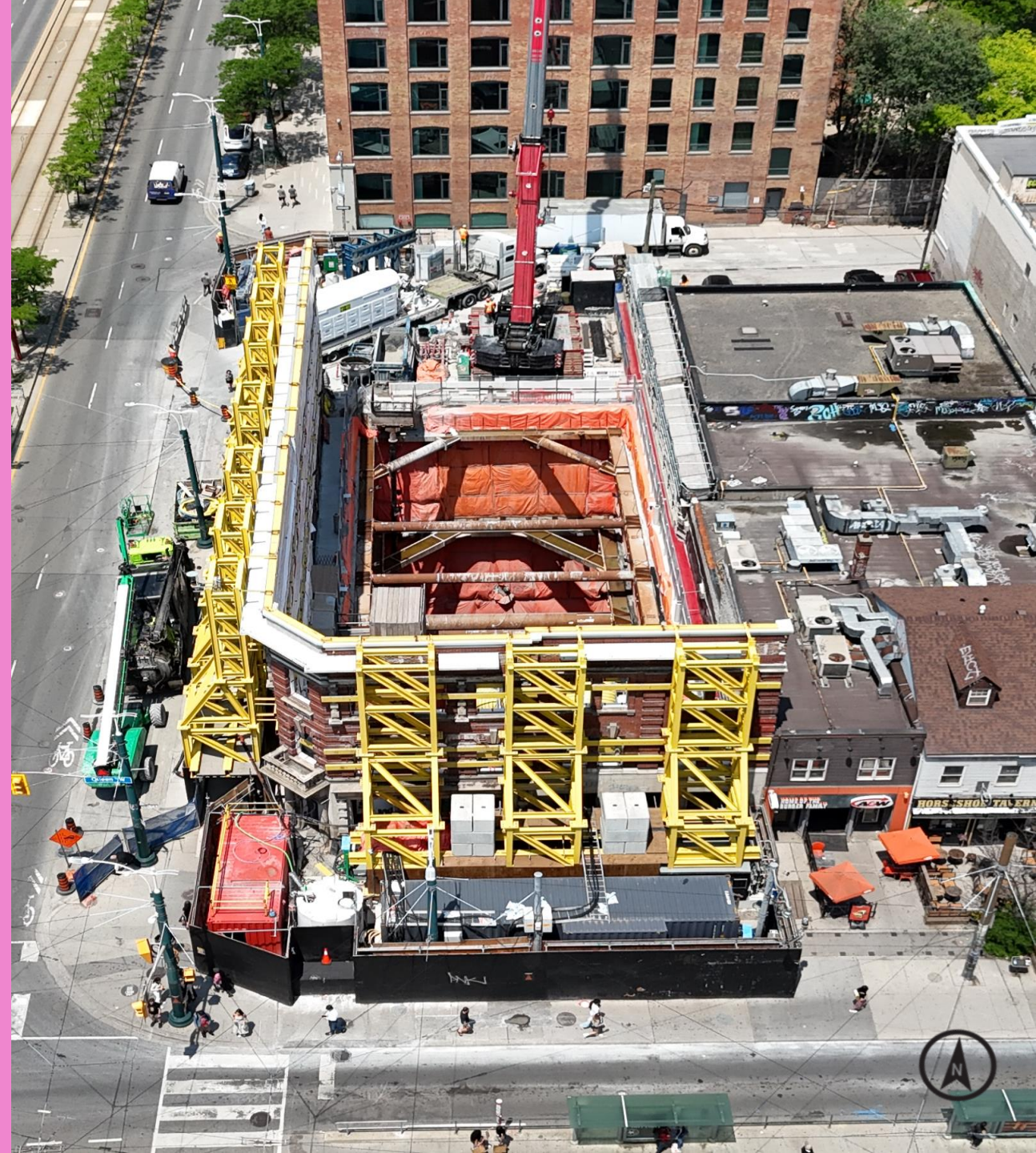
- Drink plenty of water throughout the day, especially when spending time outdoors in the sun.

Check the UV index

- Be aware of the UV index in your area and take precautions when it's high.



Queen-Spadina Construction Update



A VIEW INSIDE THE CAVERN AT THE QUEEN-SPADINA STATION SITE



**VIEW FROM THE ENTRANCE OF CAVERN AT THE
QUEEN-SPADINA NORTH SITE**



**VIEW FROM INSIDE THE CAVERN AT THE QUEEN-
SPADINA NORTH SITE**



CURRENT WORKS: QUEEN-SPADINA NORTH SITE

- The excavation of the cavern is underway. This cavern will connect the North and South station entrances to the tunnel and will house the future station platform.
- In addition to excavating rock, shotcrete and rock bolts are being installed for support.
- The cavern excavation and temporary support works follow a 24-hours a day work shift, 7 days a week.
- Expected completion of the cavern excavation is early 2026.

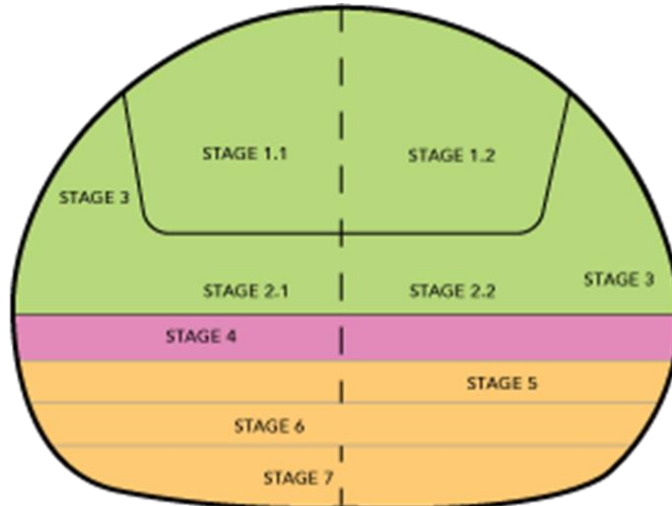


Machinery in the cavern at the Queen-Spadina station north site.

CURRENT WORKS: QUEEN-SPADINA NORTH SITE

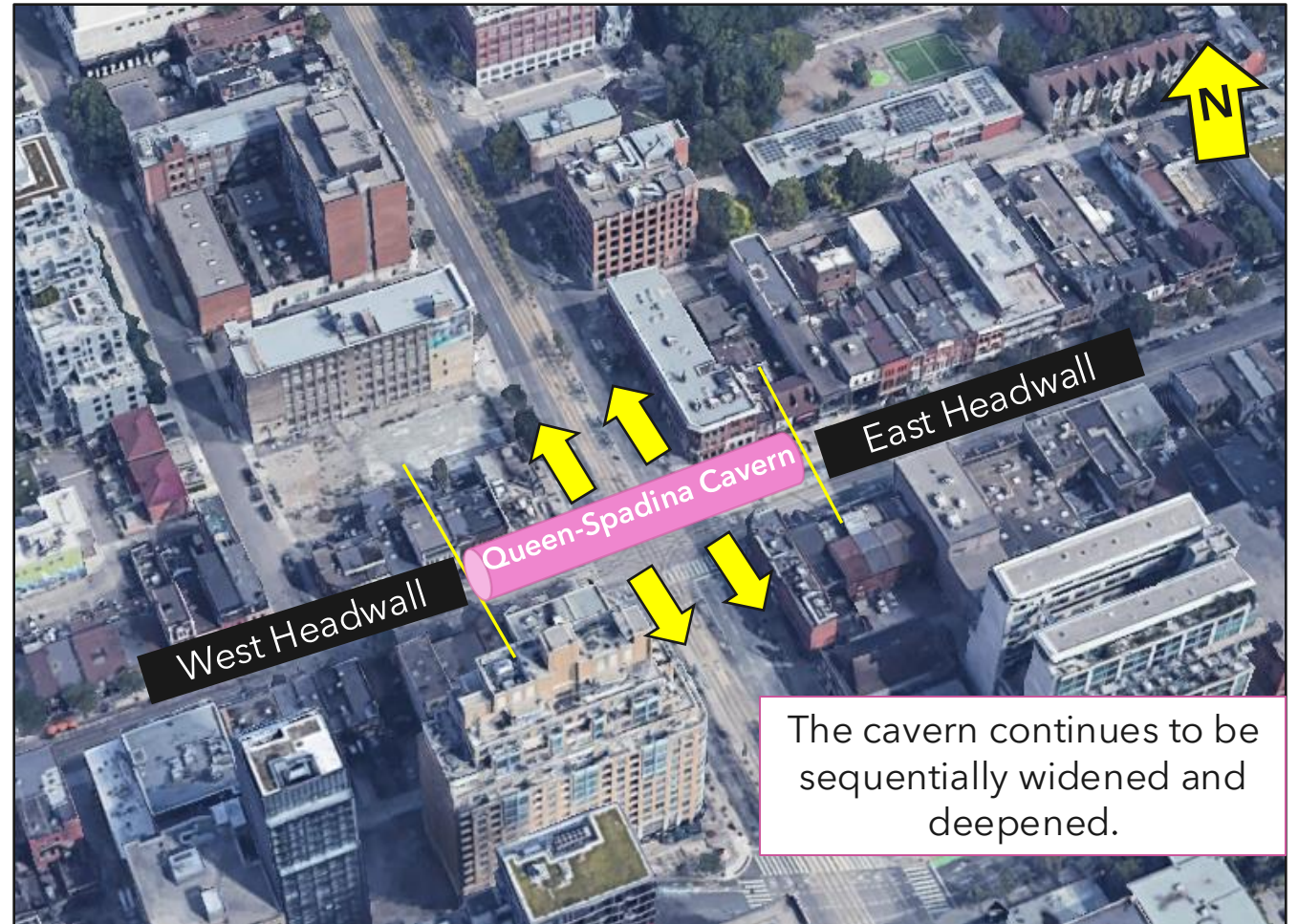
The headwalls represent the “bookends” of the cavern process; from west & east limits.

- Crews continue to **widen and deepen the cavern**, to accommodate the full width and depth needed for tunnel boring machines, as well as the future station platform and tracks.



As of August 2025

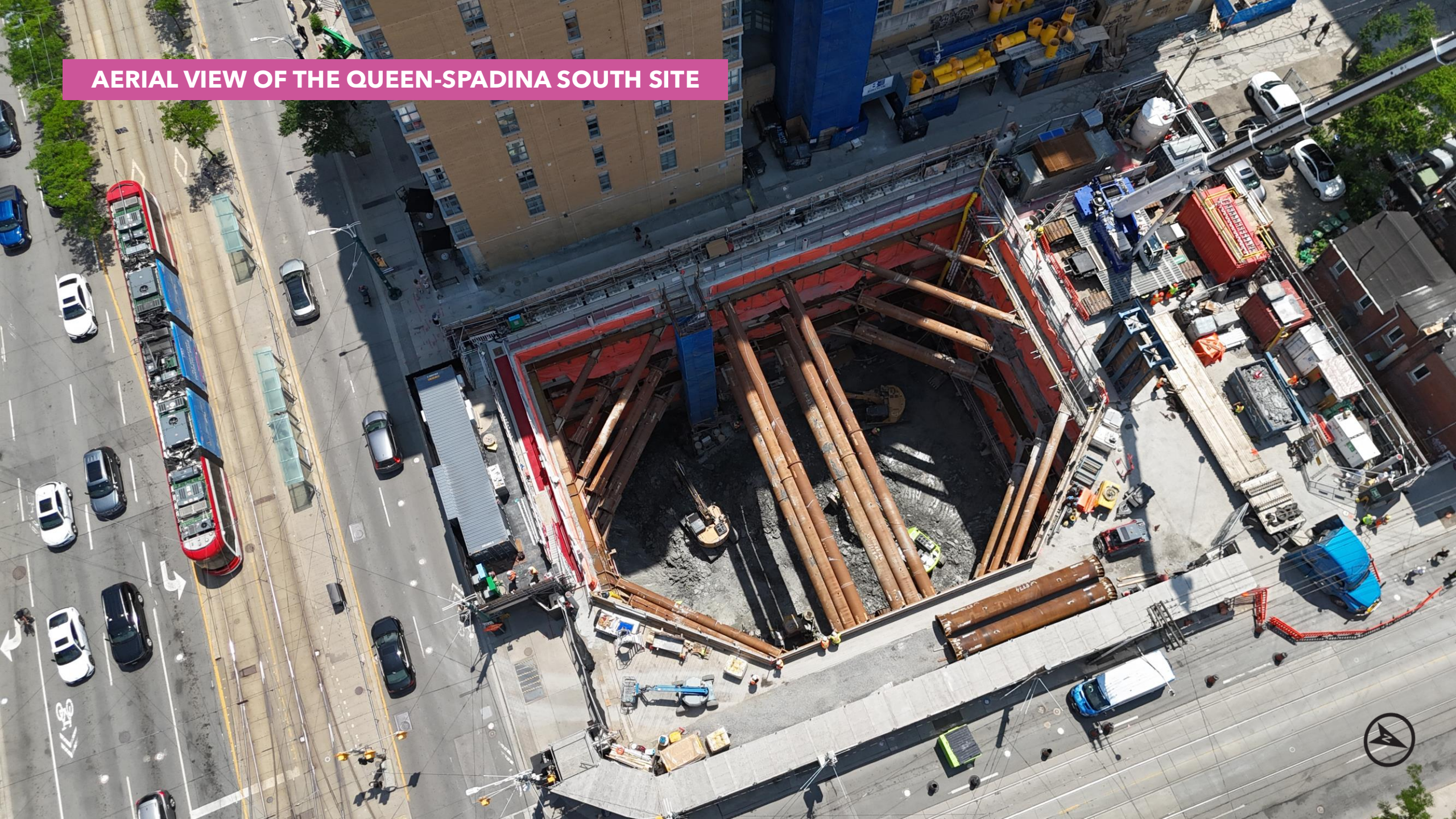
- Green** = completed excavation
- Pink** = next stage of excavation
- Orange** = final stages



The cavern continues to be sequentially widened and deepened.

Looking from above towards the north, the arrow depicts the approximate location and progress of the Queen-Spadina cavern work to date, in relation to the neighbourhood.

AERIAL VIEW OF THE QUEEN-SPADINA SOUTH SITE





VIEW INSIDE THE QUEEN-SPADINA SOUTH SITE



CURRENT WORKS: QUEEN-SPADINA SOUTH SITE

- Rock excavation is underway; the current level of rock breaking phase is expected to be complete by the end of August 2025.
- Crews are also advancing works to prepare for installation of a pentabeam structure to connect the station shaft and cavern. This work is expected to take approximately five to six weeks (early September).
- Hours of work are 7:00 a.m. to 11:00 p.m., Monday to Saturday, with occasional Sunday shifts. Works hours may be adjusted.



Excavation in progress at the Queen-Spadina south station site

UPCOMING WORK: CONNECTING THE SOUTH SHAFT AND CAVERN

To connect the station shaft and cavern crews will install a pentabeam structure for support. In the future, passengers will pass through this area to access the Ontario Line platforms.

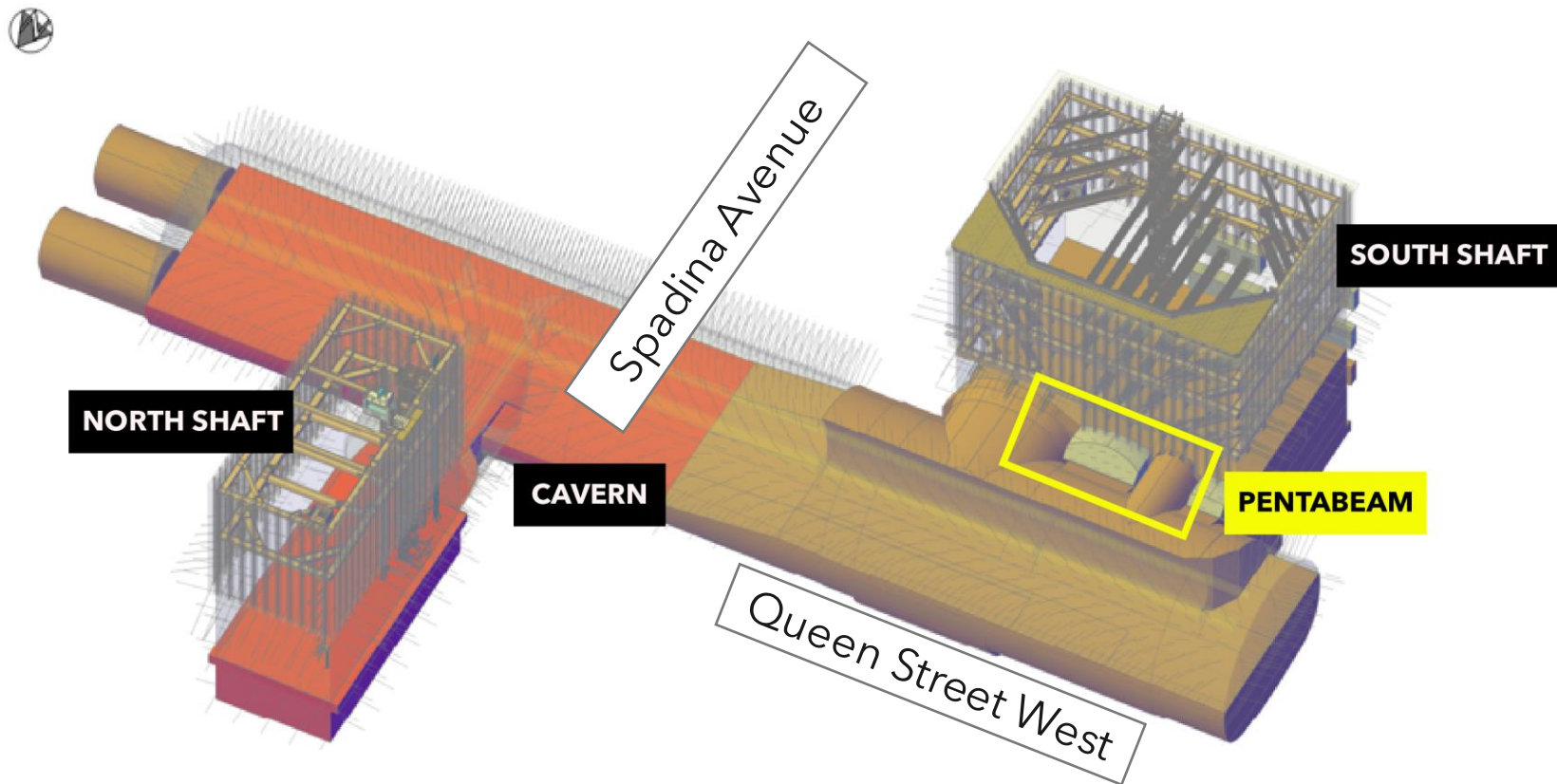


Diagram of the Queen-Spadina south station design



**VIEW AT QUEEN-SPADINA SOUTH SITE
PREPARATION WORKS UNDERWAY FOR
THE PENTABEAM INSTALLATION**

Upcoming Work

QUEEN-SPADINA EIGHT WEEK LOOKAHEAD: AUGUST - SEPTEMBER 2025

#	Activity	Location	Expected Start	Expected Duration	Impact	Hours of Work	Mitigations
1	Rock Excavation (includes rock bolts and shotcrete)	North site	Ongoing	Entire lookahead period	Noise	Monday to Sunday 24 hours	Hoarding as noise mitigation. Dust mitigation includes misting, sweeping. Erosion and sediment control.
2	Adit Excavation (entrance passage to the horizontal cavern)	North site	Ongoing	Entire lookahead period	Vibration, air quality, noise	Monday to Sunday 24 hours	Hoarding as noise mitigation. Dust mitigation includes misting, sweeping. Erosion and sediment control.
3	Cavern Excavation	North site	Ongoing	Entire lookahead period	Vibration, noise, air quality	Monday to Sunday 24 hours	Hoarding as noise mitigation. Dust mitigation includes misting, sweeping. Erosion and sediment control.
4	Rock Excavation (includes rock bolts and shotcrete)	South site	Ongoing	End of August	Noise, air quality	Monday to Friday* 7:00 a.m. to 11:00 p.m. *Occasional weekends.	Hoarding as noise mitigation, noise blankets around excavation attachments, use of ripper whenever possible, use of broadband alarms for equipment on site, monitoring to ensure 7:00 a.m. start.
5	Pentagonal Beam from South Shaft	South site	Late July	Early September	Noise, air quality	Monday to Saturday with occasional Sundays 7:00 a.m. to 11:00 p.m.	Hoarding as noise mitigation, noise blankets around excavation attachments, use of ripper whenever possible, use of broadband alarms for equipment on site, monitoring to ensure 7:00 a.m. start.
6	Installing Walers and Struts	South site	Early September	October	Vibration, noise	Monday to Saturday with occasional Sundays 7:00 a.m. to 11:00 p.m.	Hoarding as noise mitigation. Use of broadband alarms for equipment on site, monitoring to ensure 7:00 a.m. start.

2025 CONSTRUCTION LOOK-AHEAD

Timing	Activity	Location	Details and Purpose
Summer	Ontario Line signage installation	North & south sites	Additional Ontario Line signage expected to be installed at the north and south sites.
Summer/Fall	Ongoing Excavation	South site - within the site and along designated haul routes	Removing large volumes material from the station shaft to build a new subway cavern and tunnel underground. Dump trucks and various excavators will be used to complete this work.
Fall/Winter	Excavation Cavern work + waterproofing and permanent lining concrete works	North site - within the site and along designated haul routes.	Removing large volumes material from the station shaft to build a new subway cavern and tunnel underground. Dump trucks and various excavators will be used to complete this work.

*Note: All dates and times are subject to change as construction planning progresses

Discussion

KEEPING YOU INFORMED

Metrolinx will keep the community, residents and businesses informed by providing project updates, seeking input and feedback, while addressing questions and concerns effectively and quickly.

Next CLC meeting: Our next meeting is expected to take place September 2, 2025.

Connect with us:

- Libaan Geedi, Community Engagement Advisor
- Ross Andersen, Senior Advisor, Community Engagement

Email: OntarioLine@metrolinx.com

Telephone 24/7 @ 416-202-5100

Follow us on social media:

Twitter / Facebook / Instagram: @OntarioLine



*Scan here to sign up
for the Ontario Line
e-newsletter*



*Scan here to explore
Ontario Line CLC
documents*

