

LAND ACKNOWLEDGEMENT

Metrolinx acknowledges that we connect communities by building and operating transit within the traditional lands of the Anishinaabe, the Haudenosaunee and the Huron-Wendat peoples, for whom these lands continue to have great importance.

Treaties between First Nations and governments cover these lands, and the promises contained in these Treaties remain relevant to this day.

Metrolinx and its employees are committed to understanding the history of these lands and the continued impacts of colonization and take responsibility for actions to advance reconciliation.

Metrolinx will continue to seek the knowledge, expertise and experience of Indigenous partners and commits to doing business in a manner that is built on a foundation of trust, respect, and collaboration.



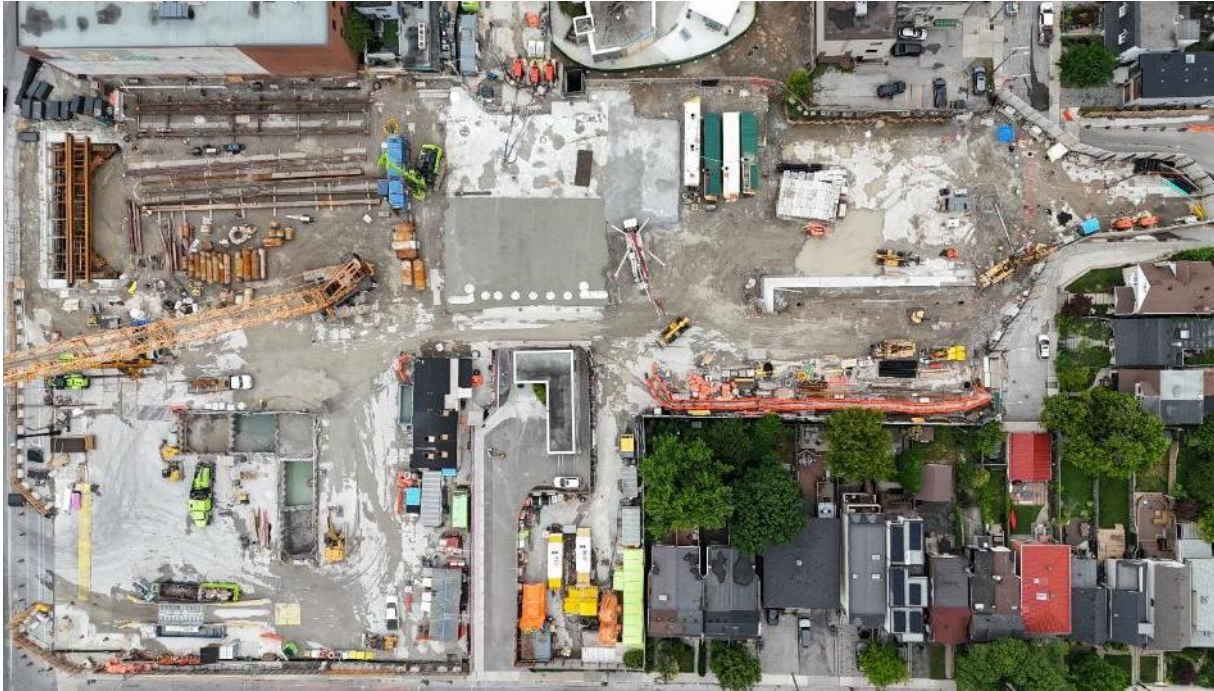
Pape-Danforth & Sammon CLC

Site Walk

August 6, 2025

Pape-Danforth Site Changes

June 27th:



July 28th:



Notable changes include:

- **Traffic shift** on Danforth Ave. Westbound lane and bike lane shifted north onto traffic decking to minimize traffic interruptions.

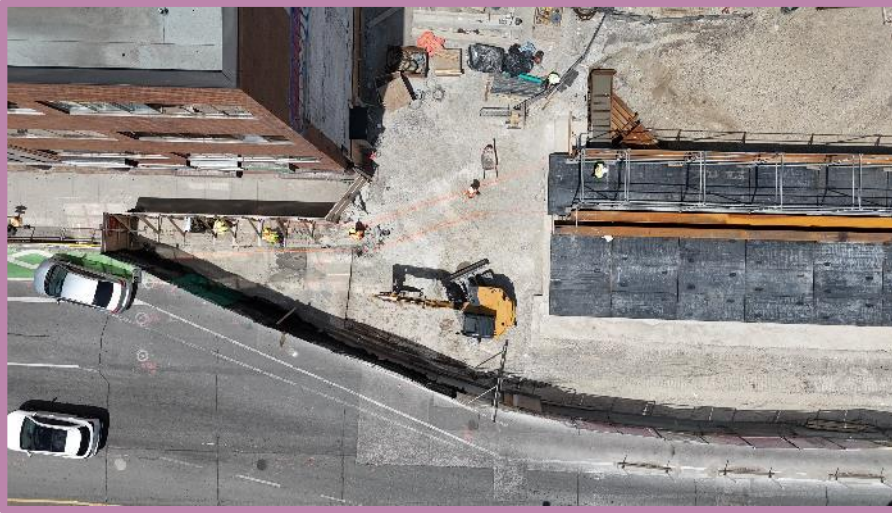


Overhead view of traffic decking

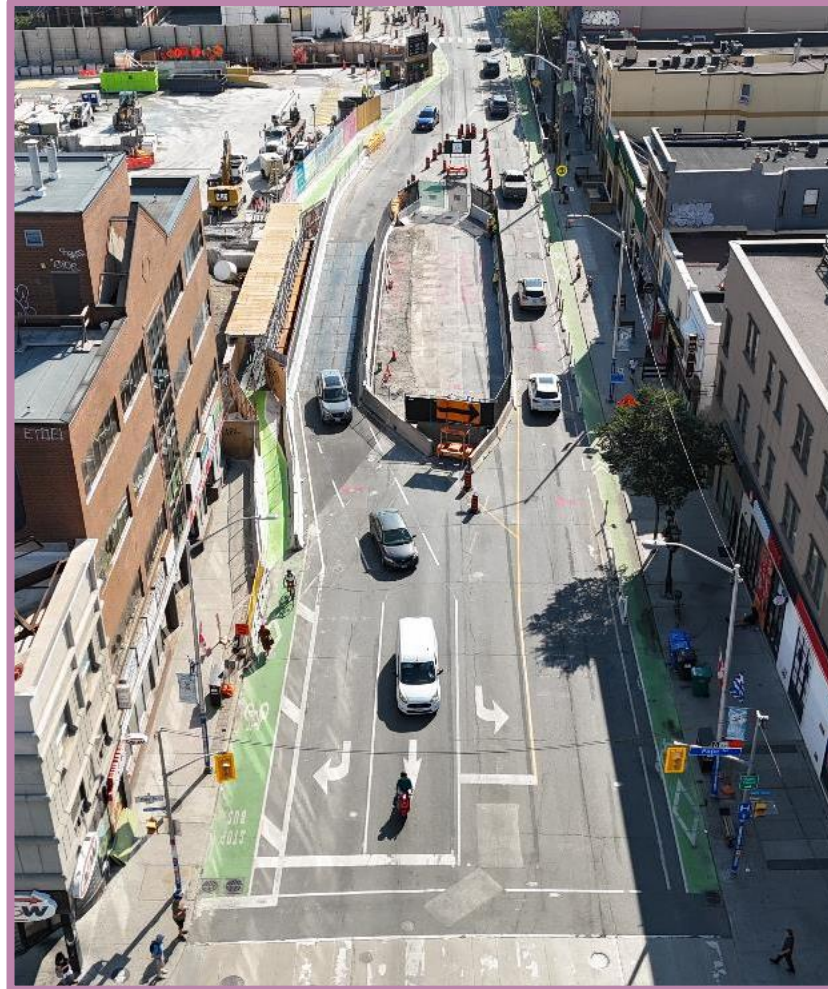


Covered bike lane overtop bridge decking, including overhead protection, in preparation for traffic shift

Traffic Switch on Danforth (cont.)



Bike lane markers were added, and the lane was paved on the West and East side of the traffic decking

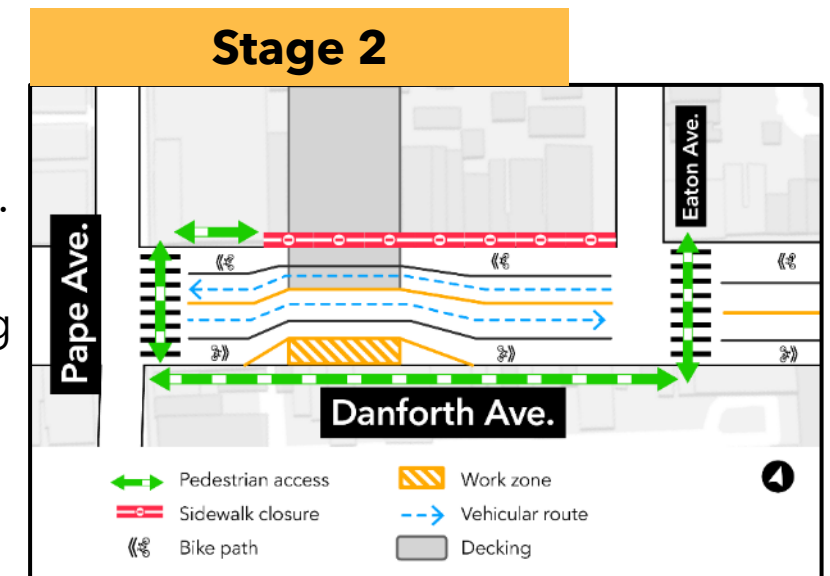
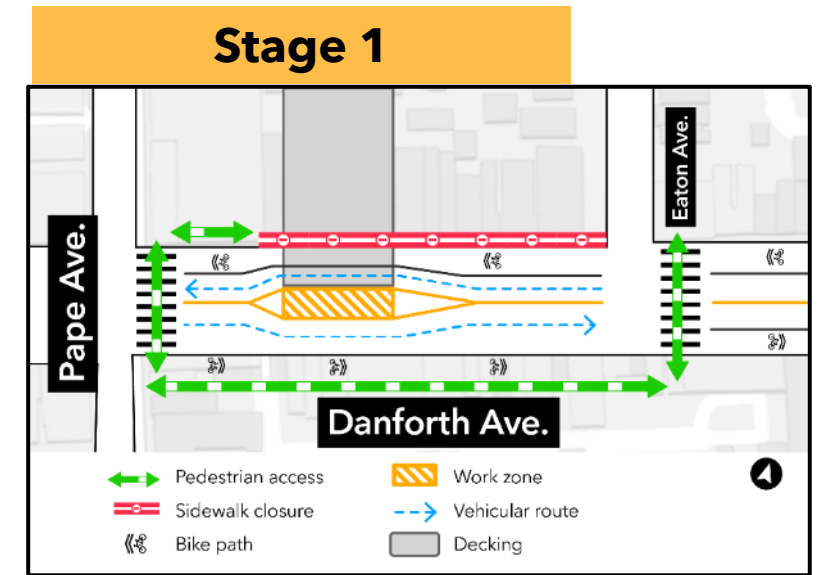


Asphalt new west bound lane, line painting and arrange traffic control barrier for new traffic control setup



Danforth Jet Grouting

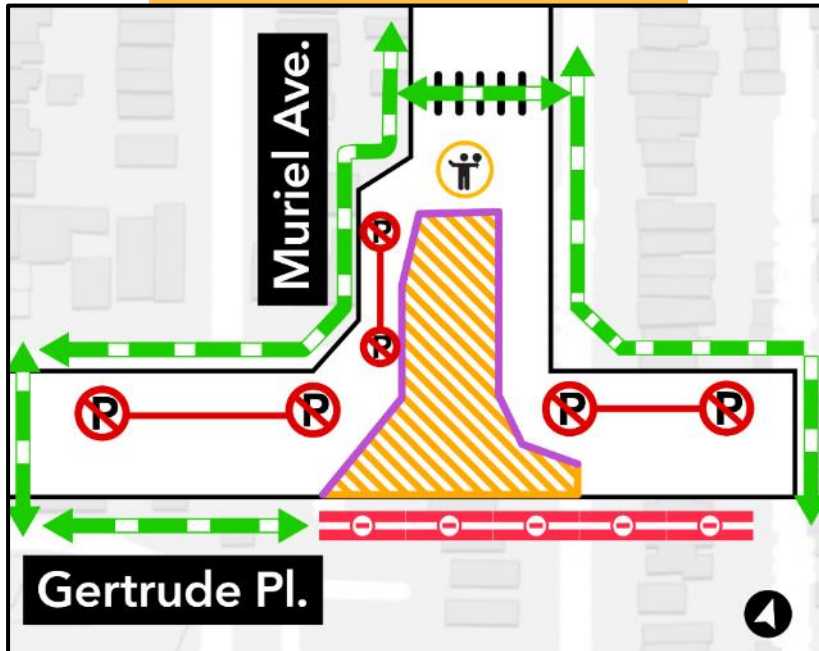
- Jet grouting work will begin on Danforth Avenue in late July.
- Work will begin with utility exposure and protection, followed by jet grouting.
- Work will take approximately 8 months:
 - Stage 1 will take place from July 2025 to December 2025.
 - Stage 2 will take place from December 2025 to January 2026.
- All work will take place Monday-Saturday from 6 a.m. to 7 p.m.
- During works, the sidewalk on the north side of Danforth will remain closed. Traffic and bike lanes will be diverted to accommodate the work zones but will remain open. The sidewalk on the south side of Danforth will remain open during both stages.
- Pedestrians are reminded to follow traffic signage and cross to the south side of Danforth to access the open sidewalk when travelling past the construction site.



Gertrude Jet Grouting Stages

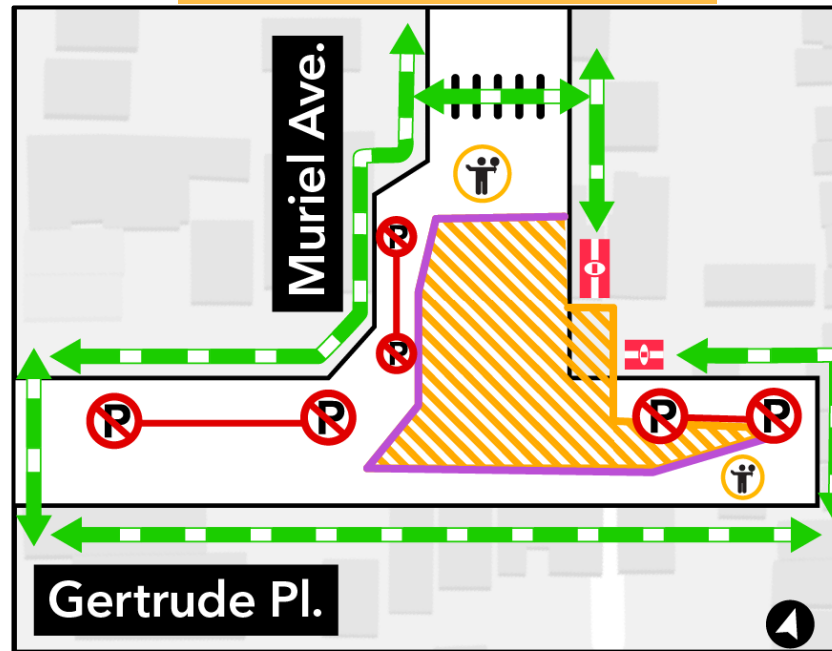
Stage 1

Ongoing until
September 2025*



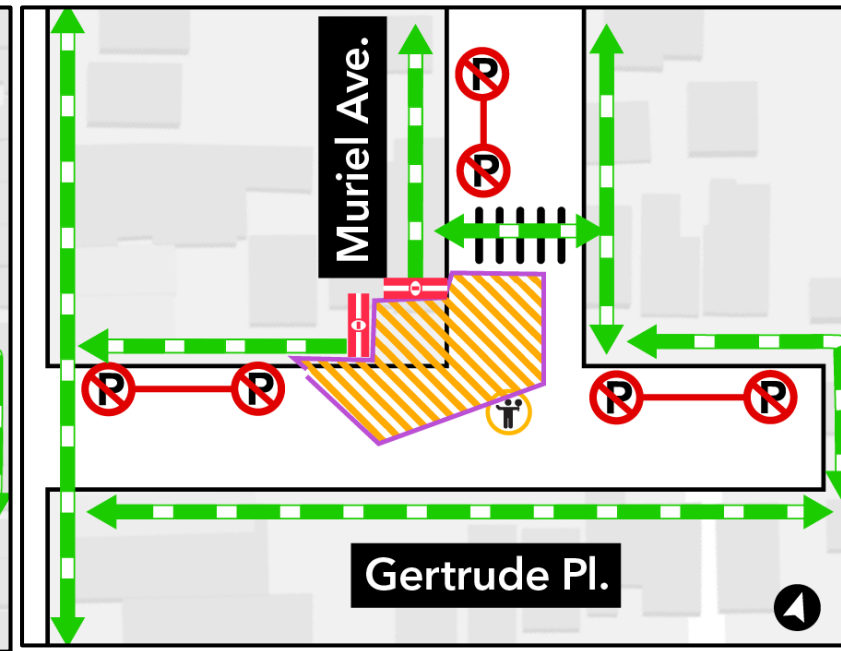
Stage 2

September 2025 -
May 2026



Stage 3

May 2026 - June 2026



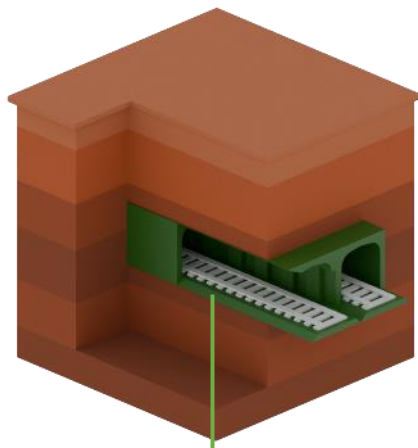
**All work Monday - Saturday
Day shift only**

- Pedestrian access
- Sidewalk closure
- Traffic Control
- Work zone
- Restricted parking
- Noise barrier

*Pending completion of emergency sewer works. All timelines are tentative. Hydrovacating will not start until 9am on Saturday. All other works will begin at 6am on Saturday.

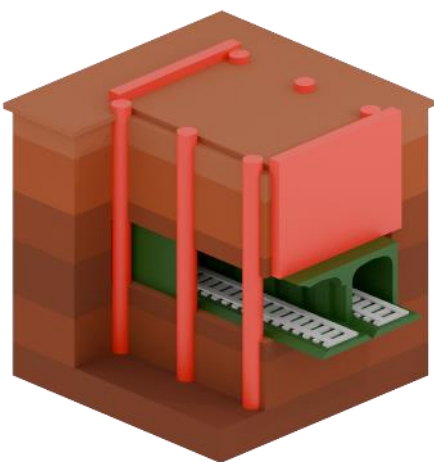
TTC Box Underpinning

Existing conditions

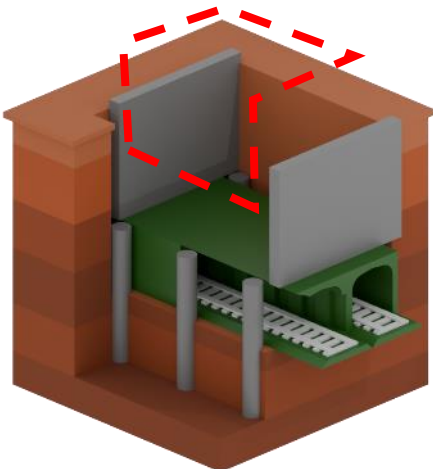


Existing TTC
Line 2 tunnel

Stage 1: Exposing the TTC box

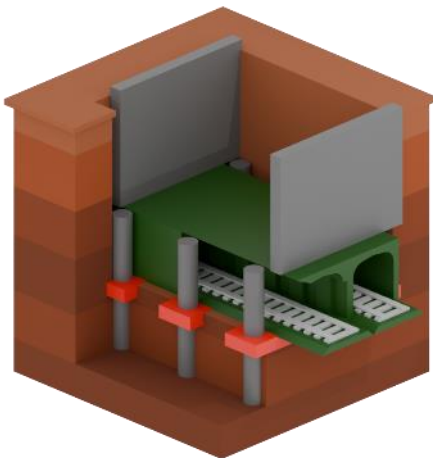


Install soldier piles, deep secant
wall, TTC support caissons

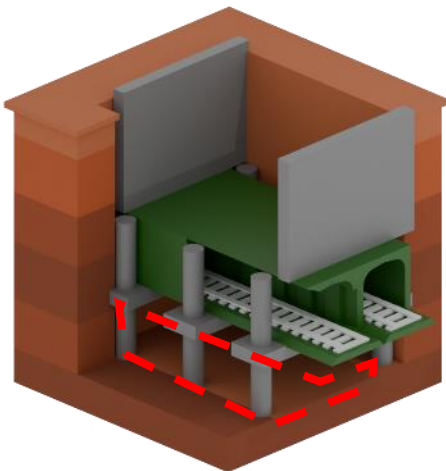


Excavate above
Line 2

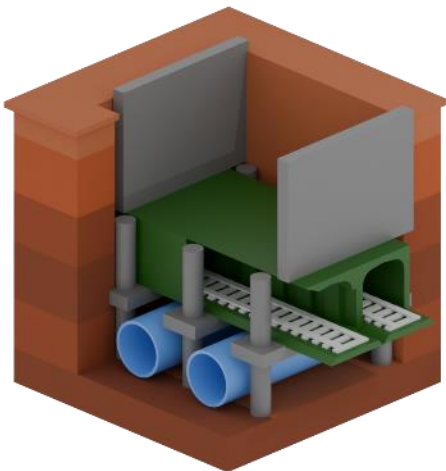
Stage 2: Underpin Line 2



Stage 3: Excavate beneath Line 2



Future: Ontario Line beneath Line 2



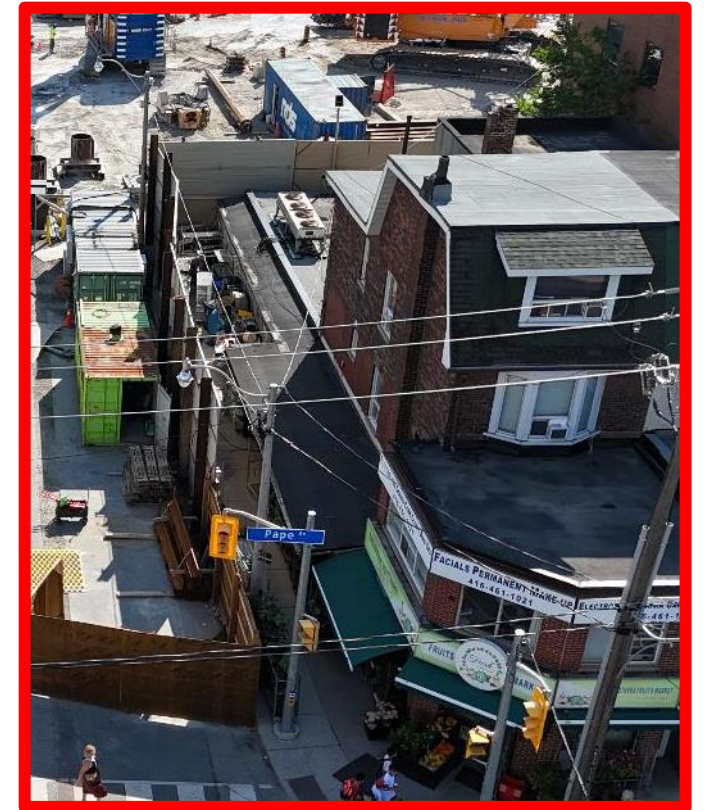
Pape Station - Upcoming Works

#	Activity	Location	Expected Start	Expected Duration	Impact	Hours of Work	Mitigations
1	Traffic Decking Installation	Danforth	March 2025	Completed	Noise	Monday - Friday: 24 hrs Saturday: 6am-7pm	N/A
2	Piling for Stage 1*	Lipton	June 2025	September 2025	Noise	Monday - Saturday: 7am - 11pm	Noise wall
3	Jet Grouting	Gertrude	June 2025	June 2026	Noise	Monday - Friday: 7am-7pm**	Noise wall
4	Jet Grouting	Danforth	July 2025	January 2026	Noise	Monday - Friday: 7am-7pm**	Noise wall
5	Traffic Decking Installation	Gertrude	August 2025	October 2025	Noise	Monday - Friday: 7am-7pm	Noise wall
6	Shaft Excavation (to Level 3)	Pape	October 2025	June 2026	Noise	Monday - Friday: 24 hrs Saturday: 6am-7pm	Noise wall

*Stage 1 refers to the new work presented on slide 7 ("Upcoming Works")

**On Saturdays, maintenance (including hydrovacing) will be done for jet grouting works at the Gertrude location. Hydrovacing will not start until 9am on Saturday. All other works will proceed as normal from 6am-7pm on Saturdays. Jet grouting works include hauling.

Additional sound walls added at the Pape site



Registered Exceedances at Noise Receptors: July 2025

No	Day/Time of Exceedances	Detail	Location	Source	Corrective Action	Complaint Received (Y/N)
1	Thursday, July 3 rd - early morning	Noise	Eaton	Machinery creak	Additional noise walls has been installed.	N
2	Friday, July 4 th - early morning	Noise	Gertrude Pl	Reverse Alarm	The reverse alarm has been changed to broadband backup alarm.	N
3	Thursday, July 24 th - morning	Noise	Danforth Ave	Reverse Alarm and Machinery creak	The reverse alarm has been changed to broadband backup alarm. Additional noise walls has been installed.	N