

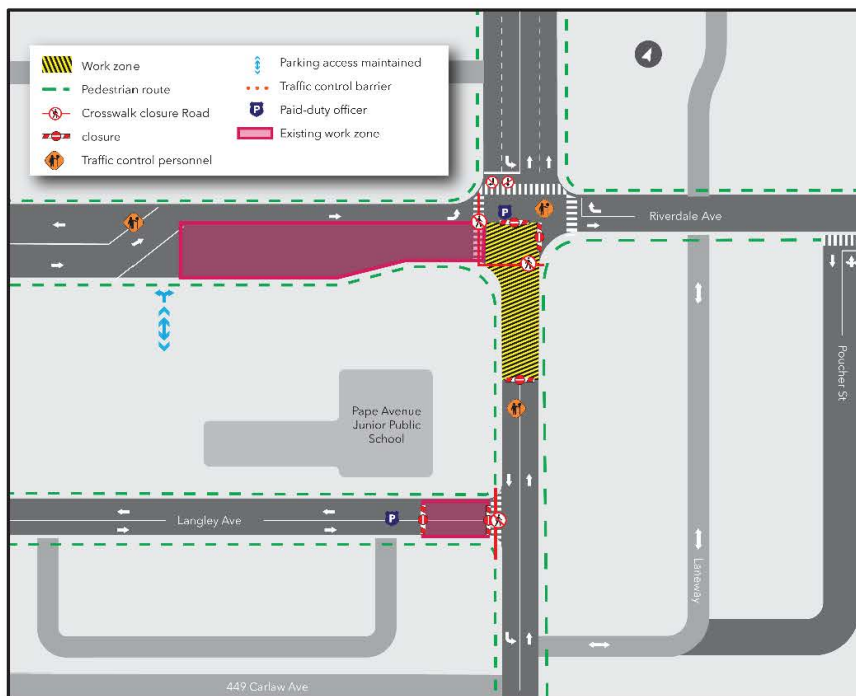
Pape-Riverdale Road Closures for Combined Sewer Manhole Installation

Expected Start Date: As early as mid-August (see [“What to Expect”](#) for more info)

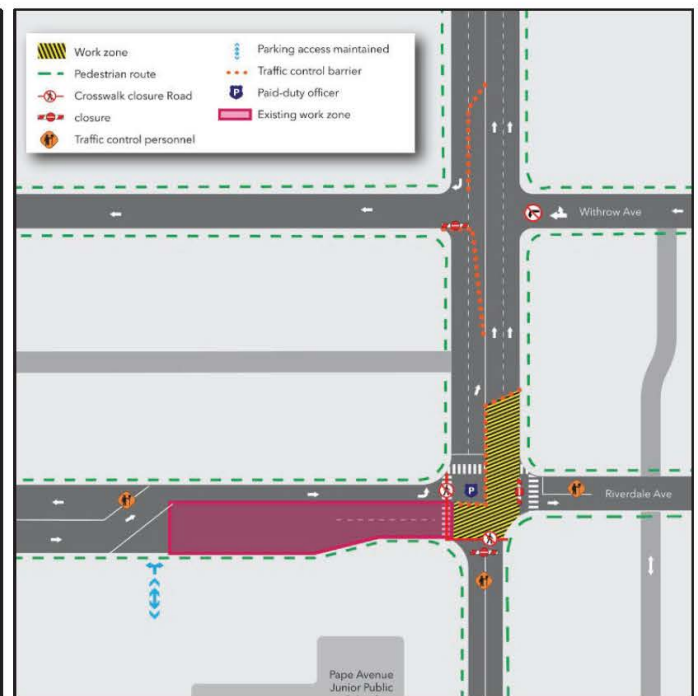
Expected Duration: Phase 1: Three days (Weekdays)

Phase 2: Three days (Friday to Sunday)

Hours of work: Weekdays 7 a.m. to 7 p.m., Weekends 7 a.m. to 7 p.m.



Phase 1



Phase 2

What is Happening?

- As part of utility relocations needed to clear the way for future Ontario Line subway tunnelling operations, crews will be installing maintenance hole diversions for the new combined sewer.
- This work will take place under Pape Avenue in the vicinity of the Pape & Riverdale intersection and will necessitate additional road closures (see graphics and “What to expect” below).
- Phase 2 works will take place over a weekend to minimize traffic impacts to the surrounding community.

What to expect

- Crews will excavate within the work zones to install infrastructure for the combined sewer maintenance hole diversion.
- Work will take place from 7 a.m. to 7 p.m. on weekdays, and 7 a.m. to 7 p.m. on weekends.

- Both phases will take three days to complete and will be undertaken sequentially.
- **Timing for the start of this work is still to be determined. A separate notice will be posted digitally on Metrolinx.com/OntarioLineConstruction and canvassed locally 1 week prior to the confirmed start date.**
- Residents and businesses in the area may hear noise caused by work equipment, including an excavator, hydrovac, and mobile crane.
- Noise, vibration, and air quality monitoring will occur 24/7 during the work to monitor for exceedances. Exceedances will result in adjustments to work and/or mitigations.
- Work may be delayed due to weather conditions or unforeseen circumstances.
- Traffic restrictions and closures from ongoing phases of work related to storm sewer microtunnelling on Riverdale Avenue and Langley Avenue will remain in-place during this work.
- Crews will return to the area to conduct further combined sewer installations in the fall of this year, following the conclusion of storm sewer microtunnelling work (currently ongoing). A separate notice will be distributed prior to the start of that work.

Traffic and Pedestrian Details

- Phase 1:
 - Pape Avenue will be fully closed south of Riverdale Avenue up to approximately halfway to Langley Avenue.
 - The southern east-west crosswalk at the Pape & Riverdale intersection will be closed, in addition to the current western north-south crosswalk closure. All sidewalks will remain open.
- Phase 2:
 - Pape Avenue south of Withrow Avenue will be closed to southbound traffic.
 - The Pape & Riverdale intersection will be closed to all traffic except eastbound traffic on Riverdale. The only route available will be northbound on Pape.
 - 72 Pape bus route will not be impacted.
 - The northern east-west crosswalk at the Pape & Riverdale intersection will be closed, in addition to the existing western north-south crosswalk closure. All sidewalks will remain open.
- Paid-duty officers and traffic control personnel will be on site to facilitate traffic movement.
- During weekday work, pick-up and drop-off for Pape Children's House will be facilitated on Langley Avenue. As Langley is closed at Riverdale Avenue, a paid-duty officer and traffic controllers will be available to assist with turnaround maneuvers.
- Deliveries and other services to houses on Pape Avenue south of Riverdale Avenue will be able to access the street from the east via Poucher Street and park on Pape Avenue south of the closure area.

Contact us:

Call us 24/7 at: **416-202-5100**

Write to us at:

ontarioline@metrolinx.com

Find us on Twitter, Facebook, and

Instagram: **[@ontarioline](https://www.instagram.com/ontarioline)**

Visit our website:

www.metrolinx.com/ontarioline

Visit our community offices:

770 Queen Street East (near Queen & Broadview)

General hours:

Mondays, Tuesdays, and Fridays: 9 a.m. to 5 p.m.

Wednesdays and Thursdays: 10 a.m. to 6 p.m.

Thorndcliffe Park:

East York Town Centre
45 Overlea Blvd., Toronto, ON M4H 1C3
Unit 153 (across from the Rogers store)

General hours:

Monday to Friday, 9 a.m. to 5 p.m.