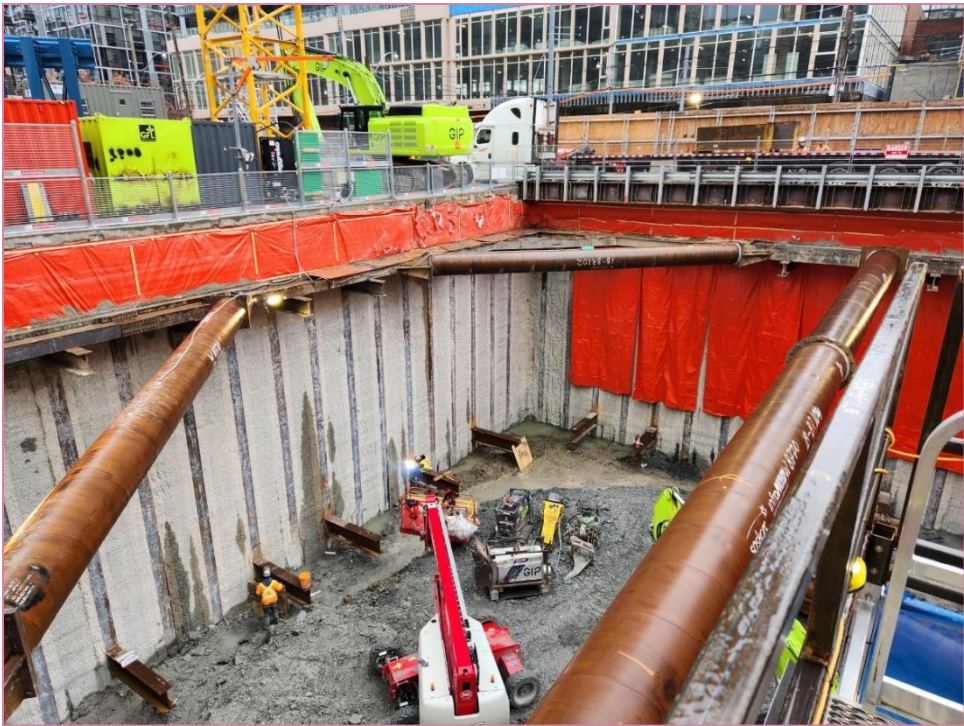


UPDATED: Overnight work at the King-Bathurst south station site

Expected start date: As early as, Monday, August 11, 2025
Duration: Up to 2 (two) nights
Hours of work: Monday through Wednesday, from 11:00 P.M. to 7:00 A.M.

What is station excavation?

Work crews are advancing excavation at the King-Bathurst south site, removing soil and bedrock to a depth of 25 metres below the surface to create the future Ontario Line station site. This two-day operation is critical to the sequence of work for the next lifts of excavation, struts, and walers.



- Work hours for this specific operation are in place to enable this phase of construction, with crews working from 11:00 p.m. to 7:00 a.m., for up to 2 (two) nights.
- Residents can expect to see and hear a roadheader, which is used for smoother and quieter excavation.

Left: Structural supports (struts and walers) being installed in the excavated shaft at King-Bathurst south station site.

What to expect

- Excavated materials will be hauled using a small excavator and dumper from the cavern.
- There will be lighting in place to support overnight work. Lighting will remain on overnight for safety and security at the site and will be angled down, avoiding nearby residential buildings.
- To reduce impacts to residents and businesses in the area, mitigations are in place, including air quality, noise and vibration monitoring, site hoarding, additional paved areas, sprinkler systems and mud mats for dust suppression.
- Crews will minimize noise wherever possible, no surface level work is planned during this overnight time period.
- For more information about upcoming station work, please visit metrolinx.com/ontarioline or sign up for our e-newsletter.
- Learn more about the measures we take to keep communities safe as we build more transit connections: metrolinx.com/KeepingCommunitiesSafe

About the Ontario Line

- 15.6-kilometre subway line that will make it faster and easier to travel within Toronto and beyond.
- 15 stops and more than 40 connections to other transit, including GO train, subway, LRT, streetcar, and bus lines.
- Less than 30 minutes from one end of the line to the other.
- 28,000 fewer car trips off the road each day.

Contact us:
Call us 24/7 at: [416-202-5100](tel:416-202-5100)
Write to us at: ontarioline@metrolinx.com
Find us on X, Facebook, and Instagram:
[@ontarioline](#)
Visit the website:
www.metrolinx.com/ontarioline

Visit our community offices:
770 Queen Street East (near Queen & Broadview)
General hours:
Mondays, Tuesdays, and Fridays: 9:00 a.m. to 5:00 p.m.
Wednesdays and Thursdays: 10:00 a.m. to 6:00 p.m.

Thorncliffe Park:
East York Town Centre
45 Overlea Blvd., Toronto, ON M4H 1C3
Unit 153 (across from the Rogers store)
General hours:
Monday - Friday, 9 a.m. - 5 p.m.