

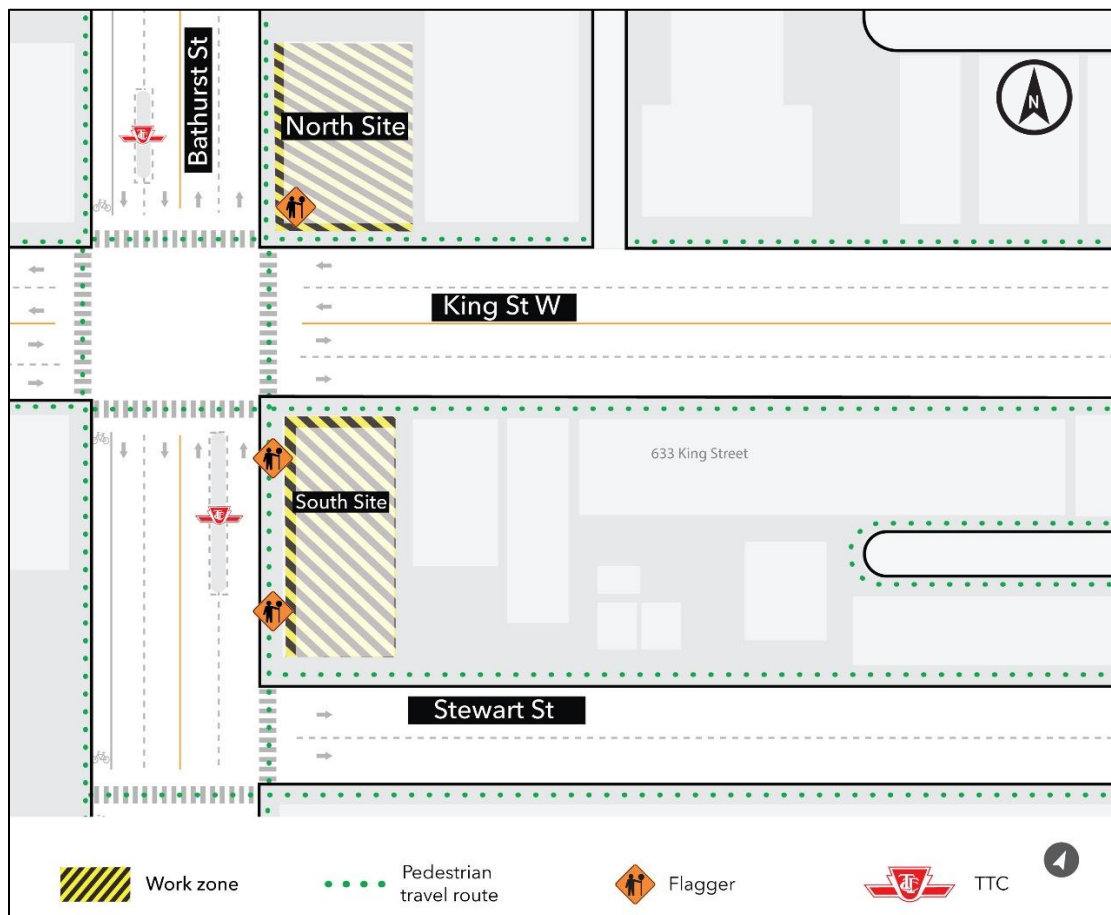
Signage installation at King St & Bathurst St

Expected start date and time: As early as September 2, 2025

Expected duration: Up to one (1) week

Hours of work: Weekdays (Monday to Friday) from 9:00 p.m. to 5:00 a.m.

Map of Affected Area



What is happening?

- Signage panels will be installed on the hoarding around the perimeter fencing of the construction zone at King and Bathurst intersection (see map above).
- To ensure the public is protected during the installation process, pedestrian access will be detoured around the works. Flaggers will direct or reroute pedestrians as required during installation of the signage along the site perimeter.
- Work will begin as early as Tuesday, September 2, 2025. While crews expect to finish the work in two overnight shifts, they may return to the site to make adjustments and finalize the installation for up to one week.

What to expect

- Crews will install Ontario Line signage along the walkway at King Street West and Bathurst Street intersection, on both the north and south sides of the street.
- The sidewalks along King Street West and Bathurst Street will remain open. Flaggers will direct pedestrians to detour around areas of this work as required.
- Work is expected to take place overnight between 9:00 p.m. and 5:00 a.m. beginning Tuesday September 2, 2025. Work is expected to be complete by Friday, September 5, 2025.
- Crews are expected to be on-site prior to 9:00 p.m. to set up equipment.
- Safety barriers will be used to separate pedestrians from the work zone.
- Crews will take measures to minimize noise impacts wherever possible.
- Crews will take measures to minimize impact on road traffic when unloading signage panels.
- All the necessary construction permits have been obtained.
- Work may be postponed or rescheduled due to unforeseen circumstances.
- Work area based on information provided and to be modified in field as required.
- For more information about upcoming station work please see **metrolinx.com/Ontarioline** or sign-up for the e-newsletter.
- Learn more about the measures we take to keep communities safe as we build more transit connections: **metrolinx.com/KeepingCommunitiesSafe**

About the Ontario Line

- 15.6-kilometre subway line that will make it faster and easier to travel within Toronto and beyond.
- 15 stops and more than 40 connections to other transit, including GO train, subway, LRT, streetcar and bus lines.
- Less than 30 minutes from one end of the line to the other.
- 28,000 fewer car trips on the road each day.

Contact us:

Call us 24/7 at: [416-202-5100](tel:416-202-5100)

Write to us at: ontarioline@metrolinx.com

Find us on X, Facebook, and Instagram:

[@ontarioline](#)

Visit the website:

www.metrolinx.com/ontarioline

Visit our community offices:

770 Queen Street East (near Queen & Broadview)

General hours:

Mondays, Tuesdays, and Fridays: 9 a.m. to 5 p.m.

Wednesdays: 1 p.m. to 6 p.m.

Thursdays: 10 a.m. to 6 p.m.

Thornccliffe Park:

East York Town Centre

45 Overlea Blvd., Toronto, ON M4H 1C3

Unit 153 (across from the Rogers store)

General hours:

Monday - Friday, 9 a.m. to 5 p.m.