

# Finch West Light Rail Transit (LRT) Project Construction Liaison Committee (CLC)

August 2025



# AGENDA

- Land Acknowledgement
- Important Milestones
- Updates
  - Finch West Station
  - Maintenance and Storage Facility and Light Rail Vehicle Testing
  - Humber College Station
  - Keele Street to Signet Drive
  - Signet Drive to Milvan Drive
  - Milvan Drive to Islington Avenue
  - Islington Avenue to Highway 27
- **Communications and Community Engagement**



Photo: Humber College station walkway, view south. 2024.12.04

# **Land Acknowledgement**



# LAND ACKNOWLEDGEMENT

Metrolinx acknowledges that we connect communities by building and operating transit within the traditional lands of the Anishinaabe, the Haudenosaunee and the Wendat peoples, for whom these lands continue to have great importance.

Treaties between First Nations and governments cover these lands, and the promises contained in these Treaties remain relevant to this day.

Metrolinx and its employees are committed to understanding the history of these lands and the continued impacts of colonization and take responsibility for actions to advance reconciliation.

Metrolinx will continue to seek the knowledge, expertise and experience of Indigenous partners and commits to doing business in a manner that is built on a foundation of trust, respect, and collaboration.



# Finch West Station



# FINCH WEST STATION



Finch West Station Occupancy is expected by the end of August 2025.



Benches, bike racks and landscaping at the Keele street entrance to the Finch West LRT station.

# **Maintenance and Storage Facility and Light Rail Vehicle Testing**



# MAINTENANCE AND STORAGE FACILITY (MSF)



The MSF green roof has many drought resistant rockery plants that attract pollinators and provide safe nesting spaces for birds.



A bird's eye view of the MSF green roof.



# LIGHT RAIL VEHICLE TESTING



Operator Driver Training continues to progress well, with the first cohort having been completed on July 4th and the second cohort expected to be completed on August 19th. 40 Toronto Transit Commission (TTC) vehicle operators, in addition to a combined total of 46 Tower and Power Control TTC Champions, have now completed training.

# TESTING AND COMMISSIONING



The operators will be supporting Revenue Service Demonstration (RSD), which is the next milestone after completion of Operator Driver Training and delivery of safety certification and commissioning documentation. The FWLRT project teams are focused on ensuring the next milestone, readiness for RSD, is achieved.



# Humber College Station

# HUMBER COLLEGE STATION



Covered pedestrian walkway between Humber College station and Humber Polytechnic.

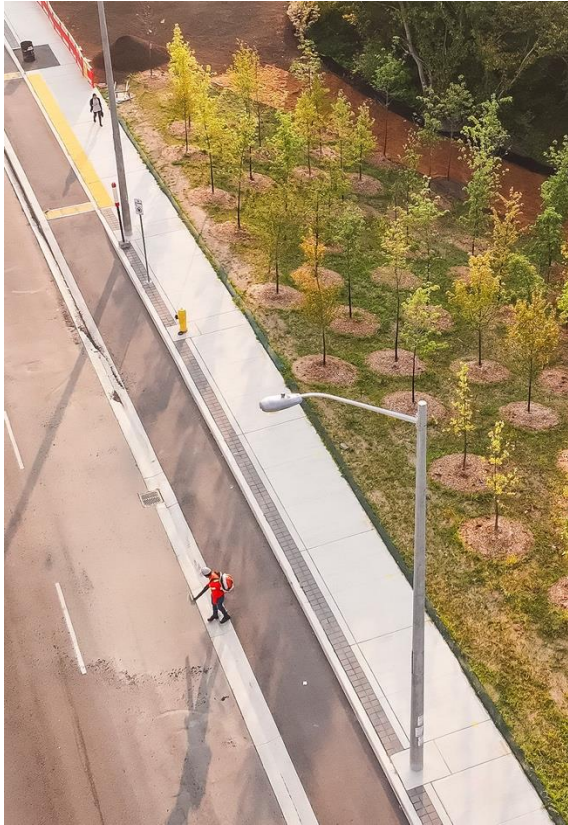


Humber College station north building entrance. Humber College station Occupancy was achieved October 2024.

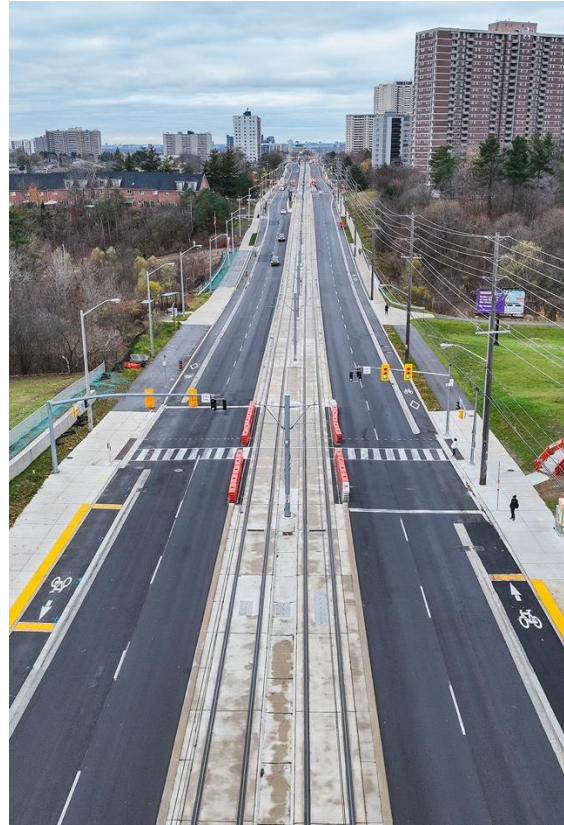


# **Keele Street to Signet Drive**

# KEELE STREET TO SIGNET DRIVE



Remediation work is ongoing with minimal impacts on traffic.



Pedestrian crossing near Tobermory Drive, view east.



Ticket Vending Machine and a Presto Tap Machine are found on each platform stop.



**Signet Drive to Milvan Drive**

# SIGNET DRIVE TO MILVAN DRIVE

- The area is in final configuration with sidewalks and bike lanes in place, except Canadian Pacific Rail bridge area.
- Final paving is complete, except Canadian Pacific Rail bridge area.
- Permanent traffic and transit signals are installed and activated.
- Remaining remediation work is ongoing with minimal impacts on traffic.
- Field modifications may occur to complete work safely and minimize impact on the public.
- Paid Duty Officers, flaggers, and detour signs will be used to direct traffic and improve safety as needed.
- Community members will be notified of any significant construction-related impacts, separately.



View west from Weston Road to Jayzel Drive.



**Milvan Drive to Highway 27**

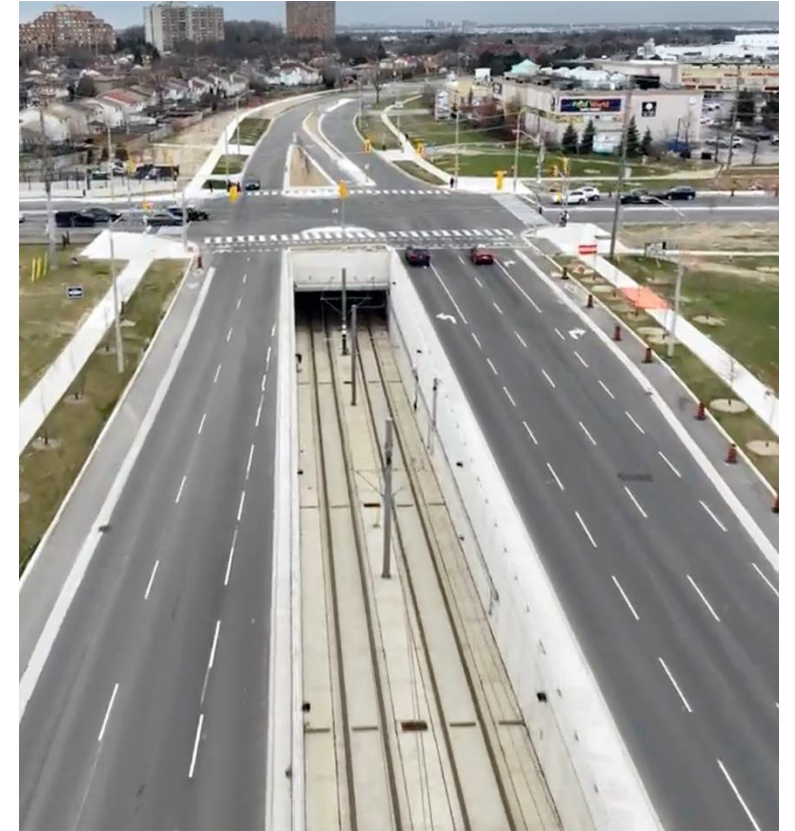
## MILVAN DRIVE TO HIGHWAY 27



View west from Milvan Drive to Duncanwoods stop.



View west of the Rowntree Mills stop at Kipling Avenue.



View west of the Humber College station portal at Highway 27 and Finch Avenue west.



# **Communications and Community Engagement**

# COMMUNICATIONS AND COMMUNITY ENGAGEMENT

## Completed Activities

- Know Your Stops engagements, July 7.
- Community Notices for Remedial Works.

## Upcoming Activities

- Metrolinx Summer Project Newsletter.
- Humber Polytechnic Student Orientation Day, August 29.
- Safety and Shop Local Ads for local community papers.



Photo: Print ad for shopping locally in the Finch West Community.

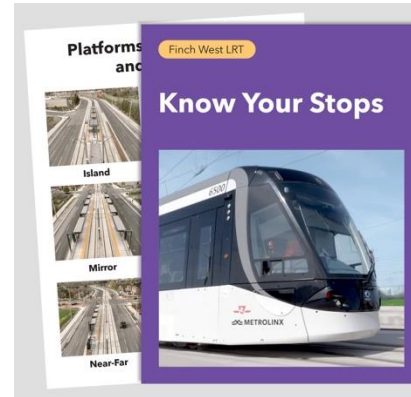


Photo: "Know Your Stops" Route and Stop information.

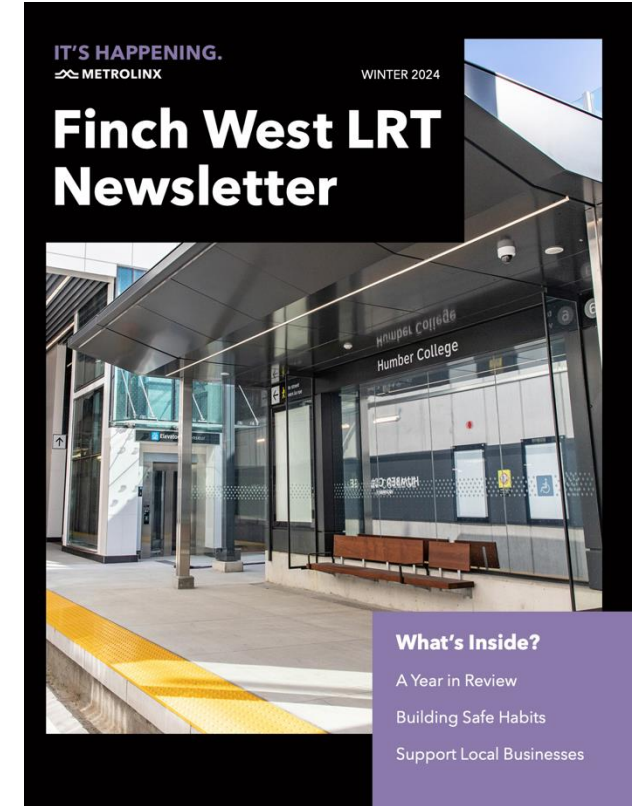


Photo: Q1 Finch West Project Newsletter.



# COMMUNICATIONS AND COMMUNITY BENEFITS

- The Maintenance period for the Finch West LRT has begun recruiting for positions at the Maintenance and Storage Facility.
- Job seekers can apply directly to jobs posted on Indeed.ca, [www.mosaictransit.com/jobs.html](http://www.mosaictransit.com/jobs.html), or send resumes and inquiries to: **[fwlrt\\_workforce@mtmgrp.ca](mailto:fwlrt_workforce@mtmgrp.ca)**



Photo: Stock photo.

# KEEPING YOU INFORMED

## Communication Methods

- E-Newsletter, Project Website Updates
- Construction Notices
- Metrolinx News Blog
- Social media
- Project Quarterly newsletter

## Engagement Tools

- Working or Advisory Group Meetings
- Business Liaison, curbside meetings
- Public Meetings

**Stay Informed:** [metrolinx.com/finchwestlrt](http://metrolinx.com/finchwestlrt) and sign up to our Toronto West e-newsletter

**Questions or comments:** [TorontoWest@metrolinx.com](mailto:TorontoWest@metrolinx.com), @FinchWestLRT, 416-202-6500



Photo: Stock photo.



**Thank you and Stay Safe**

