

Overnight Work & Trail Closures: Etobicoke Bridge Replacement Project August, September & October 2025

*Dates are subject to change due to inclement weather or other unforeseen circumstance.

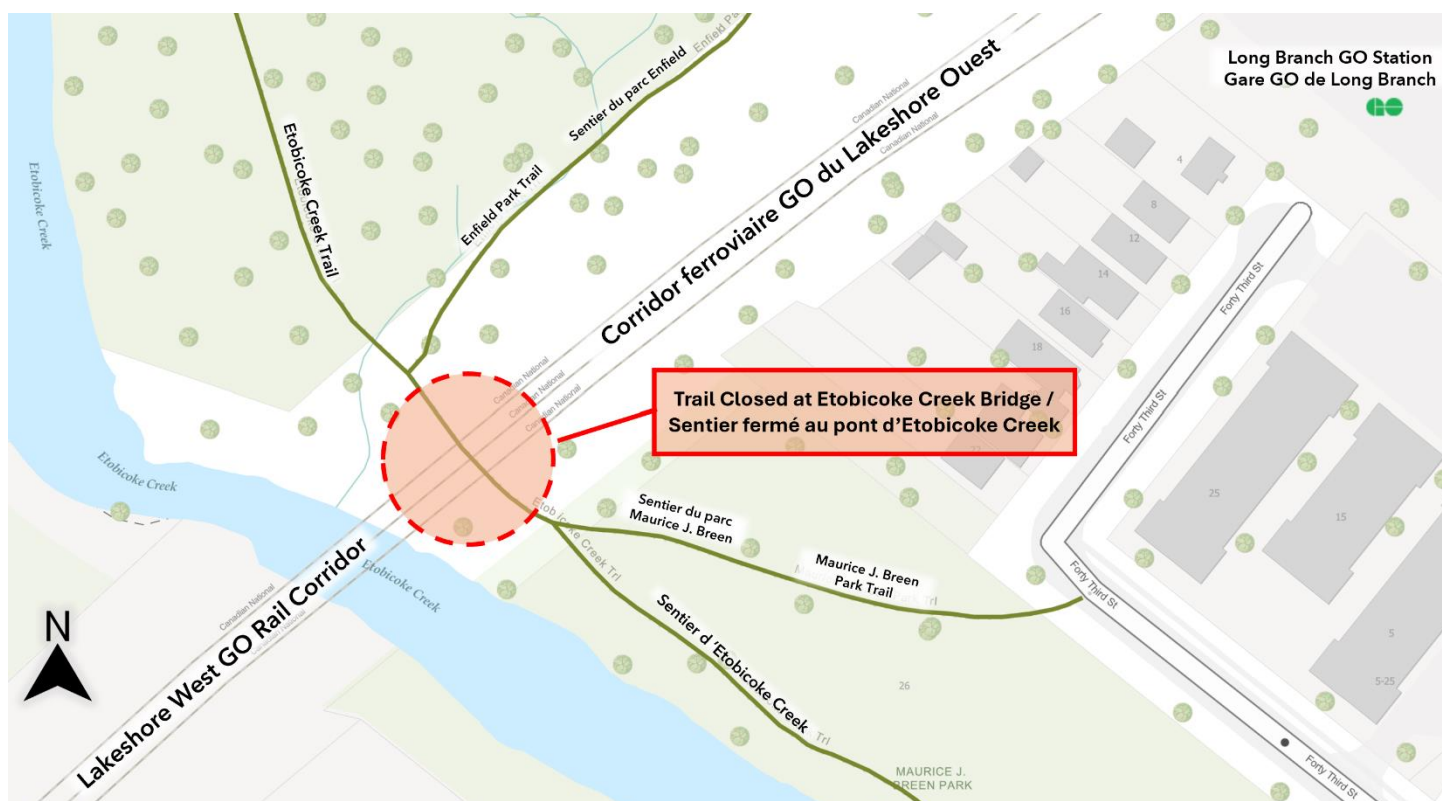


Figure 1: Map showing the approximate location of the work zone. Not to scale . For illustrative purposes

WHAT IS HAPPENING

Metrolinx is carrying out major rehabilitation work on the Etobicoke Creek Railway Bridge, just west of Long Branch GO Station. This work is critical to maintaining safe and reliable service on the Lakeshore West Line.

There are several upcoming dates that will include both day and night time work. To ensure public safety, the Etobicoke Creek Trail under the bridge in Maurice J. Breen Park will also be closed.

Closure Dates	Work Hours
August 27, 2025	Daytime Work: 7:00 a.m. – 5:00 p.m
September 12-15, 2025	Daytime and Overnight Work: 24 hours a day
September 26-29, 2025	Daytime and Overnight Work: 24 hours a day
October 3-6, 2025	Daytime and Overnight Work: 24 hours a day

WHAT TO EXPECT

- The Etobicoke Creek Trail under the bridge in Maurice J. Breen Park will be closed on August 27 for the day and for the following weekends:
 - September 12-15, 2025
 - September 26-29, 2025
 - October 3-6, 2025
- The trail must be closed for public safety while crews complete rehabilitation work on the bridge.
- Residents should expect some noise, vibration, dust, and site lighting.
- Our staff will take reasonable precautions to minimize disturbances to residents and commuters, including but not limited to the following:
 - Reduced idling of non-essential equipment
 - Pointing lights away from residential windows

HOURS OF WORK

- August 27, 7:00a.m.-5:00p.m.
- September 12-15, 24 hours a day
- September 26-29, 24 hours a day
- October 3-6, 24 hours a day

LOCATION OF WORK

- Etobicoke Creek Bridge

TRAFFIC DETAILS

- Increased vehicular traffic is expected at Lakeshore Boulevard, 43rd Street and 36 Towns Road during this time.

PEDESTRIAN DETAILS

- There will be no access under the bridge during the closures.
- Access to the trail will still be available via Enfield Park to Enfield Ave

COMMUNITY ENGAGEMENT

- Metrolinx has a dedicated community engagement team in place that works with residents and businesses in the Toronto West area.
- If you have any questions, please contact us using the information provided below.

Information as of: August 2025

For the French version of this notice, please visit www.metrolinx.com/lakeshorewest-docs-fr
This notice can be translated into a different language upon request by emailing us at TorontoWest@metrolinx.com

Pour la version française de cet avis, veuillez visiter www.metrolinx.com/lakeshorewest-docs-fr
Cet avis est disponible dans une autre langue sur demande. Si vous êtes intéressé, veuillez envoyer un courriel à TorontoWest@metrolinx.com

Contact Us:

-  Call us: **416-202-6911**
-  Write to us at: torontowest@metrolinx.com
-  Find us on Twitter [@GOExpansion](https://twitter.com/GOExpansion)
-  Visit the website: www.metrolinx.com/lakeshorewest
-  Subscribe to our e-blast: metrolinx.com/subscribe