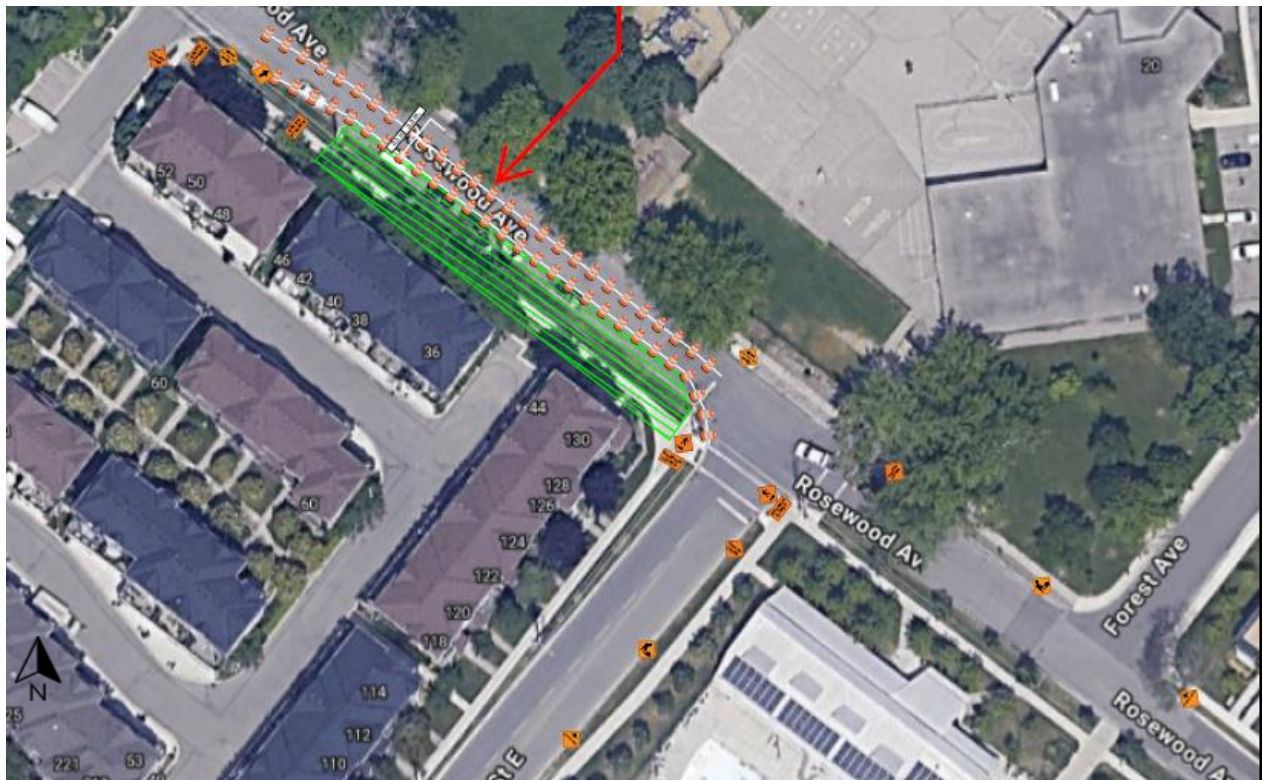


Installations of Multi-Use Duct Banks along Rosewood Avenue

August 27 to September 8, 2025



Project Overview

The Hazel McCallion LRT (HM LRT) project will be an 18-kilometre, 19-stop light rail service connecting people from the Port Credit GO station to the Brampton Gateway Terminal.

What You Need to Know

To connect primary power to Port Credit Station, multi-use duct banks will need to be installed along Rosewood and Park Street in stages. The first phase requires excavation adjacent to the townhouse units facing Rosewood at 60 Rosewood and will impact front access to the following units: 34, 36, 38, 40, 42, 46, 48, 50, 52. For the duration of this phase of work, residents will have to access their units from the rear

Information as of: August 2025

Works are expected to take place from 7 am to 7 pm Monday through Saturday, between August 27 and September 8, 2025. While there are no anticipated driveway impacts, lane restrictions on Rosewood Avenue will be implemented and removed daily. Sidewalks will remain closed for the duration of this phase of work.

Please note, work may be rescheduled due to weather or unforeseen circumstances. Please see roadway signage for the latest information. If you require the most up-to-date information, please reach out to peel@metrolinx.com and our team will provide you with e-updates of this work.

TIMING

- 7 a.m. and 7 p.m., Monday through Saturday from August 27 to September 8, 2025.
- Work could be rescheduled and delayed due to weather conditions or unforeseen circumstances.

TRAFFIC DETAILS

- Watch for slow moving vehicles entering and exiting work areas.
- Remember to reduce your speed when approaching lane reductions.

WHAT TO EXPECT?

- Every effort will be made to minimize disruptions.
- Residents and businesses near the work site can expect to hear noise and vibration caused by trucks, and other construction equipment related to this work.
- Residents will have to access their units from the rear entrance due to excavation within the public right of way. The following units along Rosewood Avenue are impacted: 34, 36, 38, 40, 42, 46, 48, 50, 52

TRANSIT DETAILS

- MiWay will continue to operate with regular service.
- Watch for additional signs directing passengers at bus stops as boarding areas may be relocated.
- Visit www.miway.ca/updates for updates on your bus route.

PEDESTRIAN DETAILS

- Please take care when travelling near construction areas.
- Watch for additional signs directing pedestrians & cyclists as detours will be required.
- Clear and defined walking paths will be maintained during construction to ensure pedestrian safety.

PROPERTY DETAILS

- Crews will not require private property access for this work.

CONTACT US

- Metrolinx has a dedicated community relations team in place to work with residents in Peel region through the construction and operation of this transit project.
- 24-hour line 416-202-7500

Contact Us:
Call us: 416-202-7500
Write to us at: peel@metrolinx.com
Find us on X @HazelMcCallionLine
Visit metrolinx.com to sign up for our newsletter