

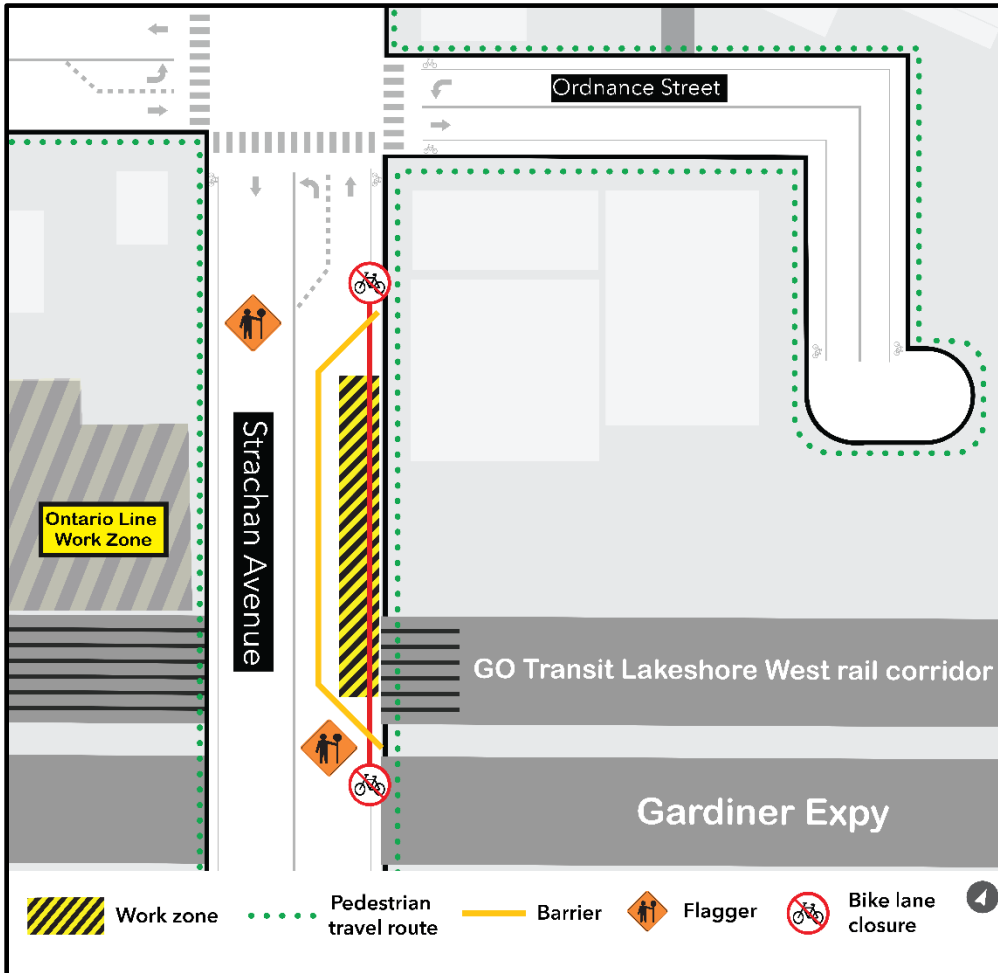
# Overnight Work - Installation of monitoring devices: Strachan Avenue

**Expected start date:** As early as September 15, 2025

**Expected duration:** Up to 3 weeks

**Hours of work:** Weekdays (Monday-Friday), 9:00 p.m. to 5:00 a.m.

Map of work area near Strachan Avenue:



## What is happening?

- Crews are installing monitors and investigating utilities around Strachan Avenue as indicated in the area shown in yellow on the map above, to support Ontario Line construction work.
- Devices are installed to monitor the area around utilities during construction. They will be installed underground and covered.
- They are expected to be in place until the completion of the project and may occasionally be revisited by crews for testing and inspection.
- Temporary lane and sidewalk closures are required for crews to safely carry out this work.

## What to expect?

- The work is scheduled to begin as early as September 15, 2025, and is expected to take up to 3 weeks.
- The northbound lane on Strachan Avenue will be closed intermittently, as indicated on the map above, vehicles are instructed to follow flaggers direction near the worksite.
- Pedestrian access will be maintained in all directions.
- The northbound bike lane on Strachan Avenue will be closed intermittently near the active work zone.
- Traffic access may resume prior to 5:00 a.m. if work is completed ahead of schedule.
- Transit services will be maintained.
- Signage will be posted advising of restrictions.
- Residents and businesses near the work zones will hear noise from heavy equipment including a hydrovac truck or drills as required.
- Crews will take measures to minimize noise impacts wherever possible.

- After each work shift, each area will be securely covered and marked for safety until workers return or the work is complete.
- All closures for work are temporary and intermittent; the area will only be closed while crews are surveying the specific areas. The area will be returned to public use upon completion of the monitoring device installation.
- All the necessary construction permits have been obtained.
- Work may be postponed or rescheduled due to unforeseen circumstances.
- For more information about upcoming station work please see **metrolinx.com/ontarioline** or sign up for the e-newsletter.
- Learn more about the measures we take to keep communities safe as we build more transit connections: **metrolinx.com/KeepingCommunitiesSafe**

## About the Ontario Line

- 15.6-kilometre subway line that will make it faster and easier to travel within Toronto and beyond.
- 15 stops and more than 40 connections to other transit, including GO train, subway, LRT, streetcar, and bus lines.
- Less than 30 minutes from one end of the line to the other.
- 28,000 fewer cars on the road each day.

Contact Us:	Visit our Community Offices:		
Call us 24/7 at: <a href="tel:416-202-5100">416-202-5100</a> Email us: <a href="mailto:ontarioline@metrolinx.com">ontarioline@metrolinx.com</a> Find us on X, Facebook, and Instagram: <a href="#">@ontarioline</a> Visit our website: <a href="http://www.metrolinx.com/ontarioline">www.metrolinx.com/ontarioline</a>	<b>Riverside:</b> 770 Queen St East near Queen and Broadview General Hours: Monday, Tuesday, and Friday: 9:00 a.m. – 5:00 p.m. Wednesday and Thursday: 10:00 a.m. – 6:00 p.m.	<b>Thorncliffe Park:</b> East York Town Centre 45 Overlea Blvd, Unit 153 Across from the Rogers store General Hours: Monday – Friday: 9:00 a.m. – 5:00 p.m.	<b>Pape/Danforth:</b> 810 Danforth Ave Between Woodycrest & Langford General Hours: Monday – Friday: 9:00 a.m. – 5:00 p.m.
Disponible en français sur demande. Si vous êtes intéressé, veuillez envoyer un courriel à <a href="mailto:ontarioline@metrolinx.com">ontarioline@metrolinx.com</a>			