



LAND ACKNOWLEDGEMENT

Metrolinx acknowledges that we connect communities by building and operating transit within the traditional lands of the Anishinaabe, the Haudenosaunee and the Wendat peoples, for whom these lands continue to have great importance.

Treaties between First Nations and governments cover these lands, and the promises contained in these Treaties remain relevant to this day.

Metrolinx and its employees are committed to understanding the history of these lands and the continued impacts of colonization and take responsibility for actions to advance reconciliation.

Metrolinx will continue to seek the knowledge, expertise and experience of Indigenous partners and commits to doing business in a manner that is built on a foundation of trust, respect, and collaboration.

SAFETY MOMENT - BACK TO SCHOOL

Let's all do our part to keep kids, families, and workers safe during the busy back-to-school season—especially near construction areas.

Watch for Construction Vehicles

Be aware during drop-off and pick-up times. Large vehicles have blind spots—always keep a safe distance.

Obey Traffic Signs & Signals

Respect reduced speed limits, detours, and flaggers in school and construction zones.

Use Designated Crosswalks

Remind kids: no shortcuts through construction sites—hidden hazards may be present.

Stay Alert

Avoid distractions (phones, headphones) while driving or walking. Children may be unpredictable.

Plan Your Route

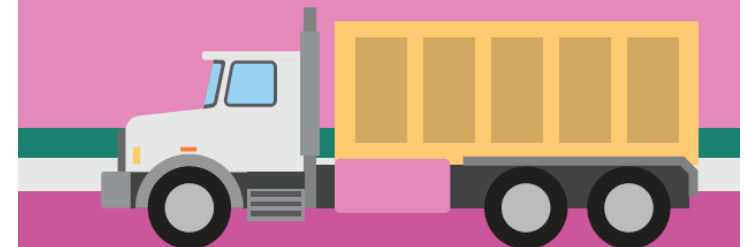
Give yourself extra time and consider alternate routes to avoid congestion near schools and construction.

Together, we can ensure a safe and smooth back-to-school season.

SCHOOL'S BACK

**SLOW DOWN,
LOOK TWICE.**

**Thank you for keeping
our communities safe.**



 METROLINX

Session Guidelines

We greatly appreciate the community members who are here to take part in this public session.

To ensure that everyone can contribute to a positive and safe community experience, all participants shall adhere to the following *Code of Conduct*:

- Treat the presenters and participants with respect and understanding
- Acknowledge and appreciate the diversity of individuals and their situations
- Refrain from supporting or engaging in any form of discriminatory behaviour

Metrolinx is committed to fostering a safe and respectful environment.

We encourage respectful and constructive communication.

Ontario Line

Pape-Danforth & Sammon CLC

September 10, 2025

AGENDA

1. Pape Danforth Updates *(15 mins)*

- Progress Update – August to September
- Jet Grouting
- TTC Box Underpinning
- Eight-Week Look Ahead
- Exceedances
- Overnight noise management

2. Discussion: *(15 mins)*

3. Sammon ESB Updates *(5 mins)*

- Construction Update

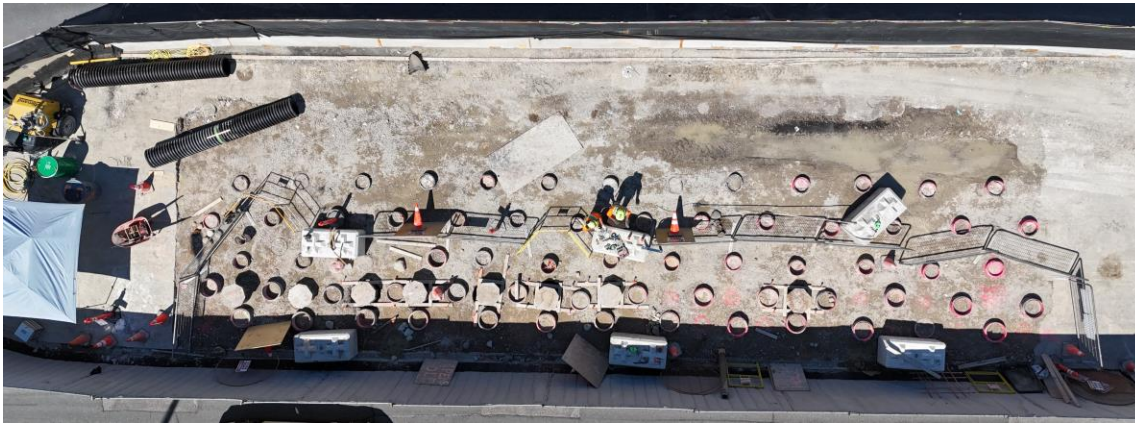
4. Discussion: Sammon ESB Updates *(5 mins)*

5. Action Log *(10 mins)*

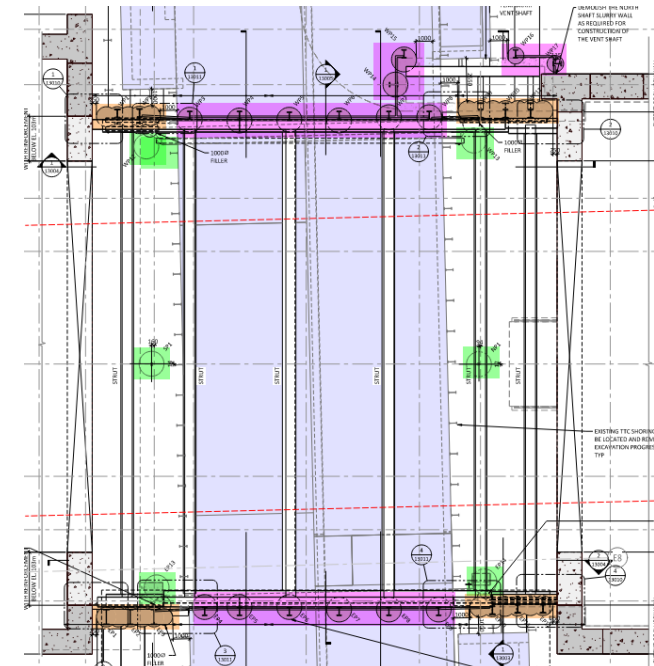
Pape-Danforth Updates

Major Updates from the month of August

- Completed installation of sleeves in the jet grout island for future jet grout works on Danforth Ave.

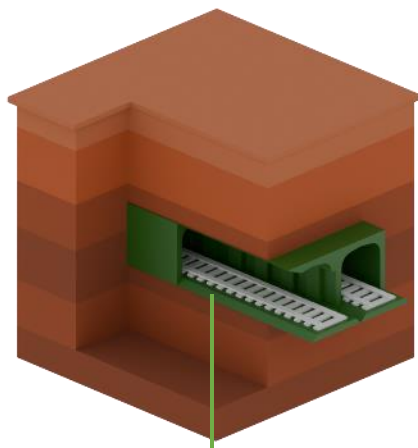


- Stage 1: Exposing the TTC box (TTC Box Underpinning)
 1. Install **solider piles** - Completed
 2. Install **deep secant wall** - Completed
 3. Install **TTC support Caissons**
 4. Excavate Area 1 in stages.



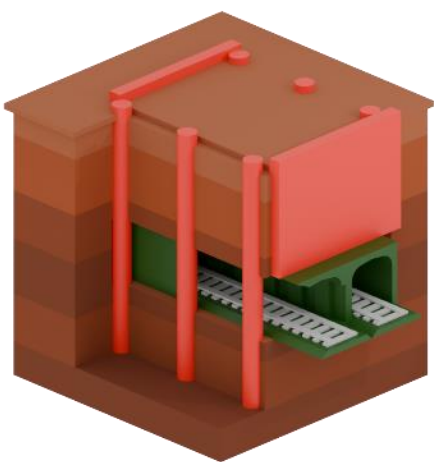
TTC Box Underpinning

Existing conditions



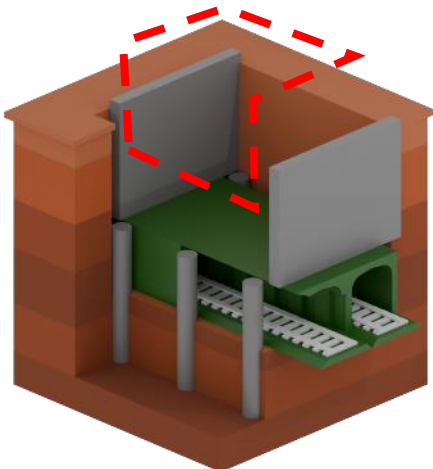
Existing TTC
Line 2 tunnel

Stage 1: Exposing the TTC box

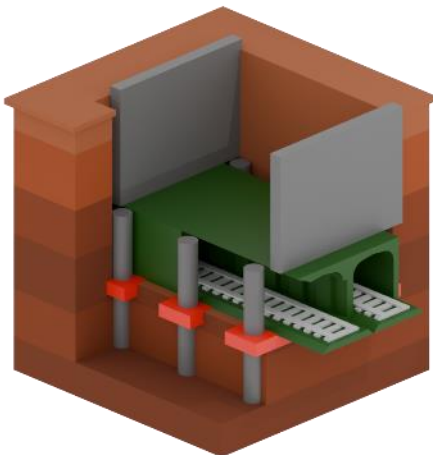


Install soldier piles, deep secant
wall, TTC support caissons

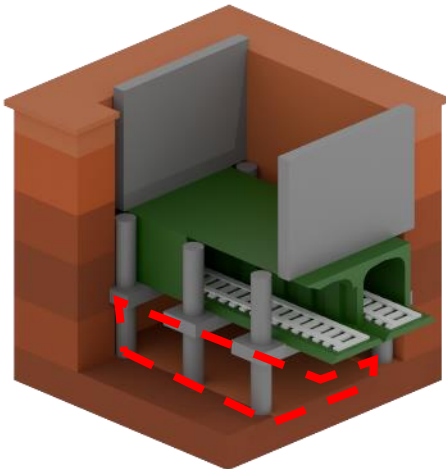
Stage 2: Underpin Line 2



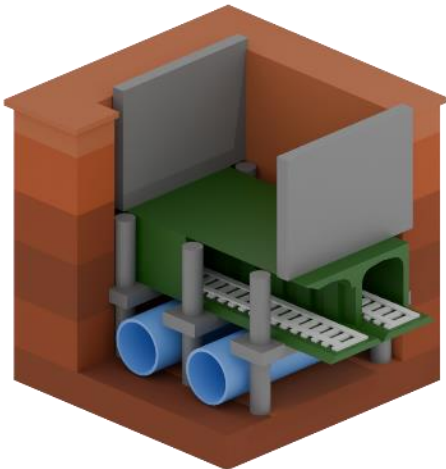
Excavate above
Line 2



Stage 3: Excavate beneath Line 2

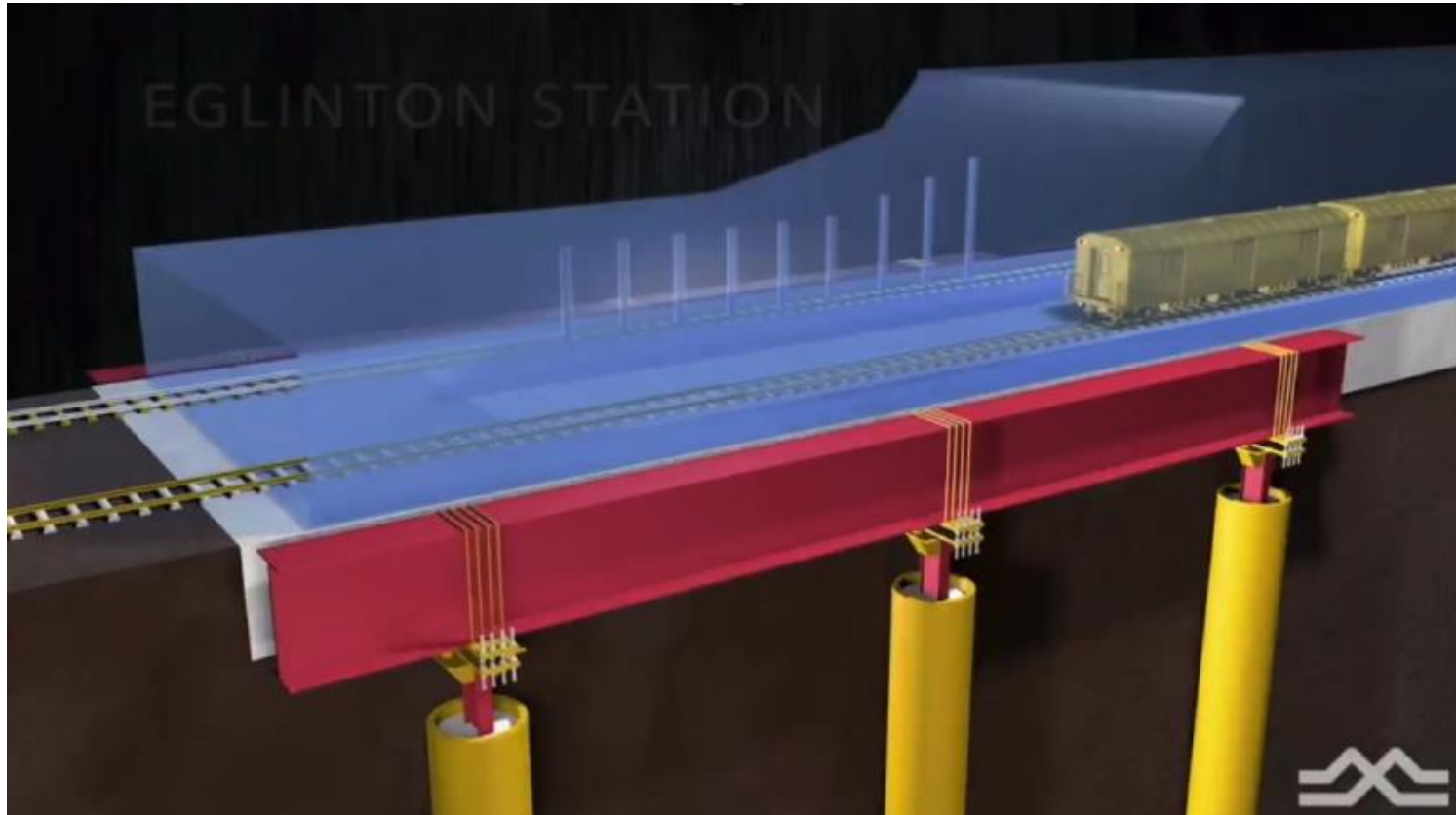


Future: Ontario Line beneath Line 2



TTC Box Underpinning - Video from Eglinton Crosstown Project

- Key takeaways:
 - Underpinning Pape station (an active subway station) is very sensitive work.
 - Monitoring requirements are strict.
 - [Link to Youtube Video: Underpinning Explainer](#)



TTC Box Underpinning - Video from Eglinton Crosstown Project

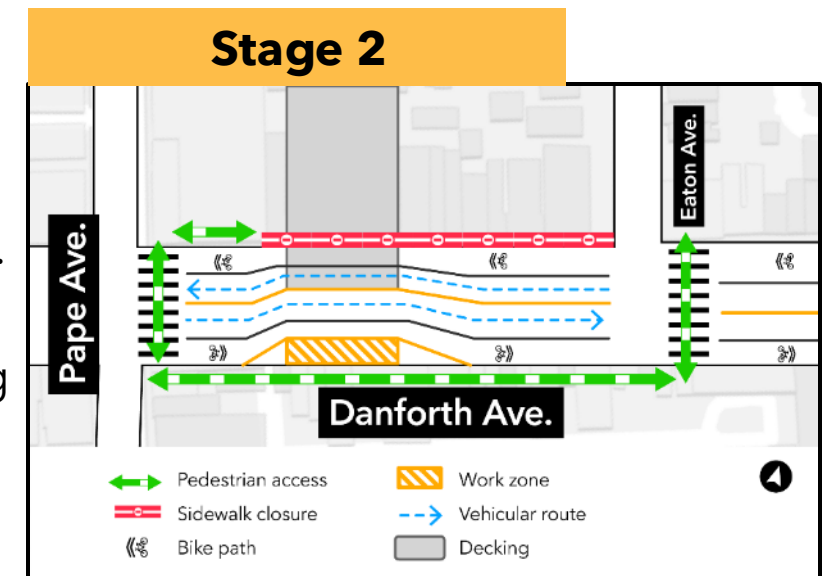
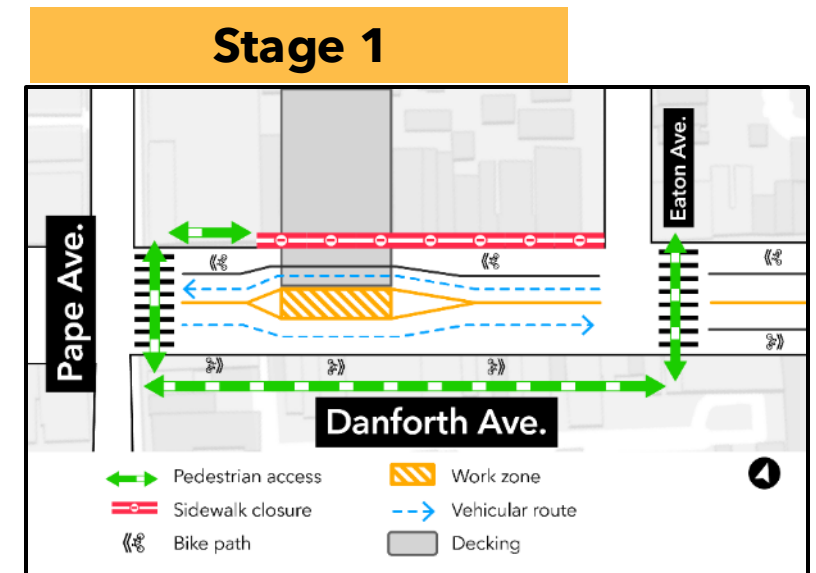


TTC Box Underpinning - Video from Eglinton Crosstown Project



Danforth Jet Grouting

- Jet grouting work will begin on Danforth Avenue in late July.
- Work will begin with utility exposure and protection, followed by jet grouting.
- Work will take approximately 8 months:
 - Stage 1 will take place from July 2025 to November 2025.
 - Stage 2 will take place from December 2026 to January 2026.
- All work will take place Monday-Friday from 7 a.m. to 11 p.m. and 7a.m. to 7p.m. on Saturday.
- During works, the sidewalk on the north side of Danforth will remain closed. Traffic and bike lanes will be diverted to accommodate the work zones but will remain open. The sidewalk on the south side of Danforth will remain open during both stages.
- Pedestrians are reminded to follow traffic signage and cross to the south side of Danforth to access the open sidewalk when travelling past the construction site.



Gertrude Jet Grouting Stages

Stage 1

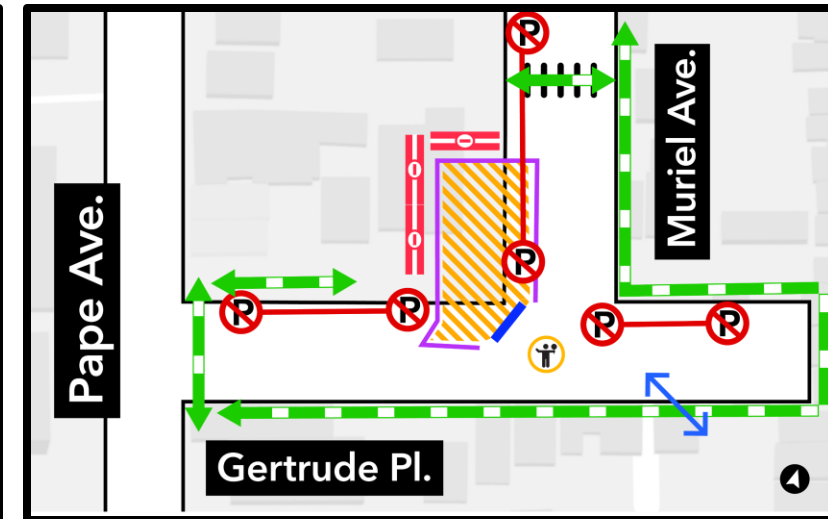
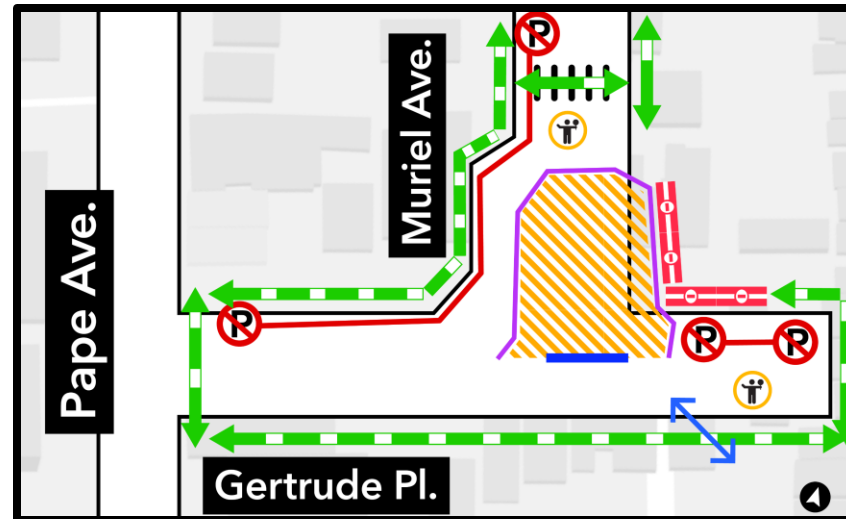
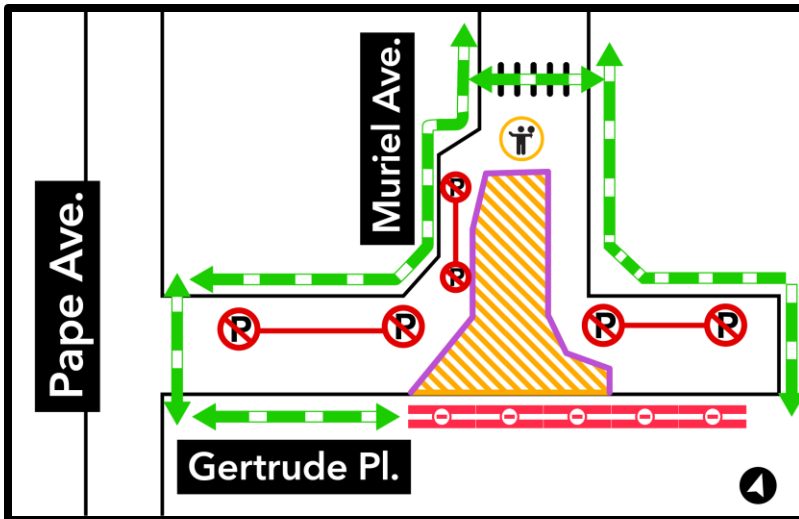
Completed in August

Stage 2

September 2025 -
June 2026

Stage 3

June 2026 - July 2026



**All work Monday - Saturday
7 a.m. to 7 p.m.**

- | | |
|--------------------|------------------|
| Pedestrian access | Work zone |
| Traffic control | Noise wall |
| Restricted parking | Entrance gate |
| Site access | Sidewalk closure |

*site access gate position may vary depending on the construction sequence.

Pape Station - Upcoming Works

#	Activity	Location	Expected Start	Expected Duration	Impact	Hours of Work	Mitigations
1	Piling for Stage 1*	Lipton	June 2025	September 2025	Noise	Monday – Saturday: 7am – 11pm	Noise wall
2	Jet Grouting	Gertrude	June 2025	July 2026	Noise	Monday – Friday: 7am-7pm Saturday: Maintenance from 7am-7pm (including hauling). Hydrovacating will not start until 9am on Saturday.	Noise wall
3	Jet Grouting	Danforth	July 2025	January 2026	Noise	Monday – Friday: 7am-11pm Saturday: Maintenance from 7am-7pm (including hauling).	Noise wall
4	Traffic Decking Installation	Gertrude	September 2025	October 2025	Noise	Monday – Friday: 7am-7pm	Noise wall
5	Shaft Excavation (to Level 3)	Pape	October 2025	June 2026	Noise	Monday – Friday: 24 hrs** Saturday: 6am-7pm	Noise wall

*Stage 1 refers to the new work presented on slide 4 (“TTC Box Underpinning”)

** The following slides, “Site Improvements”, highlight the efforts made to reduce construction impacts on the public moving into the future stages of construction.

Site Improvements

- All trucks are equipped with broadband backup alarms.
- Lighting adjustments are made to avoid exposure to residents.

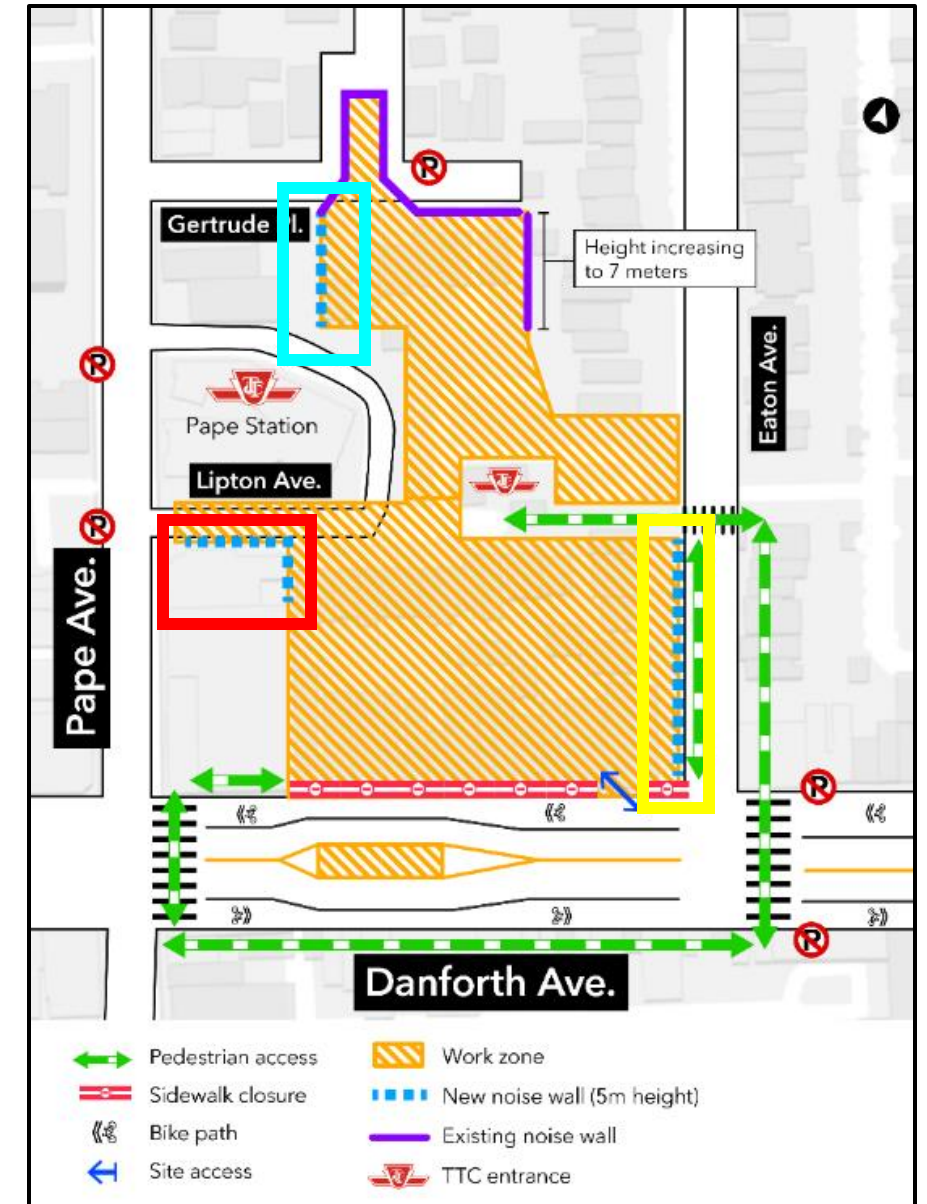
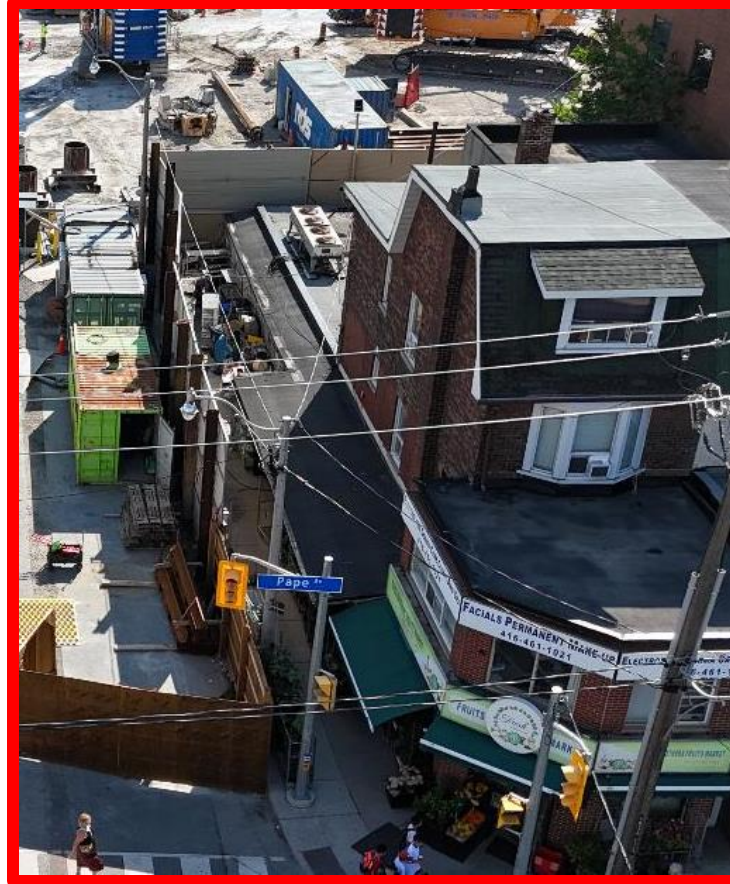
Before:



After:



Site Improvements - additional sound walls added at the Pape site



Registered Exceedances at Noise Receptors: August 2025

No	Day/Time of Exceedances	Detail	Location	Source	Corrective Action	Complaint Received (Y/N)
1	Tuesday, Aug 19 th - morning	Noise	Lipton Ave	Trenching for utilities	Temporary works completed in a day	N
2	Aug 1, 7, 8, 9, 12, 13, 14, 16 - early morning/ late night	Noise	Danforth Ave Island	Hydrovac	Sound blankets were added around the inside of the Danforth island.	Y (Aug 12/13)



Overnight Noise Management

24-Hour Excavation

Starting in late October, 24-hour work will begin at the Pape-Danforth site for excavation of the station shafts.

Overnight Work Justification:

- Shaft excavation and the subsequent underpinning of the existing TTC station **must be completed** before the tunnel boring machines arrive at Pape Station.
 - Stoppages in TBM operation introduce significant technical risk that must be avoided if possible.
 - Working overnight allows us to significantly accelerate the schedule and minimize this risk.
- 24-hour work with appropriate mitigations is standard in transit projects across Toronto, including those conducted by both Metrolinx and the TTC.
 - TTC – [King & Dufferin Streetcar Track Renewal](#)
 - Metrolinx – [Don Yard Rail Corridor Overnight Excavation](#)

In response to community concerns stemming from previous overnight works at Pape-Danforth, the team has applied lessons learned and best practices to minimize noise impacts as much as possible during upcoming overnight excavation works.

24-Hour Excavation: Noise Management

Area	Previous Conditions	Improvements
Site Access and Gates	<ul style="list-style-type: none">Site access via Eaton Ave	<ul style="list-style-type: none">Eaton Ave gate removed
Noise Barriers	<ul style="list-style-type: none">Areas of five-metre noise walls around portions of the site.Hoarding and gates in certain sensitive areas.	<ul style="list-style-type: none">Site perimeter adjacent to Eaton Avenue and Gertrude Place and sections of Pape Avenue enclosed with noise walls.Major operations (excavation, loading) to take place below noise wall threshold.
Truck Backup Alarms	<ul style="list-style-type: none">Broadband backup alarms not utilized	<ul style="list-style-type: none">Broadband backup alarms in place.
Generator Usage	<ul style="list-style-type: none">Significant noise emanating from large generator powering slurry plant – required as part of slurry wall construction processOther generators to power lights and various equipment.	<ul style="list-style-type: none">Large generators for powering slurry plants removed from site
Other Site Improvements	N/A	<ul style="list-style-type: none">Installation of stripping to muffle door and gate noises during opening and closing.Establishment of one-way traffic routes within site to reduce reversals.

Major Equipment During 24-Hour Overnight Construction

Slurry Wall Construction (June 2024-April 2025)



Slurry Plant



Concrete Trucks



Plant Generators

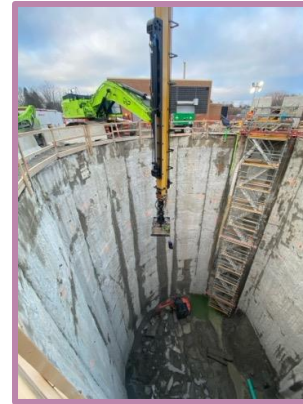


Hydromill



Mobile Crane

Excavation (Beginning October 2025)



Excavator



Mini-Excavator



Dump Trucks



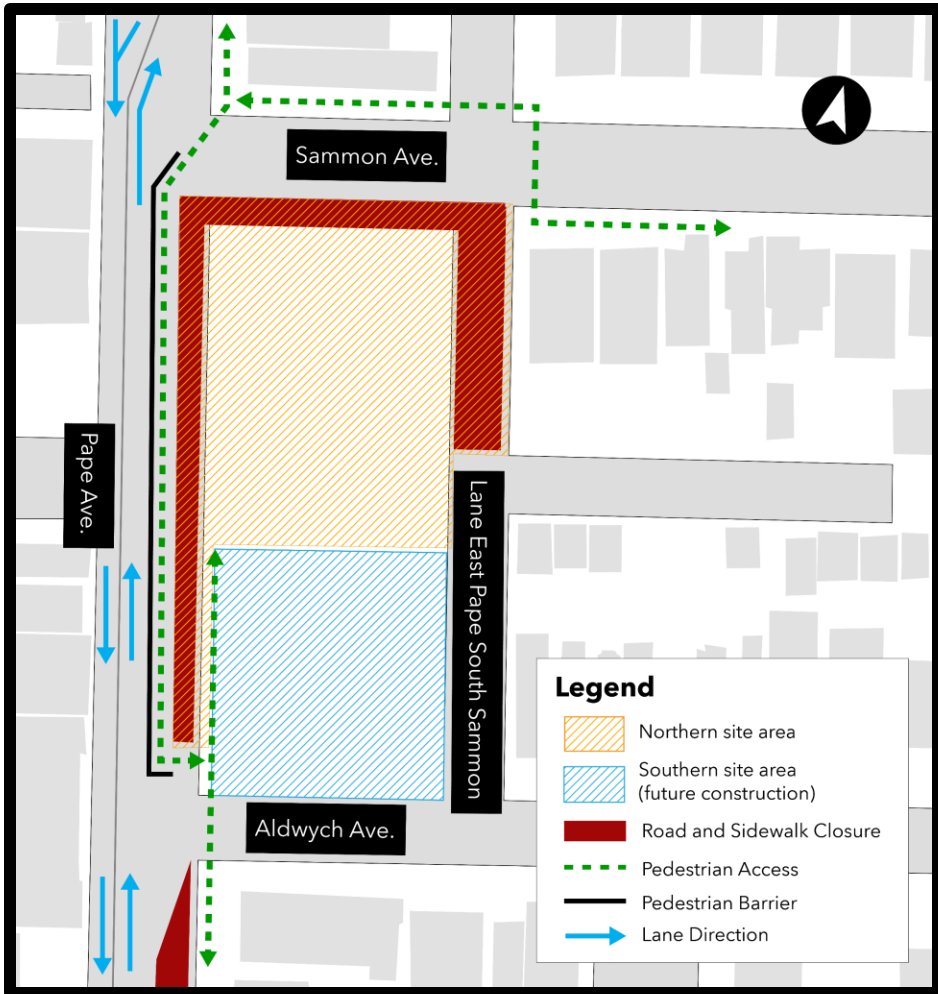
Tower Crane

Note: Drill rig for caisson installation to be removed from site before excavation

Sammon ESB Updates

Construction Update

Sammon Avenue Emergency Services Building & Track Crossover



Work Completed to Date

- Stage 1 of excavation work started in April 2024 is now complete in the northern site area.

Road Closures to Expect

- The two east side lanes on Pape Avenue will remain closed, with bidirectional traffic open on the west side lanes.
- The north section of the laneway east of Pape Avenue (Lane East Pape South Sammon) connecting to Sammon Avenue will remain closed to traffic.
- Residents can continue to use the south section of the laneway that connects with Aldwych Avenue.

Site Changes to Expect

- Additional excavation work in the southern site area to construct the Sammon ESB and crossover is in the planning stages.

Action Items

Suma.Apparao-Das@ttc.ca

Action Log

#	Questions Asked / Action Items	Response / Resolution	Status
1	Metrolinx will invite Toronto Parking Authority to future CLC meetings.	Metrolinx has reached out to Toronto Parking Authority on this request and is awaiting a response.	Complete
2	Metrolinx will confirm and share the timeline for reopening the north sidewalk on Danforth Ave.	The sidewalk is currently planned to remain closed until the end of the project.	Complete
3	Metrolinx will speak with the TTC to address bus boarding/descending concerns.	Metrolinx continues to work with the TTC for options to improve bus boarding/descending concerns. Lane markings have been installed along the curb lane and the fast fencing on the east side of Pape Ave has been pushed back to create greater space for pedestrians in the area. Metrolinx will continue to work with the TTC on this front.	Complete
4	GIP will investigate increasing the use of the drill auger cleaning attachment.	Monitoring data was reviewed, and no exceedances have been caused by the auger. Drilling will not be performed between 11pm-7am.	In progress
5	Metrolinx will provide TBM and excavation timelines at the next CLC meeting.	Metrolinx is in process gathering this information. We are looking to provide a more fulsome and concrete understanding of TBM timelines in collaboration with our tunnel constructor PNC. As design decisions are ongoing, Metrolinx will present more details at a future CLC.	In progress

Action Log

#	Questions Asked/ Action Items	Response / Resolution	Status
6	Metrolinx will circulate the materials to the committee three days in advance of the CLC meetings.	It is not always possible for Metrolinx to provide meeting materials three day in advance as we try to aim to include the most relevant and updated information in our materials. We will work towards providing materials 24hrs in advance.	Complete
7	GIP will arrange to clean temporary sidewalks at Gertrude Pl. and Muriel Ave.	Sidewalks have been cleaned.	Complete
8	Metrolinx will report back to the committee regarding the rodent management plan and clarify the decision process.	<p>Our constructor, GIP uses the following on-site rodent controls:</p> <ul style="list-style-type: none">• A professional third-party exterminator oversees the site• Bait traps are placed around the perimeter of the site, with regular return visits to conduct inspections and re-bait as necessary• Frequent cleaning of garbage, with garbage stored in a secure container• Worker facilities rented in off-site buildings, creating separation between pest-attracting activities (i.e. meal breaks) and site. <p>Individuals with rodent concerns in their home or business are asked to reach out to the Ontario Line Community Engagement team at 416-202-5100 or by email at ontarioline@metrolinx.com. We can investigate to determine if the rodent issue is related to Ontario Line construction activities. If it that is the case, Metrolinx will provide for rodent treatment through our vendor.</p>	Complete
9	GIP will update the jet grouting diagram to clarify the schedule and start times.	The slides and diagrams have been amended	Complete