

GO Expansion

Kitchener Fourth Track and Bloor GO Station (TTC Connection) Construction Liaison Committee

September 11, 2025



AGENDA

- Land Acknowledgment
- Safety Moment
- GO Expansion Overview
- Kitchener Fourth Track
 - Project Overview
 - Project Timeline
 - Work Progress
 - What To Expect Next
- Bloor TTC Connection
 - Project Overview
 - Project Timeline
 - Work Progress
 - What To Expect Next
- Committee Discussion
- Community Engagement

LAND ACKNOWLEDGEMENT

Metrolinx acknowledges that we connect communities by building and operating transit within the traditional lands of the Anishinaabe, the Haudenosaunee and the Wendat peoples, for whom these lands continue to have great importance.

Treaties between First Nations and governments cover these lands, and the promises contained in these Treaties remain relevant to this day.

Metrolinx and its employees are committed to understanding the history of these lands and the continued impacts of colonization and take responsibility for actions to advance reconciliation.

Metrolinx will continue to seek the knowledge, expertise and experience of Indigenous partners and commits to doing business in a manner that is built on a foundation of trust, respect and collaboration.



Safety Moment

GO Expansion Overview

The GO Expansion program will provide a range of improvements across the GTHA:

**More
all-day
service**



**Service
in both
directions**



**Capacity for trains
every 15 minutes
or better**



**Faster
and more
efficient fleet**



**More accessible
stations**



**An expanded
Union Station**



Over 10,000
weekly trips from
3500 weekly trips
in 2019

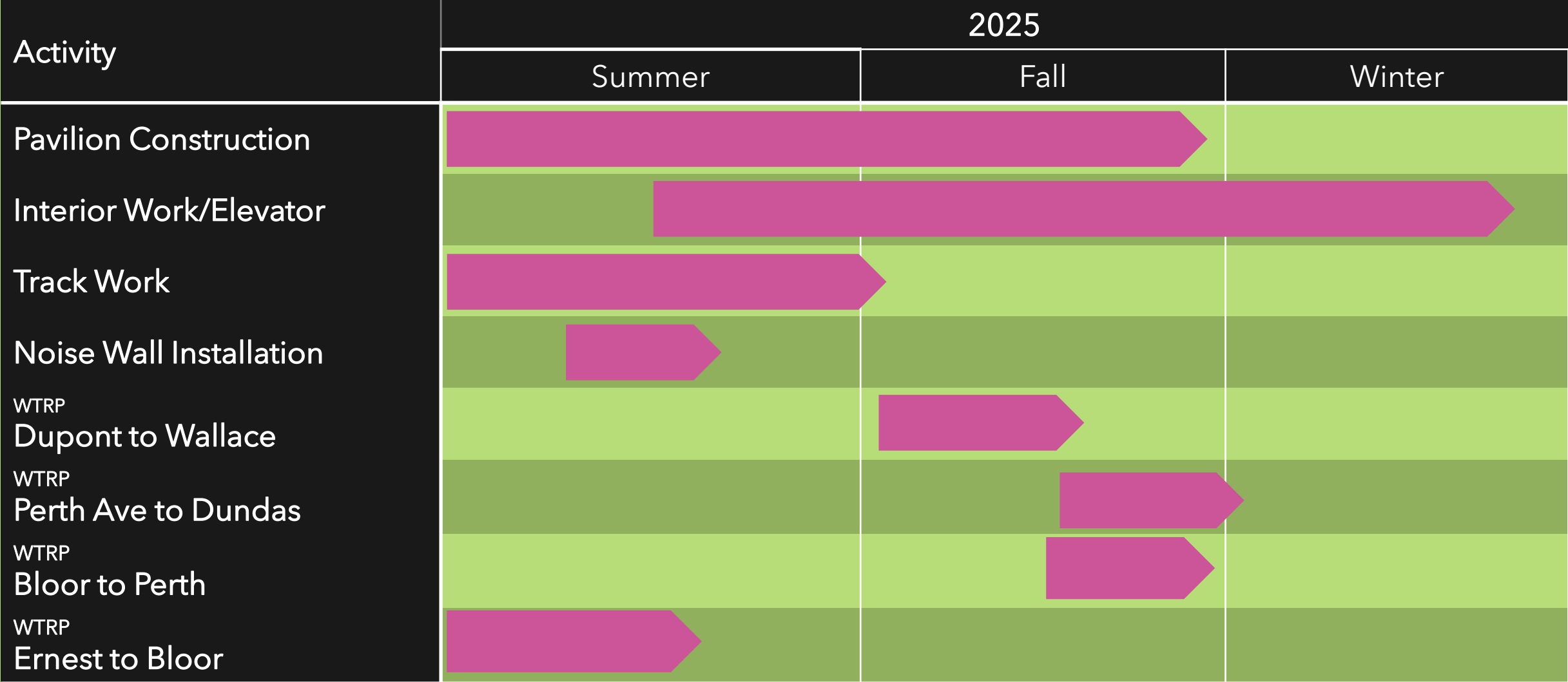
New trains will reach
speeds of 140km/h
between stations, making
the GO Train faster than
taking a car in virtually
every instance

Improvements to
stations access and
boarding and
alighting

Capacity for train
and passenger
movements for the
rest of the century

Kitchener Fourth Track Project Update

PROJECT TIMELINE



This timeline may be subject to change due to weather or unforeseen circumstances

COMPLETE

Pavilion

- Painting
 - Structural Steel
 - Tunnel Interior
- Metal Roof Deck
- Concrete Kneewall



IN PROGRESS

Bloor GO Tie Bracing

- Track Work at UP Express Platforms



IN PROGRESS

Pavilion/Tunnel

- Roofing and Rough Carpentry
- Glass Support Angles
- Tunnel Lighting
- Mechanical Work



IN PROGRESS

Railpath Realignment North of Bloor

- Trench Drain Installed
- Concrete and Asphalt Paving
- Security Fence Installation

Bloor to Perth

- Shoulder Installation



IN PROGRESS

Noise Wall Installation

- Randolph Avenue to Ernest Avenue



IN PROGRESS

Trackbed Preparation

- Ernest Avenue to Bloor Street



WHAT TO EXPECT NEXT

Permanent Closure of Ernest Avenue Access to Bloor GO Station

- Fall/Winter 2025. Exact date to be confirmed
- To accommodate completion of the noise wall and trackbed
- Access Bloor GO via Bloor Street or Dundas Street entrances



WHAT TO EXPECT NEXT

Pedestrian Pavilion (at Randolph Avenue)

- Roofing
- Exterior Glass
- Stone Veneer
- Connection to City Sanitary System
- HVAC Work
- Electrical Work
- Elevator



WHAT TO EXPECT NEXT

- Bloor St Pedestrian Bridge
 - City of Toronto bridge surface rehabilitation
 - Work to be performed this Fall



Bloor TTC Connection Project Update

PROJECT TIMELINE

We are awaiting an update on the timeline due to unforeseen circumstances.

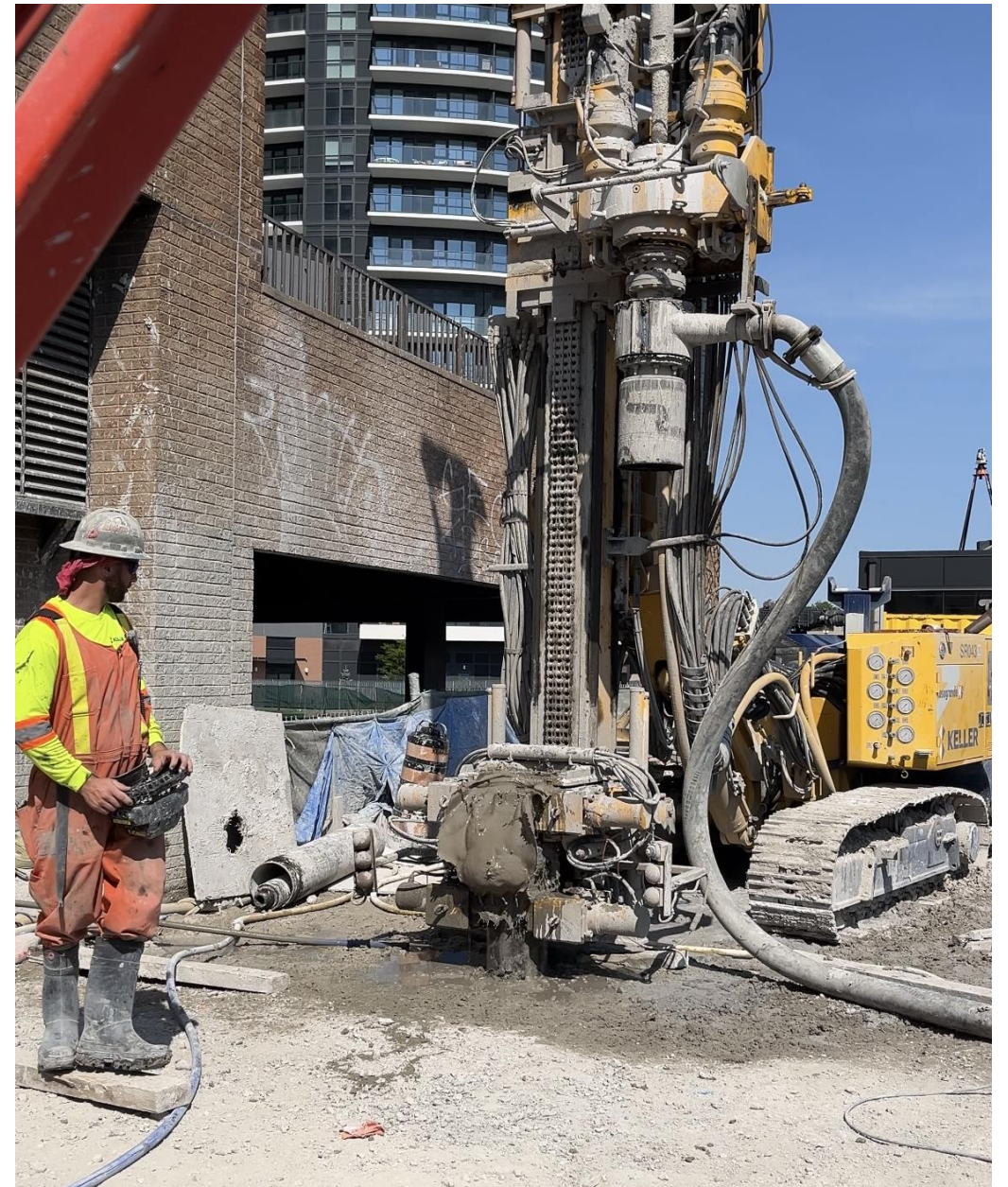
We apologize and will update this at the next CLC.

This timeline may be subject to change due to weather or unforeseen circumstances

COMPLETE

Micropiles

- Micropiles at the Pedestrian Box Structure.



In Progress

Power Shutdown (Crossways) and Bus Duct Switchover

Work Schedule

- The Crossways Power shutdown will occur over two separate days. The first shut down occurred on August 16 and the next shutdown will be communicated when a date is confirmed. The work will occur from 6 a.m. to 7 p.m.
- Removal of the inactive bus duct will occur after the Switchover is completed from Monday to Friday (7 a.m. to 4 p.m.)

Community Impacts

- The power shutdown notice has been provided to all Services and Tenants that will be affected.
- All work will be within the hoarded area.



WHAT TO EXPECT NEXT

Generator Installation Bloor GO – Passenger Pick-Up/Drop-Off (PUDO)

Work Schedule

- Generator Delivery is scheduled to occur during low peak hours

Community Impacts

- All work will be within the hoarded area. Traffic Control will be implemented, and proper signage will be displayed for the duration of the work.



WHAT TO EXPECT NEXT

Pedestrian Box Structure Construction

- Excavation
- Waterproofing

Work Schedule

- Monday to Friday, 9 a.m. to 3 p.m.

Community Impacts: Noise, Dust and Light

- Noise and air monitors have been installed around the project area to ensure that the project requirements are met. Any exceedances will be flagged and mitigated, wherever possible.



Committee Discussion

COMMUNITY ENGAGEMENT

Updates will be communicated to the community via:

- Canada Post Mail Drops
- Bi-weekly Toronto West E-Newsletter
- Project Website (metrolinx.com/kitchener)
- Monthly Construction Liaison Committee (CLC) Meeting
- Virtual and In-Person Public Meetings
- Community Pop-Ups
- Toronto West Phone Number: 416-202-6911
- Toronto West Email: TorontoWest@metrolinx.com
- X: @GOExpansion
- Metrolinx Engage

Cette présentation est disponible en français sur demande. Si vous êtes intéressé, veuillez envoyer un courriel à TorontoWest@metrolinx.com

