

# LAND ACKNOWLEDGEMENT

Metrolinx acknowledges that we connect communities by building and operating transit within the traditional lands of the Anishinaabe, the Haudenosaunee and the Wendat peoples, for whom these lands continue to have great importance.

Treaties between First Nations and governments cover these lands, and the promises contained in these Treaties remain relevant to this day.

Metrolinx and its employees are committed to understanding the history of these lands and the continued impacts of colonization and take responsibility for actions to advance reconciliation.

Metrolinx will continue to seek the knowledge, expertise and experience of Indigenous partners and commits to doing business in a manner that is built on a foundation of trust, respect, and collaboration.







# **Ontario Line Thorncliffe Park Construction Liaison Committee**

**August 28, 2025**



# AGENDA

## 1. Welcome (5 minutes)

- Land Acknowledgement
- Agenda
- Safety Moment
- Session Guidelines

## 2. Advanced Works (15 minutes)

- Traffic Impacts
- Demolitions
- Third-party Utility Relocations
- EMS Access
- Discussion

## 3. West Don Crossings ( 3 minutes)

- July - August Progress
- Eight week lookahead

## 4. Beth Nealson Underpass (3 minutes)

- July - August Progress
- Eight week lookahead

## 5. Don Valley Crossings (10 minutes)

- July - August Progress
- Discussion

## 6. Thorncliffe Park Guideway and Station ( 5 minutes)

- July - August Progress
- Eight week lookahead
- Discussion

## 7. Community Issues and Responses (20 minutes)

## 8. Action Items



## Session Guidelines

We greatly appreciate the community members who are here to take part in this public session.

To ensure that everyone can contribute to a positive and safe community experience, all participants shall adhere to the following *Code of Conduct*:

- Treat the presenters and participants with respect and understanding
- Acknowledge and appreciate the diversity of individuals and their situations
- Refrain from supporting or engaging in any form of discriminatory behaviour

**Metrolinx is committed to fostering a safe and respectful environment.**

**We encourage respectful and constructive communication.**



## SAFETY MOMENT - BACK TO SCHOOL

**Let's all do our part to keep kids, families, and workers safe during the busy back-to-school season—especially near construction areas.**

### **Watch for Construction Vehicles**

Be aware during drop-off and pick-up times. Large vehicles have blind spots—always keep a safe distance.

### **Obey Traffic Signs & Signals**

Respect reduced speed limits, detours, and flaggers in school and construction zones.

### **Use Designated Crosswalks**

Remind kids: no shortcuts through construction sites—hidden hazards may be present.

### **Stay Alert**

Avoid distractions (phones, headphones) while driving or walking. Children may be unpredictable.

### **Plan Your Route**

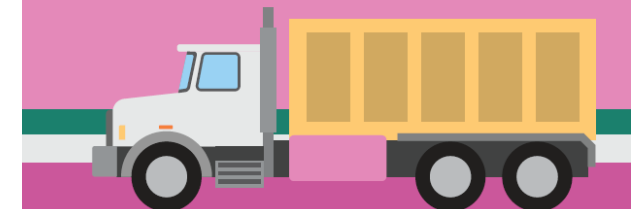
Give yourself extra time and consider alternate routes to avoid congestion near schools and construction.

**Together, we can ensure a safe and smooth back-to-school season.**

**SCHOOL'S BACK**

**SLOW DOWN,  
LOOK TWICE.**

**Thank you for keeping  
our communities safe.**



 METROLINX



# **Construction Update: Advanced Works**



## Overview of Advanced Works

- Expected completion date for advanced works on Overlea Boulevard is early October 2025.
- Periodic noise and vibration impacts are expected. Monitors are in place to ensure any exceedances can be addressed.
- Currently, GIP is completing road building, street light installation and sanitary sewer replacement.
- The watermain pressuring testing and water samples have all passed. Service connections will be starting at the end of August and complete by mid-September 2025.
- Water service impacts are expected and will be scheduled overnight.
- Residents and business owners will be notified prior to a water shut offs



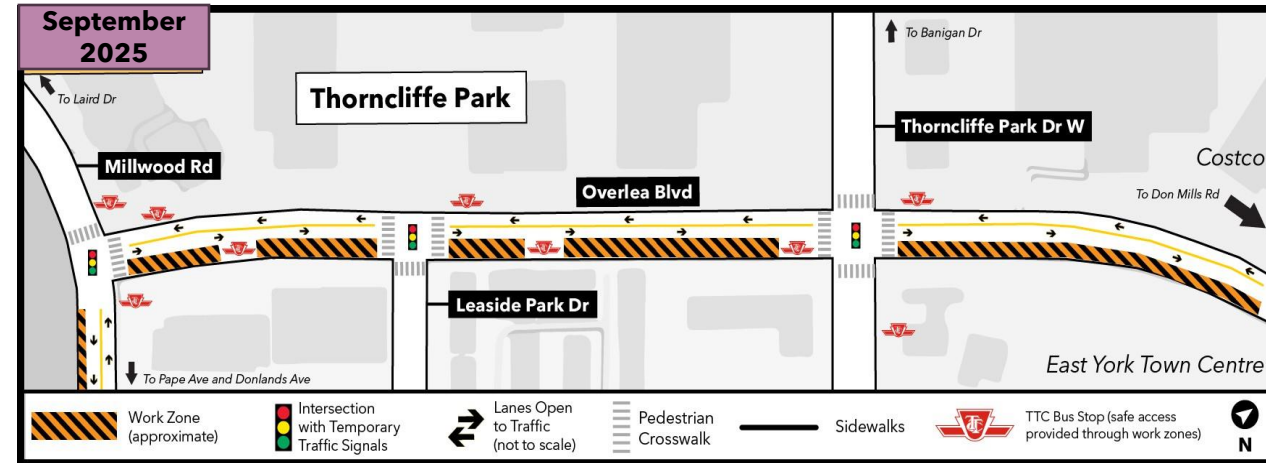
Road restoration on Overlea Blvd. –  
Aug. 18, 2025



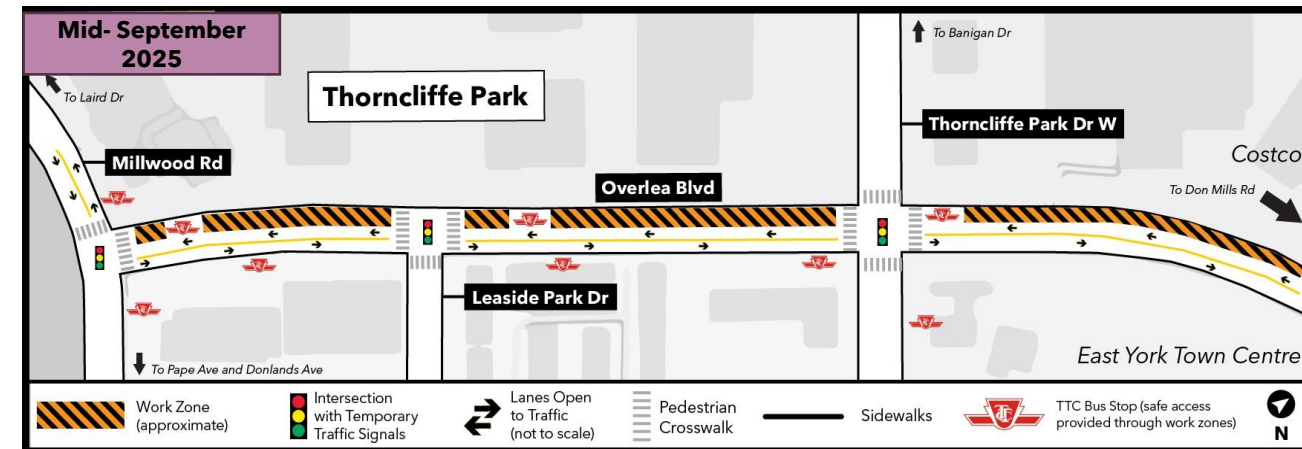
## Overlea Boulevard traffic staging

- Closures on the south side of Overlea Boulevard are in place until mid-September (Stage 2).
- Work will shift to the north side of Overlea Boulevard (Stage 3) in mid-September after Stage 2 is completed.
- The closures on Overlea Boulevard are required to facilitate road restoration, streetlight installation, and remaining wet utility work.
- Paid Duty Officers (PDOs) to be onsite as needed to assist with traffic movement.
- Left and right turns are maintained at intersections between Millwood Road and Thorncliffe Park Drive when possible.

South side Overlea Boulevard (Stage 2)



North side Overlea Boulevard (Stage 3)





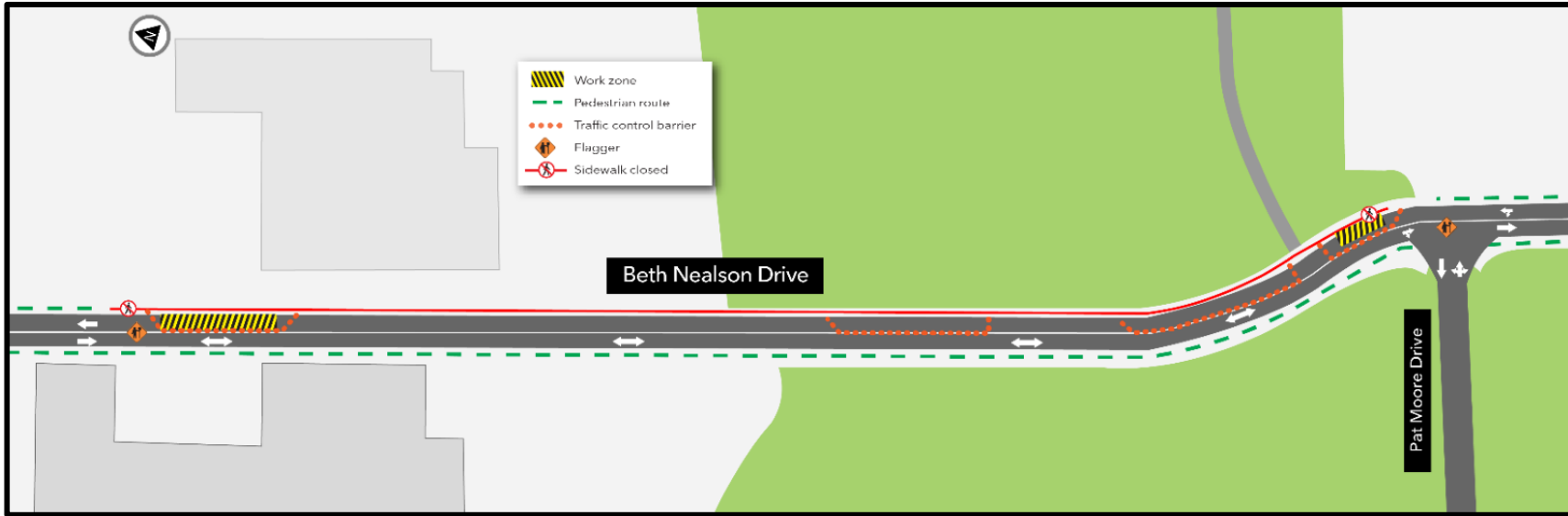
# Banigan Drive Building Demolition

- Demolition of properties on Banigan Drive will begin in September 2025.
- Abatement work and internal building demolition will be the first task completed.
- Currently, hoarding has been installed around the demolition site to mitigate noise and dust, and to provide a protective barrier between the site and the public.
- Additional noise, vibration and air quality monitors are in place gathering baseline information prior to demolition works starting.
- Water trucks will be used as needed to suppress any dust created by the demolition.
- This work will take place on weekdays between 7 a.m. – 5 p.m.
- Demolition work will continue for approximately three months.





# Beth Nealson Drive utility relocations - ongoing to December 2025



## Bell

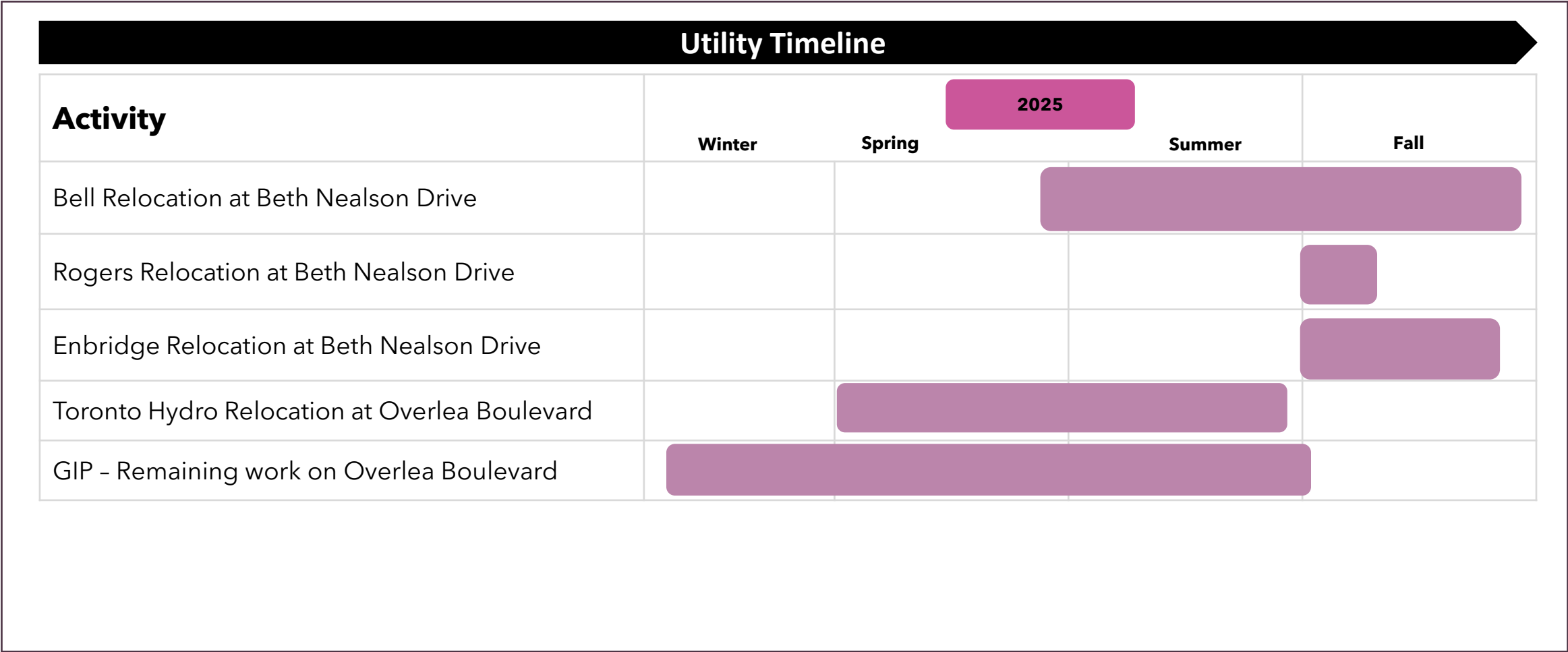
- Direction drill work has been completed, chamber builds have been completed, and cable installations work commenced.
- Civil works completed in early August.
- Cabling and splicing commenced, we do not expect major road closures with minimal intrusive work.

## Enbridge

- Enbridge received permit approvals to occupy the area, target date is September/October.
- Enbridge is expected to work day shifts to carry out the relocations.



# Utility Work timeline - 2025





## Emergency vehicle access mitigations

- Emergency vehicles and dispatch are notified of our current works and traffic staging through the City Road Disruption Activity Reporting System (RoDARS) portal.
- Emergency vehicles can utilize the GIP workzone as needed to pass through the Overlea Boulevard construction area.
- Paid Duty Officers (PDOs) are positioned at Leaside Park Drive and Thorncliffe Park Drive. These officers are equipped with radios to coordinate traffic.
- GIP Crews are also equipped with radios to coordinate traffic as needed, to enable emergency vehicles to pass through our sites.
- Metrolinx had requested Toronto Fire Service (TFS) to review the current staging to identify any potential concerns.
- On Tuesday August 26th, 2025 the TFS District Chief and supporting staff drove through our site in both directions. There were no major concerns raised which would overcomplicate a response to an emergency.



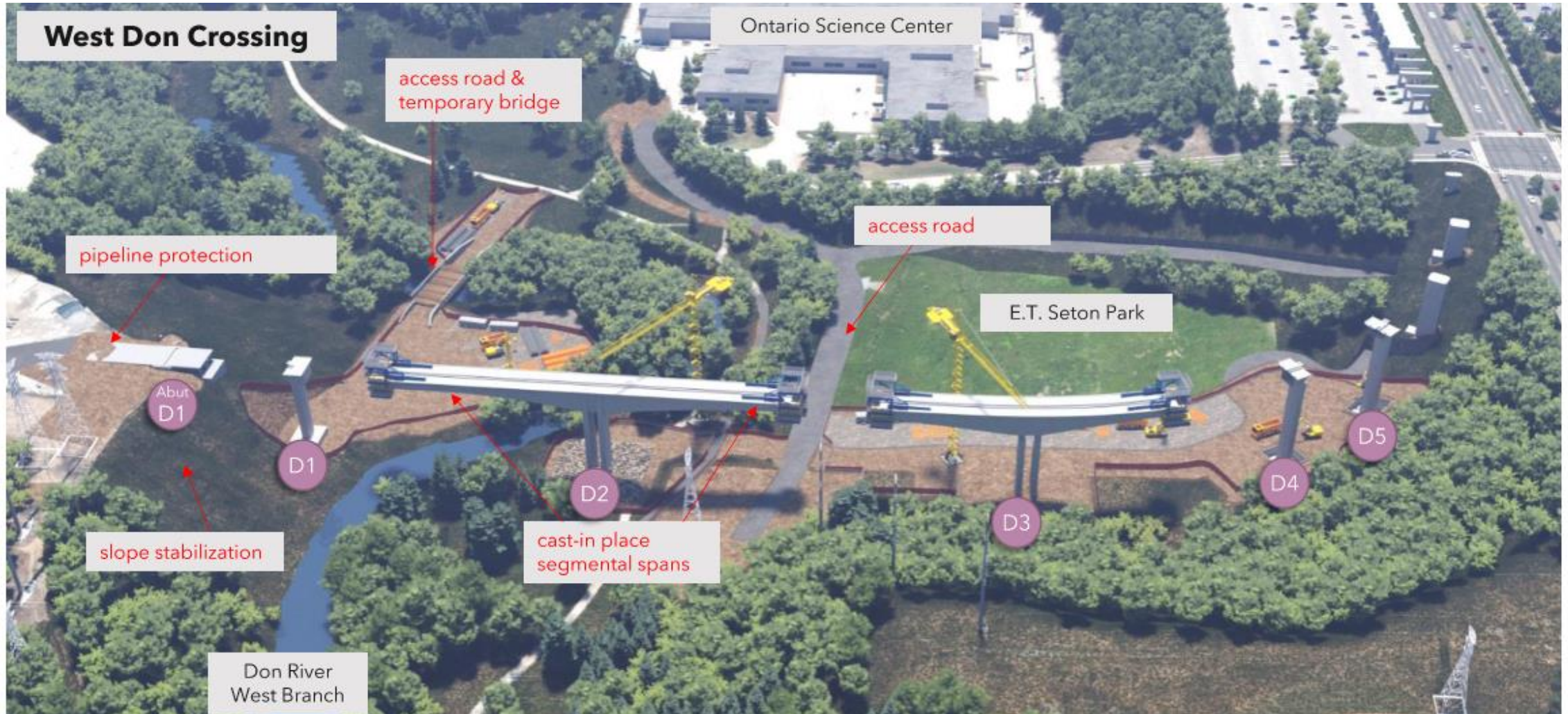
PDO positioned at the Overlea Boulevard intersection of Millwood Road.



# West Don Crossing Works



# West Don Crossing - Overview





## West Don Crossing - July to August progress

### Completed work:

- Backfilled pier D3 pile cap and extended crane pad towards D2
- Stripped vegetation from the D1 slope
- Toe berm construction completed
- Benching of slope (phase excavation to create a series of steps) to accommodate the installation of soil anchors
- Installed grout tubes and centralizers on the soil anchors

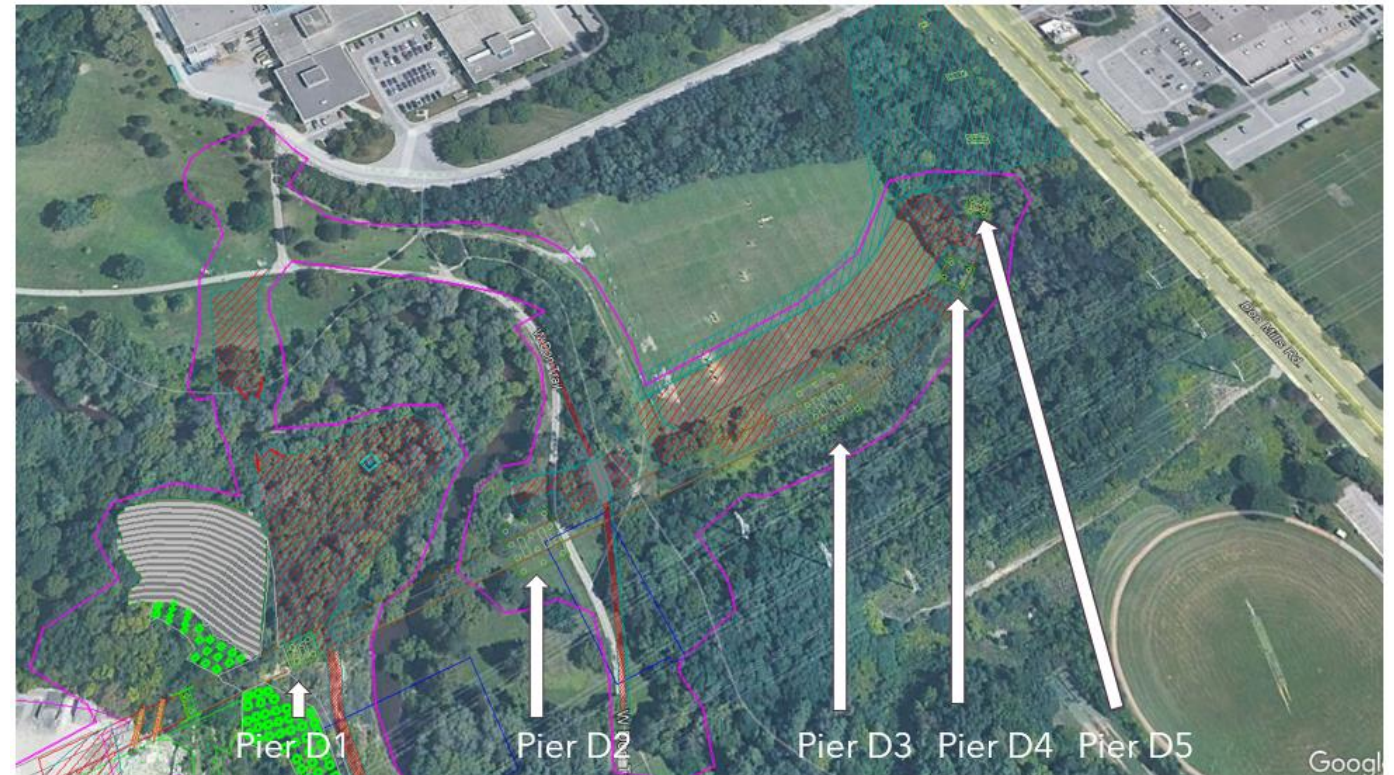




## West Don Crossing - July to August progress

### Ongoing and new work:

- Drilling and grouting of the soil anchors has commenced
- Concrete pours have occurred for the pier foundations at piers D3, D4, and D5
- Excavation and rebar installation for the pier foundations at Pier D2 has started





# Eight week look-ahead: August 28 to October 23, 2025

#	Activity	Location	Expected Start	Expected Duration	Impact	Hours of Work	Mitigations
1	Pier foundation works at Pier D2 (Ongoing) & D4 (Completed)	West Don Crossing	Ongoing	2 Months	Vibration, noise, air quality	7:00 am 7:00 pm	Vibration monitoring, noise monitoring, air quality monitoring
2	Soil Nailing & Anchor		July (Ongoing)	6 months		7:00 am 5:30 pm	
3	Backfilling Pier Caps		July (Ongoing)	2 months		7:00 am 5:30 pm	



# **Beth Nealsen**

# **Underpass Works**



## Beth Nealson underpass - July to August progress

- Excavation continues east of Beth Nealson Drive.
- Caisson drilling has commenced on the west side of Beth Nealson Drive, with more caisson piles to be drilled which should be completed by end of August.
- The piles will support the safe excavation on Beth Nealson Drive and the eventual construction of a retaining wall for the underpass structure.
- Traffic Control Persons are on site to direct vehicles and construction equipment safely in and out of the construction site.
- The existing storage dome on the property has been demolished, and a new temporary storage dome has been erected.
- The original structure was in the way of the eventual tracks to be installed and had to be removed. The new structure provides a safe location to store equipment and materials away from the elements.





# Eight Week Look-Ahead: August 28 to October 23, 2025

#	Activity	Location	Expected Start	Expected Duration	Impact	Hours of Work	Mitigations
1	Excavation for track retaining wall	Beth Nealson Underpass	May (Ongoing)	4 months	Vibration, noise, air quality	7:00 am 5:30 pm	Vibration monitoring, noise monitoring, air quality monitoring
2	Drilling and caisson installation for West Wall	Beth Nealson Underpass	Mid-July (Ongoing)	3 months	Vibration, noise, air quality	7:00 am 5:30 pm	Vibration monitoring, noise monitoring, air quality monitoring



# **Don Valley Crossing Construction Updates**



# Don Valley Crossing - Overview





## Don Valley Crossing – July to August progress

- Piling at Pier A4 has been completed. Excavation, mud slab preparation, and concrete chipping activities are now underway.
- Slope stabilization at Pier A3 continues, with soil nail drilling, rebar installation, and shotcrete application progressing across Zones 3, 4, and 5.
- At Pier A2, formwork installation and rebar placement are in progress in preparation for the pile cap pour.
- Temporary bridge operations have commenced, with piles driven on both sides of the river. Abutment construction is now underway.
- Traffic control measures have been implemented to support ongoing operations, including a lane closure on Millwood Road to facilitate safe access around the Don Valley Crossing work zones.



Don Valley Crossings Piers A2 and A3 work areas  
July 24, 2025





## Eight week look-ahead: August 28 to October 23, 2025

#	Activity	Location	Expected Start	Expected Duration	Impact	Hours of Work	Mitigations
1	Slope Stabilization	Don Valley Crossing (Pier A3)	January 2025	7-8 Months (to August 2025)	Noise, Vibration, Air Quality	7:00 am 5:30 pm	Monitoring noise and air quality levels.  Enacting noise mitigation controls and dust suppression as required.
2	Pier Piling	Don Valley Crossing (Pier A4)	July 2025	Two months	Noise, Vibration, Air Quality	7:00 am 8:00 pm	
3	Temporary bridge installation	Don Valley Crossing (Pier A1)	July 2025	Two months	Noise, Vibration, Air Quality	7:00 am 5:30 pm	
4	Access road construction	Don Valley Crossing (Pier A1)	August 2025	Two months	Noise, Vibration, Air Quality	7:00 am 5:30 pm	
5	Pile Cap	Don Valley Crossing (Pier A2)	July 2025	Two months	Noise, Vibration, Air Quality	7:00 am 5:30 pm	
6	HONI Line Crossing	Don Valley Crossing (Pier A5)	July 2025	One month	Noise, Vibration, Air Quality	7:00 am 5:30 pm	



# **Elevated Guideway and Station Works**



## 4D illustration of Thorncliffe Park Station and elevated guideway construction along Overlea Blvd.





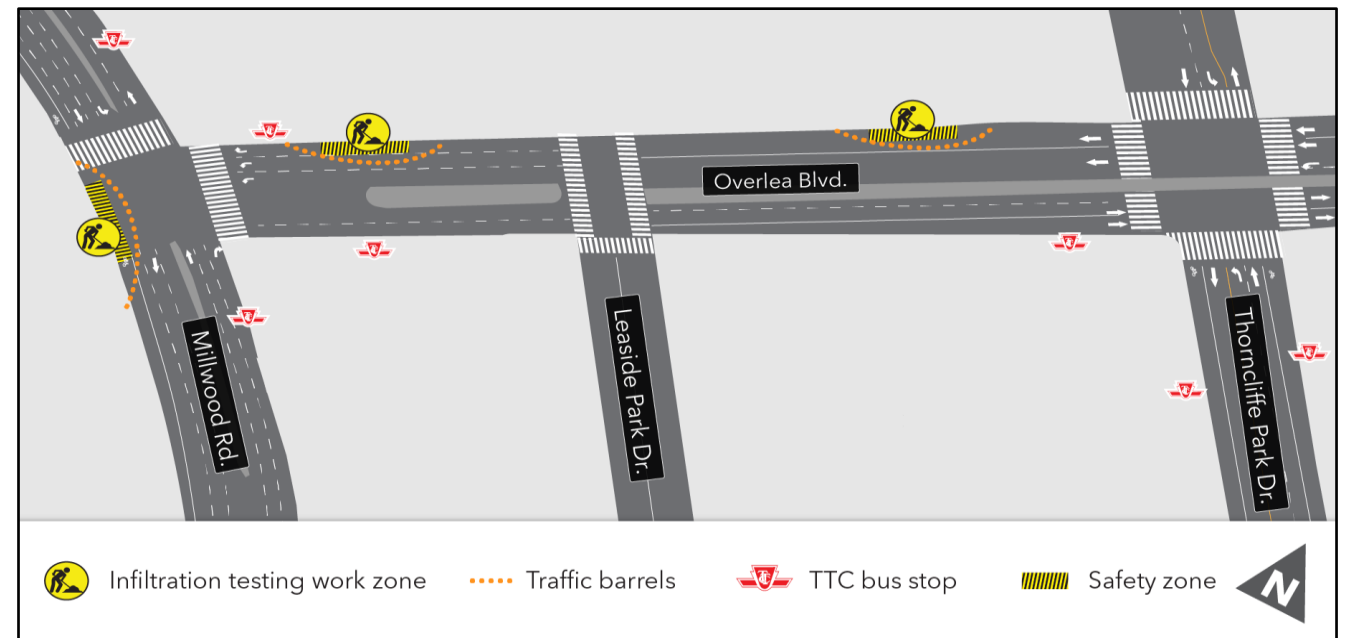
# Upcoming works

## Investigative work along Overlea Blvd. and Millwood Rd.

- Starting as early as September 2025, crews will conduct infiltration test drilling along Overlea Blvd. and Millwood Rd.
- This work is being done in coordination with advanced works to minimize disruption.
- An infiltration test involves drilling a hole, placing a permeameter to measure how easily water flows through soil, and recording the water in the native soil at the bottom.
- Results will inform the final drainage design for the Ontario Line elevated guideway.
- Work will take about two weeks, Monday to Friday, from 7:00 a.m. to 7:00 p.m.

### What are the impacts?

- Driveway access will be maintained.
- Traffic lanes and sidewalks may be temporarily impacted but will be restored daily.
- Crews will use a drill rig, hydrovac, and other survey equipment to gather data.
- Noise and vibration will be monitored to ensure acceptable levels are maintained.



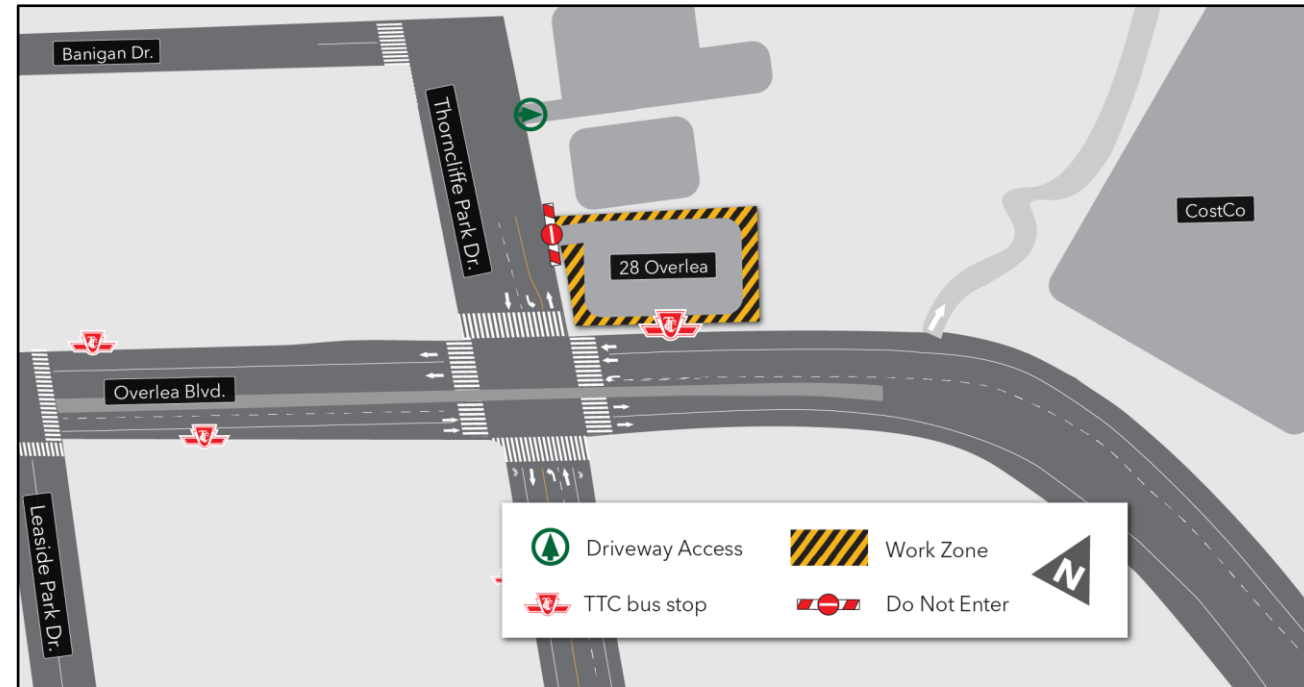


## Demolition of 28 Overlea Blvd.

- As early as September 8, 2025, crews will begin demolishing the building at 28 Overlea Blvd., located at the northeast corner of Overlea Blvd. and Thorncliffe Park Dr.
- Activities include disconnecting underground utilities (water, gas, hydro), removing the existing structure, and then backfilling, grading, and securing the site.
- Work is expected to take approximately two months, Monday to Friday, 7:00 a.m. to 7:00 p.m.

### What are the impacts?

- Noise, dust, and vibration from construction equipment (trucks, excavators, crushers, skid steer loaders).
- All equipment will remain within a fenced and secured work area.
- No traffic, sidewalk, or transit impacts.





# Site Preparation for Thorncliffe Park Station and Guideway Construction

## Site mobilization: Grading and fence installation

- Site preparation for Thorncliffe Park Station and the elevated guideway will begin as early as September 30, 2025:
  - Work will take place in front of 2, 14, 16 and 20 Overlea Blvd.; 4, 7 and 11 Banigan Dr.
- Work will include installing construction fencing, clearing and grubbing, tree removals, and grading the site.

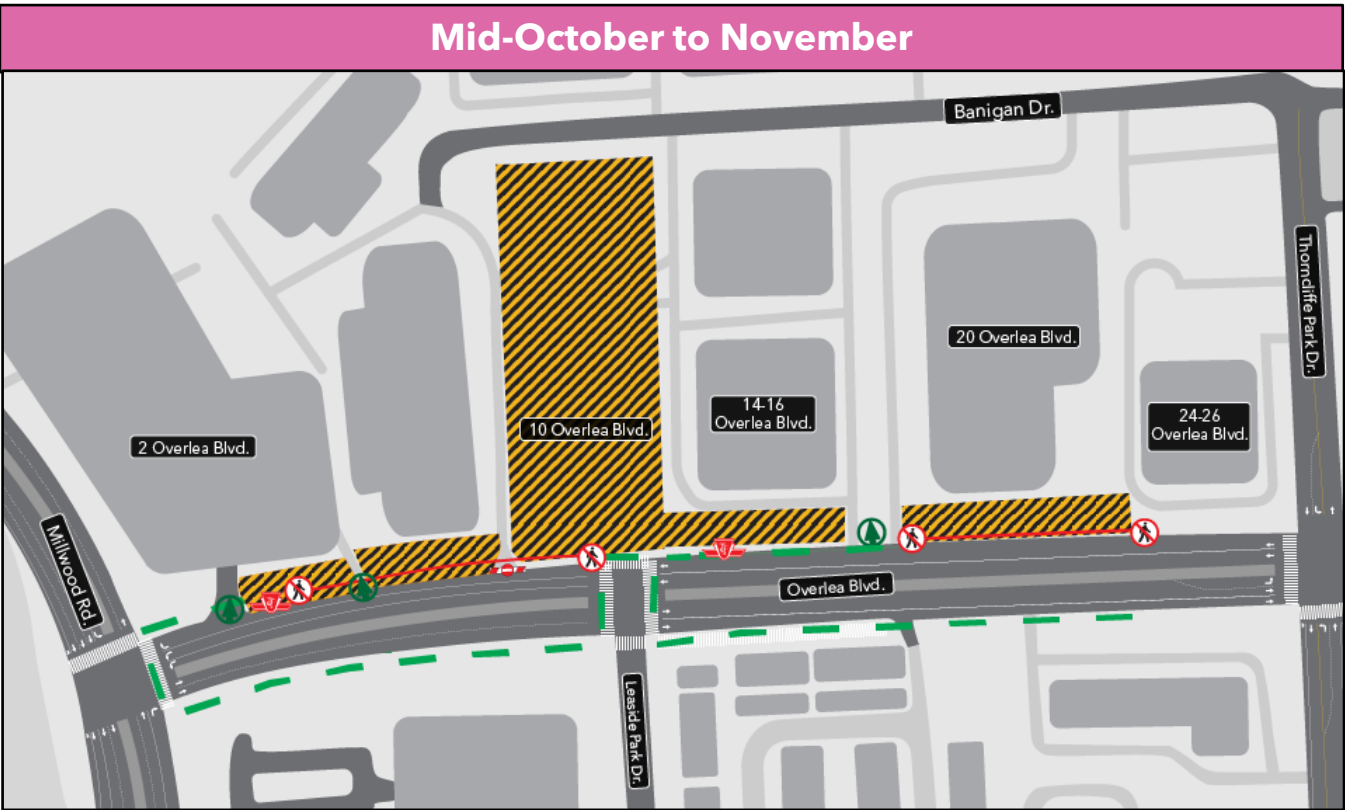
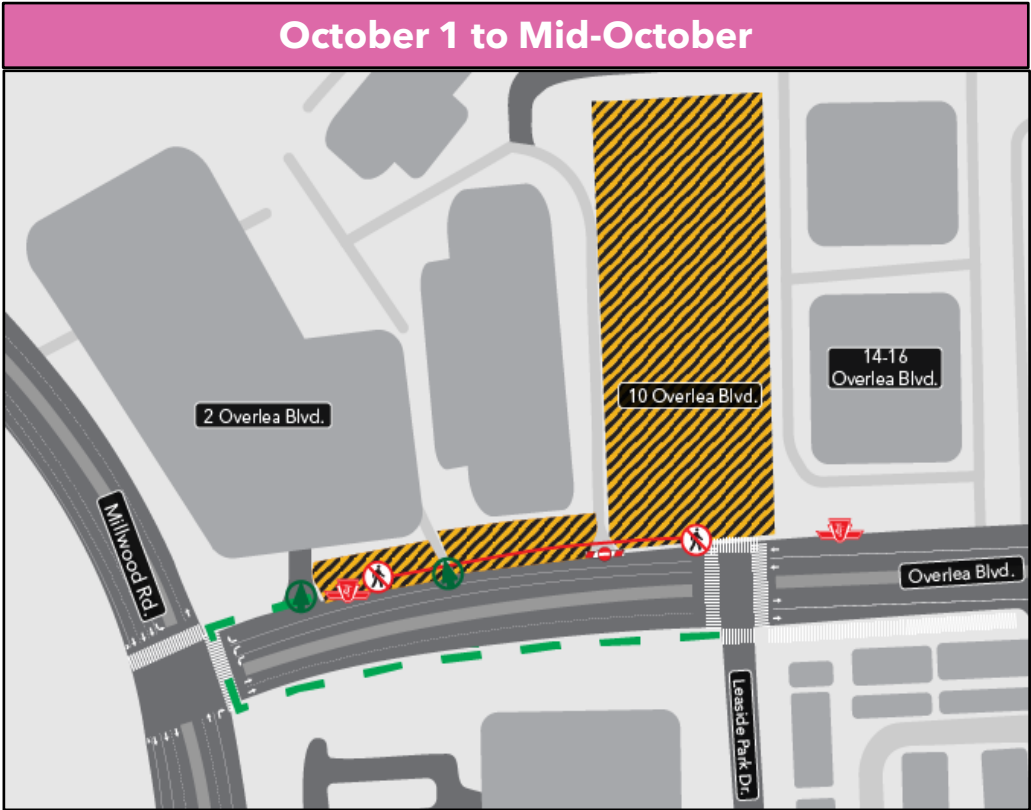
## Traffic staging: Tree removals, fencing and sidewalk closure

- Starting early October 2025, the north sidewalk on Overlea Blvd. will be closed between Millwood Rd. and Thorncliffe Park Dr.
- The bus stops along Overlea Blvd. will be maintained.
- Pedestrians will be diverted to the south sidewalk.
- Advance signage will guide pedestrians, cyclists, and drivers.



Elevated guideway from Pat Moore Drive to Thorncliffe Park Station looking south.





\*Pedestrian access into 2, 14,16, 20 Overlea Blvd. will be maintained.

 Driveway Access	 Work Zone	 Closed Sidewalk
 TTC bus stop	 Do Not Enter	 Pedestrian Detour





# Upcoming Construction Impacts



# Eight-Week Lookahead - August 28 to October 23, 2025

#	Activity	Location	Expected Start	Expected Duration	Impact	Hours of Work	Mitigations
1.	Investigative drilling	Overlea Boulevard & Millwood Road.	September 2025	Two weeks	Minimal noise and dust	Daytime, 7 a.m. – 7 p.m.	Vibration, noise and air quality monitoring. Hoarding and/or screening on fencing will be used to minimize dust.
2.	Building demolition	28 Overlea Boulevard.	Mid-September, 2025	Until November 2025	Vibration, noise, and dust	Daytime, 7 a.m. – 7 p.m	Vibration, noise and air quality monitoring. Demolition activities will only occur during daytime work hours. Hoarding and/or screening on fencing will be used to minimize dust.
3.	Site laydown and preparation	Thorncliffe Park Station & Elevated Guideway	September 30, 2025	Until December 2025	Vibration, noise and dust	Daytime, 7 a.m. – 7 p.m	Hoarding will be installed to safely separate construction activities. Vibration, noise and air quality monitoring.



# 2025 Construction Lookahead

Date	Activity	Location	Details & Purpose
Summer	Investigative Drilling	Overlea Boulevard & Millwood Road.	Infiltration tests will measure soil water levels and finalize drainage design for the elevated guideway.
	Demolition of 28 Overlea Blvd.	Overlea Boulevard.	28 Overlea Blvd. demolition required to clear area for the elevated guideway and Thorncliffe Park Station construction.
Fall	Site Laydown & Preparation	Overlea Boulevard.	Site laydown preparation includes installing trailers, site offices and facilities, access roads and hoarding required to facilitate the construction of Thorncliffe Park Station and the elevated guideway.  EGS laydown areas are: 10 Overlea Blvd., 26 Overlea Blvd., 28 Overlea Blvd., and 6 Thorncliffe Park Dr.  Installation of slurry tanks at 10 Overlea Blvd. and installation of pipes to pile locations.  Installation of fencing and hoarding in front of 2 Overlea Blvd. as part of site preparation for elevated guideway piling.
	Tree and vegetation removals	Overlea Boulevard.	Trees and vegetation will be cleared along the north side of Overlea Blvd. from Millwood Dr. to 42 Overlea Blvd. (Costco) to create a work area for construction of the elevated guideway and Thorncliffe Park Station construction.
	Start elevated guideway construction	Overlea Boulevard.	Construction of the elevated guideway, beginning with drilling for the piles that will support the elevated guideway. Once the piles are drilled, rebar and concrete will be installed.



# Action Log



# Action Log

#	Questions Asked / Action Item	Response/Resolution	Due Date / Status
1	Metrolinx to present on traffic impact and mitigation plans for construction in Thorncliffe Park.	<ul style="list-style-type: none"><li>Metrolinx to present at the May CLC meeting for Thorncliffe Park.</li></ul>	Completed
2	Metrolinx to share details of guideway construction process.	<ul style="list-style-type: none"><li>Metrolinx to present more detail on the guideway construction process.</li></ul>	Completed
3	Metrolinx to organize a restoration walk.	<ul style="list-style-type: none"><li>On May 24, Metrolinx carried out a restoration walk with residents at Evergreen Brick Works.</li></ul>	Completed



# Discussion



# Contact Us

**Metrolinx will keep the community, residents and businesses informed by providing project updates, seeking input and feedback, and addressing questions and concerns effectively and quickly.**

## Stay connected:

Ontario Line e-newsletter @ [Metrolinx.com/OntarioLine](https://www.metroslinx.com/OntarioLine)

## Events:

Open House on October 2, 2025 at the Metrolinx Community Office.

## Next CLC:

September 25, 2025

## Questions or comments:

[OntarioLine@metrolinx.com](mailto:OntarioLine@metrolinx.com)

24/7 call 416-202-5100

## Follow us on social media:

X / Facebook / Instagram @ OntarioLine



## Visit Us:

East York Town Centre

45 Overlea Blvd., Toronto, ON M4H 1C3

Unit 153 (across from the Rogers store)

Monday to Friday: 9 a.m. to 5 p.m.