

Union Station Enhancement Project

Major Landowners / Tenants Meeting

September 10, 2025



LAND ACKNOWLEDGEMENT

Metrolinx acknowledges that we connect communities by building and operating transit within the traditional lands of the Anishinaabe, the Haudenosaunee and the Wendat peoples, for whom these lands continue to have great importance.

Treaties between First Nations and governments cover these lands, and the promises contained in these Treaties remain relevant to this day.

Metrolinx and its employees are committed to understanding the history of these lands and the continued impacts of colonization and take responsibility for actions to advance reconciliation.

Metrolinx will continue to seek the knowledge, expertise and experience of Indigenous partners and commits to doing business in a manner that is built on a foundation of trust, respect, and collaboration.

ALLIANCE CHARTER

UNION STATION ENHANCEMENT PROJECT



**ONTrack Alliance
commits to courageously
transform how projects
are delivered through
trust and collaboration.**

AGENDA

1 UNION STATION ENHANCEMENT PROJECT (USEP) OVERVIEW

2 CONSTRUCTION UPDATES

3 CUSTOMER UPDATES

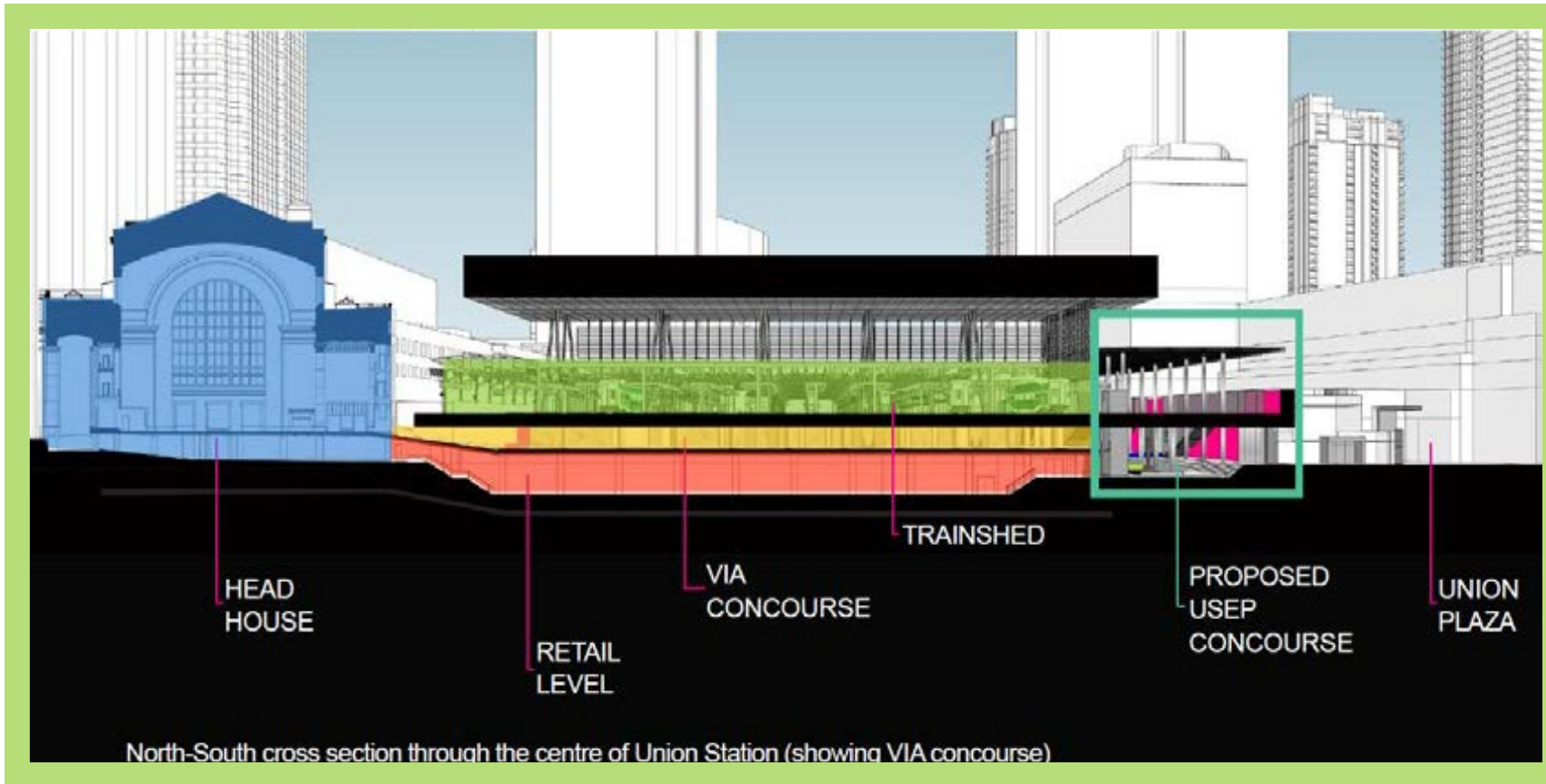
4 NEXT STEPS

Your Key OnTrack Alliance Contacts:

- Sarah Jayne Swan, Project Coordinator, Stakeholder & Communications, ONTrack Alliance, sarah-jayne.swan@wsp.com
- Josh Speedie, Communications Manager, ONTrack Alliance, Joshua.Speedie@wsp.com
- James Burchell, Advisor, Community Engagement and Issues Manager, Metrolinx james.burchell@metrolinx.com

USEP PROJECT OVERVIEW

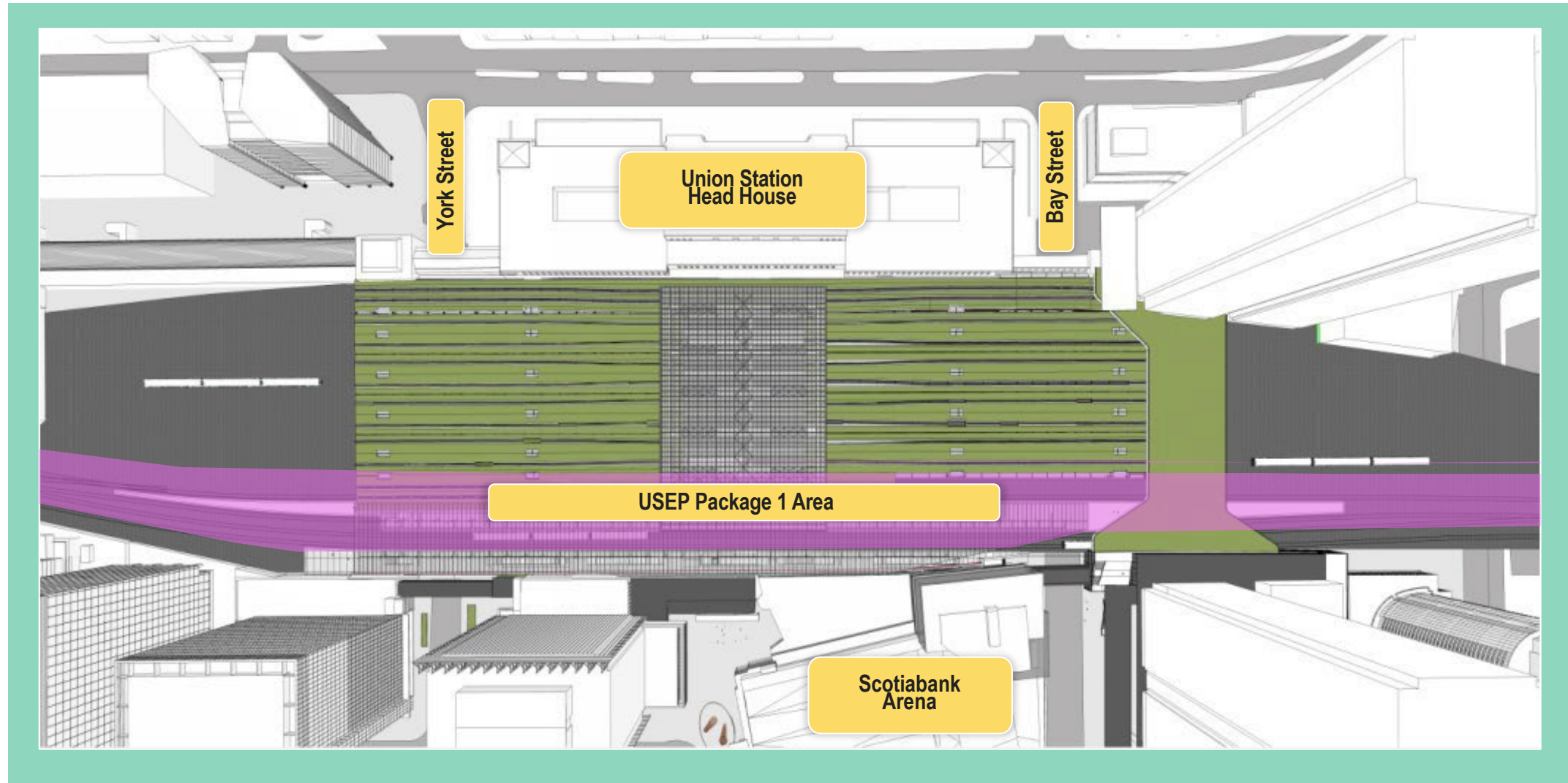
GO EXPANSION ENABLING WORKS



The Union Station Enhancement Project (USEP) is a GO Expansion Enabling Works project that is required in advance of the On-Corridor Works project in order to facilitate future track closures for the reconstruction of platforms within the existing trainshed, and to optimize the overall On-Corridor Works construction schedule.

The USEP is required in addition to the rehabilitation and upgrades already completed or near completion at Union Station.

UNION STATION ENHANCEMENT PROJECT



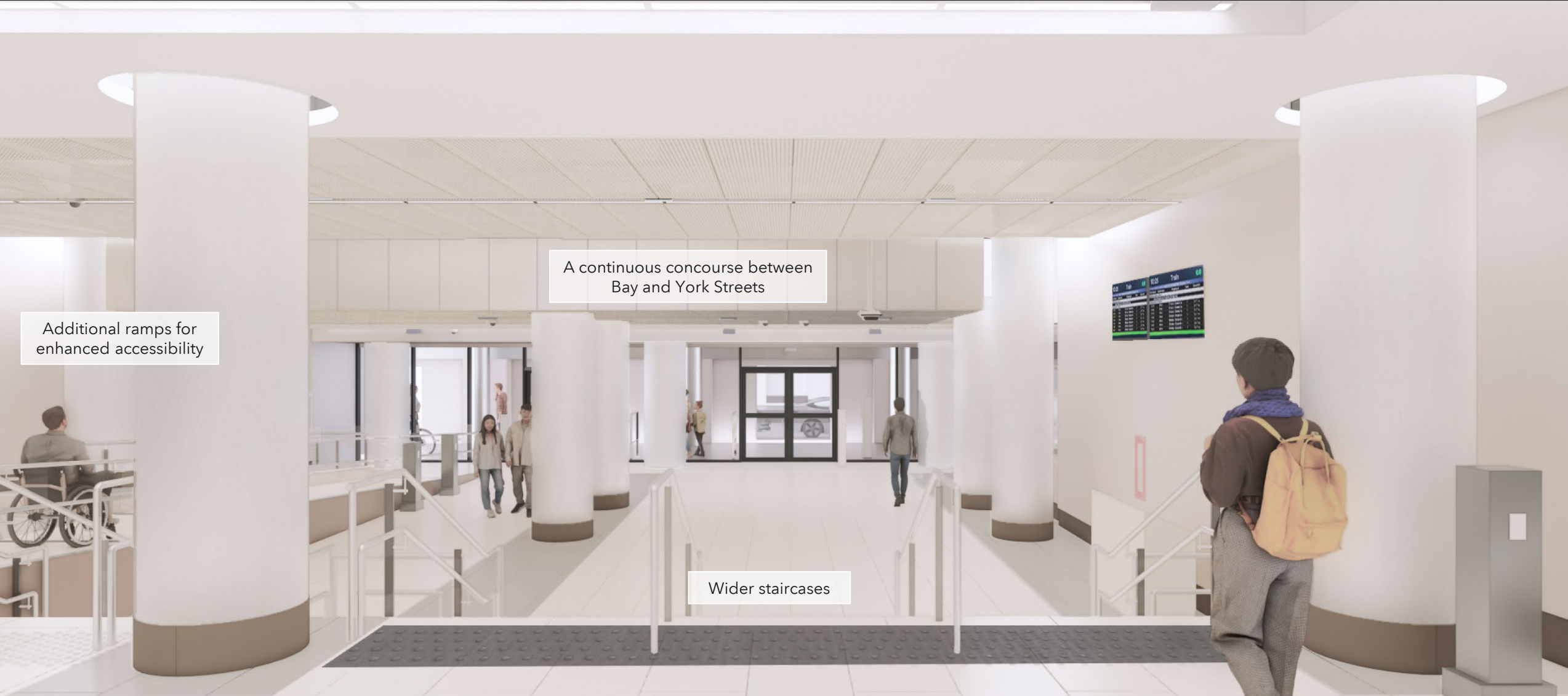
CONCEPTUAL RENDERINGS



Artists rendering. Design subject to change.

Figure: Conceptual rendering of continuous concourse from York Street to Bay Street

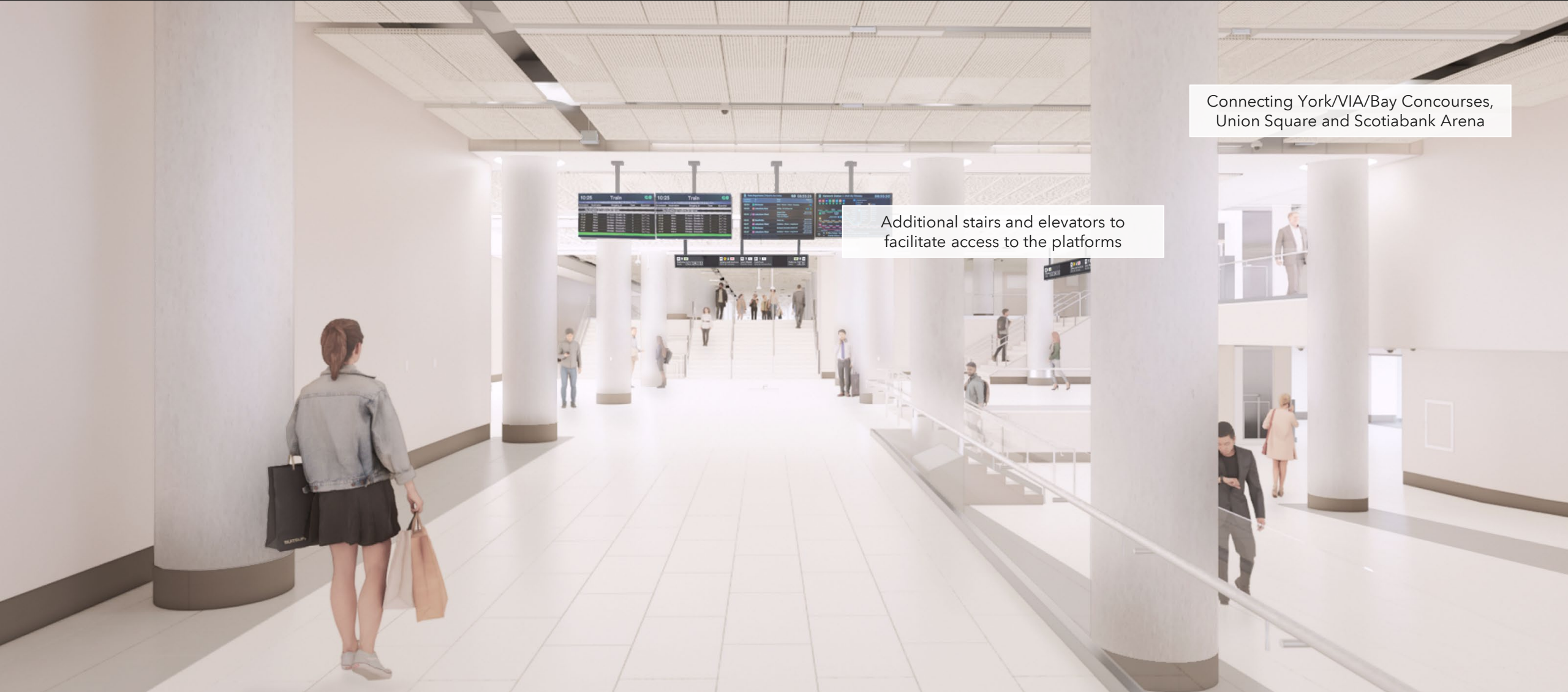
CONCEPTUAL RENDERINGS



CONCEPTUAL RENDERINGS



CONCEPTUAL RENDERINGS



Connecting York/VIA/Bay Concourses,
Union Square and Scotiabank Arena

Additional stairs and elevators to
facilitate access to the platforms

CONSTRUCTION UPDATES

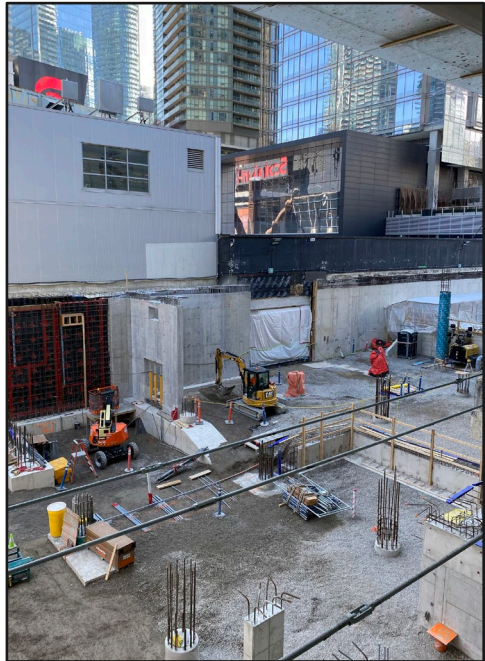
UNION STATION ENHANCEMENT PROJECT CONSTRUCTION

- Demolition, Foundation, Concourse and Track Level Activity - Phasing
 - Progress of demolition, foundation, concourse and track level updates across Areas A - J.
- Customer Communications
- Next Steps



TRACK LEVEL - PROGRESS

Areas F (south east facing)



March, 2025



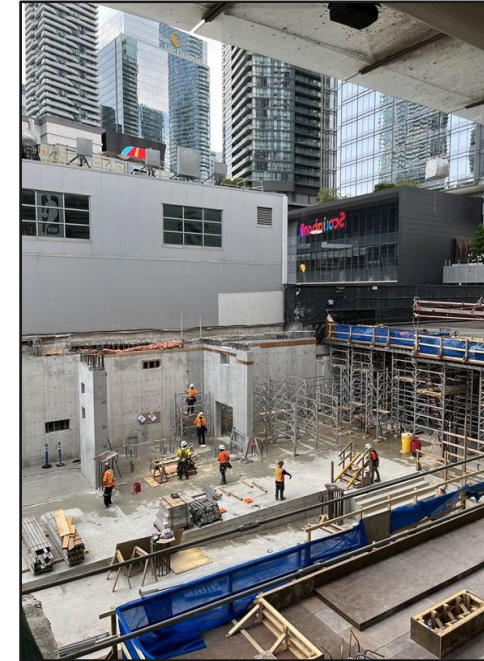
April 2025



June 2025



July, 2025



August, 2025

TRACK LEVEL - WEST OF YORK ST (AREA A)

- Hand chipping of abutment footing complete
- Trailers moved in along the south crash wall
- Caisson excavations complete
- Area is being prepared for micropiles
- West laydown clean up ongoing

Next steps:

- Prep work for abutment footing wall, backfilling to grade, pouring north wall, underground plumbing and electrical

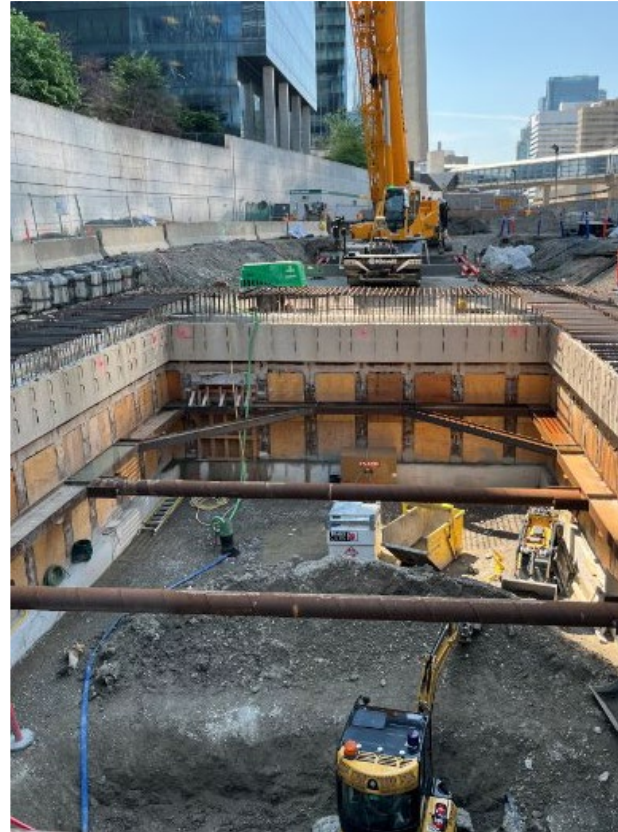
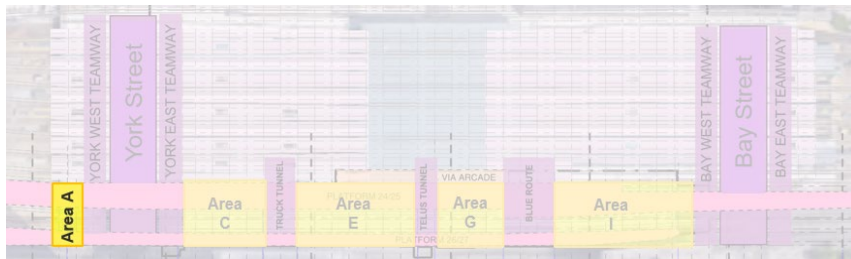


Photo: Area A
(west facing)
July 2025



Photo: Area A
(west facing)
August 2025

TRACK LEVEL - YORK STREET TEAMWAYS (AREA B)

Enwave Scope

- Ongoing until September 8, 2025.
- Full closure of the south side of the YWT until September 15, 2025
- Pedestrians re-routed to sidewalk outside of the teamway.

Next Steps:

- Work on chill water pipe, electrical relocations



Photo: YWT Large opening into Area A



TRACK LEVEL - EAST OF YORK ST (AREA C)

- Fit-out of this area is ongoing
- Block wall installation, electrical hangers and dewatering

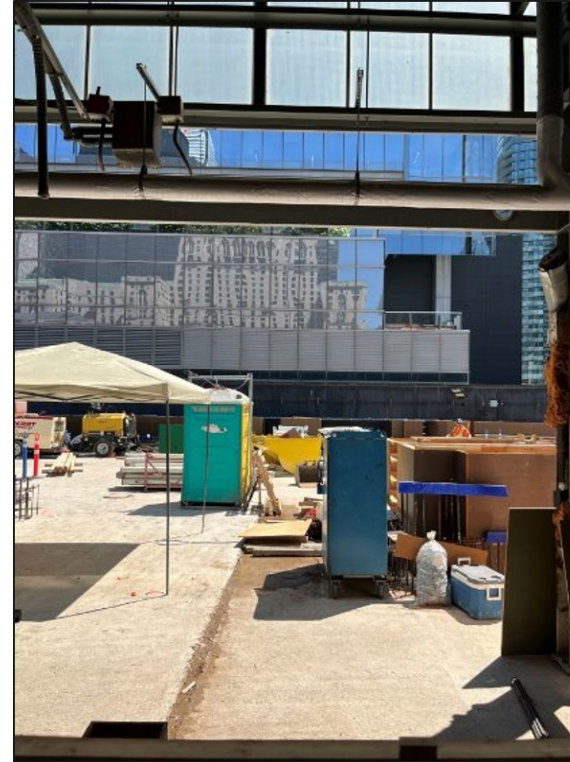
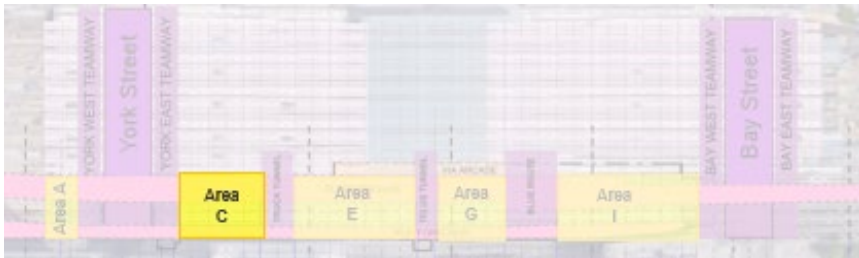


Photo: Area C July 2025

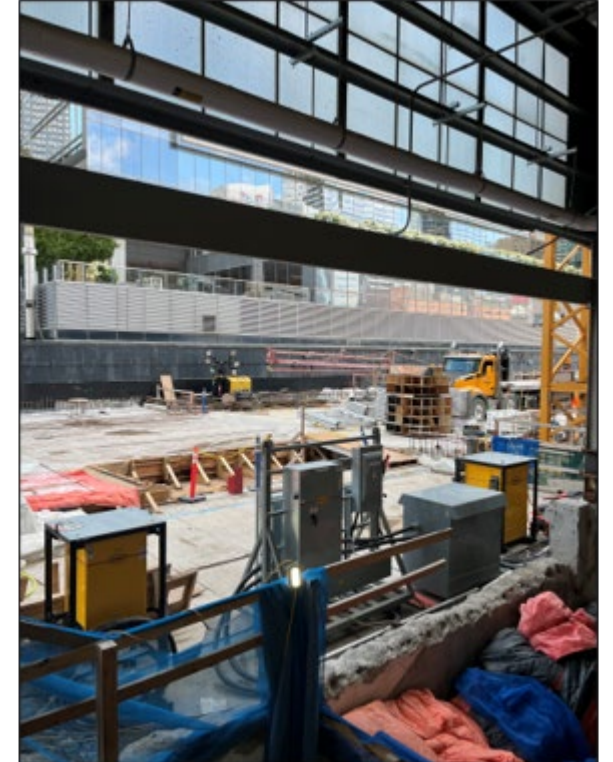


Photo: Area C August 2025

TRUCK TUNNEL (AREA D)

- Concrete curing complete
- Soffit installation is complete
- Formwork stripping
- Repair of North Beam
- Chipping at South Beam

South Flare Man Door Opening

- Coordinating with Stakeholders for concrete pour



Photo: Area D, July 2025

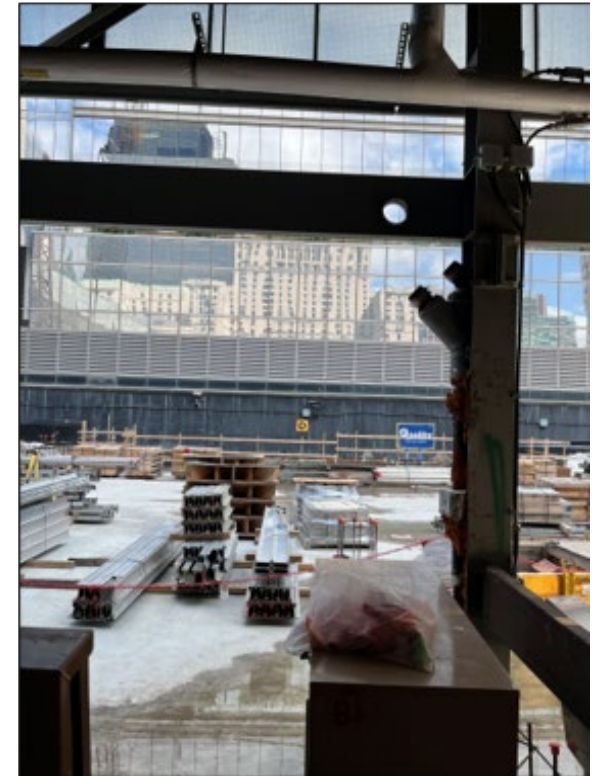


Photo: Area D, August 2025

TRUCK TUNNEL (AREA D)



Looking towards Area C
(concourse level)



July 2025



August 2025



August 2025



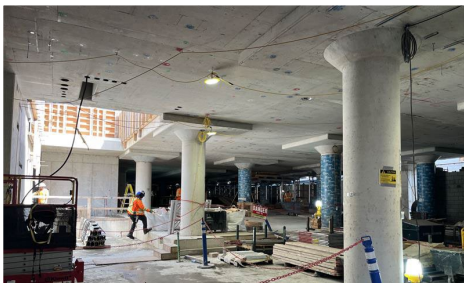
Looking towards Area D
(concourse level)



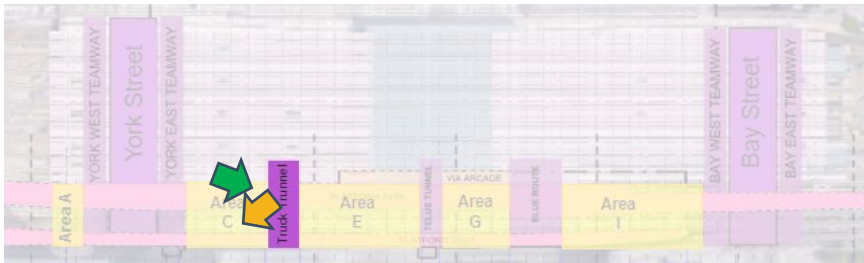
July 2025



August 2025



August 2025



TRACK LEVEL - AREA E

- Scanning of the rebar in the signal bunker is ongoing
- Continuing 1929 wall repairs
- Chipping of the atrium is ongoing
- Track pour on August 18 completed

Next steps: Capital formwork, mechanical and electrical anchor and hanger inserts

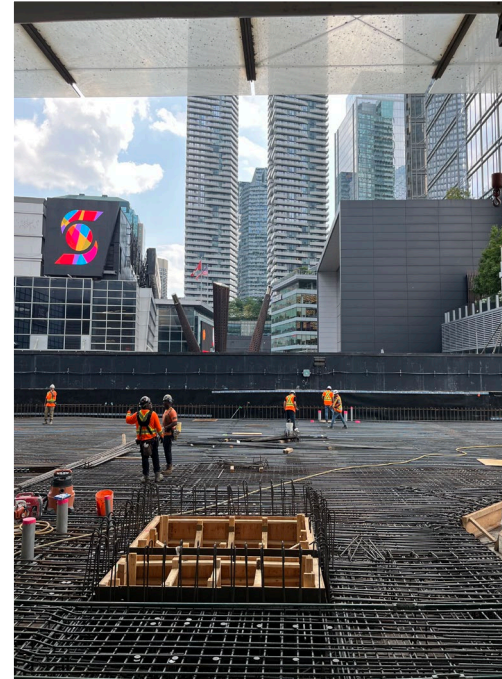


Photo: Prepping for Track Slab Pour, July 2025

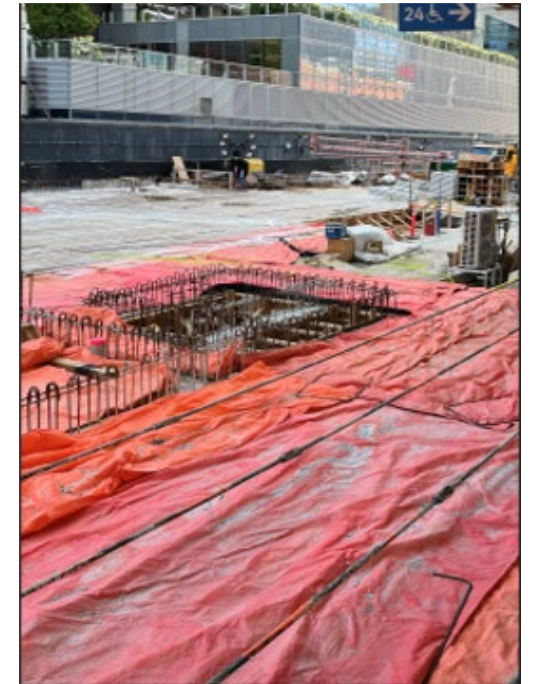


Photo: Track Slab Poured, August 2025

TRACK LEVEL - AREAS F/G

South Side

- Track 2 and 3 poured
- Stripping of Track 2 and 3 ongoing

Next Steps:

- Micropile installations west of the blue route in the coming weeks

North Side

- Shoring and soffit installation for track 4 is ongoing
- Chipping on the atrium supports is ongoing

Next Steps: Clearing the area for concrete pour

Mechanical Room 2

- Chipping and formwork is ongoing

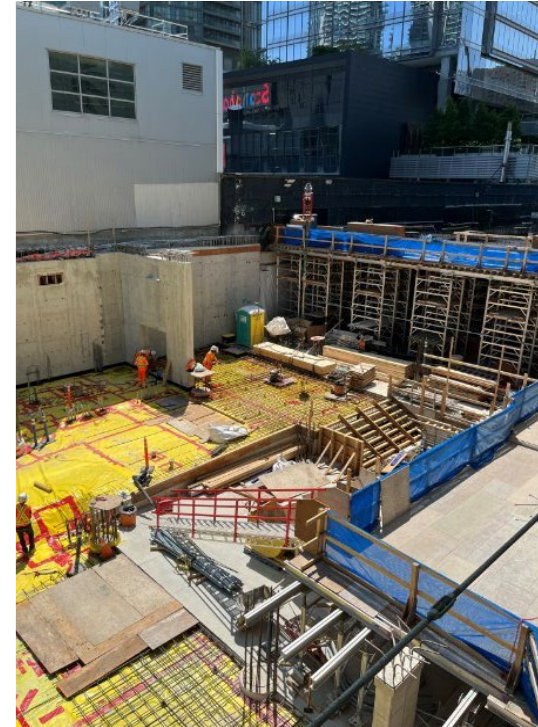


Photo: Area F/G - Shoring & Waterproofing
July 2025

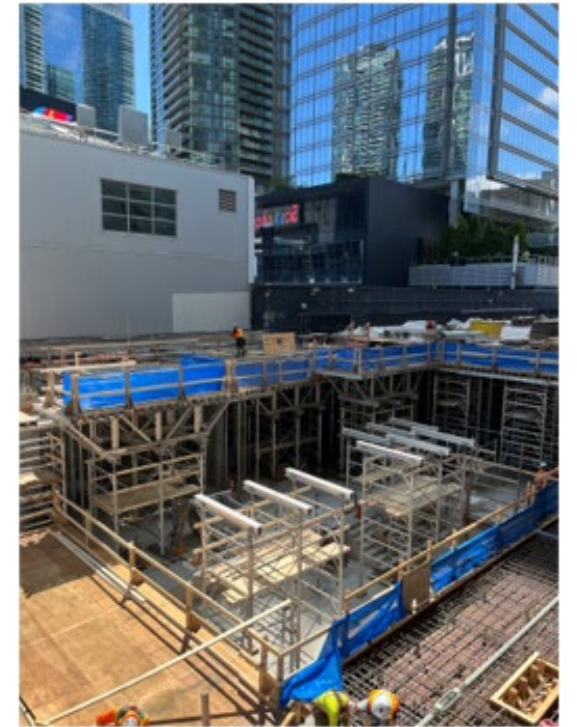


Photo: Area F/G - Shoring installation
August 2025

TRACK LEVEL - BLUE ROUTE

Area H

- Design and work plan discussions are underway, site visits and investigations ongoing
- Caisson excavations ongoing

Electrical Relocations (120V)

- Complete

Blue Route Investigations

- Design and work plan discussions are underway



Photo: Blue Route openings on the West Wall, July 2025



Photo: Blue Route openings on the West Wall, August 2025

BAY ARCADE - BLUE ROUTE

Purpose: To build a temporary ramp for future relocation of Telus Ramp.

Background:

- Bay Arcade temporary ramp hoarding is complete on the North side.
- Next steps: Continuing construction of temporary ramp within hoarding.



Photo: Hoarding (looking east in the Bay Arcade)
July 2025

TRACK LEVEL - AREA I/J

Area I

- Pile cap installations are underway across the area
 - Waterproofing ongoing
 - Formwork for columns ongoing
 - Demo of caisson ongoing
 - Mechanical Room 3: waterproofing the walls
- Next steps: Electrical conduits in Mech room 3

Area J

Next steps: Formwork and rebar for the pilecaps

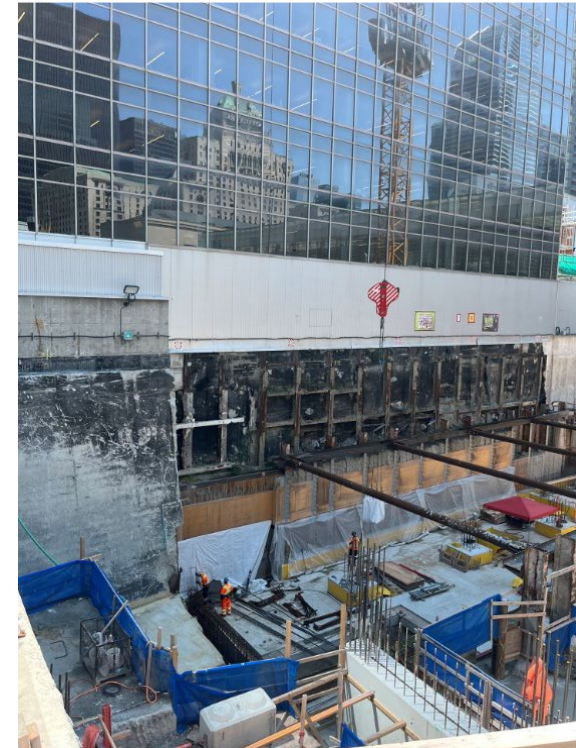
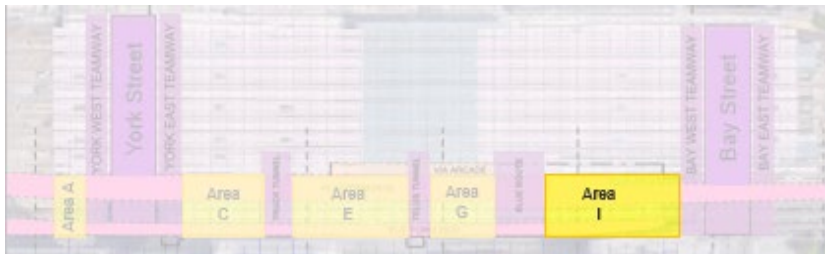


Photo: Area I / J, July 2025



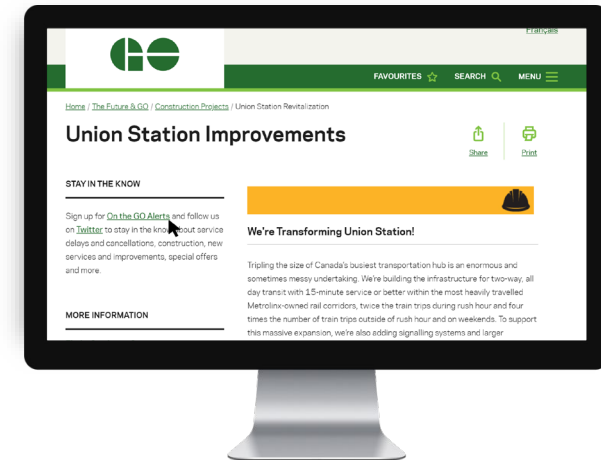
Photo: Area I / J, August 2025

CUSTOMER UPDATES

ENWAVE

- South section of York West Teamway closure (continuing until September 15, 2025)

Construction updates posted on the web at:
[Union Station Improvements](#)
Register for [On the GO alerts](#) to stay in the know



NEXT STEPS

PROJECT CONTACT INFO

Contacts:

Sarah Jayne Swan, Project Coordinator, Stakeholder & Communications, ONTrack Alliance
sarah-jayne.swan@wsp.com

Josh Speedie, Communications Manager, ONTrack Alliance
Joshua.Speedie@wsp.com

James Burchell, Advisor, Community Engagement and Issues Manager, Metrolinx
James.burchell@metrolinx.com



@Metrolinx



@GOExpansion



<https://www.metrolinx.com/union>



TorontoWest@metrolinx.com

