

GO Expansion

Bloor-Lansdowne GO Station Construction Liaison Committee (CLC)

September 23, 2025

Cet présentation est disponible en français sur demande.
Si vous êtes intéressé, veuillez envoyer un courriel à
TorontoWest@metrolinx.com



Rendering of the future Bloor-Lansdowne station
Street entrance. Subject to change.

LAND ACKNOWLEDGEMENT

Metrolinx acknowledges that we connect communities by building and operating transit within the traditional lands of the Anishinaabe, the Haudenosaunee and the Wendat peoples, for whom these lands continue to have great importance.

Treaties between First Nations and governments cover these lands, and the promises contained in these Treaties remain relevant to this day.

Metrolinx and its employees are committed to understanding the history of these lands and the continued impacts of colonization and take responsibility for actions to advance reconciliation.

Metrolinx will continue to seek the knowledge, expertise and experience of Indigenous partners and commits to doing business in a manner that is built on a foundation of trust, respect, and collaboration.



Safety Moment

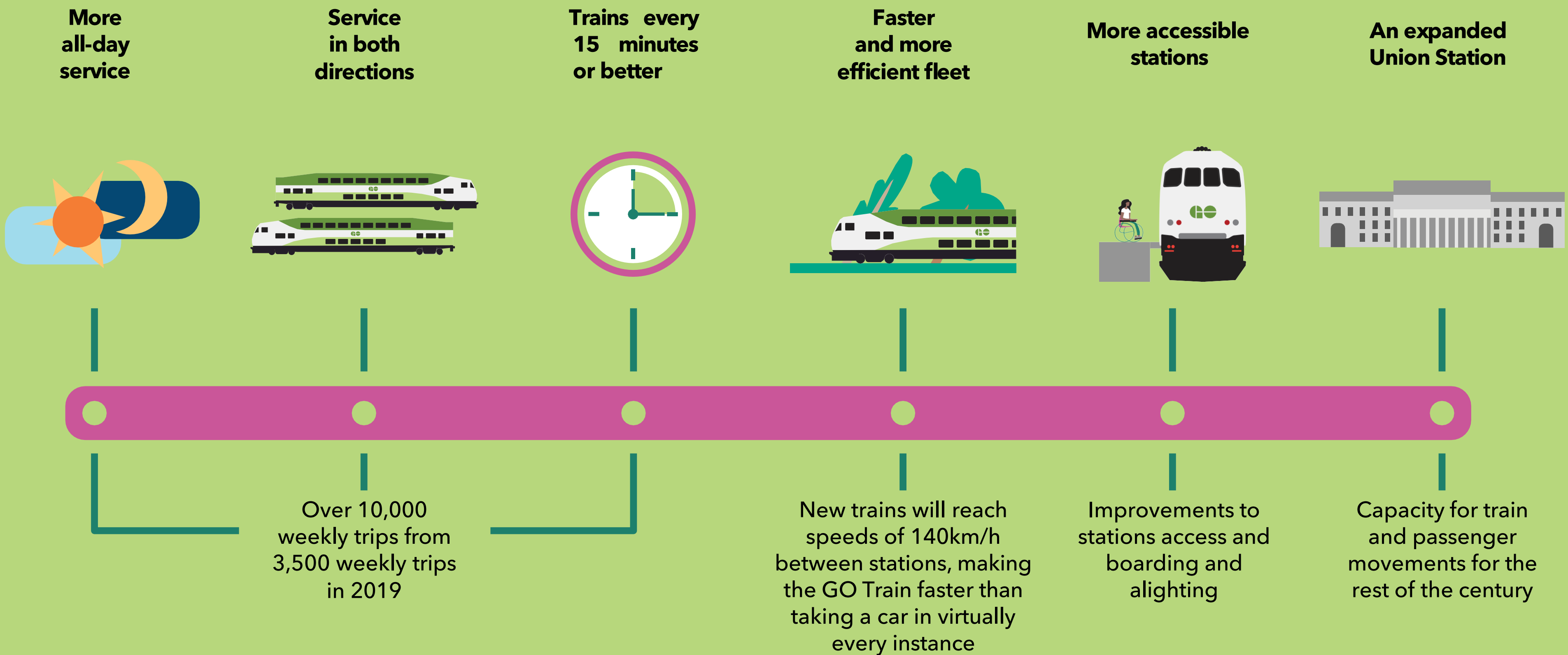
Agenda

1. Welcome
2. Project Overview
3. Construction Updates
4. Discussion
5. Contact us



Bloor-Landsowne Station: Project Overview

The GO Expansion program will provide a range of improvements across the GTHA:



Station Summary

- The new Bloor-Lansdowne GO Station will be located south of Bloor Street West, west of St. Helen's Avenue on the Barrie GO Line.
- The station is part of a better connected, more modern transit network to get you where you need to go.
- The station will be a short walk from the existing Lansdowne and Dundas West TTC subway stations and Bloor GO/UP Express Station.
- A trip from Bloor-Lansdowne GO Station to Union Station will be under 15 minutes.
- A new multi-use path along the east edge of the rail corridor linking to the Davenport Diamond Greenway via a bridge over Bloor Street West and connecting to the future West Toronto Railpath Extension to the south.



Artist rendering showing the multi-use path entrance at Dora Ave.
Final design is subject to change.

Station Features

The future station will feature:

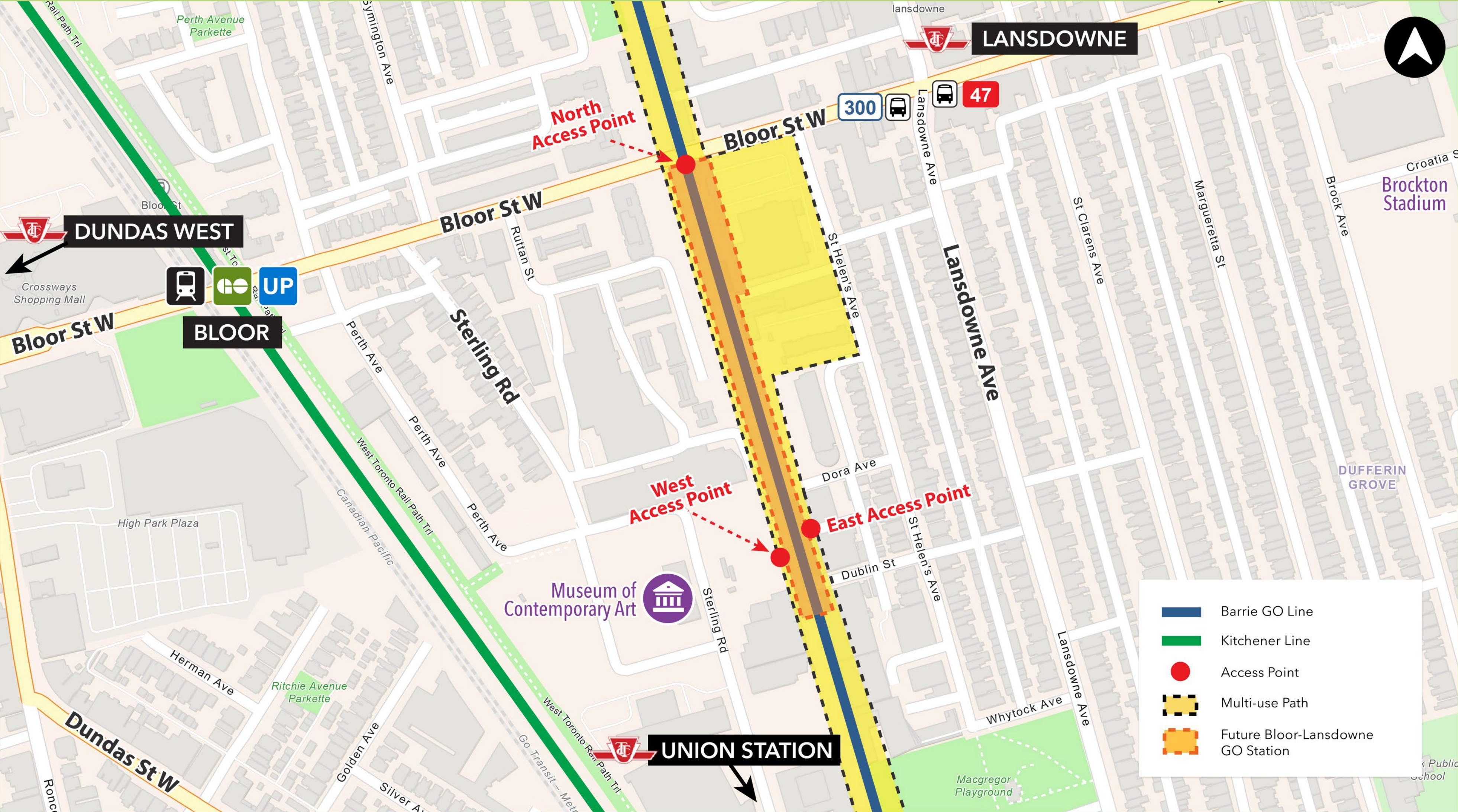
- Bike parking
- Three entryways
- Platform-level plaza with landscaping
- A tunnel connecting the east and west platforms for ease of access
- Single-train connection to Union Station
- A multi-use path adjacent to the Barrie GO Line



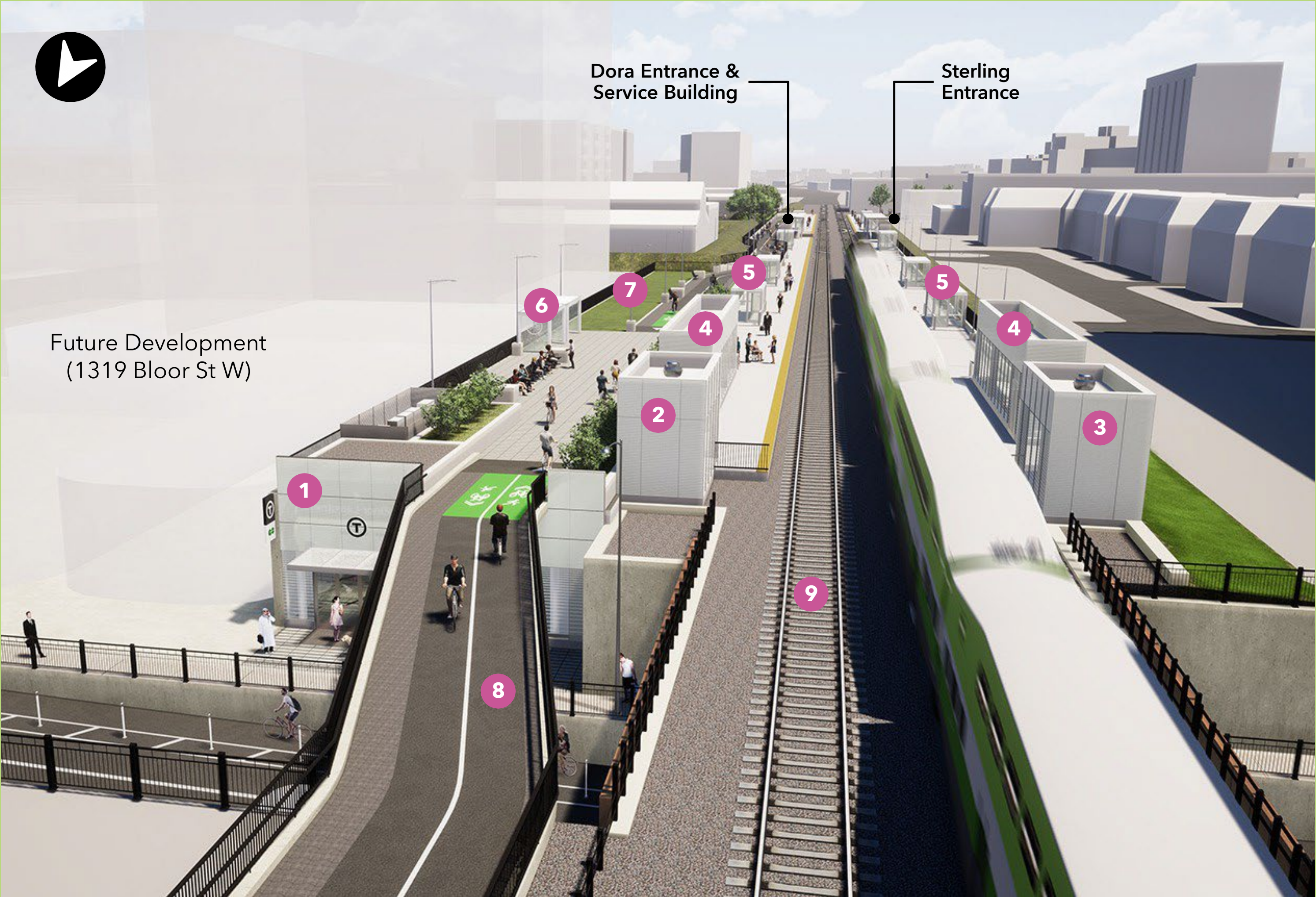
Artist rendering of the multi-use path and bridge at Bloor St W. Final design is subject to change.

Future Location

Draft. Concept design. Work in progress. Not to scale. Subject to change.



New Station Layout and Features

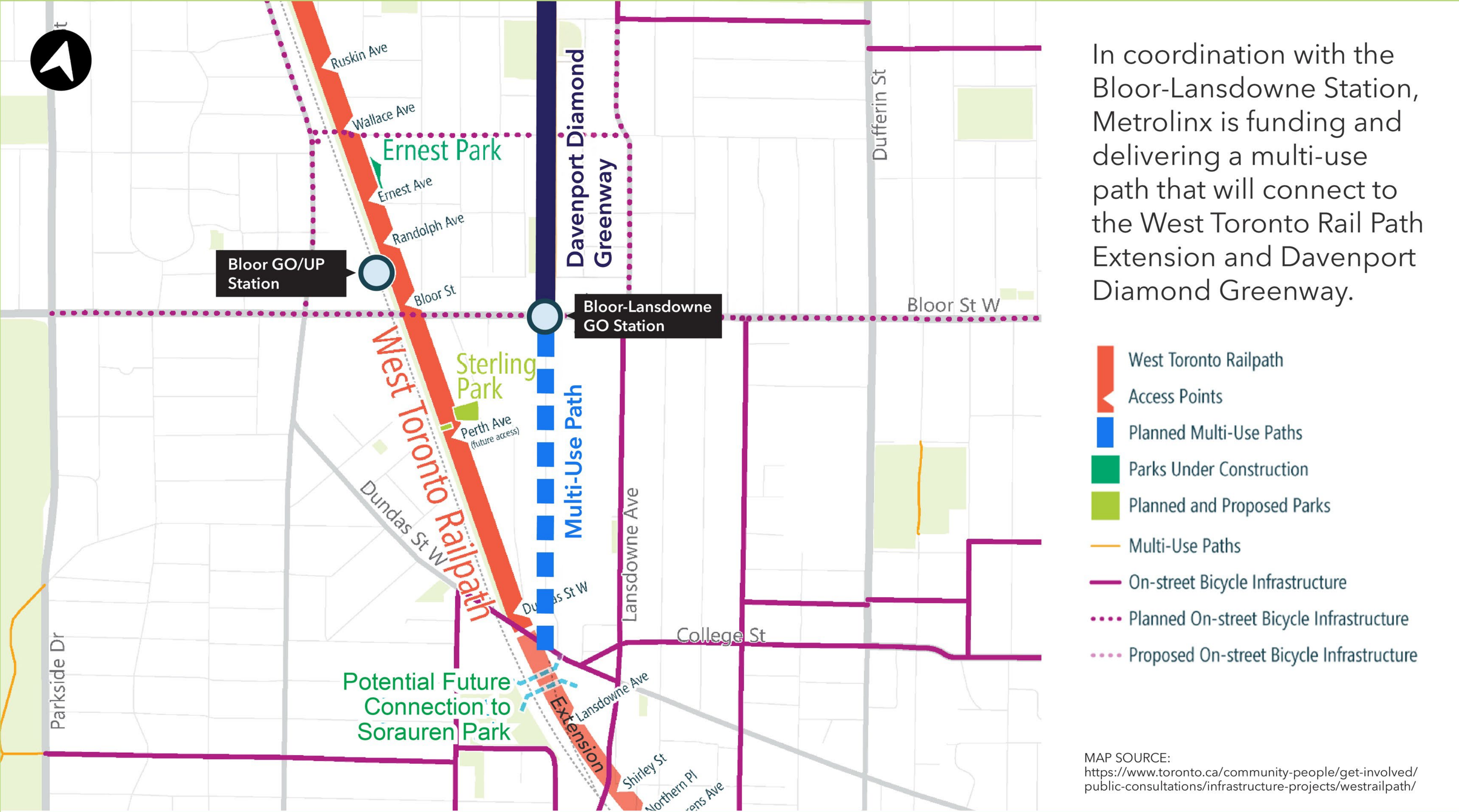


- 1 Bloor Entrance & Main Station Building
- 2 East Platform
- 3 West Platform
- 4 Stairs & Elevators
- 5 Platform Shelters
- 6 Bike Shelter
- 7 Multi-Use Path (MUP)
- 8 Bloor Street Bridge Connecting to Davenport Diamond Greenway
- 9 Barrie Rail Corridor

Digital rendering of Bloor-Lansdowne GO Station. Final design is subject to change.

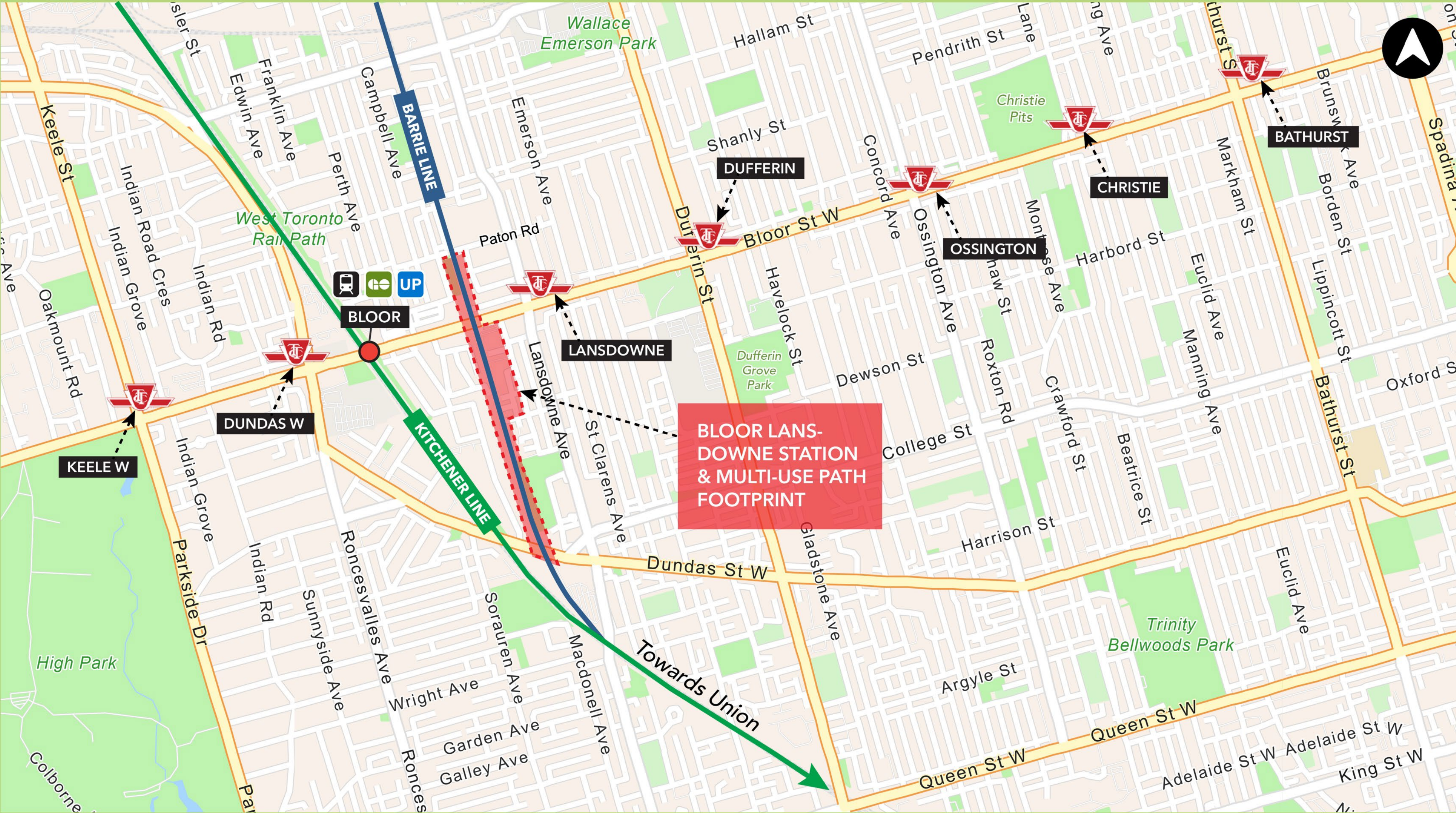
Multi-Use Path

Draft. Concept design. Work in progress. Not to scale. Subject to change.



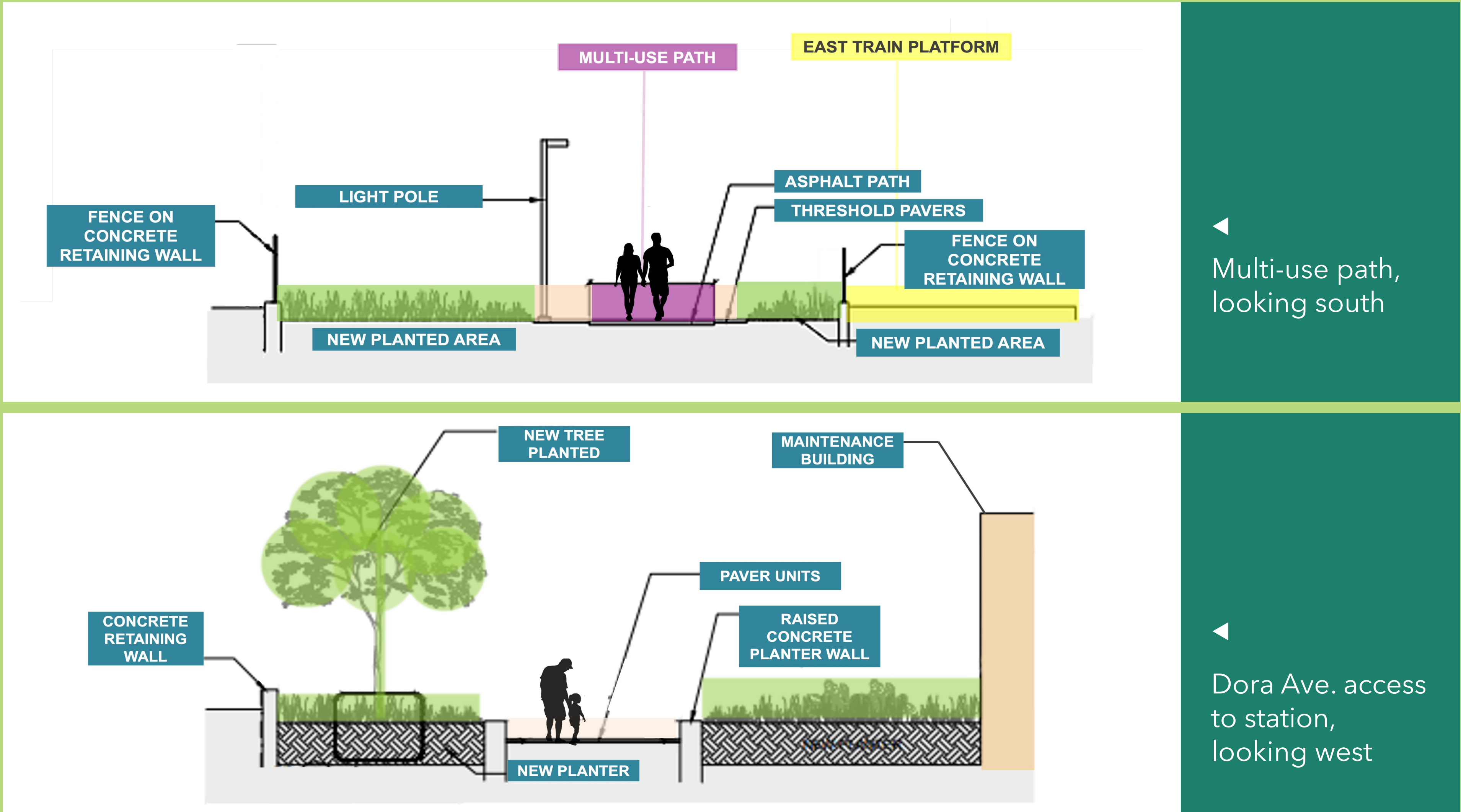
Context Map

Draft. Concept design. Work in progress. Not to scale. Subject to change.



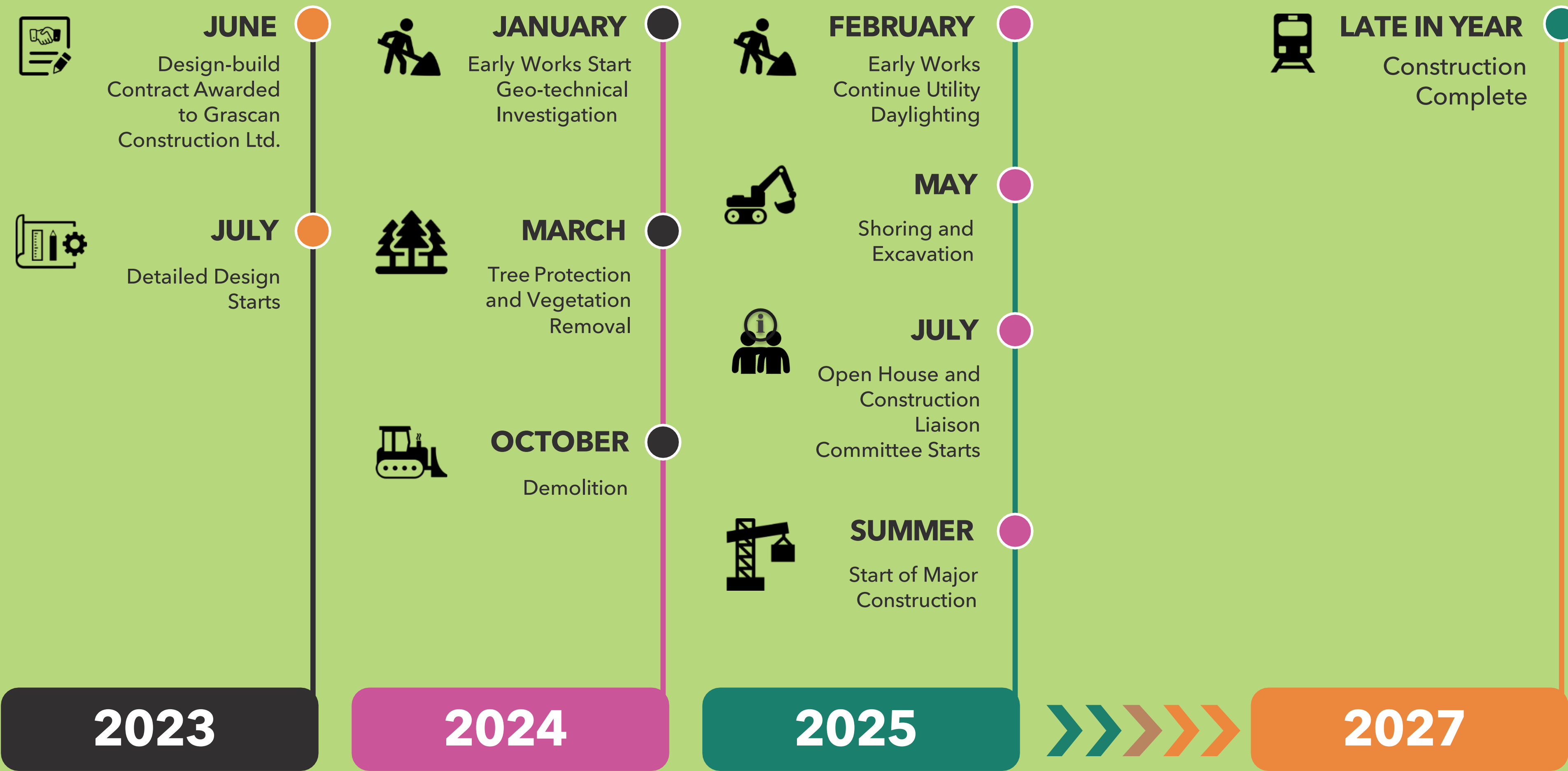
Typical Cross Section

Draft. Concept design. Work in progress. Not to scale. Subject to change.



Project Milestones

 * DATES ARE ESTIMATES AND SUBJECT TO CHANGE



Construction Updates

Works to Date

Activity	Description	Date
(Early Works) Geotechnical and Environmental investigations	Borehole drilling, soil sampling	February 2024
(Early Works) Vegetation Removal	Removal of trees	March 2024
(Early Works) Preliminary Grading	Ground levelling, creating site access, establishing drainage patterns, and base elevations	August - November 2024
(Early Works) Daylighting and underground utility investigations	Locating underground utilities using scanners/locate equipment, test pitting	June - September 2024
(Early Works) Demolition of 17 Dora Ave and 1319 Bloor St. W	Existing structures demolished	October - November 2024
(Early Works) Track Shoring Installation	Installation of track shoring	May - August 2025
(Early Works) Temporary Crossing Installation	Installation of temporary rail crossing 211 Sterling/17 Dora	September 2025
(Early Works) Main Station Building Caisson Installation	Installation of shoring for the main station building, pedestrian tunnel, and MUP bridge pier caissons	August - October 2025

Works in Progress

- **Shoring and Excavation**

- Main station building, pedestrian tunnel, and MUP bridge
- Shoring tracking for completion by end of October.
- Notice
- Notice
- Excavation/Construction begin in November

- **Temporary Concrete Barriers Install**

- Grading and preparatory works began on September 22 - November 14
- Notice

- **Minor Track Closure**

- October 31 - November 3, 2025
- Weekend of continuous day and night works.

- **Fence Installation**

- Removal of existing fence and installation of temporary fencing along east corridor properties (St. Helens/Dora Ave)



Construction Lookahead

Timeline*	Activity	Description	Hours
*dates are tentative			
Mid-October 2025 to March 2026	East Platform Construction	Includes excavation, grading, pouring of concrete, foundation and utilities works, retaining wall construction.	Day and night Day: 7 AM – 5 PM Night: 9 PM – 6 AM
Tracking for a start date of October 17, 2025; ongoing until March 2026	Service Building Construction (Below Ground)	Includes site preparation, shoring and excavations, foundation and utilities work, stormwater tank installation.	Daytime work hours from 7 AM – 5 PM
November 2025 – March 2026	Main Station Building Excavation/Construction	Includes the use of excavators, triaxle dump trucks, and loaders.	Day and night Day: 7 AM – 5 PM Night: 9 PM – 6 AM

Mitigations

- **Noise:** sound monitoring technology will be utilized to ensure that noise levels do not exceed a decibel limit in compliance with Metrolinx's construction noise criteria for residential work
 - (Lmax = 90dBA day/ 80dBA night, Monday to Friday).
 - (Leq = 85dBA day/75dBA night, Monday - Friday).
- **Vibrations:** vibration monitors will also be in place as needed.
- **Dust:** we use water trucks to mitigate the impact of dust in the surrounding areas.

During overnight works:

- **Light:** during overnight work periods, lights will be directed towards the corridor to mitigate light pollution to residential areas.
- **Equipment:** mufflers are used where possible to reduce the noise of beeping machinery and vehicles. Equipment will also be switched off when not in use to lessen noise associated with idling.



Questions and Committee Discussion

Updates will be communicated to the community via:

- Mail drops of notices to residents
- Bi-weekly Toronto West E-Newsletter
- Project website
(metrolinx.com/bloorlansdowne)
- Monthly Construction Liaison Committee (CLC) Meeting
- Virtual and in-person public meetings
- Community pop-ups
- Toronto West phone number:
 - 416-202-6911
- Toronto West email:
 - TorontoWest@metrolinx.com
- X: @GOExpansion
- Metrolinx Engage

Cette présentation est disponible en français sur demande. Si vous êtes intéressé, veuillez envoyer un courriel à TorontoWest@metrolinx.com



Contact Metrolinx and Stay Connected

Metrolinx will keep the community informed by providing Bloor-Lansdowne GO Station updates and addressing questions and concerns effectively, and quickly.

Connect With Us:

Toronto West Community Engagement Team

TorontoWest@metrolinx.com

416-202-6911

E-newsletter: [Metrolinx.com/subscribe](https://metrolinx.com/subscribe)

Follow us on social media:



This presentation is available in French upon request.

If you are interested, please email TorontoWest@metrolinx.com

Cette présentation est disponible en français sur demande.

Si vous êtes intéressé(e), veuillez envoyer un courriel à TorontoWest@metrolinx.com



*Scan the QR code for Metrolinx
e-newsletter subscription*