

Union Station Enhancement Project

Major Landowners / Tenants Meeting

August 13, 2025



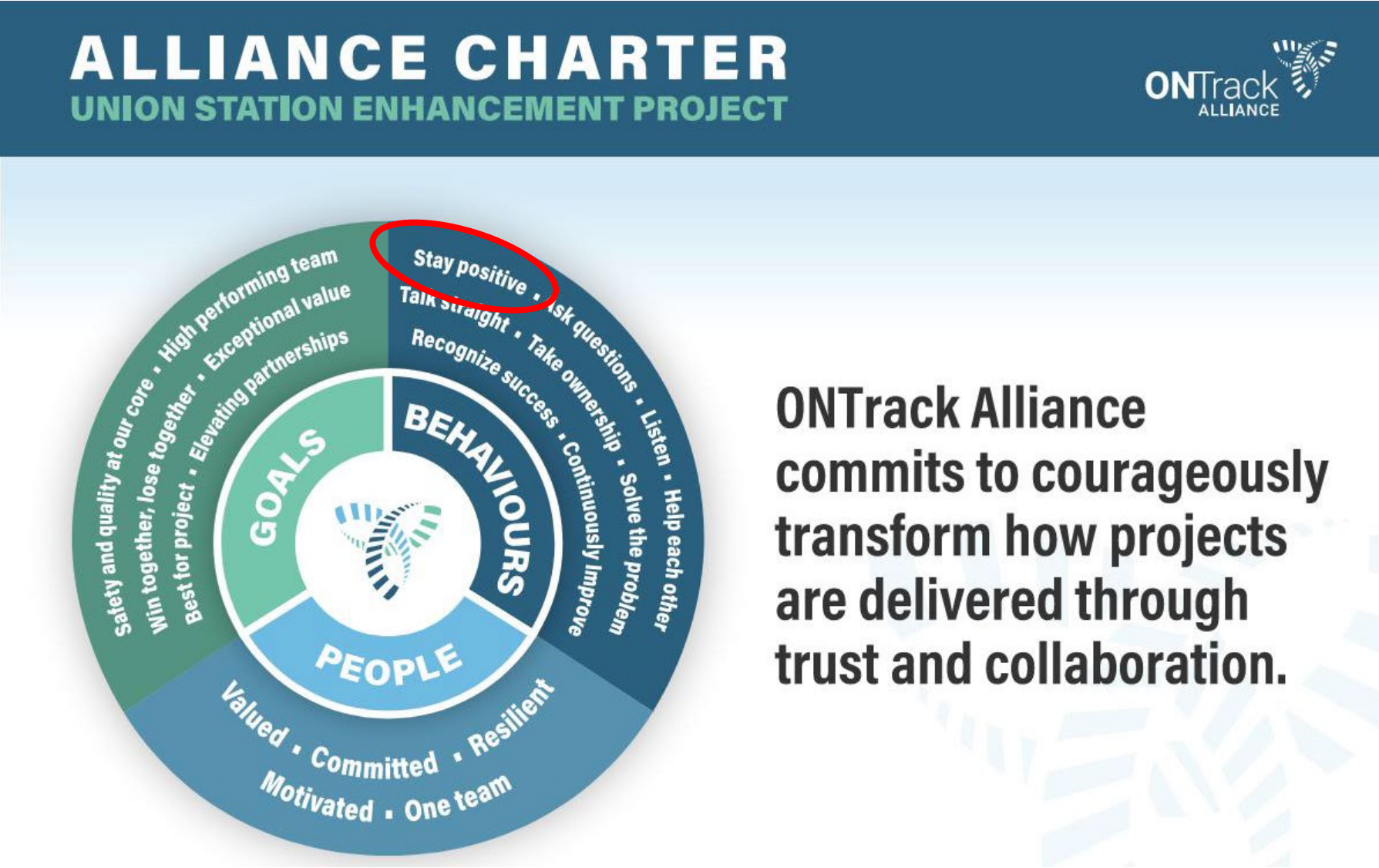
METROLINX LAND ACKNOWLEDGEMENT

Let us take a moment to acknowledge we are on lands that have been, and continue to be, home to many Indigenous Peoples including the Anishnabeg, the Haudenosaunee and the Huron-Wendat peoples. We are all Treaty people.

Many of us have come here as settlers, as immigrants or involuntarily as part of the trans-Atlantic slave trade, in this generation, or generations past. We acknowledge the historic and continued impacts of colonization and the need to work towards meaningful reconciliation with the original caretakers of this land.

We acknowledge that Metrolinx operates on territories and lands covered by many treaties that affirm and value the rights of Indigenous communities, Nations and Peoples.

We understand the importance of working towards reconciliation with the original caretakers of this land. At Metrolinx, we will conduct business in a manner that is built on a foundation of trust, respect and collaboration.



**ONTrack Alliance
commits to courageously
transform how projects
are delivered through
trust and collaboration.**

AGENDA

1 UNION STATION ENHANCEMENT PROJECT (USEP) OVERVIEW

2 CONSTRUCTION UPDATES

3 CUSTOMER UPDATES

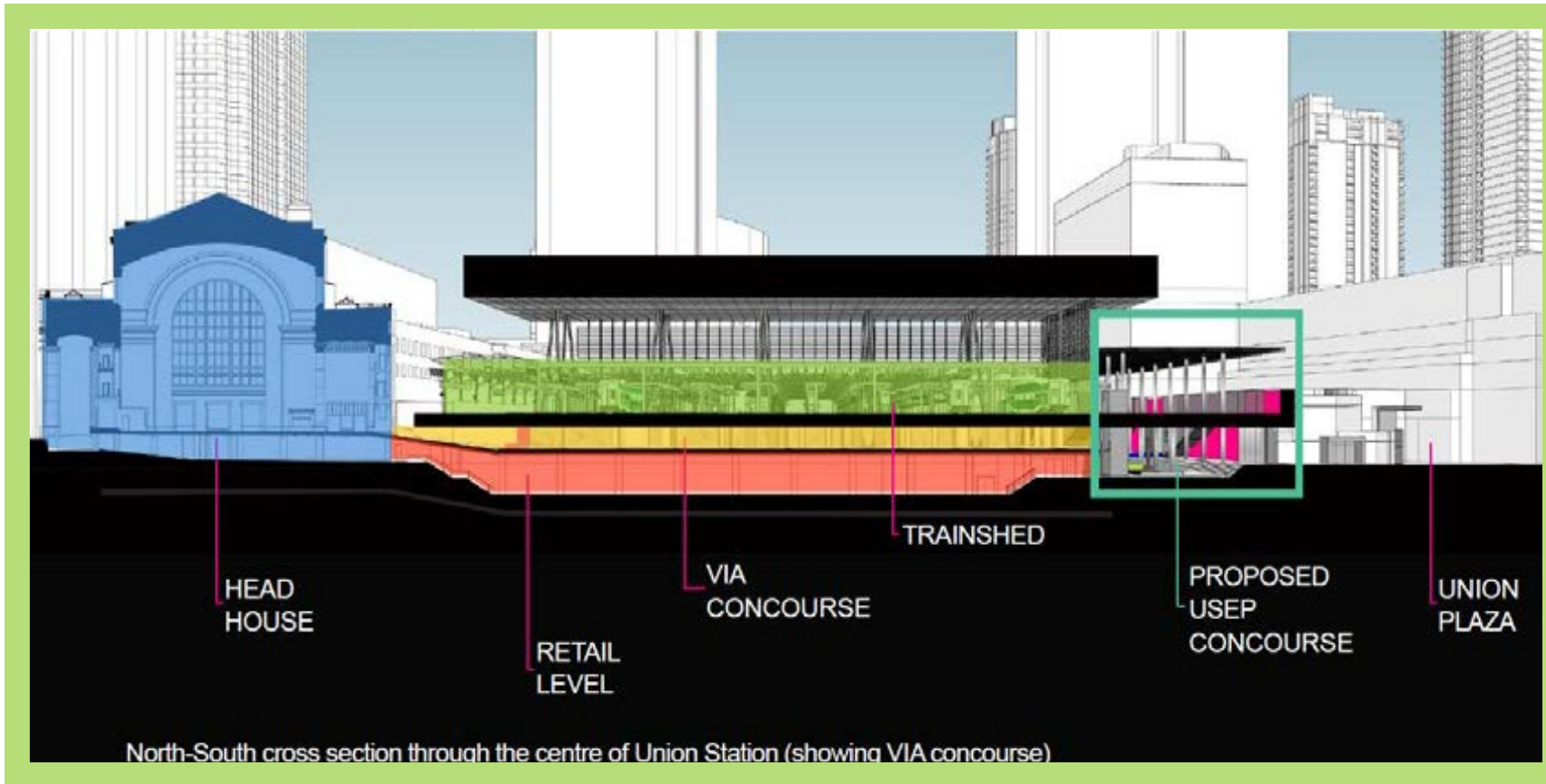
4 NEXT STEPS

Your Key OnTrack Alliance Contacts:

- Sarah Jayne Swan, Project Coordinator, Stakeholder & Communications, ONTrack Alliance, sarah-jayne.swan@wsp.com
- Josh Speedie, Communications Manager, ONTrack Alliance, Joshua.Speedie@wsp.com
- Marija Cvetkova, Community Engagement Advisor, Community Engagement, GO Expansion, Metrolinx, Marija.Cvetkova@metrolinx.com

USEP PROJECT OVERVIEW

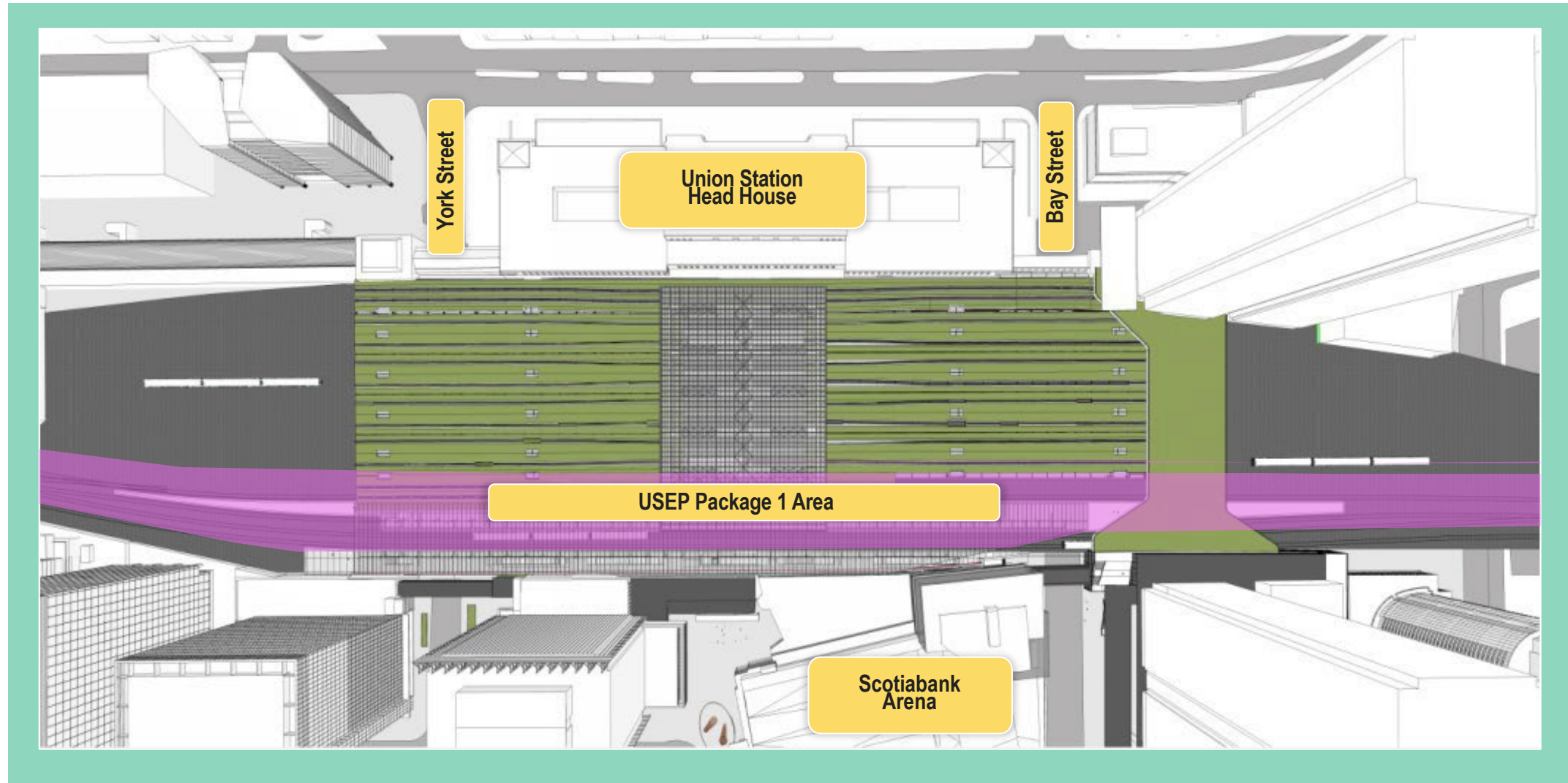
GO EXPANSION ENABLING WORKS



The Union Station Enhancement Project (USEP) is a GO Expansion Enabling Works project that is required in advance of the On-Corridor Works project in order to facilitate future track closures for the reconstruction of platforms within the existing trainshed, and to optimize the overall On-Corridor Works construction schedule.

The USEP is required in addition to the rehabilitation and upgrades already completed or near completion at Union Station.

UNION STATION ENHANCEMENT PROJECT



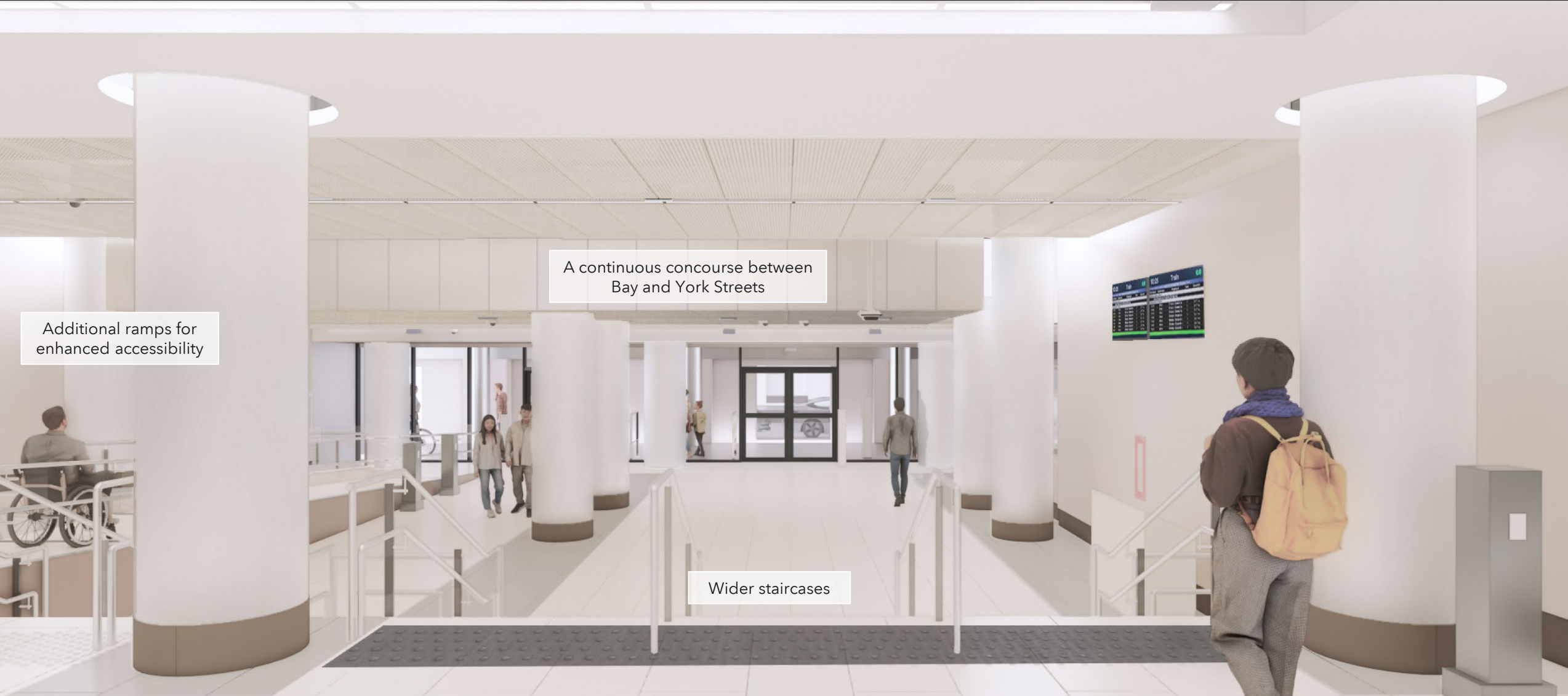
CONCEPTUAL RENDERINGS



Artists rendering. Design subject to change.

Figure: Conceptual rendering of continuous concourse from York Street to Bay Street

CONCEPTUAL RENDERINGS



CONCEPTUAL RENDERINGS

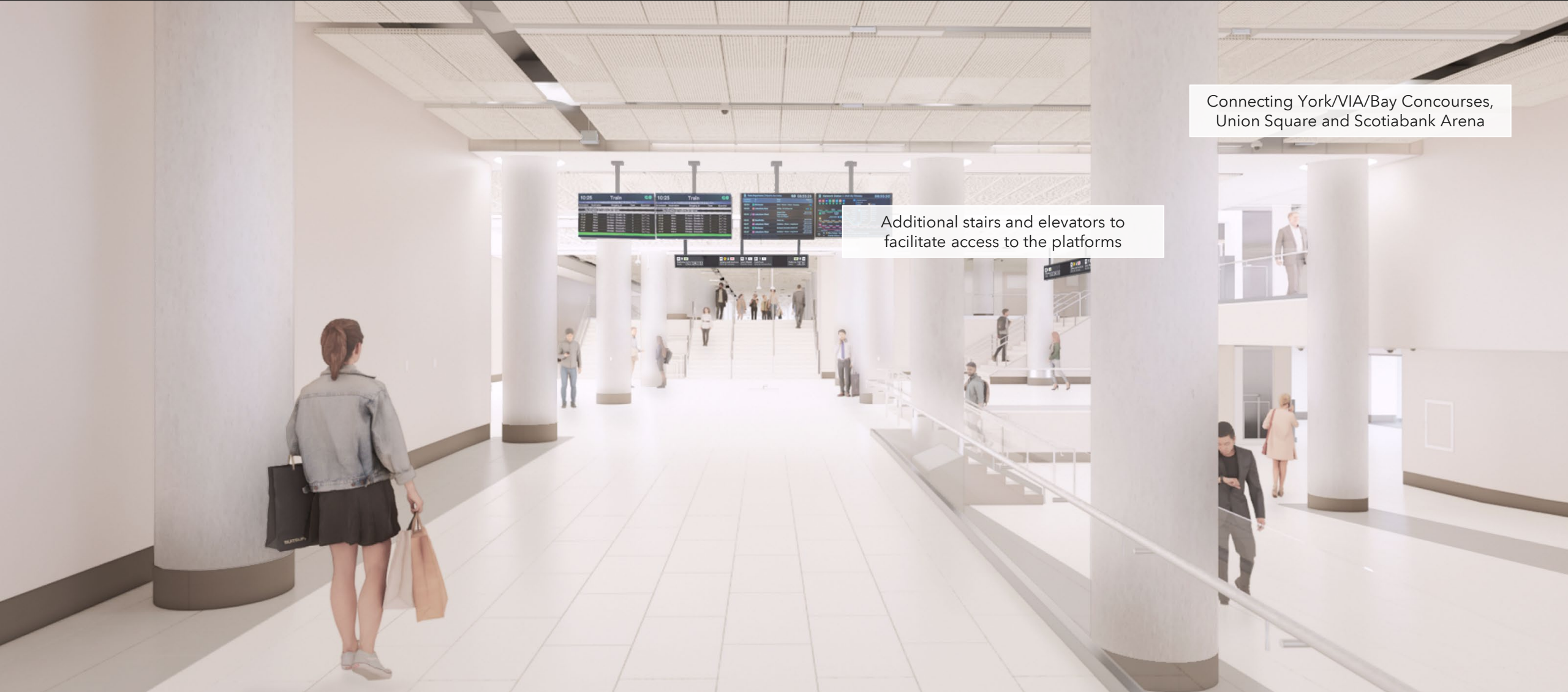


Facilitating new south tracks

Wider platforms

Additional stairs and elevators to facilitate access to the platforms

CONCEPTUAL RENDERINGS



Connecting York/VIA/Bay Concourses,
Union Square and Scotiabank Arena

Additional stairs and elevators to
facilitate access to the platforms

CONSTRUCTION UPDATES

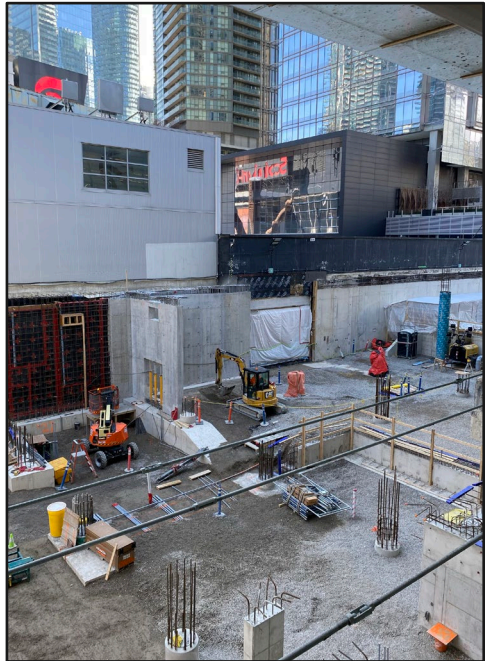
UNION STATION ENHANCEMENT PROJECT CONSTRUCTION

- Demolition, Foundation, Concourse and Track Level Activity - Phasing
 - Progress of demolition, foundation, concourse and track level updates across Areas A - J.
- Customer Communications
- Next Steps



TRACK LEVEL - PROGRESS

Areas F (south east facing)



March, 2025



April 2025



June 2025



July, 2025



August, 2025

TRACK LEVEL - WEST OF YORK ST (AREA A)

- Hand chipping of abutment footing complete
- Trailers moved in along the south crash wall
- Continuing caisson excavations
- Area is being prepared for micropiles

Next steps:

- Backfilling to grade, pouring north wall

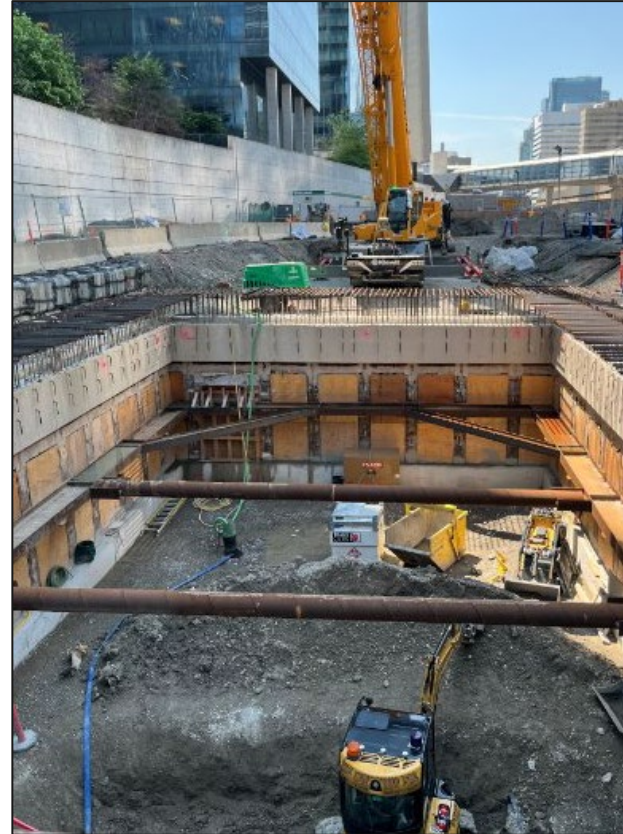
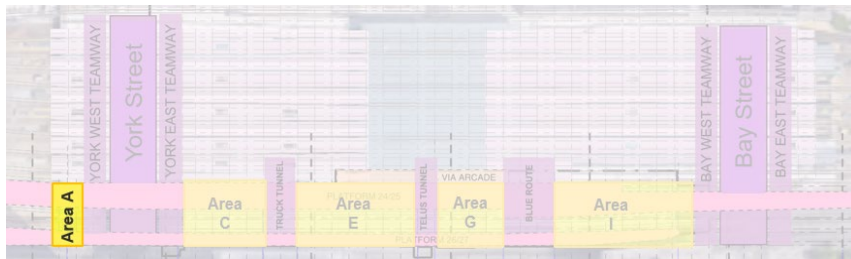


Photo: Area A
(west facing)
July 2025

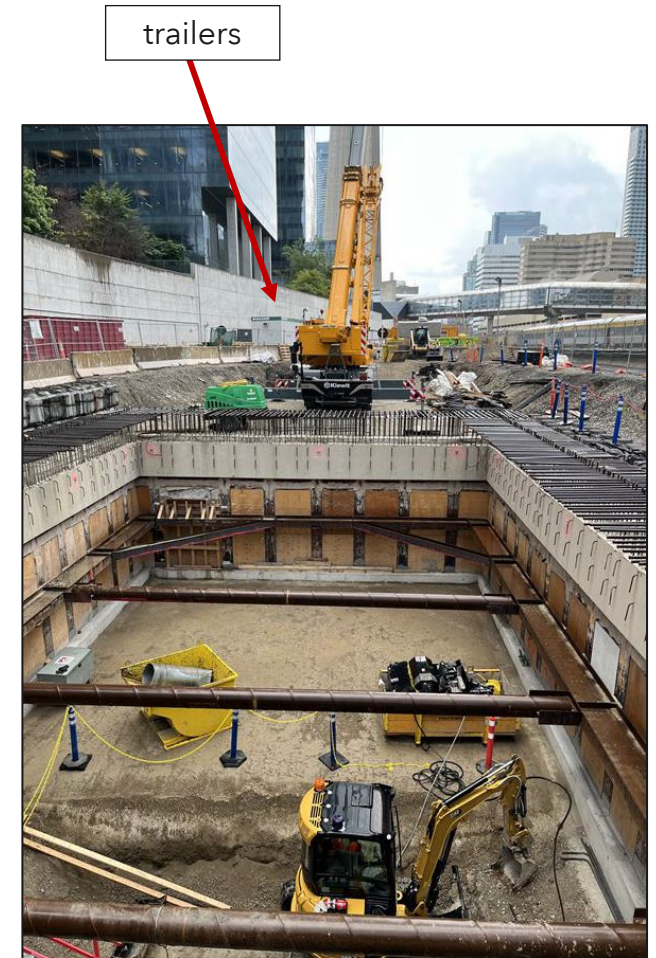


Photo: Area A
(west facing)
August 2025

TRACK LEVEL - YORK STREET TEAMWAYS (AREA B)

Enwave Scope

- Ongoing until end of August 2025
- Full closure of the south side of the YWT
- Pedestrians re-routed to sidewalk outside of the teamway

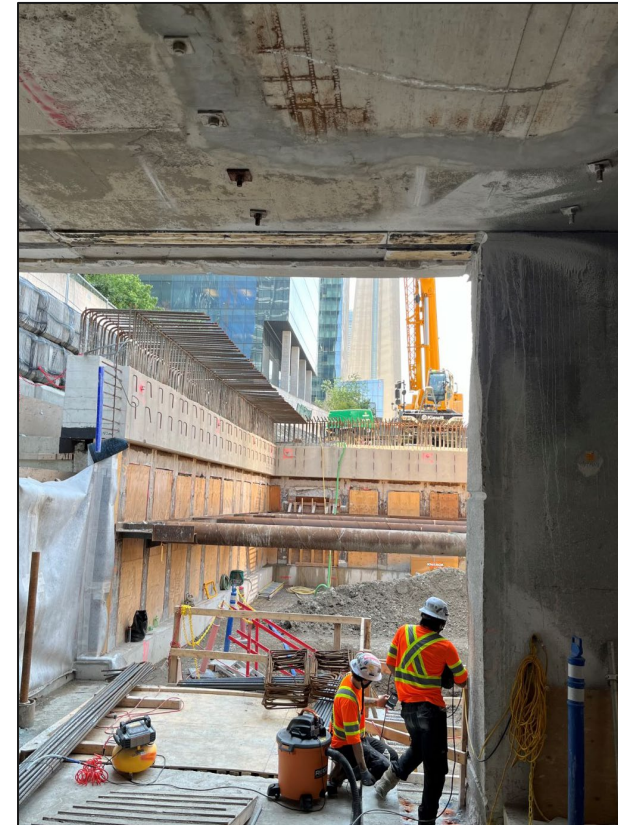
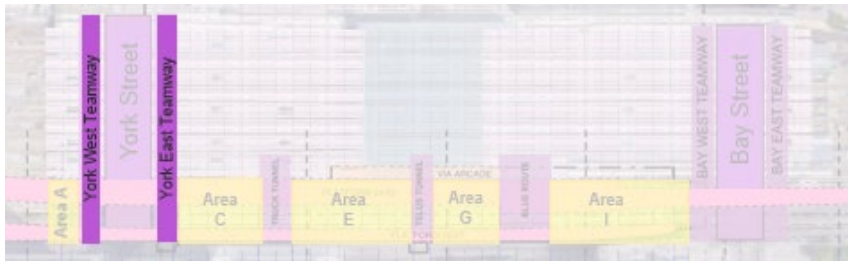


Photo: YWT Large opening into Area A

TRACK LEVEL - EAST OF YORK ST (AREA C)

- Fit-out of this area is ongoing
- Block wall installation, electrical hangers and dewatering (see following slides)

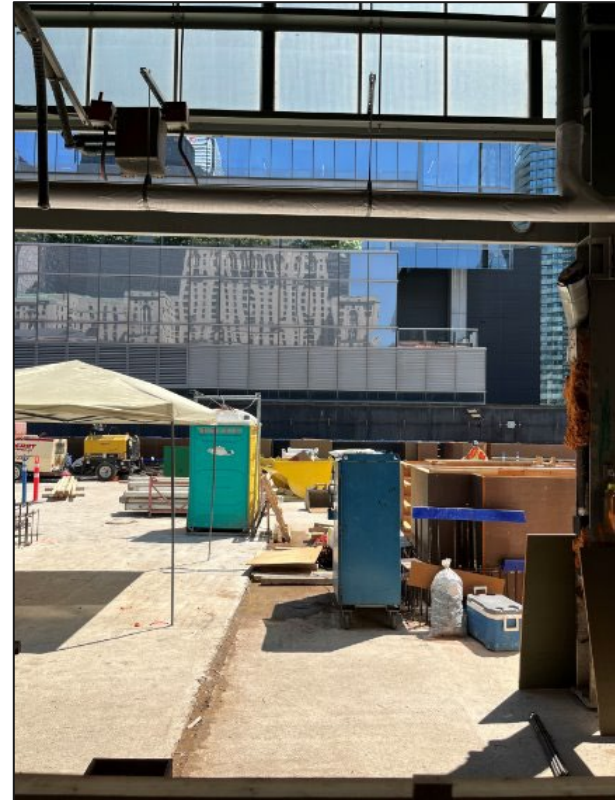
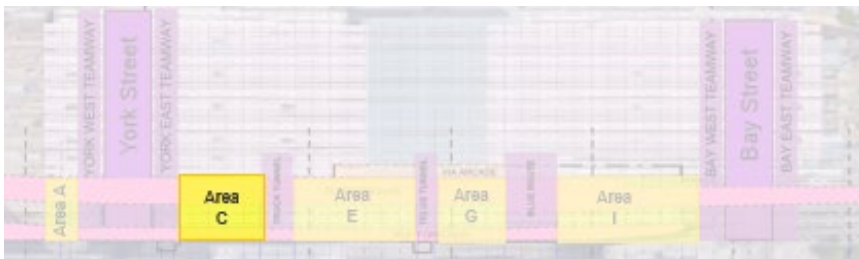


Photo: Area C
July 2025



TRUCK TUNNEL (AREA D)

- Track slab pour complete July 26, 2025
- Soffit installation is ongoing
- Repair on North Beam and chipping at South Beam

South Flare Man Door Opening

- Lintel poured for the man door opening
- Next steps: prepping for second man door opening



Photo: Area D, July 2025

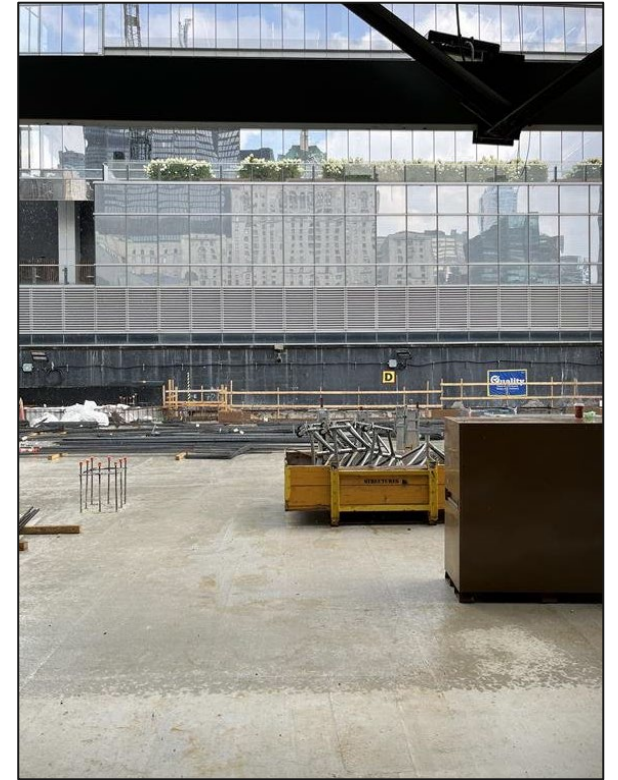


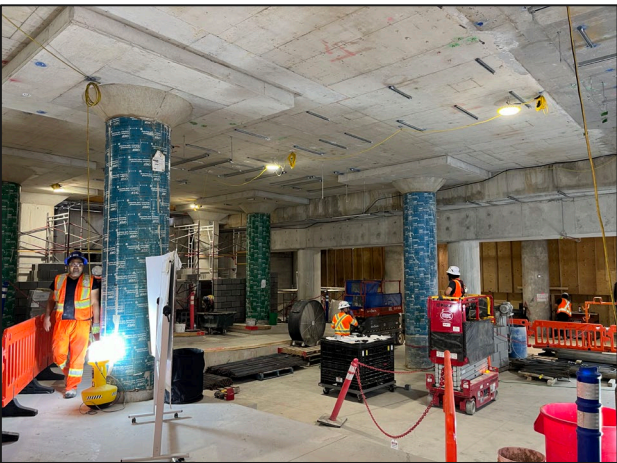
Photo: Area D, August 2025

TRUCK TUNNEL (AREA D)

➡ Looking towards Area C (concourse level)



July 2025



August 2025

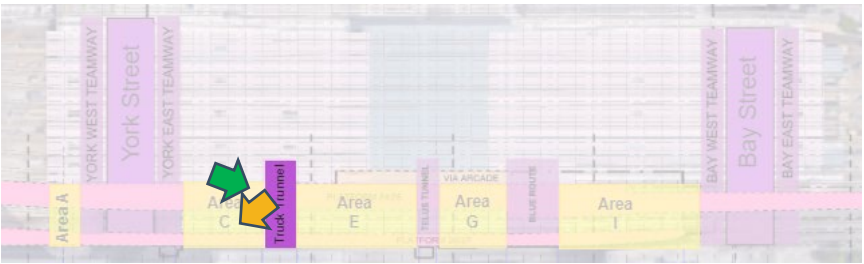
➡ Looking towards Area D (concourse level)



July 2025



August 2025



FITOUT – HANGER INSTALLATION

Collaboration in Action: Build Dots

- OTA prepared a 3D model of USEP which provides a comprehensive and accurate record compared to as-builds drawings.
- Individual layers can be turned on and off to isolate construction elements for comparison and review.
- As everything is georeferenced, the tool can compare the model in real time to what has been installed to display a percent complete in construction.



TRACK LEVEL - AREA E

- Scanning of the rebar in the signal bunker is ongoing
- Continuing 1929 wall repairs
- Chipping of the atrium is ongoing
- Prepping for track pour on August 18
- Next steps: Capital formwork, mechanical and electrical anchor and hanger inserts, prep for the track slab pour



Photo: Prepping for Track Slab Pour, July 2025

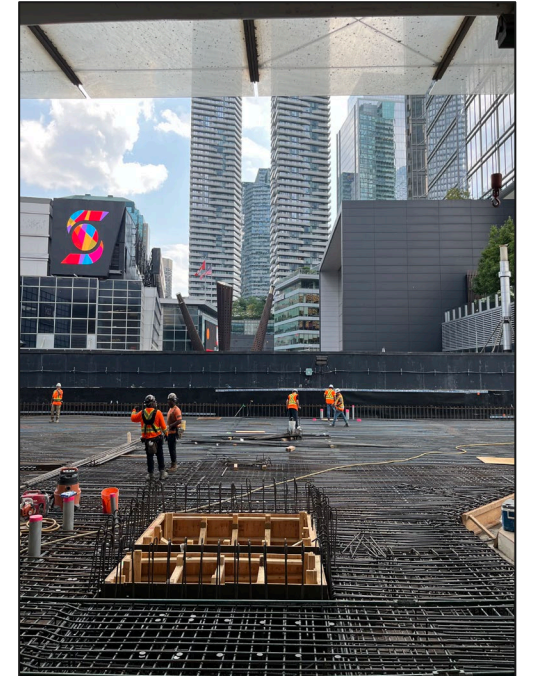


Photo: Prepping for Track Slab Pour, August 2025

TRACK LEVEL - AREAS F/G

South Side

- Shear wall rebar and concrete work is complete
- Survey of electrical work is complete
- Vapour barrier installation is complete

North Side

- Concourse concrete pour is complete

Next Steps: Extending the shoring west to prepare for track slab pour

Mechanical Room 2

- Chipping and formwork is ongoing

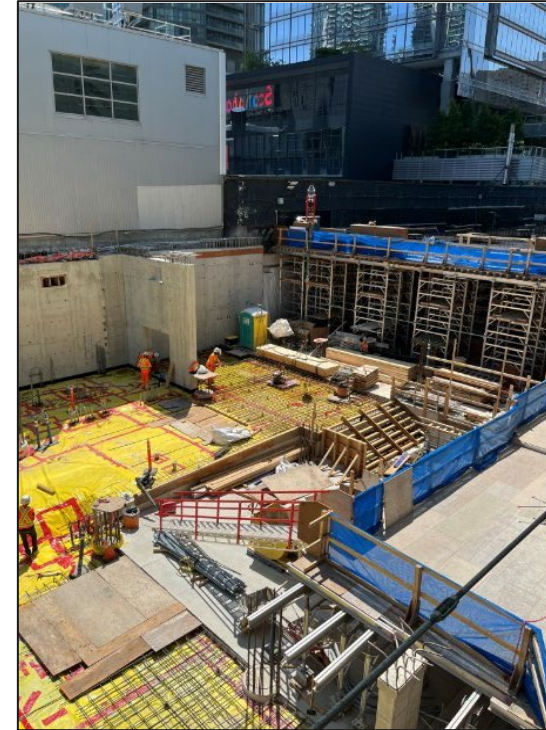
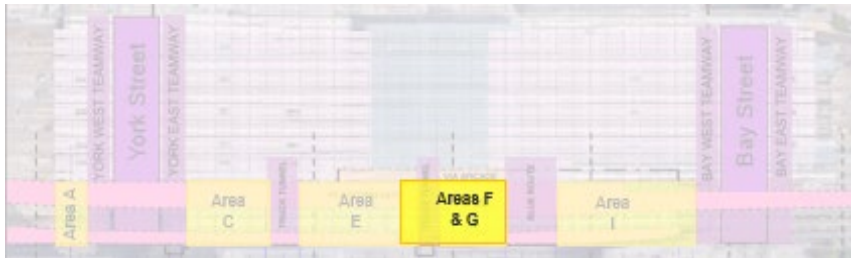


Photo: Area F/G - Shoring & Waterproofing
July 2025

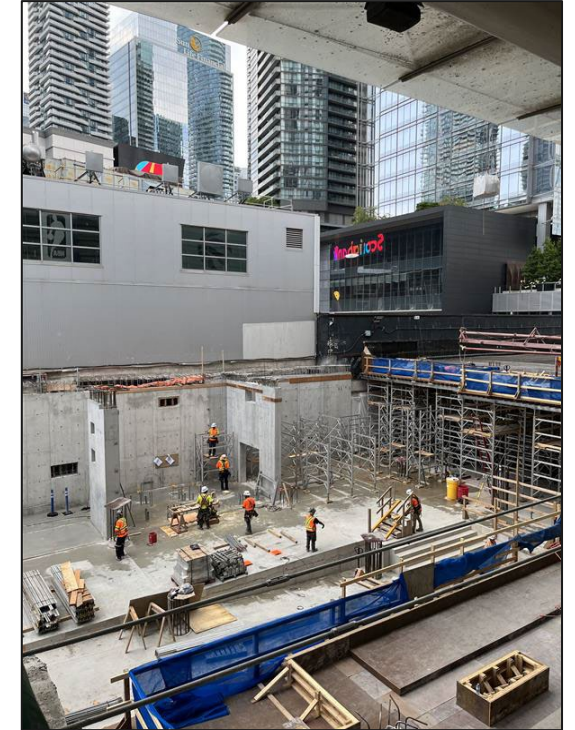


Photo: Area F/G - Concrete poured
now shoring installation
August 2025

TRACK LEVEL - BLUE ROUTE

Area H

- Design and work plan discussions are underway, site visits and investigations ongoing
- Prepping for pilecaps
- Caisson excavations ongoing

Electrical Relocations (120V)

- Complete

Blue Route Investigations

- Design and work plan discussions are underway



Photo: Blue Route openings on the West Wall, July 2025

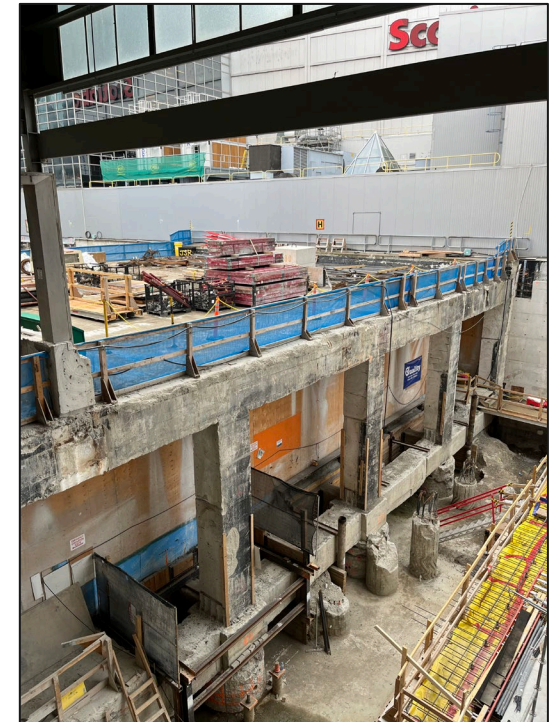


Photo: Blue Route openings on the West Wall, July 2025

BAY ARCADE - BLUE ROUTE

Purpose: To build a temporary ramp for future relocation of Telus Ramp.

Background:

- Bay Arcade temporary ramp hoarding is complete on the North side.
- Next steps: Continuing construction of temporary ramp within hoarding.



Photo: Hoarding (looking east in the Bay Arcade)
July 2025

TRACK LEVEL - AREA I/J

Area I

- Pile cap installations are underway across the area
- Waterproofing is ongoing
- Base of cistern is complete and poured
- Next Steps: Electrical conduits for Mech room 3
- Mechanical Room 3: Waterproofing the walls

Area J

- Installing form work for pilecaps
- Small pour on the east side complete
- Next steps: Formwork and rebar for the pilecaps

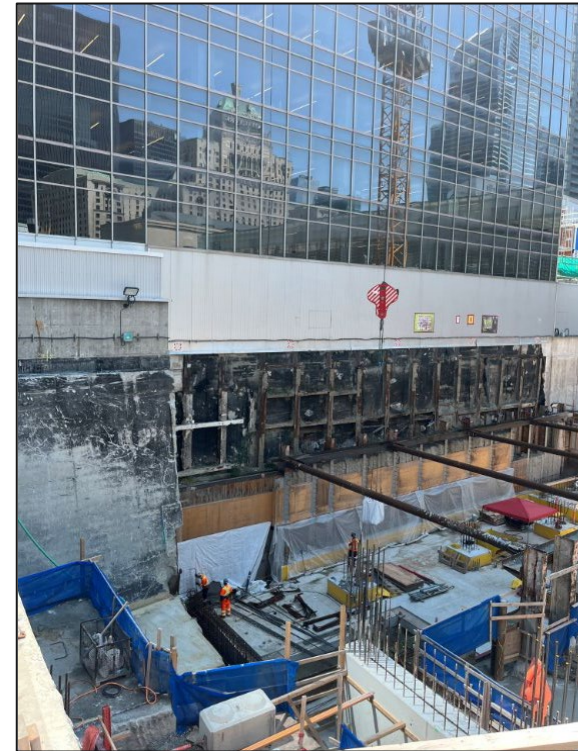
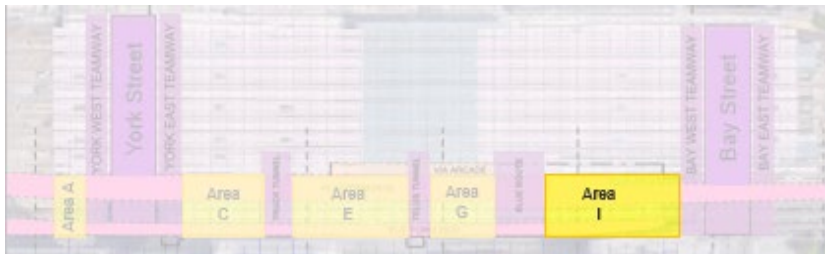


Photo: Area I / J, July 2025

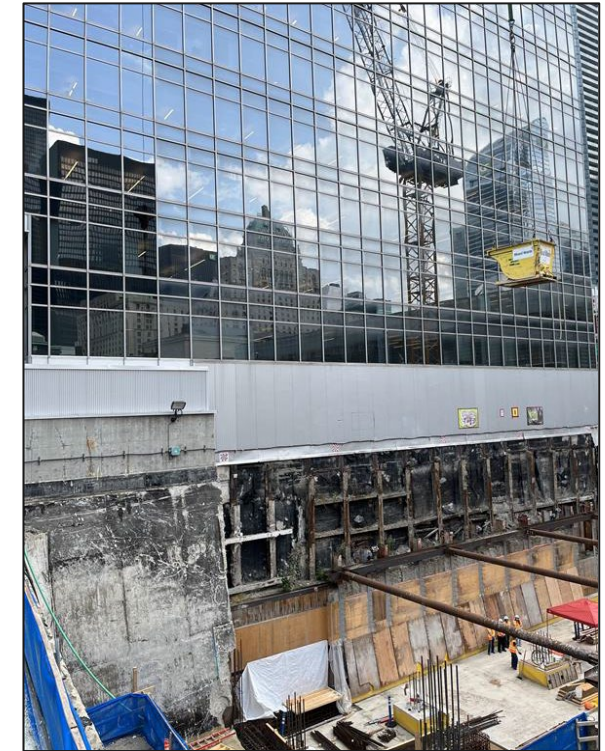


Photo: Area I / J, August 2025

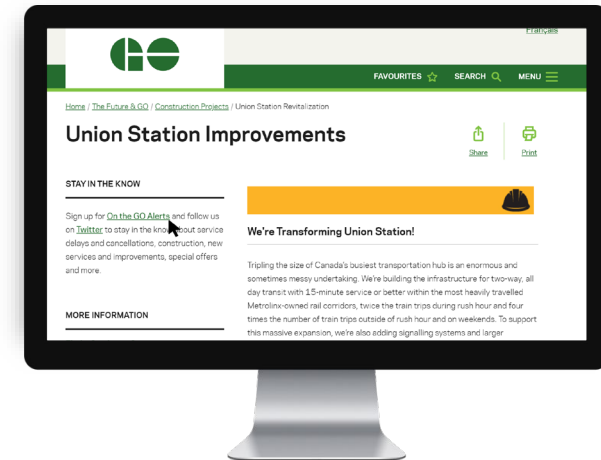
CUSTOMER UPDATES

CUSTOMER UPDATES

ENWAVE

- South section of York West Teamway closure (continuing until end of August 2025)

Construction updates posted on the web at:
[Union Station Improvements](#)
Register for [On the GO alerts](#) to stay in the know



NEXT STEPS

Contacts:

- Sarah Jayne Swan, Project Coordinator, Stakeholder & Communications, ONTrack Alliance
 - sarah-jayne.swan@wsp.com
- Josh Speedie, Communications Manager, ONTrack Alliance
 - Joshua.Speedie@wsp.com
- Nilgun Erkoc, Senior Manager, Community Engagement, GO Expansion, Metrolinx
 - Nilgun.Erkoc@metrolinx.com
- Marija Cvetkova, Community Engagement Advisor, GO Expansion, Metrolinx
 - Marija.cvetkova@metrolinx.com



@Metrolinx



@GOExpansion



<https://www.metrolinx.com/union>



TorontoWest@metrolinx.com

