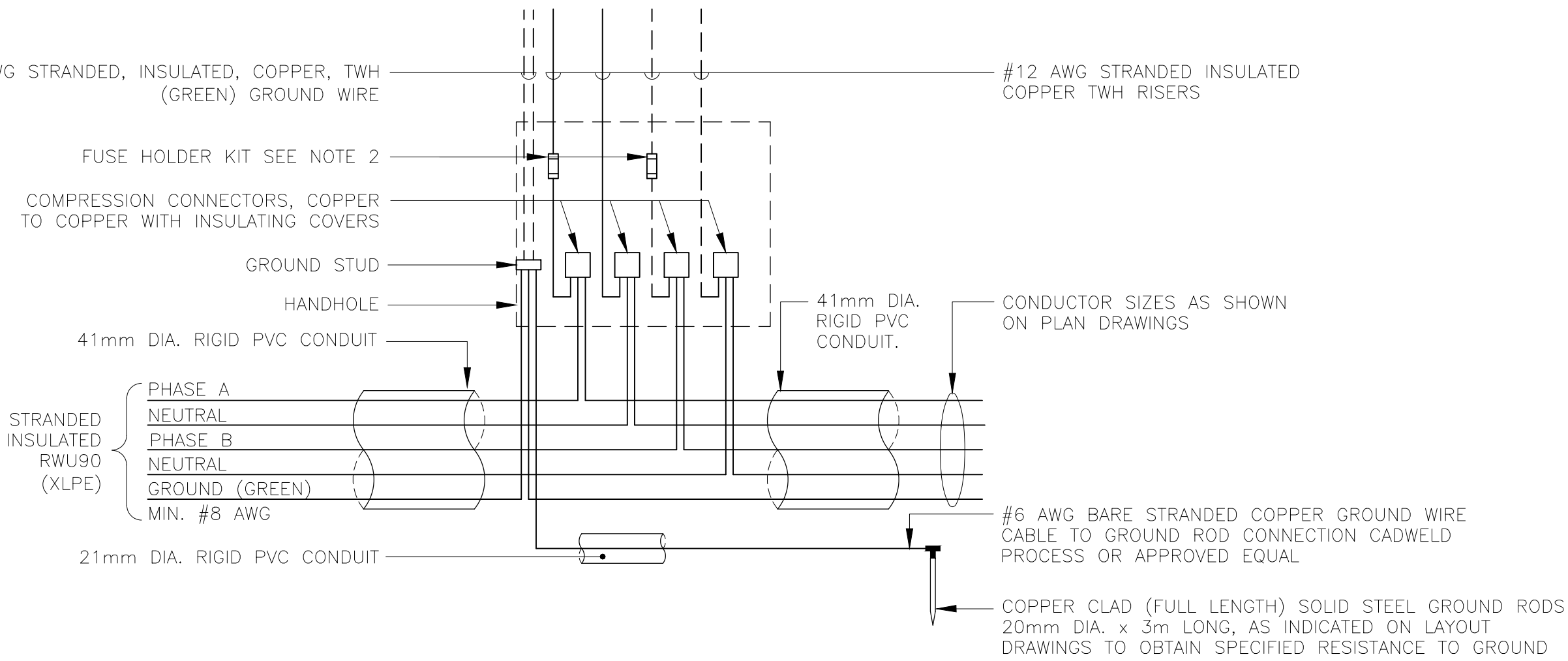


NOTES:

1. BROKEN LINES INDICATE ADDITIONAL CONDUCTORS FOR DOUBLE LUMINAIRE INSTALLATION AND / OR ALTERNATE CIRCUIT IN ACCORDANCE WITH PLATFORM LIGHTING AND WIRING DIAGRAM DRAWINGS.
2. IN-LINE WATERPROOF FUSEHOLDER 600V, 30A WITH BREAKAWAY FEATURE. GOULD GEB-11-11 C/W WATERPROOF INSULATING BOOTS AND ONE 10 AMP FUSE TYPE KTK 600 VOLTS OR APPROVED EQUAL.
3. ALL GROUNDING WIRES TO BE FITTED WITH COMPRESSION LUGS BEFORE SECURING TO GROUND STUD IN POLE.




120/208 VOLT, 3 PHASE SYSTEM

120/208V OR 347/600V 1 PHASE SYSTEM

NOTE:
THIS DRAWING IS PROVIDED FOR INSTRUCTIONAL DESIGN PURPOSES ONLY BASED ON METROLINX GO TRANSIT DESIGN GUIDELINES AND REQUIREMENTS. THE CONSULTANT SHALL VERIFY FOR LOCAL CODE COMPLIANCE, EXISTING SITE CONDITIONS AND INTER DISCIPLINARY DRAWING COORDINATION. ALL DIMENSIONS AND SPECIFICATIONS SHOULD BE VERIFIED BY CONSULTANT AND/OR CONTRACTOR BEFORE ACTUAL CONSTRUCTION BEGINS.

METROLINX PROJECT NO. XXXXXX

REFERENCE DRAWINGS		ISSUE		REVISIONS		DRAWN BY:	DESIGNED BY:		XXXXXXXXX STATION			
						YY/MM/DD	YY/MM/DD		6m LIGHT STANDARD-HINGED POLE			
						CHECKED BY:	APPROVED BY:		WIRING DIAGRAMS			
						YY/MM/DD	YY/MM/DD					
						SCALE: N.T.S.		FULL SIZE ONLY				
DWG NO.	TITLE	O	24/07/05	INITIAL REVIEW					CONTRACT NO.	DWG. NO.	REV.	SHEET
		NO.	DATE	ISSUED FOR	REV.	DATE			XX-200X-EN-XXX	LS 06H-006	0	