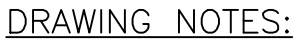
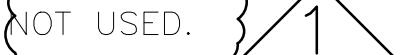



(TO DRAWING SER-E-1001)



1. THIS IS A SINGLE LINE DIAGRAM AND TYPICAL ELECTRICAL ROOM LAYOUT FOR A GO STATION ELECTRICAL DISTRIBUTION SYSTEM AT SAMPLE 347V/600V 3-PHASE 4-WIRE. FOR SERVICES ABOVE 800A AT 600V OR ABOVE 1KV SERVICES THESE DRAWINGS DO NOT APPLY.
2.  NOT USED.
3. FIRE WATER PUMP NOT SHOWN, IF REQUIRED CONNECT TO LIFE SAFETY ATS AS PER ESA REQUIREMENTS.
4. UPS WITH AN EXTERNAL MAINTENANCE BYPASS SUPPLY CRITICAL LOADS. A SEPARATE UPS WITH AN EXTERNAL MAINTENANCE BYPASS SHALL BE PROVIDED TO SUPPLY LIFE SAFETY LOADS. REFER TO DRM FOR DEFINITION OF LIFE SAFETY LOADS.
5. RACEWAYS AND EQUIPMENT ARE SHOWN FOR REFERENCE ONLY, SIZING IS BASED ON DRM, AND RELATED CODES AND STANDARDS.
6. CONTRACTED PARTY SHALL BE RESPONSIBLE FOR ALL CABLE AND EQUIPMENT SIZING AS PER METROLINX DRM AND RELATED CODES AND STANDARDS.
7. ALL ELECTRICAL ROOMS SHALL BE POSTED ADJACENT TO THE ENTRANCE IN EACH ELECTRICAL ROOM AND BE UPDATED ANNUALLY.
8. LABEL ALL EQUIPMENT AS PER METROLINX NOMENCLATURE STANDARDS.
9. REFER TO DRAWING E-2001A FOR LEGEND OF SYMBOLS.
10. ALL WIRING TO BE LABELED AT BOTH SOURCE AND DESTINATION ENDS WHEN IN CONDUIT/JUNCTION BOXES AND AT ACCESSIBLE JUNCTURES IF IN CABLE TRAYS. THIS LABELING SHALL BE CAPTURED IN THE ELECTRICAL AS-BUILT DRAWINGS TO BE INCLUDED IN THE O&M MANUAL.
11. SUB PANELS FOR LIGHTING AND UPS POWER (I.E. LIFE SAFETY AND CRITICAL) IN SUB ELECTRICAL ROOMS SHALL BE PROVIDED BASED ON SITE CONDITION.

7. A LAMINATED SINGLE LINE DIAGRAM READABLE FROM AT LEAST 1M AWAY, SHALL BE POSTED ADJACENT TO THE ENTRANCE IN EACH ELECTRICAL ROOM AND BE UPDATED ANNUALLY.
8. LABEL ALL EQUIPMENT AS PER METROLINX NOMENCLATURE STANDARDS.
9. REFER TO DRAWING E-2001A FOR LEGEND OF SYMBOLS.
10. ALL WIRING TO BE LABELED AT BOTH SOURCE AND DESTINATION ENDS WHEN IN CONDUIT/JUNCTION BOXES AND AT ACCESSIBLE JUNCTURES IF IN CABLE TRAYS. THIS LABELING SHALL BE CAPTURED IN THE ELECTRICAL AS-BUILT DRAWINGS TO BE INCLUDED IN THE O&M MANUAL.
11. SUB PANELS FOR LIGHTING AND UPS POWER (I.E. LIFE SAFETY AND CRITICAL) IN SUB ELECTRICAL ROOMS SHALL BE PROVIDED BASED ON SITE CONDITION.

REFERENCE		DRAWINGS		ISSUE		REVISIONS		DRAWN BY: X.X.X. YY/MM/DD	DESIGNED BY: X.X.X. YY/MM/DD				XXXXXXX STATION - - - - - SAMPLE SINGLE LINE DIAGRAM-2				
								CHECKED BY: X.X.X. YY/MM/DD	APPROVED BY: X.X.X. YY/MM/DD								
								SCALE: 1:XXX	FULL SIZE ONLY								
DWG NO.	TITLE		0	21/03/09	INITIAL ISSUE		1	24/07/05	REVISED SLD AND NOTES					CONTRACT NO.	DWG. NO. 165-SER-E-1002	REV. 1	SHEET
			NO.	DATE	ISSUED FOR		REV.	DATE									