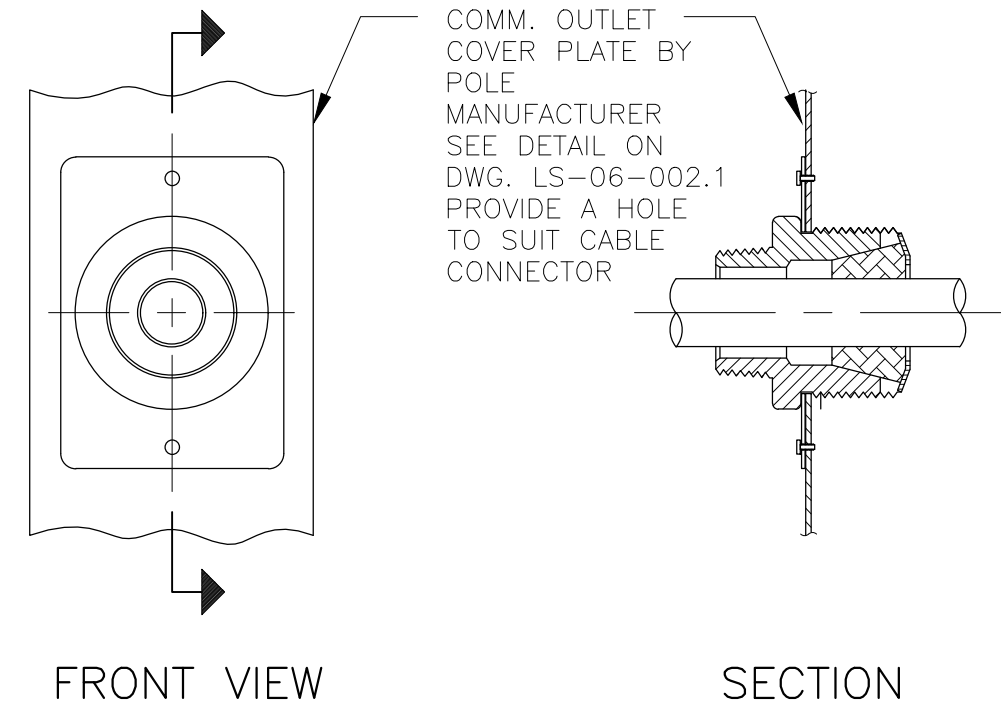


NOTES:

1. THIS TYPICAL 6m STRAIGHT SQUARE GALVANIZED STEEL POLE ASSEMBLY IS GENERAL GUIDANCE FOR ELECTRICAL INSTALLATION APPLICABLE TO BUS LOADING, PUDDO AND WALKWAY AREA CCTV. FOR CONCRETE FOUNDATION REINFORCEMENT, REFER TO LAYOUT DRAWINGS AND CONCRETE FOUNDATION REINFORCEMENT TABLE ON STANDARD DRAWING LS-06-003.1.
2. FOR APPLICABLE CCTV MOUNTING HEIGHTS SEE NOTE 1 ABOVE.
3. THE HORIZONTAL AND VERTICAL TRACK CLEARANCES FOR ALL PLATFORM CCTV POLE INSTALLATIONS SHALL COMPLY WITH THE LATEST CANADIAN NATIONAL AND CANADIAN PACIFIC RAILWAYS STANDARD CLEARANCE DIAGRAM. THE DESIGNER TO DETERMINE EXACT DISTANCE AND MUST OBTAIN WRITTEN APPROVALS BEFORE ANY WORK IS STARTED.
4. INTENTIONALLY LEFT BLANK.
5. INTENTIONALLY LEFT BLANK.
6. COMMUNICATION HARDWARE AND WIRING SUPPLIED AND INSTALLED AS SPECIFIED. FOR EXACT LOCATION OF CAMERA, REFER TO LAYOUT DRAWINGS.
7. GROUNDING RODS TO BE LOCATED AT BASE OF EVERY POLE.
8. ORIENTATE POLE SUCH THAT HANDHOLES POINT DOWN THE LENGTH OF THE PLATFORM.
9. CCTV POLE CONSTRUCTION AND COMPONENTS SHALL BE HOT DIP GALVANIZED STEEL C.S.A. G40.21-44 W MINIMUM WITH 50KSI YIELD.
10. ALL WELDING TO CONFORM TO THE SPECIFICATIONS OF THE C.W.B. W47.1 AND W59 FULLY APPROVED C.S.A. QUALITY PROGRAM STANDARD CAN3-2299.3-1979. DESIGNED TO AASHTO WITH 80MPH WIND SPEED & 1.3 GUST FACTOR, DESIGNED FOR MAXIMUM EPA OF 10.
11. ALL FASTENERS TO BE STAINLESS STEEL EXCEPT WHERE NOTED OTHERWISE.
12. POLE MANUFACTURER SHALL SUPPLY BOLTS, NUTS AND WASHERS TO SUIT DESIGN SPECIFIED IN NOTE 11 ABOVE.
13. NUTS AND BOLTS TO BE STAINLESS STEEL.
14. CCTV CAMERA SHALL HAVE DRIP LOOPS. REFER TO DRM AND I&IT STANDARDS FOR FURTHER DETAILS.

1

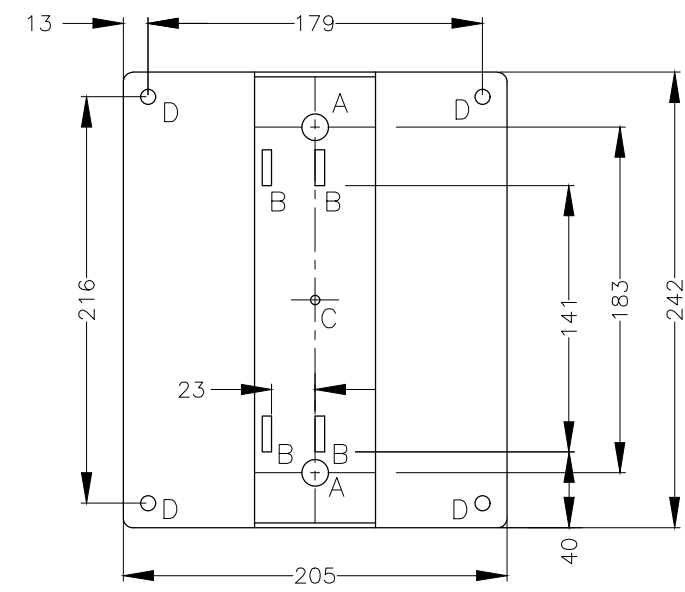


DETAIL

COMM. WIRING OUTLET

7

LS-06-001.1



FRONT VIEW

LEFT SIDE VIEW

MATERIAL MILD STEEL 14 GA, GALVANIZED FINISH  
HOLE SIZES  
A - 14mm DIA.  
B - 19mm X 5mm  
C - 5mm DIA.  
D - INSERTS TAPPED 8mm

DETAIL

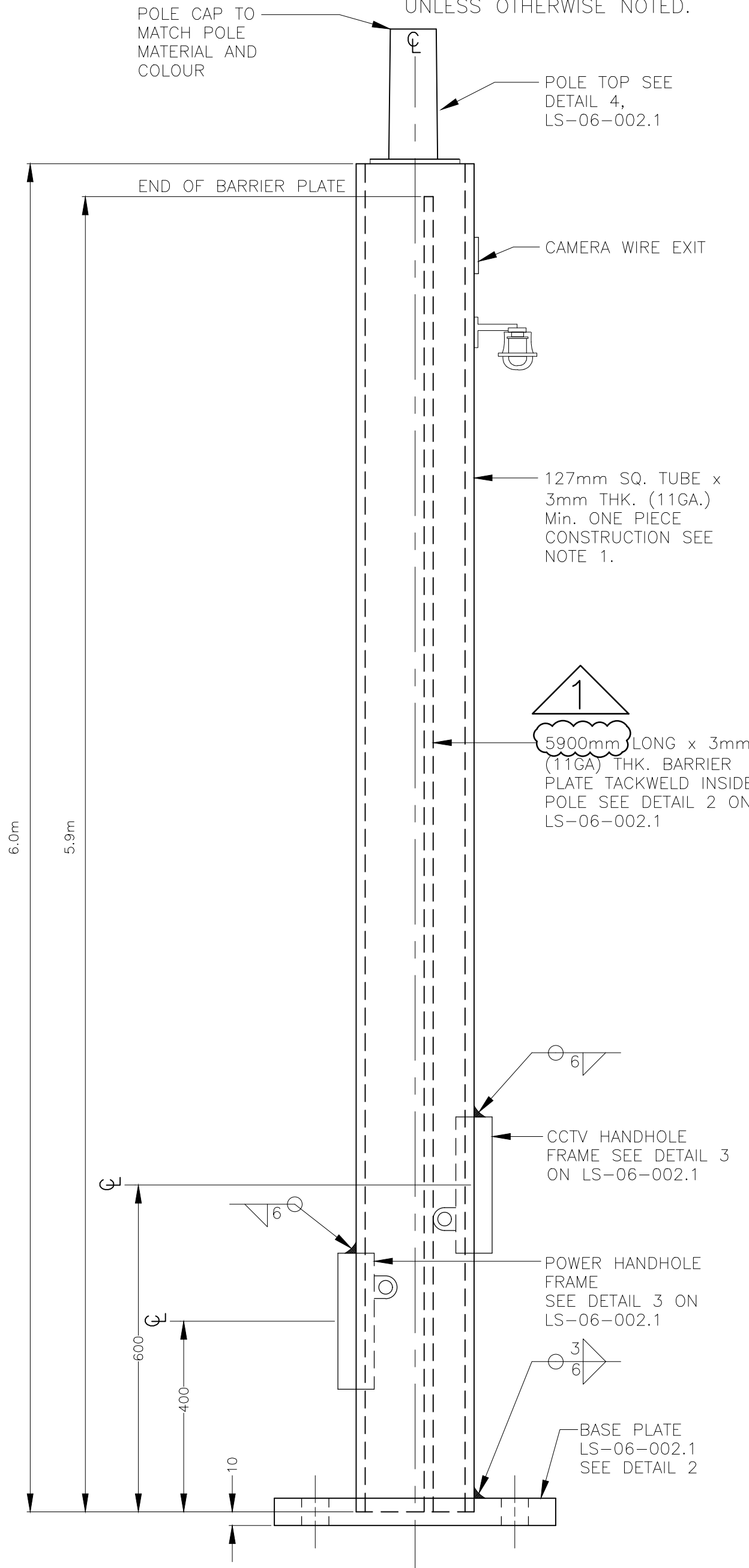
COMM MOUNTING BRACKET

8

LS-06-001.1

METRIC

ALL DIMENSIONS SHOWN ARE IN METRES AND/OR MILLIMETRES UNLESS OTHERWISE NOTED.



DETAIL

POLE SHAFT

1

LS-06-001.1, LS-06-002.1, LS-06-003.1, LS-06-004.1

METROLINX PROJECT NO. XXXXXX

REFERENCE DRAWINGS		ISSUE		REVISIONS		DRAWN BY:	DESIGNED BY:	METROLINX	XXXXXXXXX STATION			
						YY/MM/DD	YY/MM/DD		6m CCTV POLE			
						CHECKED BY:	APPROVED BY:		ELEVATION AND DETAILS			
						YY/MM/DD	YY/MM/DD					
						SCALE: N.T.S.		FULL SIZE ONLY				
DWG NO.	TITLE	NO.	DATE	ISSUED FOR	REV.	DATE			CONTRACT NO.	DWG. NO.	REV.	SHEET
		01	22/02/18	6m CCTV POLE, ELEVATIONS AND DETAILS	01	24/07/05	REVISED ELEVATION AND NOTE		XX-200X-EN-XXX	LS 06-001.1	1	