

GO Expansion

Bloor-Lansdowne GO Station Construction Liaison Committee (CLC)

October 28, 2025

Cet présentation est disponible en français sur demande.
Si vous êtes intéressé, veuillez envoyer un courriel à
TorontoWest@metrolinx.com



Rendering of the future Bloor-Lansdowne station
Street entrance. Subject to change.

LAND ACKNOWLEDGEMENT

Metrolinx acknowledges that we connect communities by building and operating transit within the traditional lands of the Anishinaabe, the Haudenosaunee and the Wendat peoples, for whom these lands continue to have great importance.

Treaties between First Nations and governments cover these lands, and the promises contained in these Treaties remain relevant to this day.

Metrolinx and its employees are committed to understanding the history of these lands and the continued impacts of colonization and take responsibility for actions to advance reconciliation.

Metrolinx will continue to seek the knowledge, expertise and experience of Indigenous partners and commits to doing business in a manner that is built on a foundation of trust, respect, and collaboration.



Safety Moment

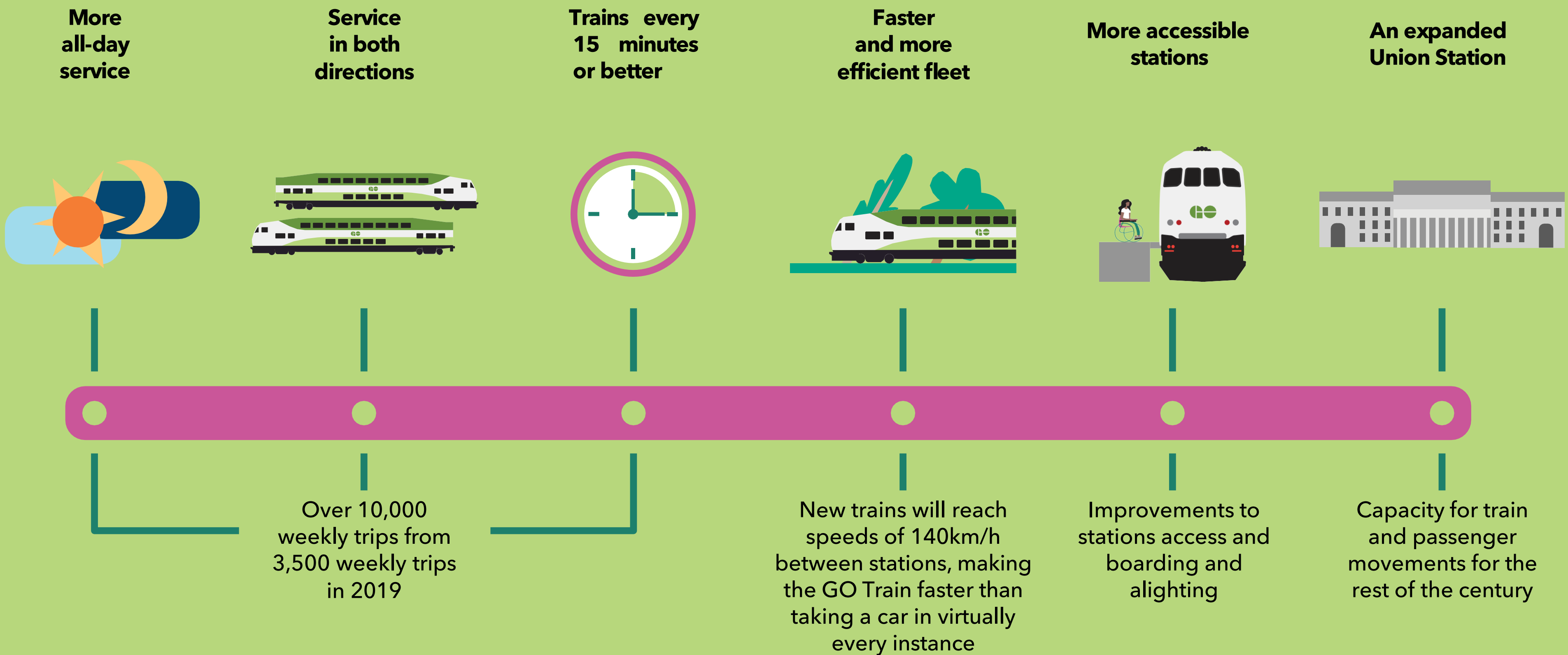
Agenda

1. Welcome
2. Project Overview
3. Construction Updates
4. Discussion
5. Contact us



Bloor-Landsowne Station: Project Overview

The GO Expansion program will provide a range of improvements across the GTHA:



Station Summary

- The new Bloor-Lansdowne GO Station will be located south of Bloor Street West, west of St. Helen's Avenue on the Barrie GO Line.
- The station is part of a better connected, more modern transit network to get you where you need to go.
- The station will be a short walk from the existing Lansdowne and Dundas West TTC subway stations and Bloor GO/UP Express Station.
- A trip from Bloor-Lansdowne GO Station to Union Station will be under 15 minutes.
- A new multi-use path along the east edge of the rail corridor linking to the Davenport Diamond Greenway via a bridge over Bloor Street West and connecting to the future West Toronto Railpath Extension to the south.



Artist rendering showing the multi-use path entrance at Dora Ave.
Final design is subject to change.

Station Features

The future station will feature:

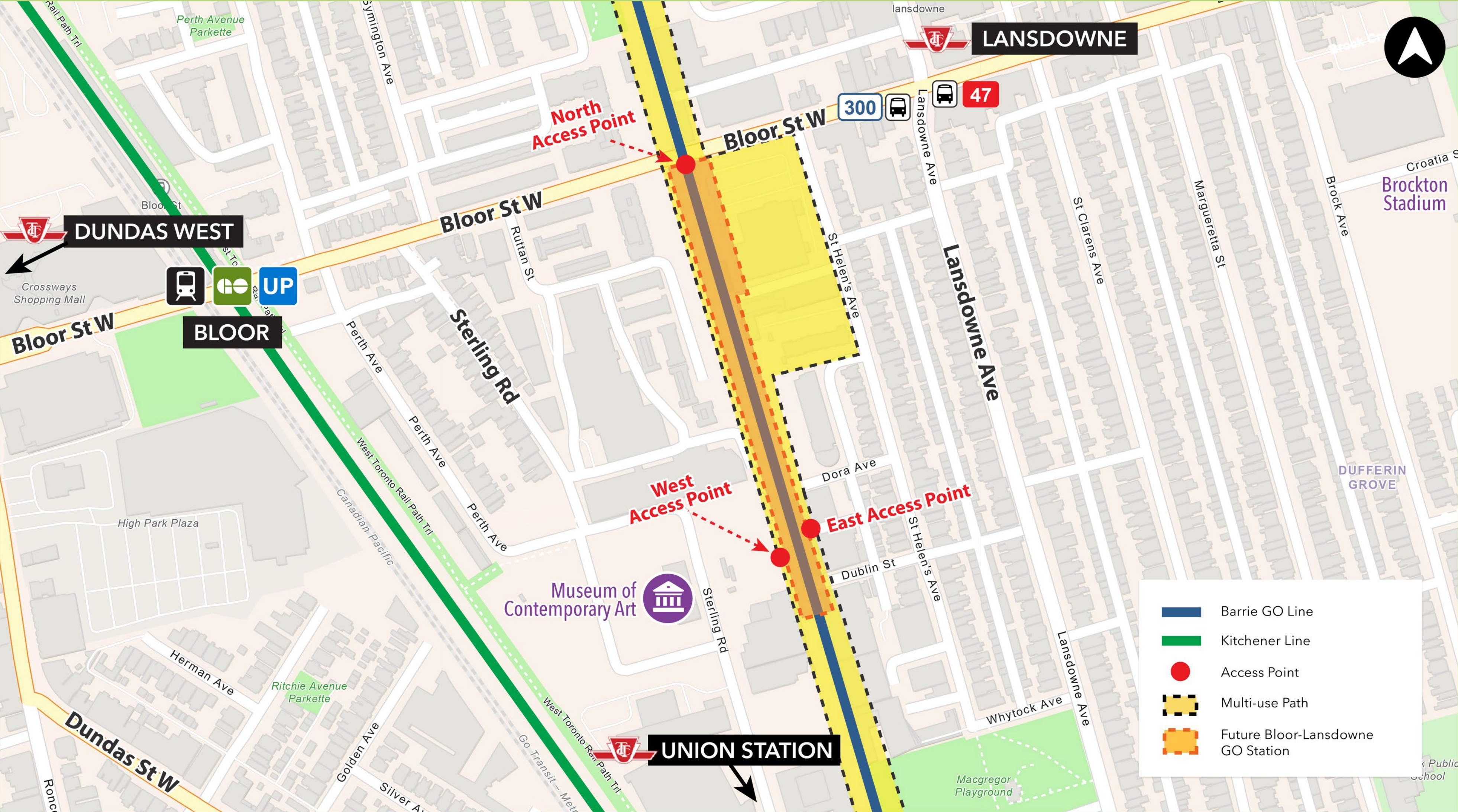
- Bike parking
- Three entryways
- Platform-level plaza with landscaping
- A tunnel connecting the east and west platforms for ease of access
- Single-train connection to Union Station
- A multi-use path adjacent to the Barrie GO Line



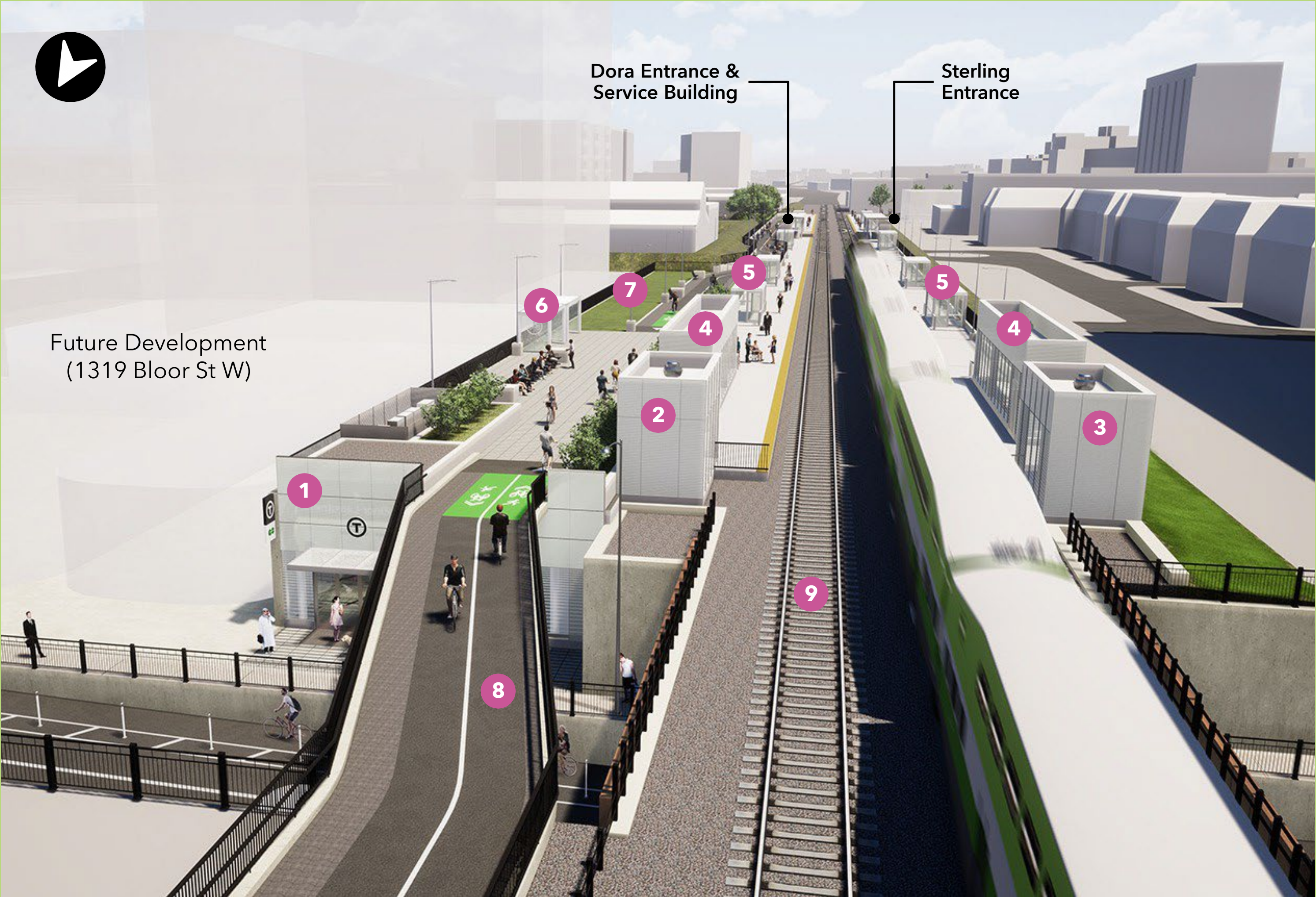
Artist rendering of the multi-use path and bridge at Bloor St W. Final design is subject to change.

Future Location

Draft. Concept design. Work in progress. Not to scale. Subject to change.



New Station Layout and Features

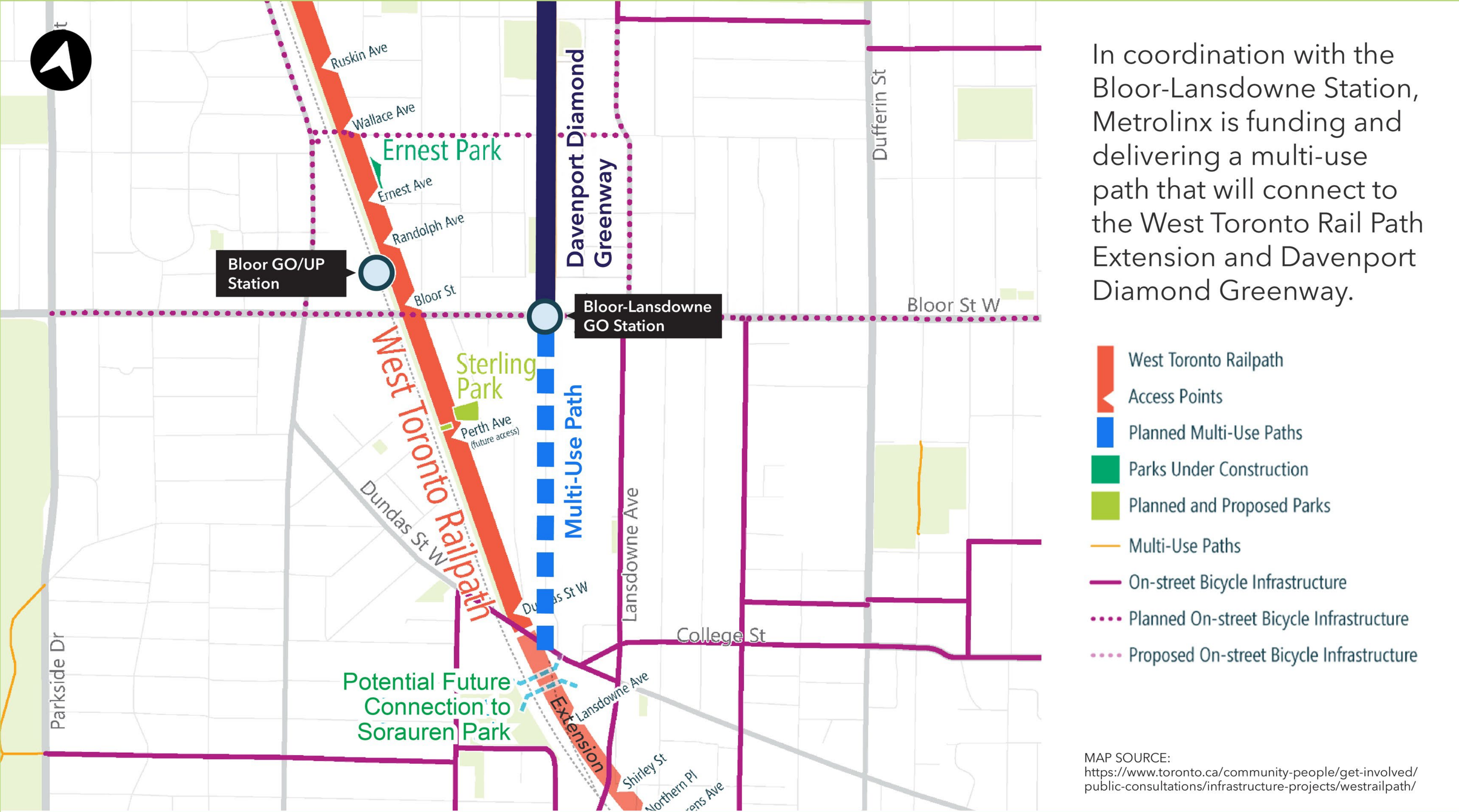


- 1 Bloor Entrance & Main Station Building
- 2 East Platform
- 3 West Platform
- 4 Stairs & Elevators
- 5 Platform Shelters
- 6 Bike Shelter
- 7 Multi-Use Path (MUP)
- 8 Bloor Street Bridge Connecting to Davenport Diamond Greenway
- 9 Barrie Rail Corridor

Digital rendering of Bloor-Lansdowne GO Station. Final design is subject to change.

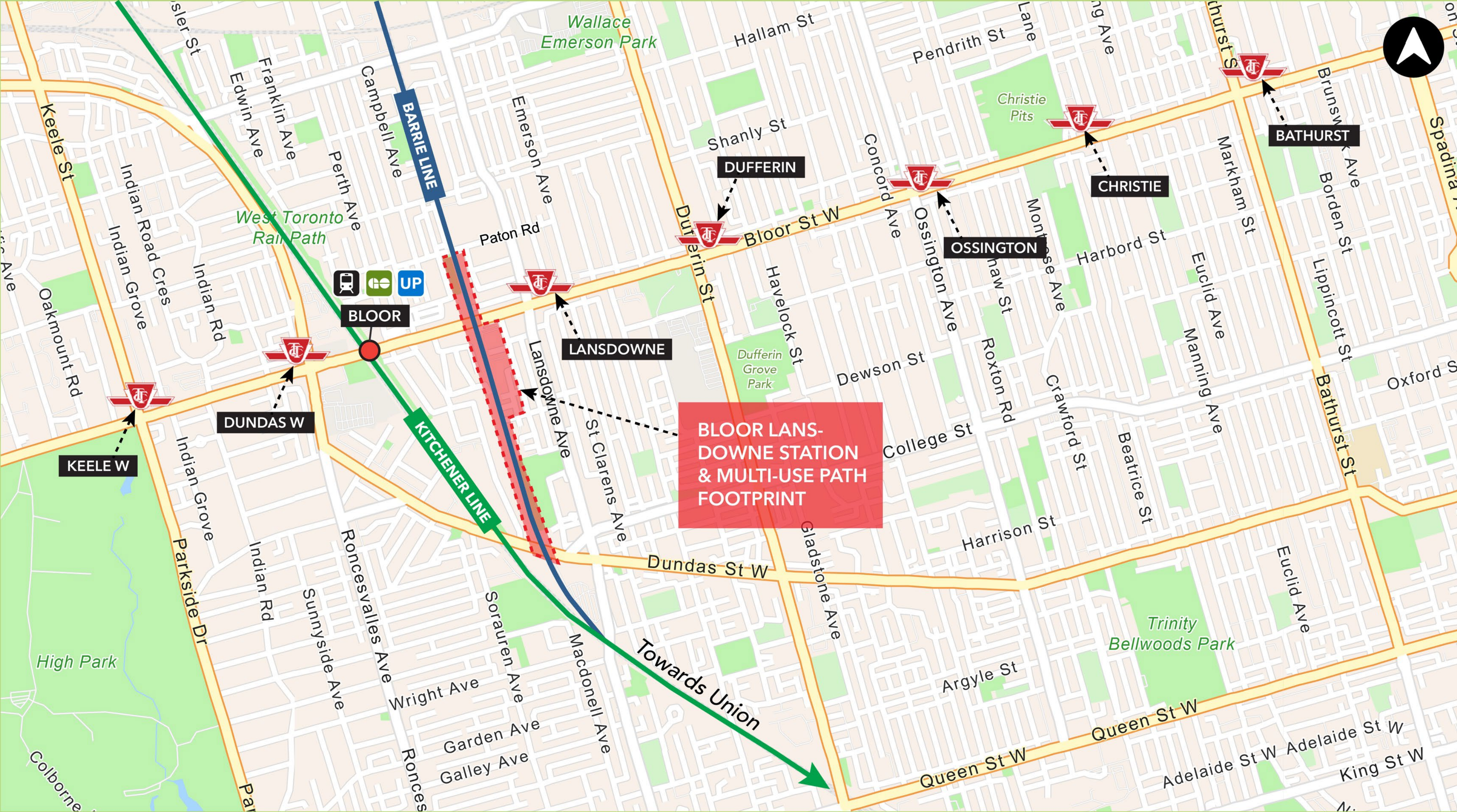
Multi-Use Path

Draft. Concept design. Work in progress. Not to scale. Subject to change.



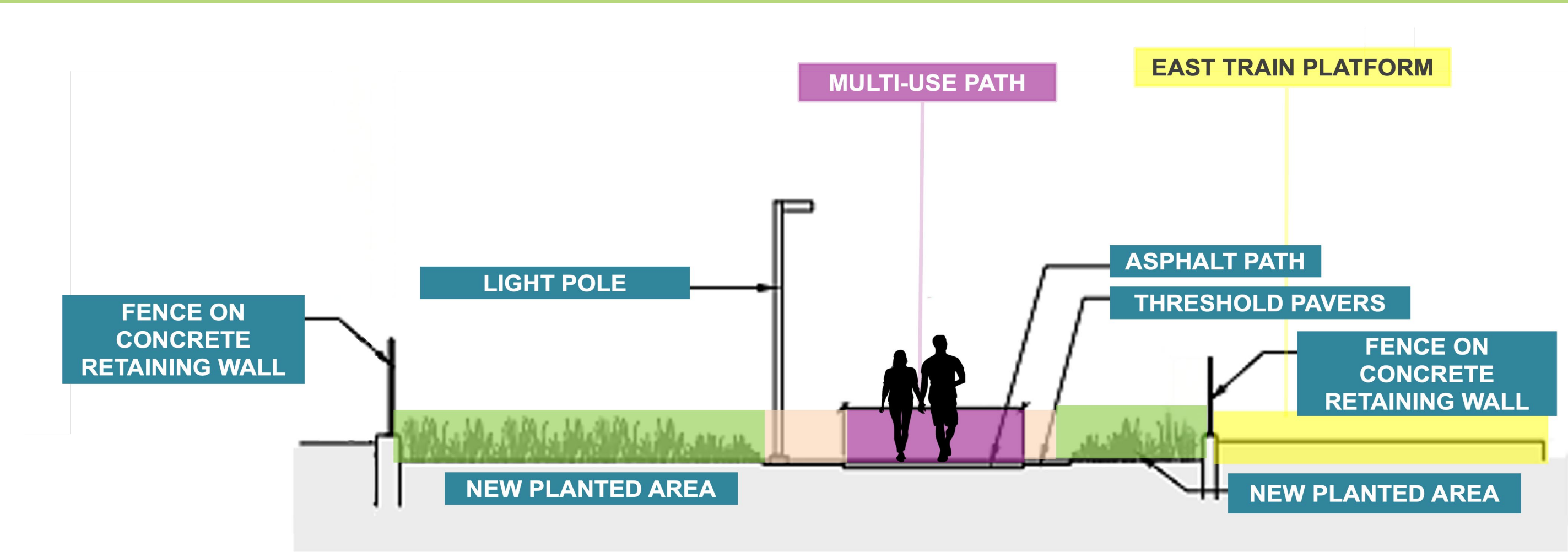
Context Map

Draft. Concept design. Work in progress. Not to scale. Subject to change.

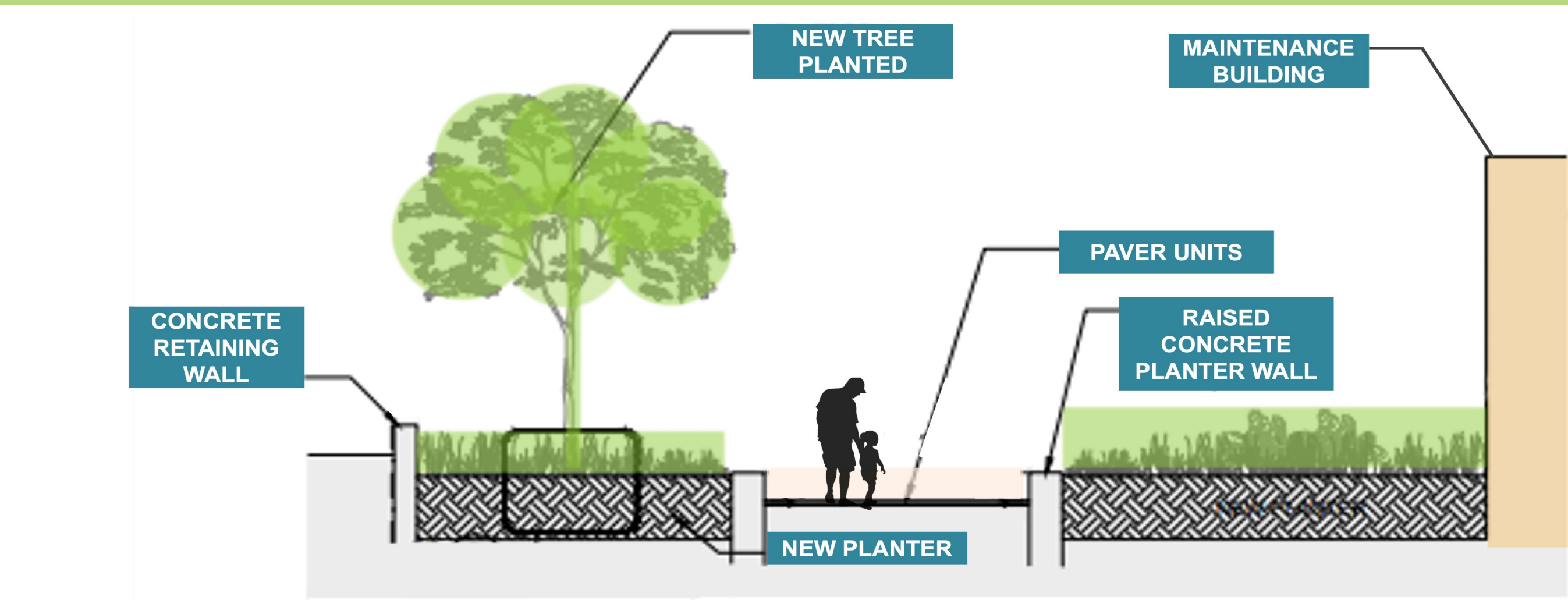


Typical Cross Section

Draft. Concept design. Work in progress. Not to scale. Subject to change.



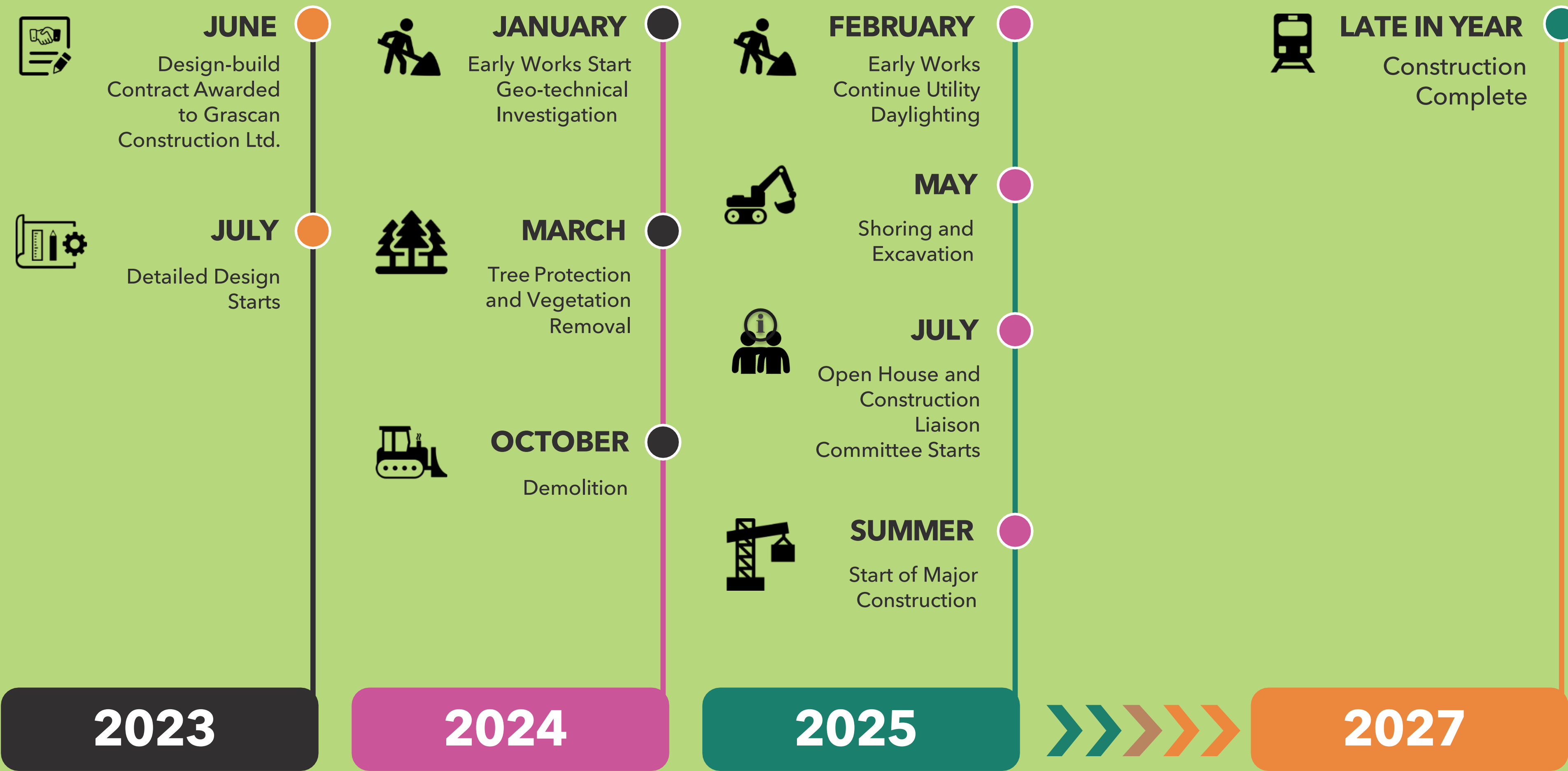
◀ Multi-use path, looking south



◀ Dora Ave. access to station, looking west

Project Milestones

 * DATES ARE ESTIMATES AND SUBJECT TO CHANGE



Construction Updates

Works Completed

- **Fence Installation**

- Survey layout of easement boundaries
- Installation of temporary fencing along easement boundaries
- Completed first week of October

- **Temporary Shoring**

- Construction of granular pad to support the drill rig
- Drilling and pouring of caissons
- Removal and disposal of spoils (excess soil from drilling)
- Completed October 3rd

- **Installation of Rail Monitoring Points**

- Placing survey targets on the rail and in the ground surrounding the track, to monitor for potential ground movement during future grading works
- Completed Oct. 10th

Works in Progress

- **Installation of Structural Caissons**

- Drilling and pouring for structural caissons that will support future MUP bridge began on October 14th
- Construction of granular pad to support the drill rig
- Expected to finish by November 7th

- **Temporary Concrete Barriers Install**

- Grading and preparatory works began on September 22 - November 14 (extension of work period), details on next slide
- Notice

- ~~**Major Track Closure**~~

- ~~October 31 - November 3, 2025~~
- ~~Weekend of continuous day and night works.~~



Changes

1. Temporary Concrete Barrier Installation (Continuous Work Zone)

- Final grading and TCB installation scheduled to take place during weekend track closure Oct 31 – Nov 2.
- In the meantime, this work is moving to weeknights. Metrolinx is exploring other options to complete this work. Work is expected to finish by the end of the year.
- An updated notice will be distributed to all affected residents within the week.

2. Continuation of Current Shoring and Excavation Works

- Excavation and shoring of main station building will continue into December.
- An updated notice will be distributed to all affected residents within the week.
- Shoring work complete by end of next week

3. Start of East Platform, Service Building, and Main Station Building construction

- To begin following installation of CWZ
- Notice with clearer timelines will be distributed in advance of the start of work

Construction Lookahead

Timeline*	Activity	Description	Hours
*dates are tentative			
August - December 2025	Main station building excavation and shoring (continued)	Installation of shoring and excavation for the main station building, pedestrian tunnel, and MUP bridge pier caissons.	Night: 9 PM - 6 AM
November 10 - December 2025	Installation of temporary concrete barriers	Final grading and TCB installation	Weeknight hours 9pm - 6am
(Start date TBD) December 2025 - March 2026	Service Building Construction (Below Ground)	Includes site preparation, shoring and excavations, foundation and utilities work, stormwater tank installation.	Daytime work hours from 7 AM - 5 PM
(Start date TBD) December 2025 - March 2026	East Platform Construction	Includes excavation, grading, pouring of concrete, foundation and utilities works, retaining wall construction.	Day and night Day: 7 AM - 5 PM Night: 9 PM - 6 AM
(Start date TBD) -December 2025 - March 2026	Service Building Construction (Below Ground)	Includes site preparation, shoring and excavations, foundation and utilities work, stormwater tank installation.	Daytime work hours from 7 AM - 5 PM
(Start date TBD) December 2025 - March 2026	Main Station Building Excavation and Shoring	Includes the use of excavators, triaxle dump trucks, and loaders.	Day and night Day: 7 AM - 5 PM Night: 9 PM - 6 AM

Mitigations

- **Noise:** sound monitoring technology will be utilized to ensure that noise levels do not exceed a decibel limit in compliance with Metrolinx's construction noise criteria for residential work.
- **Vibrations:** vibration monitors will also be in place as needed.
- **Dust:** we use water trucks to mitigate the impact of dust in the surrounding areas.

During overnight works:

- **Light:** during overnight work periods, lights will be directed towards the corridor to mitigate light pollution to residential areas.
- **Equipment:** mufflers are used where possible to reduce the noise of beeping machinery and vehicles. Equipment will also be switched off when not in use to lessen noise associated with idling.



Questions and Committee Discussion

Action Log: Summary of Sept 23

#	Question Asked/Action Item	Response/Resolution	Date/Status
1	Southern connection	No, there is only one connection at Bloor Street West. A secondary connection was included as a provisional item in the RFP process.	Sept 23
2	Price difference between project budget with or without second connection	Pricing is commercially sensitive, and we are bound by a confidentiality agreement, so it cannot be shared.	Sept 23
3	Expectation for advanced noticing	Two-week standard. Sometimes unexpected situations, like changes to the schedule, may mean we need to provide shorter notice. However, we try to avoid this at all costs.	Sept 23
4	Is it possible to stop nightwork earlier?	This would require adjusting the operating train schedule, which is not within our ability as a construction team. Grascan and Metrolinx are exploring options to reduce the amount of night work through options such Continuous Work Zones(CWZ) and other day-time track protections.	Sept 23
5	Temporary fencing at St. Helens'- no privacy or protection from dust.	Communication will be shared with the two respective properties.	Sept 23
6	Lack of noise walls	Constructability/feasibility constraints.	Sept 23
7	Reducing work hours	Reducing our work hours would heavily impact the overall schedule. We try to maximize our working window as much as possible	Sept 23
8	Adjusting train schedule	It will not be possible to cancel or adjust train schedules. That is within the purview of GO Transit, not GO Expansion.	Sept 23

Action Log: October 28

#	Question Asked/Action Item	Response/Resolution	Date/Status
1			
2			
3			
4			
5			
6			
7			
8			

Updates will be communicated to the community via:

- Mail drops of notices to residents
- Bi-weekly Toronto West E-Newsletter
- Project website
(metrolinx.com/bloorlansdowne)
- Monthly Construction Liaison Committee (CLC) Meeting
- Virtual and in-person public meetings
- Community pop-ups
- Toronto West phone number:
 - 416-202-6911
- Toronto West email:
 - TorontoWest@metrolinx.com
- X: @GOExpansion
- Metrolinx Engage

Cette présentation est disponible en français sur demande. Si vous êtes intéressé, veuillez envoyer un courriel à TorontoWest@metrolinx.com



Contact Metrolinx and Stay Connected

Metrolinx will keep the community informed by providing Bloor-Lansdowne GO Station updates and addressing questions and concerns effectively, and quickly.

Connect With Us:

Toronto West Community Engagement Team

TorontoWest@metrolinx.com

416-202-6911

E-newsletter: [Metrolinx.com/subscribe](https://metrolinx.com/subscribe)

Follow us on social media:



This presentation is available in French upon request.

If you are interested, please email TorontoWest@metrolinx.com

Cette présentation est disponible en français sur demande.

Si vous êtes intéressé(e), veuillez envoyer un courriel à TorontoWest@metrolinx.com



*Scan the QR code for Metrolinx
e-newsletter subscription*