

Union Station Enhancement Project

Major Landowners / Tenants Meeting

November 12, 2025



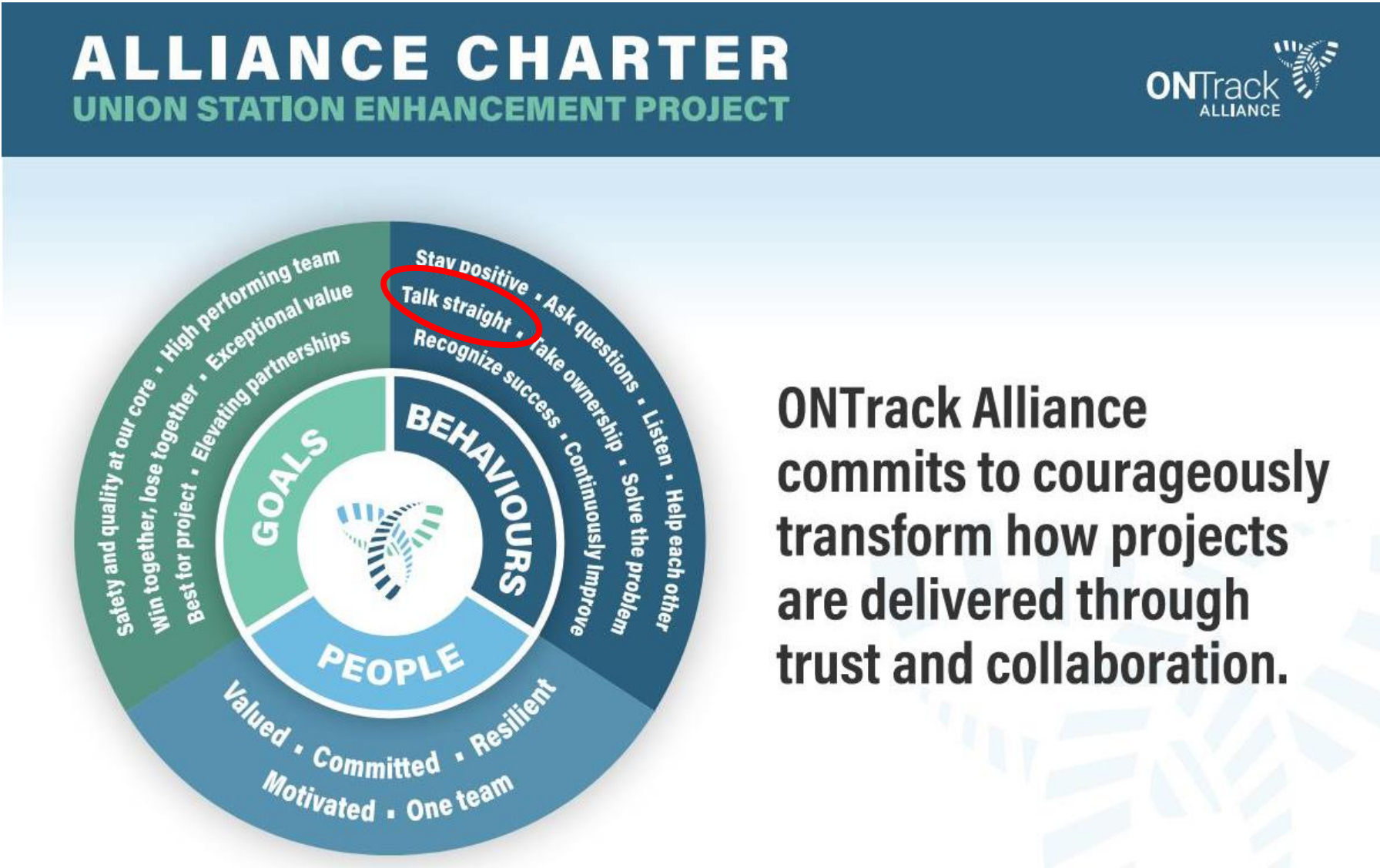
LAND ACKNOWLEDGEMENT

Metrolinx acknowledges that we connect communities by building and operating transit within the traditional lands of the Anishinaabe, the Haudenosaunee and the Wendat peoples, for whom these lands continue to have great importance.

Treaties between First Nations and governments cover these lands, and the promises contained in these Treaties remain relevant to this day.

Metrolinx and its employees are committed to understanding the history of these lands and the continued impacts of colonization and take responsibility for actions to advance reconciliation.

Metrolinx will continue to seek the knowledge, expertise and experience of Indigenous partners and commits to doing business in a manner that is built on a foundation of trust, respect, and collaboration.



ONTrack Alliance
commits to courageously
transform how projects
are delivered through
trust and collaboration.

CONCOURSE FIT-OUT (OCTOBER PHOTOS)



CONCOURSE FIT-OUT (NOVEMBER PHOTO)



AGENDA

1 UNION STATION ENHANCEMENT PROJECT (USEP) OVERVIEW

2 CONSTRUCTION UPDATES

3 CUSTOMER UPDATES

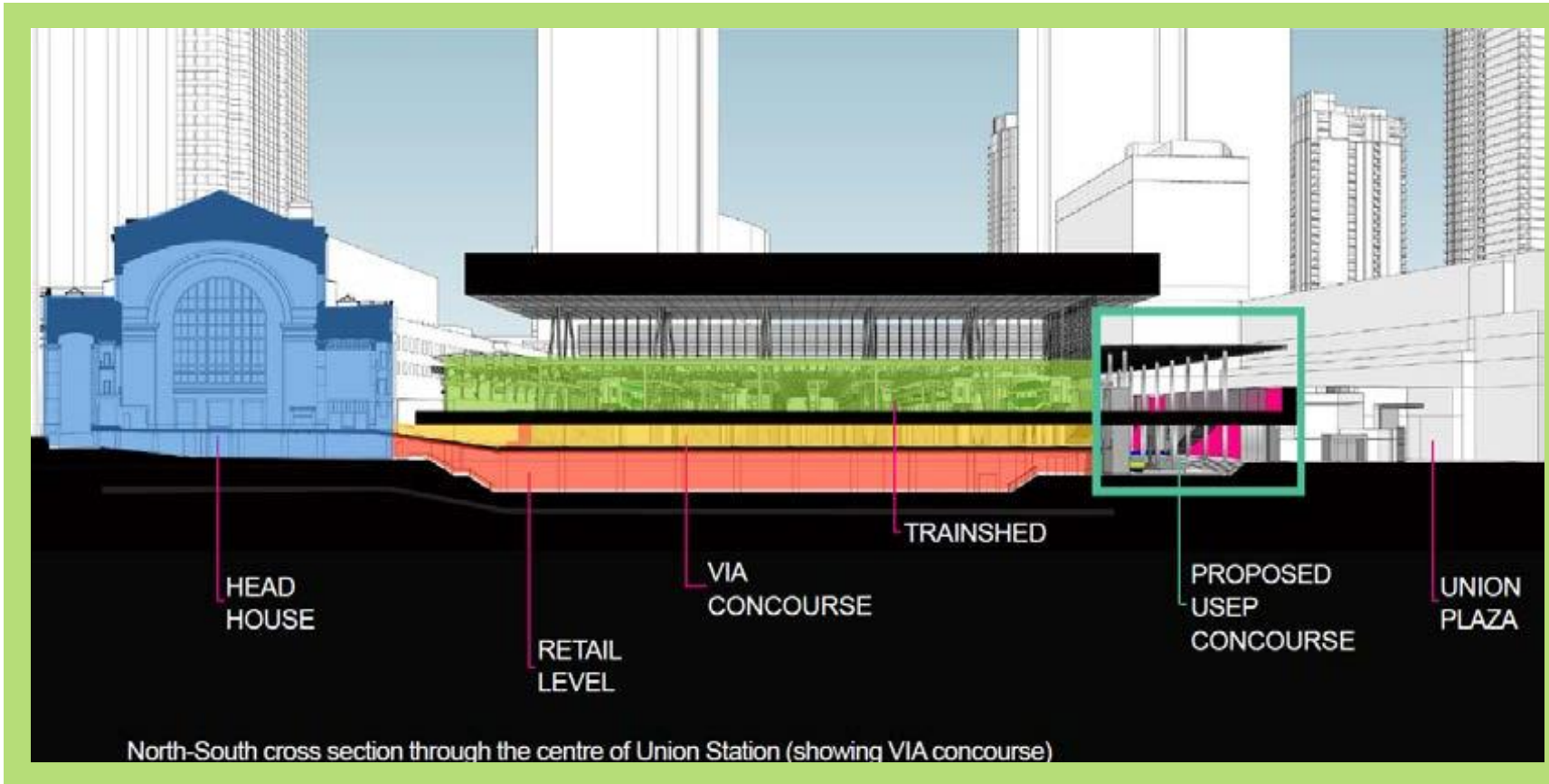
4 NEXT STEPS

Your Key OnTrack Alliance Contacts:

- Sarah Jayne Swan, Project Coordinator, Stakeholder & Communications, ONTrack Alliance, sarah-jayne.swan@wsp.com
- Josh Speedie, Communications Manager, ONTrack Alliance, Joshua.Speedie@wsp.com
- James Burchell, Advisor, Community Engagement and Issues Manager, Metrolinx james.burchell@metrolinx.com

USEP PROJECT OVERVIEW

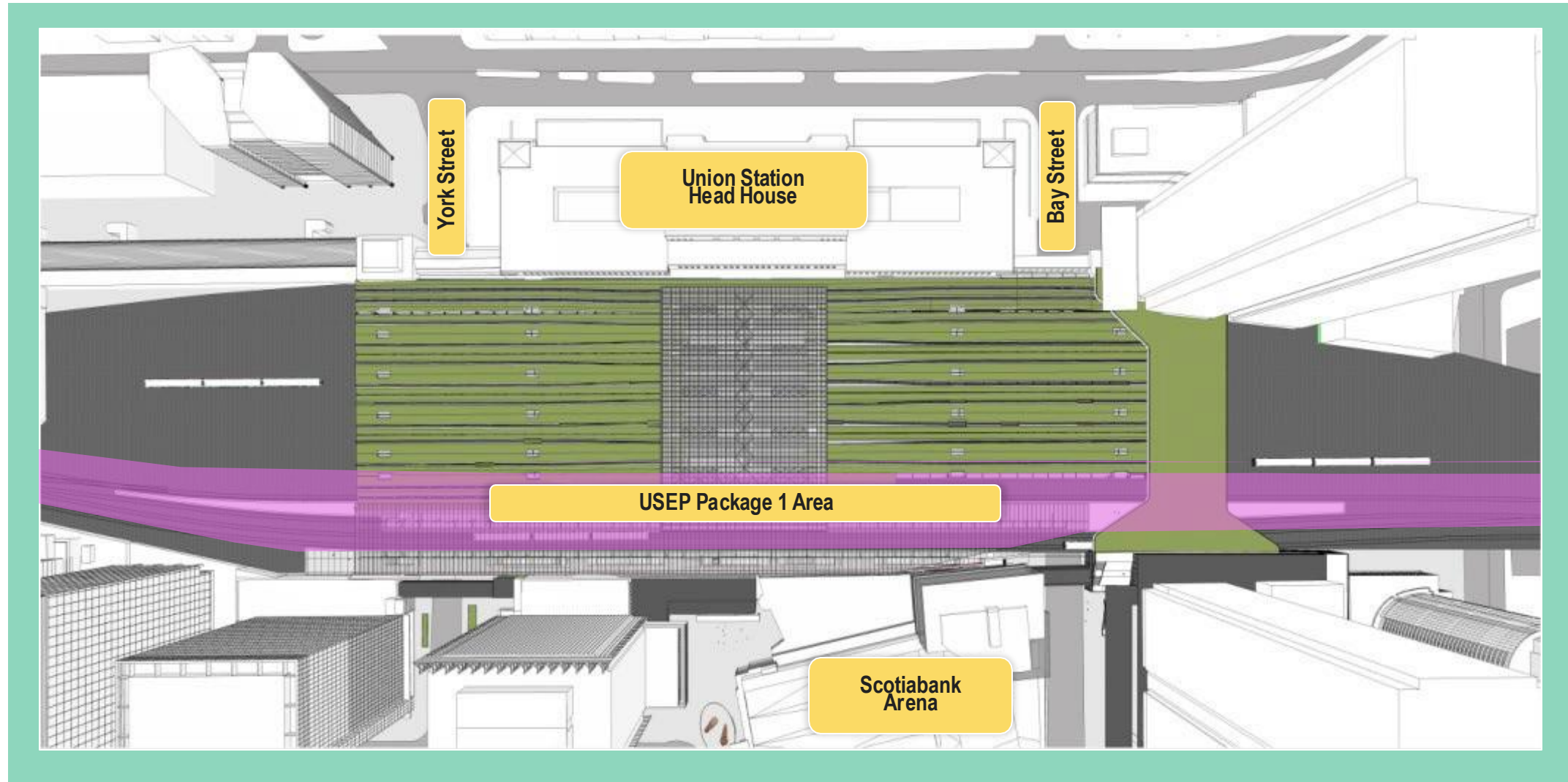
GO EXPANSION ENABLING WORKS



The Union Station Enhancement Project (USEP) is a GO Expansion Enabling Works project that is required in advance of the On-Corridor Works project in order to facilitate future track closures for the reconstruction of platforms within the existing trainshed, and to optimize the overall On-Corridor Works construction schedule.

The USEP is required in addition to the rehabilitation and upgrades already completed or near completion at Union Station.

UNION STATION ENHANCEMENT PROJECT



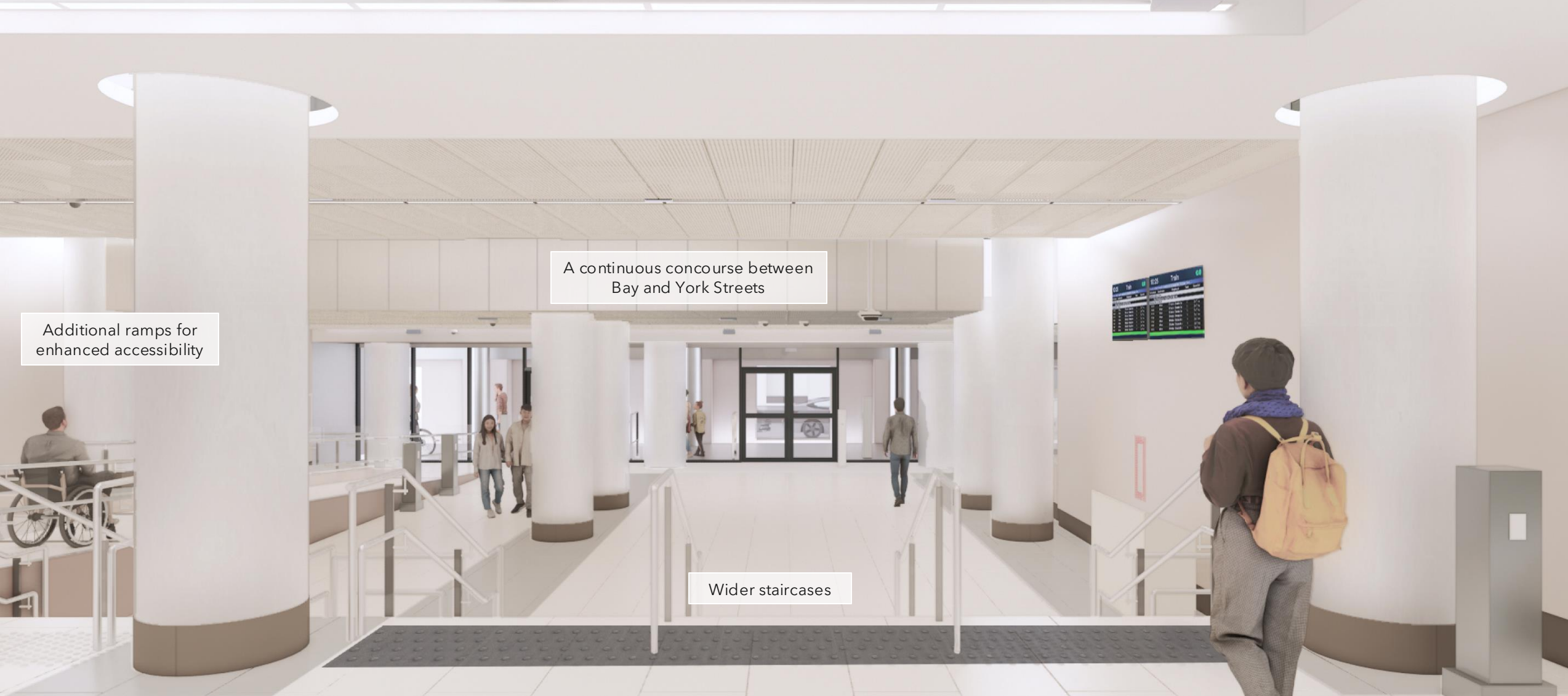
CONCEPTUAL RENDERINGS



Artists rendering. Design subject to change.

Figure: Conceptual rendering of continuous concourse from York Street to Bay Street

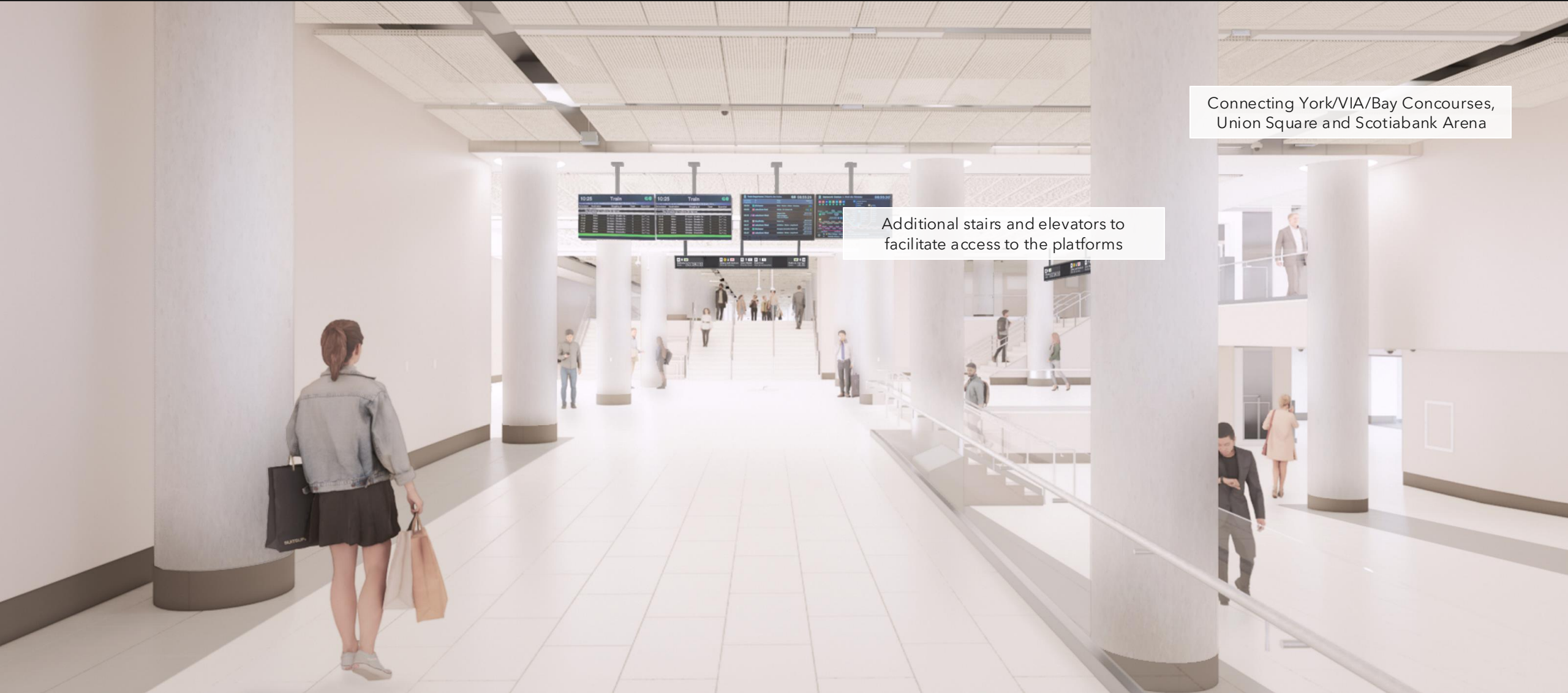
CONCEPTUAL RENDERINGS



CONCEPTUAL RENDERINGS



CONCEPTUAL RENDERINGS



Connecting York/VIA/Bay Concourses,
Union Square and Scotiabank Arena

Additional stairs and elevators to
facilitate access to the platforms

CONSTRUCTION UPDATES

UNION STATION ENHANCEMENT PROJECT CONSTRUCTION

- **Demolition, Foundation, Concourse and Track Level Activity - Phasing**
 - Progress of demolition, foundation, concourse and track level updates across Areas A - J.
- **Customer Communications**
- **Next Steps**



TRACK LEVEL - PROGRESS

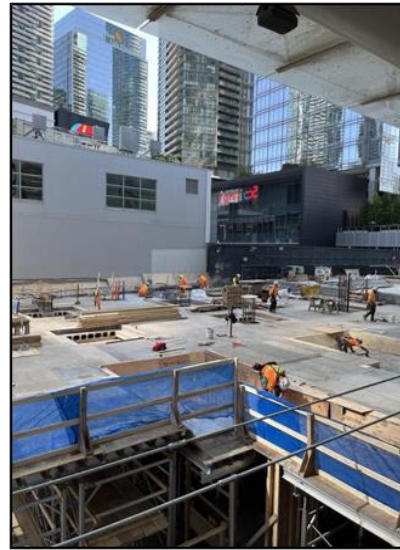
Areas F (south east facing)



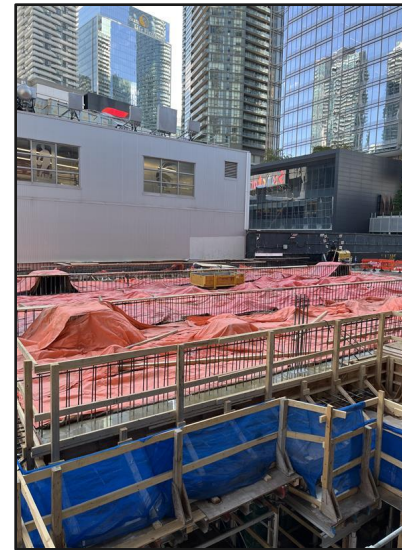
July, 2025



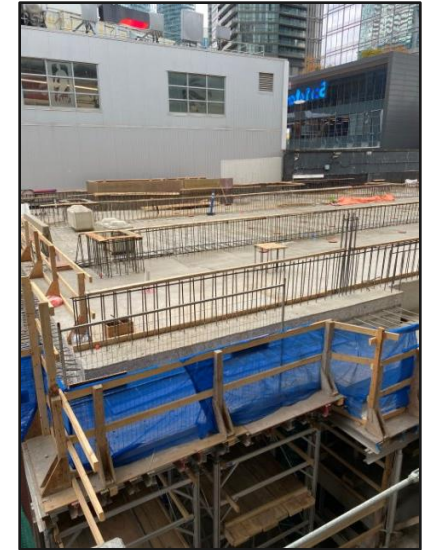
August, 2025



September, 2025



October, 2025



November, 2025

TRACK LEVEL - WEST OF YORK ST (AREA A)

- Teamway staircase rebar ongoing
- North wall poured, prep for south wall pour

Next steps:

- Prep work for abutment footing wall, underground plumbing and electrical

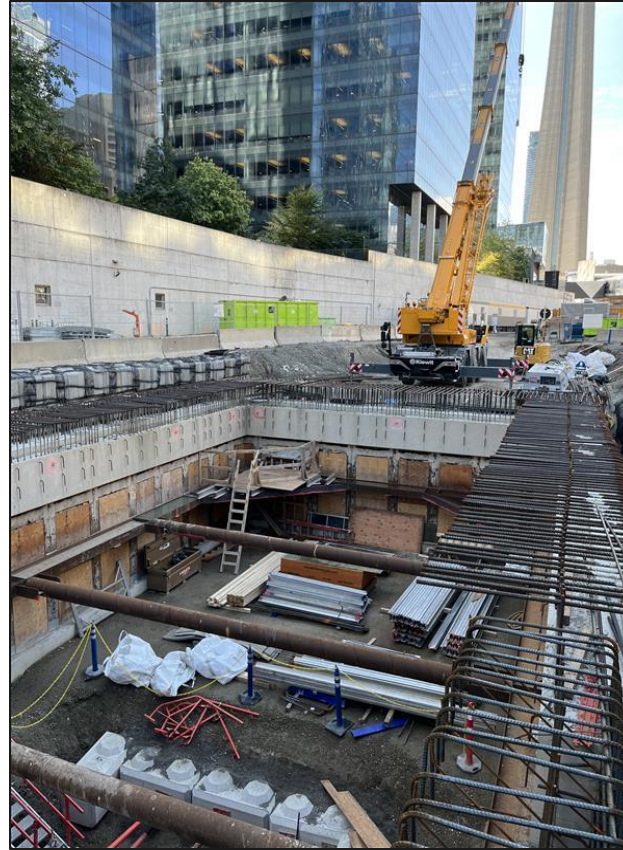


Photo: Area A
(west facing)
October 2025

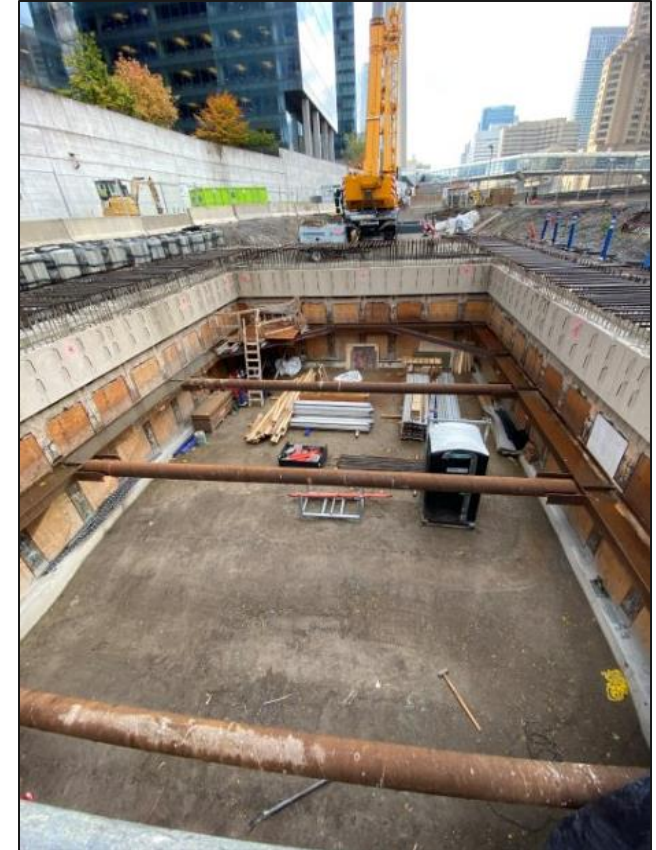


Photo: Area A
(west facing)
November 2025

TRACK LEVEL - YORK STREET TEAMWAYS (AREA B)

Enwave Scope

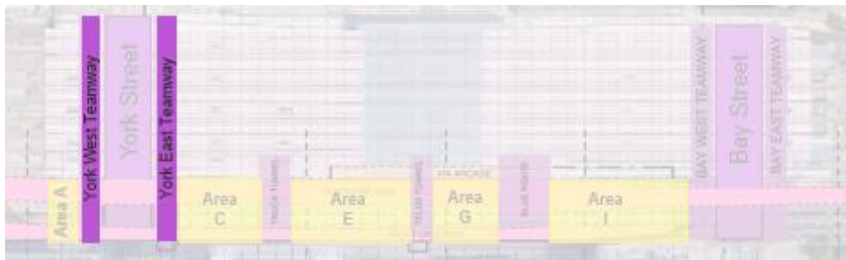
- Full closure of the south side of the YWT complete
- YWT reopened to pedestrians, minor works in the hoarding

Next Steps:

- Work on chill water pipe, electrical relocations
- Impacts to Quadreal East-facing door



Photo: YWT Large opening into Area A



TRACK LEVEL - EAST OF YORK ST (AREA C)

- Fit-out of this area is ongoing
- Block wall installation, electrical hangers and dewatering
- Staircase formwork ongoing until mid-November
- Forming of platform walls

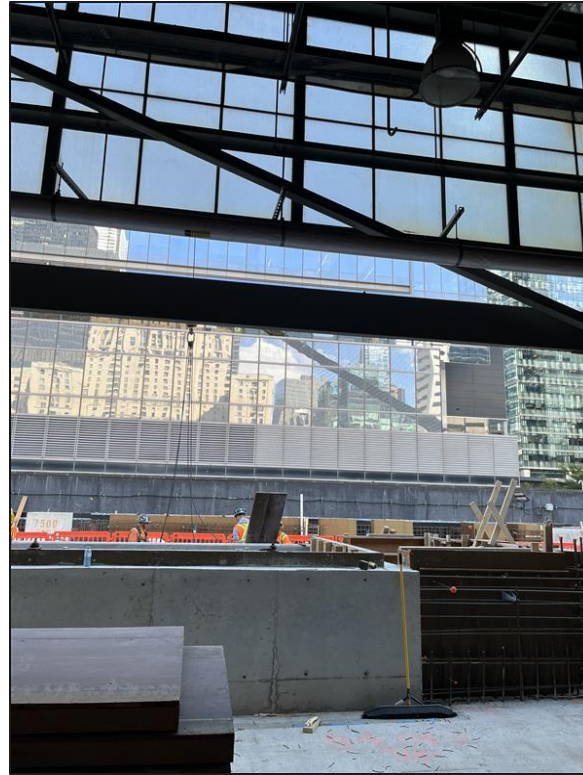


Photo: Area C October 2025

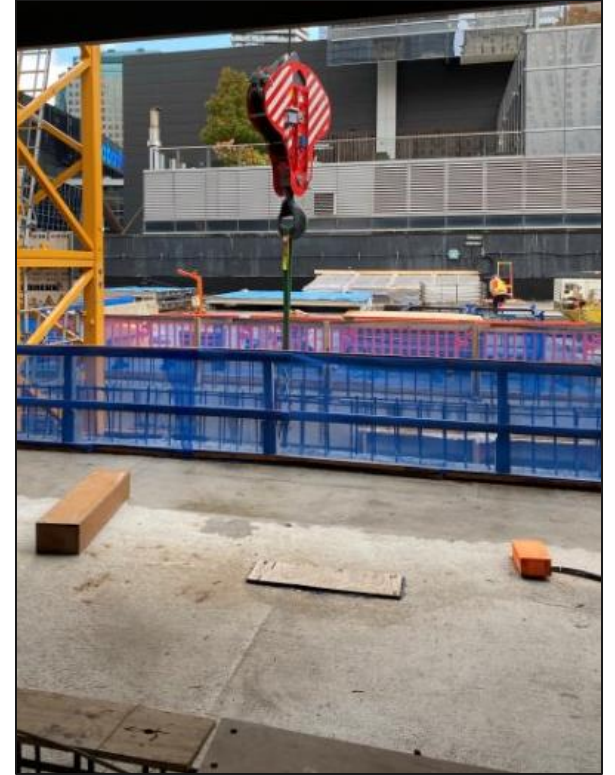


Photo: Area C November 2025

TRUCK TUNNEL (AREA D)

- Mech room 1 demo works ongoing
- Remediation at South Beam ongoing
- Staircase work ongoing
- Paint test ongoing

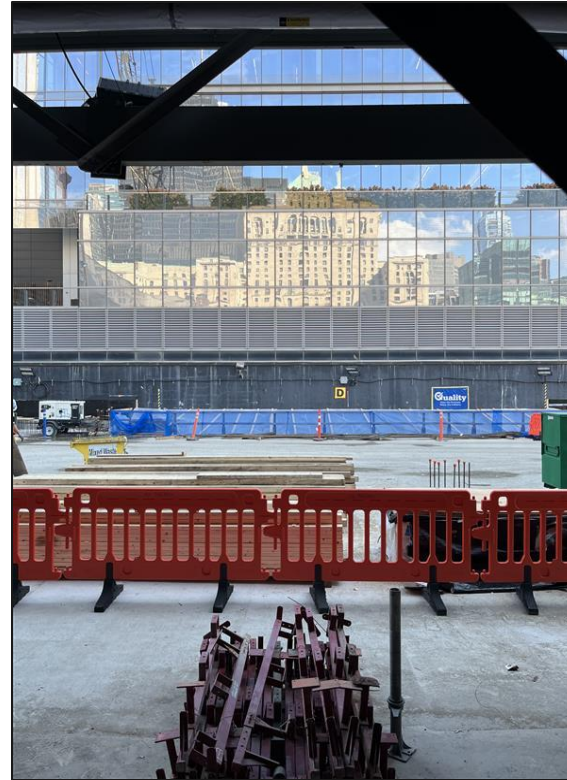
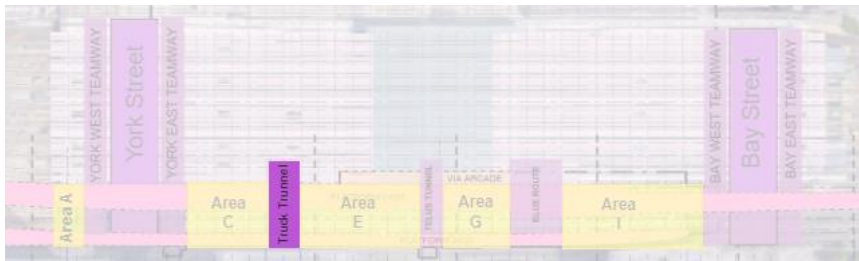


Photo: Area D, October 2025

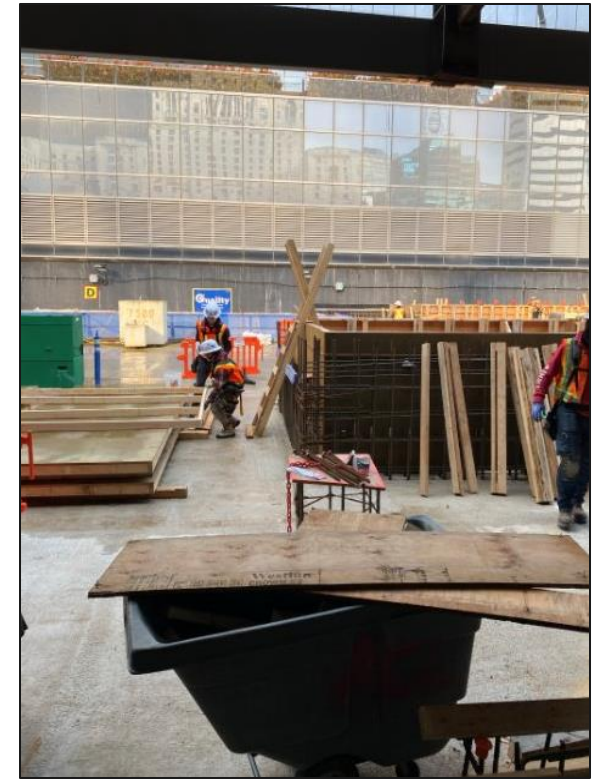


Photo: Area D, November 2025

TRACK LEVEL - AREA E

- Scanning of the rebar in the signal bunker is ongoing
- Continuing 1929 wall repairs
- Chipping of the atrium is ongoing
- Formwork for vertical access ongoing
- Formwork for concourse level staircase ongoing

Next steps: Capital formwork, mechanical and electrical anchor and hanger inserts

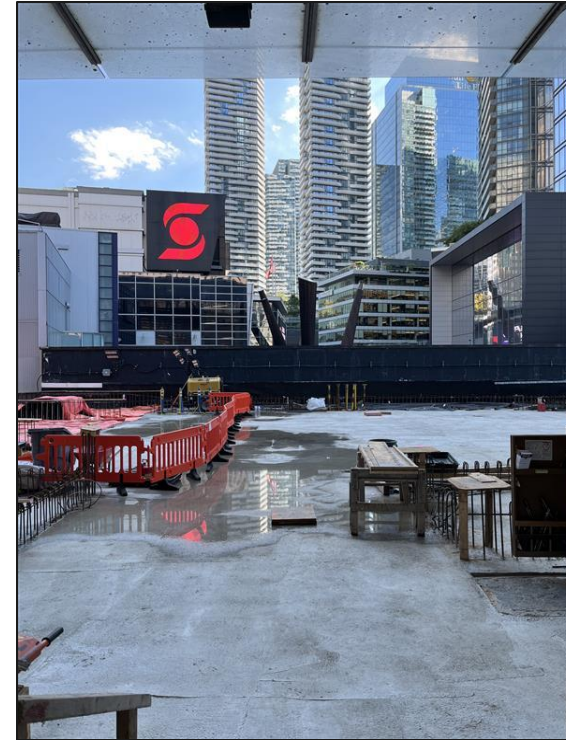


Photo: Track Slab Poured, October 2025

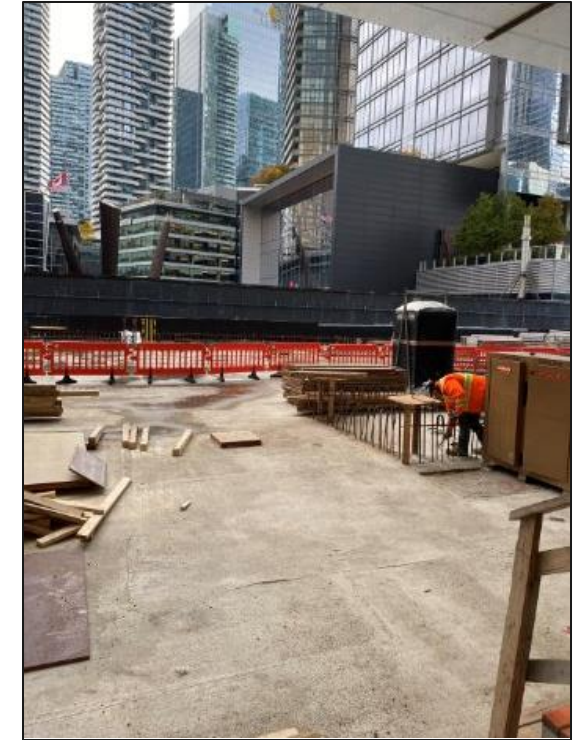


Photo: November 2025

TRACK LEVEL - AREAS F/G

South Side

- EFG track 4 stripping ongoing
- Patch and parge
- Rebar for small walls ongoing

North Side

- Chipping on the atrium supports is ongoing

Mechanical Room 2

- Chipping and formwork is ongoing

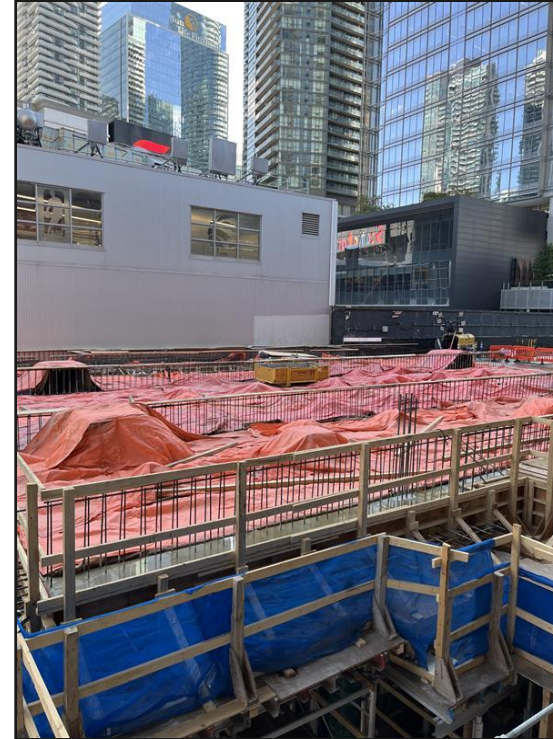


Photo: Area F/G - Shoring installation, October 2025

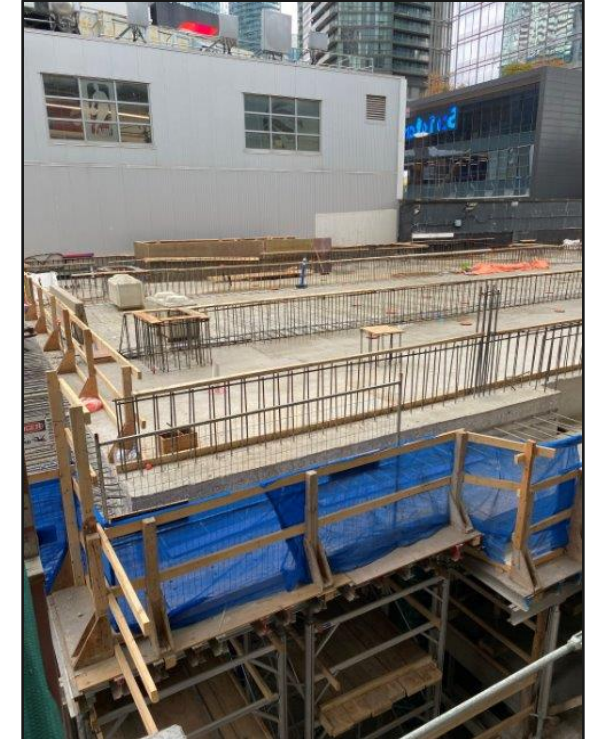


Photo: Area F/G - November 2025

TRACK LEVEL - AREA H 'BLUE ROUTE'

- Design and work plan discussions are underway, site visits and investigations ongoing
- Caisson excavations ongoing

Next Steps: Backfilling and minor works upcoming in November



Photo: Blue Route openings on the West Wall, October 2025

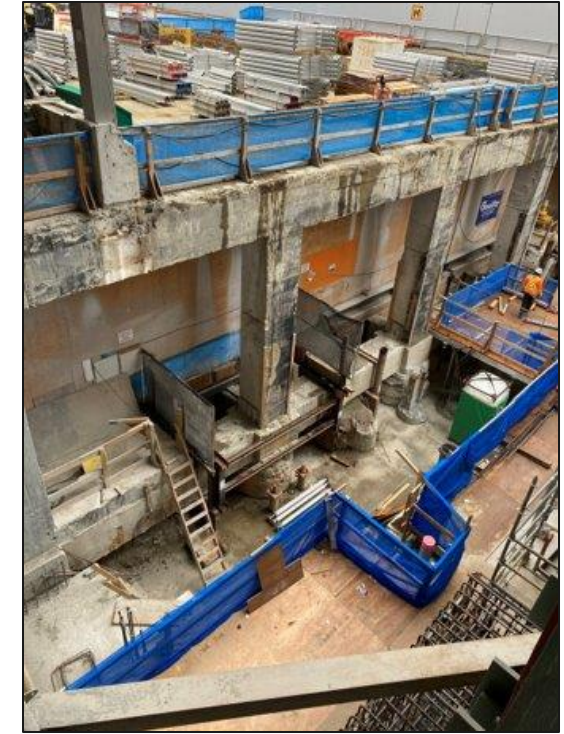


Photo: Blue Route openings on the West Wall, November 2025

BAY ARCADE - BLUE ROUTE

Purpose: To build a temporary ramp due to closure of Telus Ramp.

Updates:

- Bay Arcade temporary ramp hoarding is complete on the North side
- Continuing construction of temporary ramp within hoarding
- Auxiliary ramp curb formwork is ongoing
- Bulkhead modifications complete
- Railings fabrication ongoing

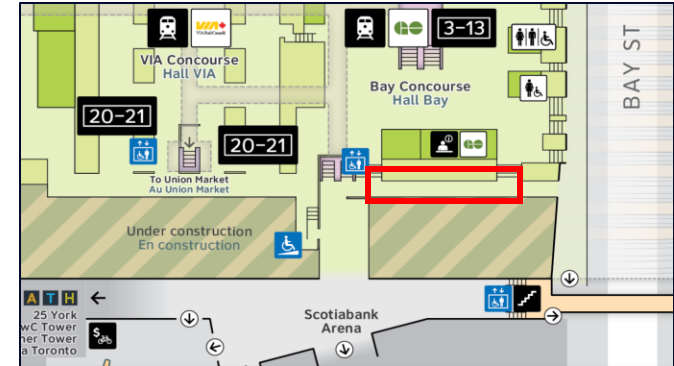
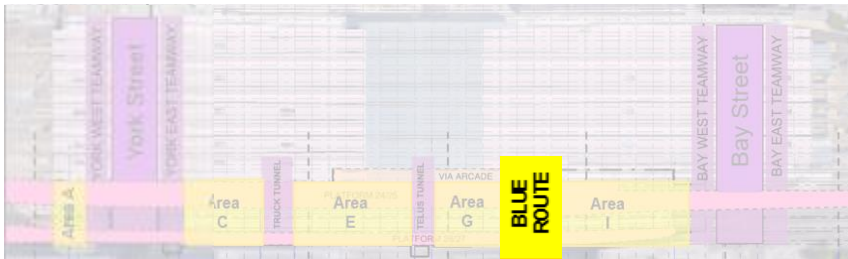


Photo: Hoarding (looking east in the Bay Arcade)
July 2025

TRACK LEVEL - AREA I/J

Area I

- Pile cap installations are underway across the area
- Waterproofing is complete, vapour barrier installation ongoing
- Formwork for columns ongoing
- Slab on grade pour complete and curing
- Wall formwork ongoing
- Mechanical Room 3: clear stone backfill is complete
- Next steps: Electrical conduits in Mech room 3, formwork and pouring cistern walls

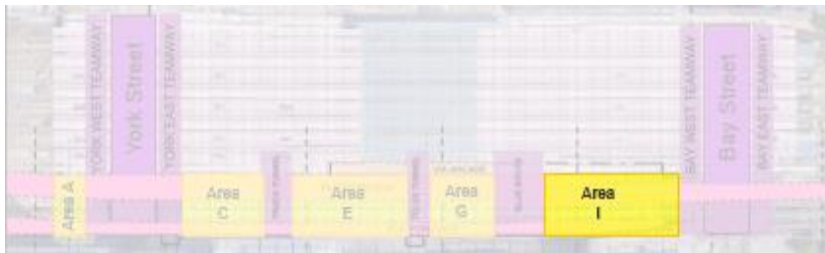


Photo: Area I, October 2025

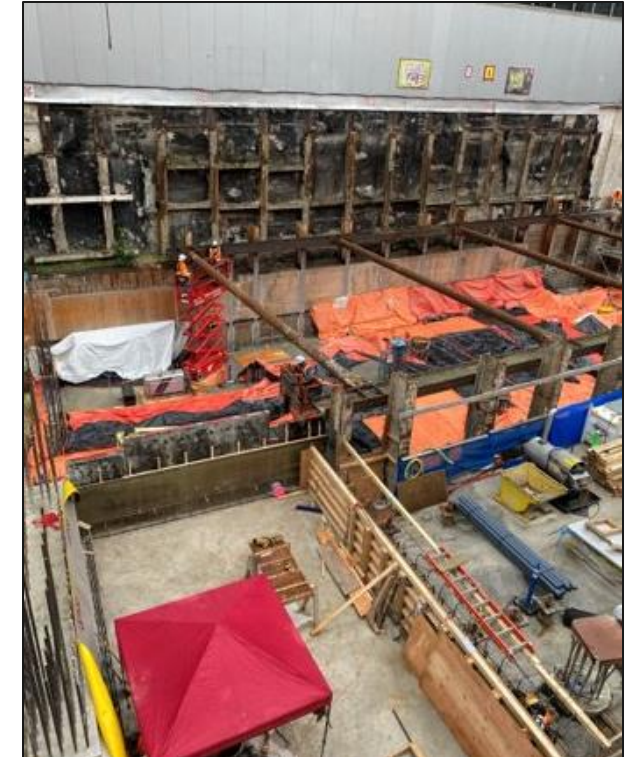


Photo: Area I, November 2025

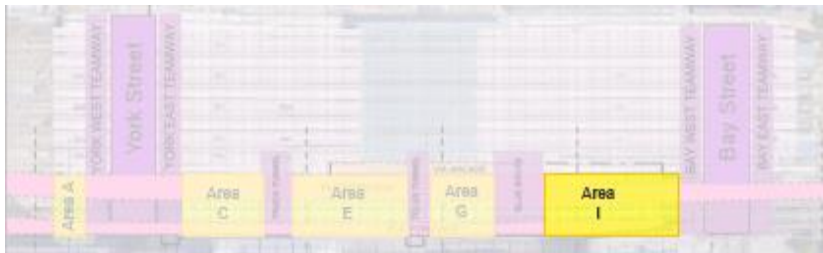
TRACK LEVEL - AREA I/J

Area J

- Bay Bridge: Work on beam ongoing, soffit and shoring ongoing
- Next steps: pour columns and form the beams



Photo: Area J, November 2025



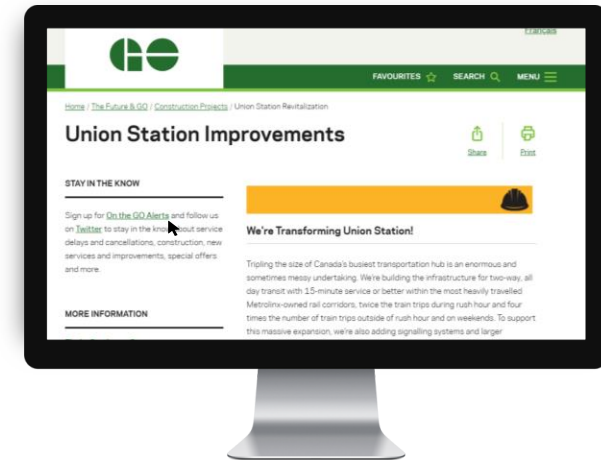
CUSTOMER UPDATES

CUSTOMER UPDATES

ENWAVE

- South section of York West Teamway closure complete. York West Teamway is open to public.
- Quadreal east-facing door impacted.

Construction updates posted on the web at:
[Union Station Improvements](#)
Register for [On the GO alerts](#) to stay in the know



NEXT STEPS

Contacts:

Sarah Jayne Swan, Project Coordinator, Stakeholder & Communications, ONTrack Alliance
sarah-jayne.swan@wsp.com

Josh Speedie, Communications Manager, ONTrack Alliance
Joshua.Speedie@wsp.com

James Burchell, Advisor, Community Engagement and Issues Manager, Metrolinx
James.burchell@metrolinx.com



@Metrolinx



@GOExpansion



<https://www.metrolinx.com/union>



TorontoWest@metrolinx.com

