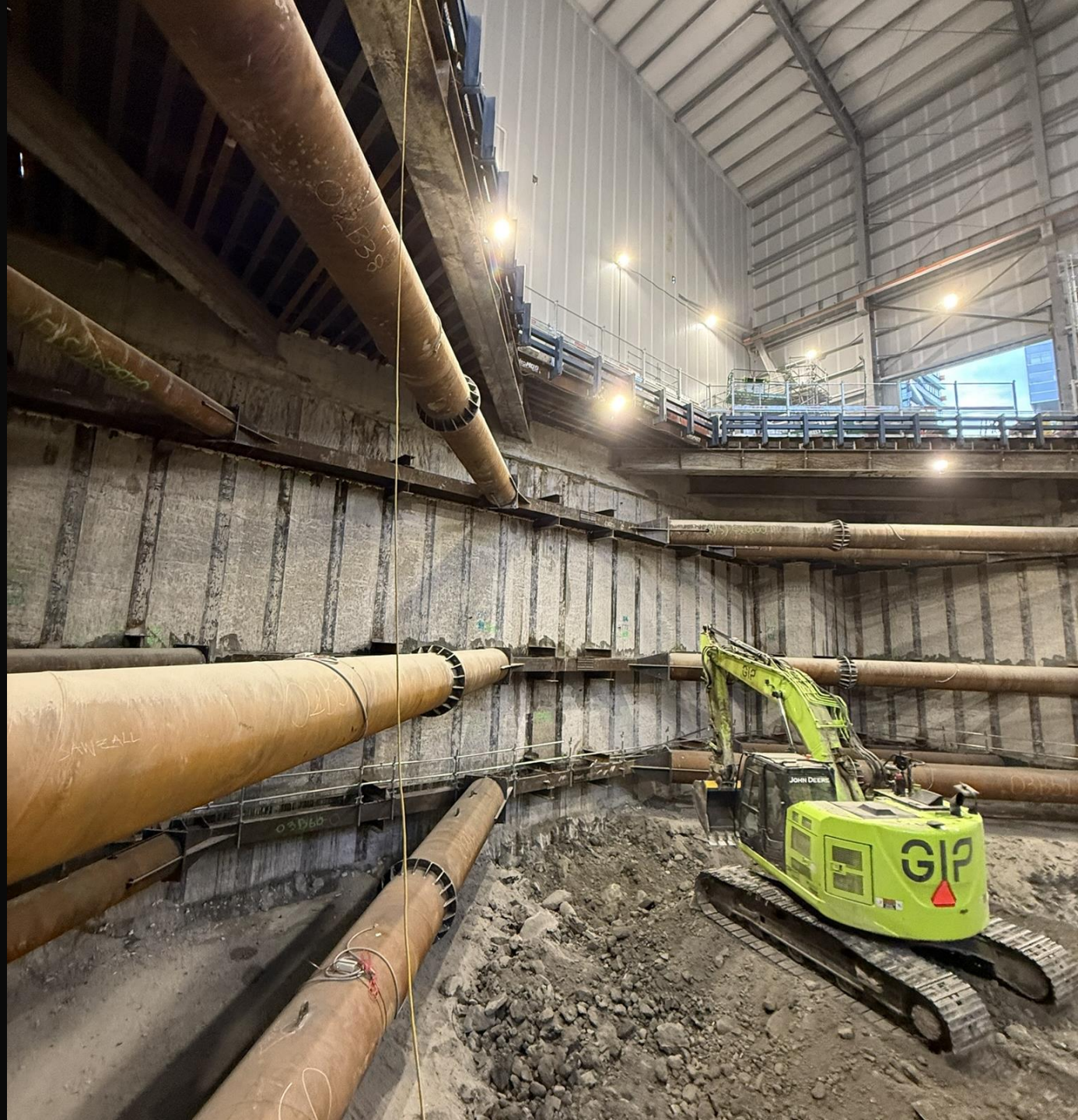


Ontario Line

Osgoode Construction Liaison Committee

November 26, 2025



Agenda

Welcome (5 min)

- Introductions
- Land Acknowledgment
- Session Guidelines
- Safety Moment

Presentation (30 min)

- Osgoode Construction Updates

Q/A and discussion (25 min)





LAND ACKNOWLEDGEMENT

Metrolinx acknowledges that we connect communities by building and operating transit within the traditional lands of the Anishinaabe, the Haudenosaunee and the Wendat peoples, for whom these lands continue to have great importance.

Treaties between First Nations and governments cover these lands, and the promises contained in these Treaties remain relevant to this day.

Metrolinx and its employees are committed to understanding the history of these lands and the continued impacts of colonization and take responsibility for actions to advance reconciliation.

Metrolinx will continue to seek the knowledge, expertise and experience of Indigenous partners and commits to doing business in a manner that is built on a foundation of trust, respect, and collaboration.

Session Guidelines

We greatly appreciate the community members who are here to take part in this public session.

To ensure that everyone can contribute to a positive and safe community experience, all participants shall adhere to the following *Code of Conduct*:

- Treat the presenters and participants with respect and understanding.
- Acknowledge and appreciate the diversity of individuals and their situations.
- Refrain from supporting or engaging in any form of discriminatory behaviour.
- To respect the privacy of CLC members, our employees and contractors, recording the CLC by any means is not permitted including the use of AI minute taking software.

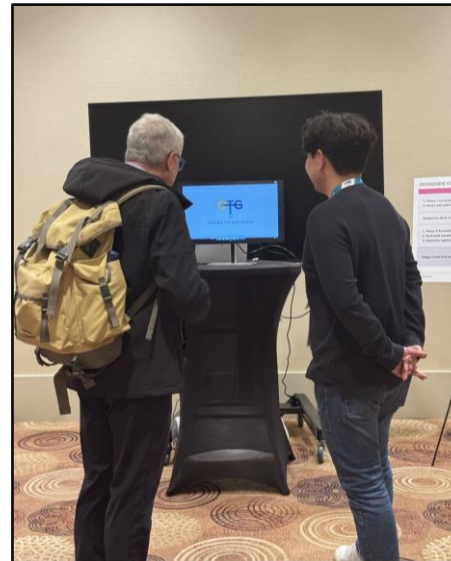
**Metrolinx is committed to fostering a safe and respectful environment.
We encourage respectful and constructive communication.**

2025 FALL OPEN HOUSE - OVERVIEW

OTG and Metrolinx recently hosted a **Fall Open House** for the Osgoode and Queen Stations communities at the Sheraton Centre Toronto on November 4, 2025.

Frequently asked questions throughout the event included:

- Attendees asked about timelines for opening, whether the project is on schedule and if the line could open in phases.
- Questions focused on station design (levels, platform screens, accessibility) construction impacts (current noise, excavation timelines, use of TBMs).
- Attendees also asked about connections to existing TTC tunnels, when Queen Street will reopen and how to access final designs or contact Metrolinx.
- Residents near Osgoode North reported reduced noise since the installation of the acoustic shelter.



Attendees viewing the information boards

SAFETY MOMENT: WINTER PREPARDNESS

Winter brings cold temperatures, snow, and icy conditions – a little preparation can go a long way to keep you, your family, and your vehicle safe.

Prepare Your Vehicle

- Winter tires grip better in temperatures below 7°C – essential for safe driving.
- Clear ice and snow from windows, mirrors, and lights before heading out.
- Keep your gas tank at least half full and your windshield washer fluid topped up.

Drive Smart in Winter Conditions

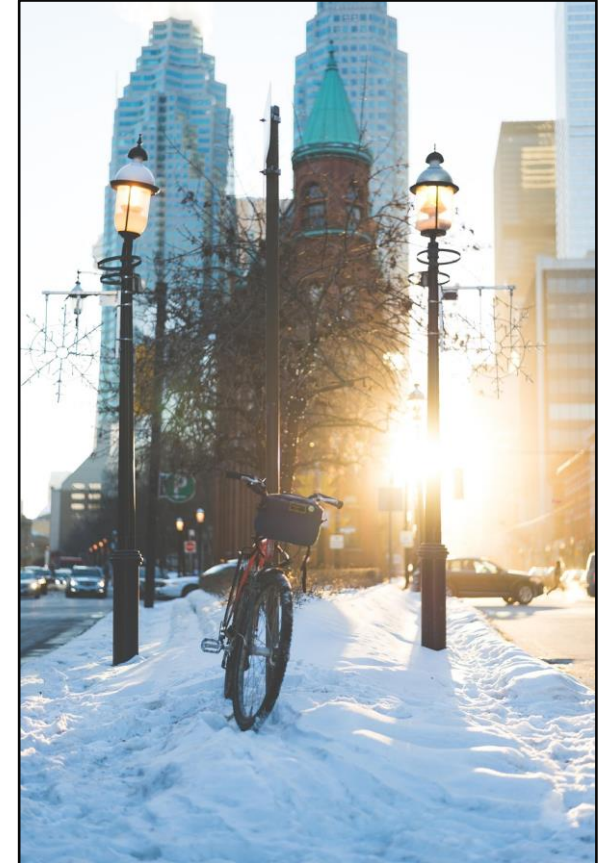
- Weather can change quickly – slow down and increase your following distance.
- If conditions are poor or visibility is low, avoid unnecessary trips.
- When in doubt, take transit or stay home.

Pack an Emergency Kit

- Keep these in your trunk: gloves, blanket, first aid kit, external battery, hand/foot warmers, pylons

Dress for the Weather

- Layer up – wear a warm coat, hat, and gloves/toque to prevent frostbite.
- For kids: Waterproof boots, snow pants, and gloves keep them warm and dry.
- Avoid cotton items that absorb water and ice.
- Watch your step – icy surfaces can be hidden. Wear boots with good traction.
- Be visible to drivers with bright or reflective clothing.

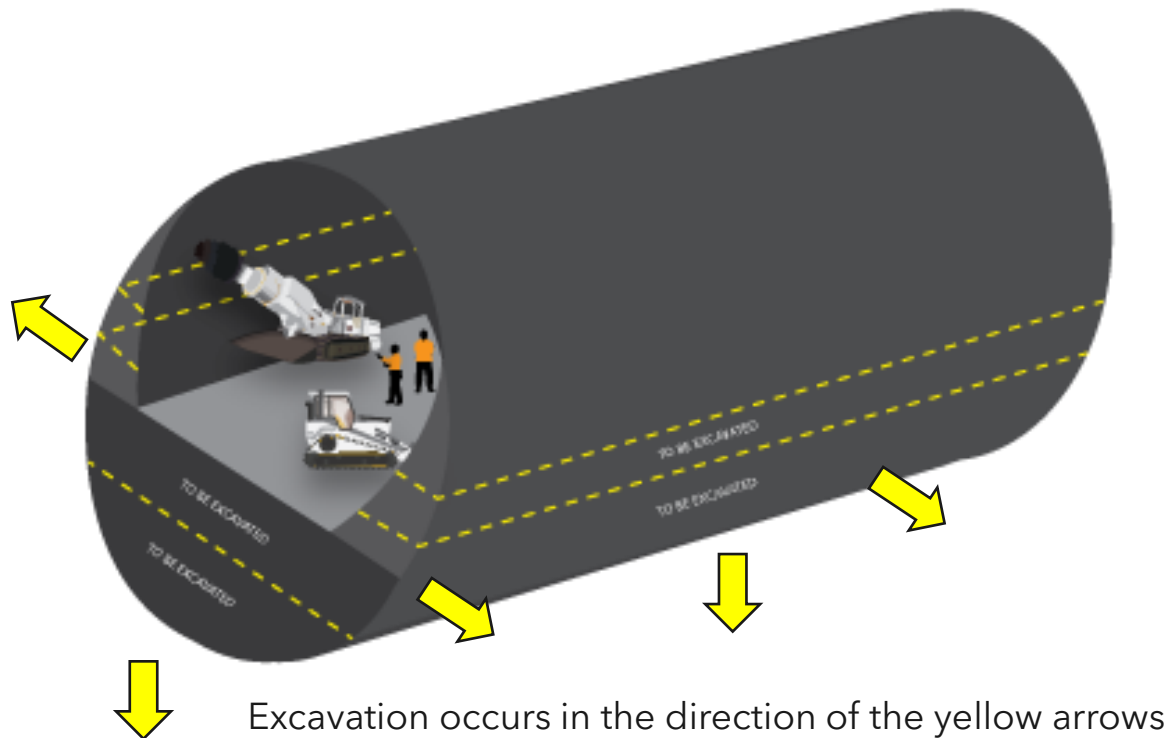


OSGOODE SOUTH CAVERN EXCAVATION IN PROGRESS

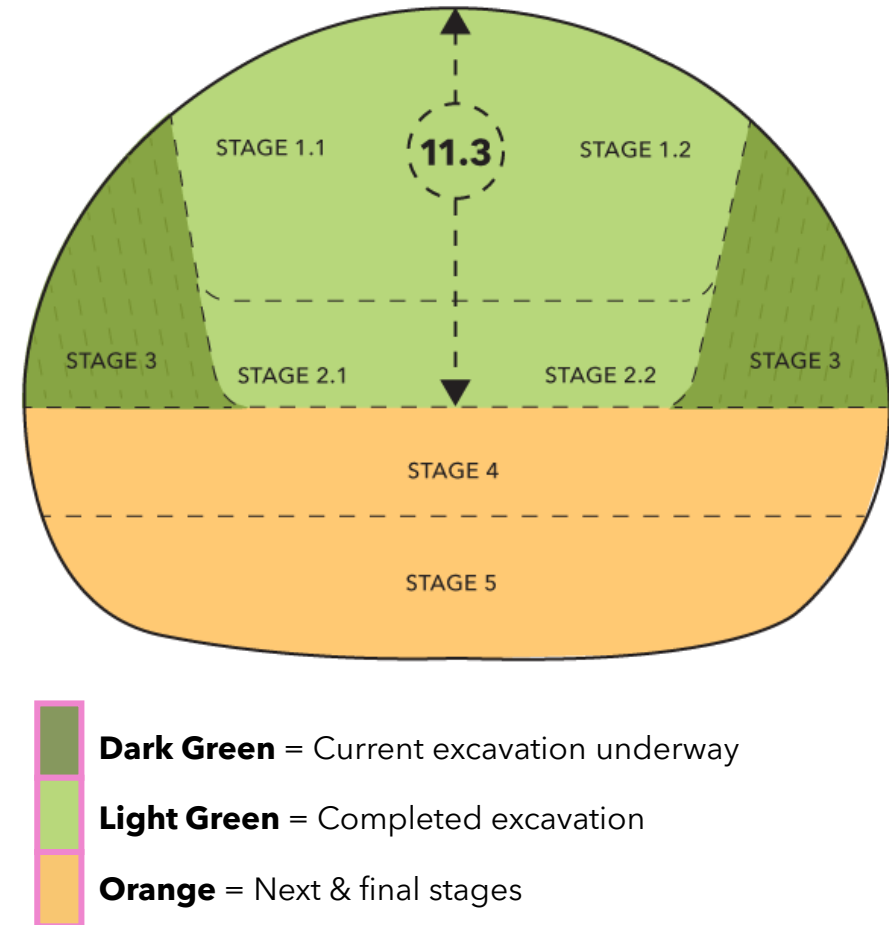


CURRENT WORKS: CAVERN EXCAVATION - SOUTH SITE

- As illustrated below, crews are sequentially widening and deepening the cavern.
- Work operates continuously, 24 hours a day, 7 days a week.
- Expected completion date: Spring 2026.



Stage 3 currently underway



CURRENT WORKS: OSGOODE CAVERN EXCAVATION PROGRESS

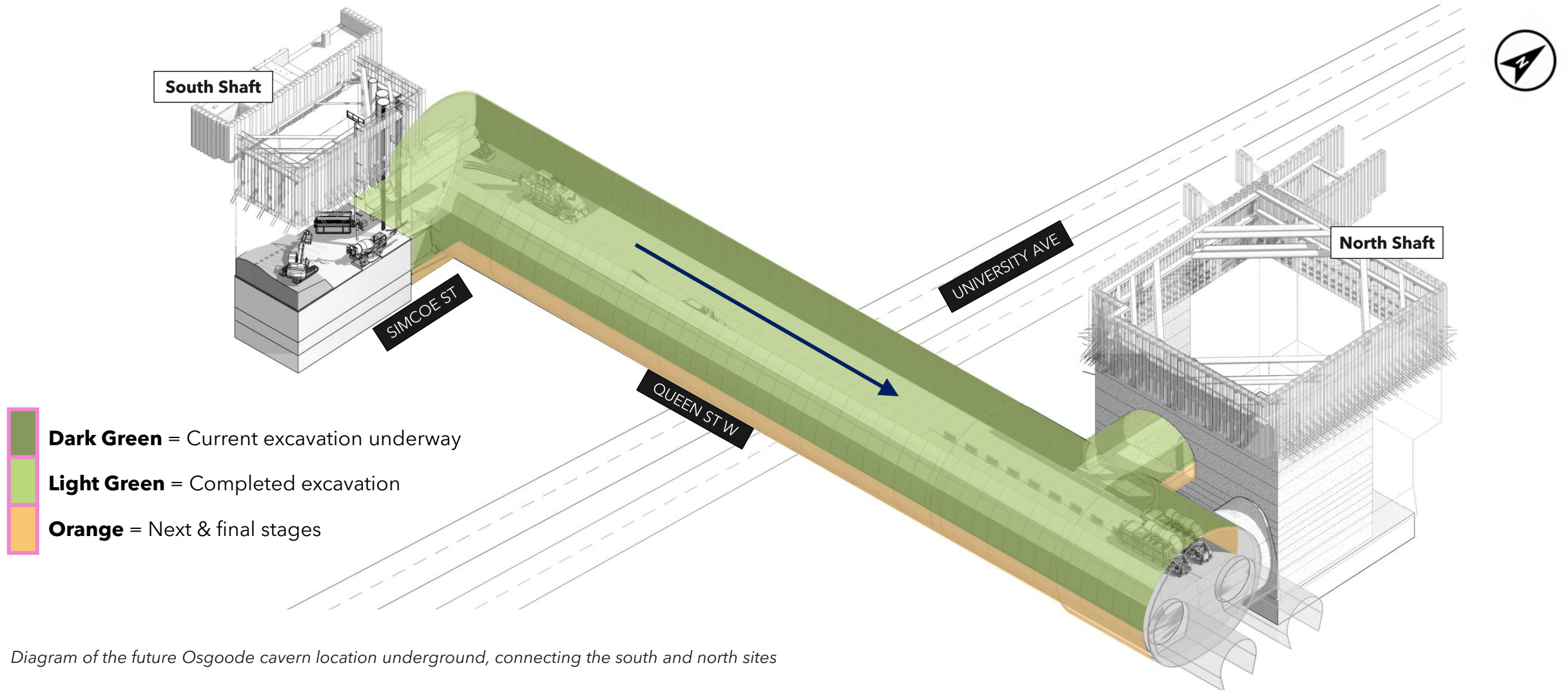


Diagram of the future Osgoode cavern location underground, connecting the south and north sites

CURRENT WORKS: OSGOOD NORTH SITE

Support of excavation works are ongoing including:

- Phase 1; **soft soil excavation and removal** nearing completion
- Phase 2; **rock excavation and removal** (to commence)
 - *Completion expected by Summer 2026
- Struts and walers
- Toe anchor installation
- Acoustic shelter cladding (soundproof panels) installation
- Crews are installing a temporary power substation on Queen Street West

*Work is underway on 24-hour shifts, seven days a week (Monday through Sunday).



Three levels of strut and walers and gantry crane above

EXCAVATION OF SOIL



CURRENT WORKS: CURRENT CLOSURES

Northbound University Avenue

(North and south of Queen Street West)

➡ Acoustic shelter installation

- Fridays 9 p.m. to Mondays 5 a.m.: Intermittent closures of the pedestrian path, bike lane, and centre lane for acoustic shelter and crane installation.
- Monday to Friday nights, 9 p.m. to 5 a.m.: Closure of the pedestrian path, bike lane, and right lane north of Queen Street West.

Traffic changes: South of Queen Street West, cyclists and vehicles will share the right lane for right turns. The left lane remains open for through or left-turn movements.



All traffic, cycling, and pedestrian routes are expected to be fully reinstated by Dec. 1, 2025



CURRENT WORKS: CURRENT CLOSURES

University Avenue (Northbound and southbound)

➡ Signage installation

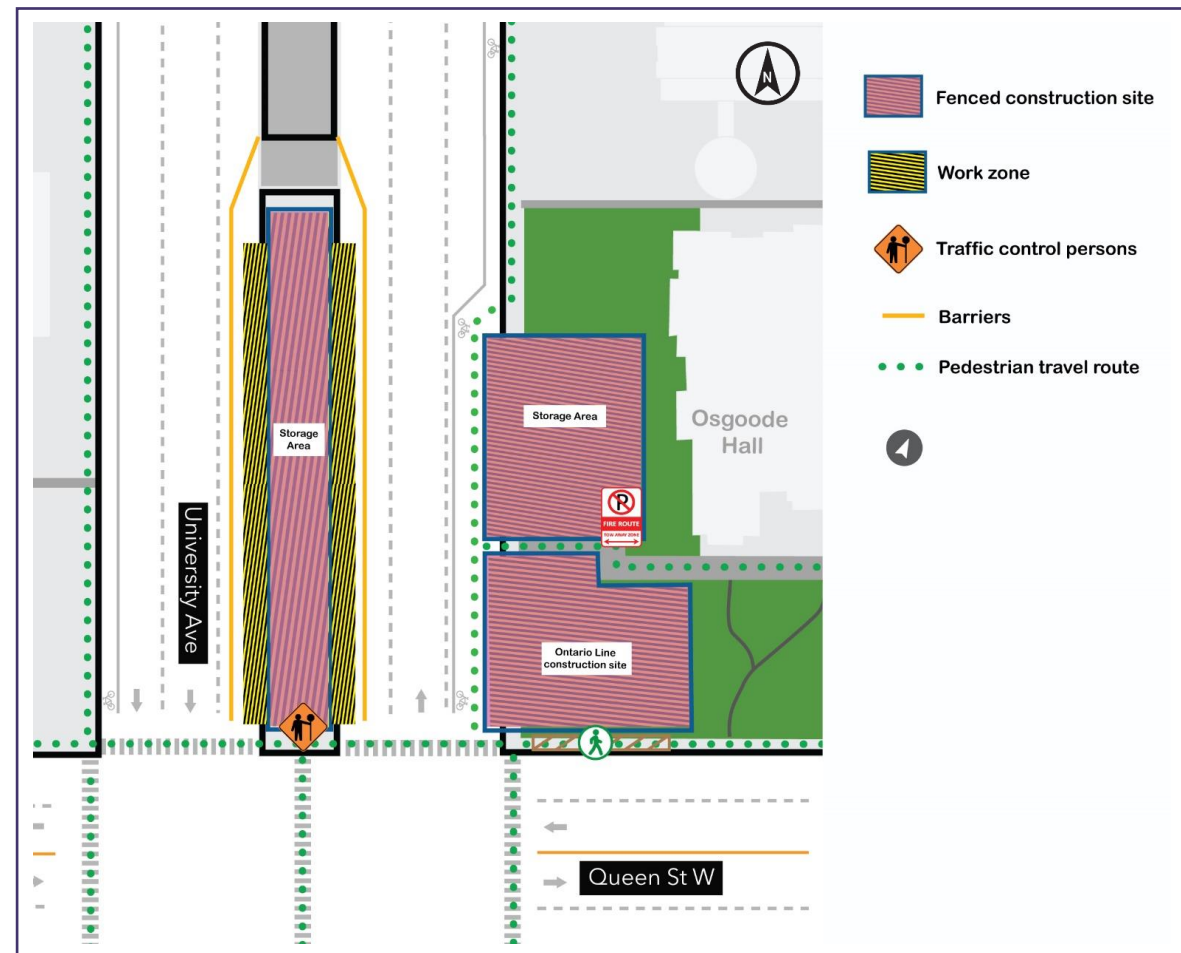
- As early as Dec. 1 to Dec. 5, 2025
- For up to one week
- Fridays 9 p.m. to Mondays 5 a.m.:
- Intermittent closures of the inside lanes for signage panel installation in each direction.
- One lane closure at a time.

Traffic changes: Southbound lanes on University Avenue will be reduced from three lanes to two for the length of the centre median during the closure.

Northbound lanes on University Avenue will be reduced from two lanes to one for the length of the centre median during the closure.



All traffic, cycling, and pedestrian routes are expected to be fully reinstated by Dec. 5, 2025



PROGRESS AT THE NORTH AND SOUTH

ONTARIO TRANSIT GROUP

OSGOODE NORTH

2025



Upcoming work

EIGHT WEEK LOOK-AHEAD: December 2025 – January 2026

#	Activity	Expected Start	Location	Expected Duration	Impact	Hours of Work	Mitigations
1	Installation and commissioning of acoustic shelter and gantry crane	Started/ongoing	North site	1 week	Vibration, noise, air quality, temporary sidewalk closure	Monday to Sunday, 24 hour/day	Acoustic shelter, hoarding. Dust mitigation includes misting, sweeping. Noise and air quality monitoring. Erosion and sediment control.
2	Excavation & hauling; soft soil (nearing completion).	Started/ongoing		5.5 months	Vibration, noise, air quality		
3	Excavation & hauling; rock level	December		5.5 months	Vibration, noise, air quality		
4	Installation of temporary power	Started/ongoing		Ongoing	Noise, temporary sidewalk closures		
5	Pedestrian walkway (between the construction area)	Started/ongoing		Two months	Noise		
6	Cavern excavation and construction of headwalls	Started/ongoing	South site	3 months	Vibration, noise, air quality		Acoustic shelter, hoarding. Dust mitigation includes de-duster, misting, sweeping. Noise and air quality monitoring. Erosion and sediment control.

*Note: All dates and times are subject to change as construction planning progresses

Discussion

KEEPING YOU INFORMED

Metrolinx will keep the community, residents and businesses informed by providing project updates, seeking input and feedback, while addressing questions and concerns effectively and quickly.

Next CLC meeting: January 28, 2025

Connect with us:

- Mark Clancy, Senior Manager, Community Engagement
- Libaan Geedi, Advisor, Community Engagement

Email: OntarioLine@metrolinx.com

Telephone 24/7 @ 416-202-5100

Follow us on social media:

X (formerly known as Twitter) / Facebook / Instagram: @OntarioLine



*Scan here to sign up
for the Ontario Line
e-newsletter*



*Scan here to explore
Ontario Line CLC
documents*

