

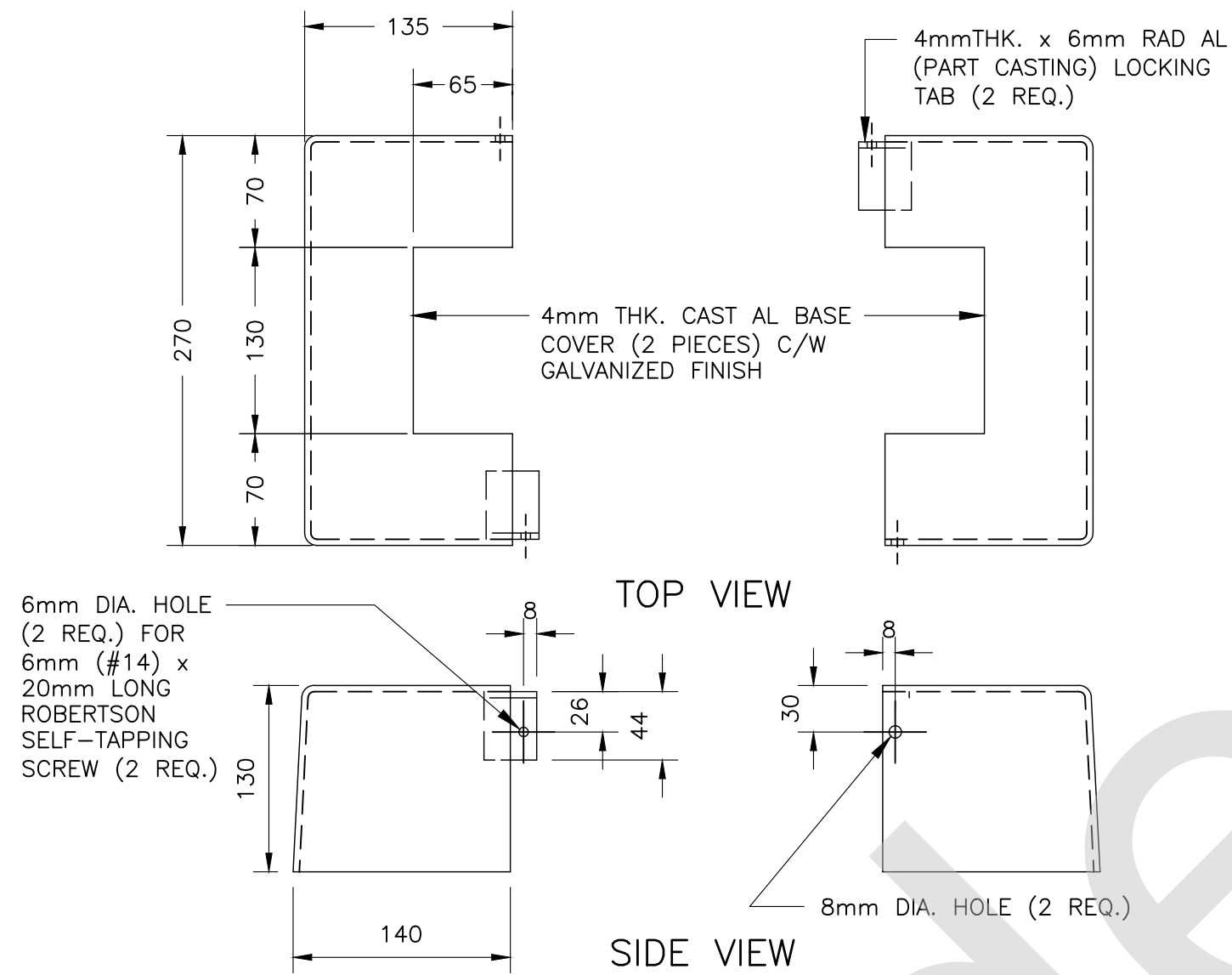
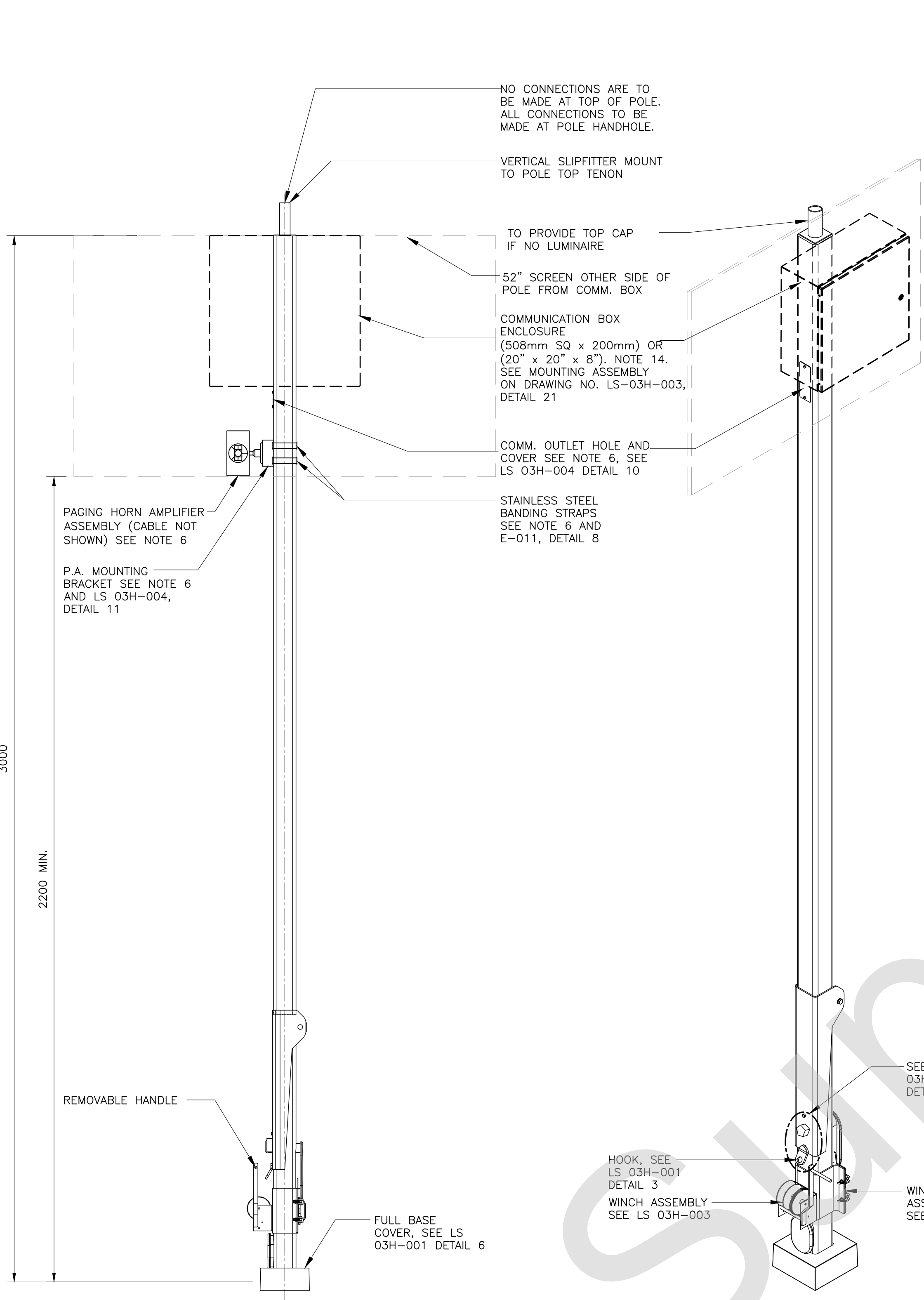
D SIZE 22" x 34" (558.8mm x 863.6mm)

METRIC

ALL DIMENSIONS SHOWN ARE IN METRES AND/OR MILLIMETRES UNLESS OTHERWISE NOTED.

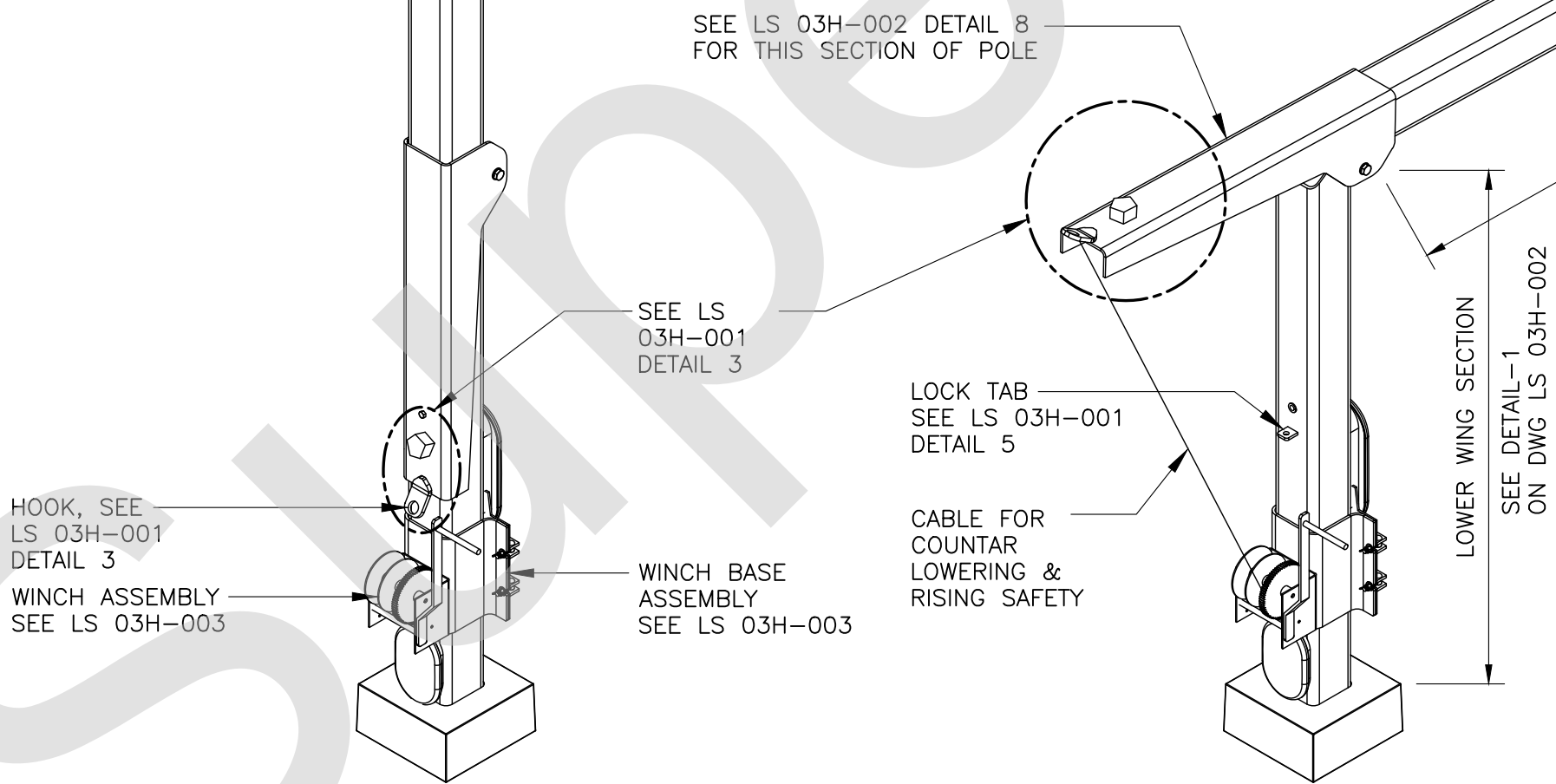
GENERAL NOTES:

1. THIS TYPICAL 3m STRAIGHT SQUARE GALVANIZED STEEL POLE ASSEMBLY IS GENERAL GUIDANCE FOR ELECTRICAL INSTALLATION APPLICABLE TO PLATFORM, BUS LOADING, KISS & RIDE AND WALKWAY AREA LIGHTING. FOR CONCRETE FOUNDATION REQUIREMENT, REFER TO LAYOUT DRAWINGS AND CONCRETE FOUNDATION REINFORCEMENT TABLE ON STANDARD DRAWING LS 03H-004.
2. FOR APPLICABLE LUMINAIRE MOUNTING HEIGHTS SEE NOTE 1 ABOVE.
3. THE HORIZONTAL AND VERTICAL TRACK CLEARANCES FOR ALL PLATFORM LIGHTING POLE INSTALLATIONS SHALL COMPLY WITH THE LATEST CANADIAN NATIONAL AND/OR CANADIAN PACIFIC RAILWAYS STANDARD CLEARANCE DIAGRAM. THE DESIGNER TO DETERMINE EXACT DISTANCE AND MUST OBTAIN WRITTEN APPROVALS BEFORE ANY WORK IS STARTED.
4. SECOND LUMINAIRE IS USUALLY NECESSARY FOR CENTRE PLATFORM LIGHTING OR AS DETERMINED BY SITE CONDITIONS; REFER TO LAYOUT DRAWINGS.
5. LUMINAIRE MATERIAL AND FINISH AS PER SPECIFICATION. COLOR TO BE PLATINUM SILVER. LUMINAIRE MANUFACTURE TO SUPPLY VERTICAL SPLIT FILTER MOUNTS.
6. COMMUNICATION HARDWARE AND WIRING SUPPLIED AND INSTALLED AS SPECIFIED. FOR EXACT LOCATION OF SPEAKER/CAMERA, REFER TO LAYOUT DRAWINGS.
7. GROUNDING RODS TO BE LOCATED AT BASE OF EVERY OTHER POLE OR EVERY 50m (PLATFORM ONLY.)
8. ORIENTATE POLE SUCH THAT POLE SWING PARALLEL TO TRACK.
9. LIGHTING POLE CONSTRUCTION AND COMPONENTS SHALL BE HOT DIP GALVANIZED STEEL C.S.A. G40.21-44 W MINIMUM WITH 50ksi YIELD
10. SEE ELECTRICAL SPECIFICATIONS FOR ALL WELDING, WIND SPEED AND EPA STANDARDS.
11. ALL FASTENERS TO BE STAINLESS STEEL EXCEPT WHERE NOTED OTHERWISE.
12. POLE MANUFACTURER SHALL SUPPLY BOLTS, NUTS AND WASHERS TO TO SUIT DESIGN SPECIFIED IN NOTE 10 ABOVE.
13. SEE DRAWING LS 03H-004 FOR POLE CONCRETE FOUNDATION DETAIL.
14. EQUIPMENT SHALL BE FIELD EVALUATED AND CERTIFIED AS APPROVED FOR USE BEFORE INSTALLATION.
15. NUTS AND BOLTS TO BE STAINLESS STEEL

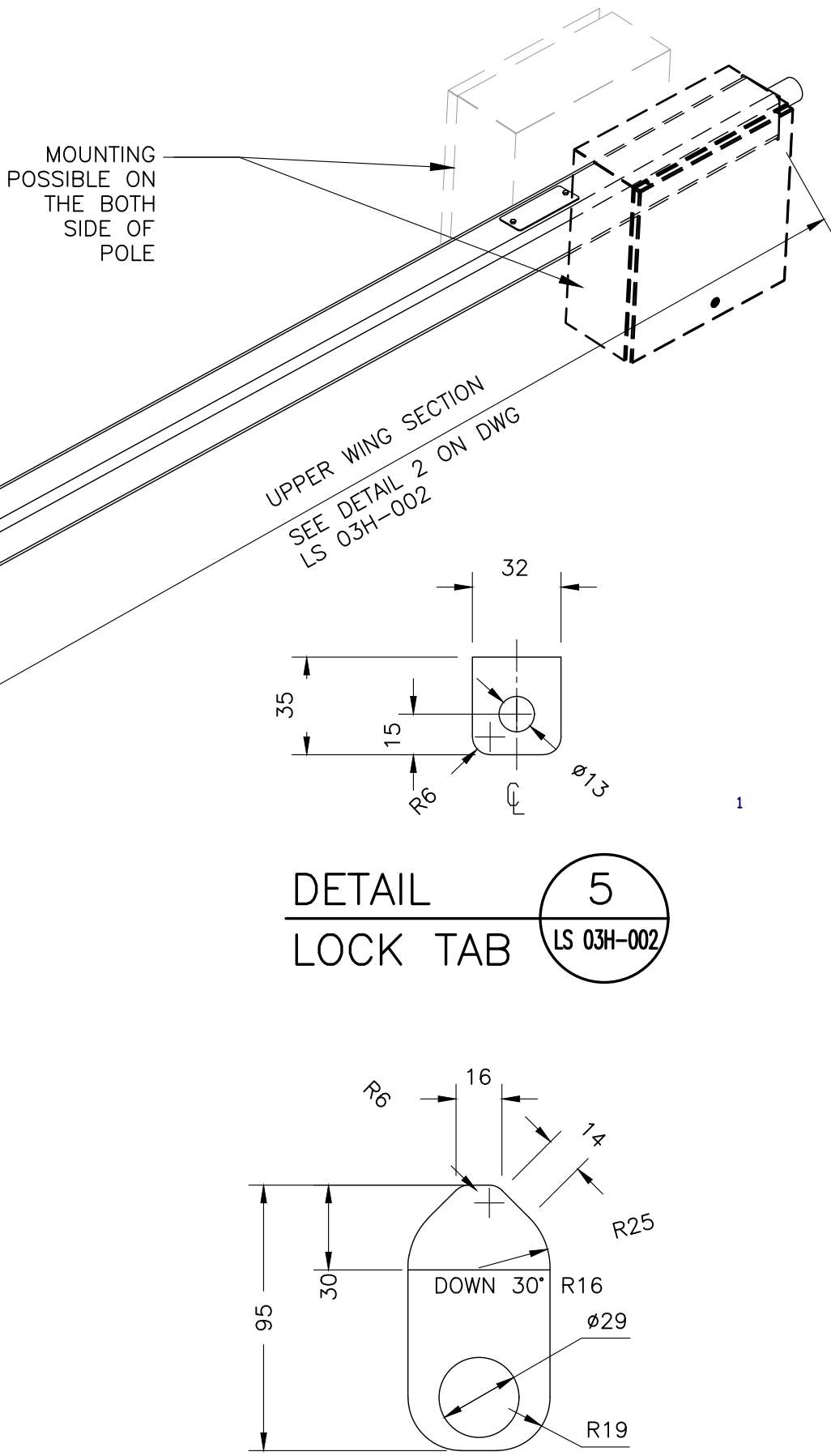


DETAIL 6
FULL BASE COVER

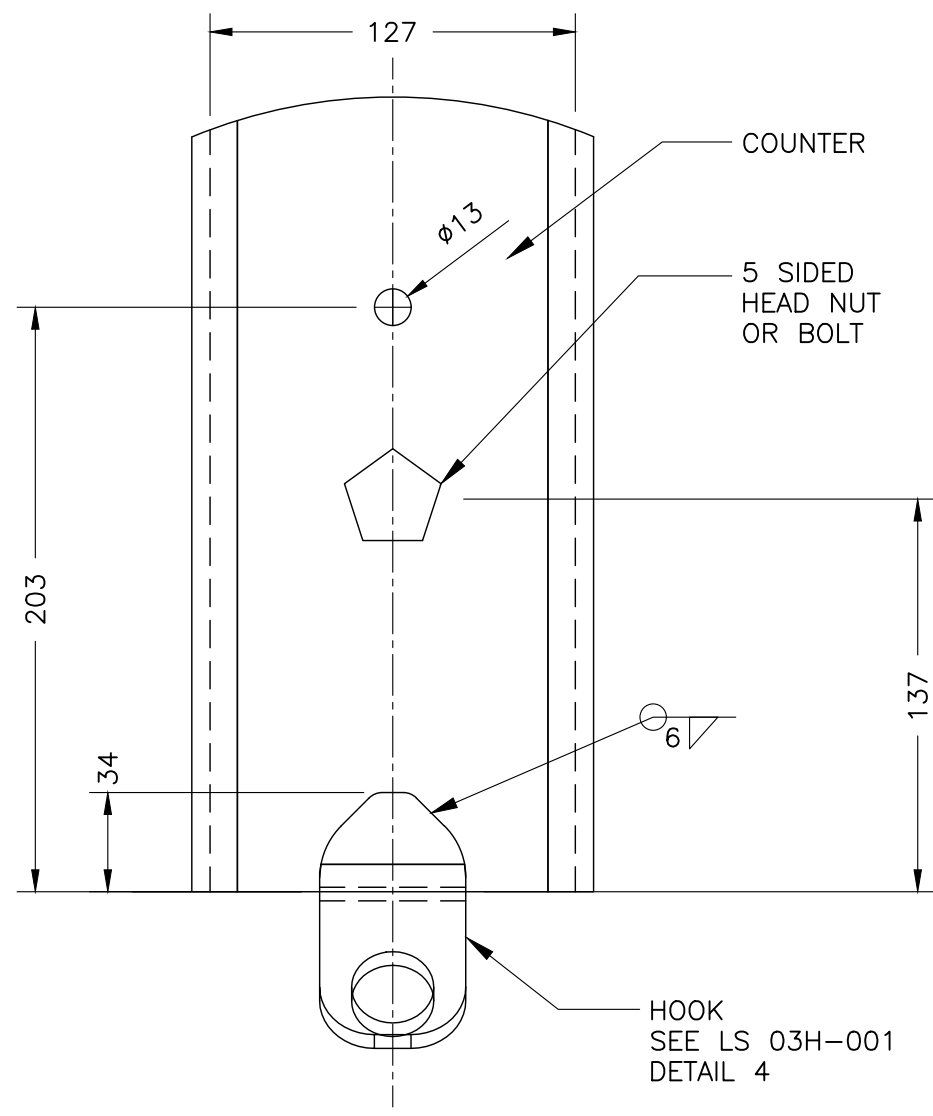
NOTE:
THIS DRAWING IS PROVIDED FOR INSTRUCTIONAL DESIGN PURPOSES ONLY BASED ON METROLINX GO TRANSIT DESIGN GUIDELINES AND REQUIREMENTS. THE CONSULTANT SHALL VERIFY FOR LOCAL CODE COMPLIANCE, EXISTING SITE CONDITIONS AND INTER-DISCIPLINARY DRAWING COORDINATION. ALL DIMENSIONS AND SPECIFICATIONS SHOULD BE VERIFIED BY CONSULTANT AND/OR CONTRACTOR BEFORE ACTUAL CONSTRUCTION BEGINS.



ISOMETRIC VIEW
TYPICAL PLATFORM LIGHTING
POLE ASSEMBLY



DETAIL 5
LOCK TAB



DETAIL 3
HOOK

ELEVATION
TYPICAL PLATFORM LIGHTING
POLE ASSEMBLY

REFERENCE DRAWINGS			ISSUE			REVISIONS			DRAWN BY:	DESIGNED BY:								
									X.X.X.	YY/MM/DD								
									YY/MM/DD	YY/MM/DD								
									YY/MM/DD	YY/MM/DD								
									SCALE: N.T.S	FULL SIZE ONLY								
DWG. NO.	TITLE	NO.	DATE	ISSUED FOR	REV.	DATE												

METROLINX PROJECT NO. XXXXXX		XXXXXXX STATION	
3M LIGHT STANDARD-HINGED POLE		STANDARD DETAILS	
CONTRACT NO.	DWG. NO.	REV.	SHEET
XX-200X-EN-XXX	LS 03H-001	0	