

Ontario Line

# Queen Station Construction Liaison Committee

October 7, 2025



# Agenda

## Welcome (5 min)

- Introductions
- Land acknowledgment
- Session guidelines
- Safety moment

## Presentation (25 min)

- Queen Station construction updates

## Q/A and discussion (30 min)





# LAND ACKNOWLEDGEMENT

Metrolinx acknowledges that we connect communities by building and operating transit within the traditional lands of the Anishinaabe, the Haudenosaunee and the Wendat peoples, for whom these lands continue to have great importance.

Treaties between First Nations and governments cover these lands, and the promises contained in these Treaties remain relevant to this day.

Metrolinx and its employees are committed to understanding the history of these lands and the continued impacts of colonization and take responsibility for actions to advance reconciliation.

Metrolinx will continue to seek the knowledge, expertise and experience of Indigenous partners and commits to doing business in a manner that is built on a foundation of trust, respect, and collaboration.

# Session Guidelines

We greatly appreciate the community members who are here to take part in this public session.

To ensure that everyone can contribute to a positive and safe community experience, all participants shall adhere to the following *Code of Conduct*:

- Treat the presenters and participants with respect and understanding.
- Acknowledge and appreciate the diversity of individuals and their situations.
- Refrain from supporting or engaging in any form of discriminatory behaviour.
- To respect the privacy of CLC members, our employees, and contractors recording the CLC by any means is not permitted, including the use of AI minute-taking software.

**Metrolinx is committed to fostering a safe and respectful environment.  
We encourage respectful and constructive communication.**

## SAFETY MOMENT - BEING A GOOD TRANSIT NEIGHBOUR

**Every day, thousands of people rely on Toronto's transit system. Whether on a streetcar, at a station, or while transferring between stops, it's important to stay aware of potential risks to ensure your safety and the safety of others, as well as helping keep the system safe and comfortable for everyone.**

### **Streetcars & Stations**

- Always look both ways before crossing tracks. Streetcars can be very quiet and approach quickly.
- Mind the gap when boarding or exiting at stations and platforms.

### **General Caution**

- Stay alert when moving through stations and platforms – distractions (phones, headphones) can increase risk.
- If you notice unsafe conditions, report them right away.

### **Being a good neighbor**

- Be aware of your surroundings, especially in less busy areas.
- If you see any sharp object– alert station staff.
- Avoid leaving food exposed while traveling.



**Remember: Staying alert helps protect you and others while using Toronto's transit system.**

# Queen Station Construction Update



# QUEEN STATION EAST SITE EXCAVATION PROGRESS



## CURRENT WORK: QUEEN STATION EAST SITE

- On the east site (Yonge Street to Victoria Street), excavation of soil is ongoing. This phase of work is expected to continue through early 2026.
- Current excavation work, involves digging and removing soil, followed by the progressive installation of wall support structures at each level.
- Additional activities, such as installation of a working platform deck and utility relocation work, are also ongoing.

\*Work is scheduled 24 hours a day, Monday to Saturday.



*Excavation is underway inside the acoustic shelter at the Queen Station east site*

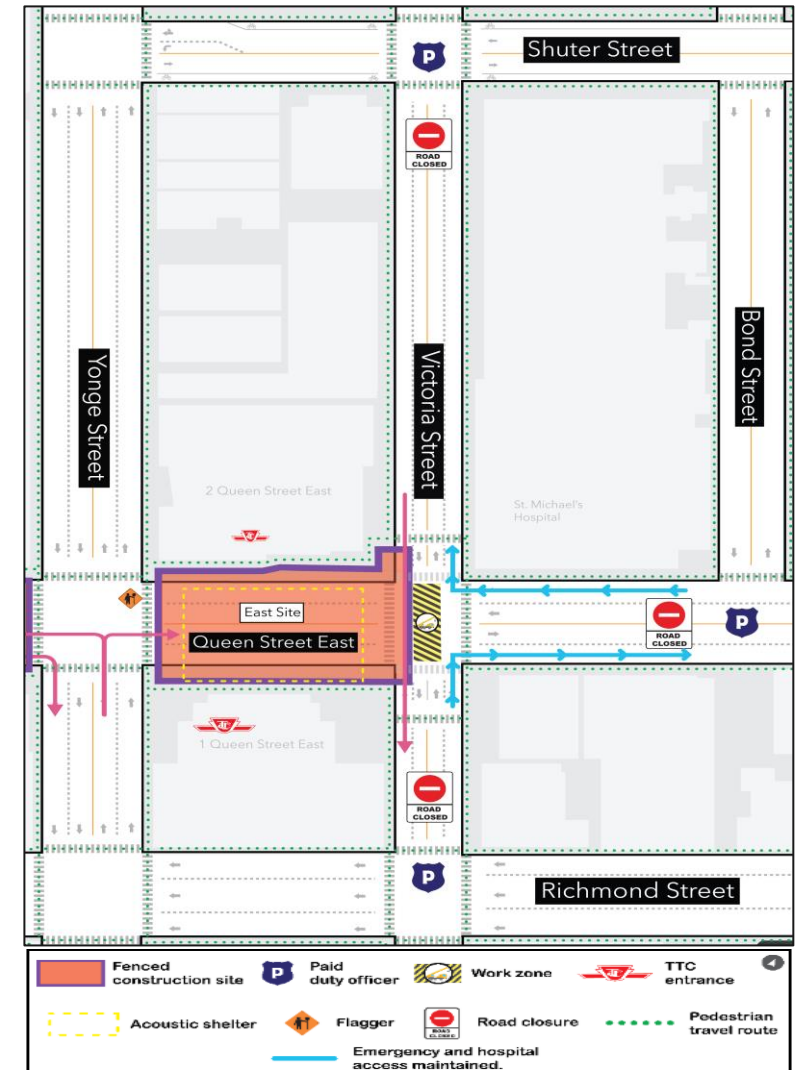
## TRAFFIC CLOSURE AT QUEEN EAST SITE

Crews have completed the acoustic shelter installation and will next install ventilation covers and generators.

To complete this work safely, full lane closures will take place overnight on Queen Street East and Victoria Street intersection, as shown on the map. Access to St. Michael's Hospital and local traffic will be maintained.

Lane closures are from **9 p.m. to 6 a.m. periodically from early October to the end of October 2025.**

Link on the Notice: [Here](#)



## SEWER DISCHARGE QUEEN EAST SITE

As part of the construction of the Ontario Line and the future station site at the Queen, crews will be connecting below-ground sewer infrastructure.

To complete this work, crews must excavate the crosswalk and sidewalk at the northeast corner of Queen Street East and Yonge Street to install pipes underground.

**Work is scheduled to occur over two days, from Oct. 2, 2025, to Oct. 10, 2025.**

The sidewalk on the north side of Queen Street East and the crosswalk on the east side of Yonge Street will be closed during construction and will be restored when complete. Please see the closure map to the right.

**Link of the Notice : [here](#)**





AERIAL VIEW OF THE QUEEN STATION WEST SITE

## CURRENT WORK: QUEEN STATION WEST SITE

- On the west site (Yonge Street to Bay Street), excavation work is ongoing. This phase of work is expected to continue through early 2026.
- The excavation level is currently at seven (7) meters deep.
- Additional activities, such as installation of a platform deck, crane commissioning, and utility relocation work, are ongoing.

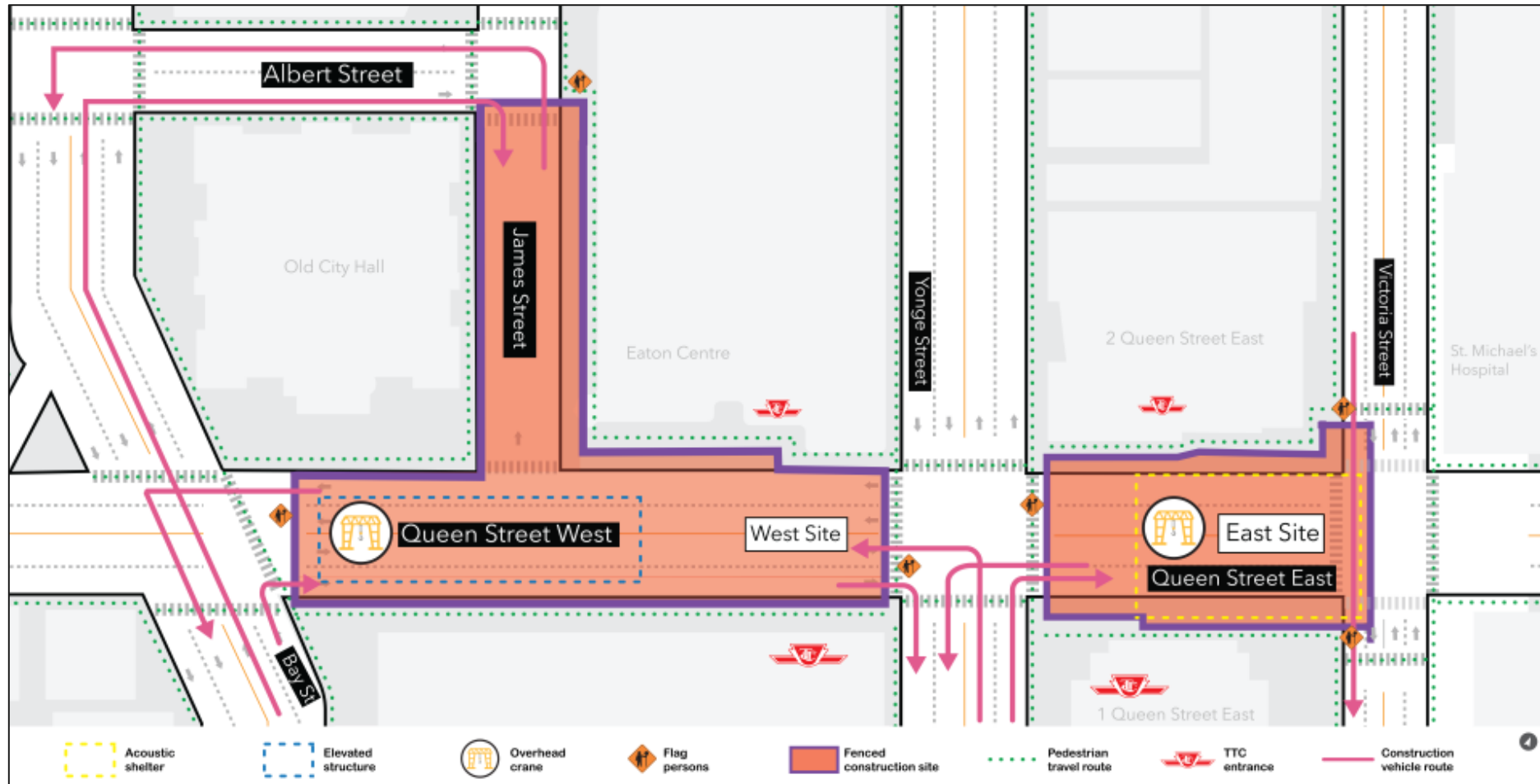
\*Work is scheduled 24 hours a day, Monday to Saturday.



*Deck installation at the Queen west site*

## UPDATE: SITE ACCESS

- With the completion of some recent work, crews have reopened pedestrian pathways around the site.



# Upcoming work

# EIGHT WEEK LOOK-AHEAD - QUEEN: October - November 2025

#	Activity	Expected Start	Location	Expected Duration	Impact	Hours of Work	Mitigations
1	Excavation, (soft soil), support work	Ongoing	East site	Entire look-ahead period	Vibration, noise, air quality	24 hours a day, Monday to Friday, some Saturdays	Hoarding as noise mitigation. Dust mitigation includes misting, sweeping. Erosion and sediment control.
2	Excavation (soft soil), support work	Ongoing	West site	Entire look-ahead period	Vibration, noise, air quality	24 hours a day, Monday to Friday, some Saturdays	Hoarding as noise mitigation. Dust mitigation includes misting, sweeping. Erosion and sediment control.
3	Watermain work	As early as mid-October	East and West	Entire look-ahead period	Vibration, noise, traffic impact	24 hours a day, seven days a week	Hoarding as noise mitigation. Dust mitigation includes misting, sweeping. Erosion and sediment control. Traffic control

\*Note: All dates and times are subject to change as construction planning progresses.

# Community engagement

# Community Open House

Nov. 4, 2025  
5:30 p.m. to 7 p.m.

**Sheraton Hotel Simcoe meeting room**

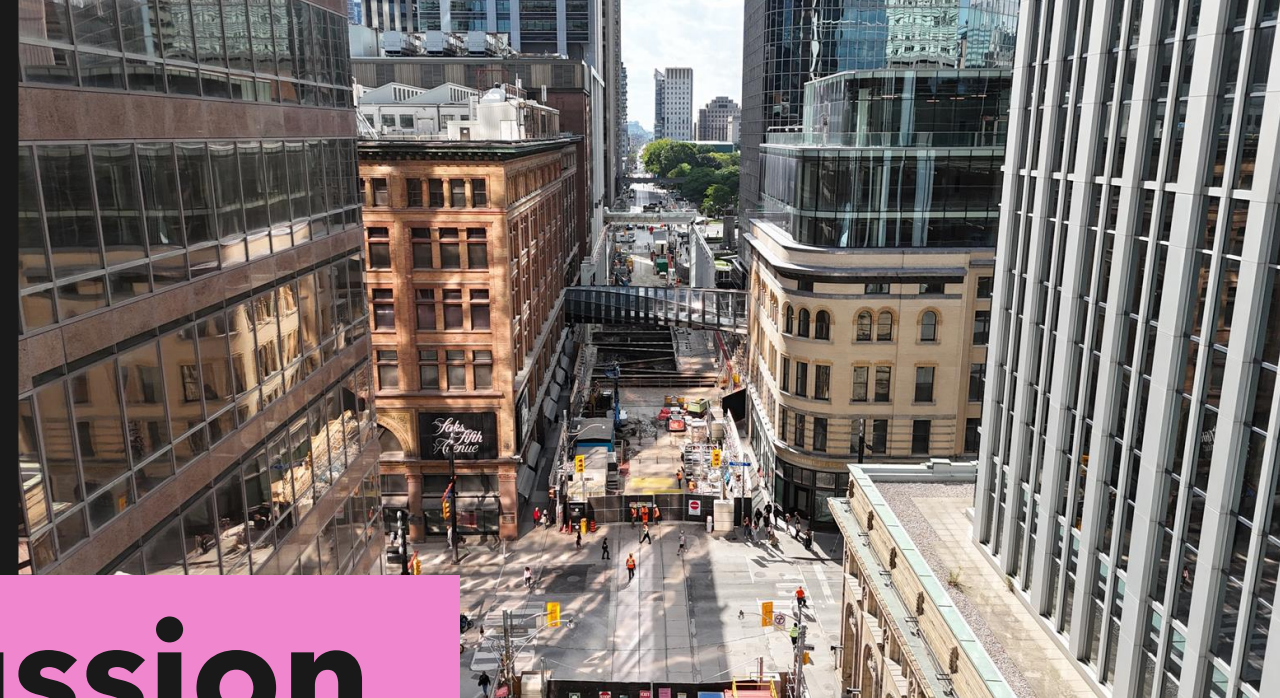
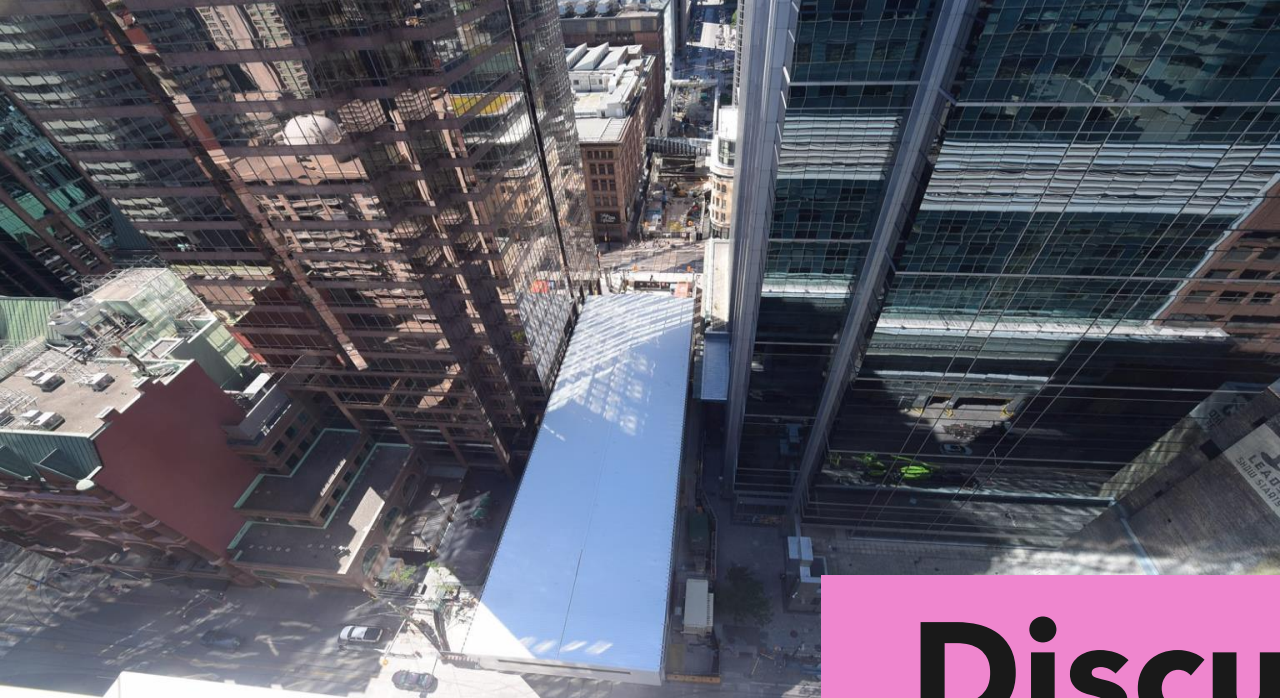
**Annex - 2nd Floor**

**123 Queen Street West**

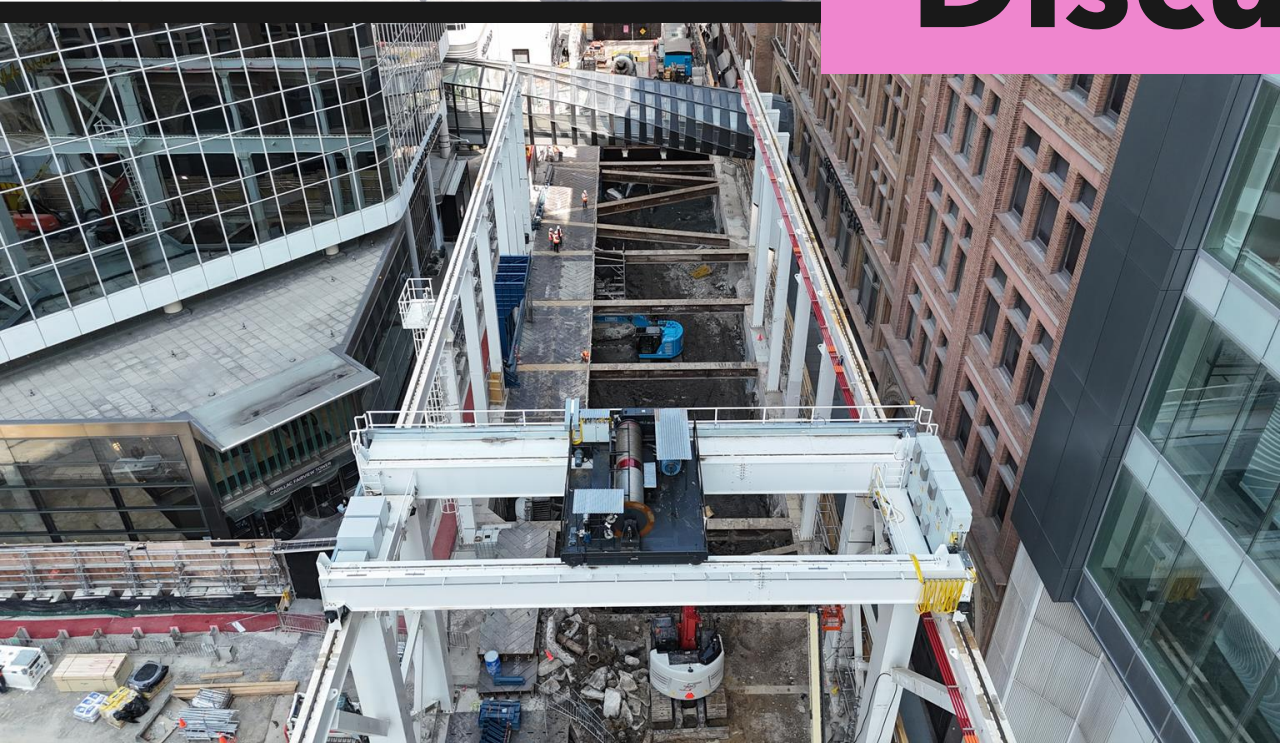
**Please register to join us!**



# Discussion



# Discussion



## KEEPING YOU INFORMED

**Metrolinx will keep the community, residents, and businesses informed by providing project updates, seeking input and feedback, while addressing questions and concerns effectively and quickly.**

**Next CLC meeting: *Tuesday, Dec. 9, 2025***

**Connect with us:**

- Julia Orsini, Community Engagement Advisor
- Ross Andersen, Senior Advisor, Community Engagement

Email: [OntarioLine@metrolinx.com](mailto:OntarioLine@metrolinx.com)

Telephone 24/7 @ 416-202-5100

**Follow us on social media:**

Twitter / Facebook / Instagram: @OntarioLine



*Scan here to sign up  
for the Ontario Line  
e-newsletter*



*Scan here to explore  
Ontario Line CLC  
documents*

