

Union Station Rail Corridor East GO Corridor Expansion: Early Works

Construction Liaison Committee Meeting

James Burchell, Advisor Community Engagement
and Issues Management

More info: metrolinx.com/unionstation/
Contact: TorontoEast@Metrolinx.com

October 28, 2025

LAND ACKNOWLEDGEMENT

Metrolinx acknowledges that we connect communities by building and operating transit within the traditional lands of the Anishinaabe, the Haudenosaunee and the Wendat peoples, for whom these lands continue to have great importance.

Treaties between First Nations and governments cover these lands, and the promises contained in these Treaties remain relevant to this day.

Metrolinx and its employees are committed to understanding the history of these lands and the continued impacts of colonization and take responsibility for actions to advance reconciliation.

Metrolinx will continue to seek the knowledge, expertise and experience of Indigenous partners and commits to doing business in a manner that is built on a foundation of trust, respect, and collaboration.



Safety Moment | Hiking Safety

7 in 10

Canadians participate in wilderness activities

2.4 mill.

Canadians visit the ER due to sports/recreation injuries each year

24

different types of hiking trails exist across the world

Why is it important?

Proactively applying safety practices while hiking helps to avoid injuries and aids a successful experience.

Even healthy morning walks can lead to accidents, dehydration, getting lost, etc. so awareness is key.

Planning and preparing for your hike is essential to staying safe.

What can you do?

1. Bring sunscreen, a hat and sunglasses for sun protection.
2. Plan your route, inform someone of your itinerary and expected return.
3. Avoid getting lost by sticking to established paths.
4. Check weather forecasts and be ready to adjust or postpone if conditions worsen.
5. Wear high-quality, well-fitting footwear with good traction, and replace worn gear.
6. Dress appropriately for the weather.

Terms of Reference

PURPOSE:

The CLC will provide a communication forum for the Union Station Rail Corridor East (USRCE) construction project teams and community representatives of area residents and businesses to proactively and regularly communicate and discuss construction activities and community impacts. The committee is designed to enable regular access to construction-related information, including schedule and timing information for local business owners, community groups and residents, through CLC representatives and discussions.

MANDATE:

- The CLC is a communication forum to provide open, two-way communication and dissemination of information related to the USRCE area construction, including:
- Site preparation works and construction activities.
- Short- and long-term impacts of works and activities.
- Steps being taken to address impacts of works and activities.

Terms of Reference - continued

The CLC will be a forum for two-way communication and dissemination of information related to USRCE area construction activities that impact the community. The CLC is not responsible for making decisions regarding the project. This is the responsibility of the project team.

The USRCE Team will:

- Provide accurate, understandable and timely information.
- Be open to feedback, give careful consideration to ideas, and report back to the larger project team.
- Adhere to all aspects of the Terms of Reference and Code of Conduct.

Community Representatives or Area Residents and Businesses will:

- Participate actively in regular meetings.
- Be open and receptive to ideas.
- Liaise and act as a representative of pre-identified organization/community/business or stakeholder group by providing feedback to the project team and formally communicating relevant information back to their respective groups.
- Adhere to all aspects of the Terms of Reference and Code of Conduct.

Code of Conduct

Code of Conduct is an important element in everything we do and participate in.

The following items should be followed by all who attend the CLC meetings, as members and staff:

- Keep requested agenda and discussion items within the scope of the working group.
- Participate in a respectful manner.
- Continued engagement throughout all working group meetings to ensure the final product is the result of collaborative discussion.
- Do not interrupt when someone is speaking. Do not dominate discussions. Refrain from foul language and derogatory comments.

Introductions

Community Groups at the CLC table:

- Goodman Worts/Distillery District
- Corktown Common Community
- Market Wharf Condo Community
- Caroline Co-op Residents
- Cathedral Court Co-op Residents
- Longboat Area Residents Association
- West Don Lands Community
- Toronto Community Housing
- MPP Chris Glover, Spadina-Ft. York
- Councillor Chris Moise, Toronto Centre, Ward 13
- Councillor Ausma Malik, Spadina-Ft. York, Ward 10
- City of Toronto – Transit Expansion Office
- St. Lawrence Neighbourhood Association
- Old Town Toronto BIA
- Monde Condo Community
- Sugar Wharf Condo Community
- Residences at World Trade Centre
- Lighthouse Residences Condo Community
- East Waterfront Community Association

Metrolinx Project staff present:

- Toronto East Community Engagement Team
- Metrolinx Environmental Programs and Assessments
- GO Expansion Enabling Works – USEP/USRCE

Metrolinx Partners with us today:

- OnTrack Alliance - GO Expansion Enabling Works

AGENDA

USRC-E CLC Meeting - October 28, 2025

Time 7:00 – 8:00pm

TOPICS

- 1 Welcome
- 2 Land Acknowledgement
- 3 Safety Moment
- 4 Introductions and Housekeeping
- 5 GO Expansion/ Union Station Updates - Overview
- 6 USEP/URCE GO Expansion (OnTrack Alliance)
- 7 OnTrack Alliance: Soil Management and Post Rain Check
- 8 Ontario Line Early Works
- 9 Questions & Discussions
- 10 Next Steps and Final Comments

Housekeeping

We appreciate everyone's interest and engagement and welcome dialogue. We ask that you **hold your questions until the end of this presentation** where there will be ample time to table them. Should a question arise this evening and we are unable to respond in real time, we will make record of the question and take effort to get back to the member as soon as we are able.

For note taking purposes and minute scribing of comments and questions, **this meeting will be recorded**. Should there be concerns regarding this you are free to go off camera and submit your questions via email at torontoeast@metrolinx.com if they are not tabled by another member this evening.

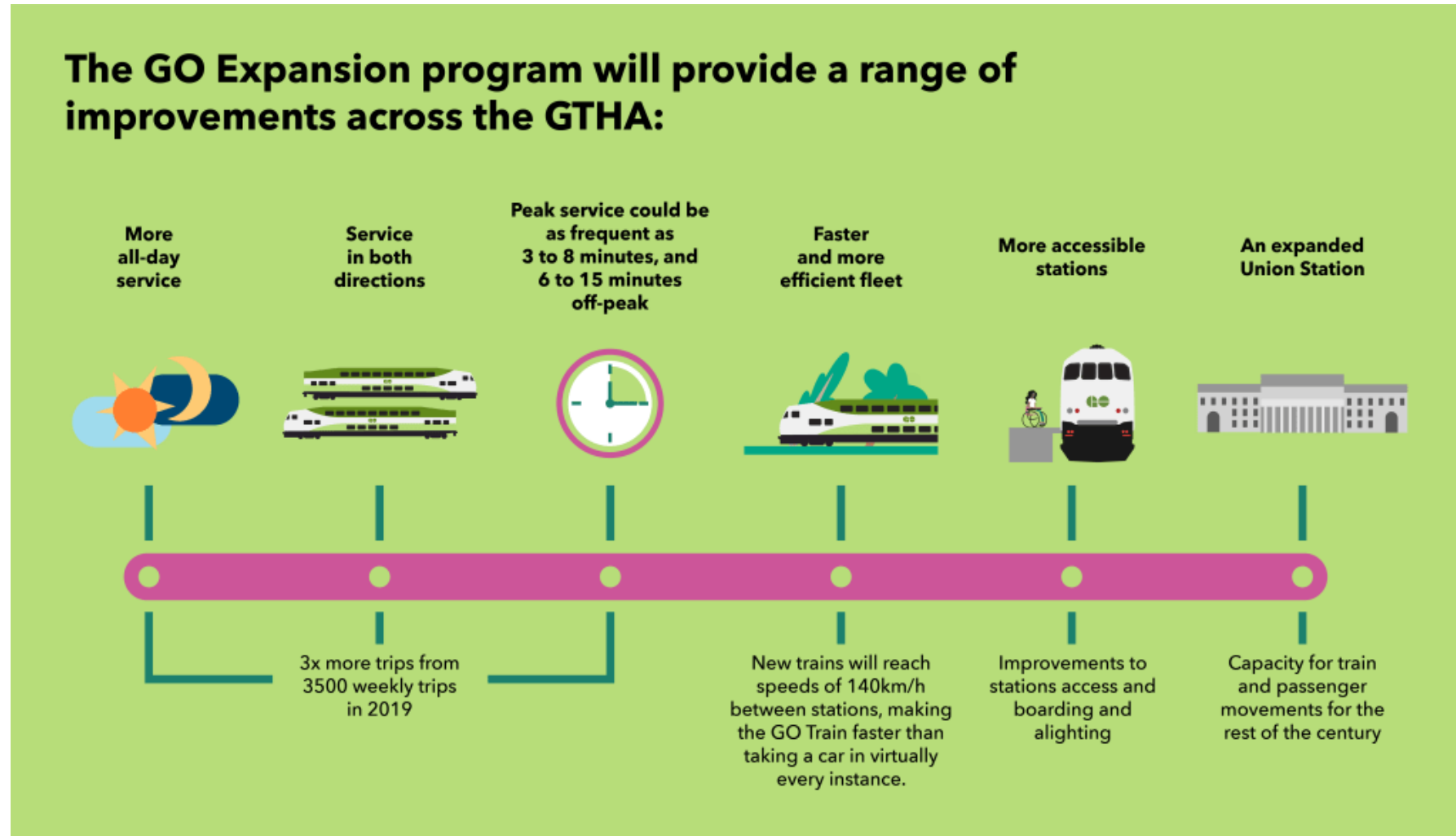
The Recording will begin now.

GO Expansion

Overview – James Burchell, Community Engagement

October 2025

GO Expansion - In a Nutshell



What is GO Expansion?

The GO Expansion program will bring faster, more frequent train service by delivering new transit infrastructure and operational plans that will reduce journey times, add capacity and further improve on-time performance and customer satisfaction.

Why is expanding GO service needed?

With the GO Transit service area - which includes the Greater Toronto, Hamilton Region (GTHA), Kitchener-Waterloo, Barrie and Niagara - expected to grow to 15 million people by 2051, expanding GO service is necessary to help alleviate congestion and offer customers an option that will be more desirable than driving.

What is the goal of GO Expansion?

The goal is to create a network with the capacity to deliver service every 15 minutes or better, all-day, in both directions on core routes like the Lakeshore East (to Oshawa GO), Lakeshore West (to Burlington GO), Kitchener (to Bramalea GO), Stouffville (to Unionville GO) and Barrie (to Aurora GO) lines.











How do improvements at Union Station and along the rail corridor support this goal?

Union Station and the adjacent rail corridor are known collectively as the Union Station Rail Corridor (USRC).





There are multiple projects underway at Union Station, all working towards the same goal - preparing the Union Station Rail Corridor for GO Expansion service levels.

GO Expansion

Regional GO Rail Network

-  In Delivery GO Rail Station
-  Lakeshore West
-  Milton
-  Kitchener
-  Barrie
-  Richmond Hill
-  Stouffville
-  Lakeshore East
-  UP Express
-  Corridor Improvements & Electrification

Context Layers

-  Urban Growth
-  Built-Up Area in Greenbelt
-  Built-Up Area
-  Greenbelt Area

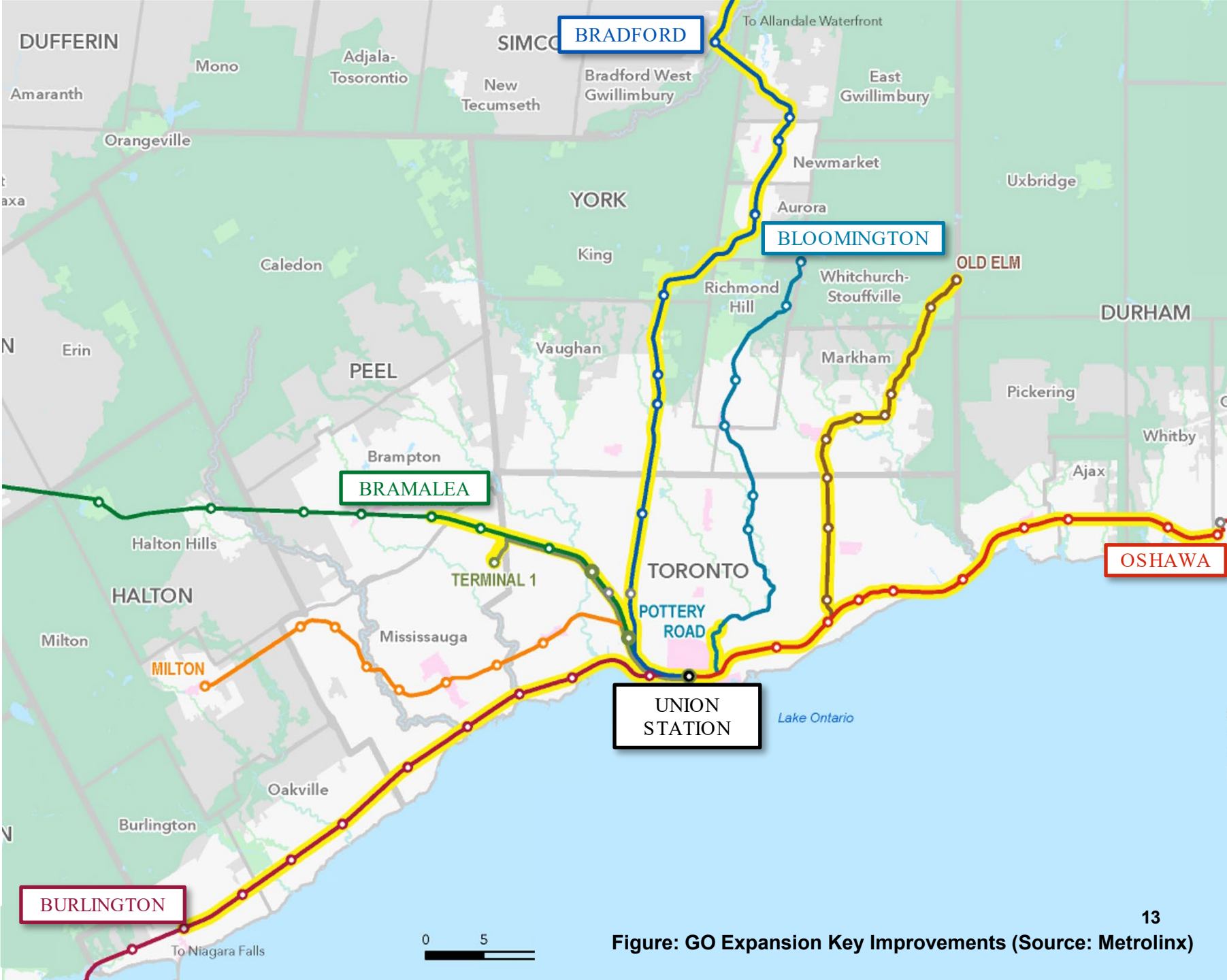


Figure: GO Expansion Key Improvements (Source: Metrolinx)

UNION STATION



FRONT ST

UP
Union
Pearson
Express
AIRPORT
TRAIN



WEST WING

GREAT HALL

EAST WING



**YORK
CONCOURSE**



**VIA
CONCOURSE**



**BAY
CONCOURSE**

YORK ST

BAY ST

UNION STATION ENHANCEMENT PROJECT
NEW SOUTH CONCOURSE

25 YORK

MAPLE LEAF
SQUARE

**Scotiabank
Arena**

BUS
TERMINAL

Go Expansion

Work at Union Station

Work at Union Station includes the construction of transit infrastructure and upgrades at the southernmost part of Union Station.

We're widening platforms, adding more stairs and elevators, and building a new concourse between Bay and York streets.

Work completed to date



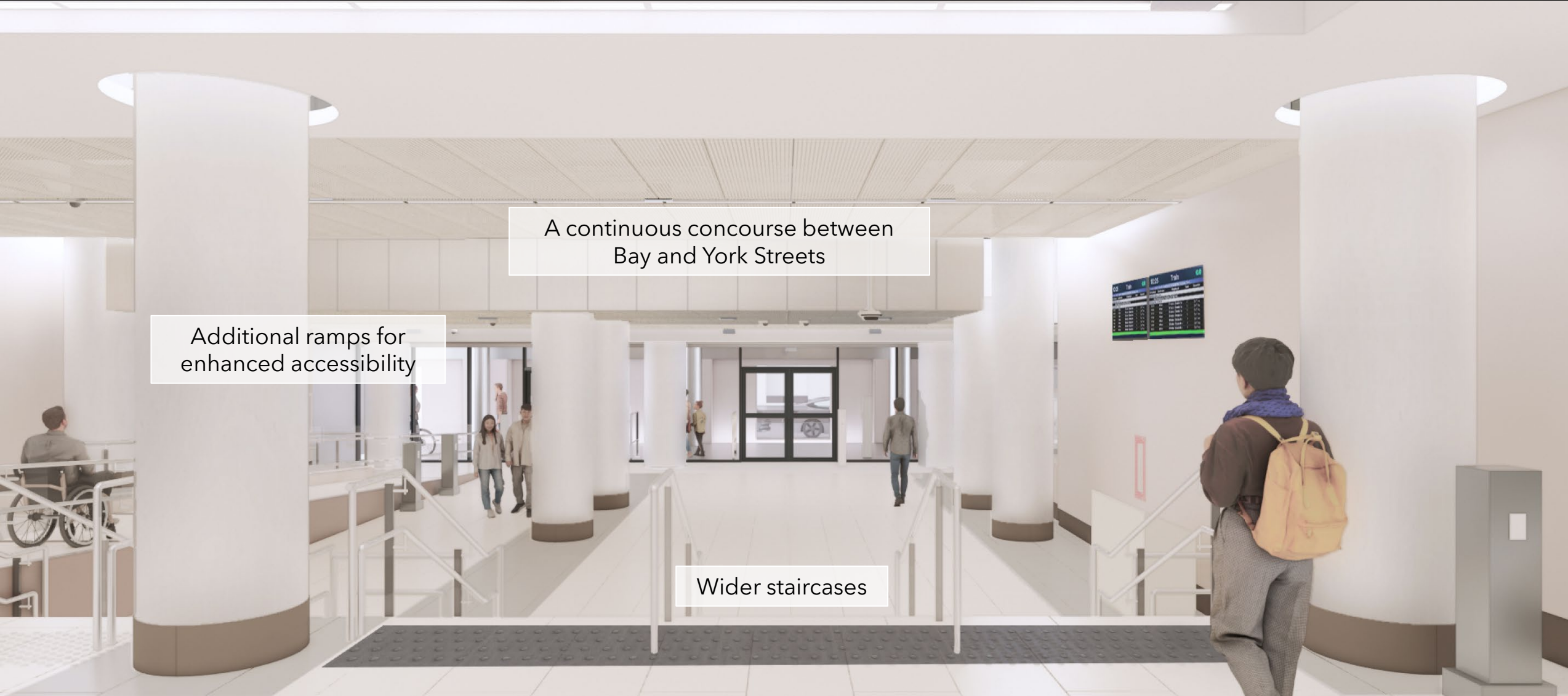
Track slab demolition and site excavation



Multiple concrete pours to enable wider platforms and additional rail tracks.



Started the mechanical and electrical fit-out of the newly constructed concourse



CONCEPTUAL RENDERINGS

Artist's rendering subject to change. (Metrolinx image)



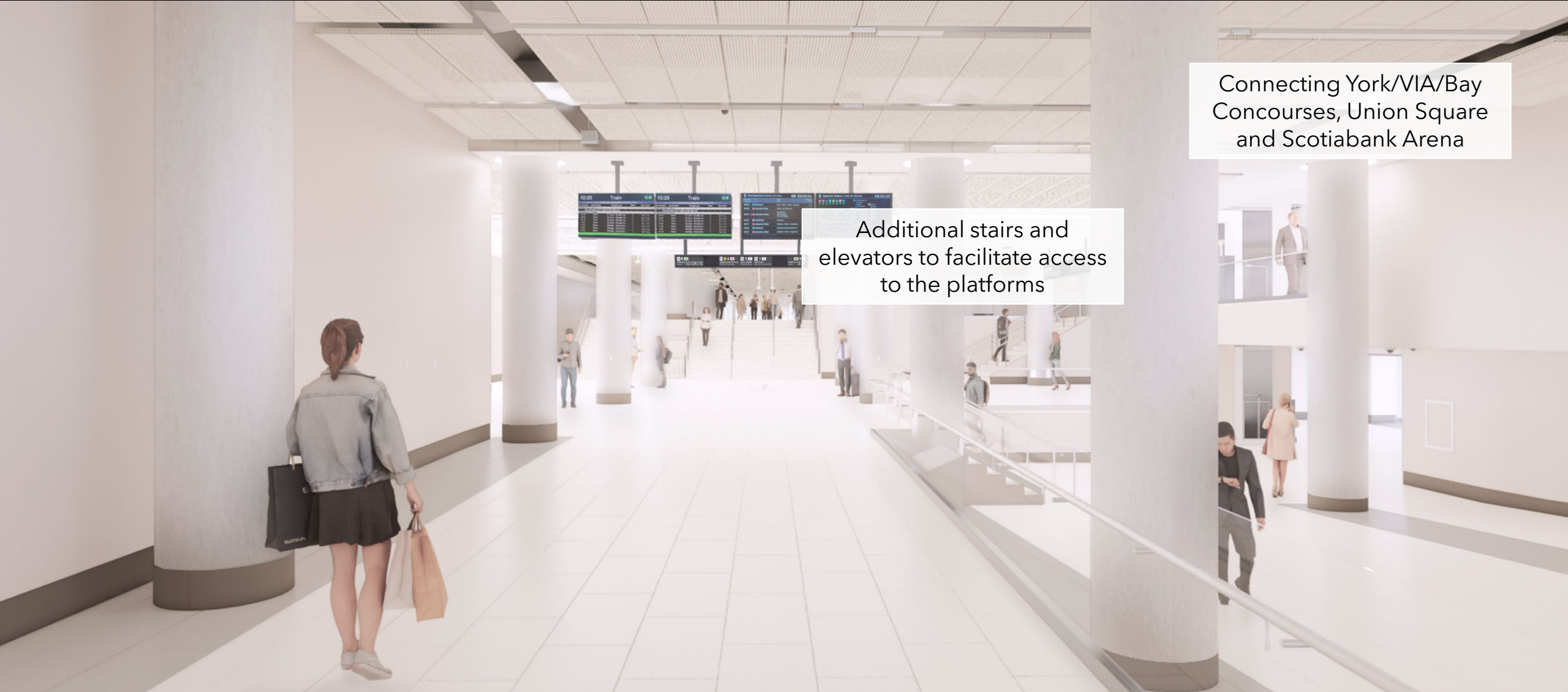
Facilitating new
south tracks

Wider
platforms

Additional stairs and
elevators to facilitate access
to the platforms

CONCEPTUAL RENDERINGS

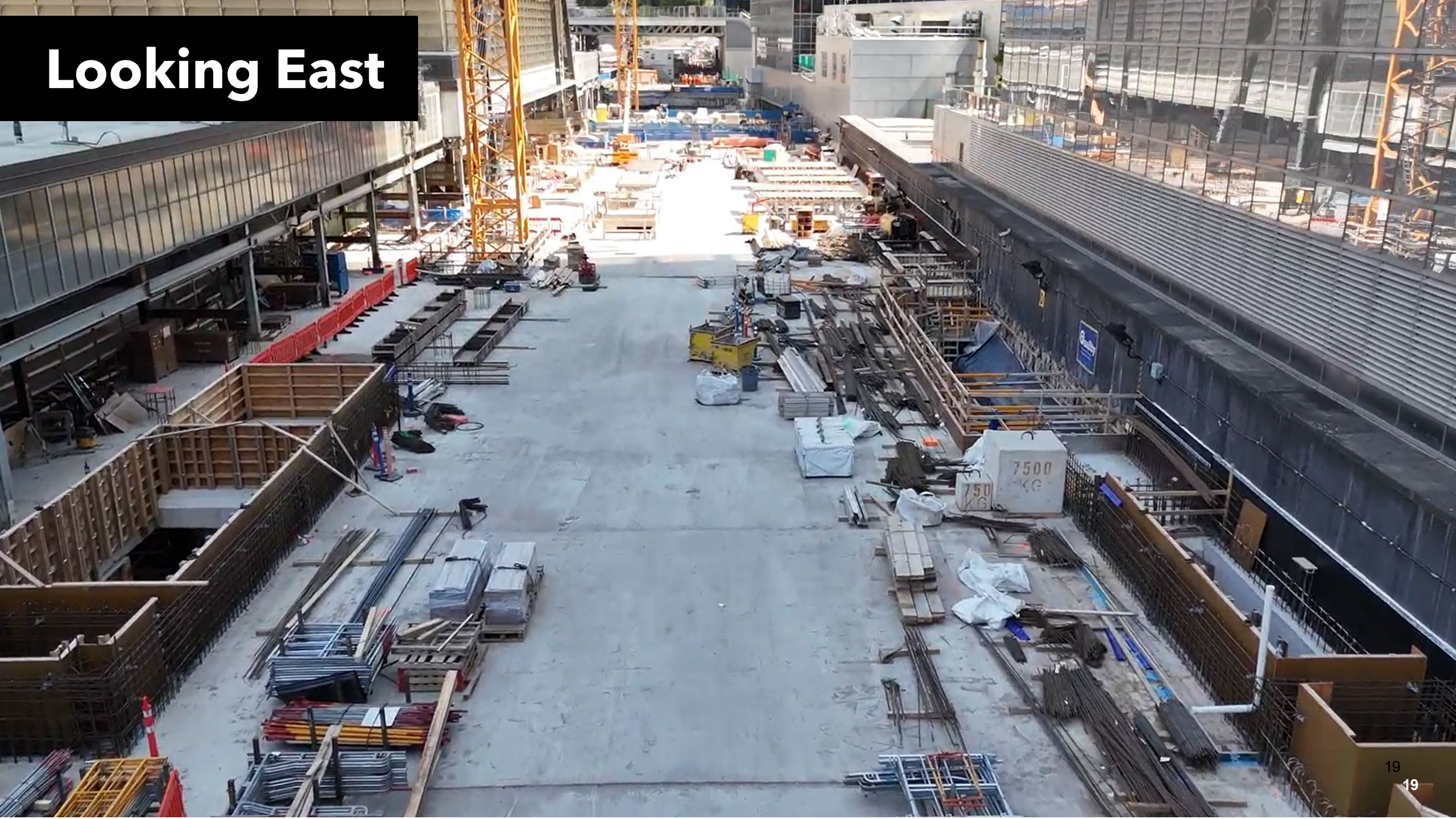
Artist's rendering subject to change. (Metrolinx image)



Connecting York/VIA/Bay
Concourses, Union Square
and Scotiabank Arena

Additional stairs and
elevators to facilitate access
to the platforms

Looking East



Looking West



Zone 1 (Concourse) Fit Out



USEP/USRCE – GO Expansion OnTrack Alliance (OTA)

Overview

Jacob Kachuba, Project Manager, USEP

USEP – Union Station Rail Corridor East (USRCE)

The East Track Enhancements (ETE) within the Union Station Rail Corridor (USRC) are being completed as part of the Union Station Enhancement Project (USEP)

- USRCE works are underway within the rail corridor between Union Station and the Don Yard Maintenance Facility, located adjacent to the Don River.
- Work outside of the rail corridor is now mostly limited to areas at Lower Jarvis Street and Lower Sherbourne Street.

The project scope includes:

Complete

- Relocation of Signalling Infrastructure and Utilities
- Hydro Utility Bridge Installations
- Hydro Utility Duct Bank Installation & Commissioning
- Existing Hydro Utility Tower and Cable Removal
- Jarvis and Sherbourne Secant Wall Installation, Wingwall Demolition and Bridge Fascia Demolition
- Caisson Drilling
- Abutment Installations

Underway

- Preparation for new rail bridges over Lower Jarvis Street and Lower Sherbourne Street:
 - Secant wall demolition
 - Bridge lift preparation works

Upcoming

- Installation of Rail Bridges over Lower Jarvis Street and Lower Sherbourne Street

An aerial photograph of the Union Station Rail Corridor in Chicago. The image shows a wide, multi-lane highway running parallel to a set of railroad tracks. In the background, the Chicago skyline is visible, including the CN Tower. The sky is overcast with grey clouds. The foreground shows some construction activity and parking lots.

Union Station

Relocating and enhancing Infrastructure along the Union Station Rail Corridor (USRC)

Upgrades to infrastructure are needed to help clear the way for increased capacity within the rail corridor and bring more frequent service.

Go Expansion

East Track Enhancements: Lower Jarvis and Lower Sherbourne streets

We are removing and relocating infrastructure on the south side of the Union Station Rail Corridor, east of Union Station.

We have been reinforcing the corridor to support the widening of the rail bridges that pass over Lower Jarvis and Lower Sherbourne streets to allow for two additional sections of track to be installed.

Work completed to date



Installed secant wall



Demolished old wingwall and
bridge fascia



Installed new caissons
foundation



Poured concrete for new
abutments at both bridge
locations

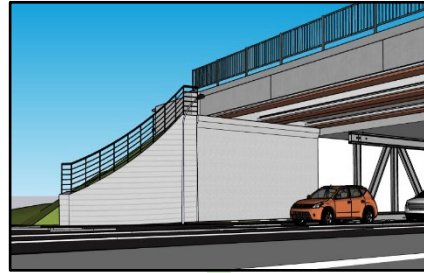
East Track Enhancements: Lower Jarvis and Lower Sherbourne streets



Secant Wall Installations
Complete



Bridge Fascia Demolitions
Complete

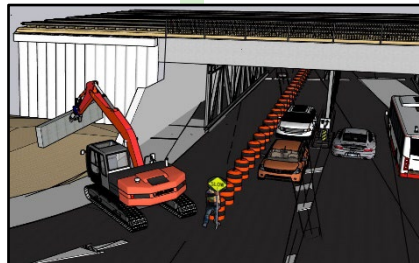


Bridge Fascia Refacing
Complete

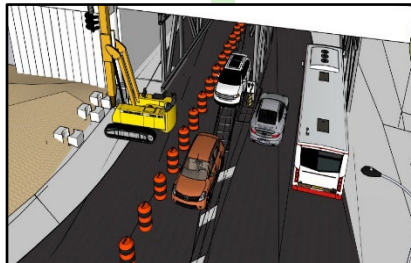


Bridge Lift
Complete November 20, 2025.
Minimal Noise

Wingwall Demolitions
Complete



Caisson Drilling and Foundation Installations
Complete



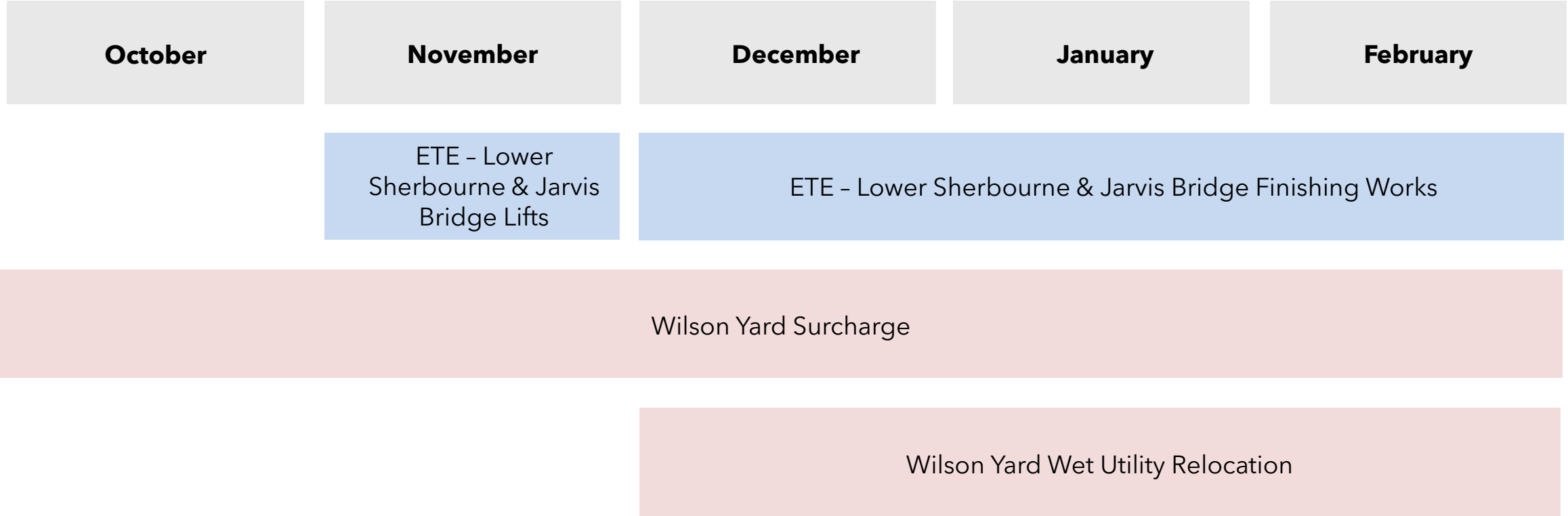
Abutment Installations
Complete



Incidental Works
Complete in April 2026.
Minimal Noise



USRCE Project Schedule



*Timelines are subject to change and the schedule will be updated regularly.

Activities - ETE Lower Jarvis Street

Location	Activity	Date
Lower Jarvis	Secant Wall Installations	Complete
	Wingwall Demolition	Complete
	Bridge Fascia Demolition	Complete
	Caisson Drilling and Foundation Installations	Complete
	Abutment Installations	Complete
Lower Jarvis	Bridge Lift	November 14 - November 15, 2025 & November 17 - November 18, 2025
	Bridge Finishing Works	November 16 - Spring 2026

*Timelines are subject to change and the schedule will be updated regularly.

Activities - ETE Lower Sherbourne Street

Location	Activity	Date
Lower Sherbourne	Secant Wall Installations	Complete
	Wingwall Demolition	Complete
	Bridge Fascia Demolition	Complete
	Caisson Drilling and Foundation Installations	Complete
	Abutment Installations	Complete
Lower Sherbourne	Bridge Structure Work	Ongoing - November 15, 2025
	Bridge Lift	November 15- November 16, 2025 & November 18 - November 20, 2025
	Bridge Finishing Works	November 20 - Spring 2026

*Timelines are subject to change and the schedule will be updated regularly.

ETE - Lower Sherbourne, October 2025



Activities - ETE

Bridge Lifts

The new bridge deck will be lifted into place from roadside to expand the corridor from a 6-track bridge to an 8-track bridge.

Impacts: Full weekend road closure including traffic lanes, cycle tracks, and sidewalks.

Lower Jarvis: [November 14 - November 15, & November 17- November 18 2025](#)

- Full weekend road closure

Lower Sherbourne: [November 15 - November 16, & November 18 - November 20, 2025](#)

- Full weekend road closure

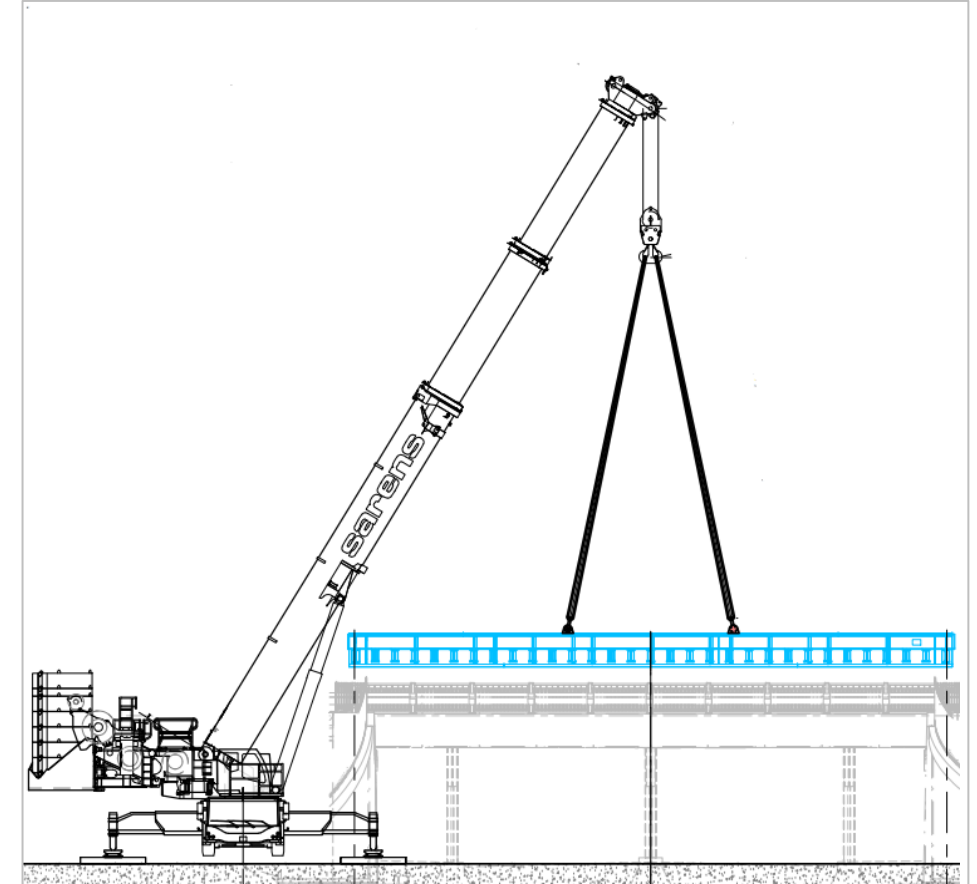


Photo: Bridge Lift Drawing (for illustrative purposes only)

*Timelines are subject to change and the schedule will be updated regularly.

ETE - Bridge Laydown Area



ETE - Bridge Laydown Area



Wilson Yard

The Don and Wilson Yards are being combined into a single active rail yard to support future GO Expansion service levels.

Enabling works at Wilson Yard are underway and include grading and drainage work, retaining wall installation, access road construction and utility relocations.

Work completed to date



Commenced with surcharging to prepare the area for the construction of an active rail yard.

Did you know...

- Most of the crushed material for infill came from recycled concrete rubble from the nearby construction sites. This approach diverts and repurposes waste that may otherwise go to landfills.
- After months of sorting to remove metal using a giant magnet, the concrete was crushed to the right size for reuse.

Activities - Wilson Yard

Retaining Wall Installation - Complete

- Retaining wall installation on west side of site is nearing completion. It is being constructed in anticipation of the surcharge in Wilson Yard.

Ground Levelling (surcharge) - Ongoing

- Ground area to be raised to the elevation of Don Yard located to the North of Wilson Yard. This will allow for the future installation of additional storage tracks as part of the greater GO Expansion Program this winter.

Access Road Construction - Upcoming

- Existing access driveway to be regraded to suit surcharge in Wilson Yard.

Wet Utility Relocation - Upcoming

- Existing storm and sanitary to be relocated to allow for the future installation of additional storage tracks.



Photo: Wilson Yard Surcharge Zones

Activities - Wilson Yard



July, 2024



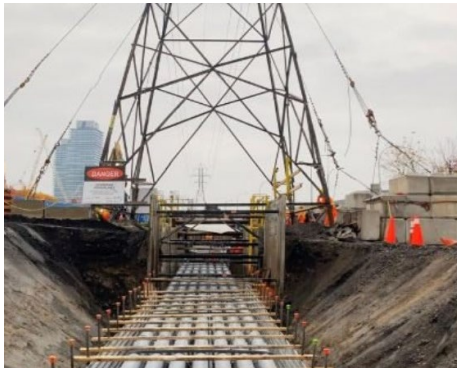
September, 2025

Go Expansion

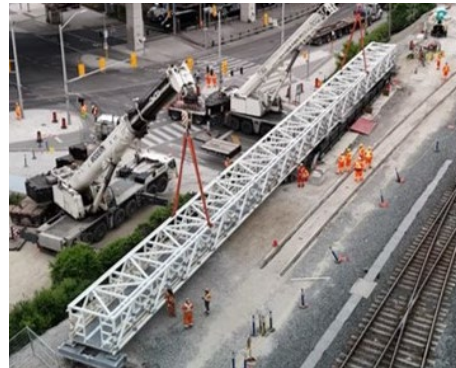
Hydro utility upgrades

We are removing and relocating infrastructure on the south side of the Union Station Rail Corridor, east of Union Station, to allow for two additional sections of track to be installed.

Work completed to date



Built a 1.6 metre-wide duct bank spanning between Sherbourne Street and the Don River next to the rail tracks



Constructed new utility bridges to support the duct bank crossing over Parliament and Cherry streets.



Demolished the existing transmission towers once the overhead lines were removed



Energized all circuits within the newly placed duct bank

OnTrack Alliance: Soil Management and Post- Rain Check

Mohammed Ajmal Sharafudheen, Project Coordinator
Environmental Programs and Assessment

Excavated Material and Soil Management

In Ontario, excavated soil from construction sites is managed in accordance with the On-site and Excess Soil Management regulation (O. Reg. 406/19), which protects the environment by reducing waste and encouraging soil reuse. Compliance with O.Reg. 406/19 is outlined in USEP's Soil and Groundwater Management Plan.

Excavated soil from the new south concourse was reused at Wilson Yard to raise the grade at level with Don Yard. This reduced long-distance hauling and lowered greenhouse gas emissions.

Metrolinx is using SoilFLO software to optimize soil management across projects, including USEP. Since 2023, 330 loads, or 4,554 m³ of excess soil was reused at Wilson Yard, equivalent to ~2 Olympic-sized swimming pools.



Excavated soil from the south concourse stockpiled at Wilson Yard

Post-rain check

After ~15 mm of rainfall within 24 hours, USEP conducts a thorough inspection following the Erosion and Sediment Control Plan

Erosion and Sediment Control	Site Drainage and Water Accumulation	Environmental Compliance
✓ Inspect Sediment fence and sumps for damage/ overflow	✓ Identify ponding in work zones, trenches or access roads	✓ Document rainfall using gauges or weather stations
✓ Check drainage systems: catch basins, storm drains and outlets	✓ Ensure stormwater runoff is properly diverted	✓ Ensure compliance with Sanitary Discharge Agreement and other Permits



Erosion and sediment control at Wilson Yard



Catch Basin inlet with sandbag barrier

Ontario Line

We Are Here For You

Ontario Line Community Engagement Contact Information

Metrolinx will keep the community, residents and businesses informed by providing project updates, seeking input and feedback and addressing questions and concerns effectively and quickly.

Connect With Us:

- Zahrah Munas , Community Engagement Advisor Zahrah.Munas@metrolinx.com 437-328-5354
- Mark Clancy, Senior Manager, Community Engagement Mark.Clancy@metrolinx.com, 647-449-2857

Telephone 24/7 @ 416-202-5100

Ontario Line e-newsletter @ [Metrolinx.com/OntarioLine](https://www.metrolinx.com/OntarioLine)

Follow us on social media @ OntarioLine

Questions & Discussion

Next Steps for the CLC

Overview – James Burchell, Community Engagement

Next Steps

- Next meeting will be Winter/Early Spring 2026
- Minutes will be prepared and shared in advance of next meeting for discussion points
- Interim questions can be submitted via email to torontoeast@metrolinx.com.
- Encourage your neighbours to subscribe to the NEW Toronto East (Ontario Line) e-Newsletters at

<https://www.metrolinx.com/en/subscribe-to-emails>



Subscribe to Metrolinx Emails

Transit Improvements. It's Happening.

Metrolinx is improving and building transit to ultimately reduce congestion and help make travel across our region easier, more affordable and sustainable.

Subscribe to stay up to date with the latest news, progress announcements and construction updates from Metrolinx. You can unsubscribe at any time.

Personal Details

Please provide us with a few details about yourself

FIRST NAME

Enter first name

LAST NAME

Enter last name

EMAIL ADDRESS

Enter email

POSTAL/ZIP CODE (OPTIONAL)

Enter a full postal/zip code ⓘ

Subscriptions

What information would you like to receive? Check all that apply.

- ☐ Metrolinx Newsletter
- ☐ Region and Project Specific Updates

☐ I'm not a robot



Subscribe

You can also
contact us

Visit our contact us
page

Send a question

Abonnez-vous aux courriels de Metrolinx

Améliorations du transport en commun. C'est maintenant.

Metrolinx améliore et construit des transports en commun pour réduire en fin de compte la congestion et faciliter les déplacements dans notre région, de manière plus abordable et durable.

Abonnez-vous pour rester à jour avec les dernières nouvelles, les annonces de progrès et les mises à jour de travaux de construction de Metrolinx. Vous pouvez vous désabonner à tout moment.

Détails personnels

Veuillez nous fournir quelques détails sur vous

PRÉNOM

Entrez le prénom

NOM DE FAMILLE

Entrez le nom de famille

ADRESSE ÉLECTRONIQUE

Entrez l'adresse courriel

CODE POSTAL/ZIP (FACULTATIF)

Entrez un code postal/vi... ⓘ

Abonnements

Quelles informations aimeriez-vous recevoir? Cochez toutes les réponses qui s'appliquent.

- ☐ Bulletin Metrolinx
- ☐ Mises à jour spécifiques à la région et au projet

☐ Je ne suis pas un robot



S'abonner

Vous pouvez
également nous
contacter

Visitez notre page
contacter nous

Envoyer une question

Open House Event:

Union Station Enhancement Project (USEP)

Tuesday, November 4th , 4-8pm

Cooper Koo YMCA, 461 Cherry Street (2nd Floor Meeting Room)

1. Union Station Activities
2. East Track Enhancements
3. Hydro Utility Infrastructure Enhancements
4. Don/Wilson Yard Activities

