

Union Station Enhancement Project

Major Landowners / Tenants Meeting

December 10, 2025



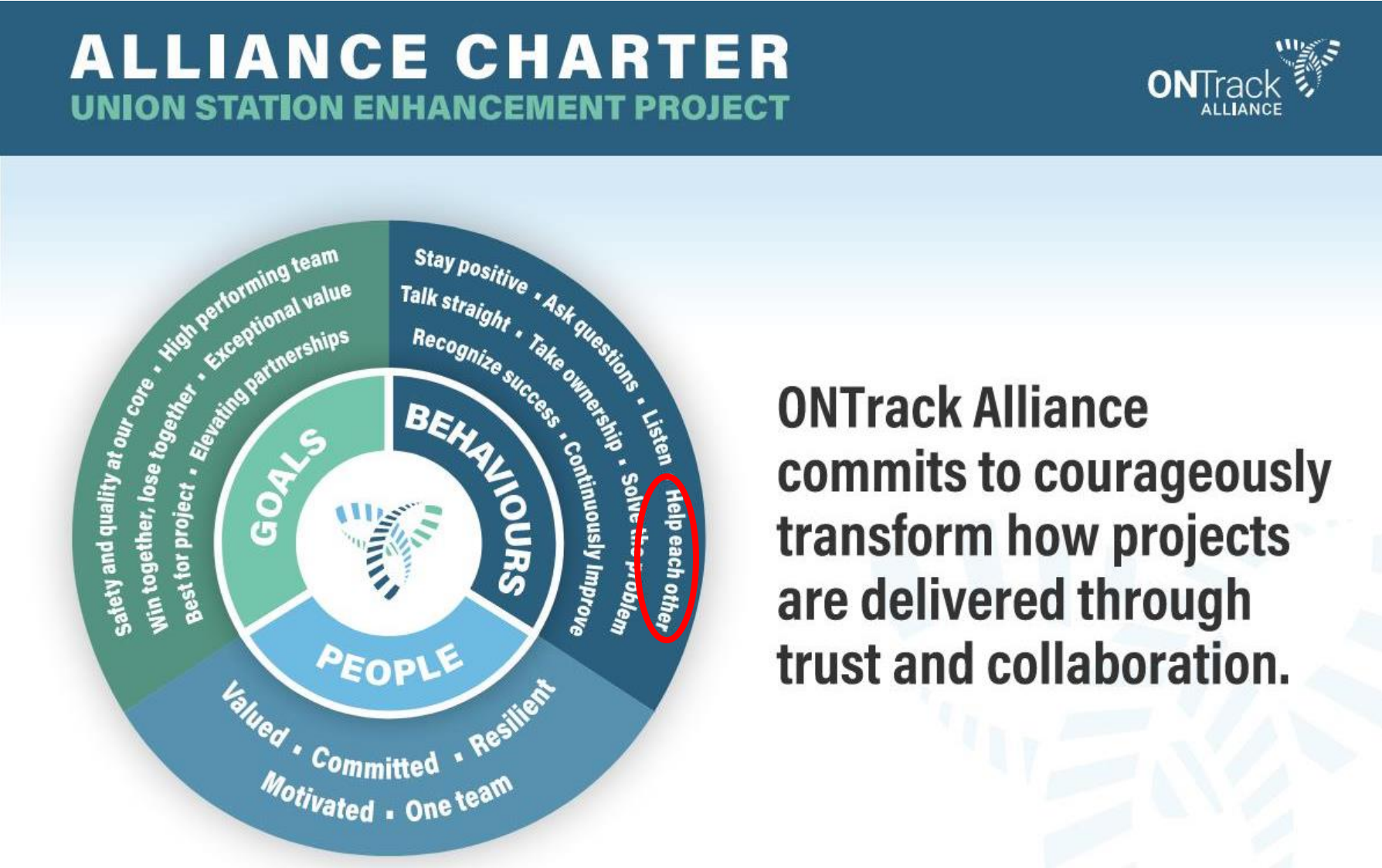
LAND ACKNOWLEDGEMENT

Metrolinx acknowledges that we connect communities by building and operating transit within the traditional lands of the Anishinaabe, the Haudenosaunee and the Wendat peoples, for whom these lands continue to have great importance.

Treaties between First Nations and governments cover these lands, and the promises contained in these Treaties remain relevant to this day.

Metrolinx and its employees are committed to understanding the history of these lands and the continued impacts of colonization and take responsibility for actions to advance reconciliation.

Metrolinx will continue to seek the knowledge, expertise and experience of Indigenous partners and commits to doing business in a manner that is built on a foundation of trust, respect, and collaboration.



**ONTrack Alliance
commits to courageously
transform how projects
are delivered through
trust and collaboration.**

AGENDA

1 UNION STATION ENHANCEMENT PROJECT (USEP) OVERVIEW

2 CONSTRUCTION UPDATES

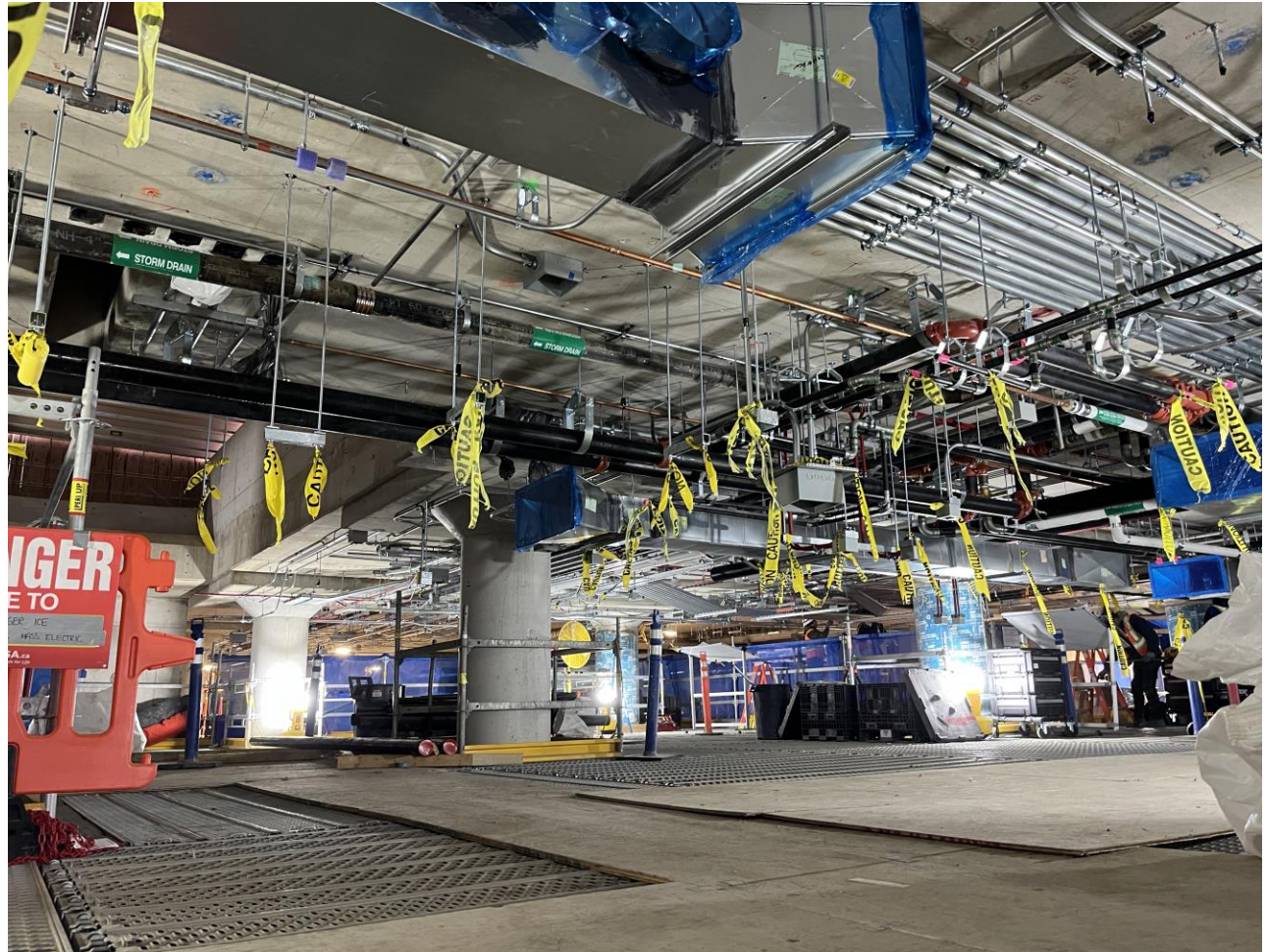
3 CUSTOMER UPDATES

4 NEXT STEPS

Your Key OnTrack Alliance Contacts:

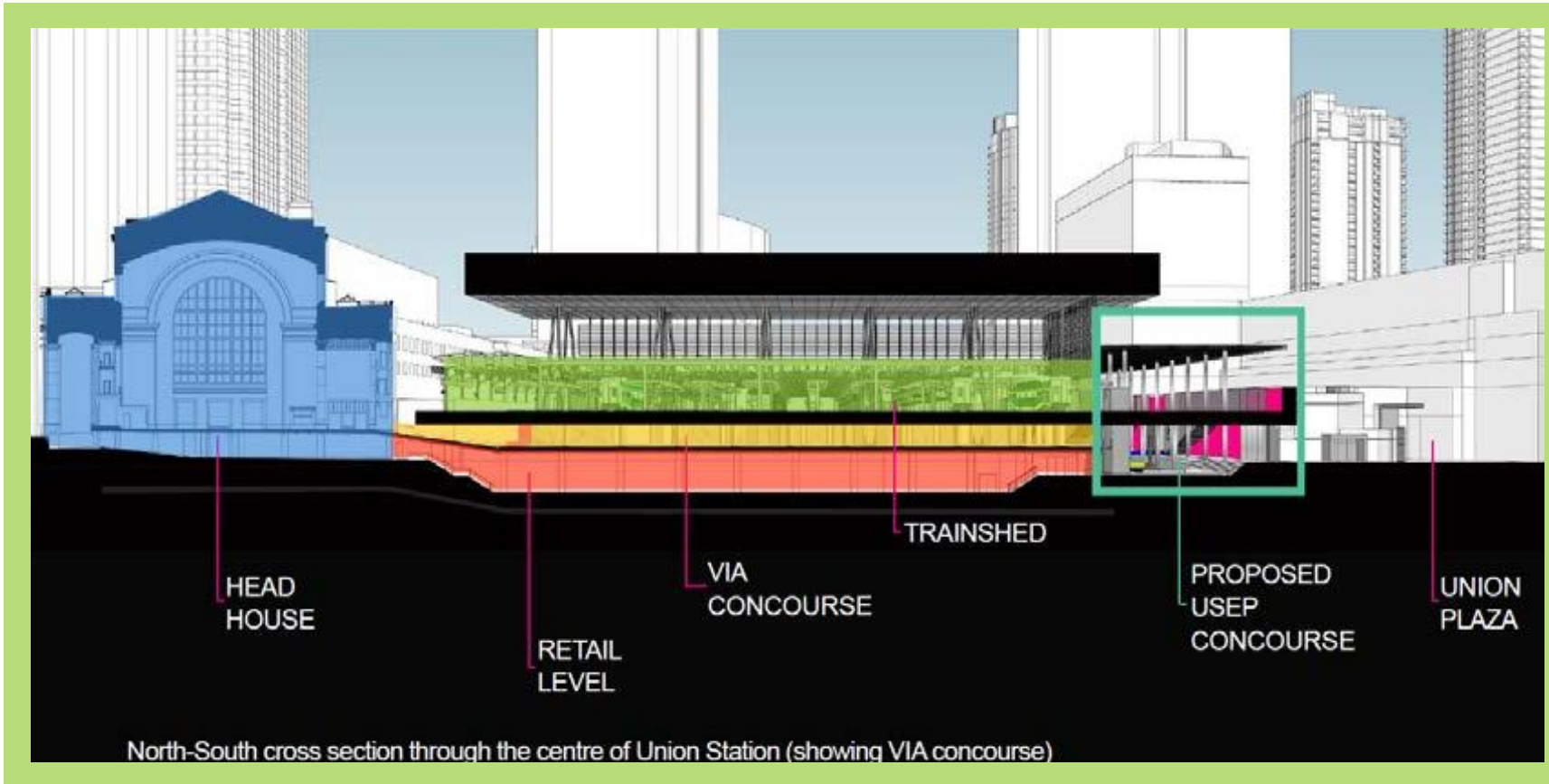
- Sarah Jayne Swan, Project Coordinator, Stakeholder & Communications, ONTrack Alliance, sarah-jayne.swan@wsp.com
- Josh Speedie, Communications Manager, ONTrack Alliance, Joshua.Speedie@wsp.com
- James Burchell, Advisor, Community Engagement and Issues Manager, Metrolinx james.burchell@metrolinx.com

CONCOURSE FIT-OUT



USEP PROJECT OVERVIEW

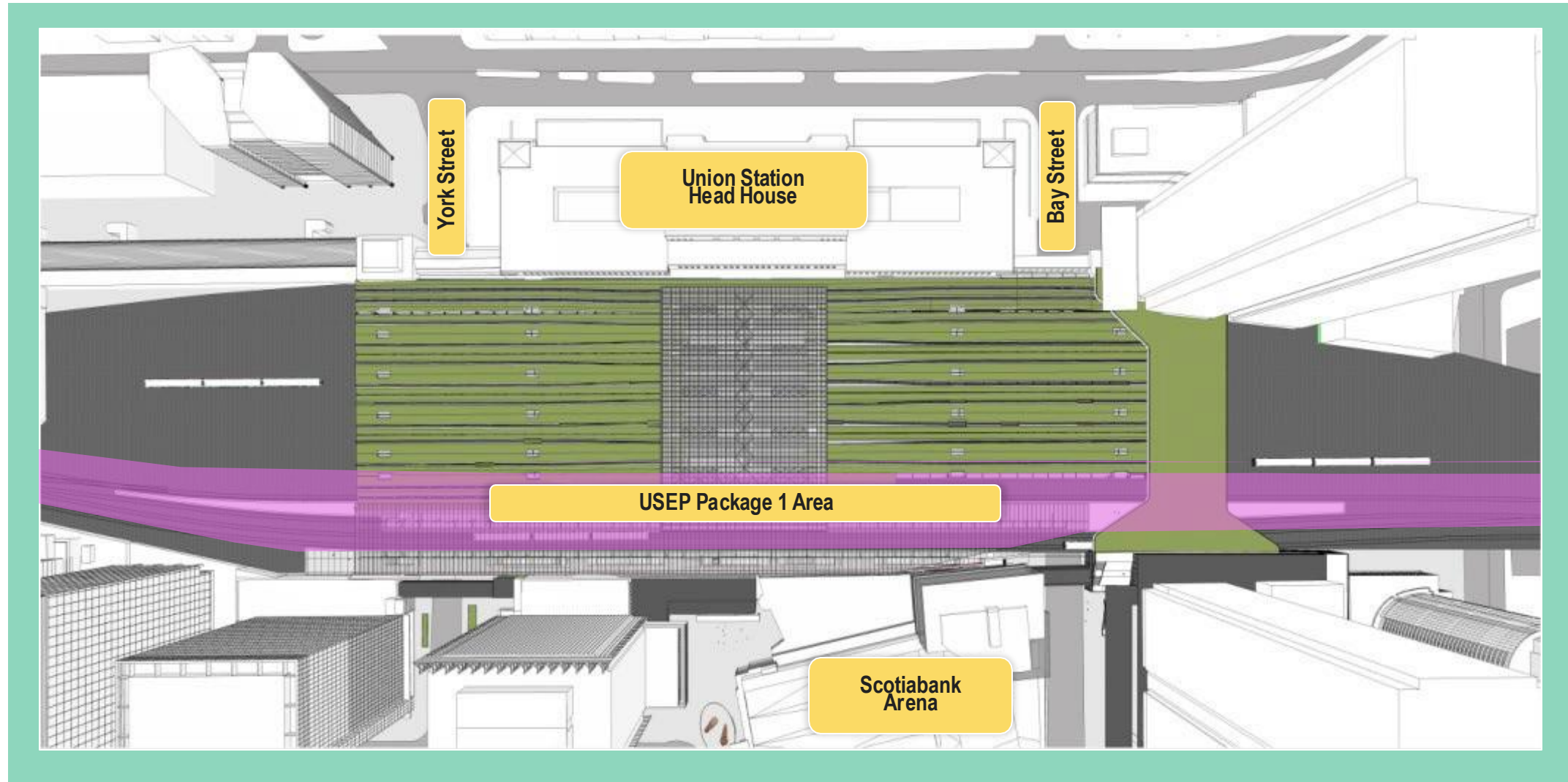
GO EXPANSION ENABLING WORKS



The Union Station Enhancement Project (USEP) is a GO Expansion Enabling Works project that is required in advance of the On-Corridor Works project in order to facilitate future track closures for the reconstruction of platforms within the existing trainshed, and to optimize the overall On-Corridor Works construction schedule.

The USEP is required in addition to the rehabilitation and upgrades already completed or near completion at Union Station.

UNION STATION ENHANCEMENT PROJECT



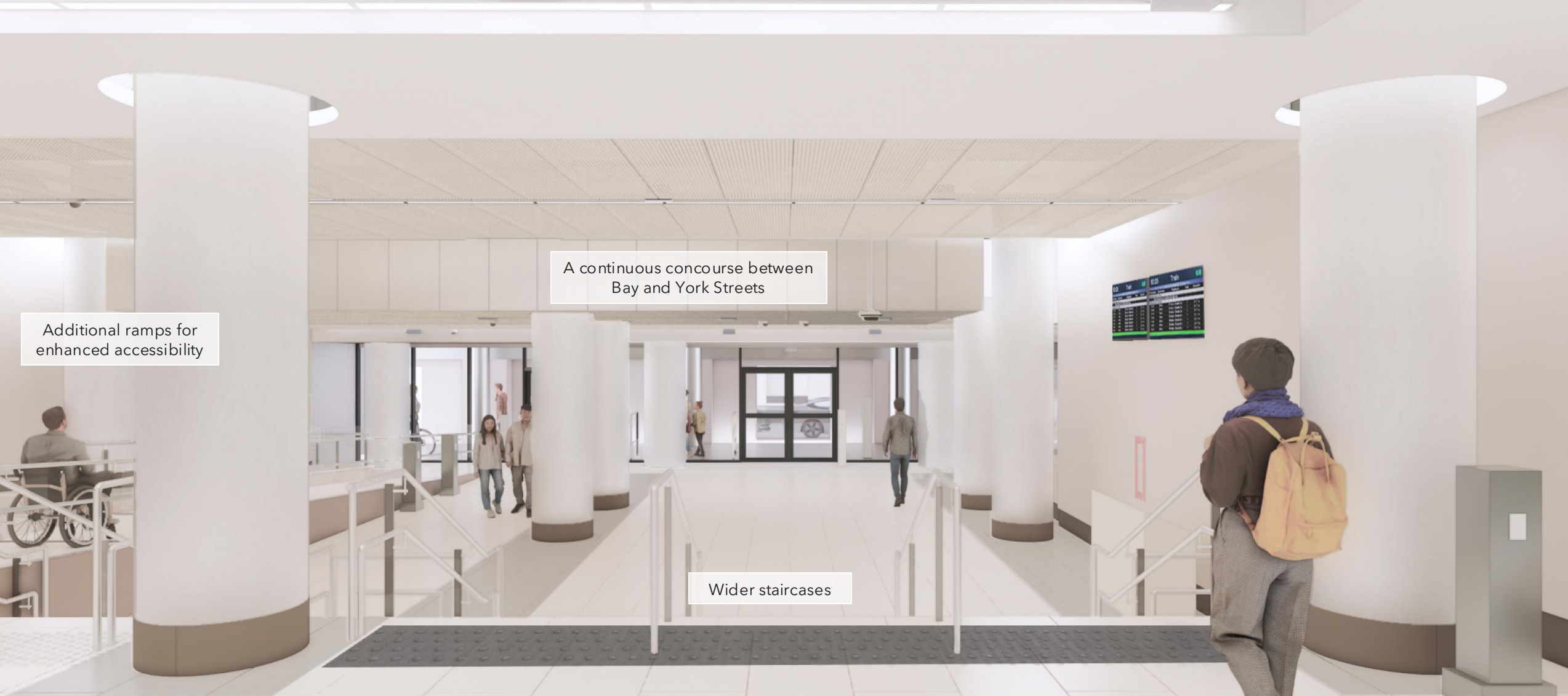
CONCEPTUAL RENDERINGS



Artists rendering. Design subject to change.

Figure: Conceptual rendering of continuous concourse from York Street to Bay Street

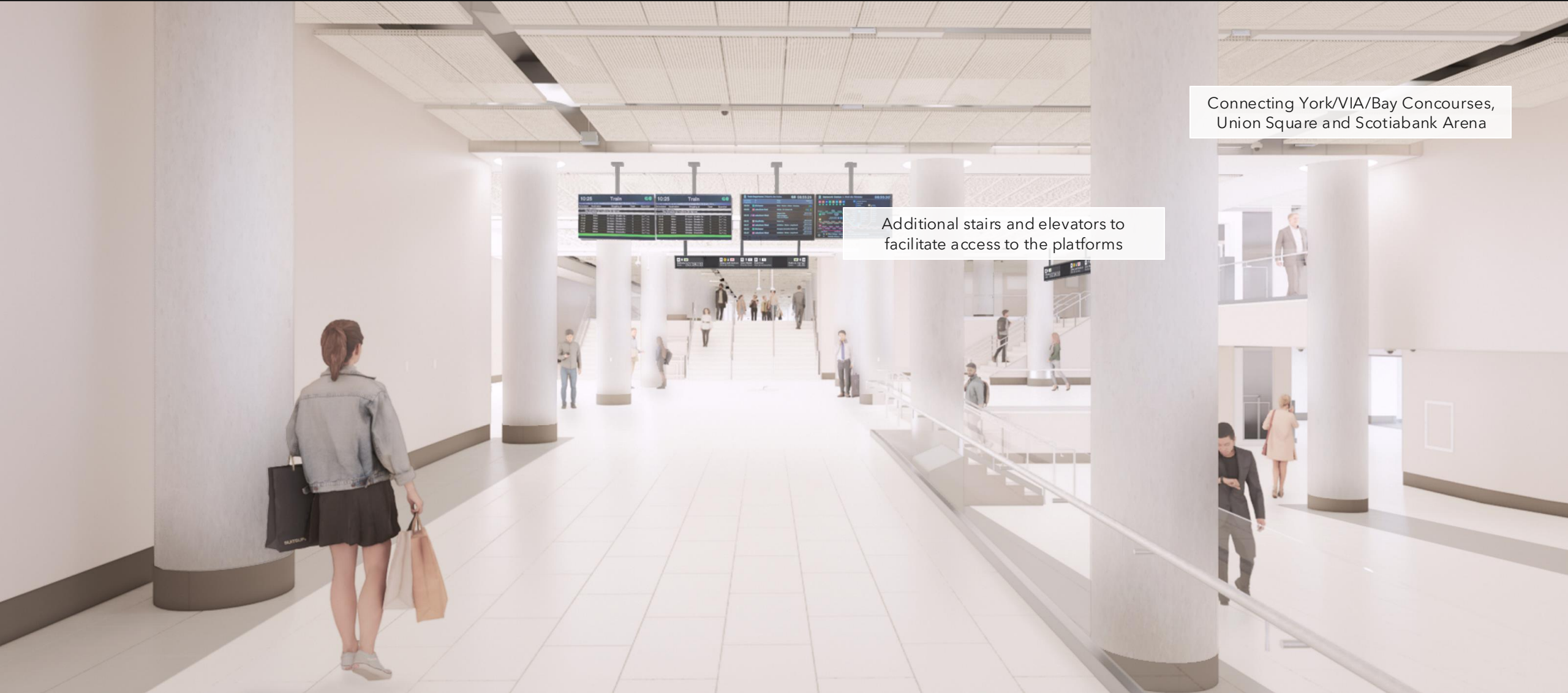
CONCEPTUAL RENDERINGS



CONCEPTUAL RENDERINGS



CONCEPTUAL RENDERINGS



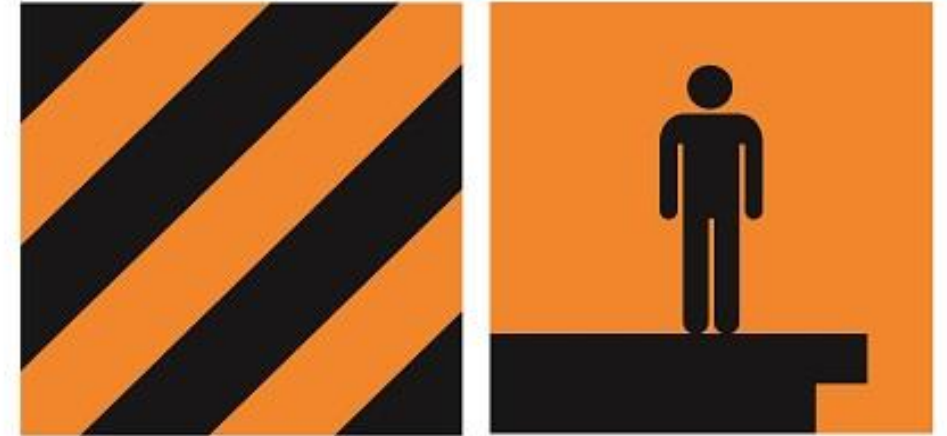
Connecting York/VIA/Bay Concourses,
Union Square and Scotiabank Arena

Additional stairs and elevators to
facilitate access to the platforms

CONSTRUCTION UPDATES

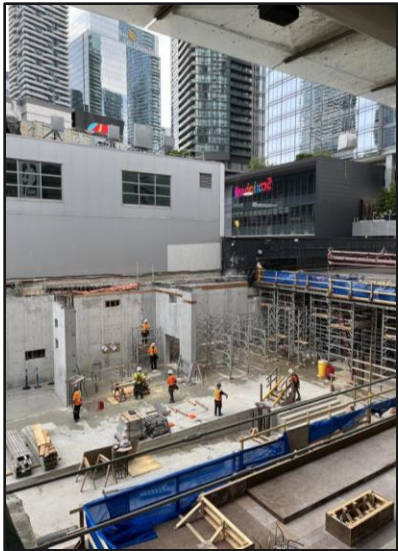
UNION STATION ENHANCEMENT PROJECT CONSTRUCTION

- **Concourse and Track Level Activity**
 - Progress of concourse and track level updates across Areas A - J.
- **Customer Communications**
- **Next Steps**

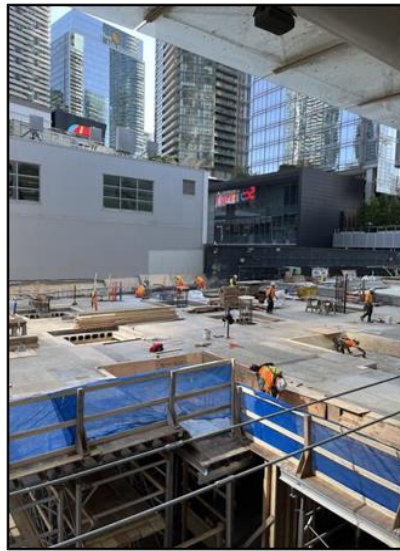


TRACK LEVEL - PROGRESS

Areas F (south east facing)



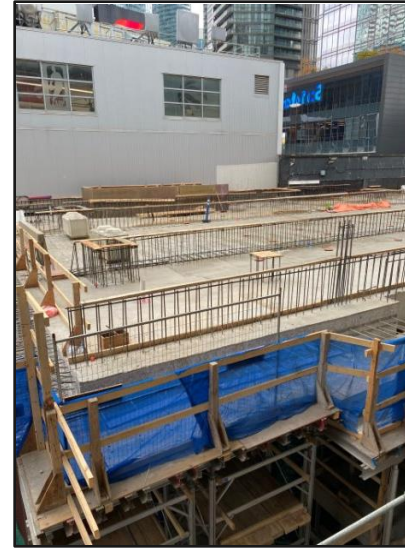
August, 2025



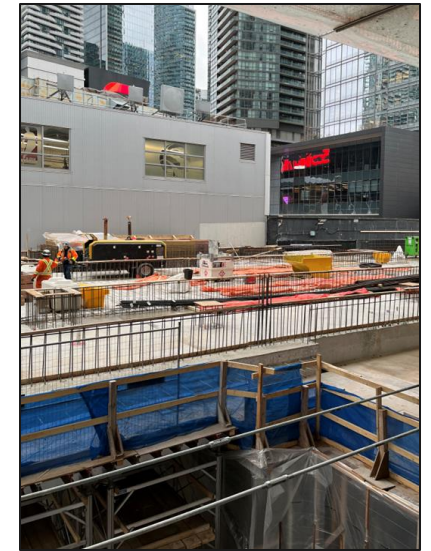
September, 2025



October, 2025



November, 2025



December, 2025

TRACK LEVEL - WEST OF YORK ST (AREA A)

- Teamway staircase rebar ongoing
- North and south wall pours complete, stripping ongoing
- Overhead beam pour complete and curing
- Prepping for mechanical and electrical work

Next steps:

- Underground plumbing and electrical, mechanical works

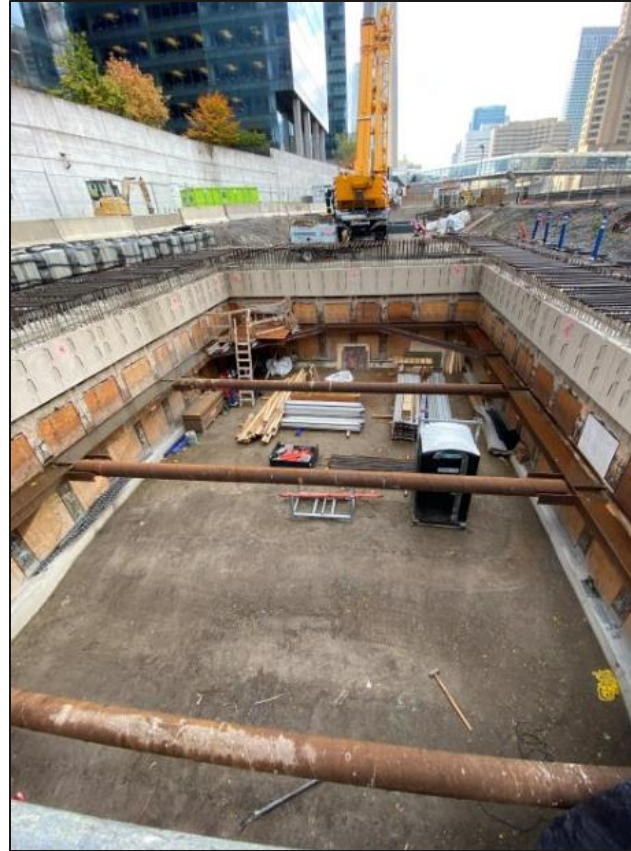
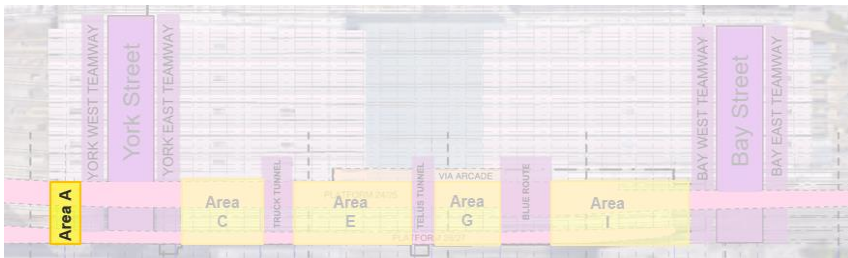


Photo: Area A
(west facing)
November 2025

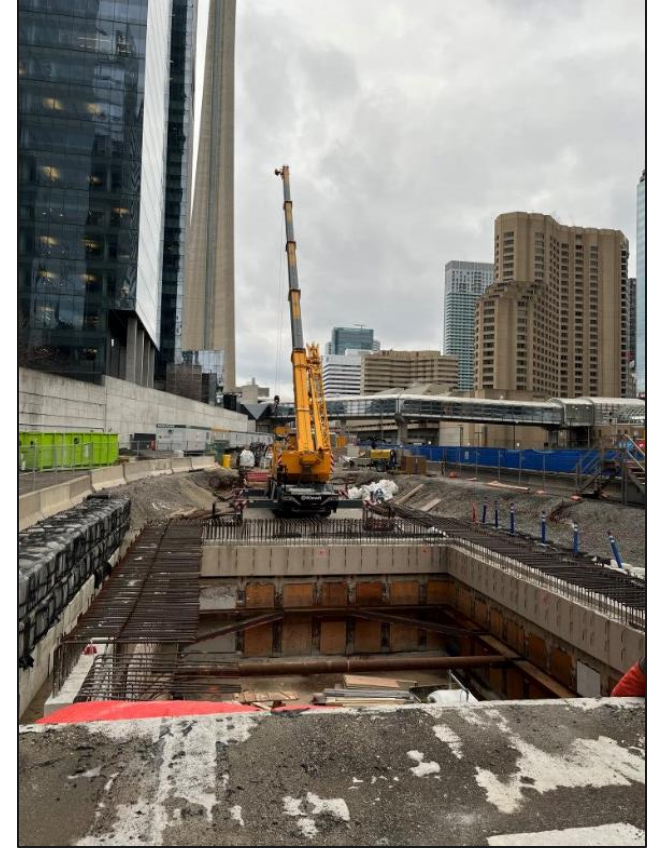


Photo: Area A
(west facing)
December 2025

TRACK LEVEL - YORK STREET TEAMWAYS (AREA B)

Enwave Scope

- Full closure of the south side of the YWT complete
- Micropiles ongoing at the south side

Next Steps:

- Work on chill water pipe, electrical relocations
- Impacts to Quadreal East-facing door until December 19, 2025



Photo: YWT Large opening into Area A,
December, 2025

TRACK LEVEL - EAST OF YORK ST (AREA C)

- Fit-out of this area is ongoing
- Block wall installation, electrical hangers and dewatering
- Staircase openings poured
- 1929 wall curb pour complete, moving east
- Forming of platform walls
- HVAC fan coils on south side
- Next steps: stripping 1929 curb, periscaffolding removal at southside

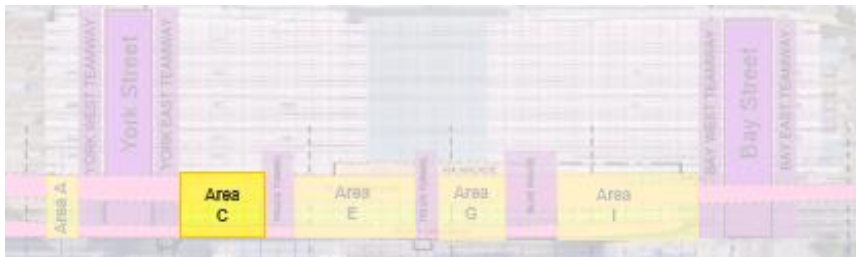


Photo: Area C November 2025

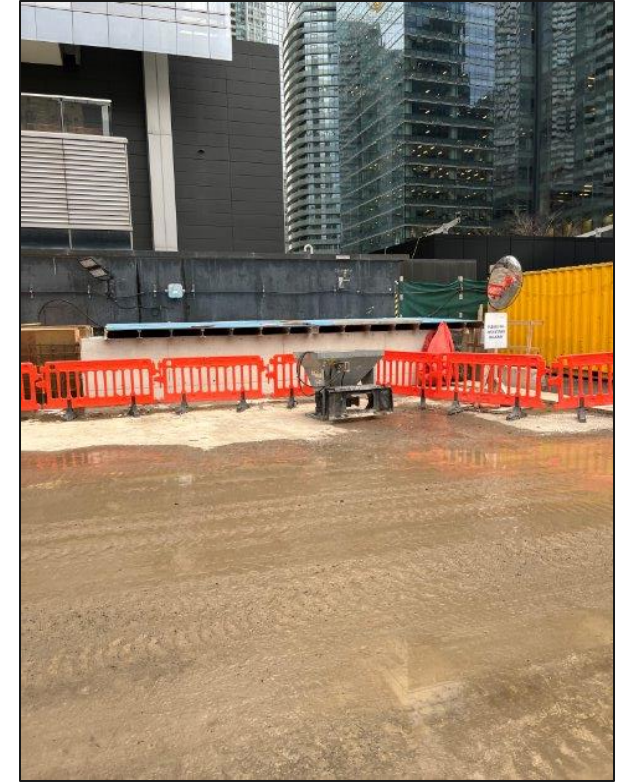


Photo: Area C December 2025

TRUCK TUNNEL (AREA D)

- Mech room 1 demo works ongoing
- Remediation at South Beam ongoing
- Staircase work ongoing
- North shoring removed
- Electrical and Mechanical fit-out progressing east

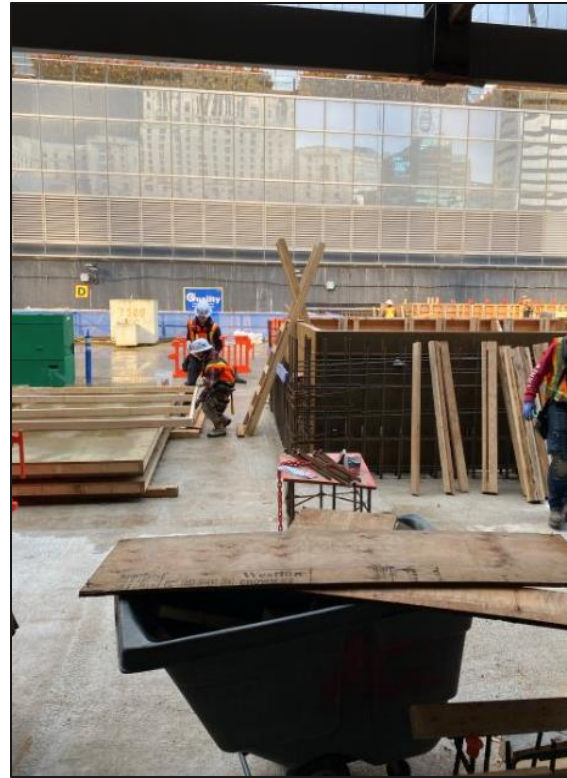
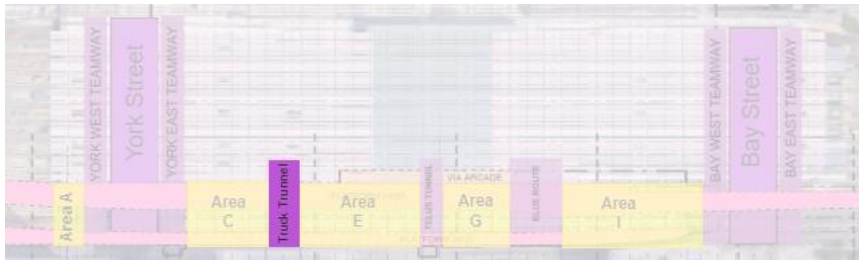


Photo: Area D, November 2025

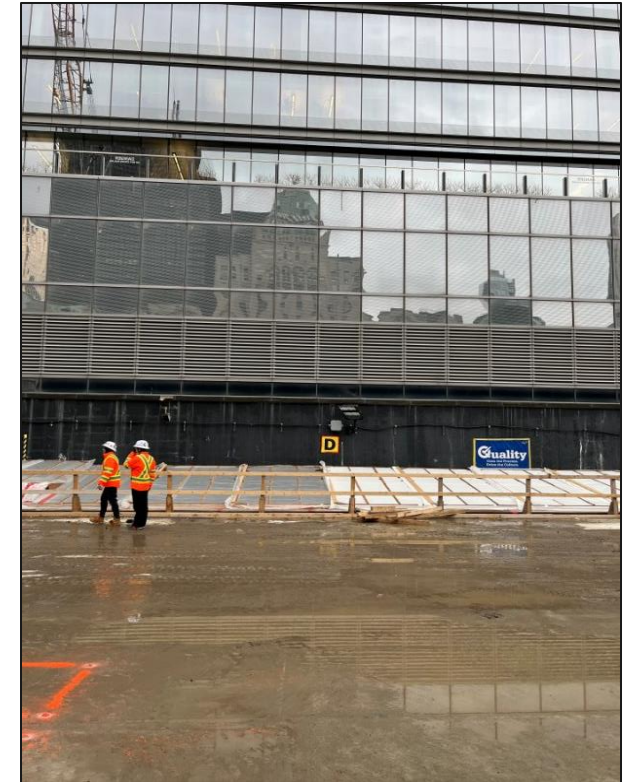


Photo: Area D, December 2025

TRACK LEVEL - AREA E

- Scanning of the rebar in the signal bunker is ongoing
- Continuing 1929 wall repairs
- Chipping of the atrium is ongoing
- Formwork for vertical access complete
- Formwork for concourse level staircase complete
- Prep for west crane removal

Next steps: Capital formwork, mechanical and electrical anchor and hanger inserts

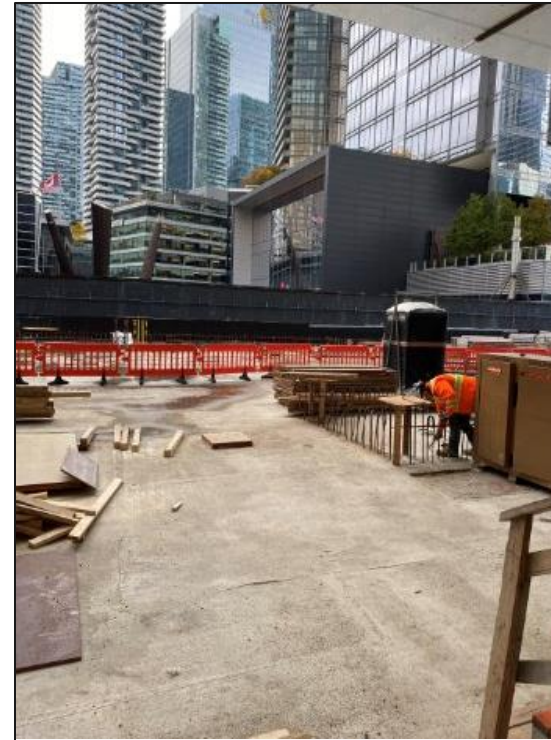


Photo: Track Slab Poured,
November 2025

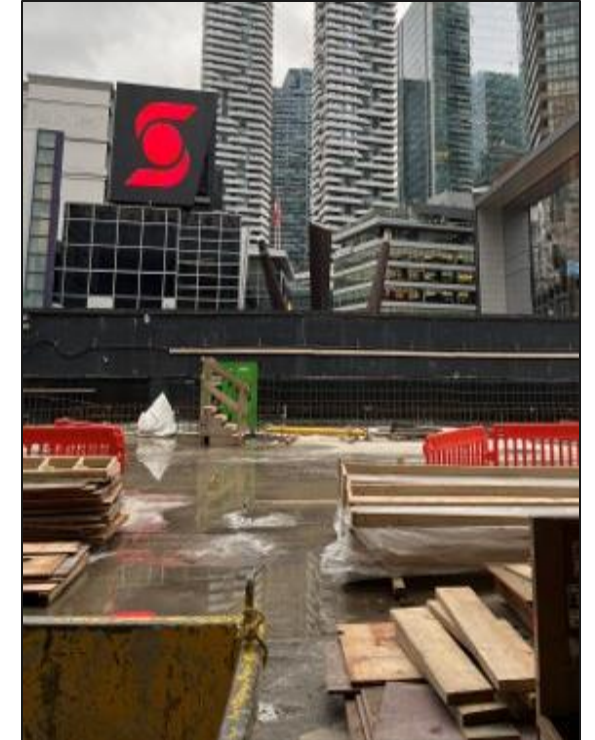


Photo: December 2025

TRACK LEVEL - AREAS F/G

South Side

- EFG track 4 stripping ongoing
- Patch and parge
- Rebar for vertical access ongoing

North Side

- Chipping on the atrium supports is ongoing
- Vertical access work ongoing
- Continuing 1929 wall tie in

Mechanical Room 2

- Concrete and structural work complete
- Next Steps: Fit out



Photo: Area F/G - Shoring installation, November 2025

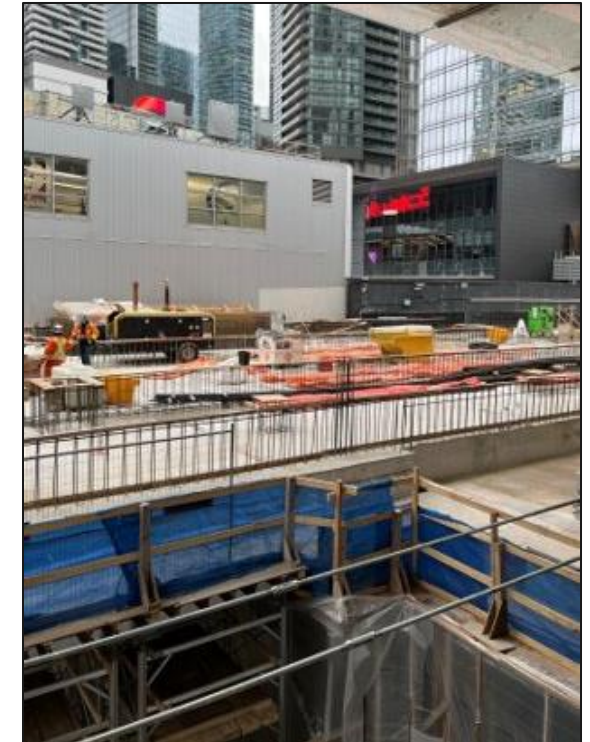


Photo: Area F/G - December 2025

TRACK LEVEL - AREA H 'BLUE ROUTE'

- Design and work plan discussions are underway, site visits and investigations ongoing
- Caisson excavations ongoing
- Exposing rebar ongoing, prep for construction

Next Steps: Backfilling and minor works upcoming



Photo: Blue Route openings on the West Wall, November 2025



Photo: Blue Route openings on the West Wall, December 2025

BAY ARCADE - BLUE ROUTE

Purpose: To build a temporary ramp due to closure of Telus Ramp.

Updates:

- Construction of temporary ramp within hoarding is complete
- Auxiliary ramp curb formwork is complete
- Bulkhead modifications complete
- Railings fabrication ongoing
- Hoarding removal mid-January

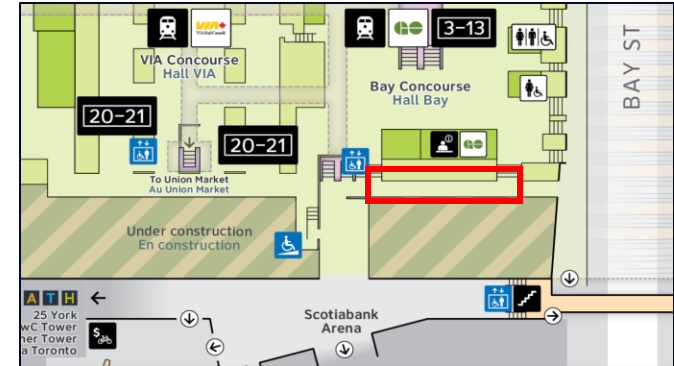
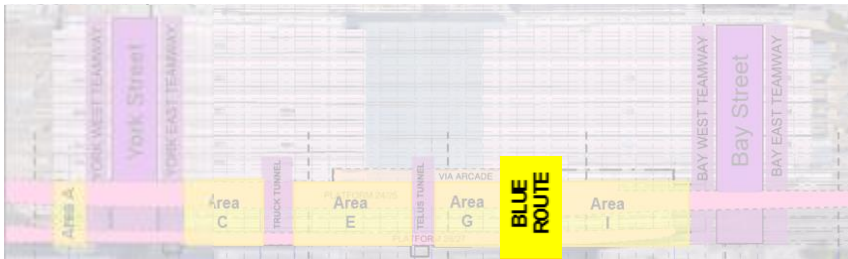


Photo: Hoarding (looking east in the Bay Arcade)
July 2025

TRACK LEVEL - AREA I/J

Area I

- Rebar on north and south walls is complete
- South wall pour is complete
- Formwork for columns ongoing
- Cistern walls forming and pour is complete
- SPC 45 pour complete
- Slab on grade cured and complete
- Mechanical Room 3: pile caps are complete
- Next steps: Stripping cistern walls

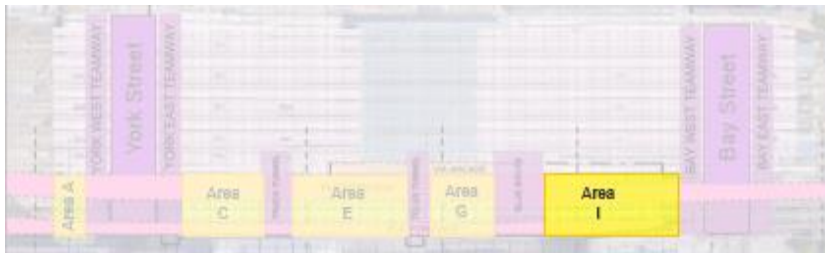


Photo: Area I, November 2025



Photo: Area I, December 2025

TRACK LEVEL - AREA I/J

Area J

- Bay Bridge: Support beam for Bay bridge was poured
- Shoring is complete
- Next steps: Beam review and investigations

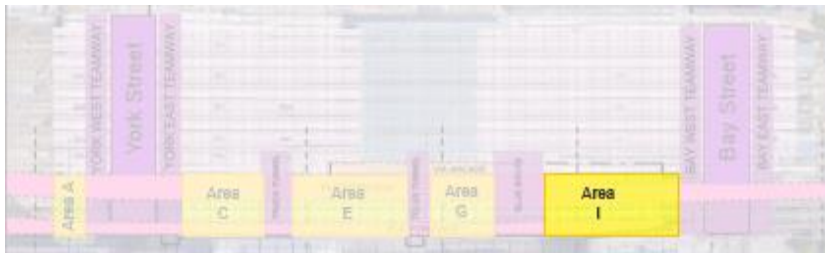


Photo: Area J, November 2025



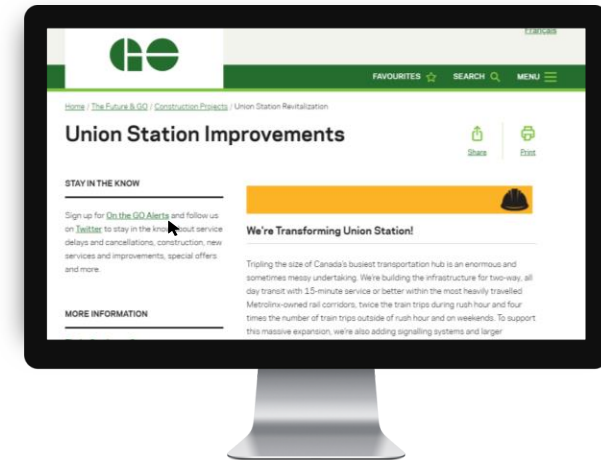
Photo: Area J, December 2025

CUSTOMER UPDATES

ENWAVE

- Quadreal east-facing door impacted.
- Prep for the opening of new temporary ramp

Construction updates posted on the web at:
[Union Station Improvements](#)
Register for [On the GO alerts](#) to stay in the know



NEXT STEPS



Contacts:

Sarah Jayne Swan, Project Coordinator, Stakeholder & Communications, ONTrack Alliance
sarah-jayne.swan@wsp.com

Josh Speedie, Communications Manager, ONTrack Alliance
Joshua.Speedie@wsp.com

James Burchell, Advisor, Community Engagement and Issues Manager, Metrolinx
James.burchell@metrolinx.com



@Metrolinx



@GOExpansion



<https://www.metrolinx.com/union>



TorontoWest@metrolinx.com

