



# **Public Information Session: Bowmanville Extension Simcoe St. Bridge Replacement**

**Tuesday, January 6, 2026**

# HOW TO PARTICIPATE

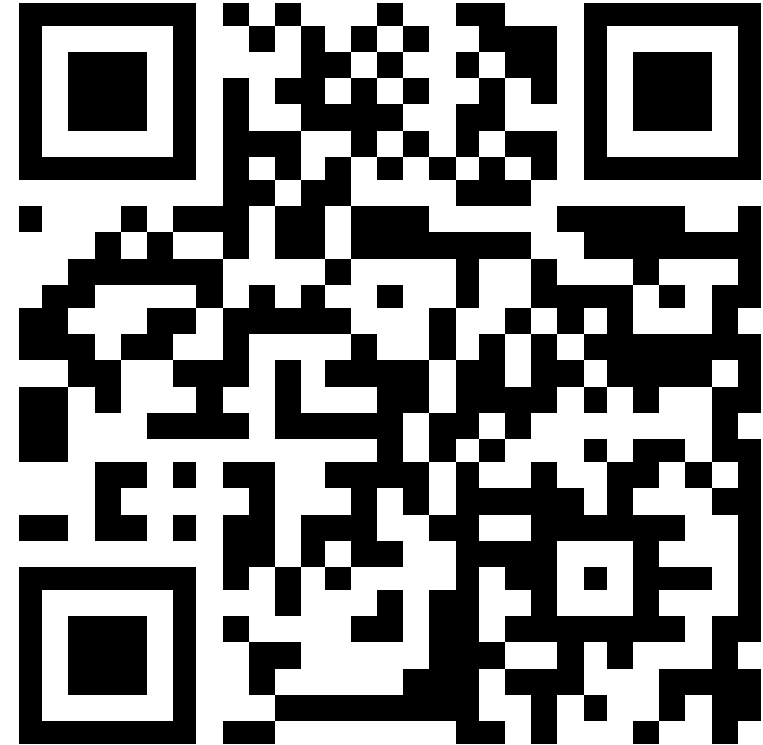
Have a question?

Share it on Slido by scanning the QR code or by visiting [www.slido.com](https://www.slido.com) and enter code #3952 637.

On Slido, you can vote for the questions you'd like answered!

During the public information session, we'll focus on questions with the most votes and do our best to cover as many different topics as possible.

Slido is your way to participate - so join in and make your voice heard!



**Joining as a participant?**

# 3952 637





# LAND ACKNOWLEDGEMENT

Metrolinx acknowledges that we connect communities by building and operating transit within the traditional lands of the Anishinaabe, the Haudenosaunee and the Wendat peoples, for whom these lands continue to have great importance.

Treaties between First Nations and governments cover these lands, and the promises contained in these Treaties remain relevant to this day.

Metrolinx and its employees are committed to understanding the history of these lands and the continued impacts of colonization and take responsibility for actions to advance reconciliation.

Metrolinx will continue to seek the knowledge, expertise and experience of Indigenous partners and commits to doing business in a manner that is built on a foundation of trust, respect, and collaboration.





# SAFETY MOMENT - TRACK SAFETY

Remember, trains can appear at any point while you're waiting on the platform.

Train time is anytime!

*When on the platform, please remember to:*

- Always stand behind the yellow line while waiting to board your train.
- Spread out along the platform to avoid crowding.
- Mind the gaps between the platform and the train when boarding or exiting.
- Always allow passengers to exit the train before boarding to avoid congestion.
- Keep your head up and headphones out. Be aware of your surroundings and station signals.

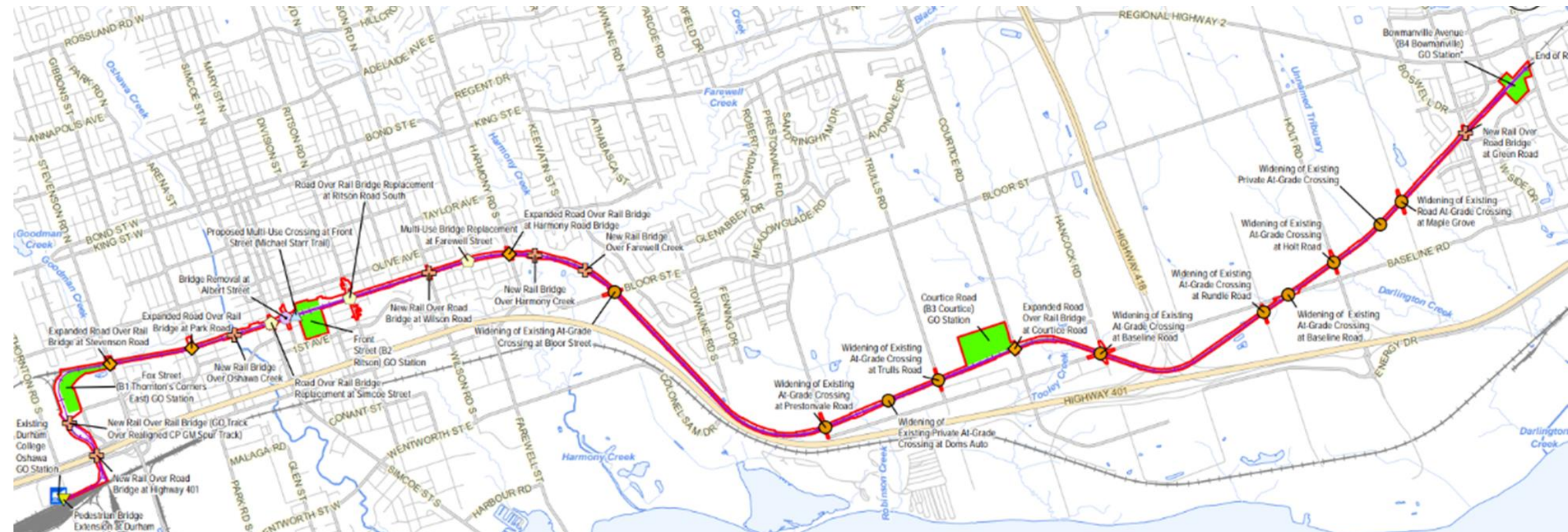
*See more at: [gotransit.com/en/travelling-on-go/safety-and-security/safety-tips](https://gotransit.com/en/travelling-on-go/safety-and-security/safety-tips)*



# Bowmanville Extension Project Update



# PROJECT OVERVIEW



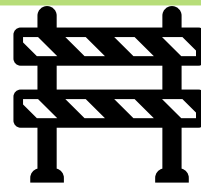
**18.7 km  
NEW RAIL LINE**



**13 BRIDGES  
NEW/REPLACED/WIDENED  
1 BRIDGE REMOVAL**



**3 MULTI-USE  
CROSSINGS**



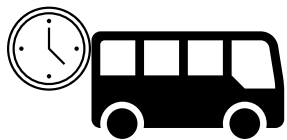
**10 WIDENED AT-GRADE  
CROSSINGS**



**17 LOCATIONS OF WATER  
SUPPLY/SANITARY SEWER  
MODIFICATIONS**

*Note: Subject to change based on final design*

# BENEFITS



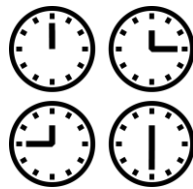
## SAVED TIME

Save **15 minutes** compared to travelling via **GO bus** from Bowmanville to connect to a Union-bound train in Oshawa.



## FASTER TRAVEL

Faster and more reliable travel times.



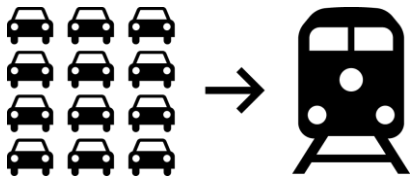
## ALL DAY SERVICE

Provides **30-minute peak weekday service** and **hourly off-peak and weekend service**.



## URBAN GROWTH

Strengthening economic growth by **connecting** employment clusters, **urban growth centres** and residential areas.



## REDUCED CONGESTION

More trains = reduced congestion across the **region** and transportation related **collisions, injuries and fatalities**.



## IMPROVED HEALTH

**Active modes of transportation** such as **walking or cycling** to access transit facilities are encouraged by constructing station locations in dense residential areas.



## ECONOMIC BENEFITS

Rail Service Extension results in **transit user benefits of \$757 M** over the project lifecycle.



## INCREASED RIDERSHIP

More GO Transit options will **increase ridership in Durham Region by 4.9 million in 2041**.



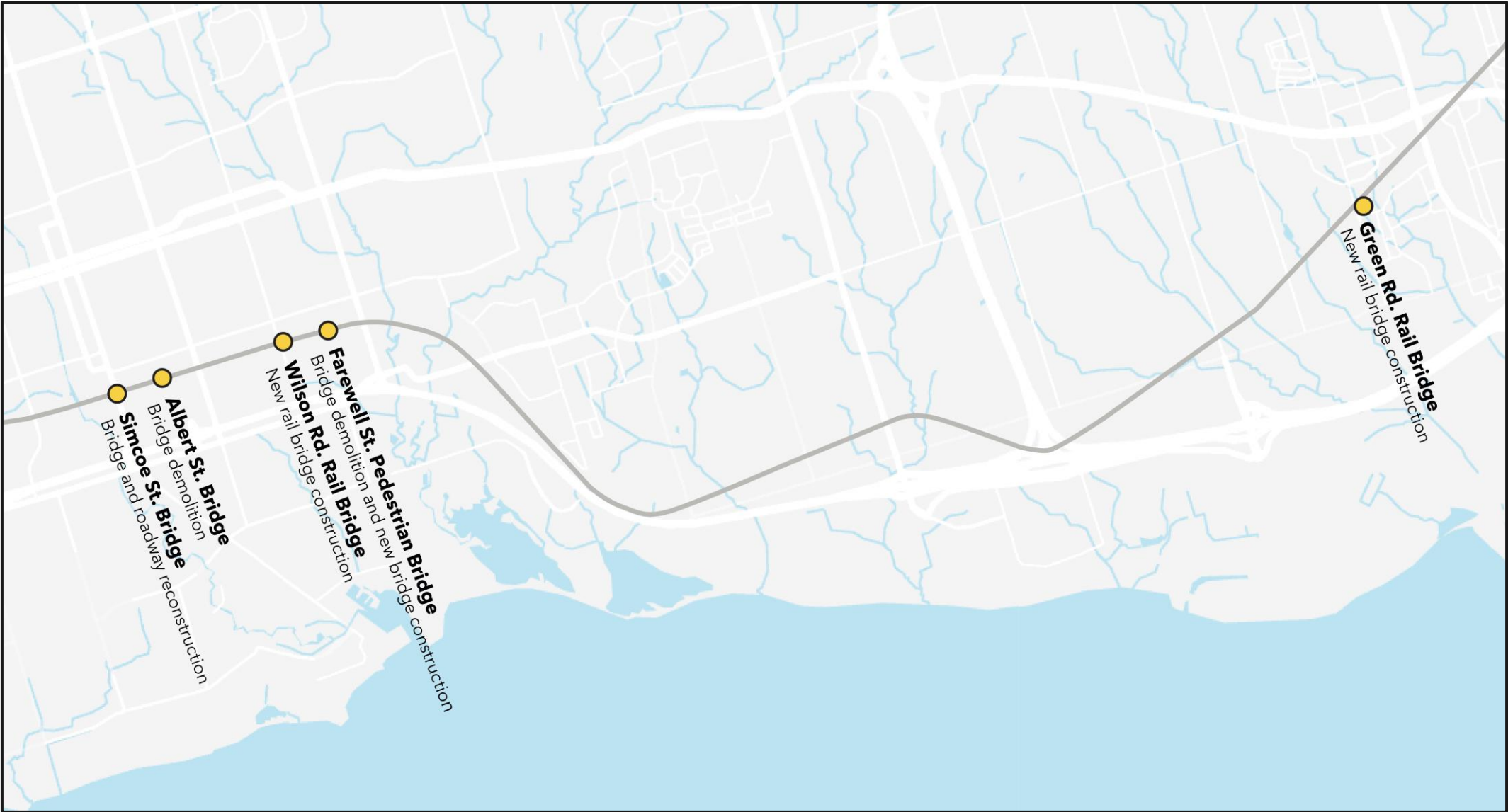
# COMPLETED: ALBERT STREET WATERMAIN RELOCATION

- ✓ Worked with the local residents to ensure that access to their driveways were maintained throughout construction
- ✓ Worked with Simcoe Hall Settlement House to ensure access to parking was maintained during construction
- ✓ Worked with contractor to ensure safety and cleanliness of the site, minimize parking impacts for neighbours, restricted idling to minimize disturbances to the community and ensured access for bus route transporting students for their summer program
- ✓ Worked with Holy Cross Church to minimize trespassing into their property as a detour route during construction





# UPCOMING BRIDGE WORK

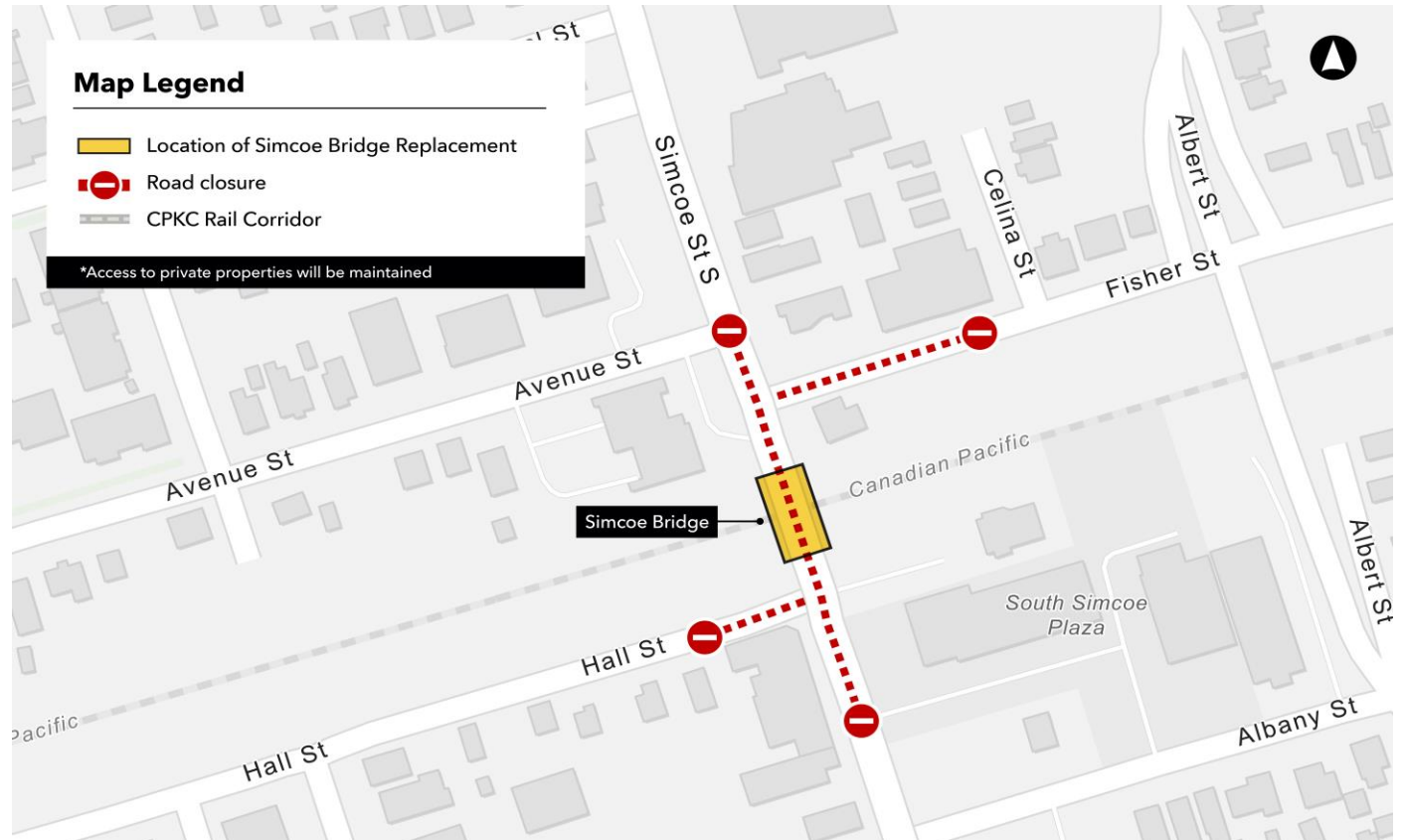


# Simcoe St. Bridge Replacement



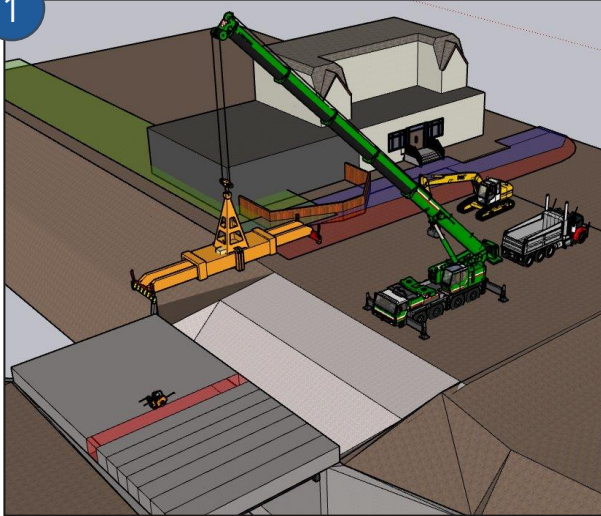
# REQUIRED BRIDGE REPLACEMENT AND ROAD CLOSURE

- The replacement of the Simcoe Street Bridge is required to accommodate a new GO track.
- During construction, Simcoe Street will be closed between Avenue Street and Albany Street for approximately 2 years.
- The new bridge will be longer than the existing bridge.
- The longer span means the bridge structure must be deeper, and the road must be higher.
- A full closure and bridge replacement is necessary: the existing bridge is over 100 years old, and so a phased partial closure/demolition would not be safe.
- Metrolinx has worked closely with the City of Oshawa and Region of Durham to ensure measures are in place to minimize traffic impacts and maintain connectivity throughout the construction period.



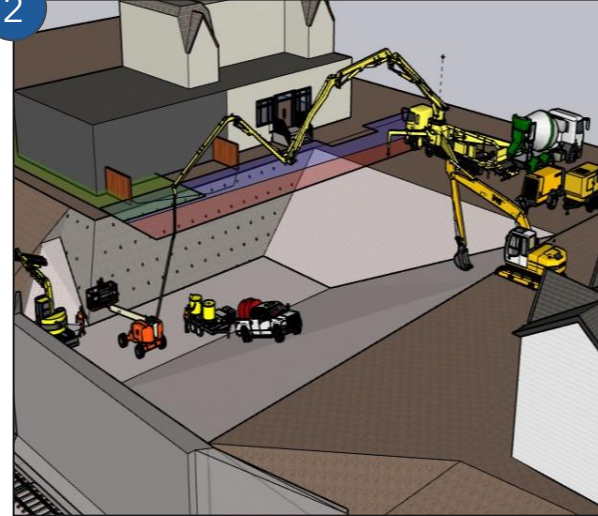
# CONSTRUCTION STAGING OVERVIEW

1



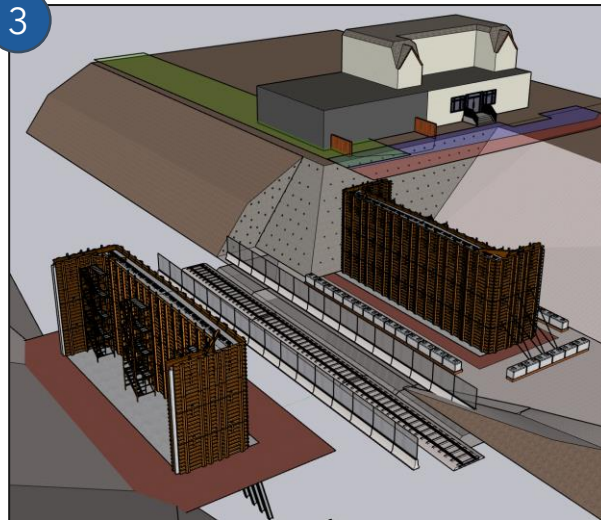
Removal of superstructure including the existing bridge and road.

2



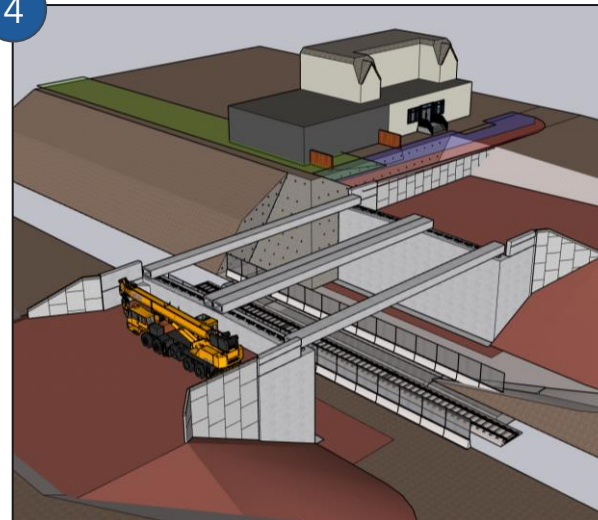
Removal of substructure including existing bridge supports and abutments. Construction of soil nail wall to stabilize the ground for excavation and construction.

3



Construction of new bridge substructure including supports and abutments.

4

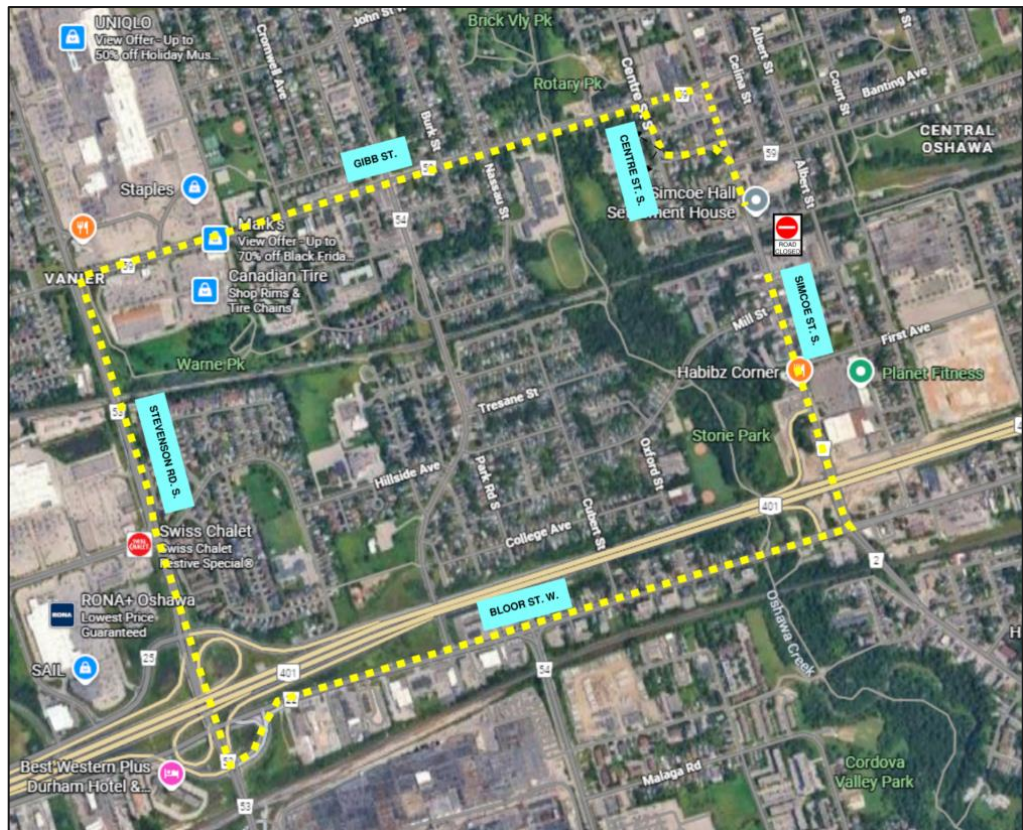


Construction of the new bridge, including the use of prestressed concrete box girders, approaches and other retaining walls.



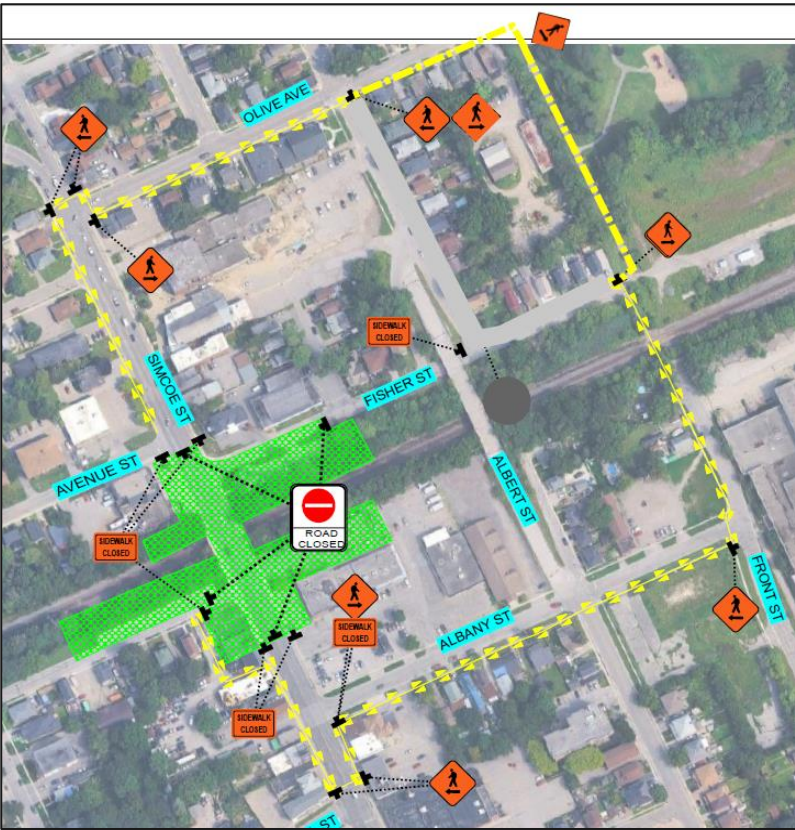
# PLANNED DETOURS

## Traffic and Public Transit



Vehicular traffic will be detoured via Stevenson Road during Simcoe Street bridge works. Local traffic on residential streets will be maintained during construction. GO bus routes 52, 56 and 92 have been detoured around the closure area. Local transit services will be detoured, please contact Durham Region Transit for up-to-date service information.

## Active Transportation



Pedestrians will be detoured to Michael Starr Trail from Olive Avenue and Albany Street during Simcoe Street bridge works. Pedestrian traffic will be maintained on Fisher Street.

# FISHER STREET CUL-DE-SAC

- To keep drivers safe, a new cul-de-sac will be added at the intersection of Fisher Street and Simcoe Street because the new Simcoe Street Bridge will be higher than before.
- The cul-de-sac will accommodate emergency vehicle access, and local access to businesses and residences in the area will be maintained.
- Construction of Fisher Street roadworks (including this cul-de-sac) will occur concurrently with the main Simcoe Street roadworks.

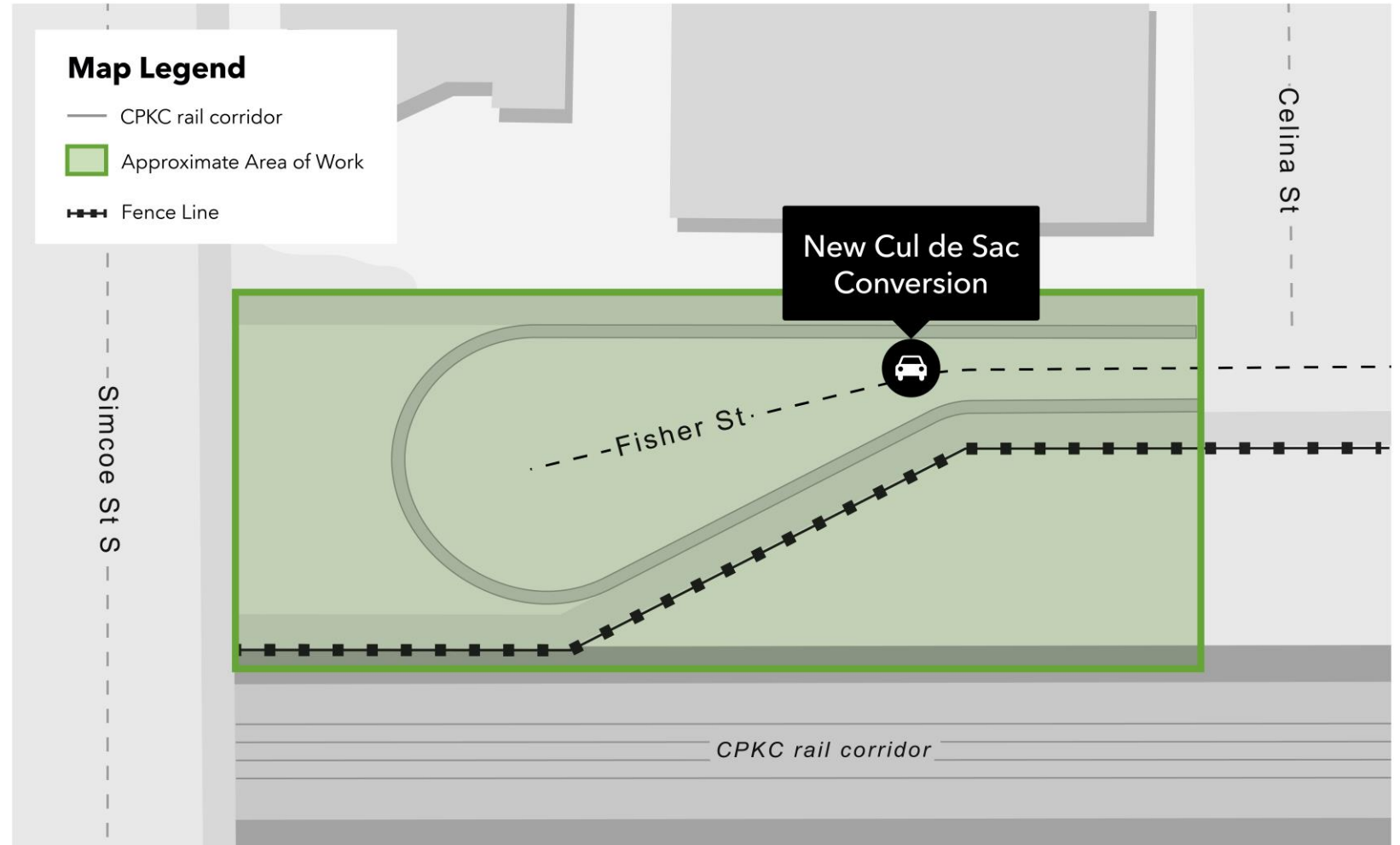



Image shown is for illustrative purposes only and may not represent the actual scale.




# MANAGING IMPACTS ON RESIDENTS, DRIVERS, TRANSIT USERS, AND PEDESTRIANS

- **Ongoing Traffic Monitoring** - Traffic performance will be monitored using a complaints-based system overseen by the Construction Traffic Management Committee, including Metrolinx, the City of Oshawa, the Region of Durham, and the Ministry of Transportation, enabling timely adjustments to traffic measures, as required, to minimize disruption.
- **Advance signage** has been installed since mid-December to communicate the upcoming closure to drivers and pedestrians.
- **Wayfinding and detour signage** will be in place to communicate alternate routes for drivers and pedestrians in advance of the closure of Simcoe Street.
- **Pedestrian detour via Michael Starr Trail** and other sidewalks are barrier-free, and wide enough to accommodate a mobility device. While the level crossing is already lit, the City and Metrolinx are working to improve street lighting between Olive Avenue and Fisher Street.
- **Work will be conducted Monday to Friday from 7:00 a.m. to 5:00 p.m.** to minimize disruption to nearby residents.
- **Vibration/Noise/Air Quality monitors** will be installed as needed to ensure levels stay within the allowable limits.
- **Lights will be directed into the work site** to minimize light pollution into nearby buildings and businesses.


# ONGOING COMMUNICATIONS AND ENGAGEMENT


 **Canvassing and Notice Drops:** Approximately 9,500 notices have been distributed to residents and businesses in the surrounding area. More notices will be distributed in the future as we move through the phases of this work.

 **Email Blasts and e-newsletters:** Regular updates on construction activities and public engagement events are sent to over 3,700 subscribers, as well as elected officials and regional/municipal partners.

 **Website and social media:** Updates to Metrolinx's project website, and geotargeted social media content to communicate details on the road closure.

 **Advertising:** Radio and geotargeted online advertising to reach wider audiences regarding the road closure.

 **Signage:** Roadside signage with detour directions will be placed at key intersections surrounding works.

 **Community Engagement:** Virtual drop-in Q+A sessions, public info session, and Construction Liaison Committee to be established.

Bowmanville Extension

Construction Notice

## Simcoe Street road closure due to bridge replacement

Beginning as early as Monday, January 12, 2026 for approximately 2 years

\*Date subject to change as a result of unforeseen circumstances or inclement weather



### Simcoe Street closure and upcoming community events



As part of the Bowmanville Extension project, we will be replacing the Simcoe Street bridge located over the Canadian Pacific Kansas City (CPKC) track. This work will require a full road closure of Simcoe Street between Avenue and Albany streets beginning as early as January 12, 2026.

This closure is necessary to ensure the safety of both the public and crews as they work on multiple associated construction activities. This road closure will be in effect for approximately two years.

We recognize this is a significant disruption and apologize for any inconvenience this may cause. We are working closely with Durham Region and the City of Oshawa to ensure traffic flow is managed effectively around the site. Throughout the closure, Metrolinx will monitor traffic conditions and adjust traffic mitigation measures as needed.

We have organized multiple community events to answer questions and we're going door-to-door to connect with nearby residents and businesses ahead of the closure. More events will be planned for Early 2026, stay tuned for more details.

Read further to view construction notices and details for each upcoming event.



1: Map depicting work area. Metrolinx image. Not to scale.

Metrolinx will extend Lakeshore East GO rail service nearly 20-kilometres east of the GO Station to Bowmanville, serving the Region of Durham. Expanded rail service in the area will provide direct connections to the larger GO Transit network, helping to reduce travel time and better connecting customers to education, family, entertainment, and jobs.

Metrolinx is currently working on construction for the Bowmanville Extension. As part of this project, the Simcoe Street Bridge located over the Canadian Pacific Kansas City (CPKC) track will be replaced. This is a full road closure of Simcoe Street between Avenue and Albany streets, either side of the CPKC track (see Figure 1), beginning as early as January 12, 2026. This closure is necessary to ensure the safety of both the public and crews as they work on multiple associated construction activities: replacement of the existing bridge structure, installation of new foundations and piling to support the new bridge, and associated roadworks and utilities.

METROLINX

GO Expansion  
@GOExpansion

GO.com

Work is starting in January to replace Oshawa's Simcoe Street bridge. This means changes are coming to how you get around the area. (1/2)





# Contact Us

## Email Us

[DurhamRegion@metrolinx.com](mailto:DurhamRegion@metrolinx.com)

## Call Us

416-202-3900

## Learn More

[www.metrolinx.com/bowmanville](http://www.metrolinx.com/bowmanville)

## Follow Us

X and Instagram: @GOExpansion





## WE'RE HERE FOR YOU!

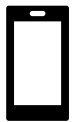
Had a question, but didn't have the opportunity to have it answered during the live event? Our Community Engagement team is happy to help answer your questions.

Please feel free to submit any additional questions about the Bowmanville Extension by contacting our team using the contact information below:



### **Email Us**

DurhamRegion@metrolinx.com



### **Call Us**

416-202-3900

Our team intends to respond to all inquiries within 10 business days.