

# UPDATE: Maintenance Hole Installation

**Expected start date:** As early as **early February 2026**

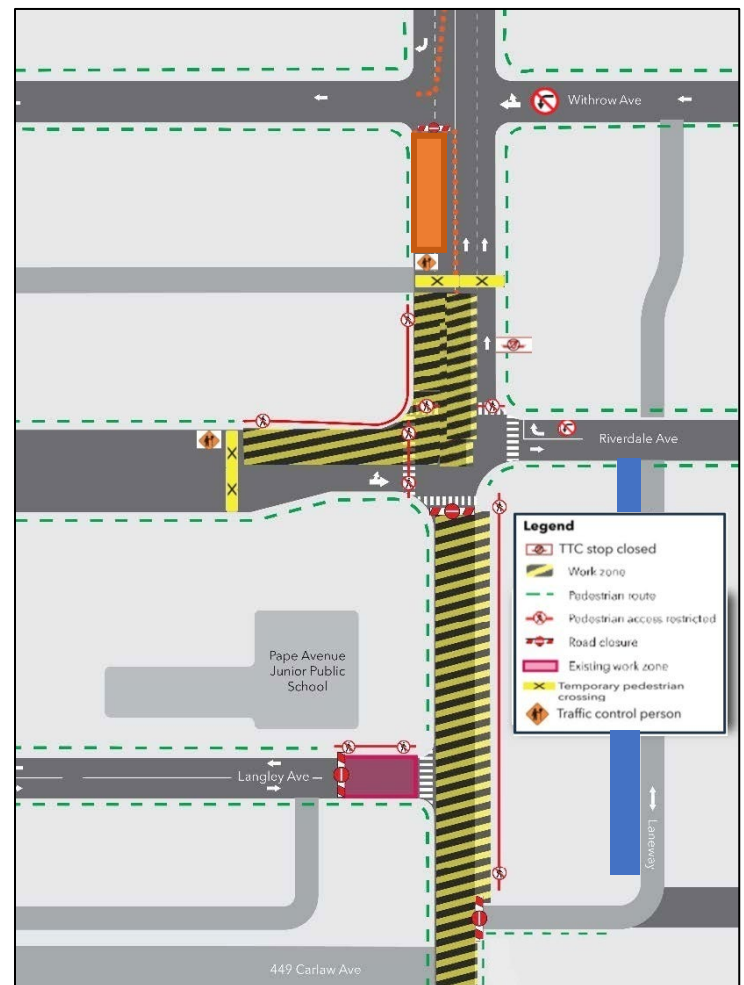
**Expected duration:** Approximately 3 months

## What is happening?

- In **early February 2026**, as part of the combined sewer relocation works, an additional work zone at the intersection of Pape Avenue and Riverdale Avenue will be implemented to install a maintenance hole.
- This will result in a partial closure of the intersection as shown in **Figure 1**.

## What to expect

- Closure of the pedestrian crosswalk at Pape Avenue north of the intersection and at Riverdale Avenue west of the intersection.
- Two pedestrian crosswalks on Pape Avenue and Riverdale Avenue will be replaced by temporary crosswalks with traffic control personnel.
- Partial closures of the sidewalks on the west side of Pape Avenue north of Riverdale Avenue and on the north side of Riverdale Avenue during working hours.
- Equipment used in this construction will include a mobile crane, backhoes, hydrovac machines and excavators. Residents should expect noise and minimal vibration during construction activities.
- Noise blankets will be installed on the construction enclosures to reduce noise impacts, and any vibratory activities will be monitored with mitigations applied, as necessary.



## Traffic, Parking and TTC Impacts

- No southbound access of Pape Avenue south of Withrow Avenue. Traffic will be able to travel eastbound on Riverdale Avenue and northbound on Pape Avenue.
- **The 72A TTC bus will continue to divert westbound along Dingwall Avenue and southbound on Carlaw Avenue.**

- Three parking spaces will be removed on the west side of Pape Avenue, just south of Withrow Avenue (indicated by the orange square in Figure 1).
- The northbound TTC bus stop will be temporarily closed throughout the duration of these works.
- Metrolinx has made available additional parking spaces for residents that have City of Toronto Street parking permits and have temporarily lost on street parking spaces in front of their homes at Lane "S Riverdale E Pape" (indicated by the blue square in Figure 1).
- Additional details are noted in the community notice on parking replacement in the area. Scan the QR code for that notice and find all community notices by visiting:  
**[www.metrolinx.com/OntarioLineConstruction](http://www.metrolinx.com/OntarioLineConstruction)**



## About the project

- 15.6-kilometre subway line that will make it faster and easier to travel within Toronto and beyond.
- 15 stops and more than 40 connections to other transit, including GO train, subway, LRT, streetcar and bus lines.
- Less than 30 minutes from one end of the line to the other.
- 28,000 fewer cars on the road each day.

### Contact us:

Call us 24/7 at: **416-202-5100**

Write to us at: **ontarioline@metrolinx.com**

Find us on Twitter, Facebook, and Instagram: **@ontarioline**

Visit the website: **www.metrolinx.com/ontarioline**

### Visit our community offices:

#### Riverside:

770 Queen St. E, Toronto, ON, M4M 1H4

General hours:

- Mondays, Tuesdays and Fridays: 9 a.m. to 5 p.m.
- Wednesdays and Thursdays: 10 a.m. to 6 p.m.

#### Thorncliffe Park:

East York Town Centre

45 Overlea Blvd., Toronto, ON M4H 1C3

Unit 153 (across from the Rogers store)

General hours:

- Monday to Friday: 9 a.m. to 5 p.m.

#### Danforth:

810 Danforth Avenue, Toronto, ON M4J 1L6

General hours:

- Monday to Friday: 9 a.m. to 5 p.m.

Disponible en français sur demande. Si vous êtes intéressé, veuillez envoyer un courriel à **ontarioline@metrolinx.com**.