

# Site preparation work for Riverside-Leslieville Station

## Start dates and durations:

- **Site Preparation:** As early as January 26, 2026  
**Hours of work:** Monday to Friday, between 7 a.m. and 7 p.m., with some weekend work on Saturdays between 7 a.m. and 5 p.m. and Sundays from 9 a.m. to 5 p.m.

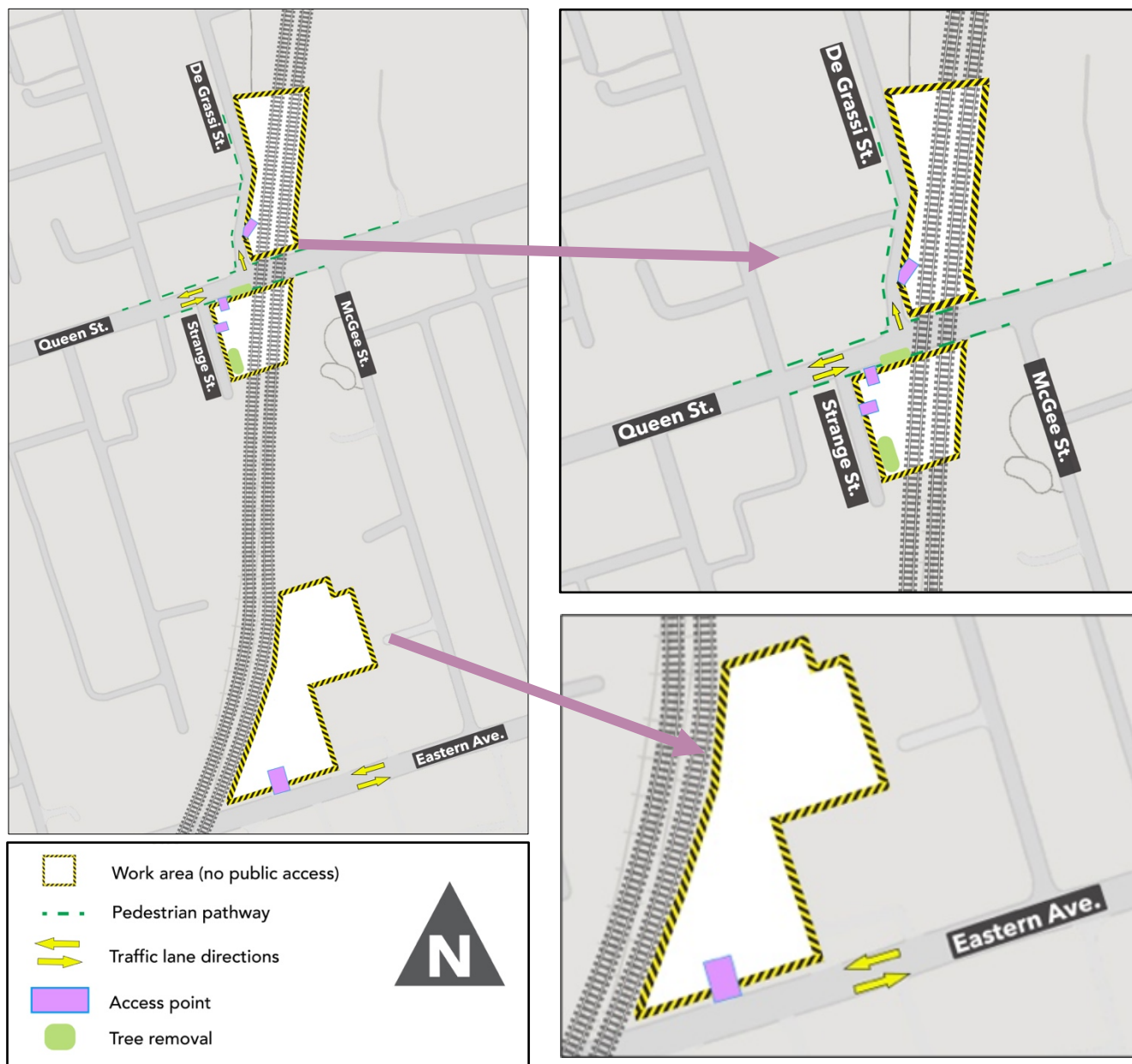
## What is happening?

- As construction advances for the new Ontario Line station, work crews will begin preparing the site by removing trees along the City right of way on Queen Street East and within the construction site near Strange Street, as well as grading and piling work.
- An access point to the worksite will be built at Queen Street East and Strange Street. Sidewalk access will still be available.
- Occasional weekend work may be required between 7 a.m. and 5 p.m. on Saturdays and 9 a.m. and 5 p.m. on Sundays.

## What to expect

- Crews will begin to mobilize equipment onsite as early as January 26, 2026. Construction activity around the site will increase gradually as preparatory work progresses.
- Crews will receive deliveries of materials and equipment such as:
  - Heavy vehicles, drilling equipment, drill pads and related machinery
  - Trucks with loads of crushed stone and gravel for drill pad set up
  - Excavator, asphalt, steamroller and other materials for grading and paving within the work site.
- Where space allows, solid noise barriers (wood hoarding) will be installed around the perimeter of the work area.
- Construction activities will include drilling, hauling soil, steel and rebar installations, and concrete pouring.
- The drill rig will dig circular holes into the ground, steel rebar cages will then be inserted into the holes using a crane before being filled with concrete to form piles.
- Construction equipment will enter and exit the work areas from the access points on De Grassi Street and Queen Street.
- Pedestrian detours may be required. Please follow wayfinding signs near work sites.
- The laydown area on Eastern Avenue and McGee Street will be used for storage materials, parking, and office trailers.
- Noise and vibration from construction equipment including vibratory rollers, drill rigs, concrete trucks, and other machinery can be expected.
- Noise and vibration monitors are in place to ensure acceptable levels are maintained.

- Construction equipment and materials will be properly secured within the work zones.
- Residents will notice construction crews, equipment, installation of safety hoarding and material deliveries near the construction areas shown on the image below.
- Work may be delayed due to weather conditions or unforeseen circumstances.



#### Contact us:

Call us 24/7 at: [416-202-5100](tel:416-202-5100)

Write to us at: [ontarioline@metrolinx.com](mailto:ontarioline@metrolinx.com)

Find us on Twitter, Facebook, and Instagram:

[@ontarioline](#)

Visit the website:

[www.metrolinx.com/ontarioline](http://www.metrolinx.com/ontarioline)

#### Visit our community offices:

**770 Queen Street East (near Queen & Broadview)**

General hours:

Mondays, Tuesdays, and Fridays: 9:00 a.m. to 5:00 p.m.

Wednesdays: 1:00 p.m. to 6:00 p.m.

Thursdays: 10:00 a.m. to 6:00 p.m.

#### Thorncliffe Park:

East York Town Centre

45 Overlea Blvd., Toronto, ON M4H 1C3

Unit 153 (across from the Rogers store)

General hours:

Monday to Friday, 9 a.m. to 5 p.m.