

Ontario Line

Exhibition Virtual Open House

April 22, 2026

 METROLINX

AERIAL VIEW LOOKING WEST OF THE EXHIBITION SITE



Agenda

Welcome (5 minutes)

- Introductions
- Land Acknowledgement

Conversation (30 minutes)

- Safety Moment
- Ontario Line Overview
- Tunnelling Construction Update
- Discussion

Q/A and Discussion (25 minutes)



LAND ACKNOWLEDGEMENT

Metrolinx acknowledges that we connect communities by building and operating transit within the traditional lands of the Anishinaabe, the Haudenosaunee and the Wendat peoples, for whom these lands continue to have great importance.

Treaties between First Nations and governments cover these lands, and the promises contained in these Treaties remain relevant to this day.

Metrolinx and its employees are committed to understanding the history of these lands and the continued impacts of colonization and take responsibility for actions to advance reconciliation.

Metrolinx will continue to seek the knowledge, expertise and experience of Indigenous partners and commits to doing business in a manner that is built on a foundation of trust, respect, and collaboration.



SAFETY MOMENT - SPRING FLOOD AWARENESS

Spring is here, bringing warmer temperatures and new opportunities for recreational activities. However, it's essential to be mindful of safety near water during this season.

- **Spring snowmelt and rain can create higher, faster-moving water** – seasonal temperature changes can cause sudden increases in water flow, making conditions unpredictable.
- **Riverbanks may be slippery and unstable from erosion** – softened ground and runoff can weaken the edges, increasing the risk of slips or collapses.
- **Stay well back from all water edges** – keep children and pets away, as fast-moving or rising water can pose hidden dangers.
- **Do not walk or drive on ice** – warming temperatures weaken ice unpredictably, increasing the chance of break-throughs.



SPEAKERS

Host



Ross Andersen

Metrolinx
Senior Advisor, Community Engagement,
Ontario Line

Main speaker



Allison Dewhirst

Ontario Transit Group,
Communications and Public Engagement Lead,
Ontario Line

Supporting speaker



Gustavo Brandao Costa

Metrolinx
TBM Manager, Capital Project Group
Ontario Line

Supporting speaker



Francois Grisel

Ontario Transit Group
Manager, TBM
Ontario Line

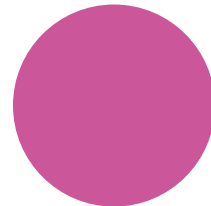
Supporting speaker



Daniel Cicero

Metrolinx
Senior Manager, Third Party Coordination
Ontario Line

Supporting speaker

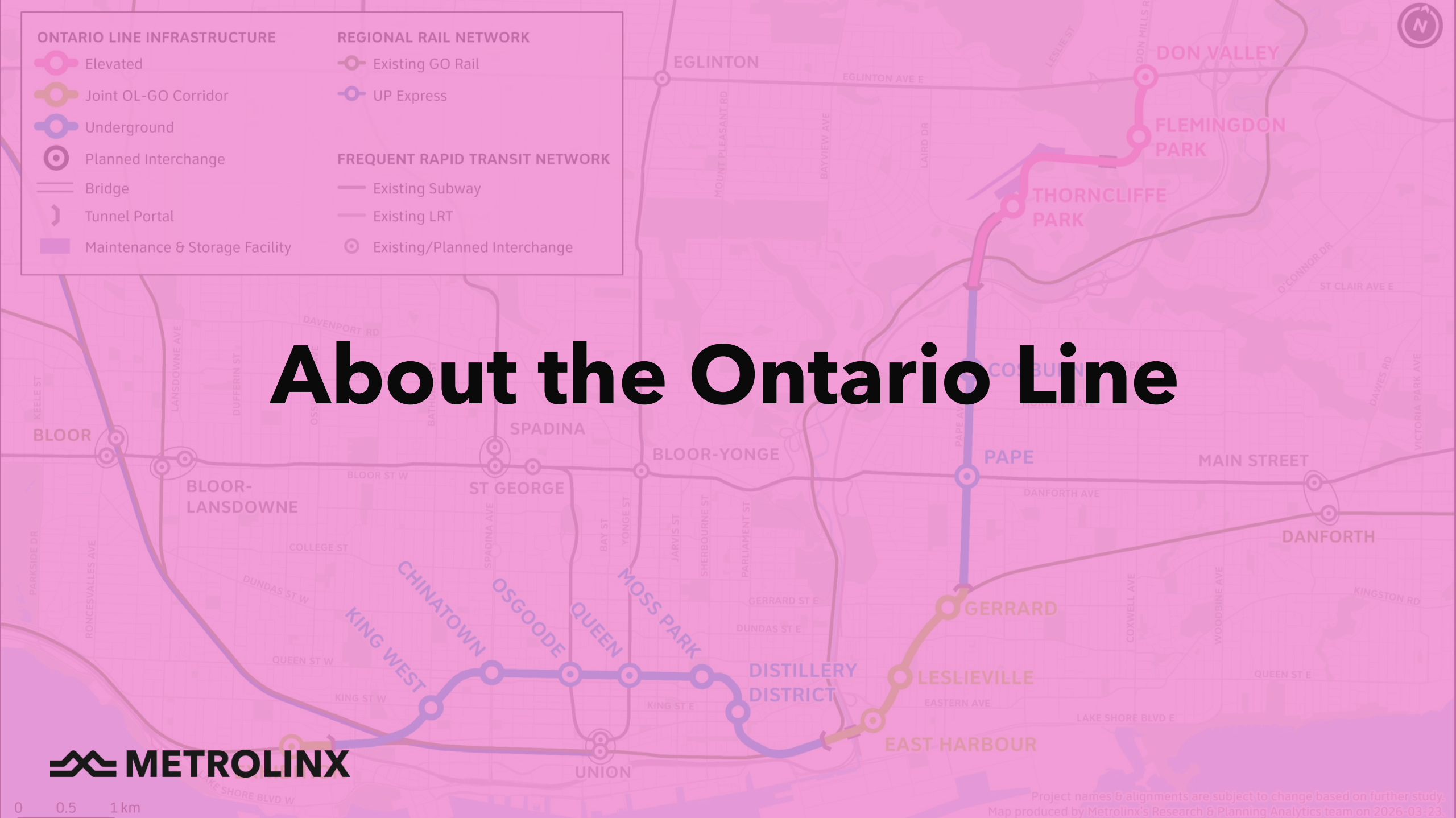


Adam Hirzalla

Metrolinx
Field Specialist
Ontario Line

About the Ontario Line

ONTARIO LINE INFRASTRUCTURE		REGIONAL RAIL NETWORK	
Elevated	Joint OL-GO Corridor	Existing GO Rail	UP Express
Underground	Planned Interchange	Existing Subway	Existing LRT
Bridge	Tunnel Portal	Existing/Planned Interchange	
Maintenance & Storage Facility			

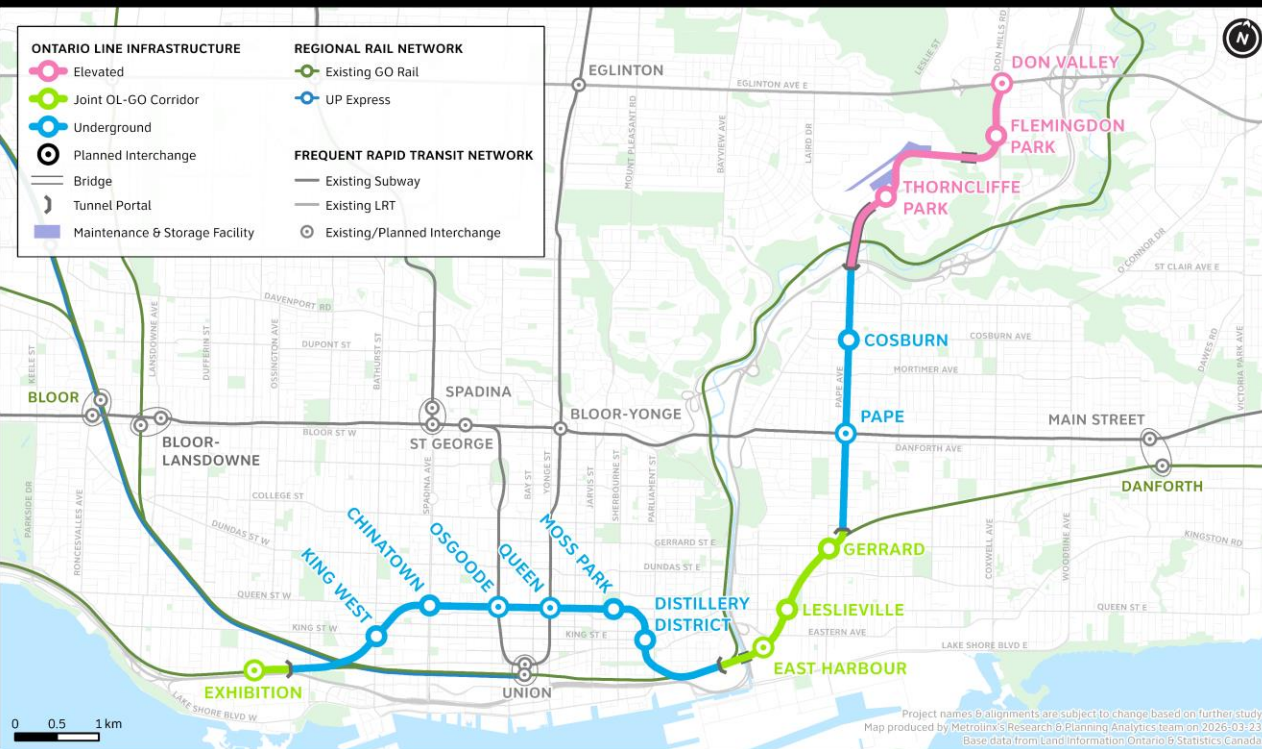


0 0.5 1 km

Project names & alignments are subject to change based on further study. Map produced by Metrolinx's Research & Planning Analytics team on 2026-03-23.

ONTARIO LINE SUBWAY

Ontario Line



15.6 kilometres long



15 stations



As frequent as every 90 seconds during rush hour



227,500 more people within walking distance to transit



388,000 daily boardings



40+ connections to other transit options



Up to 47,000 more jobs accessible in 45 minutes or less, on average



28,000 fewer car trips off the road each day

About Ontario Transit Group (OTG)

- A joint venture between **Ferrovial Construction** and **Vinci Construction Grands Projects** to design, build and deliver the **southern portion of Ontario Line Subway**.
- The province awarded the contract to OTG in November 2022.

Stations:

One above-ground station

- to be integrated with the existing GO Transit Exhibition Station

Two underground stations

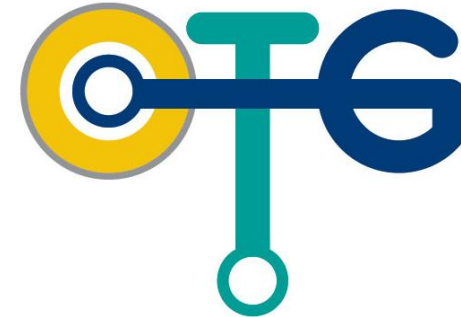
- to be integrated with the existing TTC Osgoode and Queen subway stations

Four new underground stations

- King West, Chinatown, Moss Park, Distillery District

Tunnel:

Six-kilometre tunnel and associated tunnelling works from Exhibition to Don Yard portal.

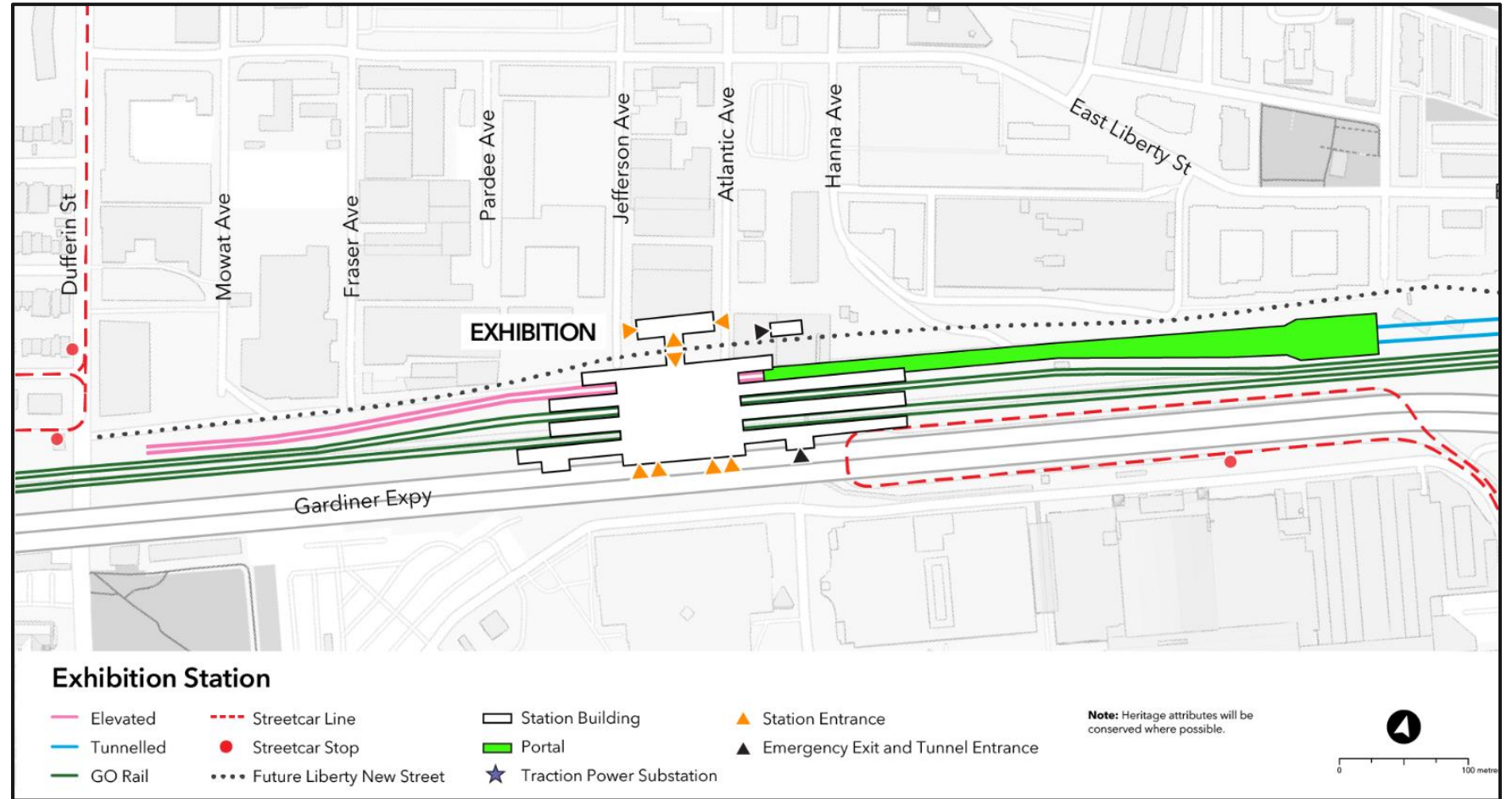


ONTARIO TRANSIT GROUP

A NEW TRANSIT HUB SERVING EXHIBITION PLACE & LIBERTY VILLAGE

The Ontario Line will create a connection to GO Transit and **bring subway service closer to many residents and businesses** in Liberty Village.

The new shared concourse between the Ontario Line and Lakeshore West GO train will **make transferring quick and seamless.**



Artists rendering of Exhibition Station looking east



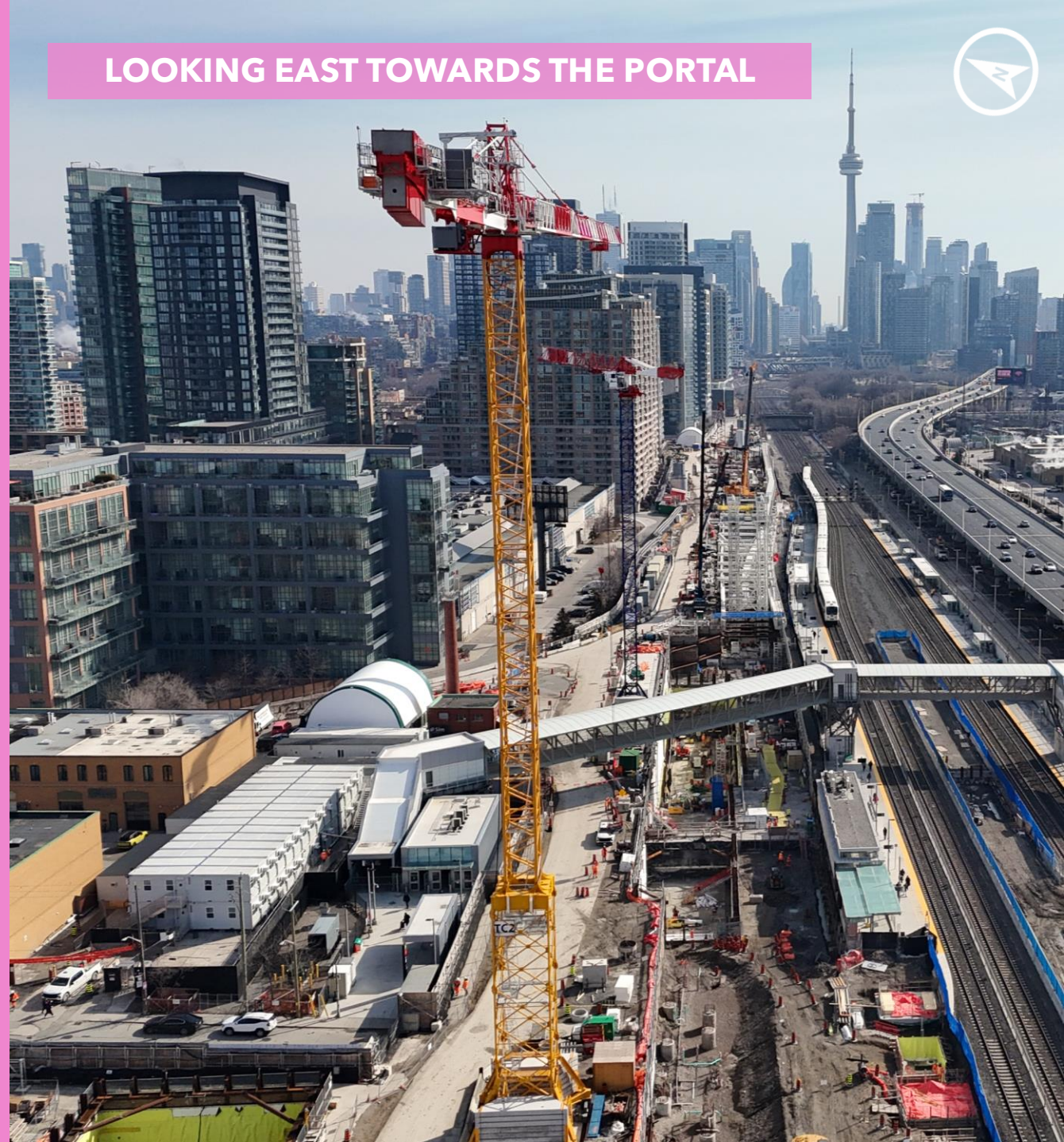
Artists rendering of North Main Entrance at Exhibition Station



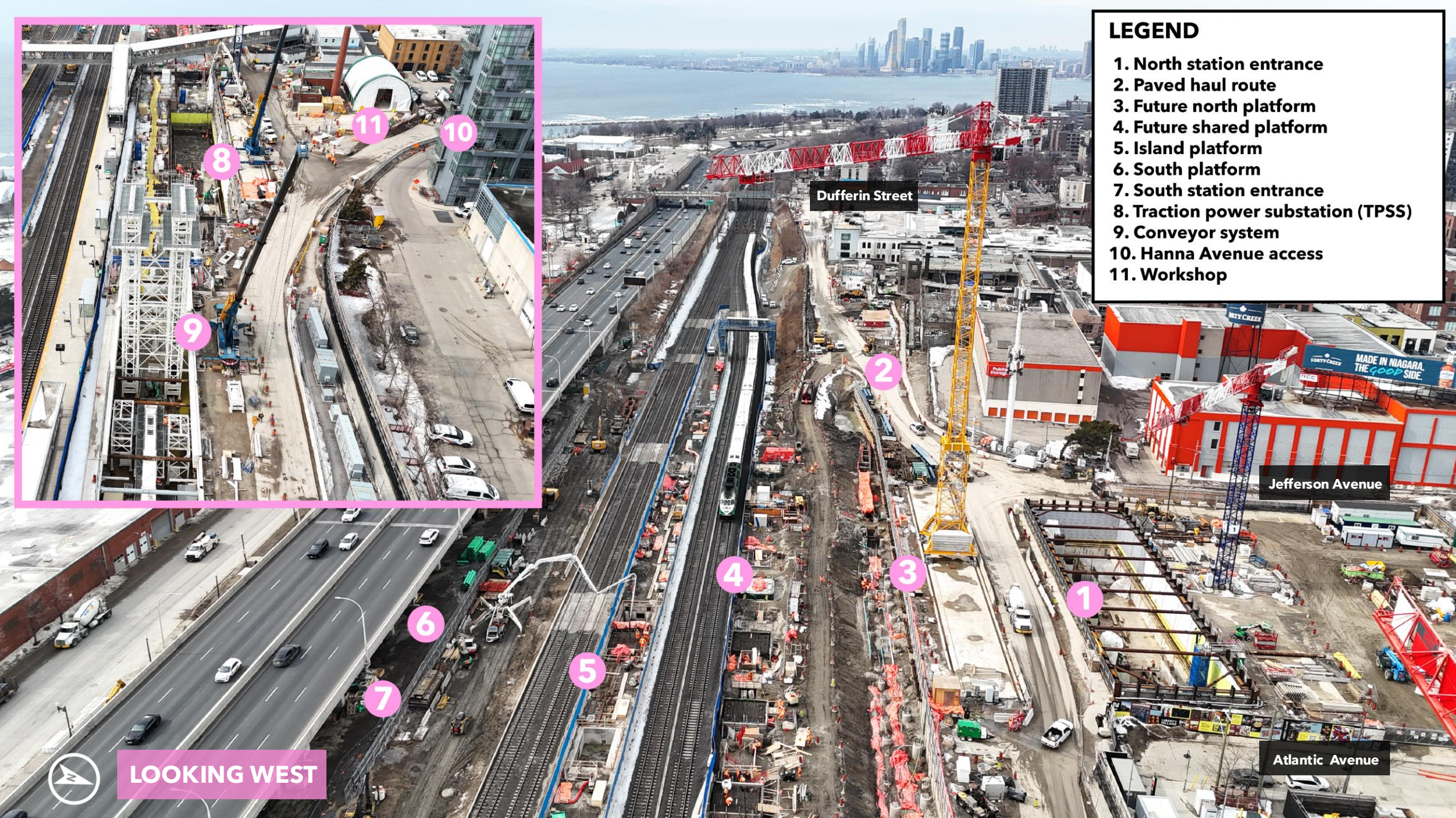
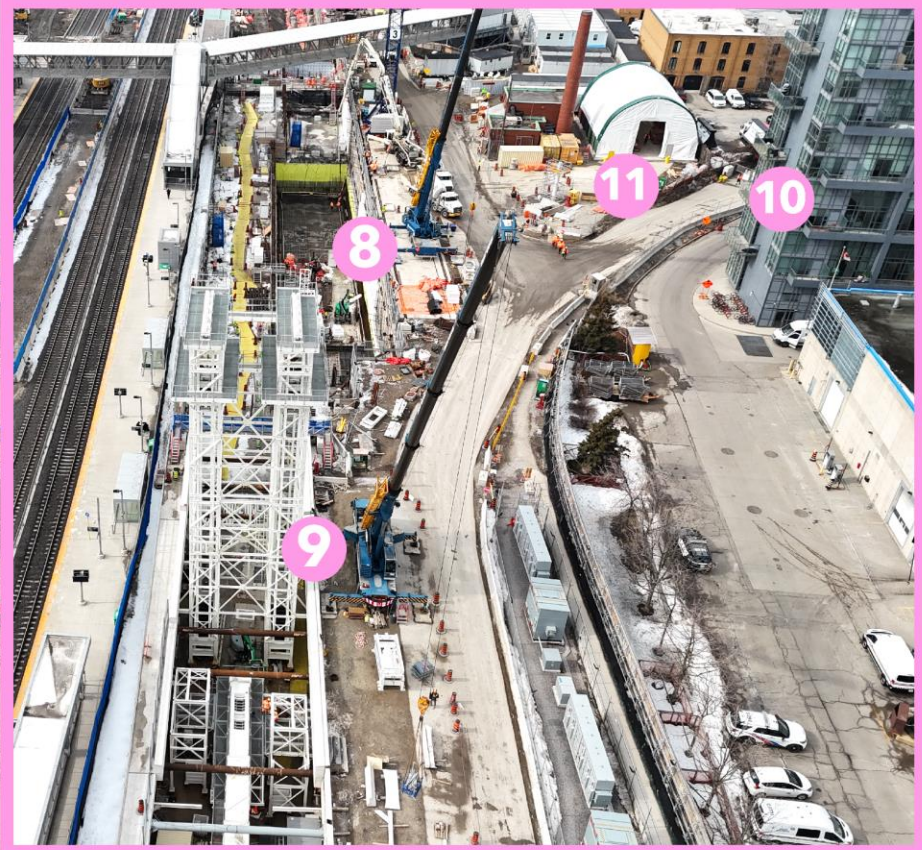
Artist's rendering – subject to change. Transit-Oriented Community proposals not shown.

Construction Update

LOOKING EAST TOWARDS THE PORTAL



- ### LEGEND
1. North station entrance
 2. Paved haul route
 3. Future north platform
 4. Future shared platform
 5. Island platform
 6. South platform
 7. South station entrance
 8. Traction power substation (TPSS)
 9. Conveyor system
 10. Hanna Avenue access
 11. Workshop



LOOKING WEST

Atlantic Avenue

Dufferin Street

Jefferson Avenue

CURRENT WORK: FUTURE EXHIBITION STATION WEST SIDE

Platforms works:

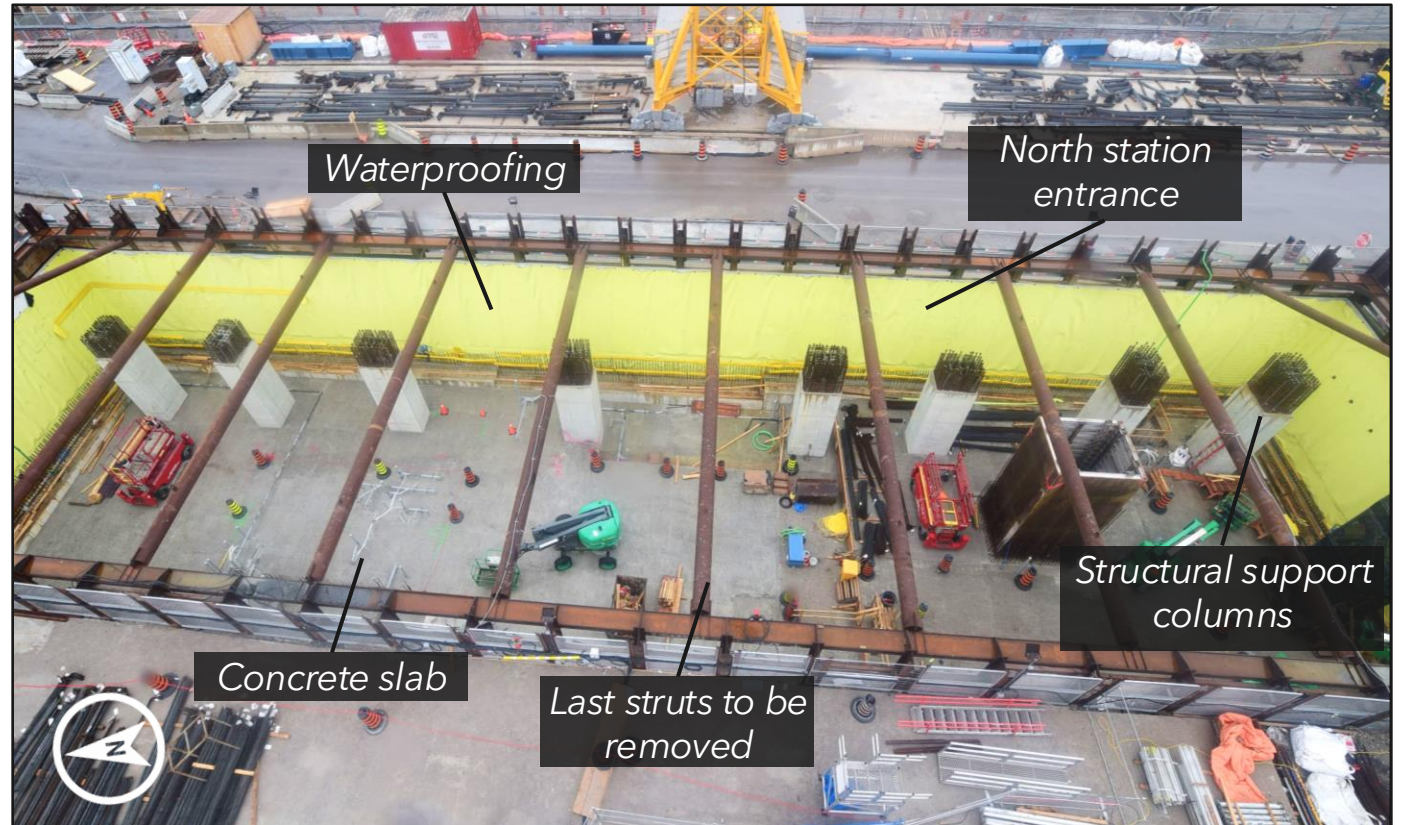
- Work is underway to build the foundations and shared passenger platforms, including excavation, rebar, waterproofing, and concrete.

North entrance & TPSS:

- Foundation and structural work is underway including rebar, waterproofing, and concrete.

What's next:

- Structural steel for the future concourse is planned to begin later this year.
- South entrance shaft excavation planned to begin later this year.



A view of the future north station entrance during permanent works.

CURRENT WORK: FUTURE EXHIBITION STATION EAST SIDE

TBM Assembly:

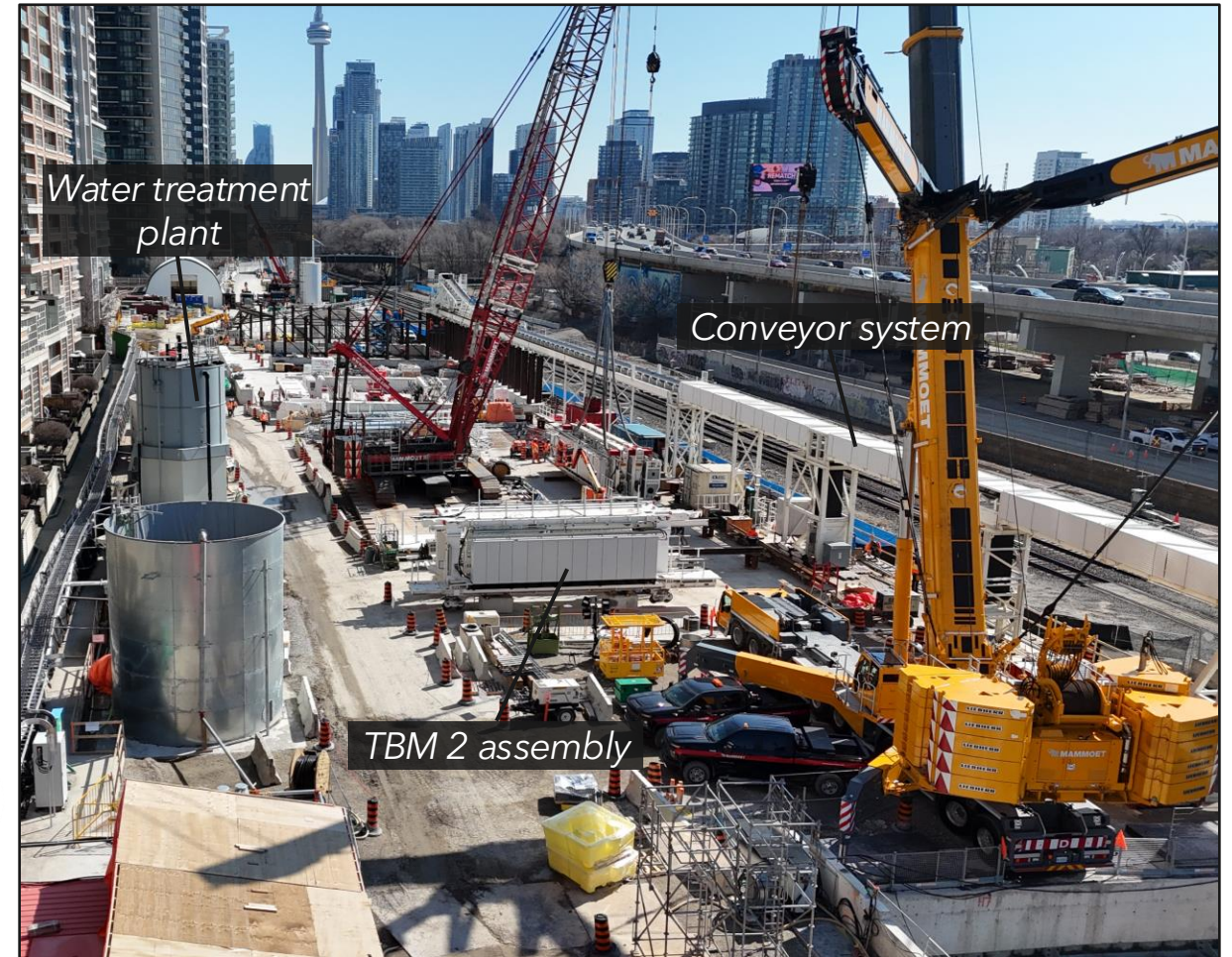
- TBM 1 *Libby* complete.
- TBM 2 *Corkie* is undergoing assembly with testing and commissioning next.

TBM Support Operations:

- Installation of temporary support structures is complete to support tunnelling activities.
- Including a water treatment plant, muck pit, conveyor system, grout plant and workshops.

What's next:

- Construction activity will increase including truck movements and continued support operations.
- Gantry crane installations to begin later this year.



A view of the TBM assembly area and tunnelling support operation structures.

TBM ASSEMBLY AT THE PORTAL

75 East Liberty Street

85 East Liberty Street

King West Laneway

Muck pit

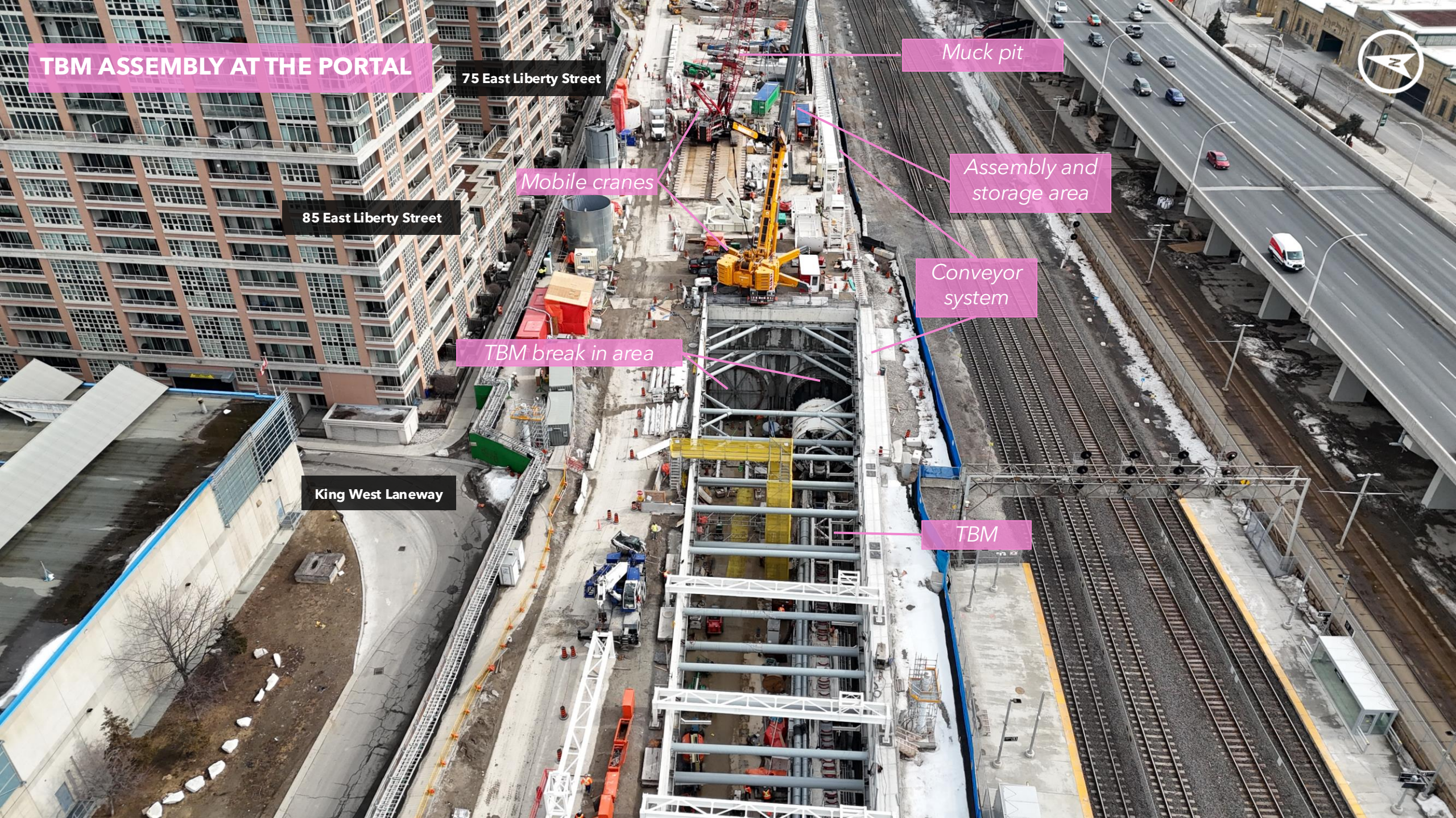
Mobile cranes

Assembly and storage area

Conveyor system

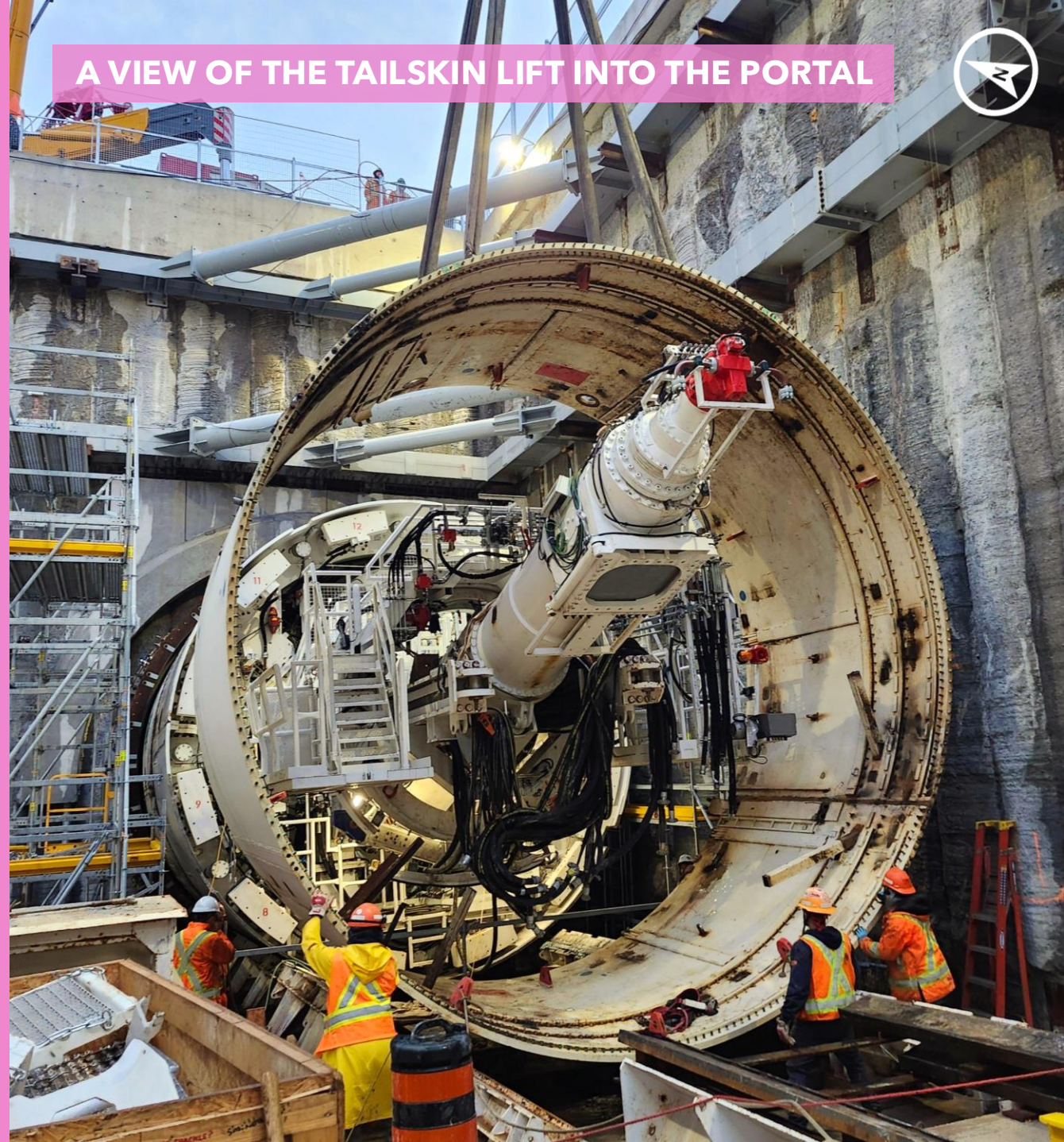
TBM break in area

TBM



Ontario Line South tunnelling

A VIEW OF THE TAILSKIN LIFT INTO THE PORTAL



ONTARIO LINE TUNNEL BORING MACHINES



HELLO
my name is

Libby



HELLO
my name is

Corkie

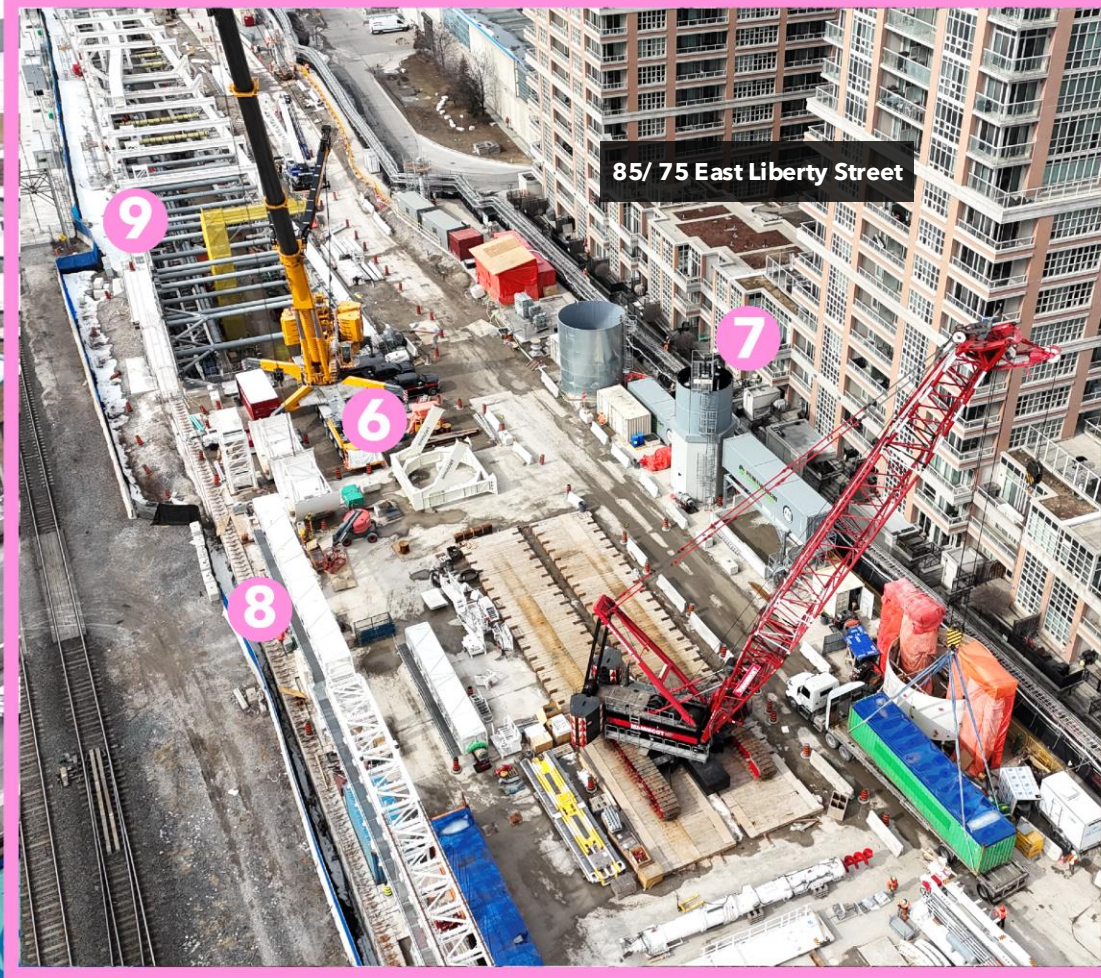
Video:

[First Ontario Line tunnel boring machine gets assembled on site at Exhibition](#)

WHAT IS A TUNNEL BORING MACHINE?

- A tunnel boring machine (TBM) cuts through soil and rock to create tunnels.
- It uses a rotating cutterhead to excavate material and a conveyor system to remove debris. As it moves, concrete tunnel segments are installed to form the tunnel lining.
- Each TBM is about 150 metres long, made up of 7 gantries, a bridge, shield and cutterhead.
- Two TBMs, named Libby and Corkie, will launch from Exhibition at the portal site and tunnel east, towards Distillery District.





85/ 75 East Liberty Street



59 East Liberty Street

55 East Liberty Street

51 East Liberty Street

- LEGEND**
- 1. Grout plant
 - 2. Workshop
 - 3. Retaining wall
 - 4. Storage area
 - 5. Muck pit
 - 6. TBM prep area
 - 7. Water treatment plant
 - 8. Conveyors
 - 9. Portal
 - 10. Paved haul route



LOOKING WEST

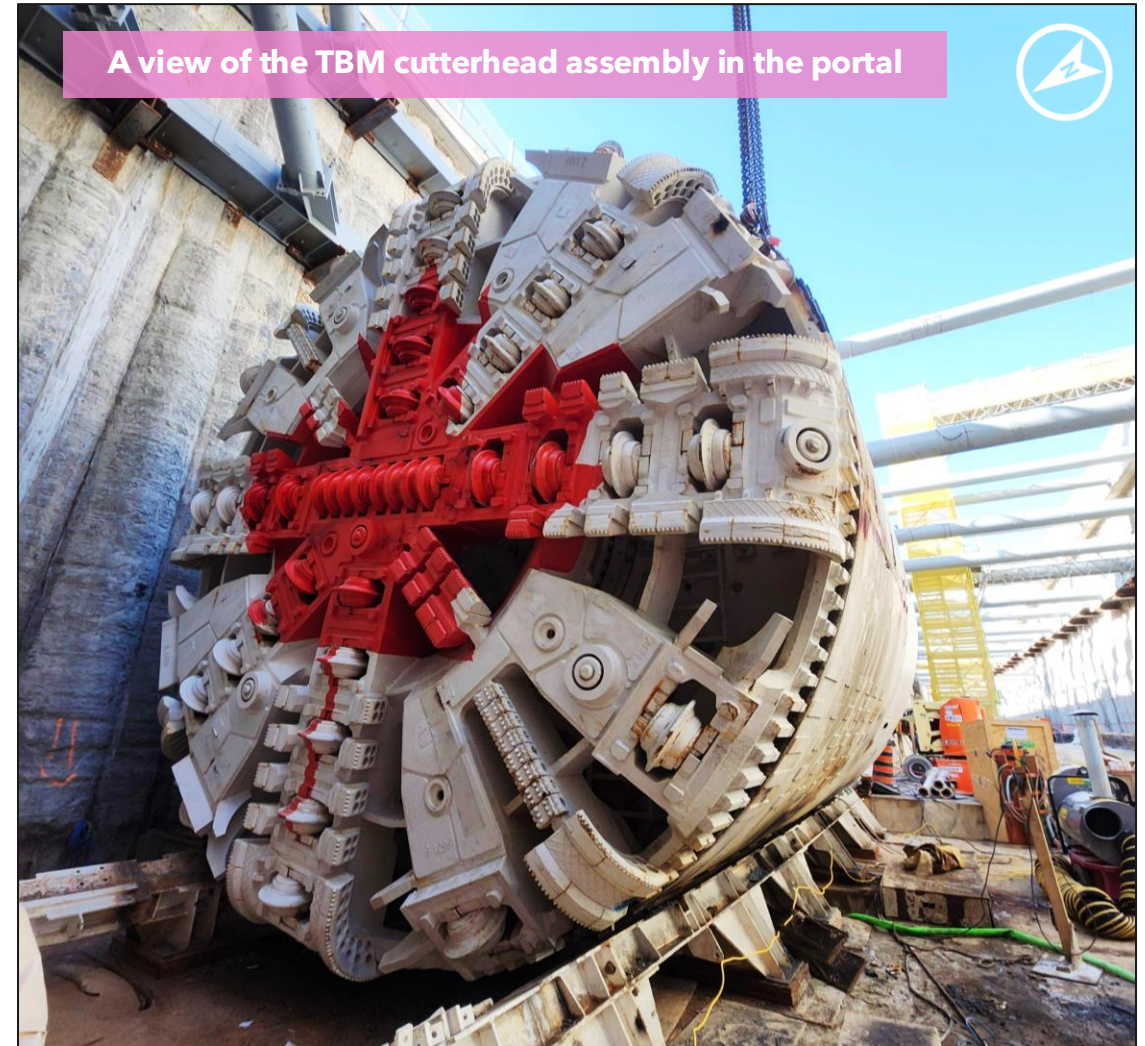
WHAT TO EXPECT: TBM AND TUNNELLING OPERATIONS

TBM assembly

- Visible crane operations lifting TBM segments (gantries, cutterheads, shields).
- Construction of new on-site structures (muck pit, conveyors, water treatment and grout plant).

Active tunnelling

- TBM activity underground may be felt or heard intermittently.
- Support structures and TBMs are expected to work 24-hours a day, up to seven days per week with maintenance on weekends (some Sundays may be required).
- Truck activity removing excavated material.



WHAT TO EXPECT: TUNNEL BORING SUPPORT OPERATIONS

Muck pit



Purpose: Temporary storage area for excavated material removed from the TBM.

What to expect:

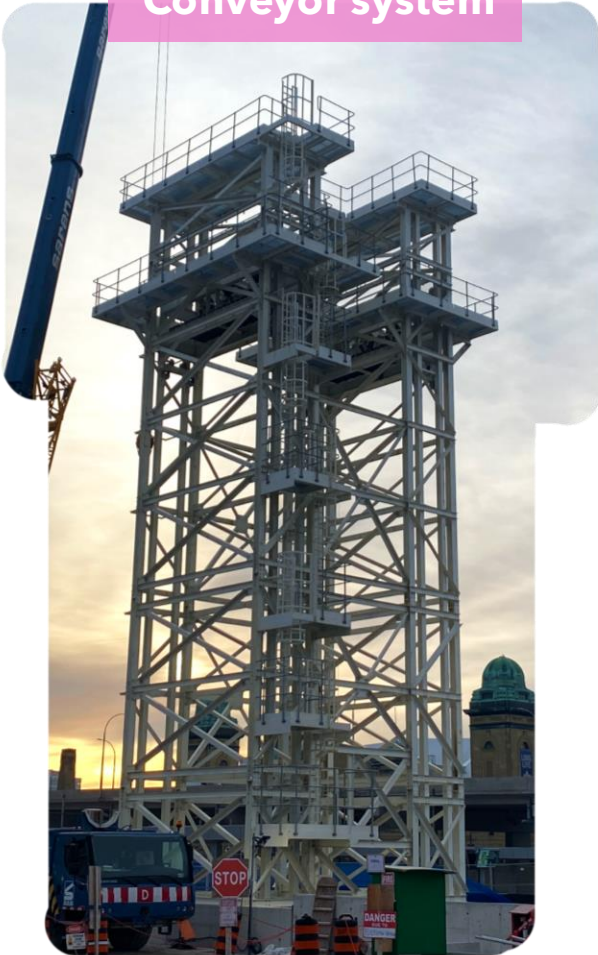
- Truck activity removing material from site
- A temporary enclosed structure visible at site

Mitigations:

- Dust suppression, keeping dust inside structure
- Defined truck routes and scheduling to manage traffic
- Internal site haul route is paved, supporting dust suppression
- Occasional street sweeping on haul route path

WHAT TO EXPECT: TUNNEL BORING SUPPORT OPERATIONS

Conveyor system



Purpose: Efficiently remove excavated materials during tunnelling directly to muck pit.

What to expect:

- Visible steel structure
- Continuous conveyor operations during active tunnelling

Mitigations:

- Enclosed or shielded conveyors where feasible

WHAT TO EXPECT: TUNNEL BORING SUPPORT OPERATIONS

Workshop



Purpose: On-site space for maintaining and repairing TBM equipment and support systems

What to expect:

- Intermittent noise from tools and equipment
- Temporary visible structure on-site

Mitigations:

- Work takes place inside enclosed structures, when feasible
- Noise blankets surrounding works when feasible

WHAT TO EXPECT: TUNNEL BORING SUPPORT OPERATIONS

Grout plant



Purpose: Produces grout used to fill gaps between the tunnel lining and diameter of cutterhead

What to expect:

- Equipment such as silos, mixers and pumps
- Daily deliveries

Mitigations:

- Equipment designed for continuous, enclosed operations

WHAT TO EXPECT: TUNNEL BORING SUPPORT OPERATIONS



Purpose: Treats water generated during tunnelling

What to expect:

- Temporary visible structure
- Audible impacts while cleaning

Mitigations:

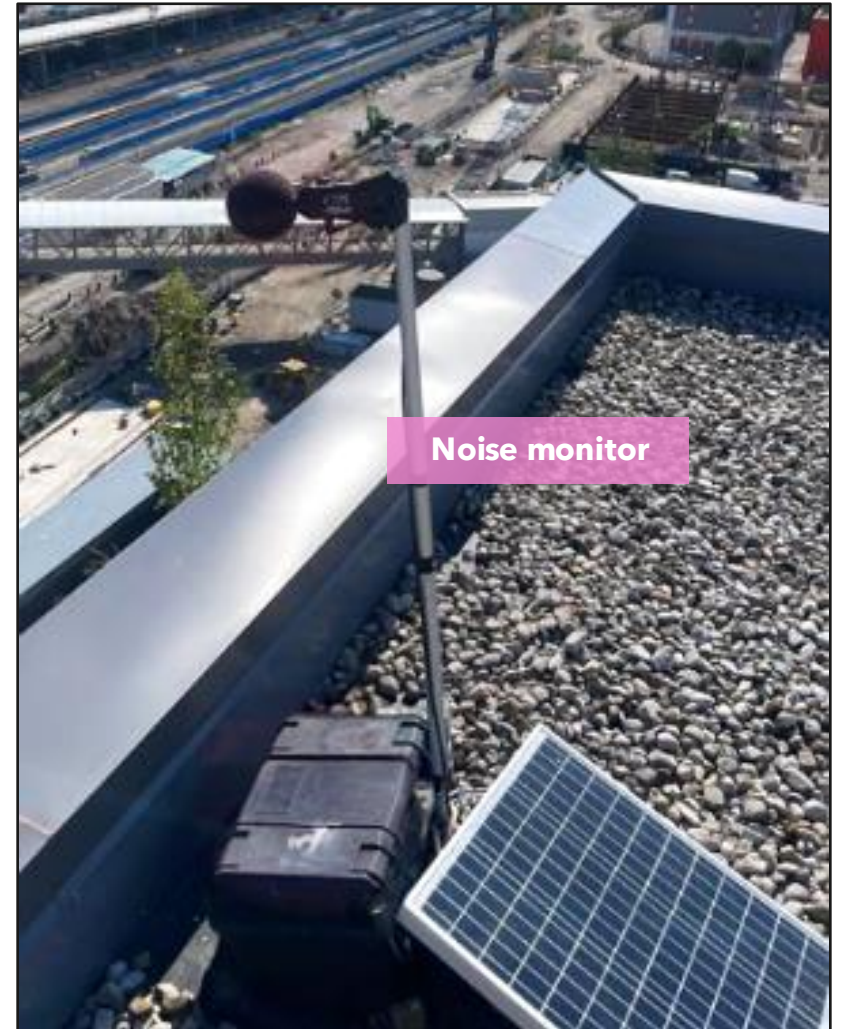
- Continuous noise monitoring
- Enclosed systems to control noise
- Designed to protect local waterways and environment

HOW WE MONITOR AND MODEL NOISE AND VIBRATION

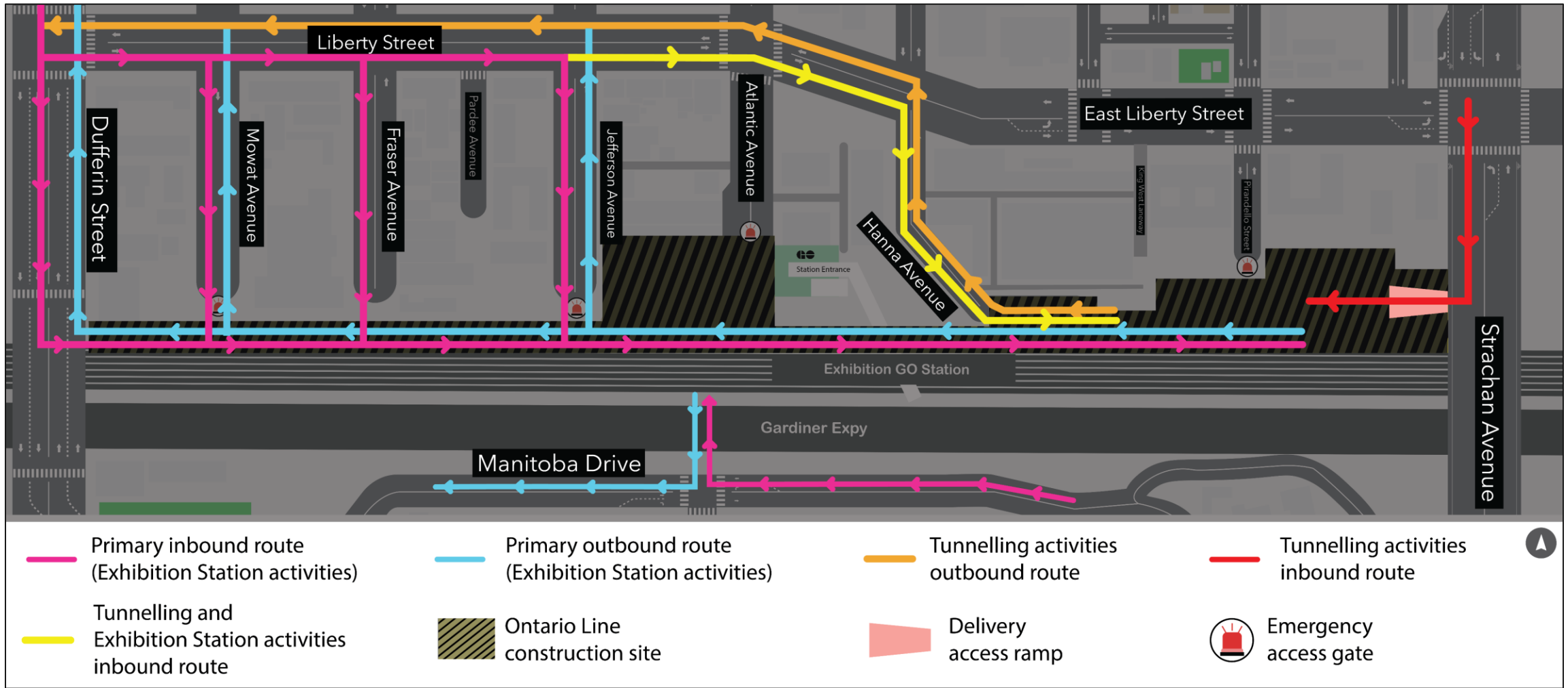
Noise and vibration are assessed and managed throughout construction using proven modelling and monitoring methods.

- **Predict impacts early** - Noise and vibration are modelled before work begins
- **Reflect real conditions** - Site layout, equipment, hours, and surroundings are considered as well as existing noise in the neighbourhood
- **Monitor during work** - Noise and vibration are tracked throughout construction
- **Respond locally** - Plans are tailored to each site

For more information on how we monitor and model impacts, visit the [Noise and Vibration Management](#) page on Metrolinx.com



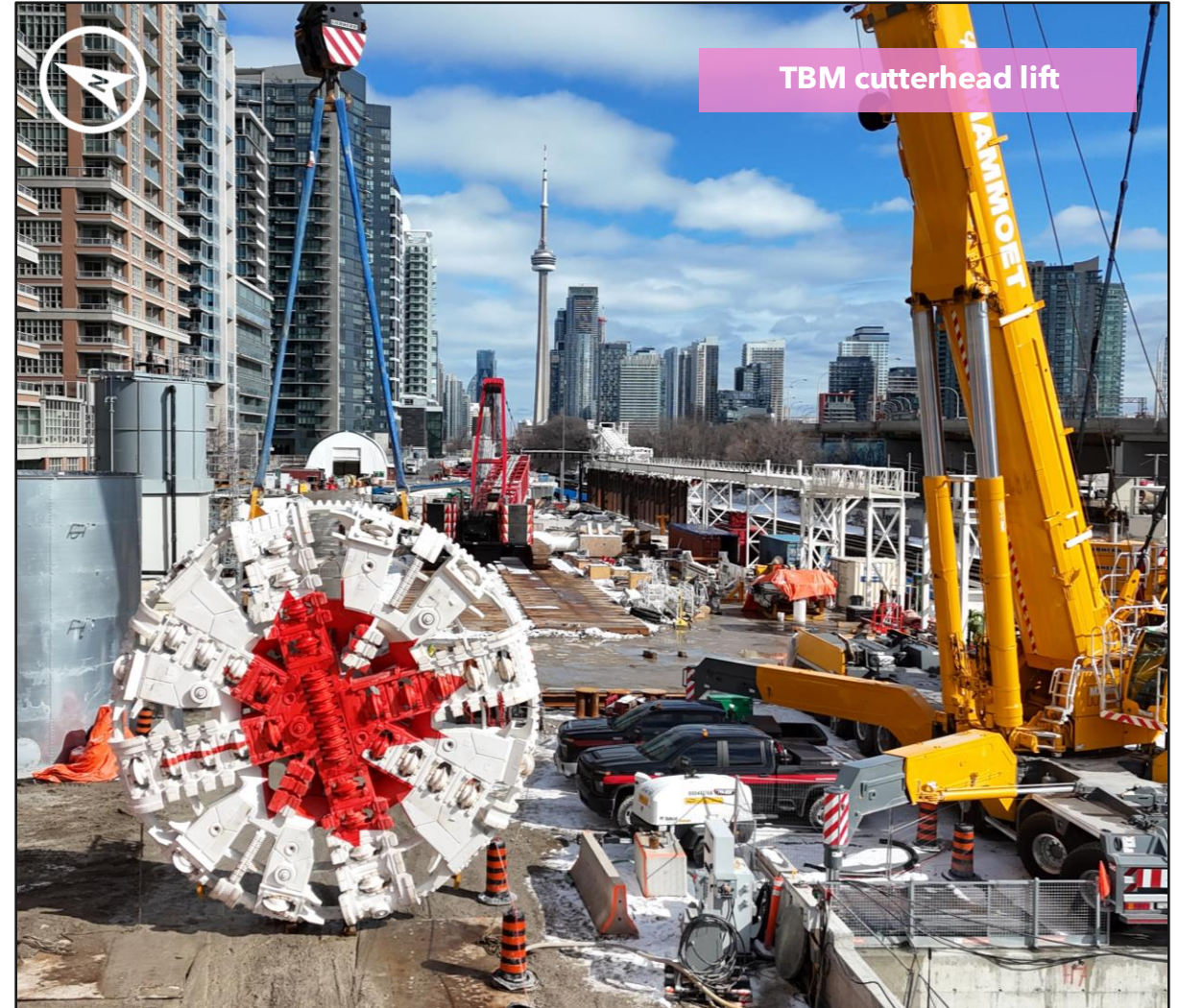
EXHIBITION STATION TRUCK ROUTE PLAN



Metrolinx additional truck routes available. Occasional oversized deliveries may occur through Hanna Avenue. If the designated gate is unavailable, trucks may use an alternate approved gate as directed. Haul routes subject to change.

5 FAST FACTS ABOUT ONTARIO LINE TUNNELLING

- 1 The first TBM is starting to tunnel.
- 2 Monitoring and modeling is in place to ensure structural safety.
- 3 The TBM and conveyors operate 24/6 with maintenance scheduled during weekends.
- 4 TBM support structures are temporary and will be in place until the end of the project (water treatment plant, workshop, grout plant etc.)
- 5 Tunnels will connect to six new underground stations in the downtown core - King West, Chinatown, Osgoode, Queen, Moss Park and Distillery District.



An aerial photograph of a major construction site for a transit line. The scene is dominated by several parallel tracks running through the center. To the left, a multi-lane highway with traffic is visible. To the right, a tall, modern building is under construction, with a large red lattice crane and other construction equipment nearby. The background shows a city skyline and a body of water. The entire image has a light purple tint.

Questions & Answers

KEEPING YOU INFORMED

Metrolinx will keep the community, residents and businesses informed by providing project updates, seeking input and feedback to address concerns or questions.

Connect with us:

OntarioLine@metrolinx.com

Telephone 24/7 @ 416-202-5100

New interactive map:

metrolinx.com/map



Why subscribe to updates?

- Advance notice of upcoming work: Receive early alerts about planned construction, including how long work will last, expected noise or vibration impacts, when overnight work is scheduled, and what measures will be put in place to help minimize impacts.
- Real-time updates: Get timely updates if plans change or if urgent issues arise, ensuring you have the most up-to-date information directly from Metrolinx.
- If you would like to receive alerts and updates, please register by visiting metrolinx.com/GetUpdates or scanning the QR code.



Construction is underway
in your neighbourhood – stay connected.

You live or work close to major transit construction. There may be times when we need to reach you quickly with important or time-sensitive information about the work happening nearby. Email or phone updates are the fastest way for us to keep you informed when it matters.



Scan the QR code or visit metrolinx.com/GetUpdates to join the list.



Des travaux de construction
sont en cours dans votre quartier; restez informé.

Vous habitez ou travaillez près de travaux de construction majeurs du transport en commun. Il peut y avoir des moments où nous devons vous joindre rapidement avec des informations urgentes concernant les travaux à proximité. Les courriels ou les mises à jour par téléphone sont le moyen le plus rapide pour nous de vous tenir informés.



Lisez le code QR ou visitez metrolinx.com/mises-a-jour pour vous inscrire à la liste.





Artist's rendering – subject to change. Transit-Oriented Community proposals not shown.