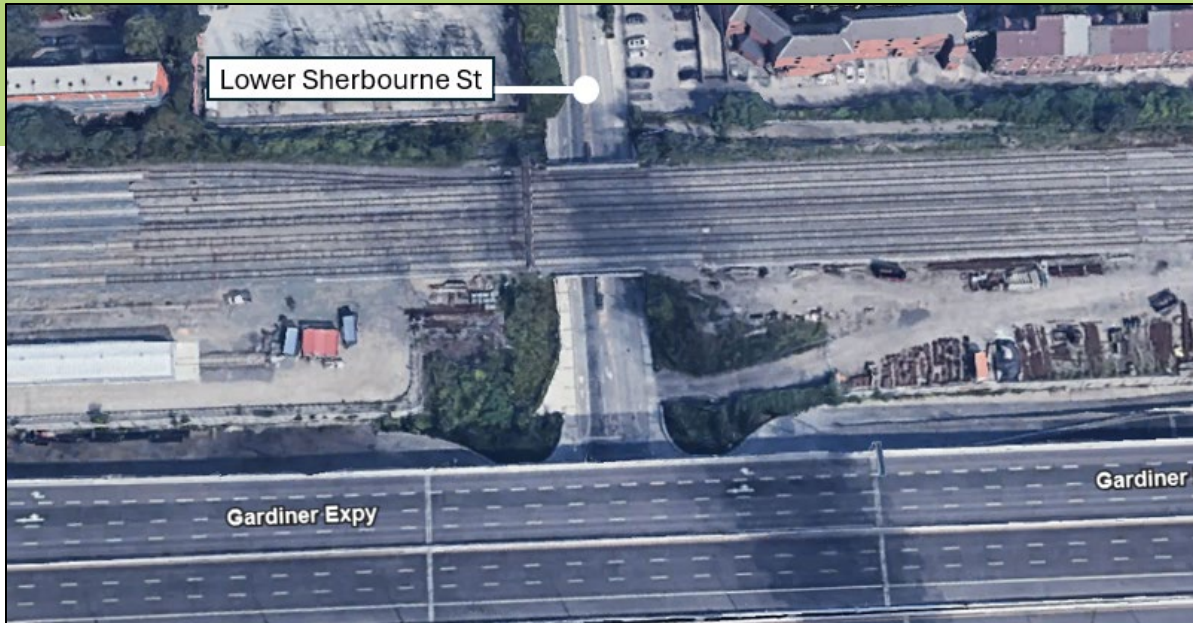


Upcoming Construction Activities and Impacts on Lower Sherbourne Street

Ongoing until Summer 2026



What is happening?

Construction activities at Union Station and within the Union Station Rail Corridor (USRC) are being completed in phases to deliver the required infrastructure needed to bring two-way, all-day rail service every 15 minutes or better along core segments of the GO network as part of the greater GO expansion mandate.

As part of the Union Station Enhancement Project, we're completing track infrastructure upgrades within the USRC to increase capacity, bringing you more frequent service as part of GO Expansion enabling works. GO Expansion will offer more service with faster trains, more stations and seamless connections to a regional rapid transit network.

We have been removing and relocating infrastructure on the south side of the Union Station Rail Corridor east of Union Station and reinforcing the corridor to support the widening of the rail bridges that pass over Lower Jarvis and Lower Sherbourne Streets. This will allow for two additional sections of track to be installed, and will provide an increased transit capacity, offer a more efficient and reliable service with faster trains, and allow for future electrification as part of the larger GO Expansion Program.

Below is a list of ongoing and upcoming sequential construction activities at Lower Sherbourne Street for your early awareness:

Secant Wall Installations:

Secant Walls consist of a series of overlapping drilled concrete piles that are reinforced with rebar. These secant pile walls were installed as a retaining wall for the rail corridor to enable foundation work for the future bridge expansion.

Tieback Installations:

Tiebacks are horizontal rods that were drilled into the secant walls to reinforce them for stability, as crews begin to excavate the area in front of the secant wall to prepare for foundation work. Tiebacks were installed with a drill rig.

Wingwall Demolitions:

Wing walls at the east and west portion of the rail bridges south of the corridor were demolished to make room for caisson foundations.

Caisson Drilling and Foundation Installations:

Caisson foundations were constructed by drilling a series of concrete piles that are reinforced with rebar. These foundations support the bridge extensions.

Bridge Fascia Demolition:

The south fascia of the existing rail bridges was demolished in preparation for the bridge expansion work. This work spans the entire length of the bridge.

Bridge Lift:

The new bridge decks were lifted into place from roadside to expand the corridor from a 6-track bridge to an 8-track bridge.

Bridge Finishing Works:

Our finishing works here include several activities including the construction of a wingwall, repaving, grading, landscaping, and cleaning up the site.

What does this mean for you?

Continuing into 2026, there will be increased construction activity at street level on Lower Jarvis Street and Lower Sherbourne Street south of the rail corridor as work crews continue bridge structural activities

Contact Us:

✉ Write to us at: torontoeast@metrolinx.com;

☎ By telephone (416) 202-3900

🐦 Find us on Twitter [@GOExpansion](https://twitter.com/GOExpansion)

🌐 Visit the website: www.metrolinx.com/projects-and-programs/go-expansion

✉ Disponible en français sur demande. Si vous êtes intéressé, veuillez envoyer un courriel à: torontoeast@metrolinx.com

in preparation of rail bridge expansions. To facilitate this needed work, there will be closures to traffic lanes, sidewalks, and bike lanes to accommodate these complex activities. Please refer to the table below for all upcoming activities and their associated impacts at Lower Sherbourne Street. As work progresses, this table will be updated with scheduling updates and an updated notice will be circulated.

Activity	Dates	Impacts
<i>Secant Wall Installations</i>	<i>Complete</i>	<i>Complete</i>
<i>Wingwall Demolitions</i>	<i>Complete</i>	<i>Complete</i>
<i>Bridge Fasia Demolition</i>	<i>Complete</i>	<i>Complete</i>
<i>Caisson Drilling and Foundation Installations</i>	<i>Complete</i>	<i>Complete</i>
<i>Abutment Installations</i>	<i>Complete</i>	<i>Complete</i>
<i>Bridge Structure Work</i>	<i>Complete</i>	<i>Complete</i>
<i>Bridge Lift</i>	<i>Complete</i>	<i>Complete</i>
<i>Bridge Finishing Works</i>	<i>Complete</i>	<i>Complete</i>
Landscaping and Finishing Works	Ongoing – Spring 2026	<ul style="list-style-type: none"> • Intermittent daily lane closures • One lane will remain open in both directions • Noise (daytime work), dust, vibration, visual impacts • Construction of retaining wall
Bridge Investigation Works	April 6 – April 30, 2026	<ul style="list-style-type: none"> • Overnight (9:00pm – 5:00am) full lane and sidewalk closures • Noise (nighttime work), dust, vibration, visual impacts
Pavement Restoration	Summer 2026	<ul style="list-style-type: none"> • Restoration of the concrete and asphalt pavement, sidewalks, curbs, and cycle track • East and West sidewalk closures • Cycle track closures • Alternating northbound and southbound lane closures

This schedule will be updated as work progresses and is subject to change due to the complexities of this work and pending permit approvals.

Contact Us:

✉ Write to us at: torontoeast@metrolinx.com;

☎ By telephone (416) 202-3900

🐦 Find us on Twitter @GOExpansion

🌐 Visit the website: www.metrolinx.com/projects-and-programs/go-expansion

✉ Disponible en français sur demande. Si vous êtes intéressé, veuillez envoyer un courriel à: torontoeast@metrolinx.com

Long-Term Benefits

The East Track Enhancements are being completed as part of the Union Station Enhancement Project and larger GO Expansion Program.

We're removing and relocating infrastructure on the south side of the Union Station Rail Corridor east of Union Station and widening the rail bridges that pass over Lower Jarvis and Lower Sherbourne Streets. The East Track Enhancements will pave the way for two additional sections of track to be installed along the southside of the Union Station Rail Corridor, to the east of Union Station which will increase capacity and allow for future electrification as part of the larger GO Expansion Program.

After the completion of the East Track Enhancements, Metrolinx will lay tracks, modernize the signaling system and electrify core segments of the GO rail network.

Questions

If you have any questions or concerns about this work, please contact us any time at TorontoEast@metrolinx.com or (416) 202-3900. For more information on GO Expansion in your community, visit our website at [Metrolinx.com/GoExpansion](https://www.metrolinx.com/GoExpansion).

Please scan the QR Code above to subscribe to our weekly e-Newsletter for updates.



We appreciate your ongoing patience and understanding of this necessary work. Dates subject to change.

Contact Us:

- ✉ Write to us at: torontoeast@metrolinx.com;
- ☎ By telephone (416) 202-3900
- 🐦 Find us on Twitter [@GOExpansion](https://twitter.com/GOExpansion)
- 🌐 Visit the website: www.metrolinx.com/projects-and-programs/go-expansion
- ✉ Disponible en français sur demande. Si vous êtes intéressé, veuillez envoyer un courriel à: torontoeast@metrolinx.com