

Hazel McCallion Line CLC Update

AGENDA

- Introductions
- Land Acknowledgement
- Safety Moment Construction Update
- Upcoming Work
- Discussion and Q&A

LAND ACKNOWLEDGEMENT

Metrolinx acknowledges that we connect communities by building and operating transit within the traditional lands of the Anishinaabe, the Haudenosaunee and the Wendat peoples, for whom these lands continue to have great importance.

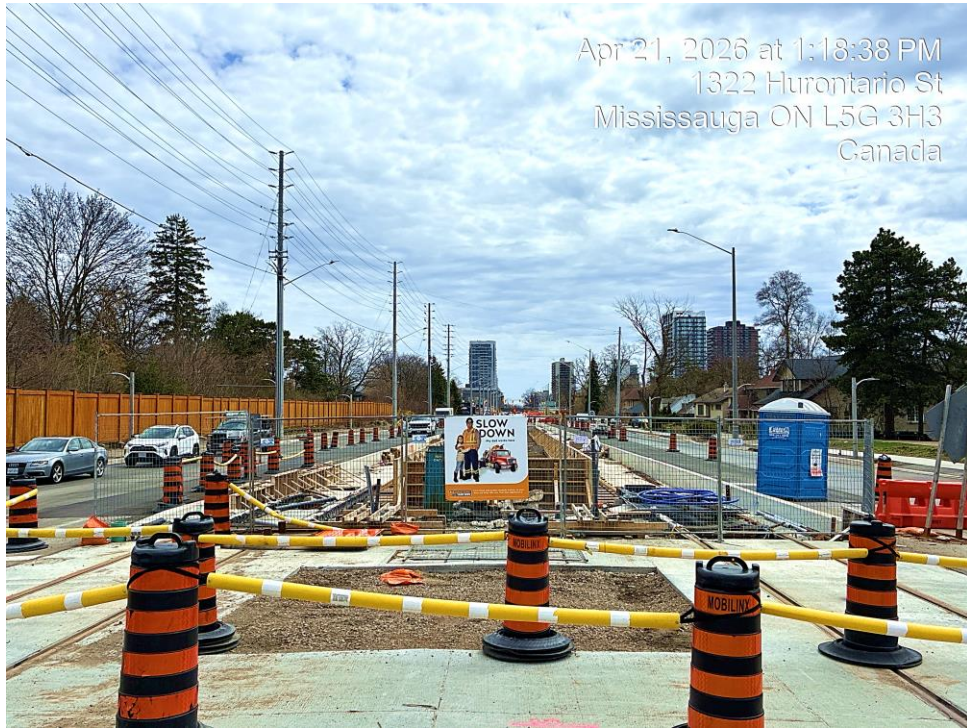
Treaties between First Nations and governments cover these lands, and the promises contained in these Treaties remain relevant to this day.

Metrolinx and its employees are committed to understanding the history of these lands and the continued impacts of colonization and take responsibility for actions to advance reconciliation.

Metrolinx will continue to seek the knowledge, expertise and experience of Indigenous partners and commits to doing business in a manner that is built on a foundation of trust, respect, and collaboration



SAFETY MOMENT



As we head into spring, just a quick safety reminder: with warmer weather, we're seeing more activity in our community kids playing outside, people biking, and more pedestrians overall. Please take an extra moment to stay alert and cautious, whether you're driving or on-site, and help keep everyone safe.

HAZEL MCCALLION LINE PROGRESS

Ongoing and completed work:

- All 13 Traction Powered Substations (TPSS) buildings installed across the corridor.
- 11 stops with platform bases completed. 6 canopy structures installed.
- New traffic light equipment started to run at the first intersection at Topflight/Hurontario.
- Storm sewer upgrades completed in key areas. Road widening and trackwork are advancing.
- Elevated guideway and Hwy 401 structure construction are nearly completed.
- Structural steel works of entrance buildings at Port Credit Station complete. Fireproofing, roofing, and curtain wall works, etc. are on-going.
- Mary Fix Creek, east & west bridges, and associated permanent fencing works complete.
- Eaglewood bridge handed over to the City.
- LRV delivery to OMSF progressing well.

Lookahead:

- TPSS energizations will be carried out.
- Futureproofing works along Rathburn Avenue and construction at the Mississauga City Centre Stop (Station Gate and Rathburn).
- First handover of watermain from Port Credit to Mineola.
- Road widening and trackwork continue to progress.
- Commencement of OMSF building system testing. (at border of Mississauga and Brampton).
- Commencement of OCS wire run at Hurontario/Topflight intersection.
- Intersection Track works - North of Mineola to Bronte College Court.

PROGRESS IN MISSISSAUGA SOUTH

Electrical poles have been successfully installed throughout the area.

The majority of electrical and telecommunications connections have now been completed.

Guideway works have commenced south of Mineola Road, marking an important milestone.

Roadworks on the west side between Eaglewood Drive and Pinetree Way have been completed.

Bronte College Court intersection track installation expected to be completed in May.

PROGRESS IN MISSISSAUGA SOUTH

Trackwork will begin north of Indian Valley Trail in the coming weeks, as well as the intersection trackwork at the Pinetree Way intersection.

Road widening will take place on the east side from south of Mineola Road to Eaglewood Boulevard.

Dry utilities crews will continue telecommunications work at the northeast corner of the QEW.

Guideway construction will proceed under the QEW interchange.

Intersections and midblock in the area will transition to Stage 4 configuration.

QUESTIONS AND ANSWERS



Port Credit Station



Mineola and Hurontario

Questions?

Ask us at **metrolinx.com**

Or contact us by phone,
email, or on social media!

Phone: **416-202-7500**

Email: **peel@metrolinx.com**

Address: 3024 Hurontario Street
unit G12, Mississauga, ON
L5B 4M4

