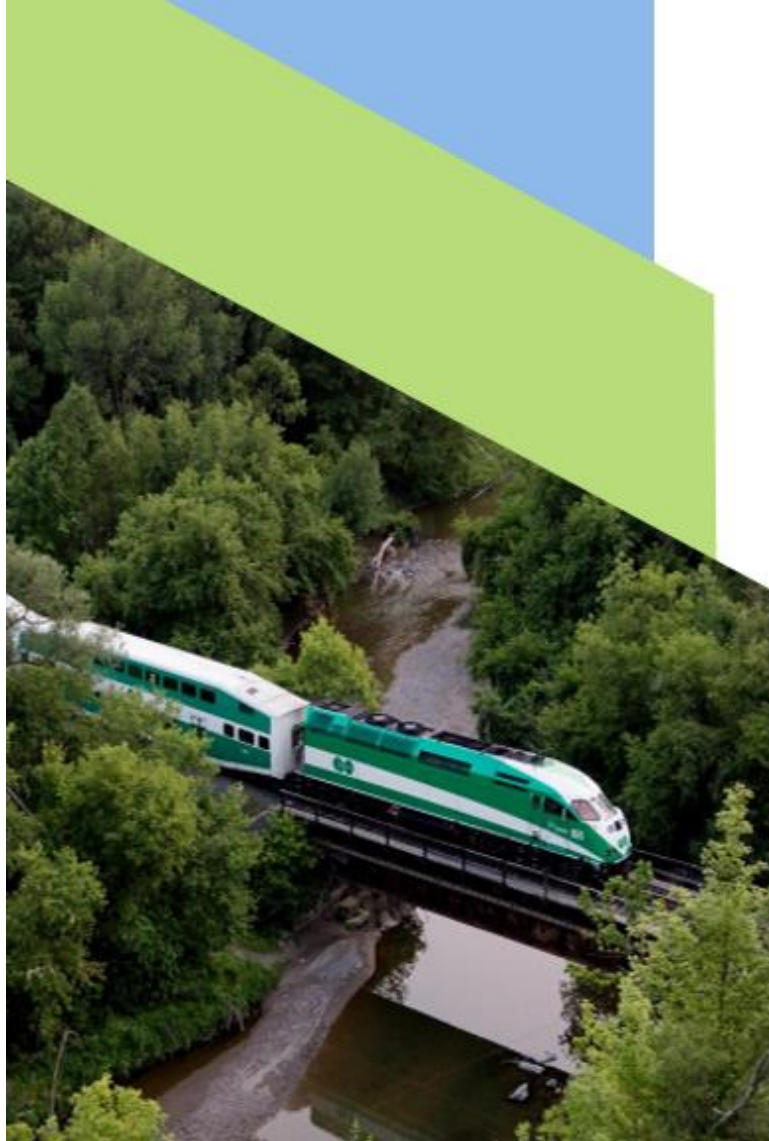


Union Station Enhancement Project

Major Landowners / Tenants Meeting

June 10, 2026





LAND ACKNOWLEDGEMENT

Metrolinx acknowledges that we connect communities by building and operating transit within the traditional lands of the Anishinaabe, the Haudenosaunee and the Wendat peoples, for whom these lands continue to have great importance.

Treaties between First Nations and governments cover these lands, and the promises contained in these Treaties remain relevant to this day.

Metrolinx and its employees are committed to understanding the history of these lands and the continued impacts of colonization and take responsibility for actions to advance reconciliation.

Metrolinx will continue to seek the knowledge, expertise and experience of Indigenous partners and commits to doing business in a manner that is built on a foundation of trust, respect, and collaboration.

ALLIANCE CHARTER UNION STATION ENHANCEMENT PROJECT



**ONTrack Alliance
commits to courageously
transform how projects
are delivered through
trust and collaboration.**

AGENDA

1 UNION STATION ENHANCEMENT PROJECT (USEP) OVERVIEW

2 CONSTRUCTION UPDATES

3 CUSTOMER UPDATES

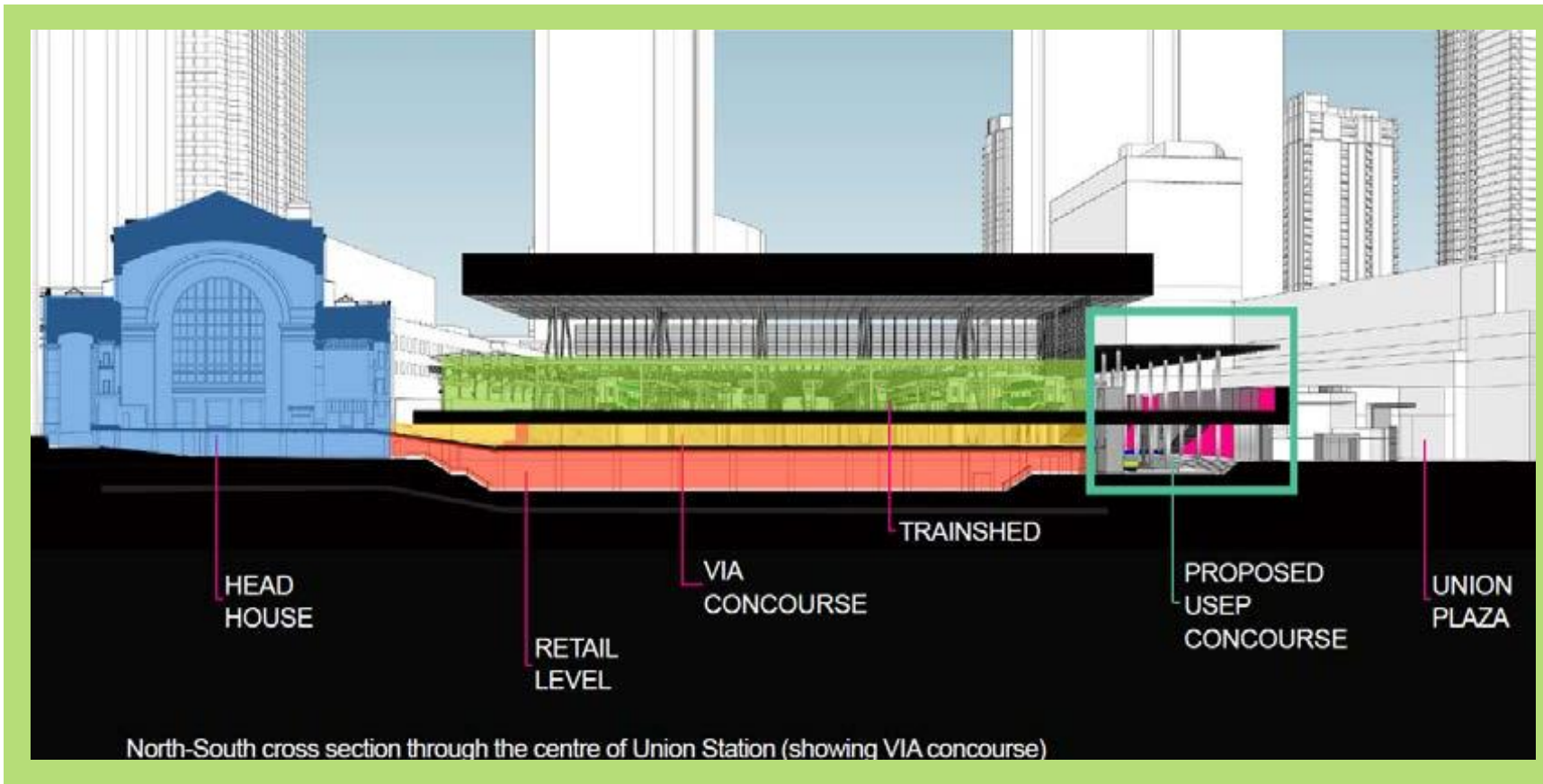
4 NEXT STEPS

Your Key OnTrack Alliance Contacts:

- Sarah Jayne Swan, Project Coordinator, Stakeholder & Communications, ONTrack Alliance, sarah-jayne.swan@wsp.com
- Josh Speedie, Communications Manager, ONTrack Alliance, Joshua.Speedie@wsp.com
- James Burchell, Advisor, Community Engagement and Issues Manager, Metrolinx james.burchell@metrolinx.com

USEP PROJECT OVERVIEW

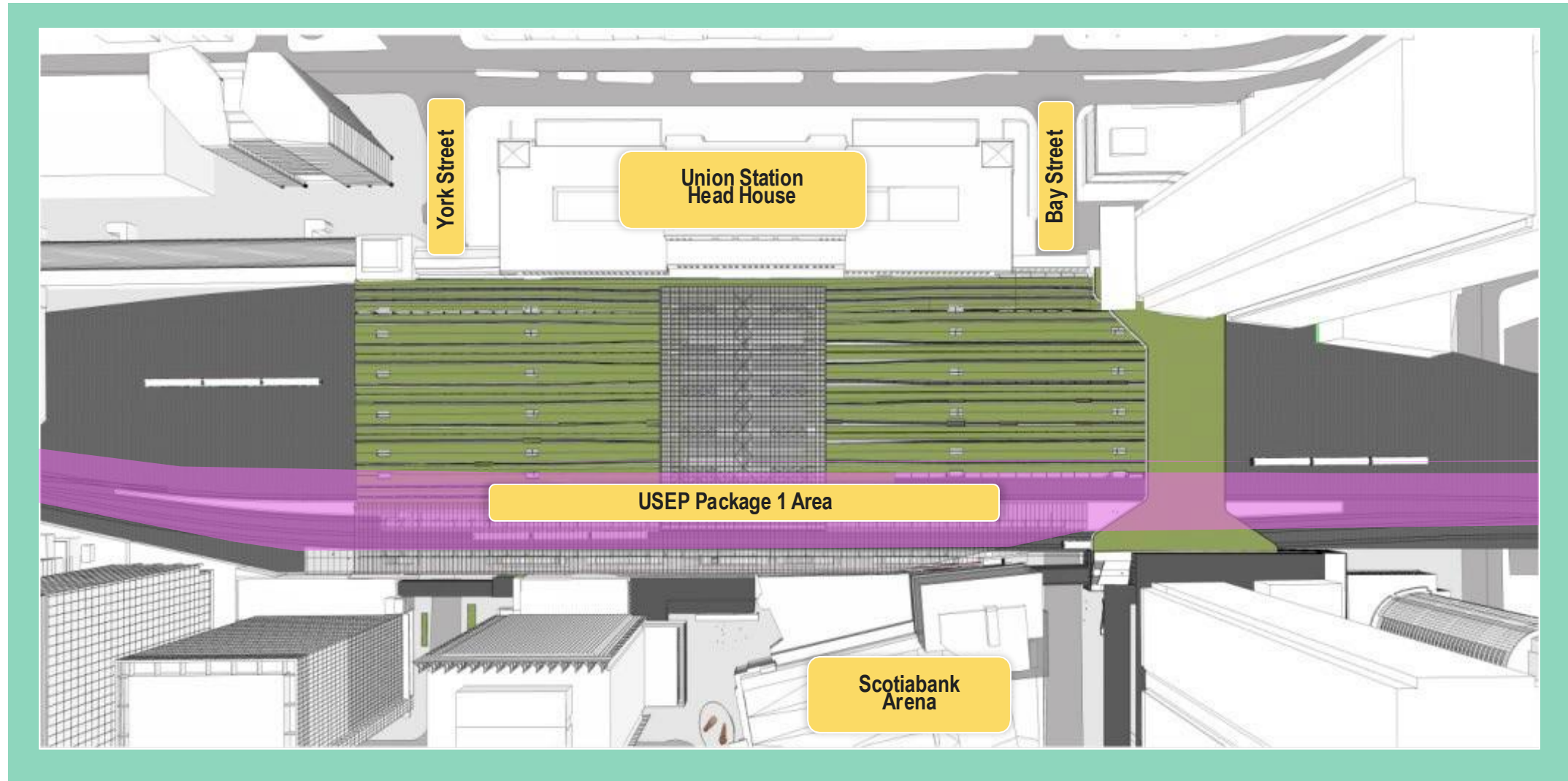
GO EXPANSION ENABLING WORKS



The Union Station Enhancement Project (USEP) is a GO Expansion Enabling Works project that is required in advance of the On-Corridor Works project in order to facilitate future track closures for the reconstruction of platforms within the existing trainshed, and to optimize the overall On-Corridor Works construction schedule.

The USEP is required in addition to the rehabilitation and upgrades already completed or near completion at Union Station.

UNION STATION ENHANCEMENT PROJECT



UNION STATION ENHANCEMENT PROJECT

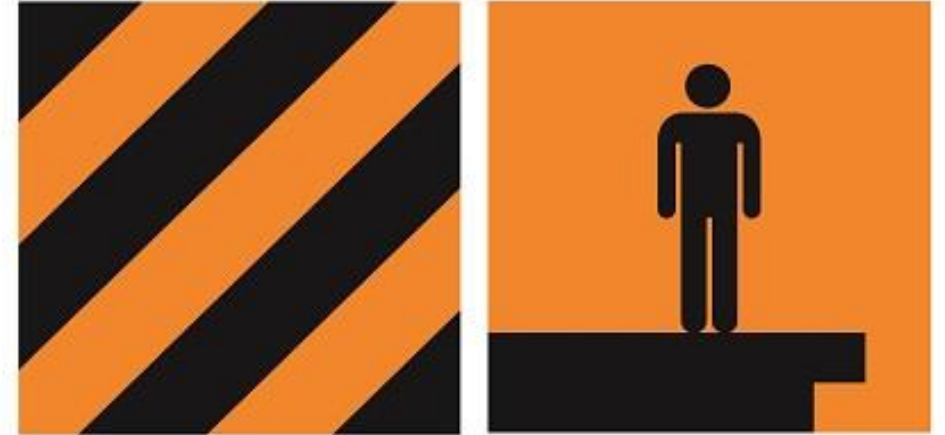


Artists's rendering subject to change. (Metrolinx image)

CONSTRUCTION UPDATES

UNION STATION ENHANCEMENT PROJECT CONSTRUCTION

- **Concourse and Track Level Activity**
 - Progress of concourse and track level updates across Areas A - J.
- **Customer Communications**
- **Next Steps**

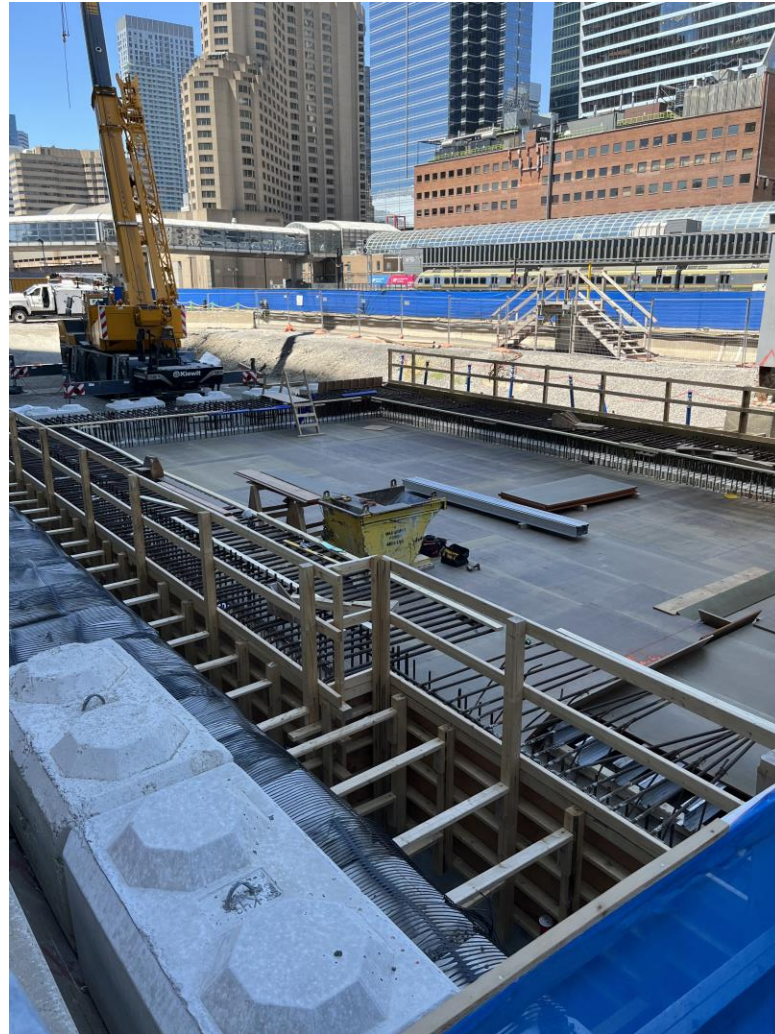
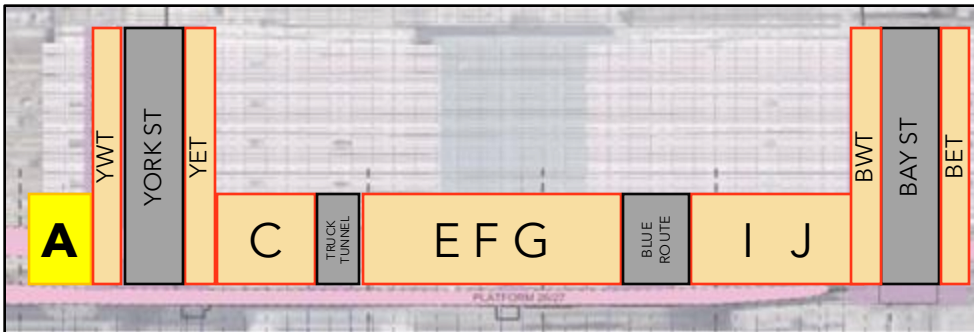


TRACK LEVEL - WEST OF YORK ST (AREA A)

Mechanical Room 4

- Mech room 4: north and south walls are formed and poured
- Prepping for track slab pour for August

Next steps: Mechanical and electrical work, track slab form work



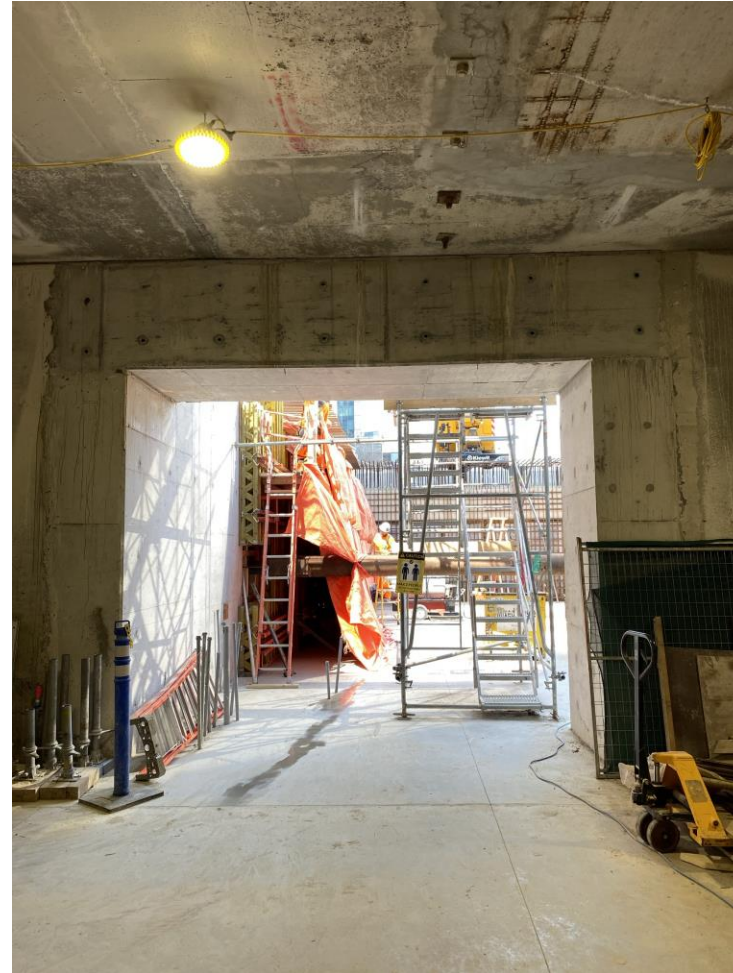
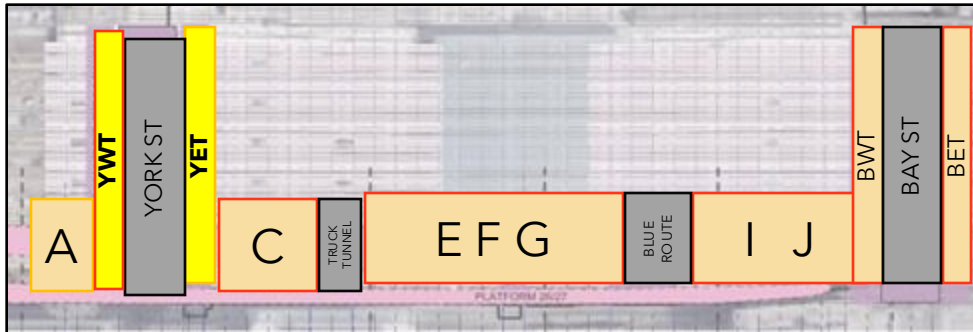
June 2026

TRACK LEVEL - YORK STREET TEAMWAYS (AREA B)

- Final slab on grade pour complete
- Stair 300 poured and striping ongoing

York West Teamway (YWT)

Enwave Scope: Anticipated Enwave work after the World Cup (August)

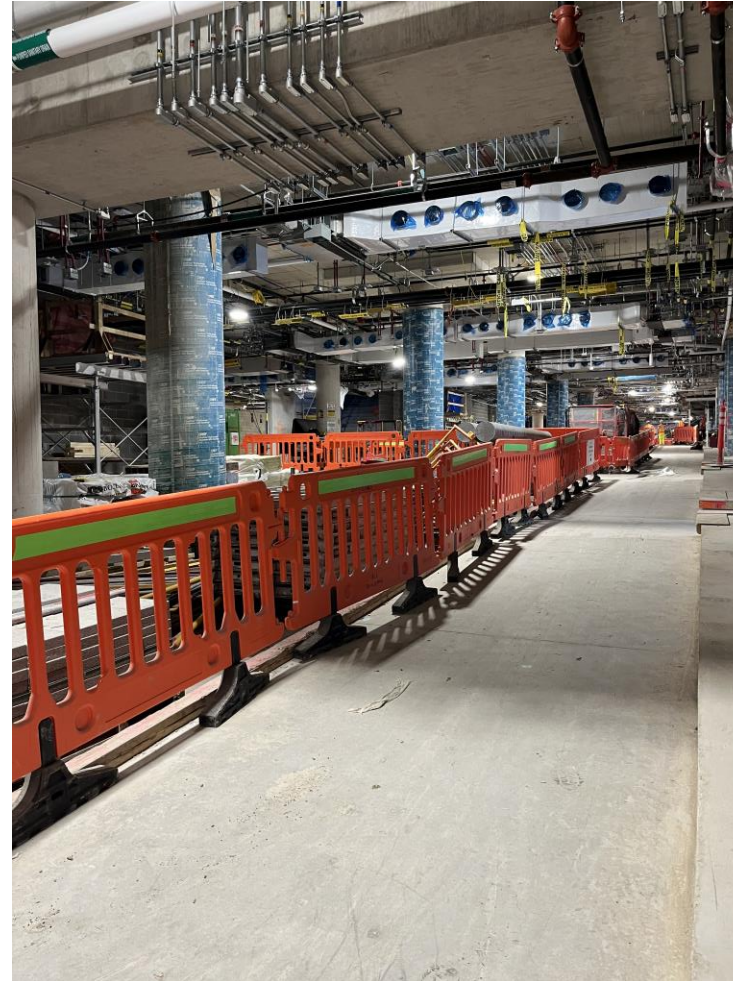


YWT Large Opening into Area A, May 2026

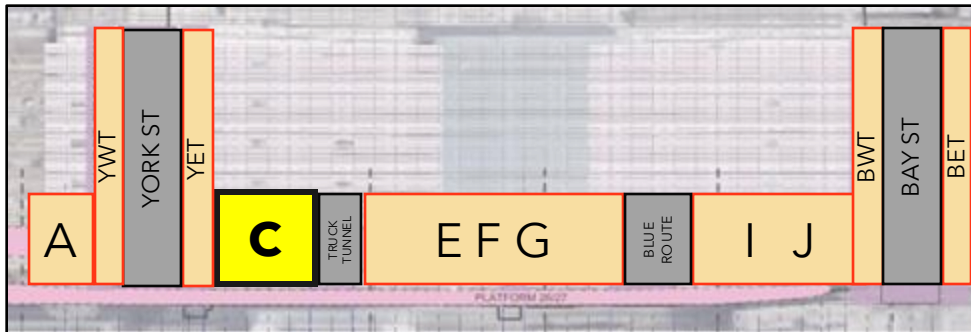
TRACK LEVEL - EAST OF YORK ST (AREA C)

- Vapour blasting of 1929 wall ongoing
- Trackslab scarifying complete
- Mech room 5, 6 wall painting ongoing

Staircase work ongoing:
306 & 307 staircases poured and stripped



June 2026



TRUCK TUNNEL (AREA D)

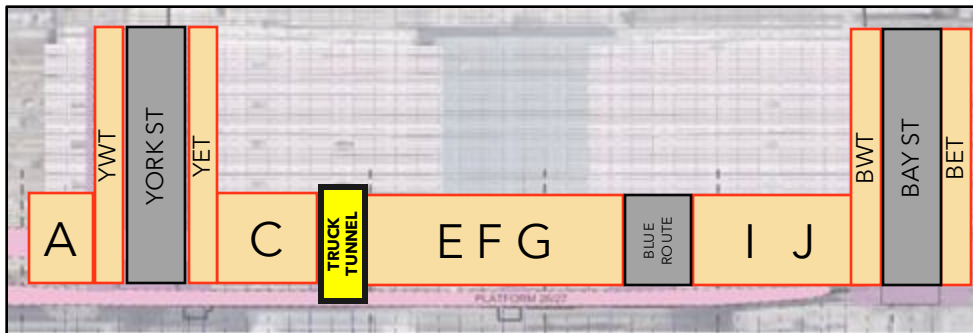
Truck Tunnel

- Truck Tunnel beam/track slab shoring & formwork
- Painting central electrical room
- Lintel beam and soffit demo ongoing

Next steps: continuing painting, track slab July 6



May 2026



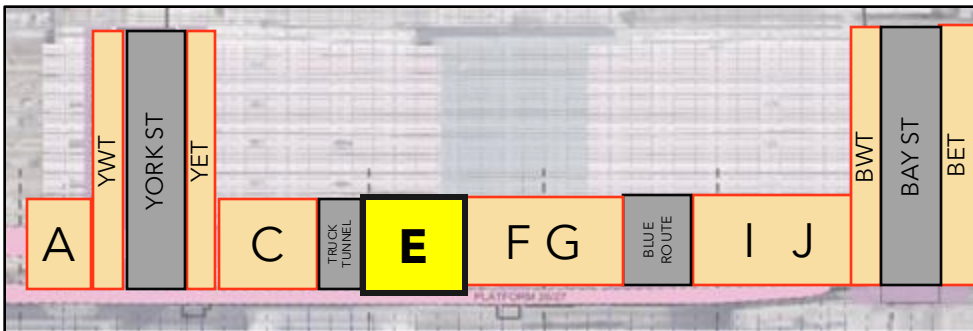
TRACK LEVEL - AREA E

- Atrium columns poured and repairs ongoing
- Mech room 2 painted

Next Steps: Continue fit-out

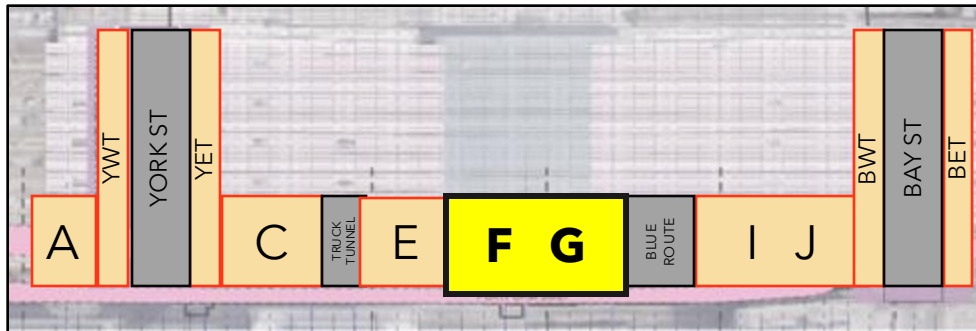


June 2026



TRACK LEVEL - AREAS F/G

- Stair 325 complete (cured & stripped)
- 1929 Wall Clean Up
- Fit-out ongoing
- Peri-up has moved into area G



Looking South East, June 2026

TRACK LEVEL - AREAS F/G



Early February 2026



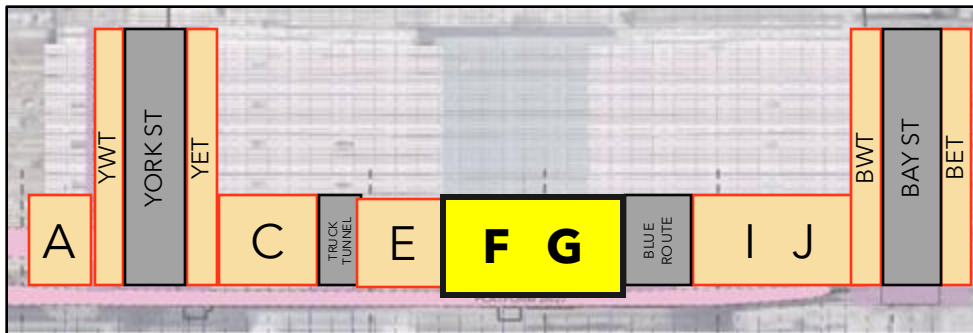
Late February 2026



April 2026



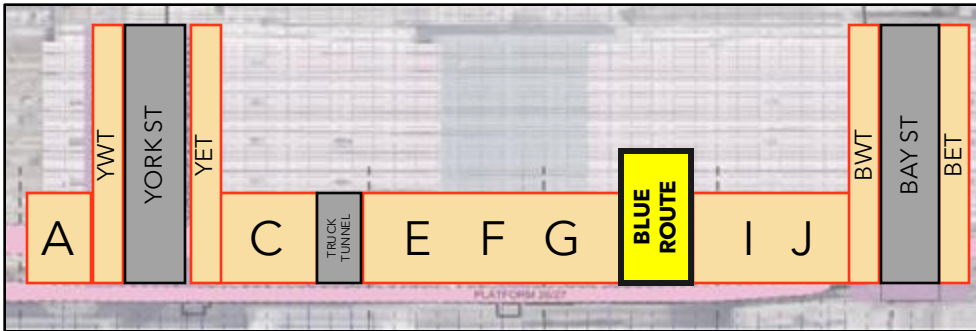
June 2026



TRACK LEVEL - AREA H 'BLUE ROUTE'

Blue Route

- Chipping complete at trackslab, investigations ongoing
- Ramp demo underway
- Ongoing coordination for electrical and mechanical relocations for door hardware
- Stool install and grouting



Blue Route openings on the West Wall (southeast facing), June 2026

BAY ARCADE - BLUE ROUTE

Purpose: To build a new temporary ramp due to closure of Telus Ramp.

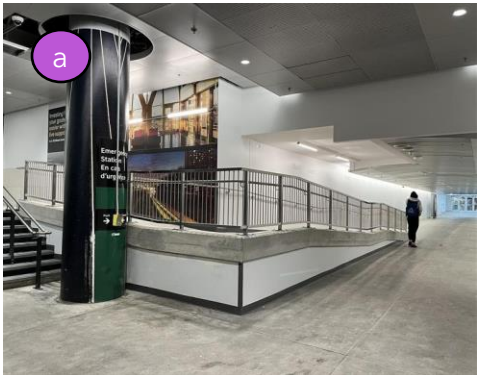
Updates

Auxiliary ramp opened to public on February 5th (see a)

Construction of hoarding complete (see b)

Closure of old Blue Route ramp (see c)

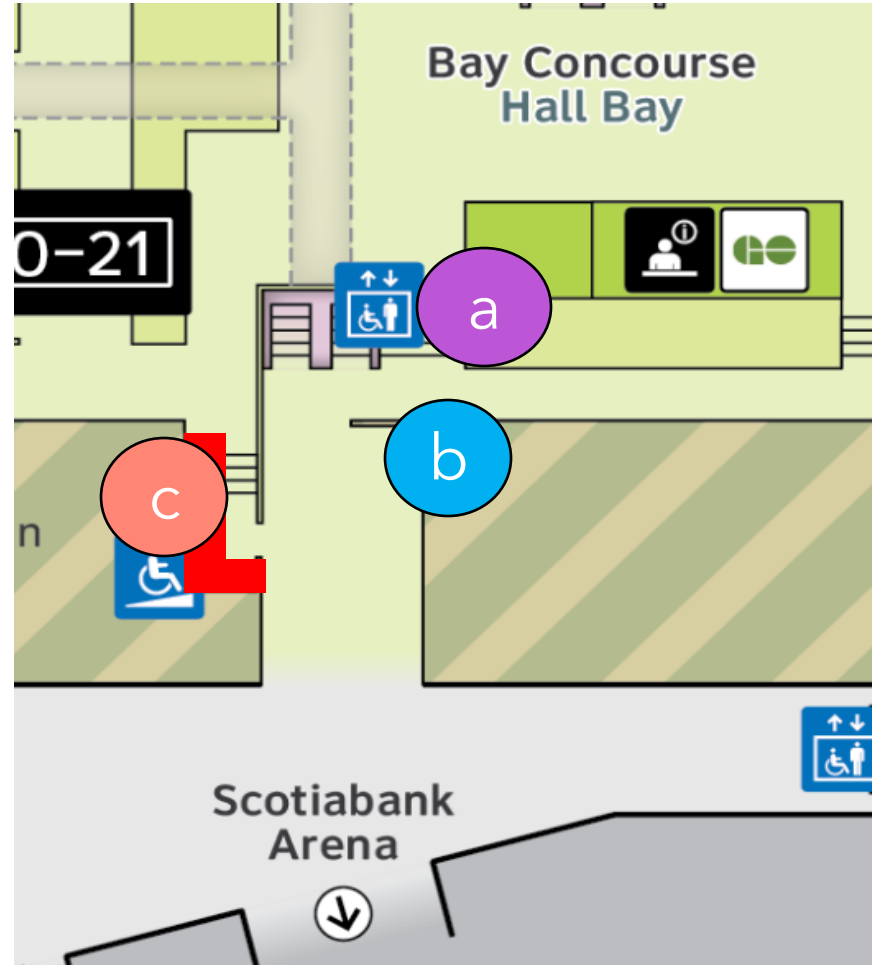
1929 wall openings (TBD).



February 2026



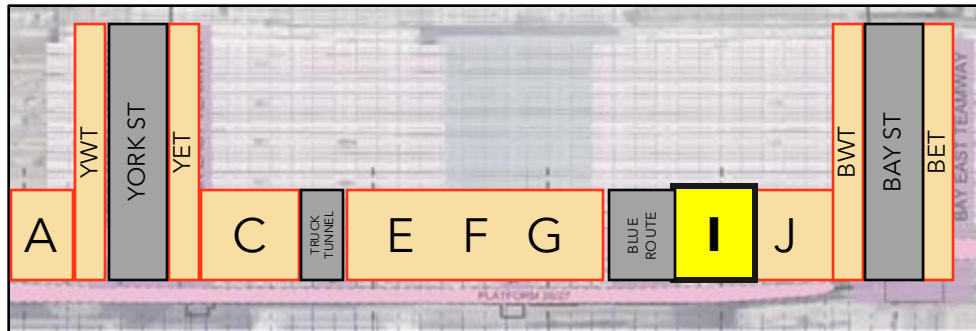
View from Bay Arcade
(Facing South)



TRACK LEVEL - AREA I

- Suspending slab 2 curing and bulkheads stripped
- Backfilling, grade and pack along north wall
- Repairs on 1929 wall
- Pre-cast cistern installation

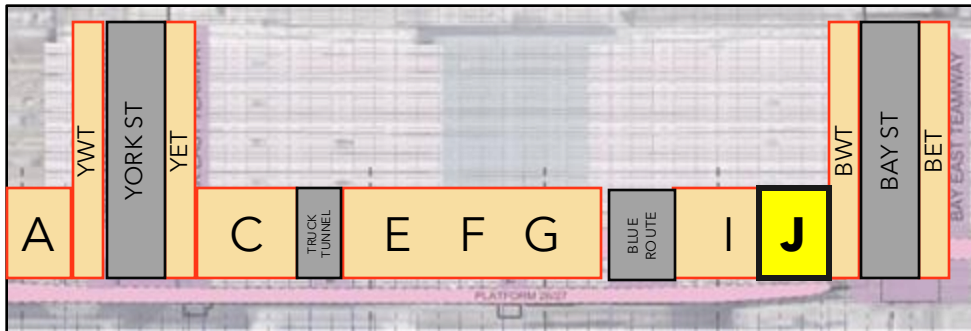
Next Steps: Clear stone and then prep for rebar for the slab on grade scheduled mid-June



Area I, June 2026

TRACK LEVEL - AREA J

- South abutment beam and columns installation



Area J, June 2026

CUSTOMER UPDATES

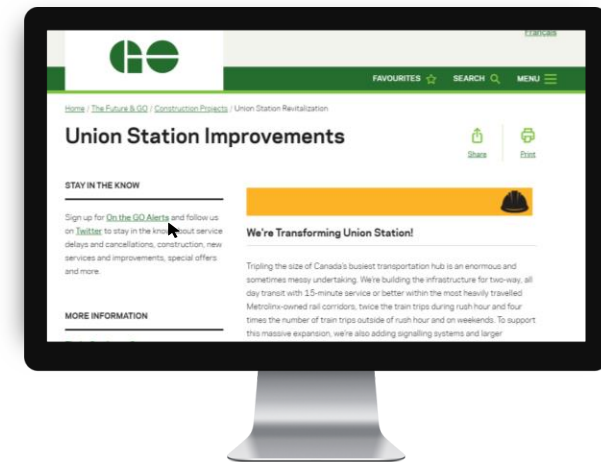
Adjustment to Accessible Pathway between Bay Concourse and Scotiabank Arena in Effect

The accessibility ramp between the hallway connecting the York and Bay Concourses and Scotiabank Arena is closed. Step-free access from Bay Concourse is maintained.

Here's what you need to know:

- If you require a step free route, please use the accessibility ramp located in the Bay Concourse near Tim Hortons.
- Please follow directional signage to the accessibility ramp in Bay Concourse.
- An elevator is located adjacent to the ramp.
- The double doors and stairwell located in the hallway connecting the York and Bay Concourses and Scotiabank Arena remain open.

Construction updates posted on the web at:
[Union Station Improvements](#)
Register for [On the GO alerts](#) to stay in the know



NEXT STEPS

Contacts:

Sarah Jayne Swan, Project Coordinator, Stakeholder & Communications, ONTrack Alliance
sarah-jayne.swan@wsp.com

Josh Speedie, Communications Manager, ONTrack Alliance
Joshua.Speedie@wsp.com

James Burchell, Advisor, Community Engagement and Issues Manager, Metrolinx
James.burchell@metrolinx.com



@Metrolinx



@GOExpansion



<https://www.metrolinx.com/union>



TorontoWest@metrolinx.com





METROLINX