

# Work site expansion at Queen St. East and De Grassi St.

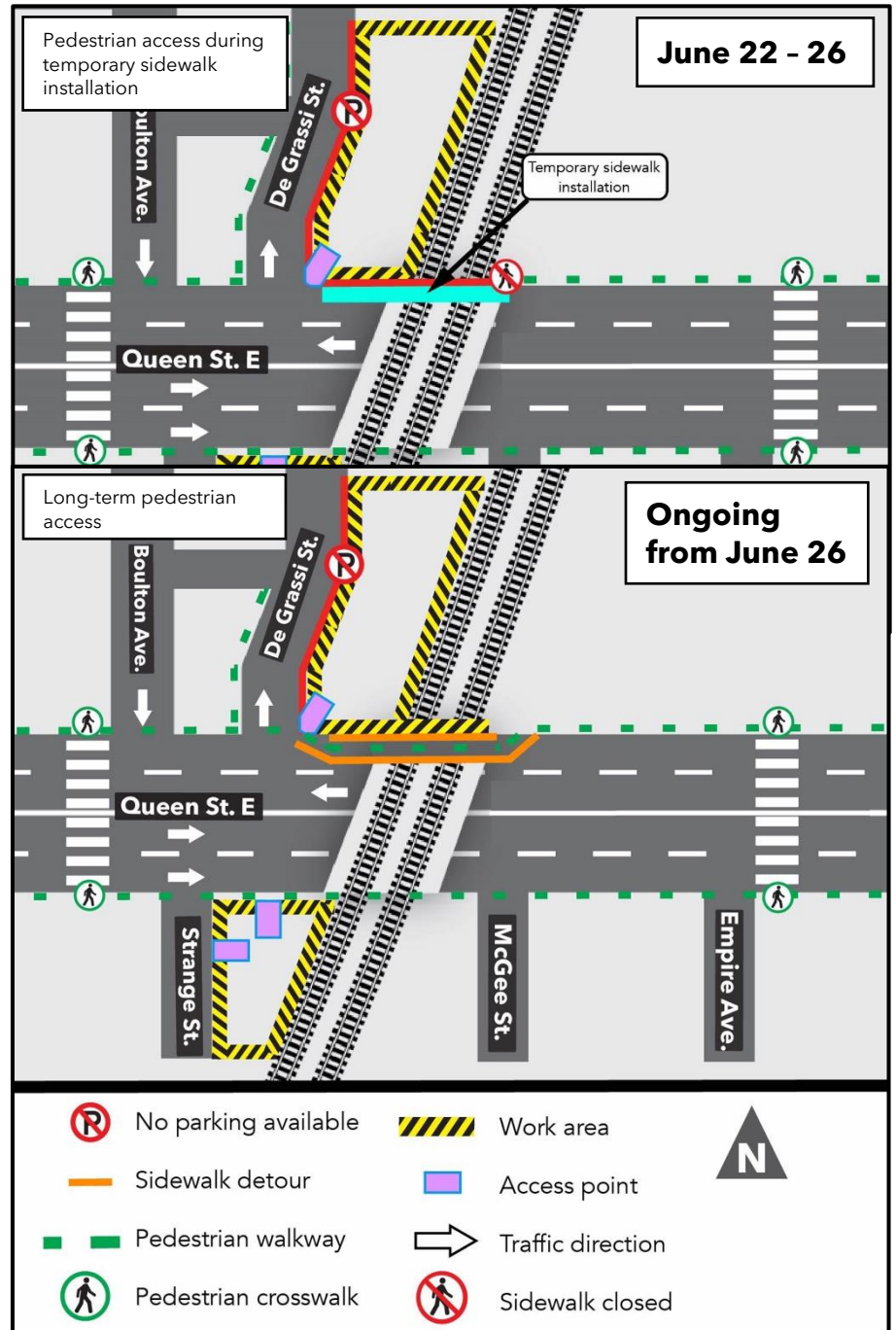
**Scheduled Start Date:** June 22, 2026

**Scheduled End Date:** June 26, 2026

**Working Hours:** Monday to Friday, 7:00 a.m. to 7:00 p.m.

## What is happening?

- To facilitate construction of the future Leslieville Station, crews must expand the work area at Queen St. East and De Grassi Street.
- This expansion will result in restriction of street parking on De Grassi Street along the work site.
- The expansion will also result in a long-term westbound lane closure on Queen Street to accommodate a temporary sidewalk.
- The sidewalk on Queen Street between De Grassi Street and Jimmie Simpson Park will be temporarily closed on **June 22, 2026 for up to one week** to install the temporary sidewalk.
- During the temporary sidewalk closure, pedestrians can use the crosswalks at Boulton Avenue and Empire Avenue to safely cross Queen Street.
- The temporary sidewalk will be in place for the majority of construction, until project completion.
- Traffic control personnel and paid duty officers will also be on-site to safely direct motorists and pedestrians during work hours.



## What to expect

- Increased presence of construction vehicles and equipment can be expected in the work area.
- Work areas will be clearly marked or fenced off to ensure public safety.
- Please exercise caution around active construction sites.
- Work may be delayed or rescheduled due to weather or unforeseen circumstances.
- Trucks leaving the site will use Queen St. East.
- Trucks entering the site will use Queen St. East.

## Traffic Changes

- Minor delays may be experienced near the work zone.
- A paid duty officer, flaggers and detour signs will be onsite to direct traffic as needed.
- All businesses in the area will remain open during the work. Please follow signage for access.

## Pedestrian Access

- Pedestrian detours may be required, with signs in place to direct pedestrians as needed.
- Clear and defined walking paths will be maintained during construction to ensure pedestrian safety.

## Transit Service

- There is no anticipated impact to transit services.
- 

## About the Ontario Line

- 15.6-kilometre subway line that will make it faster and easier to travel within Toronto and beyond.
- 15 stops and more than 40 connections to other transit, including GO train, subway, LRT, streetcar, and bus lines.
- Less than 30 minutes from one end of the line to the other.
- 28,000 fewer cars on the road each day.

### Contact us:

Call us 24/7 at: [416-202-5100](tel:416-202-5100)

Write to us at: [ontarioline@metrolinx.com](mailto:ontarioline@metrolinx.com)

Find us on X, Facebook, and Instagram:

[@ontarioline](#)

Visit the website:

[www.metrolinx.com/ontarioline](http://www.metrolinx.com/ontarioline)

### Visit our community offices:

**770 Queen Street East (near Queen & Broadview)**

General hours:

Monday - Friday:

9:00 a.m. - 5:00 p.m.

**Pape/Danforth:  
810 Danforth Ave  
Between  
Woodycrest &  
Langford**

General Hours:

Monday - Friday:

9:00 a.m. - 5:00 p.m.

### Thorncliffe Park:

East York Town Centre

45 Overlea Blvd., Toronto, ON M4H 1C3 Unit 153  
(across from the Rogers store)

General hours:

Monday - Friday, 9 a.m. - 5 p.m.