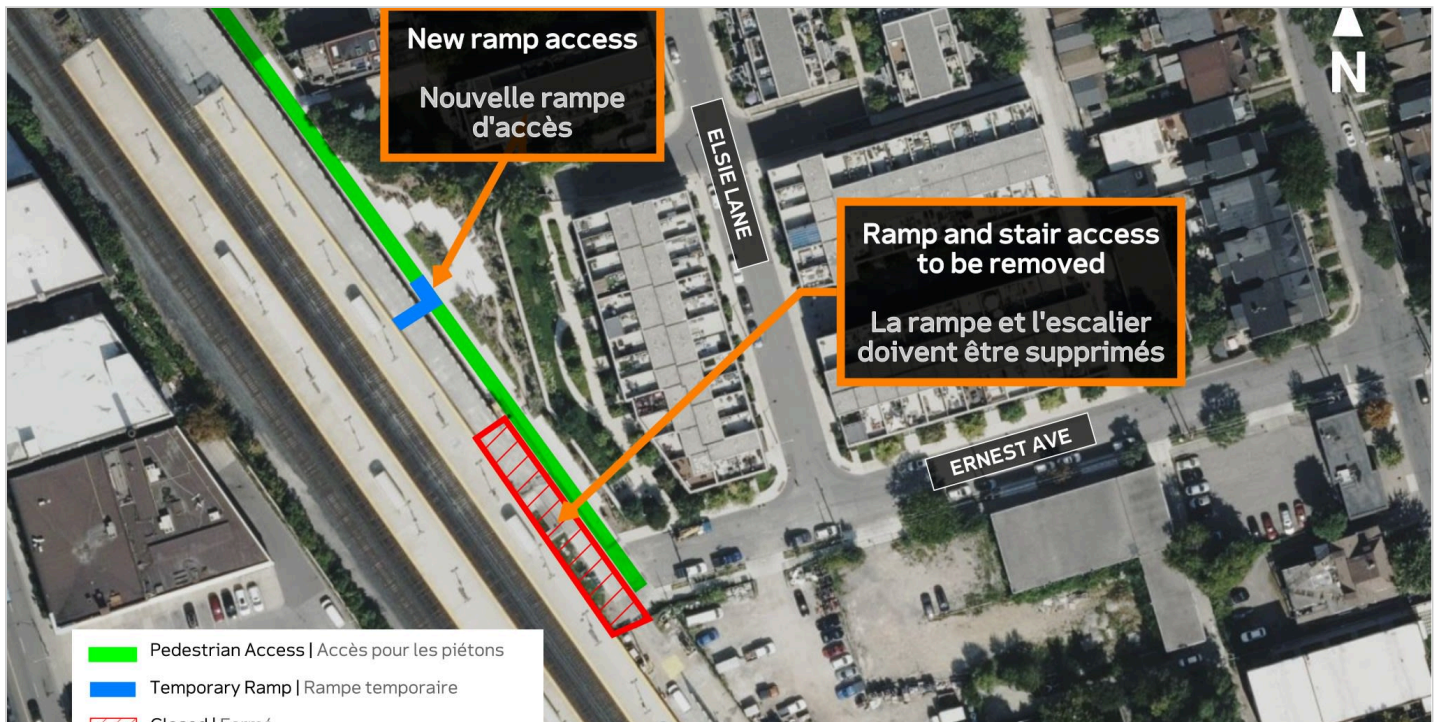


# Bloor GO - Ernest Ave Access Ramp Relocation

**Scheduled Start Date:** April 20, 2026

**Scheduled End Date:** June 30, 2026

**Working Hours:** Monday to Friday, 7:00 a.m. to 5:00 p.m.



**Aerial photo of Ernest Ave/West Toronto Railpath with a note showing the existing access ramp relocated to the park.**

## What Is Happening?

The stair and ramp access to Bloor GO Station/West Toronto Railpath via Ernest Ave, will be removed and temporarily relocated within the new park at Ernest Ave. Crews will then complete the construction of the noise barrier wall and track work in this location. The temporary ramp will remain in the park until the new access pavilion at Randolph Ave is complete. Access will be maintained to Bloor GO Station at all times.

## What to Expect?

- Trucks and construction equipment may generate dust during construction.
- Crews will take precautions to monitor and reduce dust.
- Increased presence of construction vehicles and equipment can be expected in the work area.
- Work areas will be clearly marked or fenced off to ensure public safety.
- Please exercise caution around active construction sites.
- Work may be delayed or rescheduled due to weather or unforeseen circumstances

## Traffic Changes

- No disruptions to traffic are anticipated.

## Pedestrian Access

- All pedestrian sidewalks will remain open throughout the work.

## Noise & Vibration

- Residences and businesses in the area may experience noise and vibration caused by construction equipment related to this work.
- Crews will take measures to minimize disruptions to the surrounding area wherever possible.

## Transit Service

- There is no anticipated impact to transit services.
- 

## About the Project

The project is made up of many different pieces of work that once complete, will fit together seamlessly to deliver increased service and connections from Union Station to Kitchener GO Station.


To deliver increased service on the Kitchener Line, improvements are being made along the rail corridor and to some existing stations – and the work is well underway. Metrolinx is working to deliver more rail service to communities along the Kitchener Line as quickly as we can.

## Questions? We're here for you.

 [www.metrolinx.com/kitchener](http://www.metrolinx.com/kitchener)

 [TorontoWest@metrolinx.com](mailto:TorontoWest@metrolinx.com)

 [@MetrolinxToronto](https://www.facebook.com/MetrolinxToronto)

 4162026911