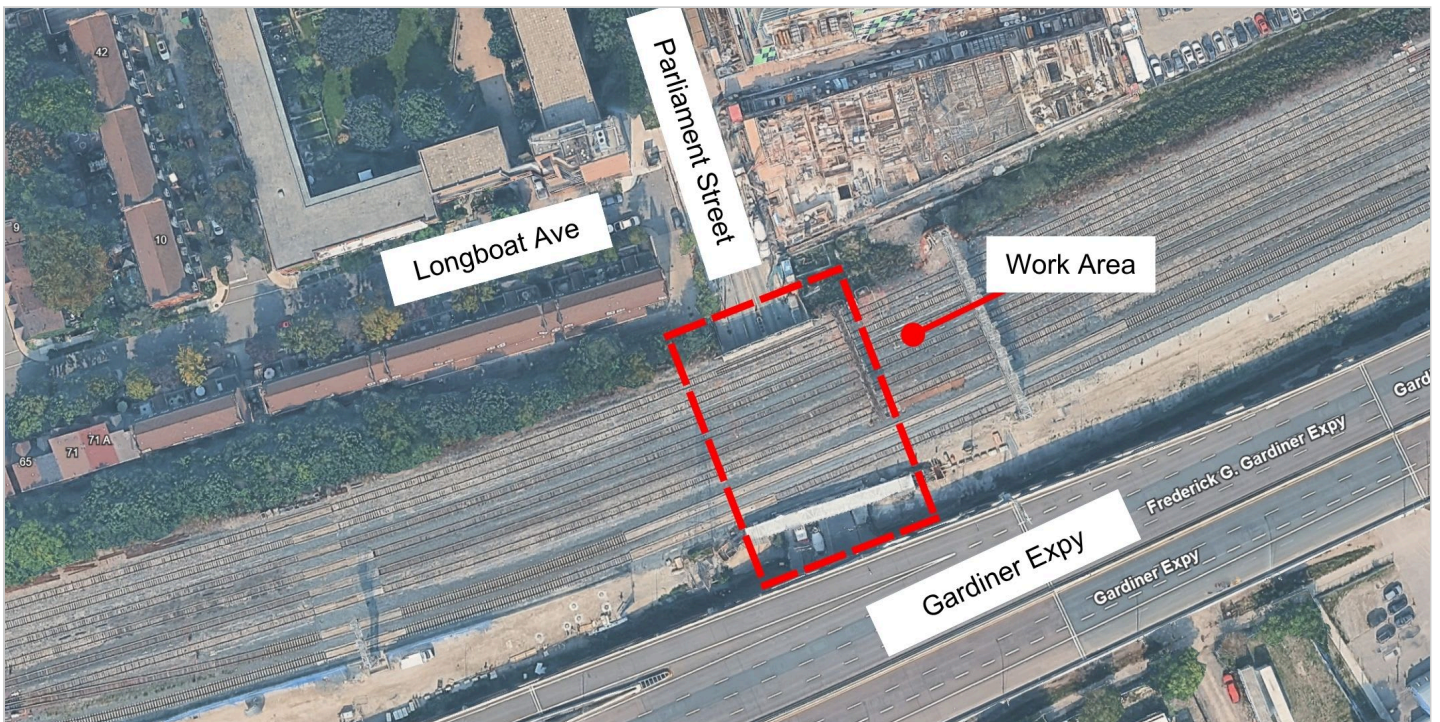


Parliament Street Road Closure - Bridge Investigations

Scheduled Start Date: May 18, 2026

Scheduled End Date: July 17, 2026

Working Hours: Monday to Sunday, 8:00 p.m. to 5:00 a.m.



Map showing work impacts on Parliament Street, between Lake Shore Blvd and Mill Street .

What Is Happening?

Bridge investigations will be underway on Parliament Street below the rail bridge impacting access between Lake Shore Boulevard West and Mill Street. Nightly intermittent lane and sidewalk closures will be needed to accommodate the work and machinery deployment and bridge deck and columns investigations. One lane in each direction and one sidewalk will be maintained during work hours.

There will be a full road closure overnight on June 2nd, and June 18th, 2026.

What to Expect?

- Construction lighting may be visible from the work site.
- Where possible, lights from equipment will be positioned away from residential homes to keep light pollution levels low.
- Trucks and construction equipment may generate dust during construction.
- Crews will take precautions to monitor and reduce dust.
- Increased presence of construction vehicles and equipment can be expected in the work area.
- Work areas will be clearly marked or fenced off to ensure public safety.
- Please exercise caution around active construction sites.
- Work may be delayed or rescheduled due to weather or unforeseen circumstances.

Traffic Changes

- No disruptions to traffic are anticipated.

Pedestrian Access

- All pedestrian sidewalks will remain open throughout the work.
- Temporary sidewalk closures or pedestrian detours will be in place while the work is underway, with signs in place to direct pedestrians as needed.
- Pedestrian detours may be required, with signs in place to direct pedestrians as needed.
- Clear and defined walking paths will be maintained during construction to ensure pedestrian safety.

Noise & Vibration

- Crews will take measures to minimize disruptions to the surrounding area wherever possible.
- Residences and businesses in the area can expect noise and vibration caused by construction equipment related to this work.

Transit Service

- There is no anticipated impact to transit services.
 - Any potential transit impacts will be communicated by the TTC.
-

About the Project


Union Station is becoming more accessible and easier to navigate with wider platforms and less crowding. As the gateway to the region, the station is undergoing much-needed modernization while preserving heritage features to meet transit needs now, and in the future. All this to expand capacity and run more trains through the largest transit hub in the GO rail system and bring two-way, all-day service every 15 minutes or better along core segments of the network.

Questions? We're here for you.

 www.metrolinx.com/union

 TorontoEast@Metrolinx.com

 [@MetrolinxToronto](https://www.facebook.com/MetrolinxToronto)

 4162023900