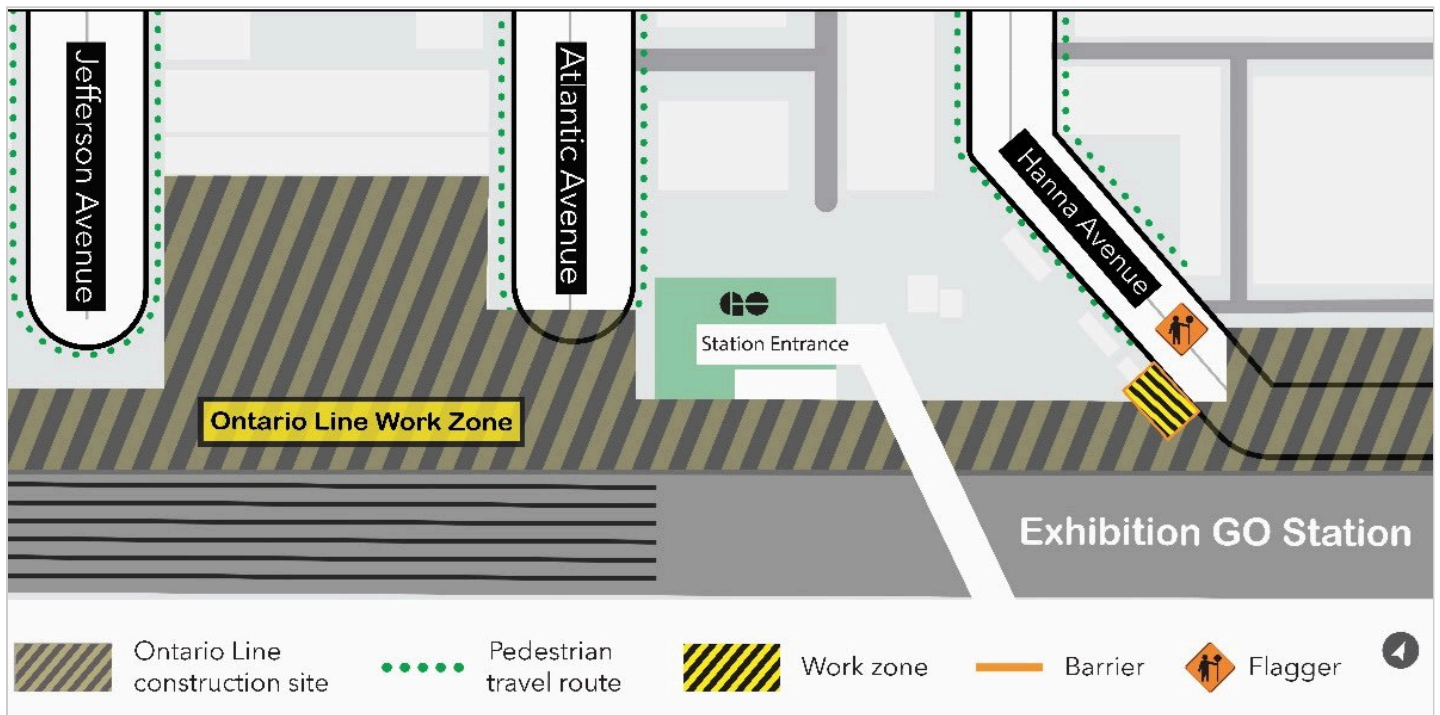


Exhibition Water Service Installation on Hanna Avenue

Scheduled Start Date: June 09, 2026

Scheduled End Date: August 28, 2026

Working Hours: Monday to Friday, 7:00 a.m. to 5:30 p.m.



Map of Work Area

What Is Happening?

As part of ongoing work to build the future Exhibition Station on the Ontario Line, crews will be installing a water service connection in the area.

What to Expect?

- Crews will take precautions to monitor and reduce dust.
- Work areas will be clearly marked or fenced off to ensure public safety.
- Work may be delayed or rescheduled due to weather or unforeseen circumstances.

Traffic Changes

- A paid duty officer, flaggers and detour signs will be onsite to direct traffic as needed.
- All businesses in the area will remain open during the work. Please follow signage for access.

Pedestrian Access

- All pedestrian sidewalks will remain open throughout the work.

Transit Service

- There is no anticipated impact to transit services.
-




About the Project

- 15.6-kilometre subway line that will make it faster and easier to travel within Toronto and beyond.
- 15 stops and more than 40 connections to other transit, including GO train, subway, LRT, streetcar, and bus lines.
- Less than 30 minutes from one end of the line to the other.
- 28,000 fewer cars on the road each day.

Questions? We're here for you.

-  <https://www.metrolinx.com/ontario-line>
-  ontarioline@metrolinx.com
-  @ontarioline
-  416-202-5100

Visit our community offices:

-  Monday to Friday: 9 a.m. to 5 p.m.
-  Monday to Friday: 9 a.m. to 5 p.m.
-  Monday to Friday: 9 a.m. to 5 p.m.